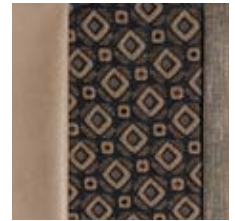




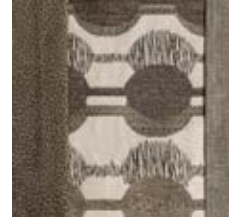
Luxury Lightweight Travel Trailers



**2016 Décor**



*Dawn*



*Patina*



*Twilight*

**Standards**

**Living Room/Kitchen**

- 8 CU FT Stainless Steel Refrigerator (N/A 240BHS)
- AM/FM/CD/DVD Bluetooth Player w/USB Port
- Barrel Ceiling w/Contrasting Accent Trim
- Crown Molding w/LED Lights
- Custom Wall Border
- Decorative Designer Kitchen Backsplash
- Designer High-Definition Countertops
- Drawers under Refrigerator & Ovens (where applicable)
- Flush-Mounted Range w/Smooth Glass Cover
- Free-Standing Residential Sofa
- Hard Lambrequins & Valances
- Kitchen Skylight
- Large Overhead Cabinets
- LED Lighting Inside & Out
- Monitor Panel
- Nightshades
- Pendant Lights over Island (where applicable)
- Roller Ball Bearing Drawer Guides
- Sink w/Cover & Residential Pulldown Faucet
- Solid Wood-Framed Mortise & Tenon Glazed Cabinet Doors

- Stainless Steel Microwave w/Turntable
- Stainless Steel Oven

**Bedroom/Bath**

- Bath Skylight
- Cotton Cloud Deep Quilt Mattress
- Decorative Bedspread w/Body Pillow
- Designer Headboard
- Gas Struts on Bed Base
- Power Bath Vent

**Construction**

- 3/8" Fully Walk-On Roof Decking
- 5/8" Tongue & Groove Plywood Floor
- 1-Piece Seamless Roof w/ SuperFlex Roofing Material
- 6-Sided Aluminum Frame
- Heated & Enclosed Underbelly
- Ivory Color Infused Gel F/G Sidewalls
- New Gelcoat Smooth Streamline Painted Front Cap

**Exterior**

- 4 Stabilizer Jacks
- 6 GAL Gas/Electric DSI Water heater
- 15" Tires
- 30A Service
- 30" Radius Entry Door
- 30 LB LP Bottles & Cover w/Flip-Up Access Lid

- 13,500 BTU A/C
- Awning w/Drip Rail & Spouts
- Battery Disconnect
- Black Tank Flush
- Bunk Ladder & Railing (322BHS, 329IK) (N/A w/Jiffy in Bunk)
- Cable Hookup
- Easy Lube Axles
- Exterior Shower
- Large Assist Grab Handle
- Patio Door Light
- Rear Bumper w/Sewer Hose Storage
- Satellite Prep
- Self-Adjusting Brakes
- Slam Latch Baggage Doors with Magnet Door Catches
- SuperFlex® Flexible Roofing
- TV Antenna w/Booster
- Tinted Windows
- Triple Step

**Options**

- 2nd A/C (incl. 50A)
- 12 CU FT Side-By-Side Refrigerator (304RL, 337RES, 339RK)
- Deluxe Sleeper Sofa
- Exterior Refrigerator in Front Storage Compartment (F/P specific)
- Fireplace (N/A 240BHS, 262RKS, 329IK)

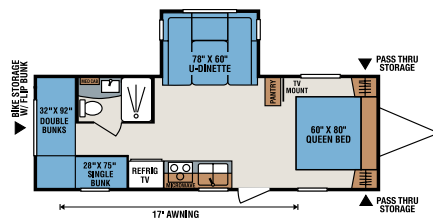
- Jiffy Sofa w/Flip-Up Bunk (322BHS, 329IK)
- Outside Grill
- Recliner (1 or 2) (320BS & 300RLS)
- Solid Surface Countertop
- Table & 4 Chairs w/Leaf (N/A 240BHS, 262RKS, 263RKS & 339RK)
- Theater Seating (forced option on 328IK, 337RES & 339RK)
- Wired for 2nd A/C w/50A Service

**LX Package (forced)**

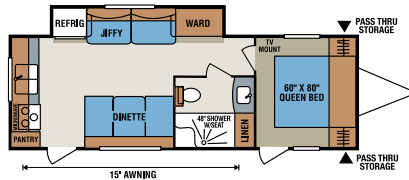
- 15" Aluminum Wheels
- Cotton Cloud Deep Quilt 60" x 80" Gel Foam Mattress
- Equa-Flex™ Suspension
- LED TV (32" or 39")
- Multi-Directional Lighted Power Awning with Speakers
- Porcelain Toilet
- Spare Tire/Carrier/Cover

**Elite Package**

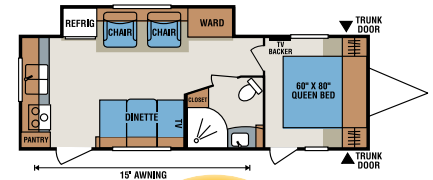
- 15,000 BTU A/C
- Flip-Up Bike Rack/Cargo Tray
- Frameless Windows
- Ladder
- Maxxair® Bedroom Vent
- Power Front/Rear Stabilizer Jacks
- Power Tongue Jack



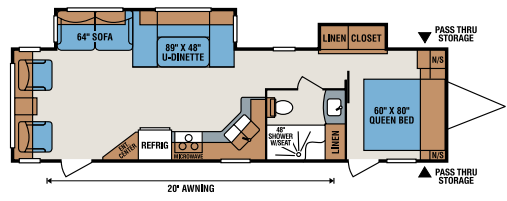
**240BHS**



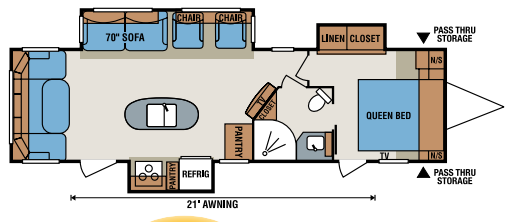
**262RKS**



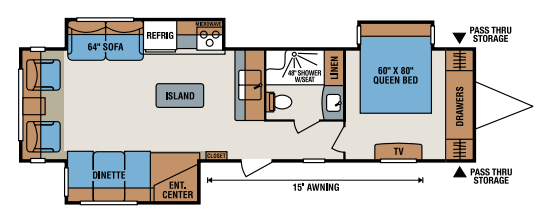
**263RKS NEW**



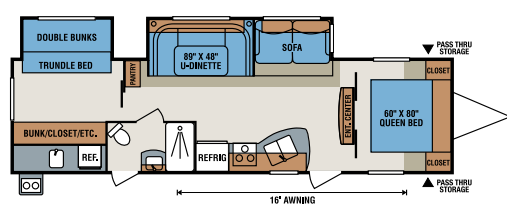
**300RLS**



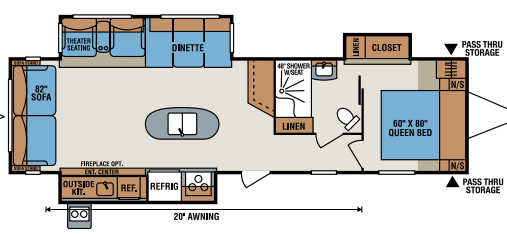
**304RL NEW**



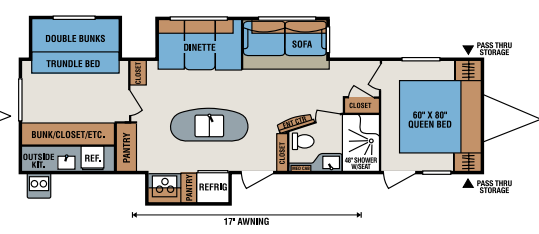
**320BS**



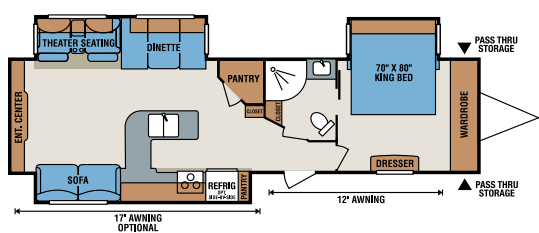
**322BHS**



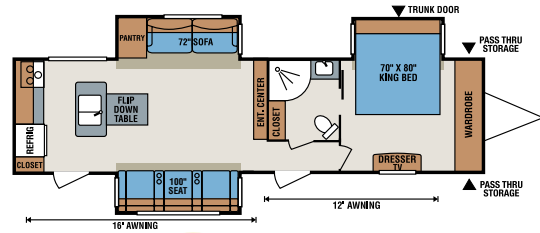
**328IK**



**329IK**



**337RES**



**339RK NEW**

| Travel Trailers                    | 240BHS | 262RKS | 263RKS | 300RLS | 304RL  | 320BS  | 322BHS | 328IK  | 329IK  | 337RES         | 339RK          |
|------------------------------------|--------|--------|--------|--------|--------|--------|--------|--------|--------|----------------|----------------|
| UVW (Unloaded Vehicle Weight) *    | 5,160  | 5,590  | 5,710  | 6,970  | 7,790  | 7,770  | 7,150  | 8,160  | 8,130  | 8,410          | 8,420          |
| Dry Hitch Weight *                 | 570    | 600    | 550    | 970    | 1,170  | 900    | 720    | 740    | 860    | 1,020          | 1,070          |
| Dry Axle Weight*                   | 4,590  | 4,990  | 5,160  | 6,000  | 6,620  | 6,870  | 6,430  | 7,420  | 7,270  | 7,390          | 7,350          |
| NCC (Net Carrying Capacity)        | 1,340  | 1,210  | 1,090  | 1,330  | 1,010  | 1,530  | 1,150  | 1,340  | 1,370  | 1,090          | 1,080          |
| GVWR                               | 6,500  | 6,800  | 6,800  | 8,300  | 8,800  | 9,300  | 8,300  | 9,500  | 9,500  | 9,500          | 9,500          |
| Interior Height                    | 82"    | 82"    | 82"    | 82"    | 82"    | 82"    | 82"    | 82"    | 82"    | 82"            | 82"            |
| Exterior Height w/ A/C             | 11' 2" | 11' 1" | 11' 1" | 11' 2" | 11' 2" | 11' 3" | 11' 2" | 11' 6" | 11' 6" | 11' 6"         | 11' 6"         |
| Exterior Width                     | 96"    | 96"    | 96"    | 96"    | 96"    | 96"    | 96"    | 96"    | 96"    | 96"            | 96"            |
| Exterior Length                    | 28' 3" | 28' 8" | 28' 9" | 34' 5" | 34' 6" | 36' 5" | 35' 8" | 36' 2" | 36' 6" | 37' 4"         | 37' 4"         |
| Refrigerator (cu. feet)            | 6      | 8      | 8      | 8      | 8      | 8      | 8      | 8      | 8      | 8              | 8              |
| Water Heater Cap. (gal. G/E w/DSI) | 6      | 6      | 6      | 6      | 6      | 6      | 6      | 6      | 6      | 6              | 6              |
| Fresh Water Cap. (gal.)            | 40     | 40     | 40     | 40     | 40     | 40     | 40     | 40     | 40     | 40             | 40             |
| Waste Water Cap. (gal.)            | 32     | 32     | 32     | 32     | 32     | 32     | 32     | 32     | 32     | 32             | 32             |
| Gray Water Cap. (gal.)             | 32     | 64     | 60     | 32     | 32     | 32     | 32     | 32     | 56     | 32             | 32             |
| LP Gas Cap. (lbs.)                 | 60     | 60     | 60     | 60     | 60     | 60     | 60     | 60     | 60     | 60             | 60             |
| Furnace BTUs (1,000s)              | 20     | 20     | 20     | 30     | 30     | 30     | 30     | 30     | 30     | 30             | 30             |
| Tire Size                          | 15"    | 15"    | 15"    | 15"    | 15"    | 15"    | 15"    | 15"    | 15"    | 15"            | 15"            |
| Awning                             | 17'    | 15'    | 15'    | 20'    | 21'    | 15'    | 16'    | 20'    | 17'    | 12' w/17' opt. | 12' w/16' opt. |

\*This weight reflects the rolling average unit weight for each model. Your trailer weight will vary according to optional equipment.



985 N 900 W • Shipshewana, IN 46565  
 E-mail [kz@kz-rv.com](mailto:kz@kz-rv.com) • [www.kz-rv.com](http://www.kz-rv.com)

Due to continual research and advances, manufacturer reserves the right to change specifications, design, price and equipment without notice, and assumes no responsibility for any error in this literature. Some items shown are not included as standard or optional equipment. ©2015KZ | 9/3/15 | 10M