

# SPORTSMEN SPORTSTER

by **KZ**

Travel Trailer & Fifth Wheel Toy Haulers



## Standards

- 3/8" Fully Walk On Roof with SuperFlex Roofing Material
- 5/8" Tongue and Groove Plywood Floor
- 3 Burner Cooktop
- 5 Cubic Foot Refrigerator
- 6 Gallon Gas DSI Water Heater
- 8 Tie Down Rings
- 20# Gas Bottles
- 30 Amp Service
- 13,500 BTU AC
- Acrylic Sink
- AM/FM/CD Player
- Awning with Drip Rail and Spouts
- Built-In Medicine Cabinet with Mirror in Bathroom
- Cable Hook Up
- Cotton Cloud Deep Quilt Mattress
- Custom Wall Border
- Designer Match Box Style Valances
- Enclosed Pin Box on Fifth Wheel
- Enclosed Underbelly (N/A on 22TH, 229TH, 265TH)
- Extra Large Baggage Doors
- Heated Underbelly
- High Rise Faucet
- Large Overhead Cabinets
- LED Interior Lighting
- LED Light in Pass Thru Storage

- Microwave with Turntable
- Mini Blinds
- Monitor Panel
- Patio Door Light
- Power Vent in Bathroom
- Radius Entry Door
- Radius Truss Rafters
- Range Hood with 12V Light and Exhaust Fan
- Roller Ball Bearing Drawer Guides
- Self-Adjust Brakes
- Sink Cover
- Smooth Screwless Baggage Doors
- Solid Wood Framed Mortise and Tenon Cabinet Doors
- Tinted Safety Glass Windows
- Tub Surround
- Tuff Ply in Cargo Area (N/A on 22TH, 229TH and 265TH)
- TV Antenna with Booster

## Options

- 2nd Flip Jiffy (22TH, 229TH and 265TH Only)
- 4.0 Generator (Requires Fuel Cell)(TT)
- 5.5 Generator (Fifth Wheels Only)
- 8 Cubic Foot Refrigerator
- Aluminum Wheels
- Chair – 1 or 2 (N/A with Jiffy)
- Cotton Cloud Deep Quilt,

- Gel Foam Mattress
- Diamond Plate Threshold
- Double Power Beds (Fifth Wheels and 30TH Only)
- Exterior Ladder
- Flip Up Full Size Bed (N/A with Power Bed)
- Fuel Cell and Pump Station (N/A on 22TH and 229TH)
- Generator Preparation (N/A on 22TH and 229TH) (Requires Fuel Cell)
- Multi-Directional Lighted Power Awning
- Outside Grill
- Power Bed (N/A with Flip Up Bed)
- Pull Down Screen Wall
- Solid Surface Counter Tops
- Spare Tire
- Wired for 2nd A/C with 50 Amp Service

## Standard Run Package

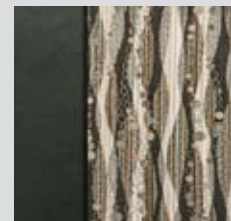
- 2 Exterior Speakers
- 6 Cubic Foot Refrigerator
- 30# Bottle with Cover
- Assist Grab Handle
- Gas/Electric DSI Water Heater
- Outside Shower (Where Available)
- Oven
- Skylight (Where Available)

- Stabilizer Jacks – 2 or 4
- Windows in Slideout (Where Available)
- Winter Bypass Kit

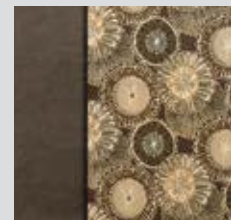
## Touring Run Package

- Black Tank Flush
- DVD Player
- Night Shades
- Power Awning
- Skylight in Kitchen
- Tongue Jack
- Spare Tire Carrier

## 2016 Décor

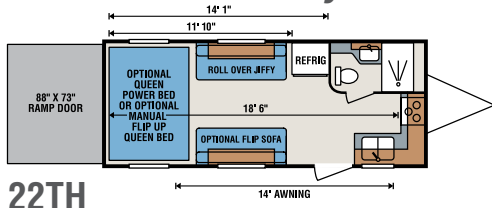


*Brindle*

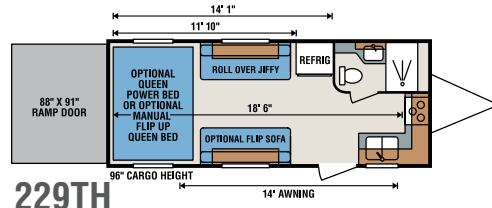


*Harvest*

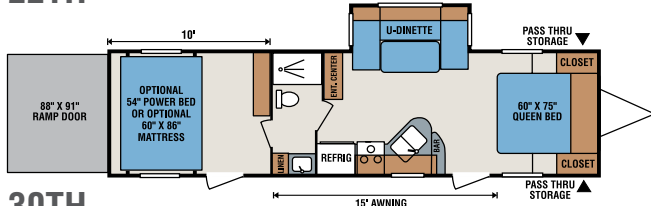
# Travel Trailer Toy Haulers



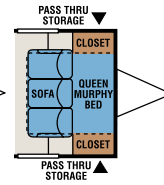
22TH



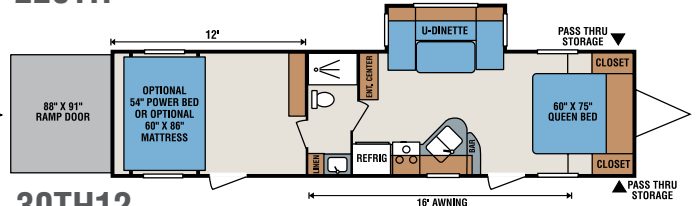
229TH



30TH

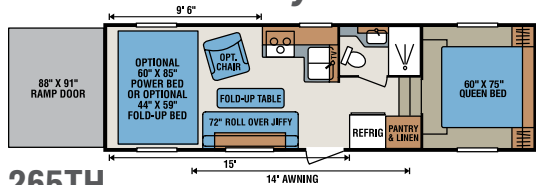


30TH  
Murphy Bed Opt.

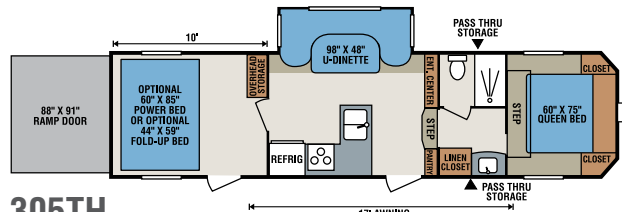


30TH12

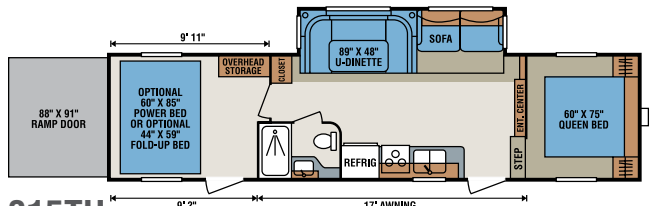
# Fifth Wheel Toy Haulers



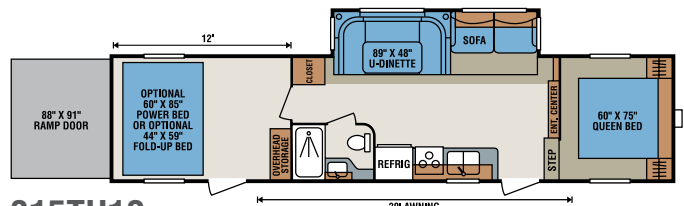
265TH



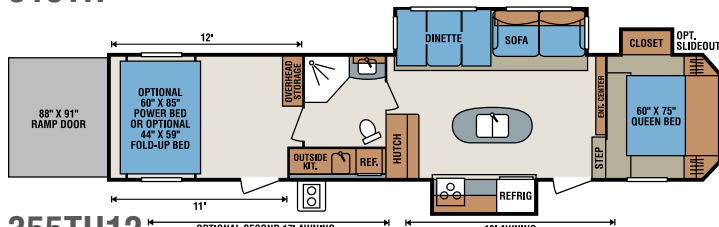
305TH



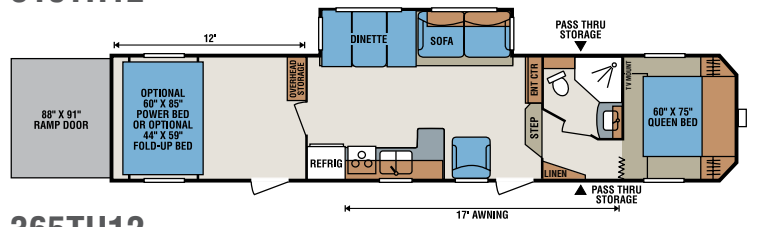
315TH



315TH12



355TH12



365TH12

Toy Haulers	22TH	229TH	30TH	30TH12	265TH	305TH	315TH	315TH12	355TH12	365TH12
UVW (Unloaded Vehicle Weight)*	4,248	4,570	7,020	7,180	6,088	7,590	8,080	8,420	9,750	9,430
Dry Hitch Weight*	898	860	1,030	1,160	1,356	1,370	1,590	1,700	1,900	1,940
Dry Axle Weight*	3,350	3,710	5,990	6,020	4,732	6,220	6,490	6,720	7,850	7,490
NCC (Net Carrying Capacity)	2,752	2,430	2,980	2,820	2,712	3,410	2,920	2,580	3,450	3,570
GVWR	7,000	7,000	10,000**	10,000	8,800	11,000	11,000	11,000	13,200	13,000
Interior Height	78"	96"	82"	96"	91"	92"	91"	96"	92"	92"
Exterior Height	10' 4"	11' 2"	11' 11"	N/A	12' 2"	12' 3"	12' 2"	13' 2"	12' 7"	12' 7"
Exterior Width	96"	96"	96"	96"	96"	96"	96"	96"	96"	96"
Exterior Length	24' 5 1/2"	24' 5 1/2"	34' 2"	36' 2"	28' 6"	33' 8"	35' 2"	37' 11"	39' 11"	40' 7"
Refrigerator (cu. feet)	5	5	5	5	5	5	5	5	6	5
Water Heater Cap. (gal. G/E w/DSI)	6	6	6	6	6	6	6	6	6	6
Fresh Water Cap. (gal.)	38	38	75	75	75	75	75	75	75	75
Waste Water Cap. (gal.)	32	32	32	32	32	57	32	32	32	57
Gray Water Cap. (gal.)	32	32	32	32	32	57	32	32	56	57
LP Gas Cap. (lbs.)	40	40	40	40	40	40	40	40	40	40
Furnace BTUs (1,000s)	16	16	25	25	25	30	25	25	30	30
Tire Size	14"	14"	15"	15"	15"	15"	15"	15"	15"	15"
Awning	14'	14'	14'	16'	14'	17'	17'	20'	13'***	17'

\*This weight reflects the rolling average unit weight for each model. Your trailer weight will vary according to optional equipment.

\*\*Any 30TH units built prior to 1/16/14 have 8,800# axles.

\*\*\*355TH12 also available with optional 17' awning.



985 N 900 W • Shipshewana, IN 46565  
E-mail [kz@kz-rv.com](mailto:kz@kz-rv.com) • [www.kz-rv.com](http://www.kz-rv.com)

Due to continual research and advances, manufacturer reserves the right to change specifications, design, price and equipment without notice, and assumes no responsibility for any error in this literature. Some items shown are not included as standard or optional equipment. ©2015KZ | 9/3/15 | 10M