

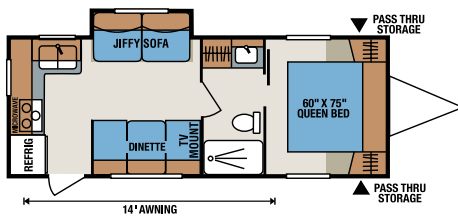
# SPORTSMEN®

Travel Trailers & Fifth Wheels

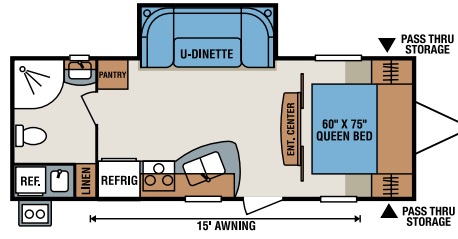


# Travel Trailers

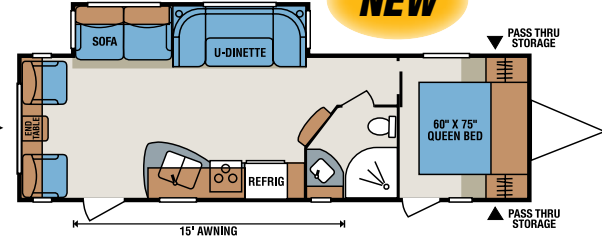
**NEW**



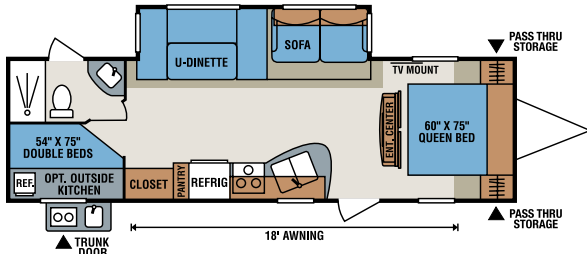
**S241RKS**



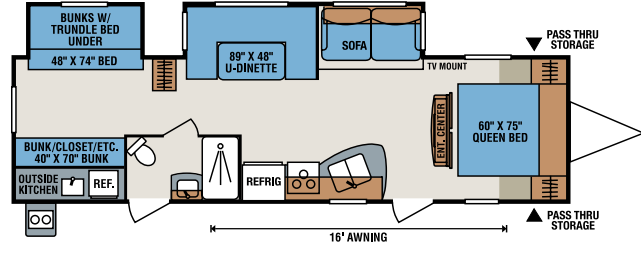
**S246RBK**



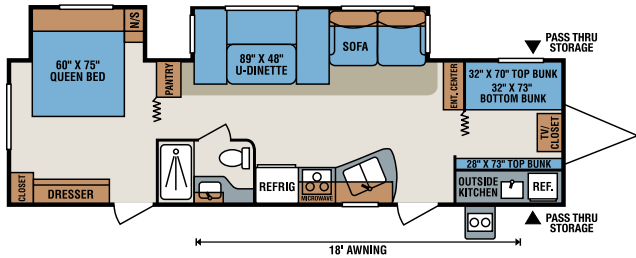
**S290RL**



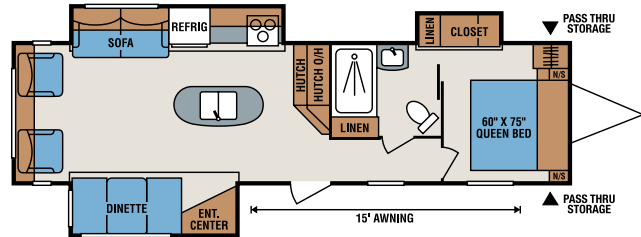
**S302BH**



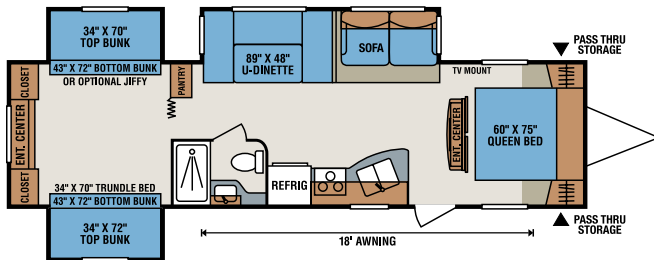
**S322BHK**



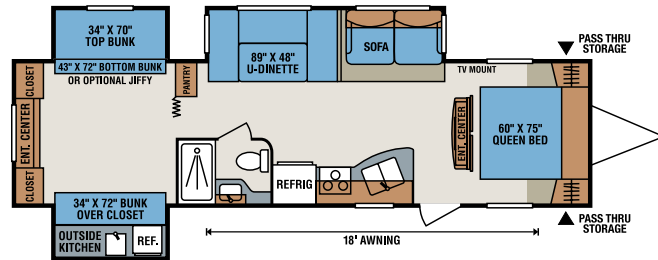
**S330BHK**



**S330IK**



**S331BH**

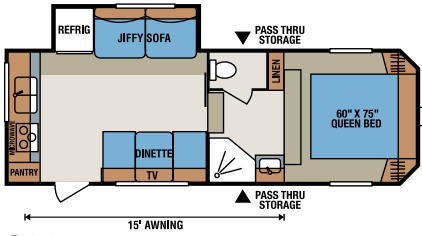


**S331BHK**

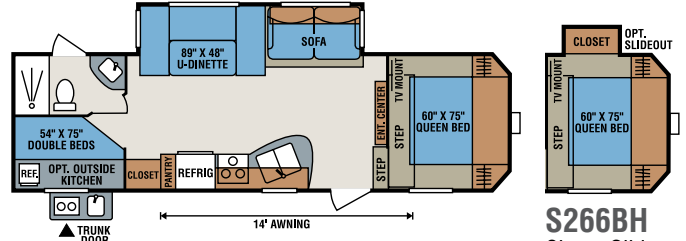
Travel Trailers	S241RKS	S246RBK	S290RL	S302BH	S322BHK	S330BHK	S330IK	S331BH	S331BHK
UVW (Unloaded Vehicle Weight)*	4,575	5,350	6,260	6,280	7,060	7,210	7,690	7,550	7,680
Dry Hitch Weight*	502	700	790	760	600	950	890	760	700
Dry Axle Weight*	4,073	4,650	5,470	5,520	6,460	6,260	6,800	6,790	6,980
NCC (Net Carrying Capacity)	1,425	1,650	1,740	1,720	1,740	1,590	1,110	1,250	1,120
GVWR	6,000	7,000	8,000	8,000	8,800	8,800	8,800	8,800	8,800
Interior Height	78"	78"	82"	82"	82"	82"	82"	82"	82"
Exterior Height w/ A/C	10' 1"	10' 8"	11' 3"	11' 4"	11' 2"	11' 1"	10' 11"	11' 4"	11' 4"
Exterior Width	96"	96"	96"	96"	96"	96"	96"	96"	96"
Exterior Length	26'	26' 9"	32' 3"	32' 6"	34' 5"	35' 2"	35' 6"	35' 6"	35' 6"
Refrigerator (cu. feet)	5	5	5	5	5	5	5	5	5
Water Heater Cap. (gal. G/E w/DSI)	6	6	6	6	6	6	6	6	6
Fresh Water Cap. (gal.)	38	38	38	38	40	38	40	38	38
Waste Water Cap. (gal.)	32	32	32	32	32	32	32	32	32
Gray Water Cap. (gal.)	32	32	32	32	32	47	32	32	32
LP Gas Cap. (lbs.)	40	40	40	40	40	40	40	40	40
Furnace BTUs (1,000s)	20	20	20	30	30	30	30	30	30
Tire Size	14"	14"	14"	15"	15"	15"	15"	15"	15"
Awning	14'	15'	15'	18'	16'	18'	15'	18'	18'

\*This weight reflects the rolling average unit weight for each model. Your trailer weight will vary according to optional equipment.

# Fifth Wheels

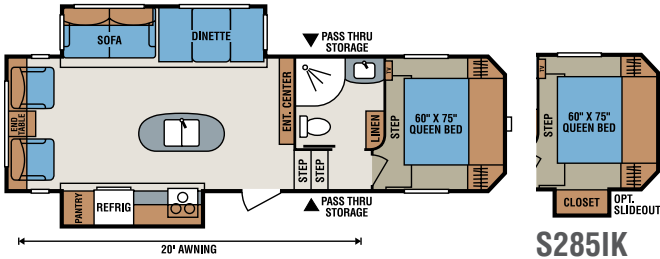


**S235RK**



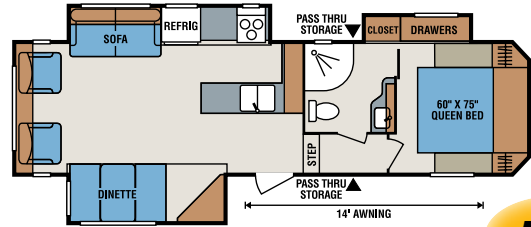
**S266BH**

**S266BH**  
Closet Slideout  
Option



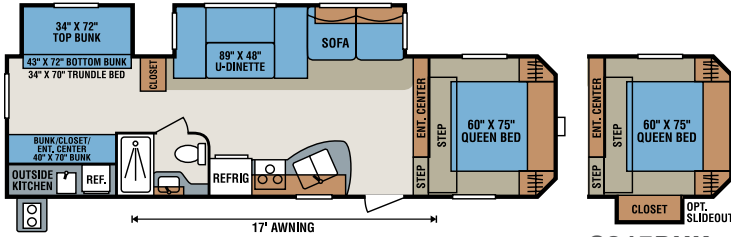
**S285IK**

**S285IK**  
Closet Slideout  
Option



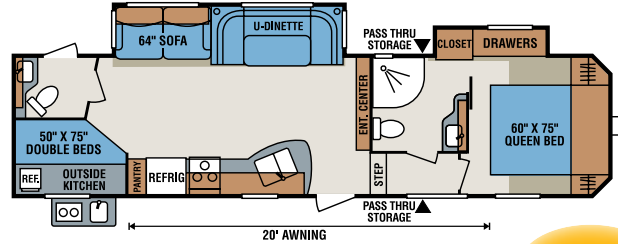
**S295RL**

**NEW**



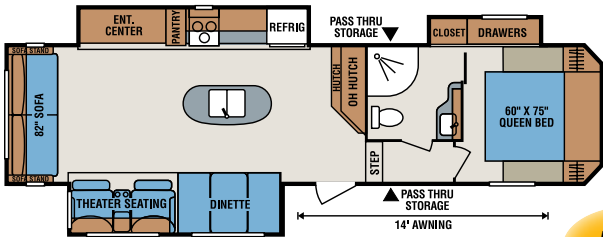
**S315BHK**

**S315BHK**  
Closet Slideout  
Option



**S325BHK**

**NEW**



**S335IK**

**NEW**

Fifth Wheels	S235RK	S266BH	S285IK	S295RL	S315BHK	S325BHK	S335IK
UVW (Unloaded Vehicle Weight)*	5,925	7,130	7,540	7,860	7,830	8,270	8,510
Dry Hitch Weight*	860	1,440	1,210	1,620	1,420	1,770	1,490
Dry Axle Weight*	5,065	5,690	6,330	6,240	6,410	6,500	7,020
NCC (Net Carrying Capacity)	1,075	1,670	1,260	1,340	1,370	1,730	1,890
GVWR	7,000	8,800	8,800	9,200	9,200	10,000	10,400
Interior Height	92"	92"	92"	92"	92"	92"	92"
Exterior Height w/ A/C	11' 8"	12' 4"	12' 7"	12' 5"	11' 11"	12' 5"	11' 5"
Exterior Width	96"	96"	96"	96"	96"	96"	96"
Exterior Length	25' 3"	30'	30' 9"	30' 5"	32' 3"	34' 11"	34' 11"
Refrigerator (cu. feet)	5	5	5	5	5	5	5
Water Heater Cap. (gal. G/E w/DSI)	6	6	6	6	6	6	6
Fresh Water Cap. (gal.)	38	40	38	38	38	38	38
Waste Water Cap. (gal.)	57	32	32	32	32	89	57
Gray Water Cap. (gal.)	89	32	32	32	32	57	57
LP Gas Cap. (lbs.)	40	40	40	40	40	40	40
Furnace BTUs (1,000s)	25	25	30	30	30	30	30
Tire Size	14"	15"	15"	15"	15"	15"	15"
Awning	15'	14'	20'	14'	17'	20'	14'

\*This weight reflects the rolling average unit weight for each model. Your trailer weight will vary according to optional equipment.

## Standards

- 3/8" Fully Walk On Roof Decking
- 1 Piece Seamless Roof with SuperFlex Roofing Material
- 3 Burner Cook Top
- 5 Cubic Foot Refrigerator
- 6 Gallon Gas DSI Water Heater
- 20 lb. Gas Bottles
- 30 Amp Service
- 13,500 BTU A/C
- Acrylic Sink
- AM/FM CD Player
- Awning with Drip Rail and Spouts
- Built-In Medicine Cabinet with Mirror in Bath
- Cable Hook Up
- Cotton Cloud Deep Quilt Mattress
- Custom Wall Border
- Decorative Kitchen Backsplash
- Decorative Light Above Dinette in Slide-Out (Where Available)
- Decorative Pillows on Jiffy Sofa (Where Available)
- Diamond Plate Rock Guard on Front of Travel Trailers
- Enclosed Pin Box on Fifth Wheels
- Heated and Enclosed Underbelly
- Large Overhead Cabinets
- LED Interior Lighting
- LED Light in Pass Thru Storage
- Linoleum From Front to Rear
- Microwave with Turntable
- Mini Blinds
- Monitor Panel
- New Aerodynamic Front Profile
- Norco/BAL Huck Bolted Frame (E-Coated) and A-Frame (Epoxy Painted)
- Padded Headboard
- Patio Door Light
- Power Vent in Bath
- Radius Entry Door
- Range Hood with 12V Light and Exhaust Fan
- Rear Bumper with Sewer Hose Storage

- Reversible Quilted Comforter
- Roller Ball Bearing Drawer Guides
- Roof Vent in Main Bedroom
- Self-Adjust Electric Brakes
- Sink Cover
- Smooth Screwless Baggage Doors
- Solid Wood Framed Mortise and Tenon Glazed Cabinet Doors
- Tinted Windows
- Tub Surround
- TV Antenna with Booster

## Options

- 8 Cubic Foot Refrigerator
- 32" LCD TV (Floorplan Dependent)
- 39" LCD TV (Floorplan Dependent)
- 15,000 BTU A/C Upgrade
- Bunk Ladder and Railing (Where Available)
- Closet Slide (S266BH, S285IK and S315BHK Only)
- Cotton Cloud Gel Foam Mattress Upgrade
- Deluxe Sleeper Sofa (forced on S335IK)
- Exterior Ladder
- Fiberglass on Fifth Wheels (Forced Option)
- Flip Up Bike Rack/Tray
- Jiffy in Bunk Slide (S331BH ODS)
- Maxxair® Vent Fan (Bedroom or Living Room)
- Outside Grill
- Outside Kitchen (S266BH and S302BH Only)
- Recliner – 1 or 2
- Solid Surface Countertops
- Table and Chairs with Leaf (Where Available)
- Wired for 2nd A/C with 50 Amp Service

## Standard Run Package

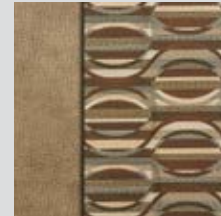
- 2 Exterior Speakers
- 2/4 Stabilizer Jacks
- 6 Cubic Foot Refrigerator

- (2) 30# Gas Bottles with Cover
- AM/FM/CD Player
- Assist Grab Handle
- Gas/Electric DSI Water Heater
- Outside Shower (N/A with Outside Kitchen)
- Oven
- Skylight Over Tub
- Windows at End of Slideout (Where Available)
- Winter Bypass Kit

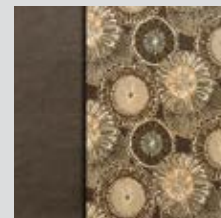
## Touring Package (Forced FWs)

- Black Tank Flush
- Multi-Directional Lighted Power Awning
- Night Shades
- Power Tongue Jack
- Skylight in Kitchen
- Spare Tire/Carrier/Cover
- Stereo with DVD Player

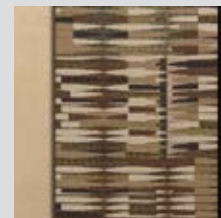
## 2016 Décor



*Cocoa*



*Harvest*



*Parchment*



985 N 900 W • Shipshewana, IN 46565  
E-mail [kz@kz-rv.com](mailto:kz@kz-rv.com) • [www.kz-rv.com](http://www.kz-rv.com)

*Due to continual research and advances, manufacturer reserves the right to change specifications, design, price and equipment without notice, and assumes no responsibility for any error in this literature. Some items shown are not included as standard or optional equipment. ©2015KZ | 9/3/15 | 10M*