

# SPORTSMEN® **Show Stopper** LE

Travel Trailers

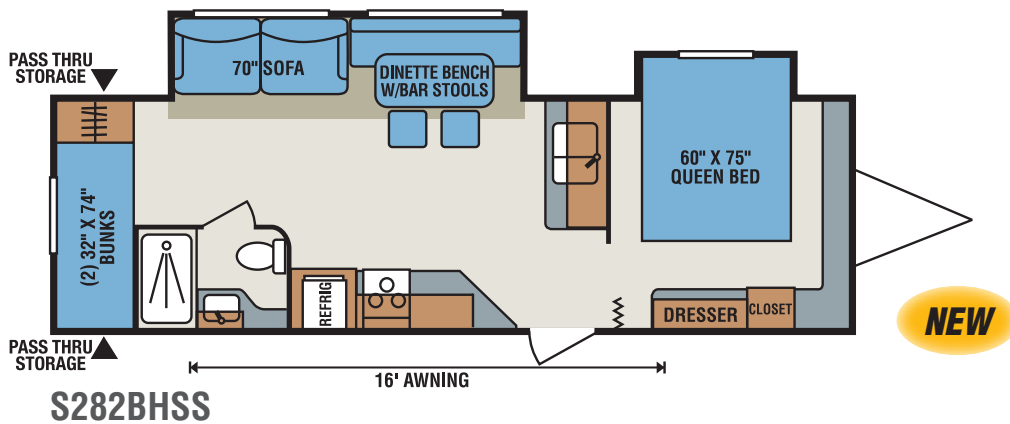
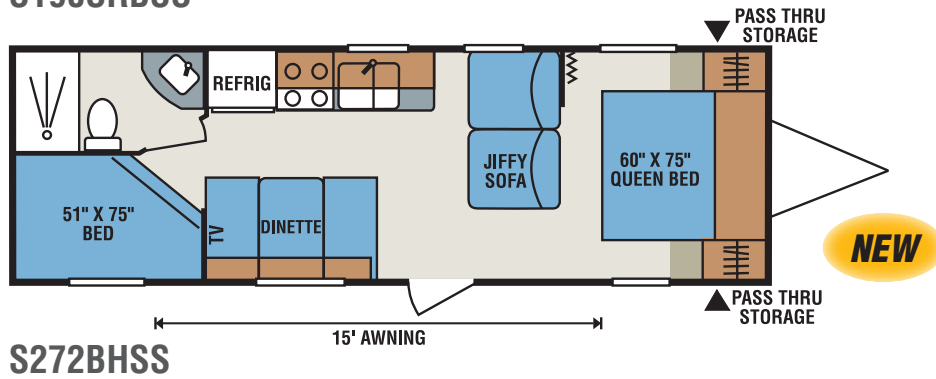
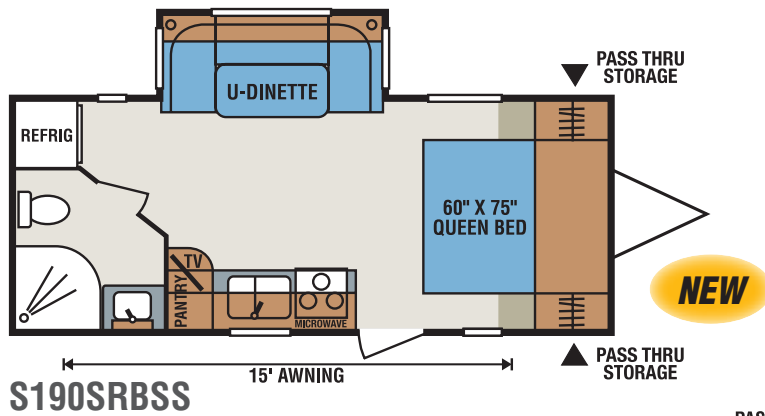
## SPECIAL



### Sportsmen Show Stopper LE Special Travel Trailers

	S190SRBSS	S272BHSS	S282BHSS
UVW (Unloaded Vehicle Weight)*	4,460	4,710	5,820
Dry Hitch Weight*	500	600	820
Dry Axle Weight*	3,960	4,110	5,000
NCC (Net Carrying Capacity)	1,540	1,290	1,180
GVWR	6,000	6,000	7,000
Interior Height	78"	78"	78"
Exterior Height w/ A/C	10' 4"	10' 8"	10' 8"
Exterior Width	96"	96"	96"
Exterior Length	24' 1"	29' 11"	30' 7"
Refrigerator (cu. feet)	6	6	6
Water Heater Cap. (gal. G/E w/DSI)	6	6	6
Fresh Water Cap. (gal.)	38	40	40
Waste Water Cap. (gal.)	32	32	32
Gray Water Cap. (gal.)	32	32	64
LP Gas Cap. (lbs.)	40	40	40
Furnace BTUs (1,000s)	20	20	25
Tire Size	14"	14"	14"
Awning	15'	15'	16'

\*This weight reflects the rolling average unit weight for each model. Your trailer weight will vary according to optional equipment.



## Standards

- 3/8" Fully Walk On Roof w/ SuperFlex Roofing Material
- 1 Piece Seamless Roof
- 4 Stabilizer Jacks
- 6 Cubic Foot Refrigerator
- 6 Gallon Gas/Electric Water Heater
- 20 lb. Gas Bottles
- 30 Amp Service
- 13,500 BTU A/C
- Acrylic Sink w/High-Rise Faucet
- AM/FM/CD Player
- Awning w/Drip Rail & Spouts

- Built-In Medicine Cabinet w/Mirror in Bath
- Cable Hook Up
- Cotton Cloud Deep Quilt Mattress
- Diamond Plate Rock Guard
- Extra Large Radius Baggage Doors
- Large Overhead Cabinets
- LED Interior Lighting
- Linoleum From Front to Rear
- Microwave w/Turntable
- Mini Blinds
- Monitor Panel
- Oven

- Patio Door Light
- Power Vent in Bath
- R7 Insulation
- Radius Entry Door
- Radius Truss Roof Rafters
- Range Hood w/12V Light & Exhaust Fan
- Rear Bumper w/Sewer Hose Storage
- Reversible Quilted Comforter
- Roller Ball Bearing Drawer Guides
- Spare Tire & Carrier
- Tinted Windows

- Tub Surround
- TV Antenna w/Booster
- Water Heater Bypass Kit

## Options (Forced)

- AM/FM/CD/DVD Player w/ Bluetooth Stereo
- Exterior Speakers
- Multi-Directional Lighted Power Awning
- Power Tongue Jack
- Spare Tire/Carrier



985 N 900 W • Shpshewana, IN 46565  
 E-mail [kz@kz-rv.com](mailto:kz@kz-rv.com) • [www.kz-rv.com](http://www.kz-rv.com)

*Due to continual research and advances, manufacturer reserves the right to change specifications, design, price and equipment without notice, and assumes no responsibility for any error in this literature. Some items shown are not included as standard or optional equipment. ©2015KZ | 11/20/15 | 2.5M*