

SIERRA

Luxury Travel Trailers and Fifth Wheels





345RET SHOWN WITH SANDSTONE DECOR



ENJOY THE WARMTH OF THE FIREPLACE AND THE BEAUTIFUL CABINERY IN THE 345RET'S ENTERTAINMENT AREA, PERFECT FOR FAMILY FUN



SIERRA'S CONVENIENT UNDERCUSHION STORAGE



SIERRA'S GOURMET STYLE UNDERMOUNTED SINK WITH HIGH-RISE FAUCET AND SOLID SURFACE APPLICATION INDULGES YOU WITH THE ULTIMATE IN RESIDENTIAL KITCHEN AMENITIES, AND IS PERFECT FOR ENTERTAINING.



LARGE AND FINELY APPOINTED BEDROOMS WITH PLENTY OF STORAGE ARE A HALLMARK OF THE SIERRA FAMILY.

SIERRA

335QBQ SHOWN IN ESPRESSO DECOR



SIERRA'S EXTERIOR REFRIGERATOR WILL HELP KEEP THE A/C INSIDE AND THE MESS OUTSIDE WHILE PROVIDING YOU AND YOUR FAMILY A QUICK AND EASY WAY TO ENJOY A COLD BEVERAGE AND A SNACK (PER FLOORPLAN)

SIERRA'S CONTEMPORARY CEILING FAN WITH STYLISH LIGHTING DELIVERS COOL, QUIET COMFORT.



THE OAK FRONTED DRAWERS WITH PINE SIDES GIVE YOU PLENTY OF SPACE, AND THE METAL DRAWER GUIDES WILL PROVIDE YEARS OF SMOOTH OPERATION.

SIERRA'S SCREWED AND GLUED LUMBER CORE STYLE, A PINNACLE IN THE INDUSTRY VS. THE COMPETITIONS PRESSBOARD STAPLED WOOD STYLES.



THERE'S PLENTY OF ROOM FOR FAMILY AND FRIENDS WITH SIERRA'S QUAD BUNK. A SECOND ENTRANCE WITH HALF BATH AFFORDS PRIVACY AND CONVENIENCE FOR YOU AND YOUR GUESTS.

SIERRA

332RLD SHOWN WITH CARMEL DECOR



THE INFLATABLE MATTRESS HIDE-A-BED SOFA FURNISHES YOU WITH PLENTY OF EXTRA STORAGE AND A COMFORTABLE SLEEPING AREA. THE BED QUICKLY INFLATES AND DEFLATES FOR EASY OPERATION.



SHOWN HERE IS THE KING BED AVAILABLE IN THE 332RLD, UNDERNEATH THE KING BED IS SIERRA'S INNOVATIVE SHOE ORGANIZER, KEEPS THE FLOOR CLEAR AND YOUR SHOES EASILY ACCESSIBLE.

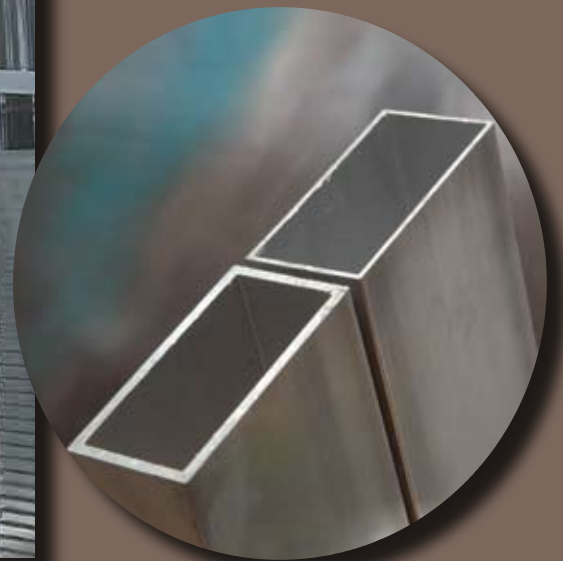


ENJOY A RELAXED CONVERSATION IN A PLACE YOU WILL BE CALLING YOUR HOME AWAY FROM HOME AS SIERRA OFFERS YOU SPACIOUS LIVING ON THE ROAD.

SIERRA



335RGT SHOWN WITH WINE DECOR



SIERRA'S ALUMINUM FRAME IS CONSTRUCTED FROM .120 GAUGE ALUMINUM WHICH PROVIDES SUPERIOR STRUCTURAL INTEGRITY. IN THE CIRCLE (RIGHT) IS SIERRA'S THICKER GRADE ALUMINUM STUDDING VS. THE COMPETITIONS THINNER GRADE.



THE DOLBY 5.1 SURROUND SOUND SYSTEM CAN ACCOMPANY A DELICIOUS DINNER OR A LIVELY GAME OF CARDS IN SIERRA'S ROOMY DINING AREA WITH FREE STANDING DINETTE.



SIERRA



SIERRA IS ABOUT QUALITY AND EXCEEDING EXPECTATIONS, THE UNDERMOUNTED SOLID SURFACE SINK APPLICATION WITH RESIDENTIAL FINISH, IS CAPABLE OF HOLDING UP TO OVER 200 LBS AND CAN WITHSTAND TEMPERATURES OF OVER 500 DEGREES. THIS IS JUST ONE EXAMPLE OF SIERRA'S COMMITMENT TO PROVIDING YOU YEARS OF ENJOYABLE RECREATION.





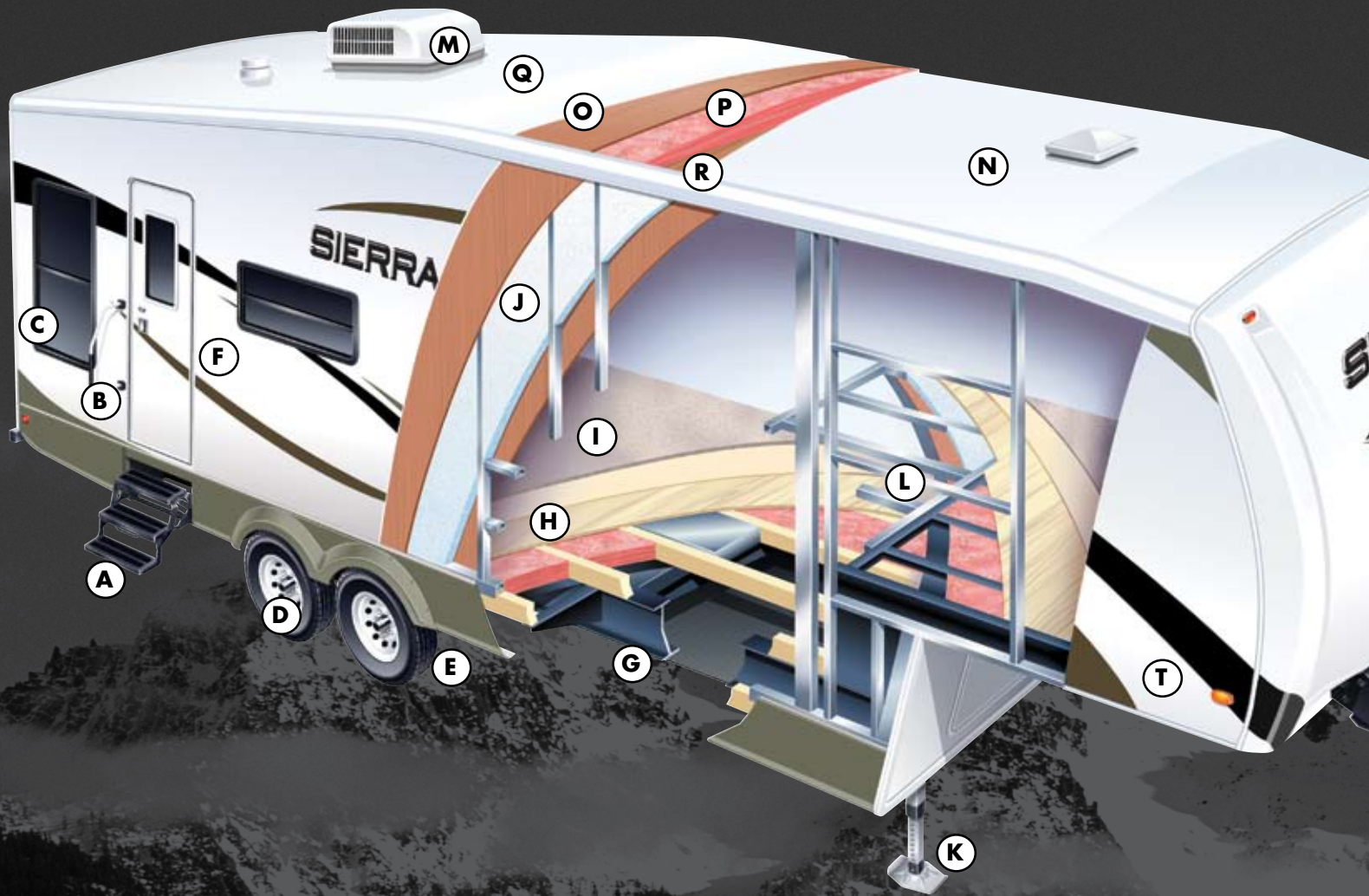
L A Z B O Y

402FKD WITH ESPRESSO DECOR



LA-Z-BOY™ HAS TEAMED UP EXCLUSIVELY WITH FOREST RIVER TO TAKE LEGENDARY COMFORT ON THE ROAD.

SIERRA



CONSTRUCTION FEATURES

- | | | | | | |
|---|---|---|--|---|---|
| A | Lighted Main Triple Entry Steps | H | 5/8" Tongue & Groove Plywood Flooring | P | Fiberglass insulation |
| B | Folding Entry Assist Handle | I | 30 oz. Carpet w/ Padding | Q | Insulated Duct for Central Air STD.
(all Models) |
| C | Tinted Windows | J | Block Foam Insulation | R | 5" Truss Roof Rafters (16" On Center) |
| D | Ultra Lube Axles | K | Power Front Jacks | S | Front Fiberglass Cap (STD.) |
| E | Radial Tires | L | Aluminum Laminated Bath Deck | T | Gel Coat Fiberglass with High
Gloss Exterior |
| F | Laminated Vacuum Bonded
Aluminum Sidewalls | M | Ducted 13.5 K BTU Air Conditioning. | U | Motorized Radius Roof Edge |
| G | 10" I-Beam Powder-Coated Frame | N | Seamless Rubber Roof (12 yr. Warranty) | | |
| | | O | 3/8" Roof Decking (Full Walk-On Roof) | | |

Sierra's construction features an aluminum framed superstructure that is lighter and more durable than the competitions wood frame.

SIERRA Standards

INTERIOR FEATURES

- Four color coordinated interiors (Carmel, Espresso, Sandstone, and Wine)
- Solid Surface Application Undermounted Sink
- Handmade Cabinetry with Screwed lumber core stile construction
- Extra Large Picture Window in Slideout Room at Dinette
- Full Coach Water Filtration System
- Upgraded innerspring mattress
- Fantastic fan in bathroom
- Designer Valance and Lambrequin Window Treatments
- Dometic® 13,500 A/C with quick cool
- Floor Ducted 35,000 BTU Furnace
- Wall Mounted Thermostat
- Wall Mounted Monitor Panel for Holding Tanks
- Vented side windows in slideouts
- 6 gal. gas/electric DSI water heater
- TV antenna w/booster
- 5.1 Dolby Digital Surround Sound
- Solid oak drawer fronts w/pine sides
- Three burner high output range w/ 22" oven
- Raised panel cabinet doors (uppers and lowers)
- Neo angle shower w/glass door (where available)
- Designer Window Shades
- Satellite and Cable Hookup with RG-6
- Laundry chute (where available)
- Overhead cabinet in slideout
- Carbon Monoxide Detector
- 8 Cubic Ft. Double Door Refrigerator
- Residential Style Vacuum Formed Black Glass Refer Fronts
- Ceiling Fan w/Lighting Kit
- Shower Surround with Etched Tile Pattern

- High Rise Kitchen Faucet
- Flush Floor Hydraulic Slideouts
- 2 Decorative Throw Pillows on Sofa
- Upgraded Decorative lighting throughout
- Laminated Bathroom Deck (Fifth Wheel)

EXTERIOR FEATURES

- Aluminum-framed, vacuum bond laminated sidewalls
- Fully Enclosed underbelly, insulated with radiant heat.
- Ultra lube axles
- Tinted windows 80% UV-Ray Protection
- Dometic™ "One-Touch" Electric Awning
- 5/8" tongue & groove floor decking
- Power front jacks (fifth wheels)
- 5" truss roof rafters
- 3/8" roof decking (full walk-on roof)
- 2" x 3" floor joists 12" on center
- R-10 sidewall construction
- Radial tires
- Automotive-style fender skirts
- 30 lb. double LP tanks w/auto changeover
- Hitch light
- Porch light w/interior switch
- Step light – main entrance
- Triple step w/9" riser
- Enclosed gooseneck (5th wheels only)
- Patio Recreation light with interior switch
- Roof ladder (Std. on Fifth-Wheels)
- Black Tank Flush
- 2 Exterior Speakers
- Rain Gutters With Drip Spouts
- Heavy Duty Lockable Baggage Doors
- Foldable Grab Handle with Foam Grip

SIERRA Options

INTERIOR OPTIONS

- King Bed (Where Available)
- Sofa hide-a-bed with Air Mattress
- Phone jack
- Raised oak refrigerator door insert
- Free-standing dinette with 4 chairs
- La-Z-Boy Recliner IPO Swivel Rocker
- Glider recliner IPO swivel rocker
- Bar Stools
- Washer/Dryer prep with 50 amp service per floorplan

EXTERIOR OPTIONS

- Equaflex™ Equalizer System
- Outside shower
- Spare tire, carrier and cover
- Aluminum wheels
- Small exterior storage at dinette
- 15K Air conditioner IPO 13.5K
- Water heater 10 gal. gas/electric DSI
- Second air conditioner
- Chrome hub and ring
- Fantastic fan with wall switch

SIERRA Signature Package

- High Gloss Gel-Coat Fiberglass
- Wrought Iron Package
- 5.1 Dolby Digital Surround Sound System
- Flat-Screen and Flat Panel LCD/HD TV's
- AM/FM CD/DVD Player w/ MP3 Capabilities



LIGHTED MAIN ENTRY STEP



POWER TOWER



WROUGHT IRON PACKAGE



LP BOTTLES

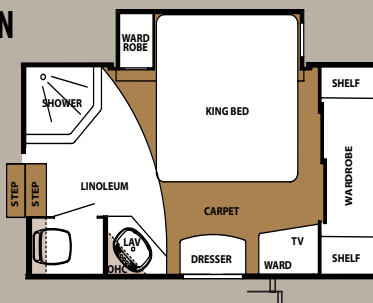


PASS THROUGH STORAGE

SIERRA

TRAVEL TRAILER FLOORPLANS

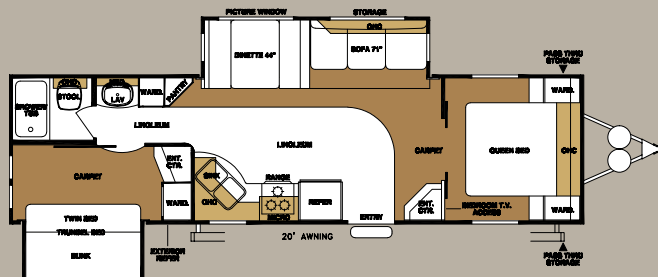
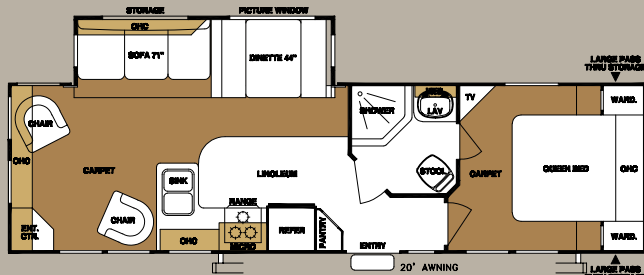
KING BED OPTION



King Bed Optional in Travel Trailers & Fifth Wheels. (100" Bed Slides Only)

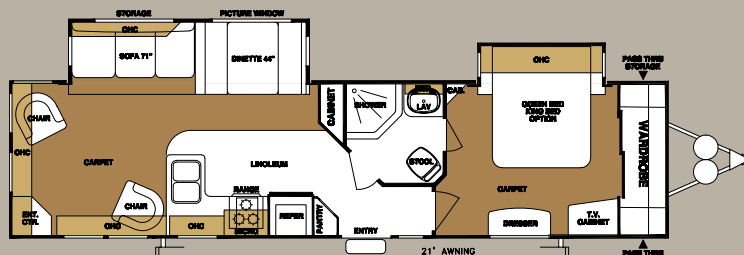
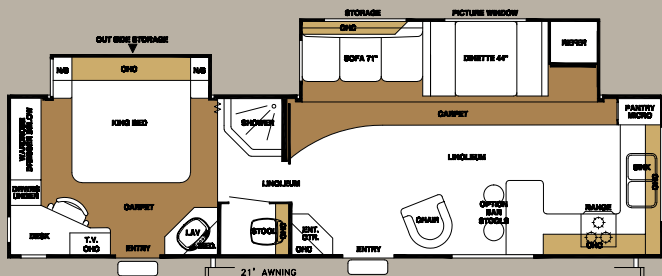
291RL

302BHD



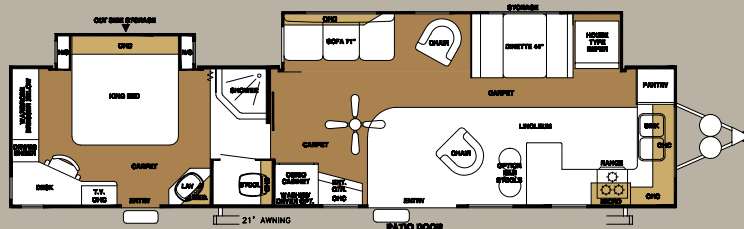
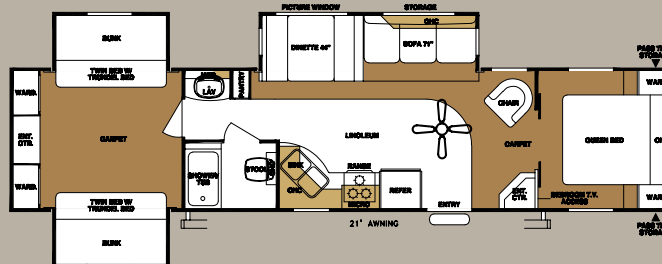
322FKD

332RLD



351BHT

402FKD



Travel Trailers

Fifth Wheels

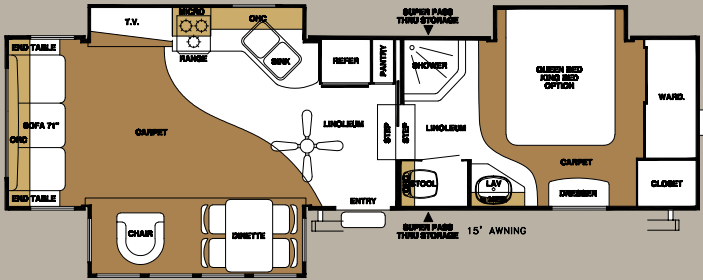
	291RL	302BHD	322FKD	332RLD	351BHT	402FKD	296RLT	305RGS	305RLW	316BHT	335QBQ	335RGT	345QB	345RET	355RLT	375QBQ
Hitch weight	900	750	1,000	1,132	870	2,067	TBD	2,333	2,230	2,180	1,879	2,401	2,569	1,946	2,170	2,110
Axle weight	6,355	7,220	7,220	7,677	8,625	8,036	TBD	7,643	6,990	8,640	9,612	8,698	8,731	8,338	8,010	9,390
Ship weight*	7,255	7,970	8,380	8,809	9,495	10,103	TBD	9,976	9,220	10,820	11,491	11,099	10,852	10,284	10,180	11,500
GVWR	11,060	10,910	11,160	13,142	12,870	14,067	TBD	14,333	14,230	14,180	13,879	14,401	14,278	13,946	14,170	14,110
Exterior Length	30'5"	34'8"	37'2"	37'3"	39'10"	41'10"	TBD	36'3"	34'0"	37'10"	38'2"	36'10"	39'0"	38'4"	37'0"	40'5"
Exterior Height	11'	11'	11'	11'	11'6"	11'6"	12'8"	12'8"	12'8"	12'8"	12'8"	12'8"	12'8"	12'8"	13'4"	13'4"
Awning	18'	20'	18'	21'	21'	21'	21'	18'	18'	21'	21'	15'	20'	18'	15'	21'
Gray Water Cap.	108 Gal.	88 Gal.	108 Gal.	108 Gal.	54 Gal.	108 Gal.	108 Gal.	108 Gal.	54 Gal.	108 Gal.	108 Gal.	86 Gal.	108 Gal.	108 Gal.	54 Gal.	108 Gal.
Black Water Cap.	54 Gal.	32 Gal.	54 Gal.	54 Gal.	54 Gal.	54 Gal.	54 Gal.	54 Gal.	54 Gal.	108 Gal.	108 Gal.	54 Gal.	108 Gal.	54 Gal.	54 Gal.	54 Gal.
Fresh Water Cap.	** 52 Gal.	54 Gal.	54 Gal.	54 Gal.	54 Gal.	54 Gal.	54 Gal.	54 Gal.	54 Gal.	54 Gal.	54 Gal.	54 Gal.	54 Gal.	54 Gal.	54 Gal.	54 Gal.

* Ship weights do not include options. "TBA" Not available at time of printing. ** Fresh water capacity includes the 6 gallon water heater.

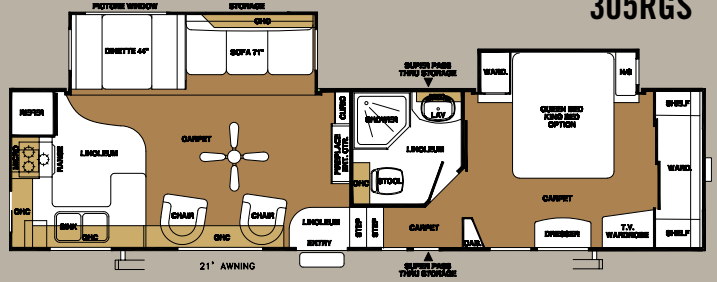
All specifications, models and layouts are subject to change without notice. Model number does not necessarily reflect the overall length of a particular unit.

FIFTH WHEEL FLOORPLANS

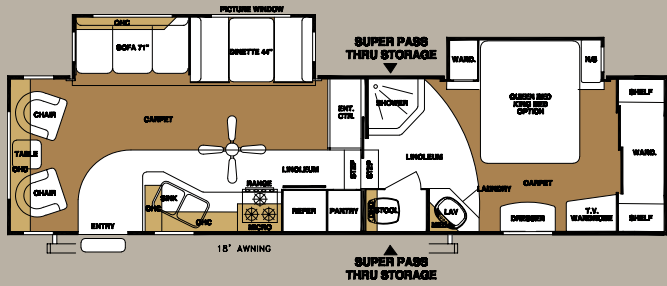
296RLT



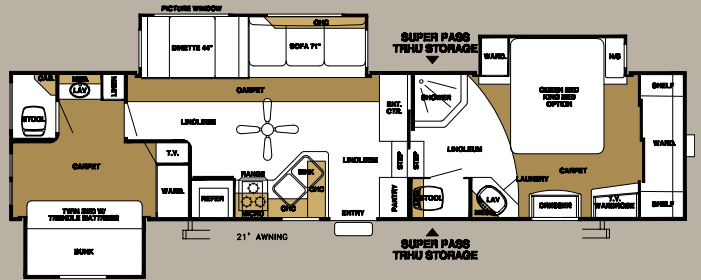
305RGS



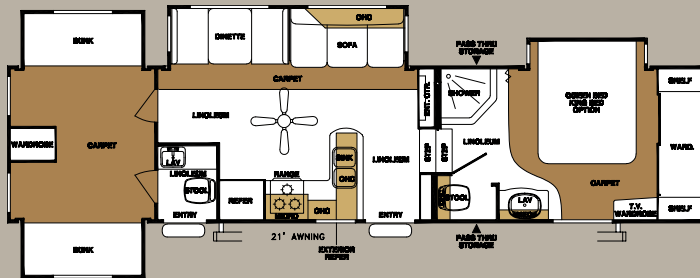
305RLW



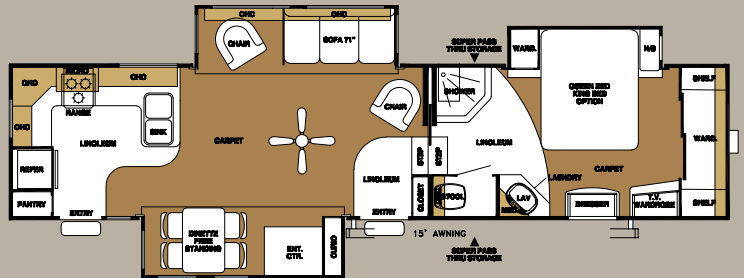
316BHT



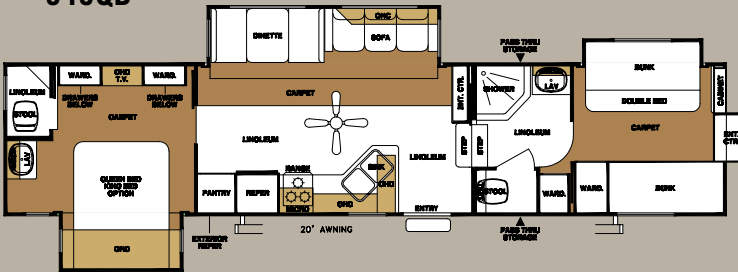
335QBQ



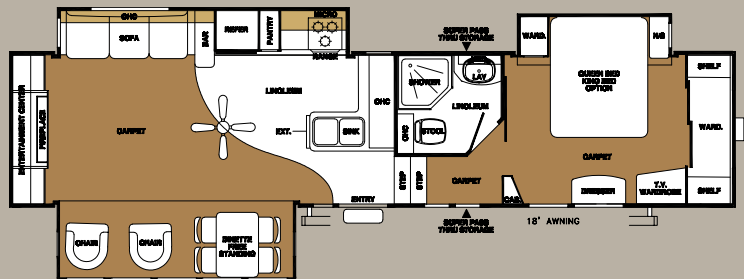
335RGT



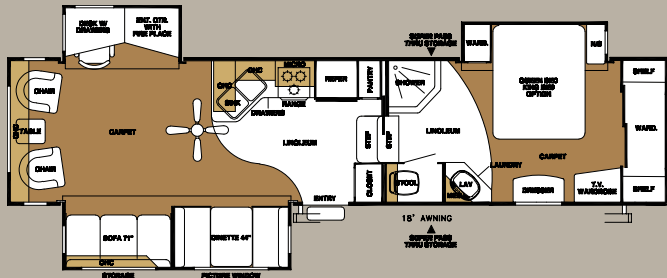
345QB



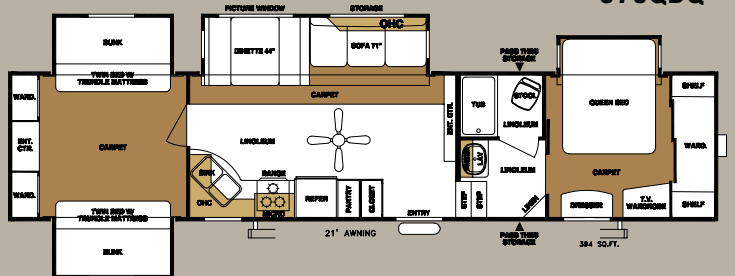
345RET



355RLT



375QBQ





Forest River, Inc., in affiliation with Coach-Net®, is providing one (1) year of free Roadside Assistance to all retail purchasers of new Sierra 2008 Travel Trailers and Fifth Wheels. This is just one more way to say "Thank You" and to ensure you have an enjoyable camping experience.



Forest River Encourages You to Buy Locally

Forest River, Inc. strongly encourages our retail customers to purchase from their local dealership whenever possible due to the following factors:

- Our Dealers are as a rule, independently owned and operated businesses. Outside of those customers they personally sold products to, they are not contractually obligated to perform warranty service on Forest River products that were purchased elsewhere. There may be an occasion that you would be required to return to the point of purchase to satisfy warranty requirements.
- Although many dealerships will eventually service products not purchased at their place of business, they will usually take care of their customers and other Forest River customers who are traveling away from their local dealer as they would their own.
- Local purchases allow a customer to establish a relationship with a dealer close to home. This relationship provides the customer with a convenient location for service and support from a "home town" professional.
- The opportunity for a thorough PDI (Pre Delivery Inspection) and product orientation is an additional benefit of buying from your local dealer. Further providing the opportunity for refresher courses or the ability to get questions answered much more conveniently.
- For our Canadian customers, there are also requirements which must be met to bring an RV purchased out of the country to their home. Although not insurmountable, these requirements may involve such things as additional inspections and certifications, taxes and fees. Your local Canadian Dealer is a professional at meeting these requirements.

Forest River's goal is for all RV Owners to fully enjoy their RV experience. In light of this goal, and considering the advantages of buying local, we encourage you to be thorough when determining what product to purchase and which dealer to purchase it from as both are key to your ultimate satisfaction and the realization of your dreams.

FOREST RIVER'S HALLMARK OF EXCELLENCE:

PRE-DELIVERY INSPECTION FACILITIES

THAT'S 20,000 SQUARE FEET OF QUALITY ASSURANCE.

THE BARE ESSENTIALS FOR A PREMIUM PRODUCT.

Brought online in 2005, Forest River is proud of its state-of-the-art test facility. This beautiful building blends many of the old tried and true methods of testing our diverse types of RVs with new innovative ways of solving quality issues. Being centrally located to most Forest River manufacturing facilities, this 20,000 square foot PDI (Pre-delivery Inspection) test building gives immediate daily feedback to individual managers. This assures the production facilities that nothing has slipped by the plant's quality assurance personnel and the units are ready to ship.



Forest River, Inc. 55470 CR 1 Elkhart, IN 46515-3030
 Phone: 574.533.5934 Fax: 574.533.2965
www.forestriverinc.com www.forestriveraccessories.com

COMPLIMENTS OF

All illustrations and specifications contained in this literature are based on the latest product information at time of publication. Forest River reserves the right to make changes in prices, colors, materials, equipment and specifications at anytime without notice and assumes no responsibility for any error in this literature. All units are shipped F.O.B. Goshen, Indiana.

CONSULT YOUR LOCAL DEALER FOR WARRANTY INFORMATION. FOR 0553