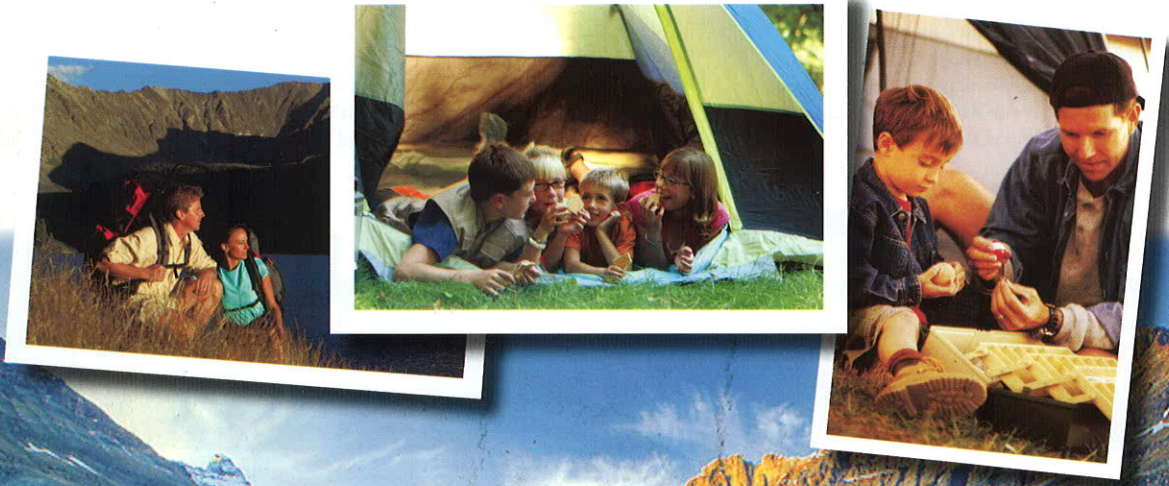
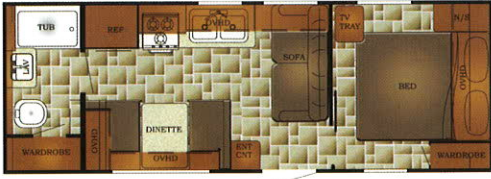


# CONQUEST



[www.gulfstreamrvtrailers.com](http://www.gulfstreamrvtrailers.com)

# Floor Plans & Specifications



## MODEL 24RBL

Length..... 26'1"  
Width..... 8'  
Height w/AC..... 10' 9"  
Furnace..... 20,000 BTU

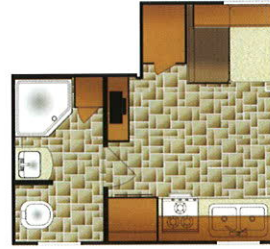
Carrying Capacity ..... 3,312  
Hitch Weight..... 890  
Dry Weight..... 4,098  
Fresh Water..... 54  
Waste Tanks ..... 74



## MODEL 24RKL

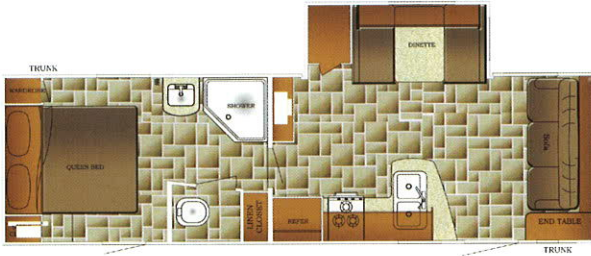
Length..... 27'11"  
Width..... 8'  
Height w/AC..... 10' 9"  
Furnace..... 20,000 BTU

Carrying Capacity ..... 1,890  
Hitch Weight..... 890  
Dry Weight..... 5,683  
Fresh Water..... 54  
Waste Tanks ..... 74



## MODEL 25FQL

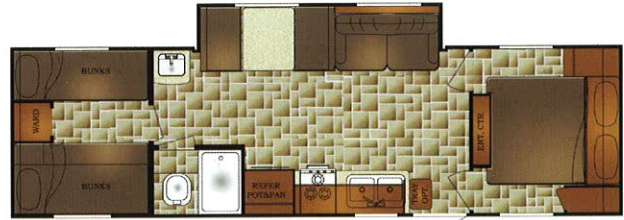
Length..... 29'9"  
Width..... 8'  
Height w/AC..... 10' 9"  
Furnace..... 20,000 BTU



## MODEL 27DSL

Length..... 31'5"  
Width..... 8'  
Height w/AC..... 10' 9"  
Furnace..... 20,000 BTU

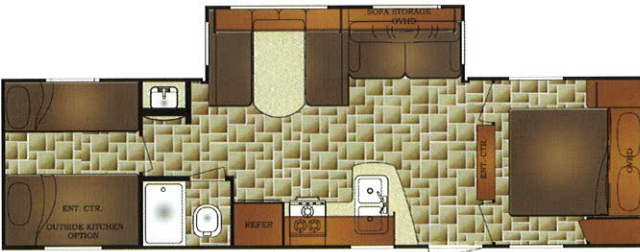
Carrying Capacity ..... 1,810  
Hitch Weight..... 990  
Dry Weight..... 6,180  
Fresh Water..... 54  
Waste Tanks ..... 74



## MODEL 279QBL

Length..... 32'7"  
Width..... 8'  
Height w/AC..... 10' 9"  
Furnace..... 20,000 BTU

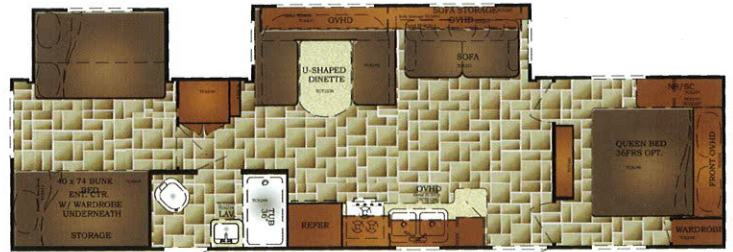
Carrying Capacity ..... 1,929  
Hitch Weight..... 860  
Dry Weight..... 5,931  
Fresh Water..... 54  
Waste Tanks ..... 74



## MODEL 297DBS

Length..... 32'7"  
Width..... 8'  
Height w/AC..... 10' 9"  
Furnace..... 30,000 BTU

Carrying Capacity ..... 3,260  
Hitch Weight..... 720  
Dry Weight..... 6,691  
Fresh Water..... 54  
Waste Tanks ..... 111



## MODEL 323TBR

Length..... 35'8"  
Width..... 8'  
Height w/AC..... 10' 9"  
Furnace..... 30,000 BTU

Carrying Capacity ..... 3,300  
Hitch Weight..... 850  
Dry Weight..... 7,850  
Fresh Water..... 54  
Waste Tanks ..... 74



## MODEL 398DLS

Length..... 39'11"  
Length w/o Hitch ..... 35'7"  
Width..... 8'  
Height w/AC..... 11' 11"  
Furnace..... 30,000 BTU

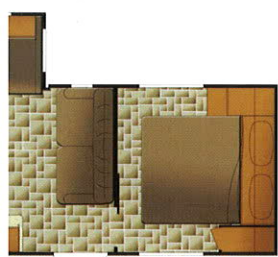
Carrying Capacity ..... 2,310  
Hitch Weight..... 1,300  
Dry Weight..... 9,030  
Fresh Water..... N/A  
Waste Tanks ..... 111



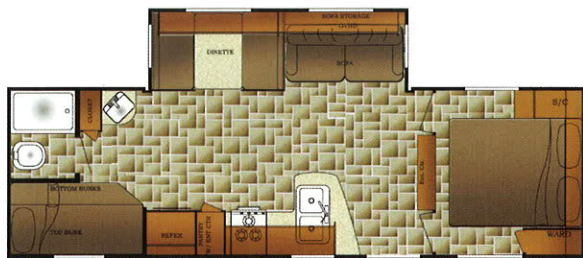
## MODEL 398FRS

Length..... 39'11"  
Length w/o Hitch ..... 35'7"  
Width..... 8'  
Height w/AC..... 11' 11"  
Furnace..... 30,000 BTU

Carrying Capacity ..... 2,310  
Hitch Weight..... 1,300  
Dry Weight..... 9,030  
Fresh Water..... N/A  
Waste Tanks ..... 111

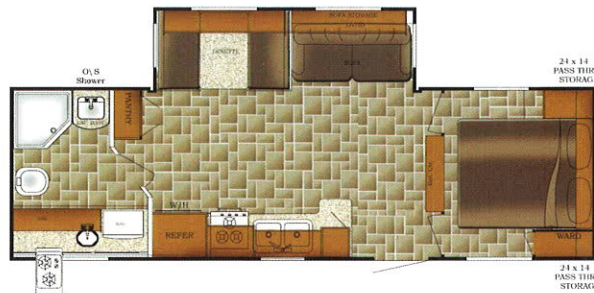


Carrying Capacity .....2,386  
 Hitch Weight.....800  
 Dry Weight.....5,414  
 Fresh Water.....54  
 Waste Tanks.....74



**MODEL 269BHL**  
 Length ..... 30'8"  
 Width .....8'  
 Height w/AC..... 10' 9"  
 Furnace..... 20,000 BTU

Carrying Capacity ..... 1,710  
 Hitch Weight.....820  
 Dry Weight.....6,110  
 Fresh Water.....54  
 Waste Tanks .....74



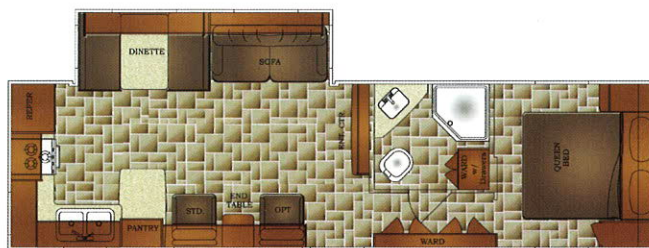
**MODEL 269RBK**  
 Length ..... 30'8"  
 Width .....8'  
 Height w/AC..... 10' 9"  
 Furnace..... 20,000 BTU

Carrying Capacity ..... 1,710  
 Hitch Weight.....820  
 Dry Weight.....6,110  
 Fresh Water.....54  
 Waste Tanks .....74



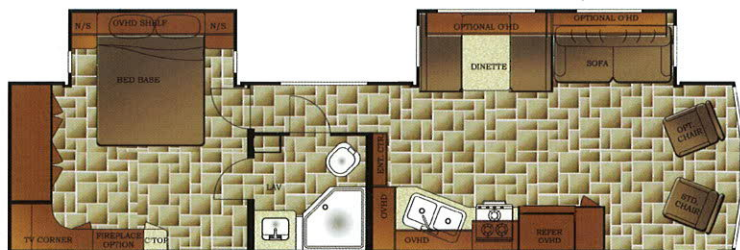
**MODEL 281RLS**  
 Length .....32'3"  
 Width.....8'  
 Height w/AC..... 10' 9"  
 Furnace.....30,000 BTU

Carrying Capacity .....4,400  
 Hitch Weight.....930  
 Dry Weight..... 6,930  
 Fresh Water.....54  
 Waste Tanks .....74



**MODEL 295SBW**  
 Length .....34'9"  
 Width.....8'  
 Height w/AC..... 10' 9"  
 Furnace.....30,000 BTU

Carrying Capacity ..... 4,473  
 Hitch Weight.....1,080  
 Dry Weight..... 6,767  
 Fresh Water.....54  
 Waste Tanks .....74



**MODEL 34FLS**  
 Length ..... 38'8"  
 Length w/o Hitch .....34'4"  
 Width.....8'  
 Height w/AC..... 10' 9"  
 Furnace.....30,000 BTU

Carrying Capacity ..... 3,314  
 Hitch Weight.....1,340  
 Dry Weight..... 8,066  
 Fresh Water.....N/A  
 Waste Tanks .....74



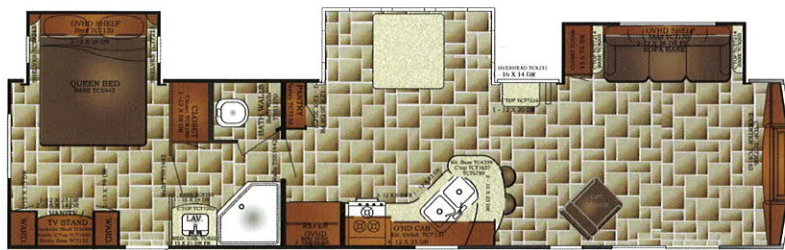
**MODEL 36FRS**  
 Length ..... 39'11"  
 Width.....8'  
 Height w/AC..... 10' 9"  
 Furnace.....30,000 BTU

Carrying Capacity ..... 2,782  
 Hitch Weight.....1,120  
 Dry Weight..... 9,453  
 Fresh Water.....N/A  
 Waste Tanks .....74



**MODEL 408TBS**  
 Length .....40'6"  
 Length w/o Hitch .....36'2"  
 Width.....8'  
 Height w/AC..... 11' 11"  
 Furnace.....30,000 BTU

Carrying Capacity ..... 2,790  
 Hitch Weight.....1,360  
 Dry Weight..... 9,570  
 Fresh Water.....N/A  
 Waste Tanks .....148



**MODEL 408FLR**  
 Length .....40'6"  
 Length w/o Hitch .....36'2"  
 Width.....8'  
 Height w/AC..... 11' 11"  
 Furnace.....30,000 BTU

Carrying Capacity ..... 2,870  
 Hitch Weight.....1,170  
 Dry Weight..... 9,300  
 Fresh Water.....N/A  
 Waste Tanks .....111

# CONQUEST



## Standard Features

- Hard-wired Slide Rooms
- Large Double Door Refrigerator
- Gas Water heater w/ Auto Ignition
- Pass-Thru Storage On Most Models
- 13,500 BTU Air Conditioner
- Decorator Mini-Blinds
- Color Coordinated Awning
- 30" Wide Radius Entry Door w/ Window
- Hardwood Mortise & Tenon Cabinet Doors
- Heat & Scald Resistant Kitchen Counter Top with Backsplash
- Carousel Microwave Oven
- Large Storage Chest Behind Sofa
- Queen Bed w/ Innerspring Mattress (Most Models)
- Wall Mounted Light Switches
- Designer Bedspreads
- LP Leak Detector & CO<sub>2</sub> Detector
- Smoke Detector
- Roller Bearing Drawer Guides
- Space Saver under Floor Water Tank
- Power Roof Vent in Bath
- Deluxe Wallpaper Border in Living Room
- Cable TV Hook-Up
- Bed-Lift Pistons (Where Applicable)
- Rain Guard Gutter Rail w/ Extended Down Spouts
- Insulated Exterior Storage Compartments
- TV Antenna w/ Booster

- EZ Access Gas Bottle Cover
- Patio And Hitch Lights
- Step Light
- Pass Through Storage Light
- Sewer Termination Light
- Large Residential Style Kitchen Sink
- Double or Triple Easy-Open Entry Steps
- AM/FM/CD/DVD Touch Plex Stereo Theatre
- Water Heater Bypass
- TV Jack in Bedroom
- Systems Monitor Panel
- In-Floor Insulated Ducted Heat (Frees Up More Cabinet Space)
- Power Range Hood w/ Light and Fan
- All Walls Mounted ON Floors (Not Next To Them)
- Decked One-Piece Roof Featuring A 12-Year Warranty
- 2 x 4 1/2" Residential Style Bow Truss Roof System (Strongest Construction Available) w/ Ducted Air Conditioner Option
- Sidewalls Are Screwed To Ceiling And Floor And Strapped w/ Strong Galvanized Steel Straps
- Dadoed Belt-Rail Wall Construction Combined w/ Galvanized Steel Straps & Screws for Unmatched UNI-BODY Strength
- 5/8" Floor Decking Glued & Screwed
- Hand-cut & Glued Fiberglass Insulation
- Clear Span Power Slide-Out Rooms w/ Steel Header
- Solid Box & I-Beam Heavy Duty Steel Frames

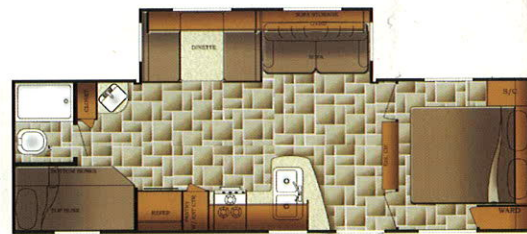
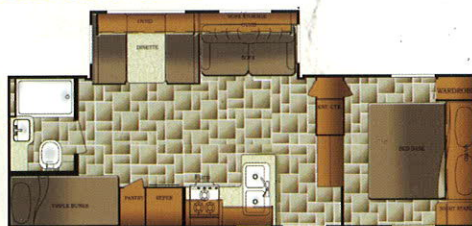
## Popular Options

- 2 Door Slide-Out Overhead Cabinet With A 42" X 36" Dinette Window
- Tub ipo Shower Pan
- Fiberglass "Slick Side" Exterior
- Hide-a-Bed Sofa (Select Slide-Outs)
- Spare Tire, Carrier and Cover
- Bright Trim Package: Wheel Trim & Polished Bumper Cover, Swing Away Assist Handle
- Outside Shower
- Sunroom Option (w/ Table, 4 Chairs, 4 Vista Windows)
- Crank Down Stabilizer Jacks
- Electric Hitch Jacks (5th Wheels)
- Ceiling Paddle Fan (Lodge Series)
- Fantastic Attic Fan
- Fireplace
- Outside Kitchen (Select Models)
- Ducted Air Conditioning
- Pleated Shades
- 15,000 BTU Air
- Beauflor Linoleum
- Outside Speakers

## Optional Supreme Package Includes:

- Pleated Shades
- Tub Surround
- Scare Light
- Residential Medicine Cabinet
- Outside Speakers
- Swing Away Grab Handle
- Pots-n-Pans Drawer

## Fifth Wheel Plans & Specifications



### MODEL 245FBW

Length.....28'3"  
Width.....8'  
Height w/AC.....11'3"  
Furnace.....25,000 BTU

Carrying Capacity.....1,961  
Hitch Weight.....1,390  
Dry Weight.....6,429  
Fresh Water.....54  
Waste Tanks.....74

### MODEL 24FTBS

Length.....27'5"  
Width.....8'  
Height w/AC.....11'3"  
Furnace.....25,000 BTU

Carrying Capacity.....1,840  
Hitch Weight.....1,150  
Dry Weight.....6,520  
Fresh Water.....54  
Waste Tanks.....74

### MODEL 28FWBH

Length.....31'4"  
Width.....8'  
Height w/AC.....12'  
Furnace.....25,000 BTU

Carrying Capacity.....4,160  
Hitch Weight.....1,930  
Dry Weight.....7,810  
Fresh Water.....54  
Waste Tanks.....111

For more information and available options, contact your local Gulf Stream Dealer, [www.GulfStreamCoach.com](http://www.GulfStreamCoach.com), or Gulf Stream Coach, Inc. Gulf Stream: Reserves the right to make changes in prices, colors, materials, components, and specifications and to discontinue models at any time without notice or obligation. Assumes no responsibility for any error in type or print reproduction of specifications or floor plans in this brochure. Photos may show equipment or items that are optional and are not included in the price of the trailer. Experience and review a current model at your nearest dealer.

©2011 Gulf Stream Coach, Inc. Nappanee, Indiana U.S.A. 04/11

[www.gulfstreamrvtrailers.com](http://www.gulfstreamrvtrailers.com)

All weights shown are in dry condition, without options or fluids. Please add additional options and features. Consult the weight tag inside kitchen cabinet and your tow vehicle owners manual for more information.



Post Office Box 1005 Nappanee, IN 46550

• Your Gulf Stream Coach Dealer •

**Jerry's Trailers & Campers, Inc.**

2601 South 13th St.  
Norfolk, NE 68701  
(402) 371-1306

[www.JerrysTrailers.com](http://www.JerrysTrailers.com)