

Laredo

By Keystone



More Best in Class
Features than Competition!

Laredo
By Keystone



Laredo— One of a Kind

“Best in Class” - With Laredo, this is more than a slogan - it's the strategy that guides us everyday as we aspire to create the perfect Recreational Vehicle. If you desire an easy-to-tow fifth wheel that doesn't skimp on features, conveniences or quality, Laredo will offer you an RV that is truly “BEST IN CLASS” ... BEST IN VALUE.

**When you are the
Best in Class ...**



316RL shown in Copper Ridge Decor



1. Your kitchen countertops are made of genuine Corian and paired with an upgraded faucet and under mount sink.



2. Every drawer includes full extension steel ball bearing drawer guides for strength and maximum storage.



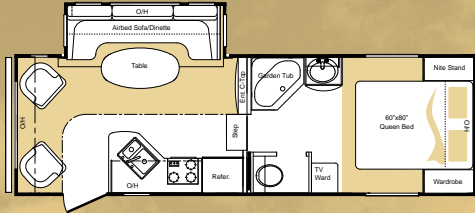
3. You have tall, residential-style kitchen cabinets that have convenient shelves.



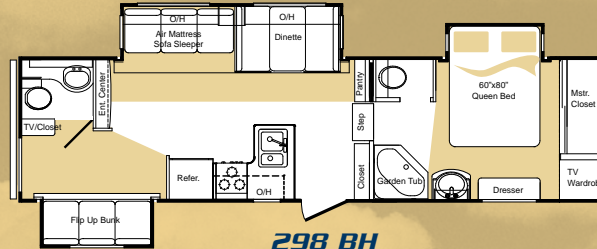
316RL shown in Copper Ridge Decor



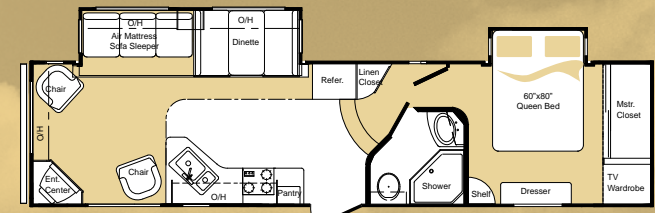
Floorplans & Construction



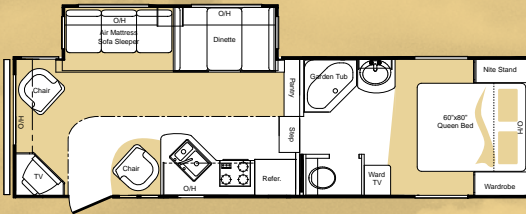
245 RL



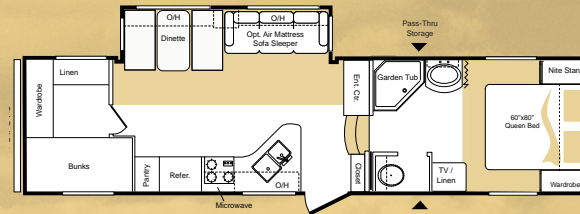
298 BH



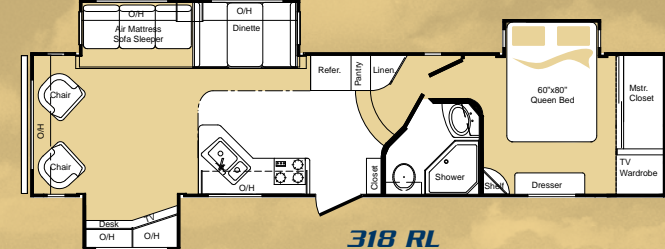
316 RL



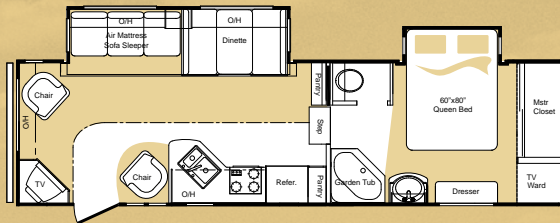
265 RL



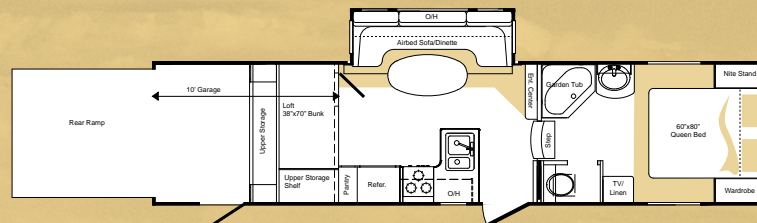
30 BH



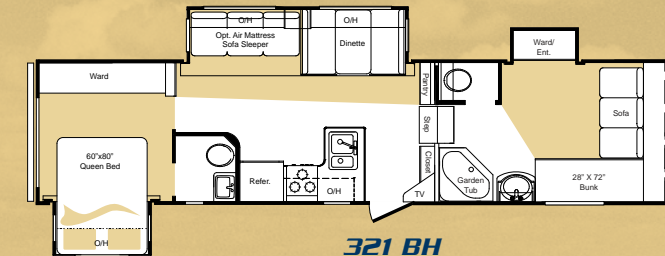
318 RL



266 RL

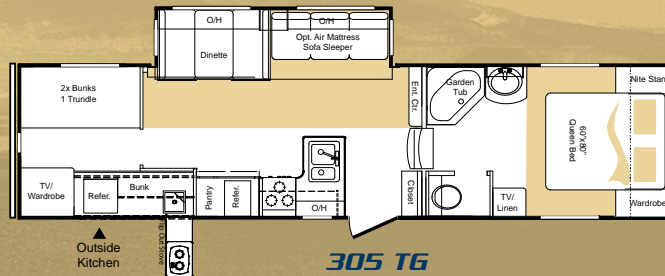


301 SLR

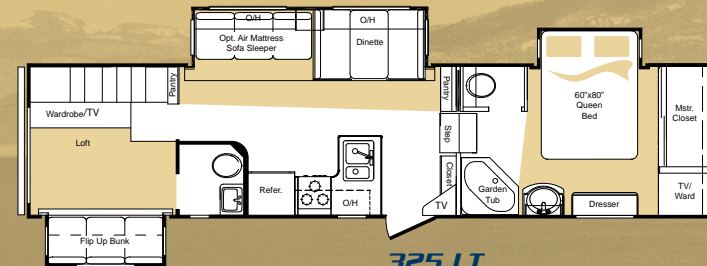


321 BH

Laredo
By Keystone



305 TG



325 LT

WALL CONSTRUCTION (R-9)

- ① Gel-coated fiberglass exterior
- ② 1/8" Lauan wood backer
- ③ Hi-density block foam insulation
- ④ Radius window corner blocks
- ⑤ 2" Welded aluminum sidewall studs
- ⑥ Fiberglass batten insulation
- ⑦ High-gloss front fiberglass cap
- ⑧ Metal backing strips

ROOF CONSTRUCTION (R-11)

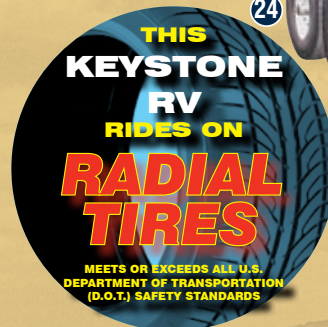
- ⑨ One-piece EPDM rubber roof with 12-year warranty
- ⑩ 3/8" Fully walkable roof decking
- ⑪ Fiberglass batten insulation
- ⑫ 5" "Snow Load" roof trusses
- ⑬ 1/8" Ceiling decking with vinyl protection

FLOOR CONSTRUCTION (R-14)

- ⑭ Residential grade carpet with stain protection
- ⑮ Residential grade carpet padding
- ⑯ 5/8" Seamless wood floor decking with limited lifetime warranty
- ⑰ Residential grade linoleum
- ⑱ In-floor ducted heat
- ⑲ Darco wrap (main floor)
- ⑳ Fiberglass batten holding tank insulation
- ㉑ One-piece, fluted polypropylene fully enclosed sub-floor
- ㉒ 3" floor joists on 12" - 16" centers

TIRES AND CHASSIS

- ㉓ 10" or 8" steel "powder coated" I-beam frame
- ㉔ 15" or 16" radial tires
- ㉕ EZ Lube axles



Fully enclosed and heated underbelly with heated tanks and dump valves will extend your camping season and give you a smooth ride when towing.

	245 RL	265 RL	266 RL	298 BH	30 BH	301 SLR	305 TG	316 RL	318 RL	321 BH	325 LT
Shipping Weight	7335	7888	8200*	9690	8780	9190	8800*	9030*	9510*	TBD	TBD
Carrying Capacity	2465	2652	2600*	2100	2720	2500	2700*	2985*	2420*	TBD	TBD
Hitch	1310	1360	1390*	1690	1535	1930	1600*	1855*	1770*	TBD	TBD
Exterior Length	26' 11"	29' 10"	29' 11"	32' 10"	33' 10"	34' 11"	34' 7"	35'	36'	36'	36' 2"
Exterior Height	12' 4"	12' 4"	12' 4"	12' 7"	12' 6"	12' 7"	12' 6"	12' 7"	12' 7"	TBD	TBD
Fresh Water Gal.	51	51	51	55	51	55	51	55	55	TBD	TBD
Waste Water Gal.	40	40	40	75	40	40	40	40	40	TBD	TBD
Grey Water Gal.	40	40	40	75	40	68	40	75	75	TBD	TBD

*estimate

More Best in Class Features ...



Exterior storage is necessary and Laredo delivers with up to 129 cubic feet of unobstructed pass thru storage.



This cleverly designed roto-cast tub was created as a convenient place to store wet or greasy items. However, some of our customers have found other innovative applications.



A convenient flip of a switch allows the Laredo to be leveled by powerful 12-volt electric stabilizer jacks.



An electric slideout Stor-Mor utility tray is great for bikes, firewood and portable generators.



The Laredo sofa sleeper with electrically operated air mattress also offers over 8-cubic feet of storage beneath the bed.



Push button controls allow you to put the electric awning in or out in just a few seconds.



Laredo's audio package includes a 12 volt in wall AM, FM, CD, DVD player with power antenna and a convenient auxillary input jack for MP3/iPod. Surround style ceiling mounted speakers and exterior marine grade speakers are standard.



"Best in Class" innovation never stops with the introduction of the "Outdoor Kitchen" - a Laredo exclusive. (Found on the 305 TG.)

MAX TURN TECHNOLOGY

When given the challenge of creating a Recreational Vehicle that maximizes turning radius, reduces fuel consumption and pulls great on the worst of roads, Laredo engineers utilized MAX TURN TECHNOLOGY to create a fifth wheel that has become the benchmark for Hi Performance Towing.



Laredo's state of the art fiberglass cap also includes Hitch Vision and docking lights which allow customers to hook-up with ease.

**MAX
TURN**

TECHNOLOGY

#1

**IN TURNING
RADIUS**

UTILIZING THE NEWEST DESIGN IN FRONT CAP AND FRAME CONSTRUCTION TO CREATE INDUSTRY LEADING TURNING RADIUS!

TESTS HAVE SHOWN THAT MAX TURN TECHNOLOGY PROVIDES A **7%** TURNING ADVANTAGE OVER THE NEXT CLOSEST COMPETITOR

PATENT PENDING

SEE MYTH BUSTING FOR DETAILS AT WWW.KEYSTONE-LAREDO.COM

Super Sport Suspension



Radial tires & aluminum wheels provide both safety and a sporty look!



Equa Flex rubber suspension with heavy duty axles.



Heavy duty 12" electric brakes.

Laredo's Super Sport Suspension will absorb all the "shock waves" created by potholes and other road irregularities. Equipped with larger heavy duty 12" brakes, Laredo can be stopped easily when braking.

Laredo Decors



Copper Ridge



Rain Forest



Birch

FIFTH WHEEL CONSTRUCTION/FEATURES

Tires & Chassis

8"-10" powder-coated I-Beam frame
5200 lb. Ultra-Lube axles
Leaf spring "equalizing" suspension system
225/75R15D radial tires (245, 265, 266, 30, 305)
235/80R16E radial tires (298, 301, 316, 318, 321, 325)
12" electric brakes
Manual override for slideouts
Full-size spare tire
Adjustable extended hitchpin
Electric bike/storage rack (200# limit)

EXTERIOR

Heated, enclosed holding tanks
Fully enclosed underbelly
Huge, lighted pass-through storage compartments
Deep-tint safety-glass windows
Exterior shower
Entry assist handle
Exterior marine grade speakers
Rain gutters with downspouts
Porch light
Patio scare light
Utility light
Electric patio awning
Rear ladder (FW)
Electric front jacks (FW)
Stabilizer jacks

INTERIOR

Living Area

AirMattress Sleeper Sofa with 60"x 80" Bed
6' 3" slideroom height
Residential carpeting and carpet pad
Stain-resistant fabrics
Day/night shades
Raised-panel oak mortise-and-tenon cabinet doors
Entertainment center with TV cabinet
Residential full extension drawer guides
Overhead cabinets in slideouts
Ventilating windows on slideout end walls

Kitchen

Residential-size overhead cabinets
Corian countertops with full sink cover
60/40 deep-bowl undermount kitchen sink
Residential metal faucet
Linoleum kitchen floor
Deep, real wood drawers with full extension drawer guides

Bathroom

Residential fiberglass tubs & showers
Tub surround
Shower door
Residential adjustable shower head
Porcelain foot-pedal flush toilet
Large, residential-size bath sink
Residential-style medicine cabinet
Skylight over bath
Power roof vent

Bedroom

60" x 80" deluxe innerspring mattress
Heavily quilted bedspread with pillow shams
High-capacity wardrobes
TV hook-up
6'2" of headroom at foot of bed

Appliances

Large, 8-cu.ft. double-door refrigerator (298, 301, 316, 318, 321, 325)
Large, 6-cu.ft. double door refrigerator (245, 265, 266, 300, 305)
Over-the-range microwave
12V AM/FM/CD/DVD home theater system
13,500 BTU ducted roof A/C
High output range with auto-igniter and 22" oven

Utilities

Easy access double 30-lb. LP bottles with auto changeover E.I.
30,000 BTU high-output furnace with automatic ignition
10 Gallon E.I. gas/elec. DSI hot water heater (298, 301, 316, 318, 321, 325)
6 Gallon gas/elec. DSI hot water heater (245, 265, 266, 30, 305)
Winter Guard winterizing kit
Water heater bypass kit
Systems monitor panel
55-amp convertor
30-amp power cord
Cable & satellite hook-ups

Safety

LP gas leak detector
Smoke detector
Carbon monoxide detector
Fire extinguisher
12" Electric brakes with breakaway switch
Safety glass windows

OPTIONAL EQUIPMENT

15,000 BTU ducted roof A/C
Freestanding dinette with 4 Chairs
26" LCD HD TV
15,000 BTU ducted roof A/C
Freestanding dinette w/ 4 chairs

Product information is as accurate as possible as of the date of publication of this brochure. Features, floor plans, and specifications are subject to change without notice. Please also consult Keystone's web site at KeystoneRV.com for more current product information and specifications. Tow Vehicle Disclaimer: CAUTION: Owners of Keystone recreational vehicles are solely responsible for the selection and proper use of tow vehicles. All customers should consult with a motor, vehicle manufacturer or their dealer concerning the purchase and use of suitable tow vehicles for Keystone products. Keystone disclaims any liability or damages suffered as a result of the selection, operation, use or misuse of a tow vehicle. KEYSTONE'S LIMITED WARRANTY DOES NOT COVER DAMAGE TO THE RECREATIONAL VEHICLE OR THE TOW VEHICLE AS A RESULT OF THE SELECTION, OPERATION, USE OR MISUSE OF THE TOW VEHICLE. November 2008

Laredo
By Keystone
Member
RVIA
RECREATION VEHICLE
INDUSTRY ASSOCIATION



**Keystone RV
Company**

2642 Hackberry Drive, Goshen, Indiana 46526 • 574-535-2100

November 08