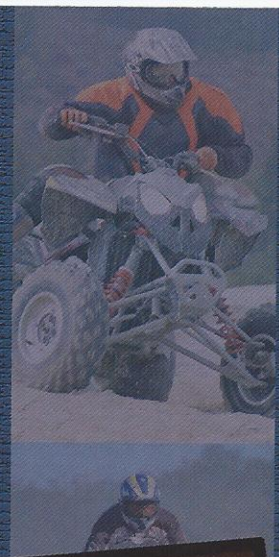
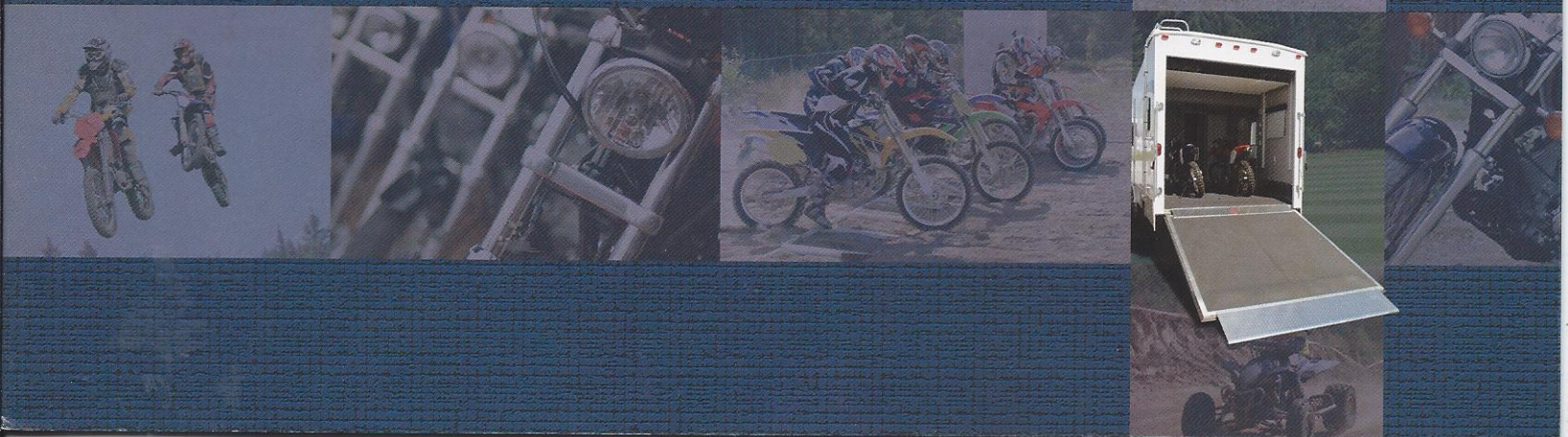




Toy  
Haulers



Helping You Get Away From it all Since 1972





# 40P/38P

These attractive Toy Haulers feature a standard queen bed loft for additional sleeping with its own area for a TV.



This is the ultimate unit for entertaining in this open concept floorplan. The bright maple interior gives it a look you won't find with your traditional toy haulers.

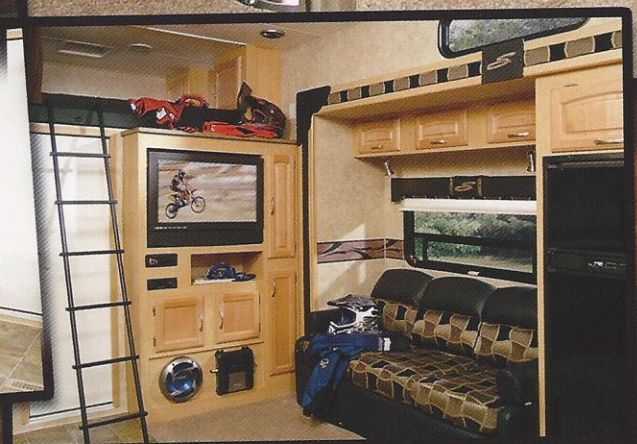


## Swivel Mount TV

The optional LCD swivels to provide optimal viewing on most models.



The side aisle bath, offered on the 40P and 38P, provides privacy for the owner and there guest.





These floorplans offer a great cross-conversational area that is inviting to you and all your guest. The spaciousness of this floorplan makes it easy to entertain.



### For Comfort

The enormous u-shaped dinette offers plenty of room for people to gather.



### For Convenience

Simply remove the table and transform the dinette into a large sleeping area.



### For Storage

Storage is a hot topic for all campers. In every Sportsmen Sportster floorplan we utilize every possible area for storage.





# 35P/33P

For those of you with size constraints, don't let it keep you away from your toy hauler search. The 35P and 33P offer you a spacious camping experience without the length. This will allow you to camp at more camp grounds across the country.



The booth dinette is roomy enough to sit four comfortably and offers the ultimate in storage.



No more messing with drawers or doors with the easy lift dinette cushions.

## Pass-Thru Service Window

These floorplans offer a pass-thru service window as an exclusive feature on the Sportsmen Sportster line. No need to have guests running in and out for beverages or food with this unique feature.



# Additional Sleeping



Optional electric beds maximize your area.

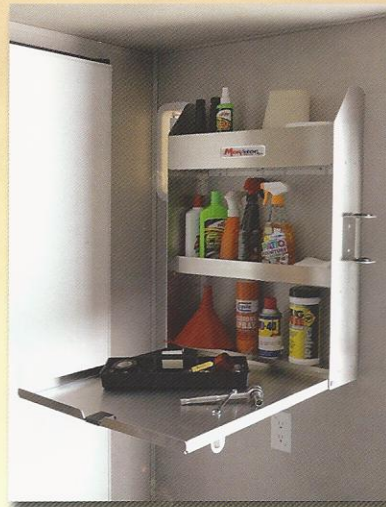


The air bed offers you more room and inflates or deflates in minutes.

# Features



The standard removable exterior ladder is convenient and durable.



The optional work station makes it easy to store all your garage necessities.



The optional pull down screen extends your living area to the garage.



D-rings are standard for securing your vehicles.



Most models offer an enormous amount of obstruction free pass-thru storage.



The standard wet storage can be used as a cooler for unwanted traffic in the unit.



The standard LP quick disconnect allows you to bring your big grill along.

## Travel Trailers

|                            | 24       | 24SB     | 25T      | 26P      |
|----------------------------|----------|----------|----------|----------|
| UVW (Unloaded Vehicle Wt.) | 5508     | 5508     | 5895     | 6310     |
| Dry Hitch Wt.              | 740      | 750      | 1080     | 1160     |
| Axles                      | 5200 (2) | 5200 (2) | 5200 (2) | 5200 (2) |
| NCC (Net Carrier Capacity) | 4892     | 4892     | 4505     | 4090     |
| GVWR                       | 10400    | 10400    | 10400    | 10400    |
| Exterior Height (w/ A/C)   | 11'3"    | 11'3"    | 11'3"    | 12'3"    |
| Exterior Length            | 26'10"   | 26'10"   | 27'8"    | 31'10"   |
| Exterior Width             | 102"     | 102"     | 102"     | 102"     |
| Fresh Water Cap. (gal.)    | 110      | 110      | 110      | 110      |
| Waste Water Cap. (gal.)    | 38       | 38       | 38       | 38       |
| Gray Water Cap. (gal.)     | 38       | 38       | 38       | 38       |
| LP Gas Cap. (lbs.)         | 60       | 60       | 60       | 60       |
| Furnace BTUs (1000's)      | 25       | 25       | 25       | 25       |
| Tire Size                  | 15"      | 15"      | 15"      | 15"      |

### Travel Trailer Mandatory Living Package (Forced Pkg)

- AM/FM/CD Player w/ 4 Speakers
- 13,500 BTU A/C (Ducted Std 26 and Up)
- Awning
- Microwave
- Cable/Satellite Prep.
- Oven
- TV Shelf in Bedroom (N/A 24)
- TV Antenna w/ Booster
- Tub Surround
- Night Shades
- Acrylic Sink w/ High-Rise Faucet
- Raised Panel Mortise and Tenon Overhead Cabinet Doors
- Deluxe Roller Drawer Guides
- Lights by Sofa
- Deluxe Globe Dinette Light
- Brushed Nickel Faucets and Cabinet Hardware
- Skylight Over Shower
- Porch Light
- Shower Door
- Hitch Light
- Smoke Detector
- LP Detector
- Chrome Rings and Caps
- Exterior Shower
- Second Entry Door (N/A 24)
- Rear Convenience Lights
- Porcelain Foot Flush Toilet
- LP Quick Disconnect
- 10 Gallon Water Heater (N/A 24 and 26P)
- Bedroom Loft (26P only)

### Travel Trailer Armor Package (Forced Pkg)

- Exterior Ladder
- Generator Prep.
- Fuel Cell w/ Pump
- Spare Tire and Hoist
- Safety Glass Windows
- Slider Windows
- Laminated Ramp Door
- 30# LP Bottles
- DS Security Light
- Garage D-Rings
- Ramp Extension/Threshold
- 110 Gallon Fresh Water Cap.
- Diamond Plate Garage Protection
- Tuff Ply on Garage Door
- Tuff Ply in Cargo (26P only)
- Tinted Windows

### Travel Trailer Bonus Package

- Sink Covers
- Stove Cover
- Posterest Mattress
- Raised Panel Refer Front
- Entry Assist Handle
- ODS Security Light
- Black Tank Flush
- Bathroom Accessories
- 8 Cubic Ft. Refer
- Fantastic Fan in Cargo
- Stabilizer Jacks

### Travel Trailer Additional Options

- Captains Chairs (IPO Sofa)
- Upgraded Stereo
- Fantastic Fan in Bedroom
- Fantastic Fan in Kitchen
- Electric Sofas (24SB only)
- Install Onan 5.5 Gas Generator
- Elec. Rear Beds Queen/Twin
- Pull Down Screen Wall
- Work Cabinet (26P only)
- Convertible Sofa/Bed (Must Opt. Electric Rear Beds)
- Tuff Ply on Floor (26P only)
- Fiberglass Exterior (24 - 26, 27 - 30) (IPO 13,500 BTU A/C)
- 15,000 BTU A/C (IPO 13,500 BTU A/C)
- Second 13,500 BTU A/C in Bedroom (N/A 24)
- Gel Coat Fiberglass
- Front Cap
- Front Power Jack
- Aluminum Wheels
- Outside Stereo w/ Speakers

## Fifth Wheels

|  | 25       | 29P      | 33P      | 35P      | 37K      | 37P      | 38P      | 40P      | 41K      |
|--|----------|----------|----------|----------|----------|----------|----------|----------|----------|
|  | 6121     | 7120     | 10350    | 10650    | 11210    | 10990    | 13250    | 13555    | 14066    |
|  | 1315     | 1680     | 2020     | 2420     | 2891     | 2891     | 2690     | 2755     | 3411     |
|  | 6000 (2) | 6000 (2) | 6000 (2) | 6000 (2) | 5200 (3) | 5200 (3) | 6000 (3) | 6000 (3) | 6000 (3) |
|  | 7279     | 6280     | 4050     | 3750     | 5790     | 6010     | 4750     | 4445     | 3934     |
|  | 13400    | 13400    | 14400    | 14400    | 17000    | 17000    | 18000    | 18000    | 18000    |
|  | 11'10"   | 11'6"    | 13'1"    | 13'1"    | 12'9"    | 12'9"    | 13'1"    | 13'1"    | 13'1"    |
|  | 26'10"   | 31'11"   | 35'3"    | 36'9"    | 39'5"    | 39'5"    | 40'5"    | 42'5"    | 42'5"    |
|  | 102"     | 102"     | 102"     | 102"     | 102"     | 102"     | 102"     | 102"     | 102"     |
|  | 55       | 110      | 110      | 110      | 110      | 110      | 220      | 110      | 110      |
|  | 38       | 38       | 38       | 38       | 50       | 50       | 50       | 550      | 50       |
|  | 38       | 38       | 38       | 38       | 50       | 50       | 50       | 50       | 50       |
|  | 60       | 60       | 60       | 60       | 60       | 60       | 60       | 60       | 60       |
|  | 25       | 25       | 30       | 30       | 30       | 30       | 30       | 30       | 30       |
|  | 16"      | 16"      | 16"      | 16"      | 15"      | 15"      | 16"      | 16"      | 16"      |

### Fifth Wheel Mandatory Living Package (Forced Pkg)

- AM/FM/CD Player w/ 4 Speakers
- 13,500 BTU A/C (Ducted Std 26 and Up)
- Awning
- Microwave
- Cable/Satellite Prep.
- Oven
- TV Shelf in Bedroom
- TV Antenna w/ Booster
- Tub Surround
- Night Shades
- Acrylic Sink w/ High-Rise Faucet
- Raised Panel Mortise and Tenon Overhead Cabinet Doors
- 10 Gallon Water Heater (N/A 29P)
- Deluxe Drawer Guides
- Deluxe Globe Dinette Light
- Brushed Nickel Lights by Sofa
- Brushed Nickel Faucets and Cabinet Hardware
- Skylight Over Shower
- Porch Light
- Shower Door
- Hitch Light
- Smoke Detector
- LP Detector
- Chrome Rings and Caps
- Rear Convenience Lights
- Exterior Shower
- Second Entry Door (N/A 25)
- Porcelain Foot Flush Toilet
- LP Quick Disconnect

### Fifth Wheel Armor Package (Forced Pkg)

- Exterior Ladder
- Generator Prep.
- Fuel Cell w/ Pump
- Spare Tire and Hoist
- Safety Glass Windows
- Slider Windows
- Laminated Ramp Door
- 30# LP Bottles
- DS Security Light
- Garage D-Rings
- Ramp Extension/Threshold
- 110 Gallon Fresh Water Cap. (N/A 25)
- Diamond Plate Garage Protection
- Tuff Ply on Garage Floor and Door (Door only on 25)
- Tinted Windows
- 50 Amp Service
- Heated and Enclosed Underbelly

### Fifth Wheel Bonus Package

- Sink Covers
- Stove Cover
- Posterest Mattress
- Raised Panel Refer Front
- Entry Assist Handle
- ODS Security Light
- Black Tank Flush
- Bathroom Accessories
- Fantastic Fan in Cargo

### Fifth Wheel Additional Options

- Table and 4 Chairs (N/A 38P and 40P)
- Upgraded Stereo
- Patio Door (37K and 41K only)
- Fantastic Fan in Bedroom
- Fantastic Fan in Kitchen
- Captains Chairs (IPO Sofa 25 only)
- LCD TV (26" Most Models, 32" 40P and 38P)
- Install Onan 5.5 Gas Generator
- Elec. Rear Beds Queen/Twin (N/A 25)
- Pull Down Screen Wall
- Adjustable Work Lights (N/A w/ Beds)
- Work Cabinet
- Convertible Sofa/Bed (Must Opt. Electric Rear Beds)
- Fiberglass Exterior (24 - 26, 27-35)
- 15,000 BTU A/C (IPO 13,500 BTU A/C)
- Second 13,500 BTU A/C in Bedroom
- Gel Coat
- Front Cap
- Riser Kit (N/A 33P and 35P)
- Aluminum Wheels (25 - 35 x4, 37 - 41 x6)
- Outside Stereo w/ Speakers

## Sand Trail



## Shadow



## Raven

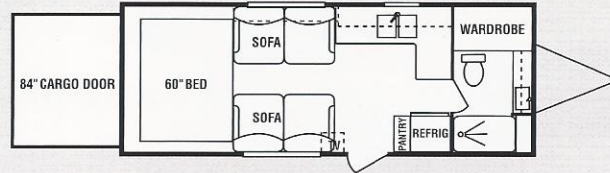




# Floorplans & Specs

## 24

| Travel Trailer             |        |
|----------------------------|--------|
| UVW (Unloaded Vehicle Wt.) | 5508   |
| Dry Hitch Wt.              | 740    |
| NCC (Net Carrier Capacity) | 4892   |
| Exterior Length            | 26'10" |



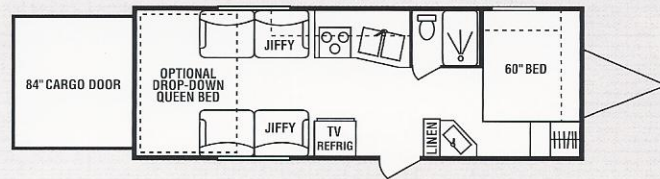
## 24SB

| Travel Trailer             |        |
|----------------------------|--------|
| UVW (Unloaded Vehicle Wt.) | 5508   |
| Dry Hitch Wt.              | 750    |
| NCC (Net Carrier Capacity) | 4892   |
| Exterior Length            | 26'10" |



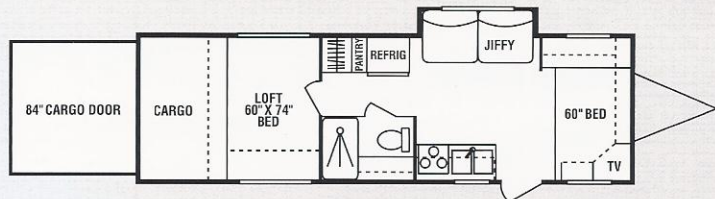
## 25T

| Travel Trailer             |       |
|----------------------------|-------|
| UVW (Unloaded Vehicle Wt.) | 5895  |
| Dry Hitch Wt.              | 1080  |
| NCC (Net Carrier Capacity) | 4505  |
| Exterior Length            | 27'8" |



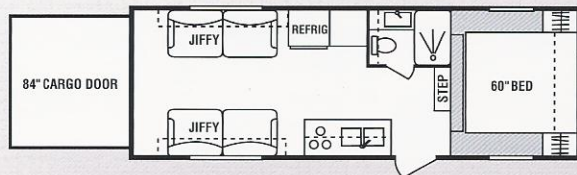
## 26P

| Travel Trailer             |        |
|----------------------------|--------|
| UVW (Unloaded Vehicle Wt.) | 6310   |
| Dry Hitch Wt.              | 1160   |
| NCC (Net Carrier Capacity) | 4090   |
| Exterior Length            | 31'10" |



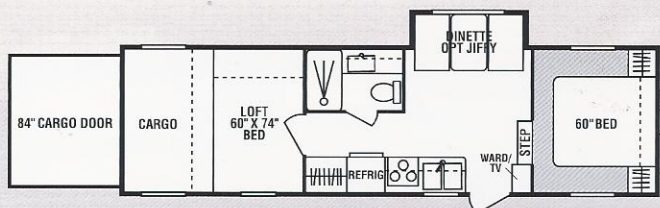
## 25

| Fifth Wheel                |        |
|----------------------------|--------|
| UVW (Unloaded Vehicle Wt.) | 6121   |
| Dry Hitch Wt.              | 1315   |
| NCC (Net Carrier Capacity) | 7279   |
| Exterior Length            | 26'10" |



## 29P

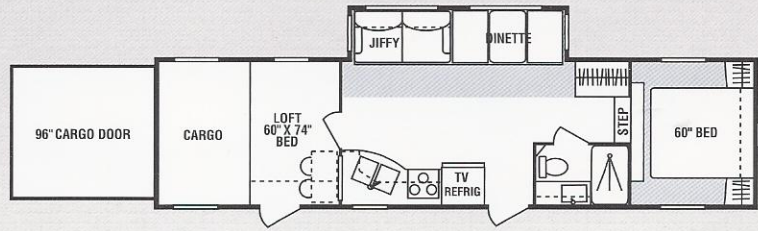
| Fifth Wheel                |        |
|----------------------------|--------|
| UVW (Unloaded Vehicle Wt.) | 7120   |
| Dry Hitch Wt.              | 1680   |
| NCC (Net Carrier Capacity) | 6280   |
| Exterior Length            | 31'11" |



# 33P

## Fifth Wheel

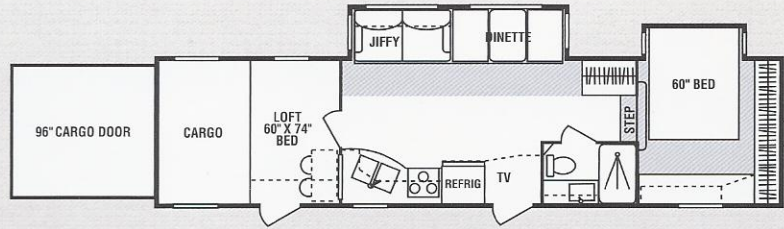
|                            |       |
|----------------------------|-------|
| UVW (Unloaded Vehicle Wt.) | 10350 |
| Dry Hitch Wt.              | 2020  |
| NCC (Net Carrier Capacity) | 4050  |
| Exterior Length            | 35'3" |



# 35P

## Fifth Wheel

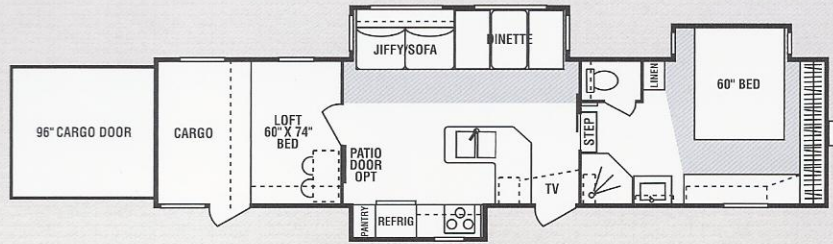
|                            |       |
|----------------------------|-------|
| UVW (Unloaded Vehicle Wt.) | 10650 |
| Dry Hitch Wt.              | 2420  |
| NCC (Net Carrier Capacity) | 3750  |
| Exterior Length            | 36'9" |



# 37K

## Fifth Wheel

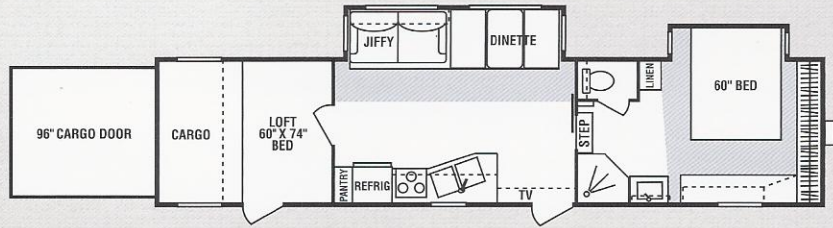
|                            |       |
|----------------------------|-------|
| UVW (Unloaded Vehicle Wt.) | 11210 |
| Dry Hitch Wt.              | 2891  |
| NCC (Net Carrier Capacity) | 5790  |
| Exterior Length            | 39'5" |



# 37P

## Fifth Wheel

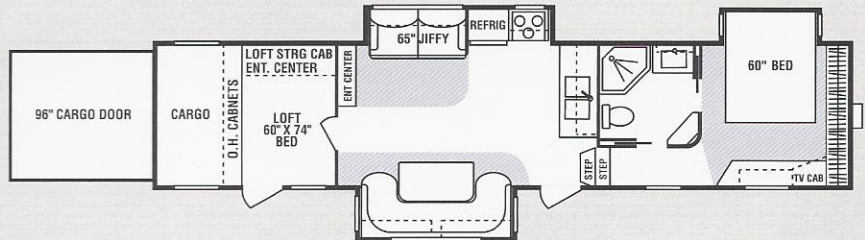
|                            |       |
|----------------------------|-------|
| UVW (Unloaded Vehicle Wt.) | 10990 |
| Dry Hitch Wt.              | 2891  |
| NCC (Net Carrier Capacity) | 6010  |
| Exterior Length            | 39'5" |



# 38P

## Fifth Wheel

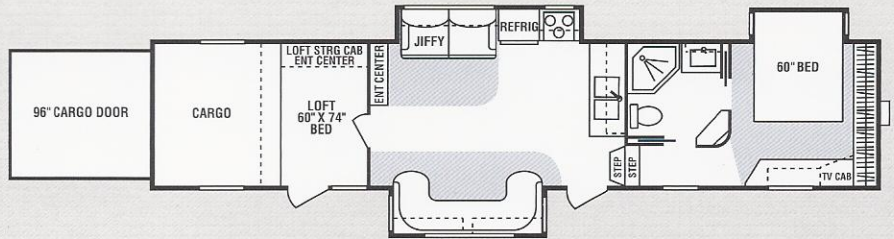
|                            |       |
|----------------------------|-------|
| UVW (Unloaded Vehicle Wt.) | 13250 |
| Dry Hitch Wt.              | 2690  |
| NCC (Net Carrier Capacity) | 4750  |
| Exterior Length            | 40'5" |



# 40P

## Fifth Wheel

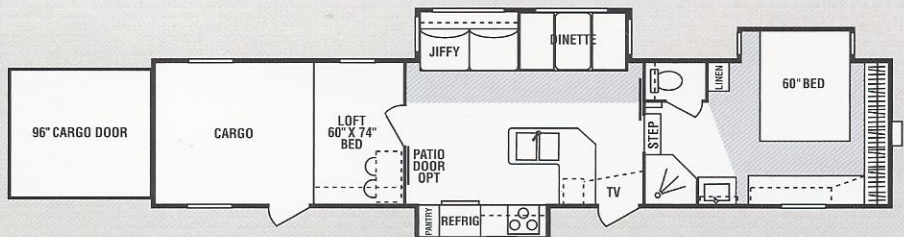
|                            |       |
|----------------------------|-------|
| UVW (Unloaded Vehicle Wt.) | 13555 |
| Dry Hitch Wt.              | 2755  |
| NCC (Net Carrier Capacity) | 4445  |
| Exterior Length            | 42'5" |



# 41K

## Fifth Wheel

|                            |       |
|----------------------------|-------|
| UVW (Unloaded Vehicle Wt.) | 14066 |
| Dry Hitch Wt.              | 3411  |
| NCC (Net Carrier Capacity) | 3934  |
| Exterior Length            | 42'5" |



*An innovative leader in RV design and development, K-Z's desire is to engineer affordable, high-value products that deliver customer satisfaction year after year.*

*See for yourself why K-Z has been awarded the Dealer Satisfaction Index six years in a row.*



**2X2 WARRANTY** – The K-Z 2x2 Warranty is a manufacturer's warranty. Each K-Z product is warrantied to the original purchaser for twenty-four (24) months from the original date of purchase. Coverage includes appliances, components, construction and FULL structure. Our warranty is also transferable within the first two (2) years for a small processing fee. For a copy of the warranty with full terms and conditions, ask your local K-Z Dealer or visit our web site at <http://www.kz-rv.com>.

**VEHICLE LOADING** – Every effort has been made to provide the greatest number of options for the recreational owner. Each owner is responsible to select loads allowing the recreational vehicle to remain within the manufacturer's specified chassis weight limits. Do not overload the recreational vehicle.

**UNLOADED VEHICLE WEIGHT (UVW)** – The typical weight of this trailer as built at the factory. The UVW does not include cargo, LP gas, fresh water, options or dealer-installed accessories.

**GROSS VEHICLE WEIGHT RATING (GVWR)** – The maximum permissible weight of the trailer, including the UVW plus passengers, all cargo, personal items, fluids, options and dealer-installed accessories. The GVRW is equal to or greater than the sum of the UVW and the NCC.

**NET CARRYING CAPACITY (NCC)** – The maximum weight of all passengers, personal items, fresh water, food, tools, LP gas, other cargo and dealer-installed accessories\* that can be carried by the trailer. NCC is equal to or less than GVWR minus UVW.

\* The addition of options will decrease the NCC.

It is important for your safety and enjoyment that your tow vehicle be adequately sized and equipped to tow and handle the GVWR of the RV you select. Review weights and rating of your tow vehicle and consult a competent advisor for questions or advice. Whether you are new to RVing or a seasoned veteran, get a feel for the performance of your tow vehicle and the RV together before heading out on the roadways. When you tow an RV, you must drive differently than you do when driving a single vehicle. Practice hooking up, driving, backing up and braking in a safe environment or seek out professional instruction.

See specification chart above. K-Z affixes a weight label to each new RV which lists weight information for that vehicle.

*NOTE: This information is intended as a guide only. Weights of individual vehicles are approximate. Consult your Owner's Manual for complete loading, weighing and towing instructions. All weights may vary.*



K-Z • 0985 N 900 W • Shipshewana, IN 46565  
E-Mail [kz@kz-rv.com](mailto:kz@kz-rv.com) • [www.kz-rv.com](http://www.kz-rv.com)

Dealer:

Jerry's Trailers & Campers, Inc.  
2601 South 13th St.  
Norfolk, NE 68701  
(402) 371-1306  
[www.jerrystrailers.com](http://www.jerrystrailers.com)

Due to continual research and advances, manufacturer reserves the right to change specifications, design, price and equipment without notice, and assumes no responsibility for any error in this literature. Some items shown are not included as standard or optional equipment.  
©2007K-Z

**RVIA**