



Made for those who have...  
high expectations.



# It's time to move up to the



What an exciting feeling to load up and hit the road for new destinations. The anticipation of unknown adventures turns the corner of your mouth upward into an undeniable smile as you hook up to your Open Road™.

Even though your upcoming adventures are still a mystery, you know the comfort and style of your Open Road is as familiar as the comforts of home.

Open Road has some new features that you'll find liberating as well. You now have the option to choose a model with Maple or Cherry cabinetry and trim. Built with the same attention to detail and craftsmanship, these two beautiful wood selections will make a major statement with your choice of décor. This is just another reason why Open Road is the choice of buyers with high expectations.

2 | *Open Road*

Model 358RL4S-5 Shown with Maple wood.





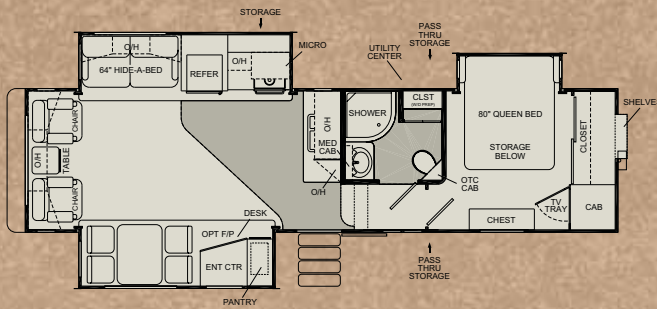
Model 378SA4S-5 Shown with Cherry wood.

3 | *Open Road*

Beauty and function come together in the perfect duet for the 378SA4S-5 kitchen. The rounded counter tops and cabinet ends will have your guests green with envy. A built-in appliance center keeps your toaster, blender or other counter top appliances out of sight until you need them.

Detailed real wood cabinet doors and genuine Corian® counter tops compliment our meticulous craftsmanship. A slide-out in the kitchen maximizes space and makes a convenient nook for the stove, microwave and refrigerator.

# 305RL3S-5



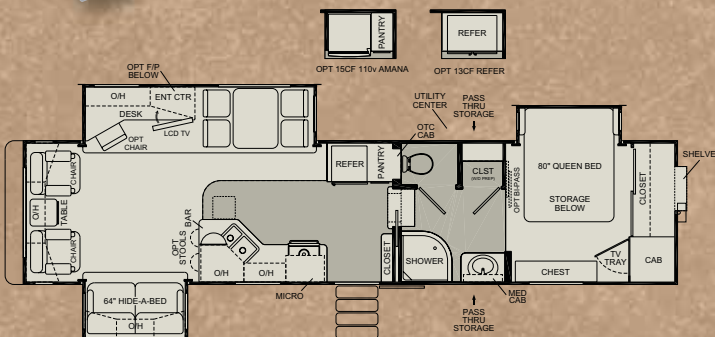
## Specifications

Total Dry Weight (UVW)	*10680
Dry Hitch Weight (lbs)	*2130
GVWR	*13490
Fresh Water Capacity (gal)	63
Grey Water Capacity (gal)	82
Black Water Capacity (gal)	41
LP Capacity (lbs)	60
Cargo Carrying Capacity	*2810
Overall Length	34'1
Height	12'11
Width	8'1
Tires	235/85 R16 (E)
Awning Length	16'

\* = Approximated Weights

4 | Open Road

# 357RL3S-5



## Specifications

Total Dry Weight (UVW)	*11345
Dry Hitch Weight (lbs)	*2220
GVWR	*14290
Fresh Water Capacity (gal)	63
Grey Water Capacity (gal)	82
Black Water Capacity (gal)	41
LP Capacity (lbs)	60
Cargo Carrying Capacity	*2945
Overall Length	37'5
Height	12'11
Width	8'1
Tires	235/85 R16 (G)
Awning Length	18'

\* = Approximated Weights



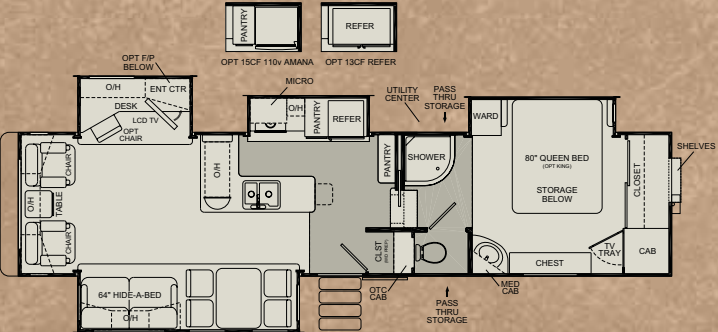
Model 358RL4S-5 Slide-out bedroom with Queen size bed. Shown with Maple wood.

# 358RL4S-5



## Specifications

Total Dry Weight (UVW)	12045
Dry Hitch Weight (lbs)	2560
GVWR	15560
Fresh Water Capacity (gal)	63
Grey Water Capacity (gal)	82
Black Water Capacity (gal)	41
LP Capacity (lbs)	60
Cargo Carrying Capacity	3515
Overall Length	37'10"
Height	12'11"
Width	8'1"
Tires	235/85 R16 (G)
Awning Length	18'



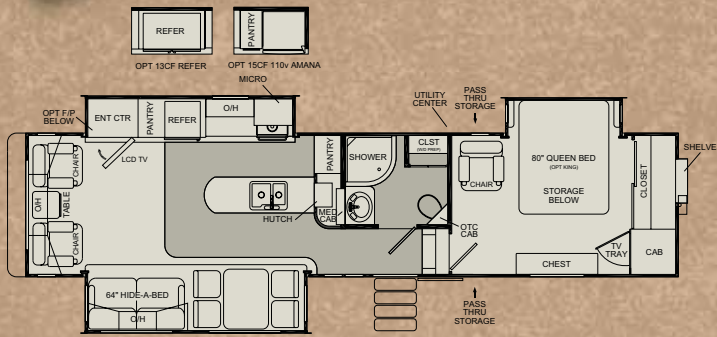
# 363RL3S-5



Model 358RL4S-5 Kitchen with Maple wood

## Specifications

Total Dry Weight (UVW)	11750
Dry Hitch Weight (lbs)	2040
GVWR	15230
Fresh Water Capacity (gal)	63
Grey Water Capacity (gal)	82
Black Water Capacity (gal)	41
LP Capacity (lbs)	60
Cargo Carrying Capacity	3480
Overall Length	37'10
Height	12'11
Width	8'1
Tires	235/85 R16 (G)
Awning Length	16'

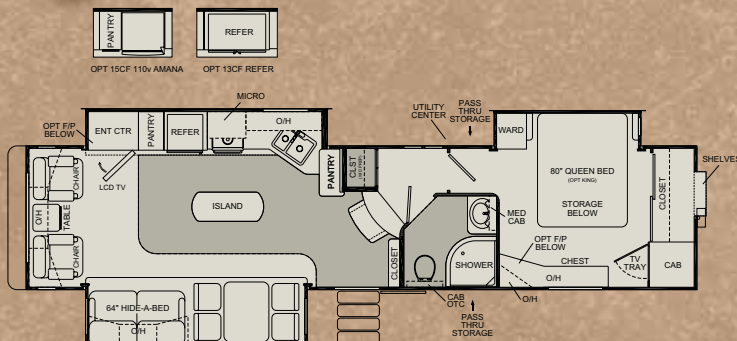


# 366SA3S-5

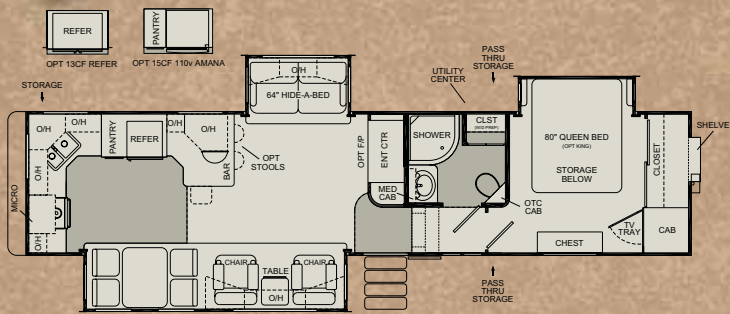
## Specifications

Total Dry Weight (UVW)	*11960
Dry Hitch Weight (lbs)	*2400
GVWR	*15200
Fresh Water Capacity (gal)	63
Grey Water Capacity (gal)	82
Black Water Capacity (gal)	41
LP Capacity (lbs)	60
Cargo Carrying Capacity	*3240
Overall Length	38'9
Height	12'11
Width	8'1
Tires	235/85 R16 (G)
Awning Length	18'

\* = Approximated Weights



# 375RK3S-5



Model 378SA4S-5 Cherry entertainment center

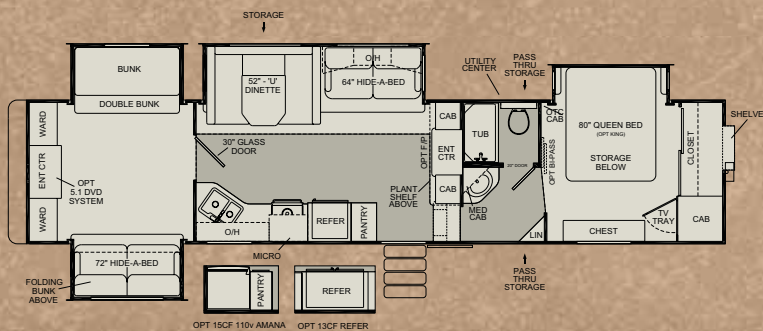
## Specifications

Total Dry Weight (UVW)	*11910
Dry Hitch Weight (lbs)	*2400
GVWR	*15130
Fresh Water Capacity (gal)	63
Grey Water Capacity (gal)	82
Black Water Capacity (gal)	41
LP Capacity (lbs)	60
Cargo Carrying Capacity	*3220
Overall Length	38'7
Height	12'11
Width	8'1
Tires	235/85 R16 (G)
Awning Length	16'

\* = Approximated Weights

7 | Open Road

# 377QB4S-5



## Specifications

Total Dry Weight (UVW)	*12190
Dry Hitch Weight (lbs)	*2390
GVWR	*15460
Fresh Water Capacity (gal)	63
Grey Water Capacity (gal)	82
Black Water Capacity (gal)	41
LP Capacity (lbs)	60
Cargo Carrying Capacity	*3270
Overall Length	39'10
Height	12'11
Width	8'1
Tires	235/85 R16 (G)
Awning Length	20'

\* = Approximated Weights

# 378SA4S-5

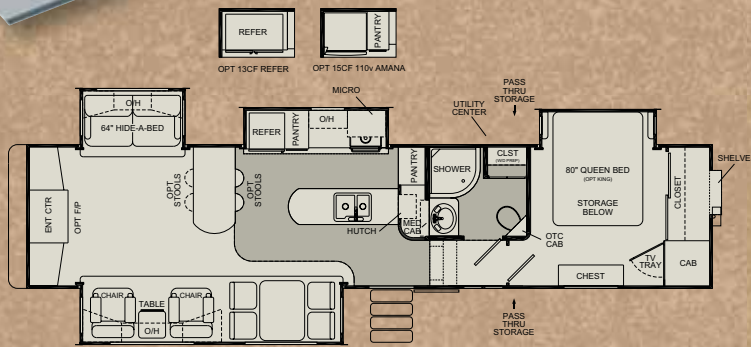


Model 378SA4S-5 Slide-out with optional recliners

## Specifications

Total Dry Weight (UVW)	*12200
Dry Hitch Weight (lbs)	*2180
GVWR	*15600
Fresh Water Capacity (gal)	63
Grey Water Capacity (gal)	82
Black Water Capacity (gal)	41
LP Capacity (lbs)	60
Cargo Carrying Capacity	*3400
Overall Length	39'5
Height	12'11
Width	8'1
Tires	235/85 R16 (G)
Awning Length	18'

\* = Approximated Weights



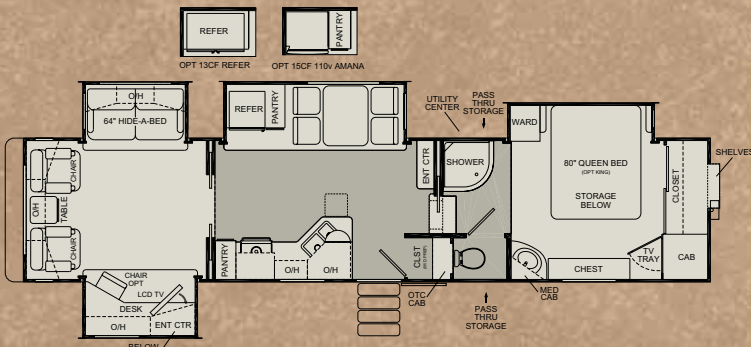
# 379RL4S-5



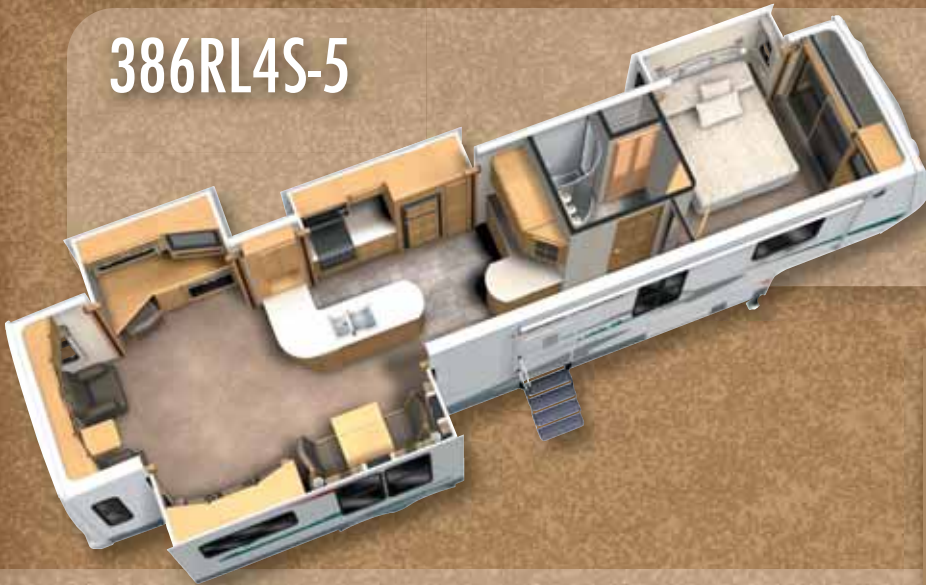
## Specifications

Total Dry Weight (UVW)	*12380
Dry Hitch Weight (lbs)	*2490
GVWR	*15680
Fresh Water Capacity (gal)	63
Grey Water Capacity (gal)	82
Black Water Capacity (gal)	41
LP Capacity (lbs)	60
Cargo Carrying Capacity	*3300
Overall Length	40'0
Height	12'11
Width	8'1
Tires	235/85 R16 (G)
Awning Length	18'

\* = Approximated Weights



# 386RL4S-5

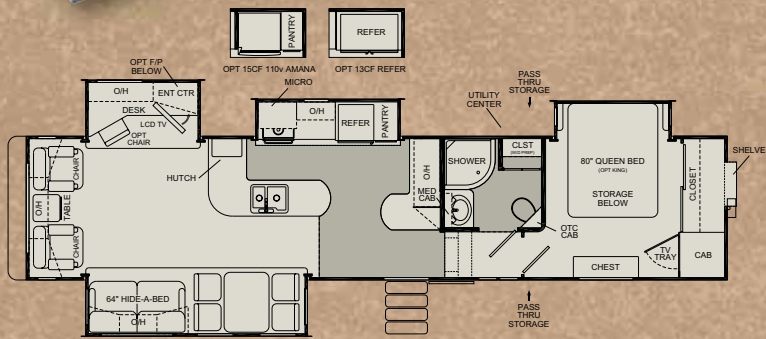


Model 358RL4S-5 Desk & optional fire place

## Specifications

Total Dry Weight (UVW)	*12305
Dry Hitch Weight (lbs)	*2460
GVWR	*15800
Fresh Water Capacity (gal)	63
Grey Water Capacity (gal)	82
Black Water Capacity (gal)	41
LP Capacity (lbs)	60
Cargo Carrying Capacity	*3495
Overall Length	39'6
Height	12'11
Width	8'1
Tires	235/85 R16 (G)
Awning Length	18'

\* = Approximated Weights



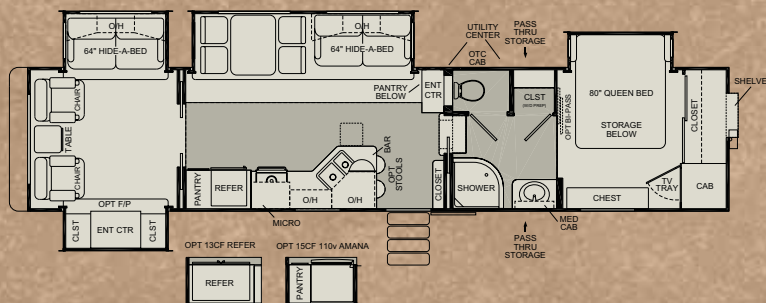
# 396RD4S-5



## Specifications

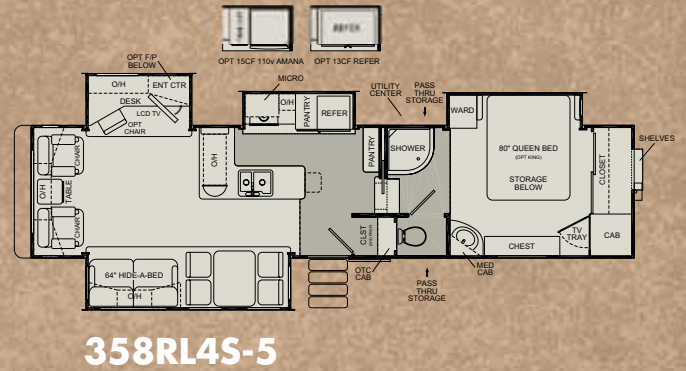
Total Dry Weight (UVW)	*12700
Dry Hitch Weight (lbs)	*2560
GVWR	*15990
Fresh Water Capacity (gal)	63
Grey Water Capacity (gal)	82
Black Water Capacity (gal)	41
LP Capacity (lbs)	60
Cargo Carrying Capacity	*3290
Overall Length	40'3
Height	12'11
Width	8'1
Tires	235/85 R16 (E)
Awning Length	16'

\* = Approximated Weights

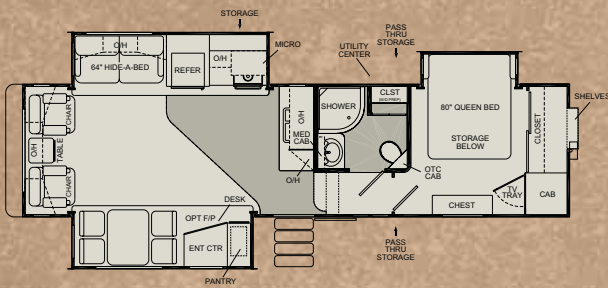




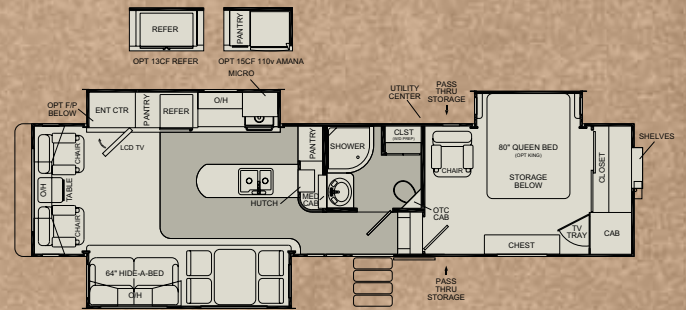
# Open Road Floor Plans



**358RL4S-5**

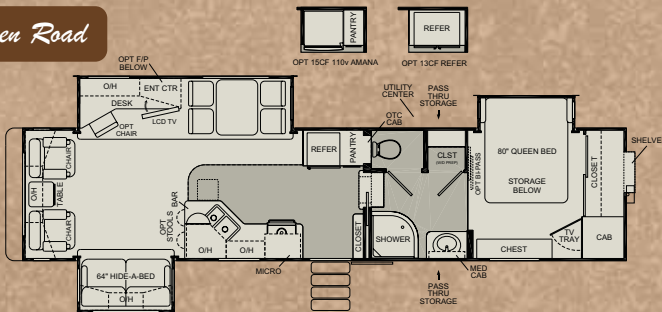


**305RL3S-5**

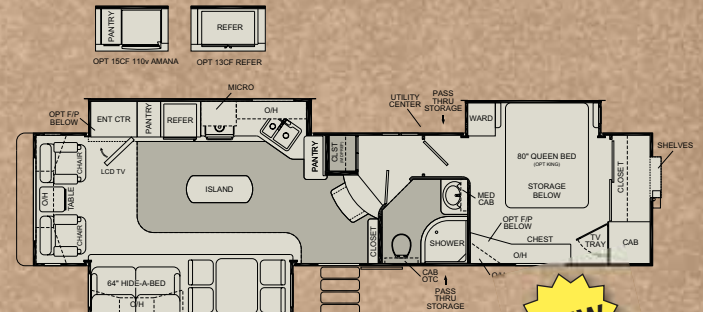


**363RL3S-5**

10 | *Open Road*



**357RL3S-5**

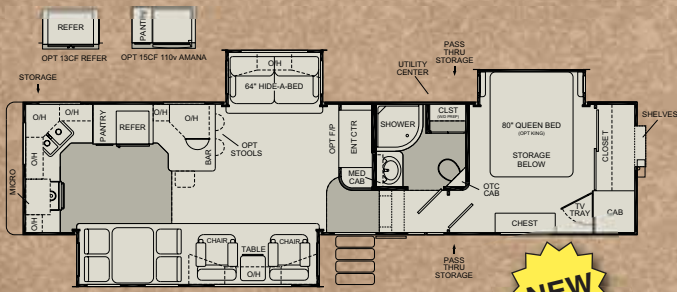


**366SA3S-5**

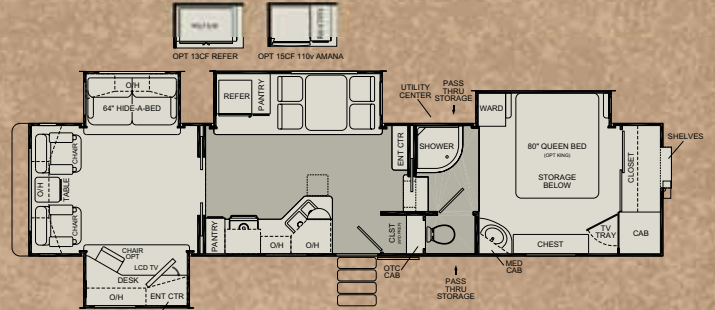


## Specifications

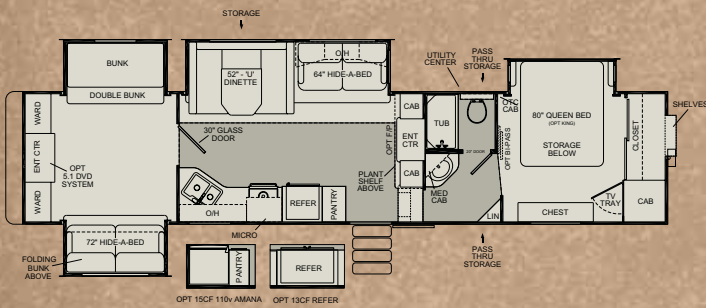
	<b>305RL3S-5</b>	<b>357RL3S-5</b>	<b>358RL4S-5</b>	<b>363RL3S-5</b>	<b>366SA3S-5</b>
Total Dry Weight (UVW)	*10680	*11345	12054	11750	*11960
Dry Hitch Weight (lbs)	*2130	*2220	2560	2040	*2400
GVWR	*13490	*14290	15560	15230	*15200
Fresh Water Capacity (gal)	63	63	63	63	63
Grey Water Capacity (gal)	82	82	82	82	82
Black Water Capacity (gal)	41	41	41	41	41
LP Capacity (lbs)	60	60	60	60	60
Cargo Carrying Capacity	*2810	*2945	3515	3480	*3240
Overall Length	34'1	37'5	37'10	37'10	38'9
Height	12'11	12'11	12'11	12'11	12'11
Width	8'1	8'1	8'1	8'1	8'1
Tires	235/85 R16 (E)	235/85 R16 (G)	235/85 R16 (G)	235/85 R16 (G)	235/85 R16 (G)
Awning Length	16'	18'	18'	16'	18'



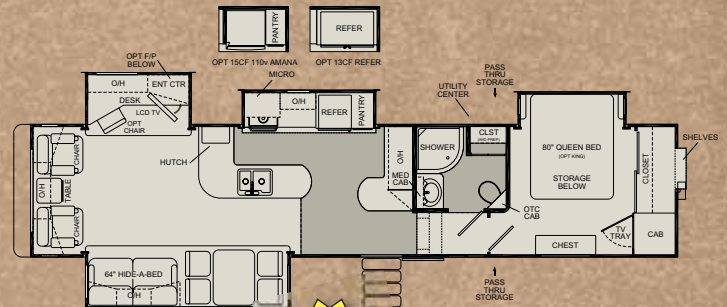
**375RK3S-5**



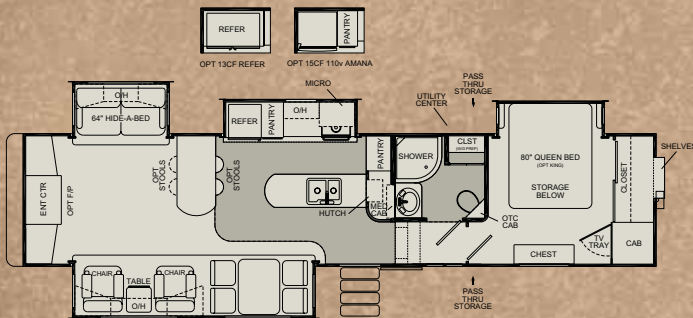
**379RL4S-5**



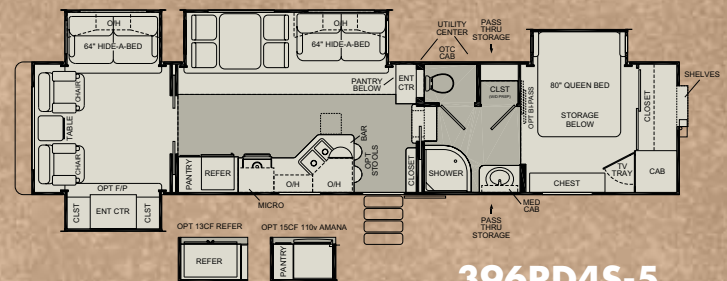
**377QB4S-5**



**386RL4S-5**



**378SA4S-5**



**396RD4S-5**

**375RK3S-5   377QB4S-5   378SA4S-5   379RL4S-5   386RL4S-5   396RD4S-5**

*11910	*12190	*12200	*12380	*12305	*12700
*2400	*2390	*2180	*2490	*2460	*2560
*15130	*15460	*15600	*15680	*15800	*15990
63	63	63	63	63	63
82	82	82	82	82	82
41	41	41	41	41	41
60	60	60	60	60	60
*3220	*3270	*3400	*3300	*3495	*3290
38'7	39'10	39'5	40'0	39'6	40'3
12'11	12'11	12'11	12'11	12'11	12'11
8'1	8'1	8'1	8'1	8'1	8'1
235/85 R16 (G)	235/85 R16 (G)	235/85 R16 (G)	235/85 R16 (G)	235/85 R16 (G)	235/85 R16 (E)
16'	20'	18'	18'	18'	16'

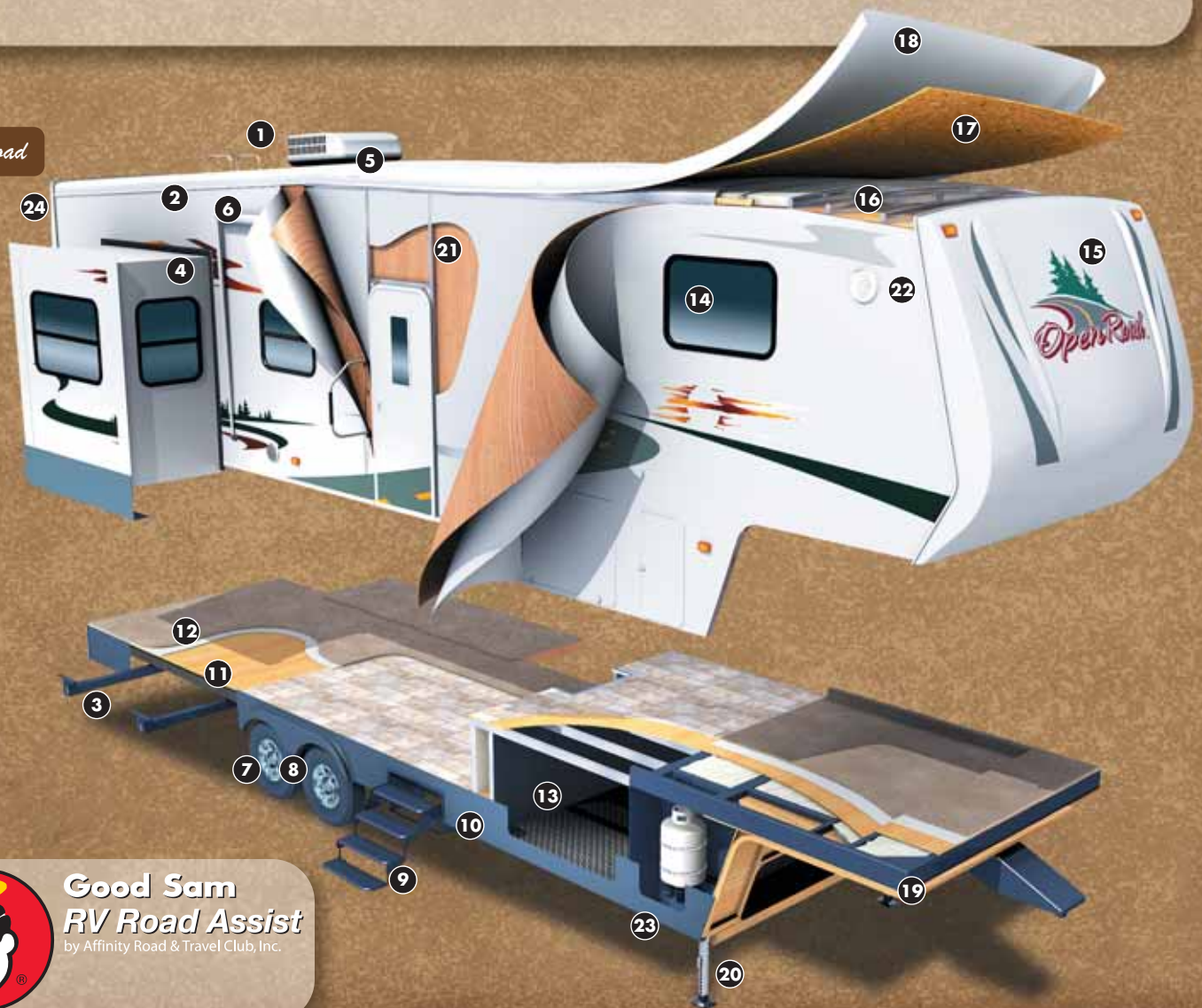
\* = Approximated Weights

# Layers of quality

for years of dependability

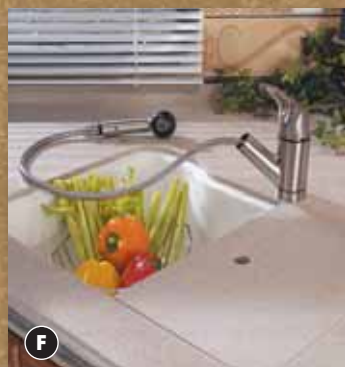
1. Rear ladder
2. High gloss gelcoat fiberglass exterior
3. Electric rack and pinion slide-out systems (independent switches)
4. Dual bulb slide seal system
5. Pre-framed and wired for optional bedroom A/C
6. A&E™ patio awning with 4-ply fabric (convenience group package)
7. Super Lube Hubs & radial tires
8. Shock absorbers
9. Four step entry
10. Crystal coated lower trim
11. Exterior grade Plum Creek™ Plywood
12. Residential grade carpet with 1/2" rebond pad
13. Drop frame chassis design allows for huge pass-through storage
14. Tinted windows
15. Aerodynamic front cap (fiberglass)
16. Welded aluminum roof trusses 16" on center with full R-14 batt insulation
17. Full walk on roof with 3/8" Weyerhaeuser™ decking
18. EPDM rubber roof - Dicor™ System with 12 year warranty
19. 10" - 12" powder coated drop frame chassis
20. Wide stance, easy to access landing gear with EZ pull pin
21. Double welded aluminum framed vacuum bonded sidewalls
22. Door side scare light
23. Fully enclosed insulated (Astrofoil) heated underbelly with moisture barrier
24. Rear fiberglass cap
25. One (1) Year Good Sam roadside assistance (365 - 24/7)
26. Full One (1) Year Platinum warranty from Pilgrim International™

12 | *Open Road*



**Good Sam**  
**RV Road Assist**  
by Affinity Road & Travel Club, Inc.

# Interior and exterior features that set Open Road apart from the competition!



13 | Open Road



- A** Radius shower with sliding glass enclosure & sky light
- B** China bowl toilet with foot flush
- C** Smooth touch ceiling with recessed lighting throughout
- D** Real wood drawers in pantry with full extend ball bearing guides
- E** Sofa with air bed and hand held control
- F** Single lever faucet with retractable sprayer, undermount sink and Corian counter tops
- G** Real wood drawers with full extend ball bearing guides
- H** 50 AMP detachable marine power cord and conveniently stored sewer hose
- I** Large exterior pass-thru storage
- J** Central docking station convenient hookup for satellite, cable, phone, water and holding tank controls



Model 358RL4S-5 Slide-out with free standing table and chairs. Shown in Hopewell Spice Décor.

14 | *Open Road*

*Designer* Décor Packages and Woods



*Vintage Floral* Décor Package



*Uptown Onyx* Décor Package



*Hopewell Spice* Décor Package



*Cypress Sage* Décor Package



*Maple* Wood



*Cherry* Wood

# Standards & Options

## Standard Features

- Electric front jacks with E-Z pull snap pins
- Extra wide stance landing gear legs
- Easy four step entry
- Rear ladder
- Lazy susan (on most models)
- Raised six panel passage doors
- Extra large dinette picture window
- 12 volt residential style wall lights with shades
- Real plywood drawers with full extend ball bearing drawer guides
- Congoleum flooring throughout kitchen, bath and entryway
- Raised hardwood cabinet uppers with cathedral tops
- Raised oak refer front
- Single lever faucet with retractable sprayer
- Large full extend pots and pans drawer (most models)
- Dual Corian sink covers
- Removable pantry drawers
- Radius shower with glass enclosure and sky light
- Under bed storage & lock box
- TV jack and booster
- Swing out TV cabinet with travel lock
- Innerspring mattress
- Built in jewelry box with mirror
- Built in shoe storage in front closet
- 35,000 BTU furnace
- 63 gallon fresh water system
- Ceiling fan with 110 volt light in living area
- 50 AMP detachable marine power cord
- Washer & dryer prep (N/A 377)
- Dual 30 lb. LP tanks with auto change over
- Central docking station
- 70 AMP Charge Wizard converter
- Phone, cable, satellite hook-ups

## Customer Convenience Group (required)

- Digital probeless monitor system
- Outside shower
- Patio awning
- 3 burner, high output range (21" oven) with auto ignite
- Folding range cover
- AM, FM, CD, DVD, MP3 player with 5:1 surround sound
- 13,500 BTU ducted A/C
- 8 cubic foot double door refrigerator with wood front
- In floor ducted heat
- 10 gallon (gas/elec) water heater with DSI
- China bowl toilet with foot flush
- Day/night shades
- Fluorescent lighting in kitchen
- Bedroom dresser lamp
- Fantastic fan in bedroom
- Wire & frame for bedroom air conditioner

- Power vent in bath
- Color TV in living area (with remote)
- Enclosed insulated heated underbelly

## Open Road Package (required)

- 100% true Corian (kitchen counter tops)
- Extra insulation in floor & roof
- Spare tire & carrier
- Fantastic vent bedroom
- Universal docking station
- Microwave oven with turntable
- Upgraded carpet
- High gloss gel coat exterior finish
- Outside speakers

## Optional Equipment

- 11K BTU bedroom AC
- 15K BTU AC upgrade
- Alloy wheels 16" F.W. and TRI Axle 16"
- Canadian Standards
- Central vacuum
- Dual pane windows
- Equa-Flex suspension by Trail-Air
- Fire place
- Additional fantastic vent fan with switch
- Half time convection microwave
- Heat pads fresh water and waste tanks
- 16 (gal) extended gas/electric water heater with DSI
- SBS 13 CF refrigerator (icemaker available in 357, 375, 377, 396) (13 CF N/A in 305)
- 15 CF residential refrigerator with 800 watt inverter
- Power stabilizer jacks (rear)
- Slide toppers
- Sliding by-pass door bedroom to bath (357, 377, 396 only)
- High gloss gelcoat fiberglass
- 26" flat panel LCD living area (upgrade)
- 15" LCD TV with DVD bedroom
- A&E deluxe power awning
- Cherry wood interior with wood window blinds
- Day/night shades cherry interior IPO wood blinds
- Generator prep

## Optional Furniture

- King size bed (N/A 305, 357, 396)
- Desk chair (on some models)
- Free standing dinette with 4 chairs
- Madras leather recliners & sofa
- Recliners instead of swivels (on most models)
- Bar stools (on most models)



Proud Sponsor of  
*Go RVing.*



Pilgrim International, Inc.  
14489 U.S. 20 • Middlebury, IN 46540  
Phone: 574-825-8686 Fax: 574-825-2854  
[www.pilgrimintl.com](http://www.pilgrimintl.com)

YOUR LOCAL DEALER