

Gulf Breeze

By Gulf Stream

QUALITY, VALUE & INNOVATION SINCE 1983



Gulf Breeze
By Gulf Stream



*fine
engineering*

Gulf Breeze was created with your family in mind. Utilizing the finest engineering and highest quality construction, Gulf Breeze is a standard-bearer of Gulf Stream's dedication to exceeding your discerning expectations.

*quality
construction*

With Gulf Breeze you know you will get the safest, feature-packed recreational vehicle available at an unmatched price.

*family
oriented*

Now that we've peaked your interest, it's on to those discerning expectations...

*more
features*

*best
prices*





All of our floor plans offer excellent room, comfort and quality with an upscale top-of-the-line look. In doing this, our floor plans offer excellent viewing of the entertainment center, with seating for everyone. Yes, you really can enjoy a spacious, luxurious interior in an economically priced ultra light-weight trailer!



This is what Gulf Breeze brings you. We have custom designed our trailers for the luxurious look and feel you expect when owning a Gulf Breeze. Quality craftsmanship, and attention to detail have been put into our trailers, all with you in mind. Take a look for yourself and see why we are proud to call ourselves Gulf Stream.

quality

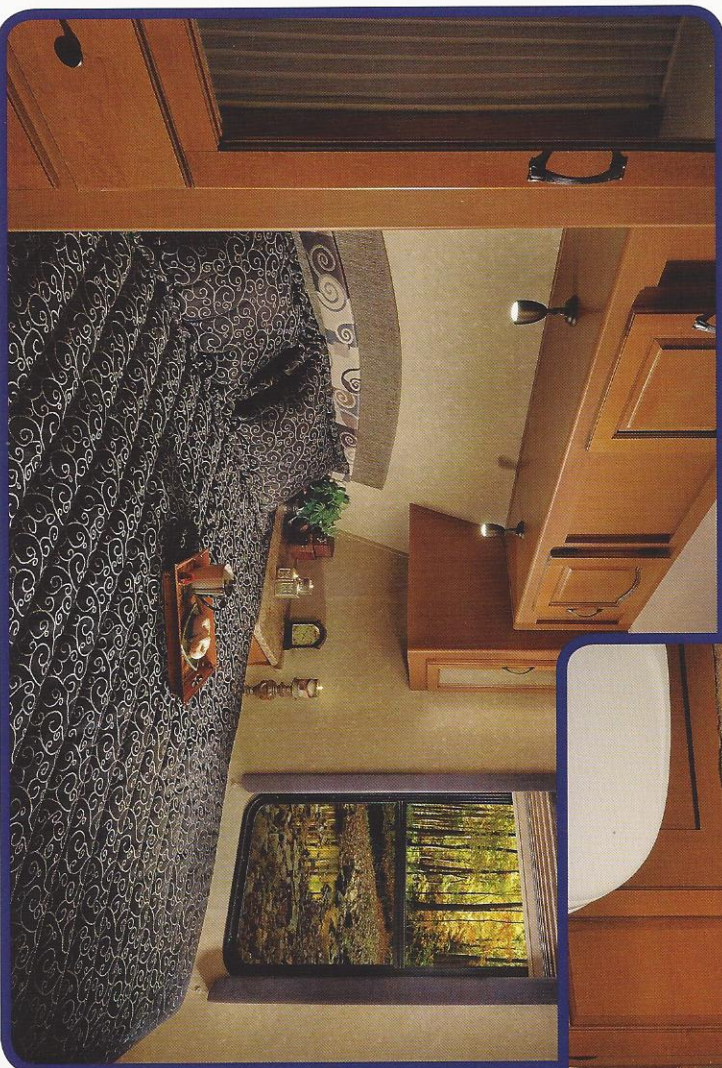
Luxury features like our slide room fascia amplify our value giving you a luxury look at an everyday price.

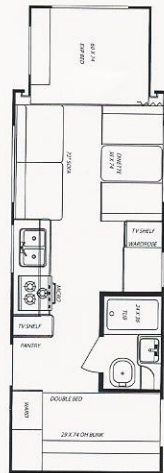
innovation

With our spacious residential style bathrooms, you will feel right at home. Real size bathrooms for real size people.

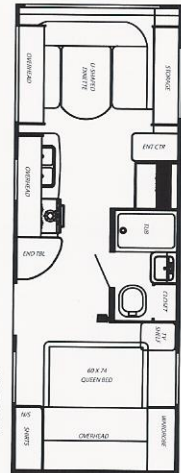
value

The bedroom in the Gulf Breeze is both roomy and functional. The large overhead storage includes matching shirt closets and a night stand with a conveniently placed 110V outlet complete with oil rubbed bronze hardware and fully adjustable bullet lighting.

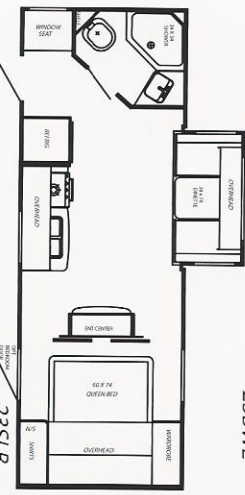




237RS



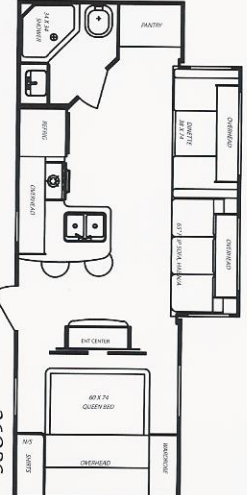
238WL



235LB



25FBH



26QBS



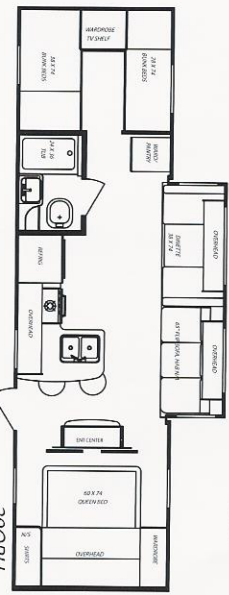
26RKS



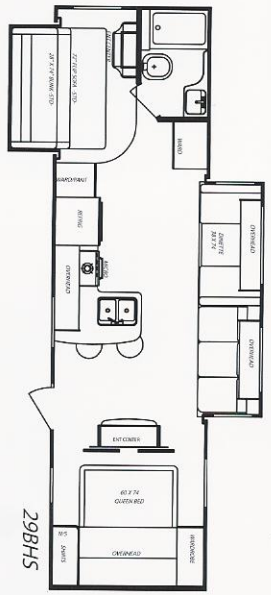
27BHS



28RLS



29QBH



29BHS



30FKR

Gulf Breeze
By Gulf Stream

Standard Features

Appliances & Equipment:

- * Flush Mount Refrigerator w/ Freezer.
- * Three Burner Cooktop.
- * Convection/Microwave Oven.
- * Range Hood w/Light & Exhaust Fan.
- * Six Gallon DSI Water Heater.
- * 30,000 BTU Ducted Auto Ignition Furnace, w/ Wall Thermostat.

Bath:

- * ABS Tub or Shower.
- * Fantastic Fan.
- * Adjustable Shower Head.
- * Wall Mirror.
- * Ceiling Light w/Wall Switch.
- * Thetford Foot Flush Toilet.

Electrical:

- * Exterior Amber Lens Patio Light w/Interior Wall Switch.
- * Exterior Dump Valve Light.
- * Exterior LP Station Light.
- * Exterior license plate Light.

- * Exterior Storage w/ Lights.
- * 120 Volt GFI Outside Receptacle.
- * 55 Amp Power Converter.
- * 30 Amp Detachable Marine Power Cord.

Interior:

- * Designer Fabrics.
- * Designer Window Valances and Lambrequins.
- * Congoleum Vinyl Floor.
- * Electric Slide w/ Manual Override.
- * Large Overhead Cabinets.
- * All Wood Slider Drawers w/ Residential Style Guides.
- * 50/50 Deep Kitchen Sink w/High Arch Faucet and Backsplash.
- * Buttermum Euro- Style Countertops.
- * Cabinet Faces Pocket Screwed Together.
- * 80" (6' 8") Interior Ceilings.

Safety:

- * Break Away Switch.
- * Fire Extinguisher.
- * Smoke Dectector.

- * Carbon Monoxide Detector.
- * Ground Fault Circuit Protector.
- * Tinted Windows.

Exterior & Construction:

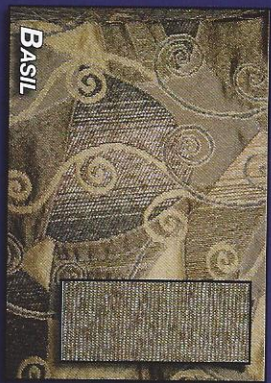
- * Crowned 5"Roof Trusses 16" on Center w/ Fiberglass Insulation. (R9)
- * One Piece Vinyl Roof.
- * Welded 2" Aluminum Framed, Vacuum Bonded Walls and Floor w/ Block Foam Insulation. (R7)
- * Filon Fiberglass Exterior.
- * Radius Corner Entrance Door.
- * Large Radius Corner Storage Doors.
- * Automatic Change - Over LP Tanks w/ Cover and Light.
- * Lighted Oversized Exterior Storage.
- * Heated Enclosed Fresh Water Tank.
- * Sewer Hose Storage in Bumper.
- * Gutter Rails w/ Downspouts on both Sides of Exterior.
- * Gutter Rails w/ Downspouts over Sliderooms.

- * Large Battery Pack.
- * Entry Assist Handle at Door.
- * Flush Entry Door latch w/ Deadbolt Lock.
- * ABS Fender Skirt.
- * Lightweight Frame w/ Powdercoated Paint System.

Specifications

- Hitch Dry Weight (lbs.)
- Total Dry Weight (lbs.)
- Net Carrying Capacity (lbs.)
- Interior Height
- Exterior Height w/out A/C
- Overall Length w/ Hitch
- Fresh Water (gal.)
- Grey Water (gal.)
- Black Water (gal.)
- Dual LP Gas Bottles (lbs.)
- DSI Water Heater (gal.)
- Furnace (BTUS)

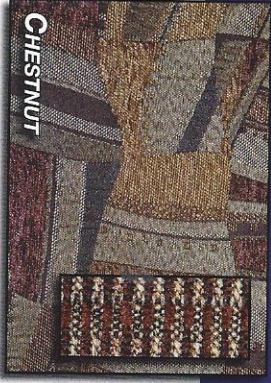
23BWL	23SLB	23 TRS	25FBH	26QBS	26RKS	27BHS	28RLS	29QBH	29BHS	30FKR
TBD	460	530	510	510	TBD	TBD	740	720	640	1180
TBD	5008	3780	3600	4860	TBD	TBD	6156	5570	5960	7130
TBD	2452	2748	3910	2650	TBD	TBD	4744	4258	3644	4210
80"	80"	80"	80"	80"	80"	80"	80"	80"	80"	80"
112"	112"	112"	112"	131"	131"	131"	131"	131"	131"	131"
26'	26'11"	23'10"	26'10"	27'10"	28'	30'2"	33'1"	33'8"	33'8"	33'8"
45	45	45	45	45	45	45	45	45	45	45
38	38	38	38	38	38	38	38	38	38	38
38	38	38	38	38	38	38	38	38	38	38
30	30	30	30	30	30	30	30	30	30	30
6	6	6	6	6	6	6	6	6	6	6
30	30	30	30	30	30	30	30	30	30	30



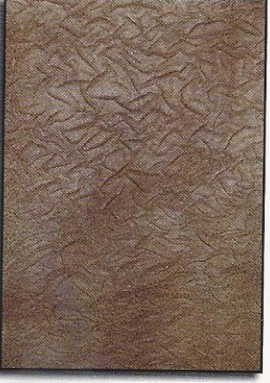
BASIL

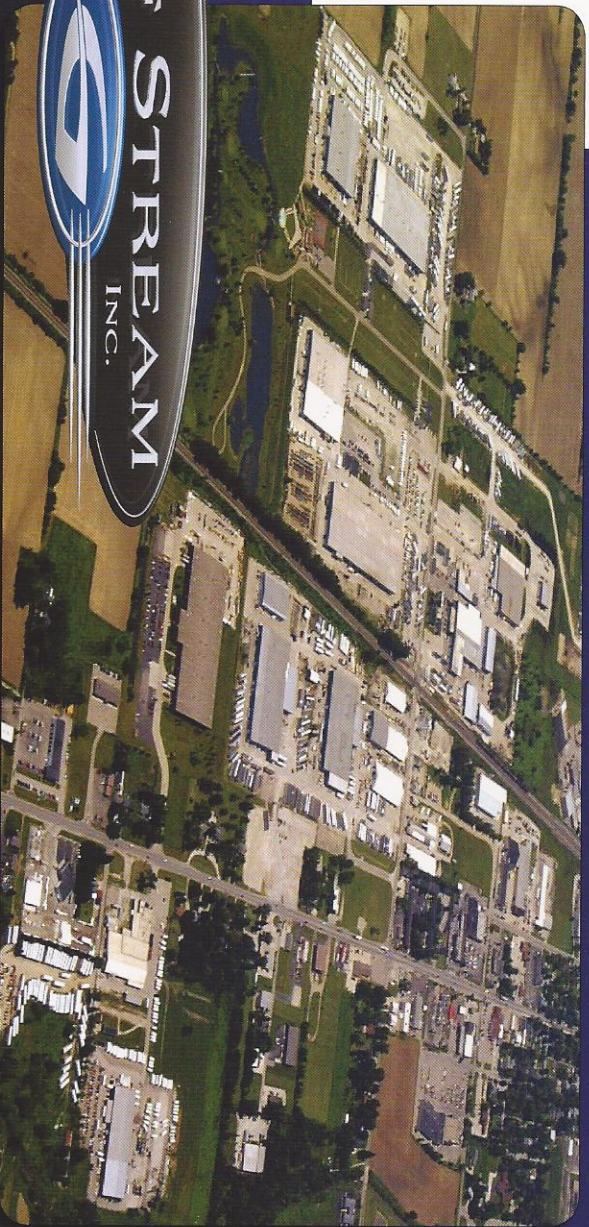


PLATINUM



CHESTNUT





GULF STREAM COACH, INC.



2004
GOLD
AWARD

2005
GOLD
AWARD

2006
PLATINUM
AWARD

2007
PLATINUM
AWARD

Family owned for 25 years, Gulf Stream Coach is a leading manufacturer of high quality and high value RV products that are distributed through a partnership of independent dealers who are focused on exceeding customer expectations.

Located in the heart of the Amish country, the Gulf Stream complex covers over 200 acres and includes more than 1.5 million square feet of state-of-the-art manufacturing facilities fostering the most creative and innovative culture in the RV industry.

Gulf Stream has been awarded the prestigious Platinum Recreational Vehicle Manufacturer Quality & Productivity Award multiple times in recognition of our commitment to producing quality recreational vehicles.

Your family and friends will feel safe and comfortable in a Gulf Stream travel trailer or fifth wheel. Compare and you will see the exceptional value!

2-YEAR Warranty!

In addition to our standard one year warranty, Gulf Stream Coach, Inc. offers an exclusive 24 month warranty on structural components. In addition, major component manufacturers are providing 24 month warranties on their products installed in Gulf Stream units such as refrigerators, antenna, furnace, water heater, air conditioner, awning, range, microwave and more. See the official written Gulf Stream Coach, Inc., Warranty for details.

*For purposes of this warranty, "structural components" shall be limited to the structure of the side walls, front and back walls, roof and floor.

www.gulfstreamrv.com

POST OFFICE BOX 1005

• YOUR GULF STREAM COACH DEALER •

Jerry's Trailers & Campers, Inc.

2601 South 13th St.

Norfolk, NE 68701

(402) 371-1306

www.jerrystrailers.com

NAPPANEE, IN 46550



1 YEAR 2008 NEW WARRANTY under normal usage specific details in manual. 24 MONTH WARRANTY on structural components. See the official written Gulf Stream Coach, Inc. Warranty for details. For more information and available options, contact your local Gulf Stream dealer. www.gulfstreamrv.com or Gulf Stream Coach, Inc. Gulf Stream Coach, Inc., reserves the right to make changes in prices, colors, materials, components and specifications and to discontinue models at any time without notice or obligation. Gulf Stream Coach, Inc., assumes no responsibility for any error in type or print reproduction of specifications or floorplans in this brochure. Photographs may show equipment or items that are optional and are not included in the purchase price of the coach. Test drive and review a current model at your nearest Gulf Stream dealer. © 2002 Gulf Stream Coach, Inc., Nappanee, Indiana U.S.A. 10/08