

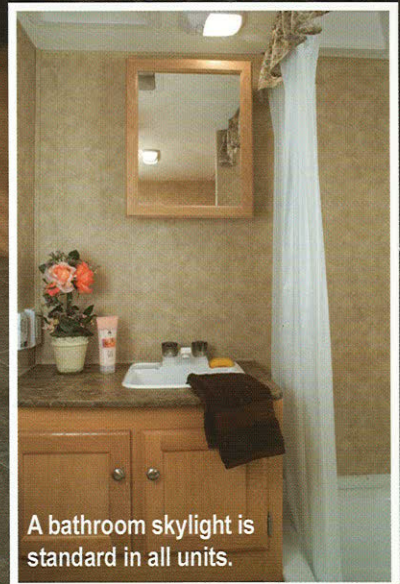
OUR RELENTLESS PURSUIT IS

EXCELLENCE



COYOTE

Travel Trailers



A bathroom skylight is standard in all units.



COYOTE



Bring on the fun!

In today's busy world, spending time with your family is precious. Whether you're off on a week-long adventure or a weekend at the beach, the Coyote by K-Z is the perfect place to reconnect.

The Coyote features spacious tent extensions that allow for a comfortable night's sleep without sacrificing floor space for dining and relaxing. The largest units are equipped with a slideout to increase your living space.

Cook up a nice home-cooked meal in the well-appointed kitchenette with its two-burner stove, oven and microwave and serve it in the spacious dinette. Amenities like an optional CD player and cable-ready TV add the comforts of home.

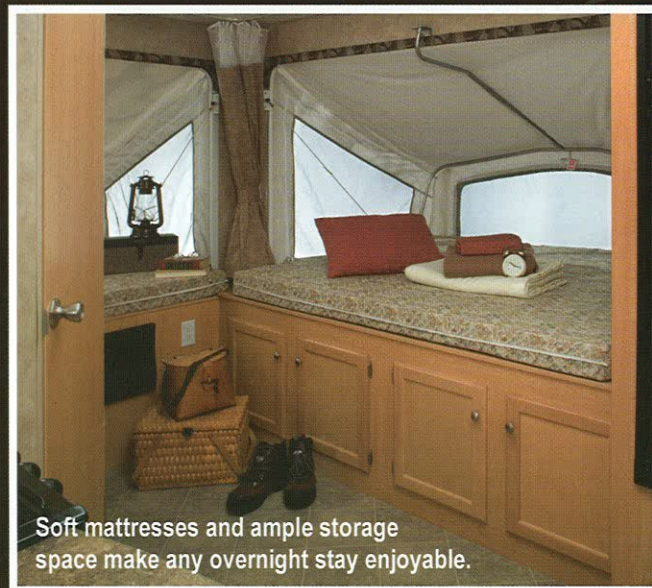
Outside, a generous pass-through storage compartment lets you keep your outdoor equipment organized. Optional exterior grill and exterior shower allow you to fully enjoy the great outdoors.

You can rest assured that storage will never be a problem in your Coyote unit. Large inside wardrobes, lots of kitchen cabinets, overhead compartments and cabinets beneath the bunks allow plenty of room for your indoor storage needs.

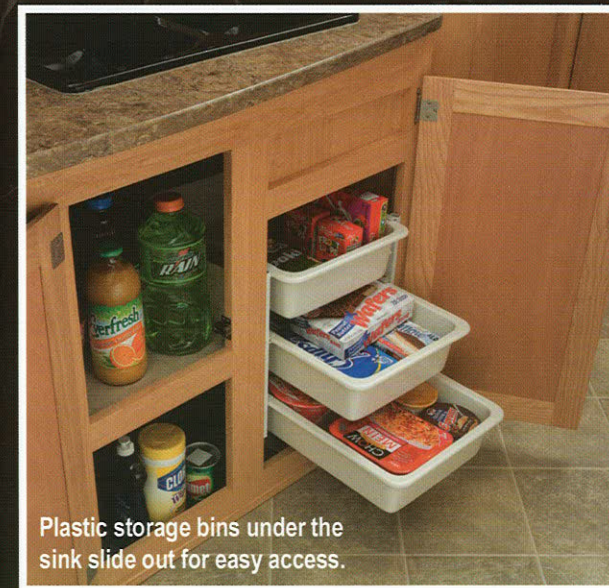
Light maple wood cabinets and your choice of three classy color schemes create a beautiful interior. With nine floor plans to choose from, you're sure to find a Coyote that's perfect for your family.



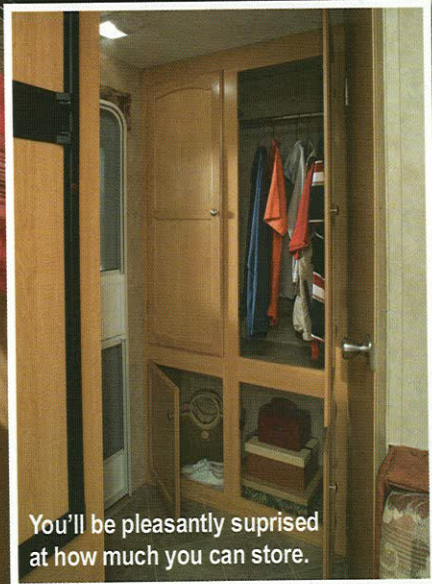
Comfortable furniture and pleasing decors make your Coyote feel like home.



Soft mattresses and ample storage space make any overnight stay enjoyable.



Plastic storage bins under the sink slide out for easy access.



You'll be pleasantly surprised at how much you can store.

COYOTE

Lite
By K-Z



Get up
and go!

The family on the go will love the Coyote Lite by KZ. It's an excellent choice for a family's first travel trailer experience.

The Lite is ruggedly built to go anywhere but lightweight so that it can be easily towed behind small SUVs and light trucks. The new aerodynamic front end means less wind resistance, resulting in less wear and tear on your vehicle and better gas mileage.

Like the Coyote, the Lite features a beautiful wood interior with your choice of three classy fabrics. The gently rounded corners on interior walls add to the stylish look.

The kitchenette provides ample room for cooking everything from quick snacks to hearty meals. You'll love the storage room. The Lite features overhead bins, kitchen cabinets, pull-out drawers and bedroom wardrobes.

The Lite has among the industry's largest windows for its class. With all that natural daylight and the light maple wood interior, you'll be sure to feel at home.

The exterior pass-thru storage makes storing and retrieving items a breeze. An optional exterior shower allows you to clean up quickly. The Lite is the perfect trailer for a quick weekend get-away or an extended stay.



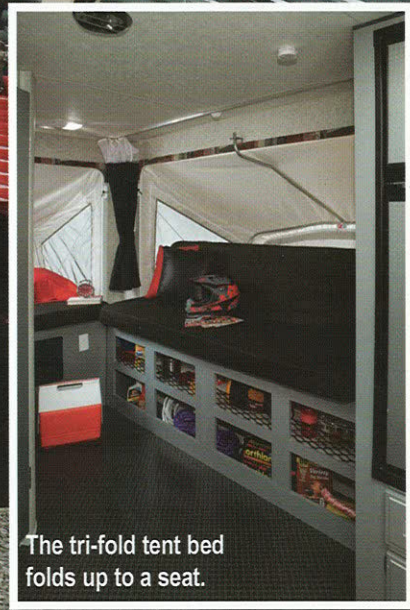
A well-appointed kitchenette makes it a breeze to enjoy a home-cooked meal on the road.



All units are available with flush-mount stove and sink.



The heat vent is covered in the same maple wood as the cabinets for a seamless appearance.



The tri-fold tent bed folds up to a seat.

COYOTE **Rock Climber** by K-Z

*It's time
to play!*

The Coyote Rock Climber is the perfect cure for times when life gets too tame. The rugged exterior is designed for the off-roading experience – without sacrificing interior comforts.

The diamond-injected fenders and 15" aluminum mud bogging tires stand up to any challenge. The high clearance lets you get to where you want to go.

The 8x8-foot forward platform allows you take your "toys" with you. It easily accommodates two ATVs, four dirt bikes or four bicycles.

The pass-thru storage system gives you plenty of space to store accessories. An optional exterior grill and exterior shower, along with an exterior radio and floodlights, allow you to enjoy the outdoors all day long and into the night.

The interior of the Rock Climber is beautifully appointed with light maple cabinets and richly-colored fabrics. The kitchenette provides ample room for cooking your favorite meals and snacks.

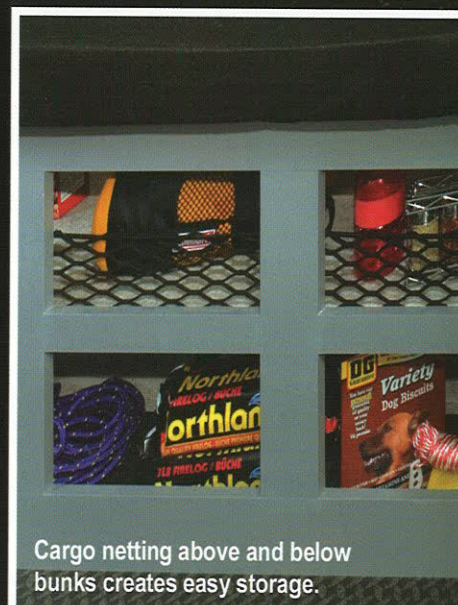
The large tents open up to offer queen-size beds for a great night's sleep. And there's plenty of room for storage. Cargo netting keeps items secure in overhead bins but within easy reach.



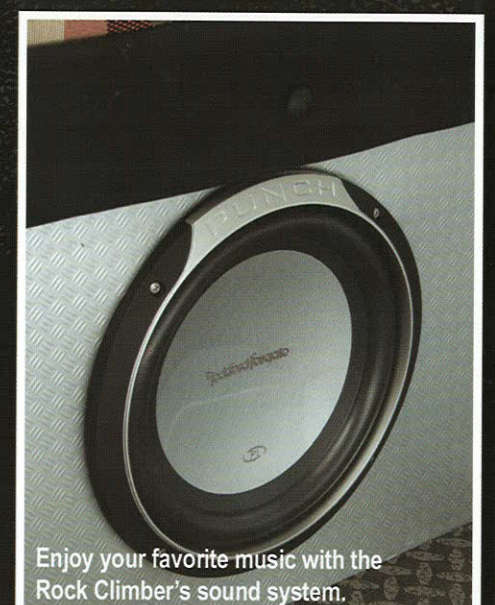
The stain-resistant floor makes clean up easy.



An outside grill is an option for all Coyote units.

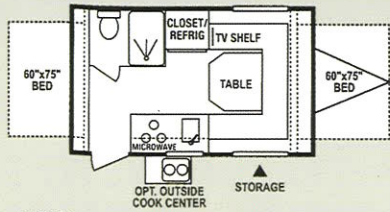


Cargo netting above and below bunks creates easy storage.

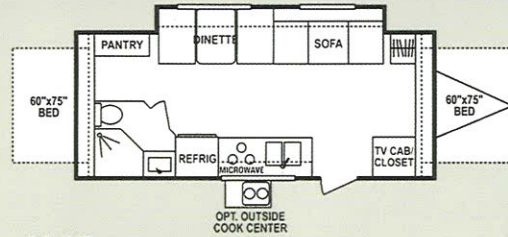


Enjoy your favorite music with the Rock Climber's sound system.

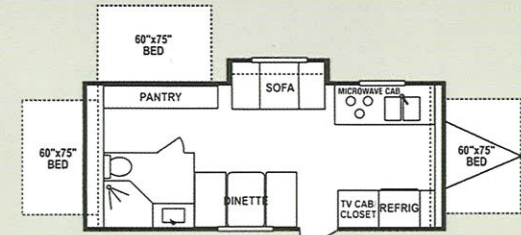
COYOTE



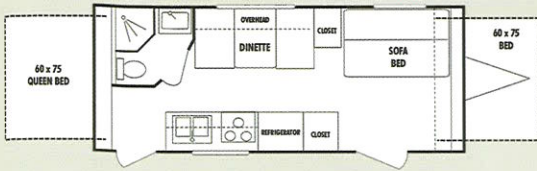
16C•UVW 2815 • Length 18'4"



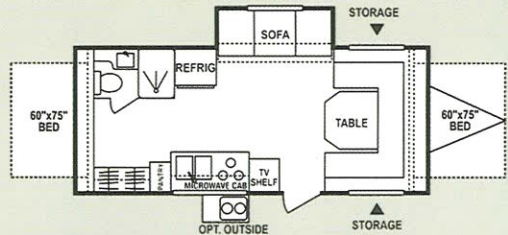
22CP•UVW 4320 • Length 23'8"



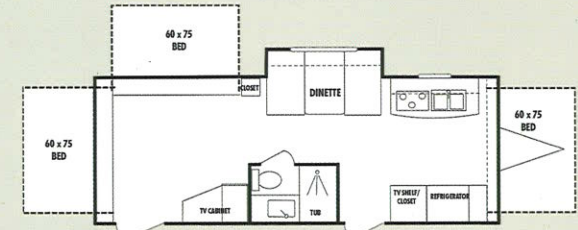
23CFK•UVW 4181 • Length 24'7"



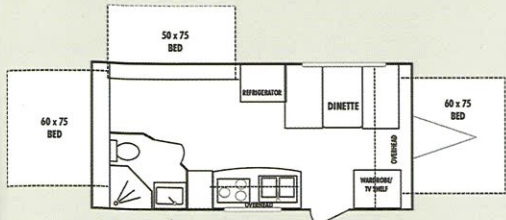
19CR•UVW 3801 • Length 23'6"



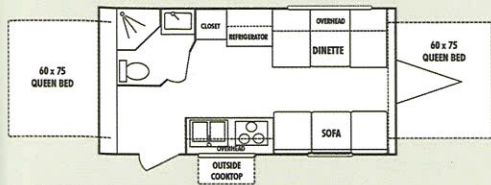
23CMS•UVW 4166 • Length 24'7"



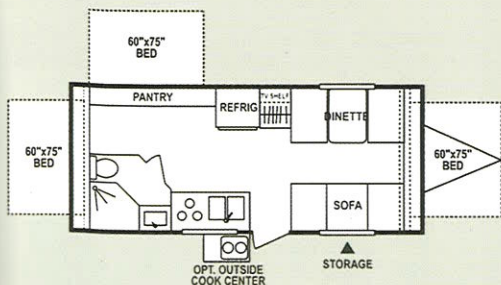
23CR•UVW 4570 • Length 26'3"



19CT•UVW 3696 • Length 21'9"



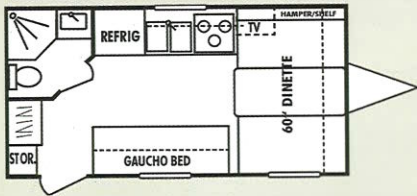
20C•UVW 3352 • Length 20'8"



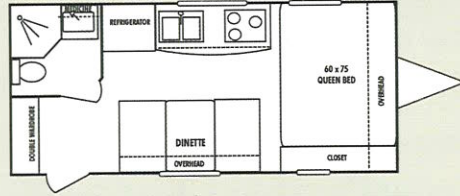
22CT•UVW 3729 • Length 23'7"

	16C	19CR	19CT	20C	22CT	22CP	23CMS	23CFK	23CR
UVW	2815	3801	3696	3352	3729	4320	4166	4181	4570
Dry Hitch Weight	358	472	612	428	511	596	627	663	865
Dry Axle Weight	2648	3520	3275	3115	3409	3915	3730	3709	3896
NCC (Net Carrier Capacity)	1043	1199	1304	1648	1271	1180	1334	1319	930
GVWR	3858	5000	5000	5000	5000	5500	5500	5500	5500
Interior Height	78"	78"	78"	78"	78"	78"	78"	78"	78"
Exterior Width	90"	90"	90"	90"	96"	96"	96"	96"	96"
Exterior Length	18'4"	23'6"	21'9"	20'8"	23'7"	23'8"	24'7"	24'7"	26'3"
Exterior Height (w/o A/C)	8'6"	8'6"	8'11"	8'0'11"	8'11"	8'11"	8'11"	8'11"	8'11"
Fresh Water Capacity	25	32	32	32	32	32	32	32	32
Black Water Capacity	8	30	30	30	30	30	30	30	30
Gray Water Capacity	30	30	30	30	30	30	30	30	30
LP Gas Capacity	20	20	40	40	40	40	40	40	40
Furnace BTUs	16000	16000	16000	20000	20000	20000	20000	20000	20000
Tire Size (Radial)	14"	14"	14"	14"	14"	14"	14"	14"	14"
Awning Size	9'	12'	14'	14'	14'	14'	14'	14'	14'
Sleeping Capacity	4-6	4-8	6-8	4-8	6-10	4-8	4-8	6-10	6-8

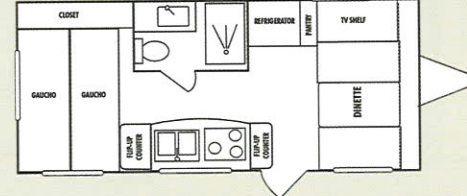
COYOTE LITE



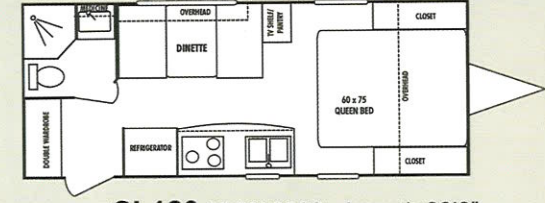
CL162•UVW 2873 • Length 20'5"



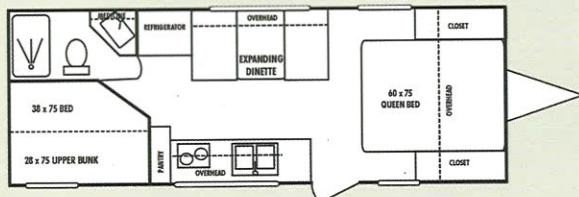
CL164•UVW 2886 • Length 20'5"



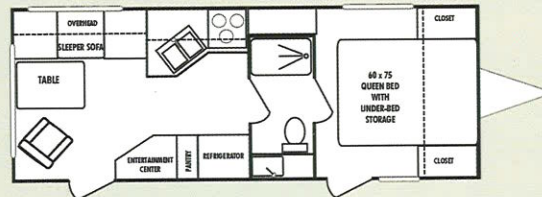
CL168•UVW 2821 • Length 20'5"



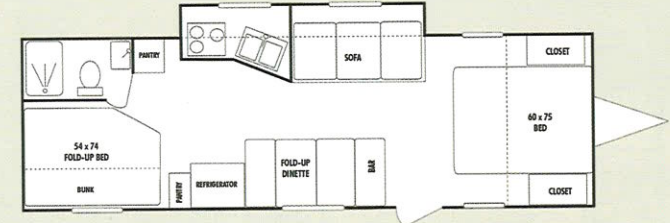
CL180•UVW 3588 • Length 23'8"



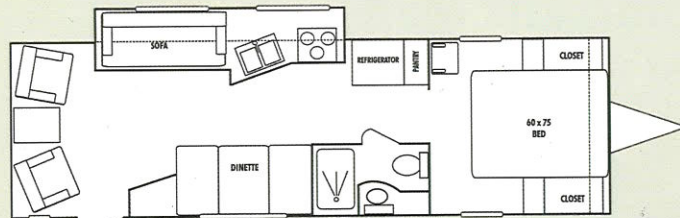
CL230•UVW 3705 • Length 27'0"



CL250RL•UVW 3932 • Length 26'3"



CL280BH•UVW 4903 • Length 31'2"



CL282RL•UVW4237 • Length 31'7"

Coyote trailers offer ample exterior storage to keep your equipment organized.

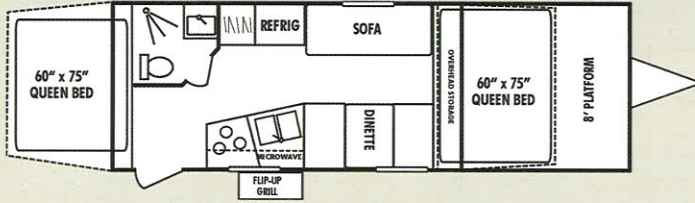


All Coyote units have radius corners on walls. Bathrooms feature skylights and radius-corner showers.

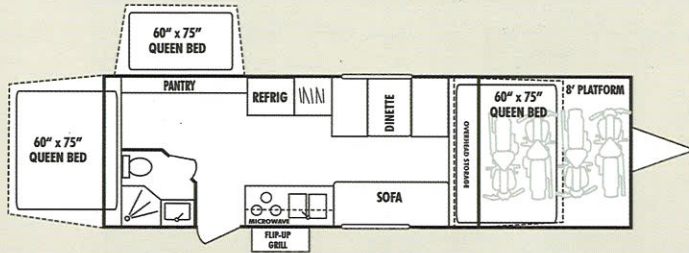


	CL162	CL164	CL168	CL180	CL230	CL250RL	CL280BH	CL282RL
UVW (w/o options)	2873	2886	2821	3588	3705	3932	4903	5160
Dry Hitch Weight	264	285	269	459	389	416	620	595
Dry Axle Weight	2609	2601	2552	3129	3316	3516	4283	4565
NCC (Net Carrier Capacity)	891	1114	1179	1412	1295	1068	1097	3764
GVWR	3764	4000	4000	5000	5000	5000	6000	7000
Interior Height	78"	78"	78"	78"	78"	78"	78"	78"
Exterior Width	90"	90"	90"	90"	96"	96"	96"	96"
Exterior Length	20'5"	20'5"	20'5"	23'8"	27'0"	26'3"	31'2"	31'7"
Exterior Height (w/o A/C)	8'6"	8'10"	8'10"	8'11"	8'11"	8'11"	8'11"	8'10"
Fresh Water Capacity	32	32	32	32	32	32	50	32
Black Water Capacity	30	30	30	30	30	30	30	30
Gray Water Capacity	30	30	30	30	30	30	30	30
LP Gas Capacity	20	20	20	40	40	40	40	20
Furnace BTUs	16000	16000	16000	16000	20000	20000	20000	16000
Tire Size (Radial)	14"	14"	14"	14"	14"	14"	15"	15"
Awning Size	12'	12'	12'	14'	14'	14'	14'	14'

ROCK CLIMBER

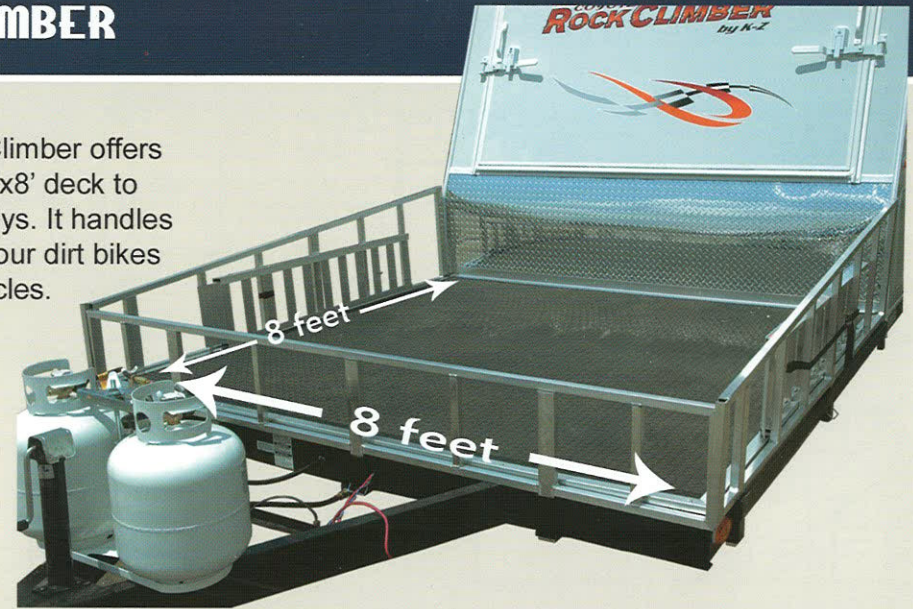


CRC201 • UVW 3832 • Length 29'7"



CRC220 • UVW 4237 • Length 32'4"

The Rock Climber offers an ample 8'x8' deck to haul your toys. It handles two ATVs, four dirt bikes or four bicycles.



INTERIOR DECORS FOR COYOTE, COYOTE LITE AND ROCK CLIMBER

CRC201 CRC220

UVW (w/o options)	3832	4237
UVW (w/ options)	4332	4791
Dry Hitch Weight	280	334
Dry Axle Weight	4052	4457
NCC (Net Carrier Capacity)	2668	2263
GVWR	6500	6500
Interior Height	78"	78"
Exterior Width	96"	96"
Exterior Length	29'7"	32'4"
Exterior Height (w/o A/C)	8'11"	8'11"
Fresh Water Capacity	55	55
Black Water Capacity	30	30
Gray Water Capacity	30	30
LP Gas Capacity	40	40
Furnace BTUs	20000	20000
Tire Size (Radial Mud Boggers)	15"	15"
Awning Size	14'	14'



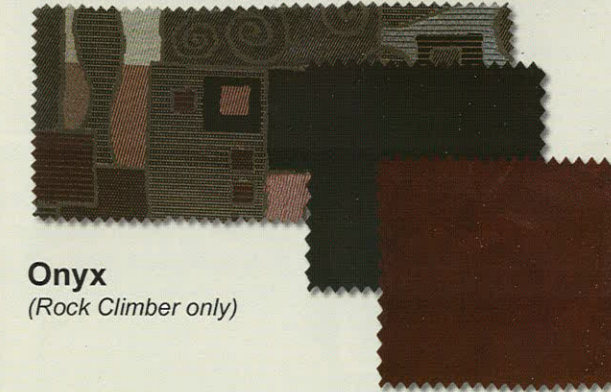
Autumn



Beachfront



Greystone



Onyx
(Rock Climber only)

Standards & Features

C=Coyote
L=Coyote Lite
R=Rock Climber

APPLIANCES/EQUIPMENT	C	L	R
6 c.f. Flush Mount Norcold Refrigerator	•	•	•
3 Burner Range Top	•	•	•
12V Range Hood with Light	•	•	•
Six Gallon Gas Water Heater	•	•	•
Outside Grill	•	•	•
Shurflo Water Pump	•	•	•
Microwave	•	•	•
Laminated Countertops	•	•	•
Double Bowl Kitchen Sink	•	•	•
Outside Cook Center (where available)	•	•	•
Flared Copper LP Gas Lines	•	•	•
Color Coded Water Lines	•	•	•
Water Heater Bypass Kit	•	•	•
Satin Finish High Rise Faucet	•	•	•
16,000/20,000 BTU Furnace	•	•	•

BATH	C	L	R
Wall Mounted Light Switch	•	•	•
Monitor Panel	•	•	•
Medicine Cabinet with Mirror	•	•	•
Sink and Faucet	•	•	•
Tub Surround	•	•	•
Adjustable Shower Head	•	•	•
Power Roof Vent	•	•	•
Thetford Toilet	•	•	•
Shower Curtain	•	•	•
ABS Shower Pan or Tub	•	•	•
Skylight in Bathroom	•	•	•
12v Power Vent	•	•	•

CONSTRUCTION	C	L	R
Sidewalls with 1 1/2" Polystyrene Block	•	•	•
Foam Insulation (R-7)	•	•	•
Radius Bathroom Walls	•	•	•
Frame, Brace and Wired for A/C	•	•	•
Rotocast Holding Tanks	•	•	•
Rotocast Fresh Water Tank	•	•	•
Cable Support For Bunk Ends	•	•	•
Alko Kober Lightweight European Frame	•	•	•
One Piece Woven Plastic Underbelly on Floor	•	•	•
1/2" Plywood Floor	•	•	•
One Piece, Seamless TPO Roof	•	•	•

EXTERIOR EQUIPMENT	C	L	R
Power Slide	•	•	•
Stabilizer Jacks (4)	•	•	•
White Mods Wheels	•	•	•
Metal Wheel Well	•	•	•
Lockable Bunk Ends	•	•	•
Vinyl Tent with 5 Year Warranty	•	•	•
Sunbrella Tent	•	•	•
Sewer Hose Compartment	•	•	•
Heavy Duty Retractable Entry Step	•	•	•
Painted Bottom Radius Metal Skirting	•	•	•
Drip Spouts	•	•	•
Radius Entrance Door	•	•	•
E-Z Lube Alko Axles	•	•	•
Lockable, Radius Corner Baggage Doors	•	•	•
ABS Fender Skirts	•	•	•
2 5/16" Hitch Coupler	•	•	•
Patio Light	•	•	•
14" Radial Tires	•	•	•
15" Radial Tires	•	•	•
Exterior Shower	•	•	•
110V GFCI Exterior Receptacle	•	•	•
City Water Fill	•	•	•
Spare Tire, Carrier & Cover	•	•	•
Awning	•	•	•
Gravity Water Fill	•	•	•
TV Antenna & Booster	•	•	•
13,500 BTU A/C	•	•	•
20# Propane Gas Bottle	•	•	•
30 Amp Power Cord	•	•	•
45 Amp Converter	•	•	•

SAFETY EQUIPMENT	C	L	R
Smoke Detector	•	•	•
Lp Detector	•	•	•
Egress Windows	•	•	•
Fire Extinguisher	•	•	•
Breakaway Switch	•	•	•
Carbon Monoxide Detector	•	•	•
Dual Safety Chains	•	•	•
Monitor Panel	•	•	•
Dead Bolt on Entry Door	•	•	•

INTERIOR EQUIPMENT	C	L	R
Quilted Decorated Bedspread (Selected Models)	•	•	•
Shirt Wardrobe	•	•	•
Bathroom Accessories	•	•	•
Sink Cover	•	•	•
5" Cushions for Bunk Ends	•	•	•
AM/FM/CD Player	•	•	•
Lights in Bunk Ends	•	•	•
RG6 Coax with Cable Hookup	•	•	•
Satin Finish Flat Panel Doors	•	•	•
Maple Wood, Mortise & Tenon Flat Panel Doors	•	•	•
Mini Blinds	•	•	•
Vinyl Flooring	•	•	•
Wall Border Tape	•	•	•
Molded Plastic Drawer Bins	•	•	•
Steel Drawer Frame for Bins	•	•	•

OPTIONAL EQUIPMENT	C	L	R
Euro Package	•	•	•
Stove Cover	•	•	•
Outside Grill	•	•	•
Aluminum Wheels	•	•	•
Heated Bunk End	•	•	•
Tinted Safety Windows	•	•	•
Thule (Trash Basket & Table) (where available)	•	•	•
Bench Seats	•	•	•
Sport Entertainment Package 1	•	•	•
50 Gallon Fresh Water	•	•	•



COYOTE



COYOTE Lite
by K-Z



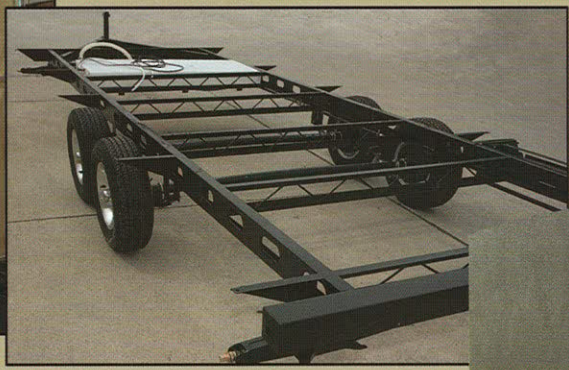
COYOTE Rock Climber
by K-Z

Our relentless pursuit is Excellence

K-Z RV began its relentless pursuit of excellence in 1972. The company's goal then was to build travel trailers with quality from top to bottom.

In addition, K-Z made a commitment to provide top-notch service to new and existing customers, as well as its many RV dealerships.

Today K-Z continues to pursue those goals with quality materials, dedicated workmanship, quick and courteous service and innovative designs.



KZ-RV is committed to building high-quality travel trailers that will take you safely on many adventures. The quality starts with the double-welded I-beam chassis with outriggers for stability and durability, topped with a lightweight European frame. Sidewalls are built of 1½" polystyrene block with R-7 foam insulation. All units 18 feet and longer have a crown roof.

The pursuit of excellence is its own reward, but it's also nice when others recognize it. K-Z RV earned the prestigious Quality Circle Award from the Recreational Vehicle Dealers Association every year from 2000-2005. The award means K-Z was in the top 20 percent in each category of the RVDA's Dealer Satisfaction Index. K-Z continues to offer the same level of service year after year.



2x2 WARRANTY – The K-Z 2x2 Warranty is a manufacturer's warranty. Each K-Z product is warranted to the original purchaser for twenty-four (24) months from the original date of purchase. Coverage includes appliances, components, construction and FULL structure. Our warranty is also transferable within the first two (2) years for a small processing fee. For a copy of the warranty with full terms and conditions, ask your local K-Z Dealer.

VEHICLE LOADING – Every effort has been made to provide the greatest number of options for the recreational owner. Each owner is responsible to select loads allowing the recreational vehicle to remain within the manufacturer's specified chassis weight limits. Do not overload the recreational vehicle.

UNLOADED VEHICLE WEIGHT (UVW) – The typical weight of this trailer as built at the factory. The UVW does not include cargo, LP gas, fresh water, options or dealer-installed accessories.

GROSS VEHICLE WEIGHT RATING (GVWR) – The maximum permissible weight of the trailer, including the UVW plus passengers, all cargo, personal items, fluids, options and dealer-installed accessories. The GVWR is equal to or greater than the sum of the UVW and the NCC.

NET CARRYING CAPACITY (NCC) – The maximum weight of all passengers, personal items, fresh water, food, tools, LP gas, other cargo and dealer-installed accessories* that can be carried by the trailer. NCC is equal to or less than the GVWR minus UVW.

* The addition of options will decrease the NCC.

Note: This information is intended as a guide only. Weights of individual vehicles are approximate. Consult your Owner's Manual for complete loading, weighing and towing instructions. All weights may vary.

See specification chart above. K-Z affixes a weight label to each new RV which lists weight information for that vehicle.

Dealer
Jerry's Trailers & Campers, Inc.
2601 South 13th St.
Norfolk, NE 68701
(402) 371-1306
www.jerrystrailers.com



K-Z • 0985N 900W • Shipshewana, IN 46565
E-mail kz@kz-rv.com • www.kz-rv.com

Due to continual research and advances, manufacturer reserves the right to change specifications, design, price and equipment without notice, and assumes no responsibility for any error in this literature. Some items shown are not included as standard or optional equipment. ©2007K-Z