

**CONQUEST**  
BY GULFSTREAM®



**CONQUEST**  
BY GULFSTREAM®

QUALITY, VALUE & INNOVATION SINCE 1983



*unique innovations*

*quality construction*

*family oriented*

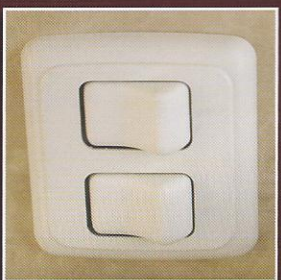
*more features*

*best value*

Gulf Stream products are created with your family in mind. Utilizing the finest engineering and highest quality construction, Conquest is a standard-bearer of Gulf Stream's dedication to exceeding your discerning expectations.

With a Gulf Stream travel trailer or fifth wheel you know you will get the safest, feature-packed recreational vehicle available at an unmatched price.

Now that we've peaked your interest, it's on to those discerning expectations...

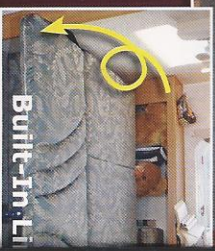


Large rocker-switches, not only does Gulf Stream provide an entry switch but we also switch most lights in sleeping and bath areas for everyone's convenience



Gulf Stream towables are full of convenient features like the "Pots-n-Pan" drawer... helping to make your camping experience more like living at home.

We utilize available storage to make access to frequently used items easy. (on most supreme models)

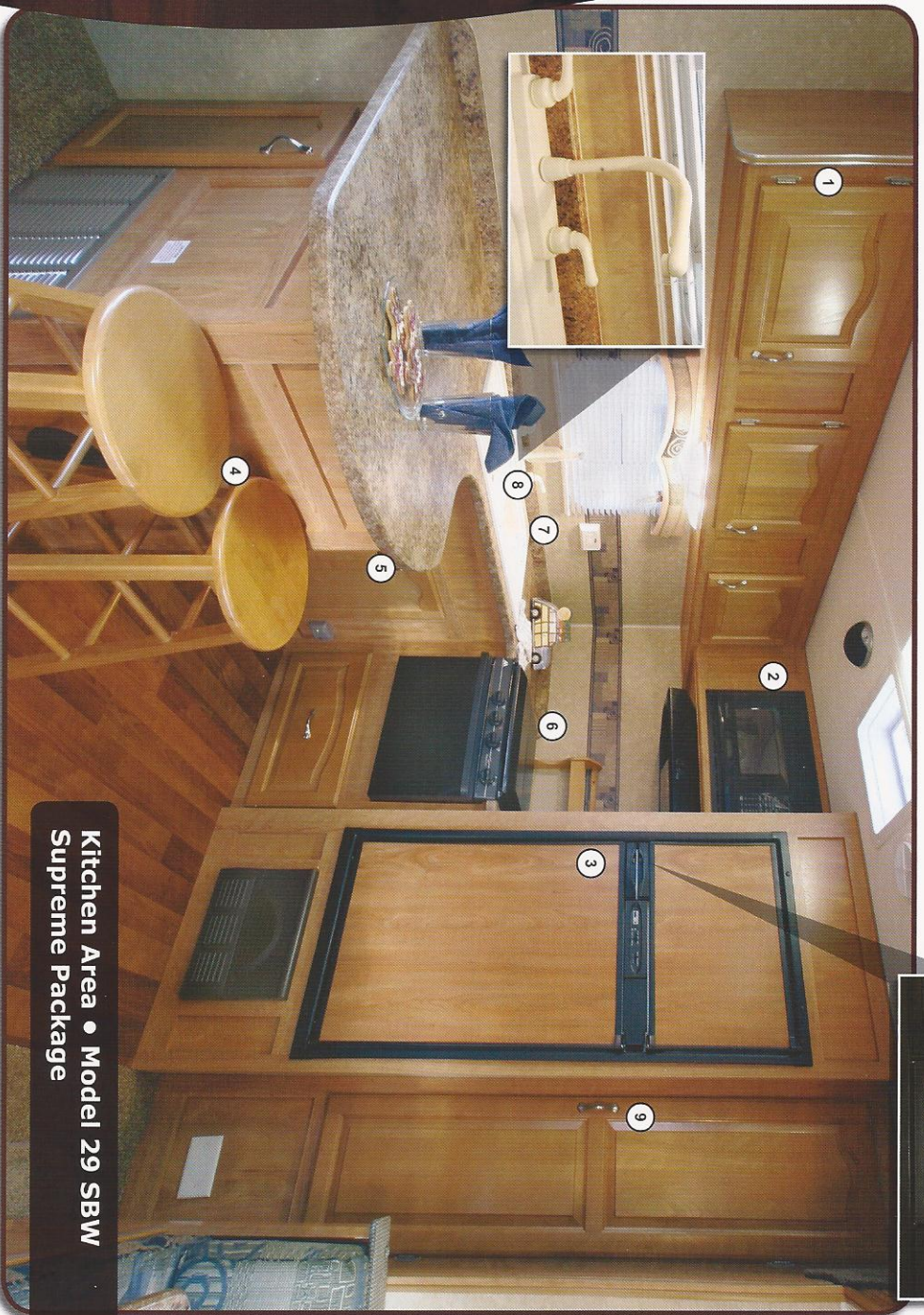


Built-In-Li



**Main Living Area • Model 28 RLR Supreme Chianti Burgundy**

When it comes to interior spaciousness, you and your family will appreciate the extra room our Super Slide-Outs offer as seen in this 28' travel trailer.



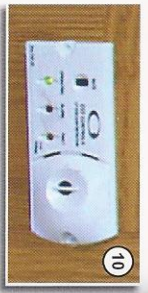
**Kitchen Area • Model 29 SBW  
Supreme Package**

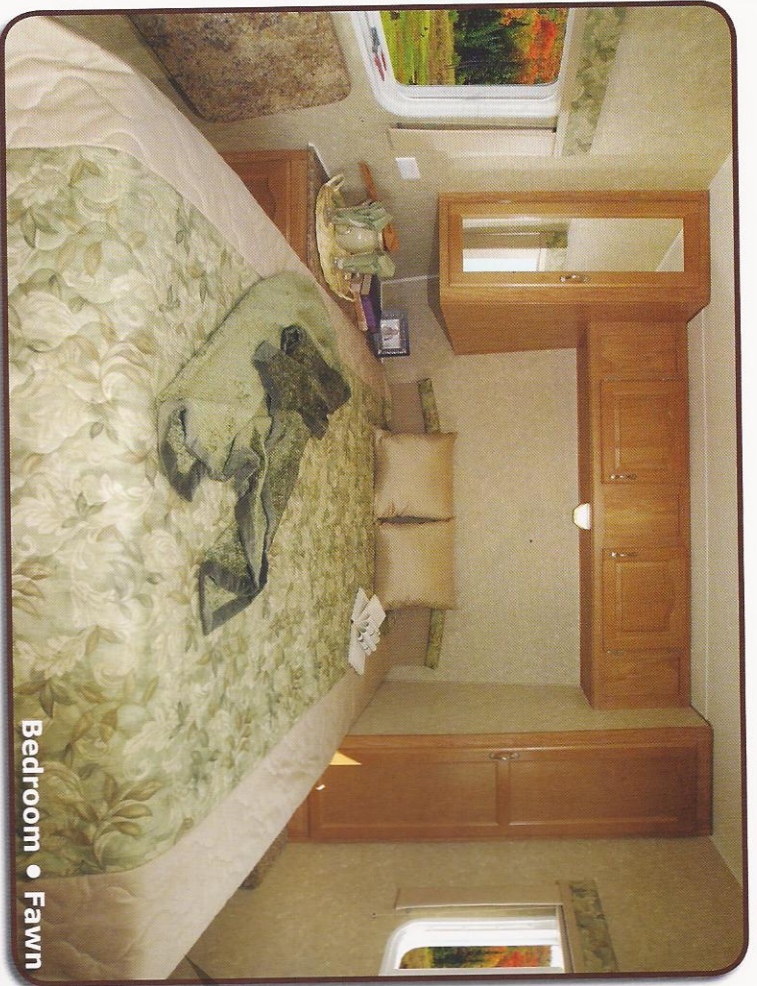
1. Deep and full overhead cabinets allow easy storage for items of all sizes. Solid hardwood mortise and tenon cathedral cabinet doors are standard.
2. High watt carousel microwave oven is standard for fast efficient cooking.
3. A large refrigerator/freezer with adjustable thermostat for family size trips is standard.
4. Bar stools and enlarged counter top for convenient and expanded eating space. (on some models).
5. All solid hardwood faced cabinet drawers are guided and vinyl lined for easy cleanup. (not pictured)
6. Open cooking space with knife holder conveniently located near the standard 3 burner high output range and large oven.
7. Residential type backsplash and large sink make cleanup a breeze with hot water from your standard auto ignition gas water heater..
8. Metal Hi-Rise Gooseneck Faucet.
9. A tall shelved pantry is standard in many galleys.
10. LP/CO2/Smoke detector is a standard health and safety feature.
11. AM/FM/CD/DVD stereo is standard. (Lites, a CD player is standard) (not pictured)



To help maximize quality, Gulf Stream Coach, Inc., is located in Nappanee, Indiana... the heart of Amish country.

To workers here, craftsmanship and pride in their work is a way of life.





**Bedroom • Fawn**

Our queen size, walk-around bed has this hidden "Lift-up" storage area supported by automatic gas pistons and fully finished to protect your cargo from damage or load shifting. This is a standard feature in all our travel trailers and fifth wheels to better accommodate your storage needs. Solid privacy doors offer a residential touch of class in many models.

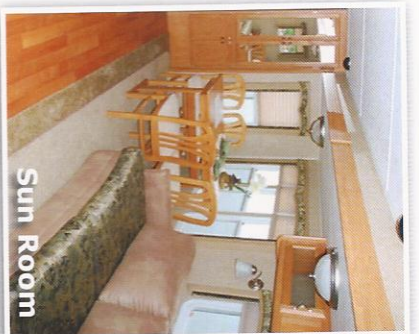
## *bedroom areas*

Gulf Stream travel trailers and fifth wheels are your best choices for feature-packed towables at an affordable price.

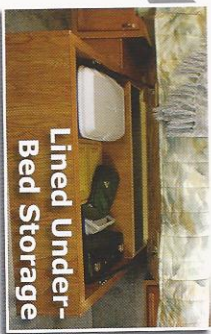
With numerous functional and livable floorplans from which to choose, including super slide-out or sofa slide models featuring loads of interior and exterior storage, sleek exterior graphics and more standard features than any coach on the market... Gulf Stream offers just about every amenity you'd ever want in a towable recreational vehicle, for LESS!

See for yourself its superior construction and why it's the best value on the market today.

You will appreciate the Amish-crafted cabinetry ... featuring generous base and overhead storage, and deep overheads, this interior exudes class. Designer-coordinated decors feature only the finest durable fabrics and carpeting, for an overall look of quality and craftsmanship.



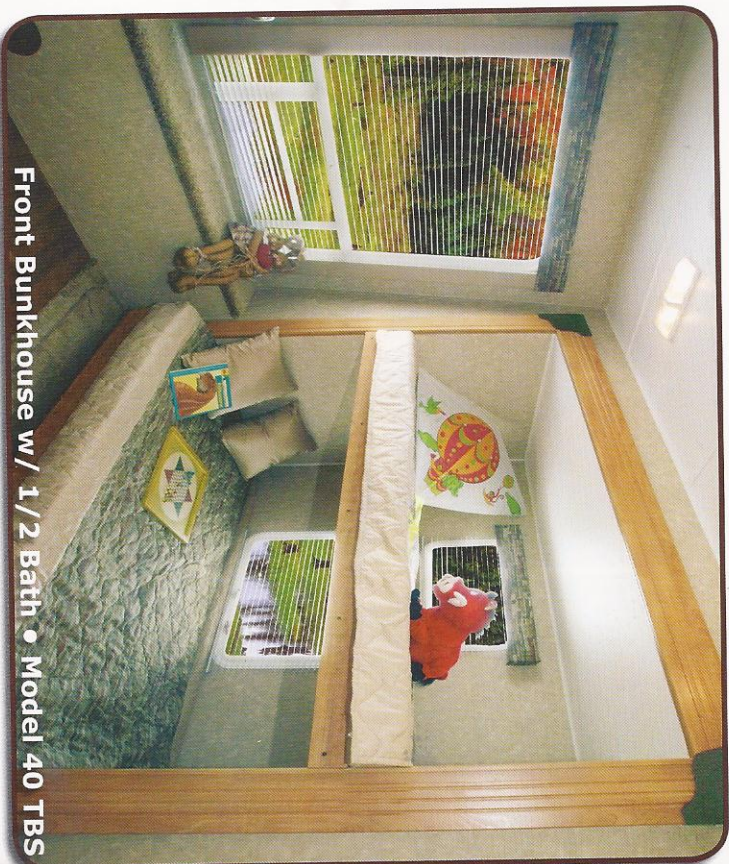
**Sun Room**



**Lined Under-Bed Storage**



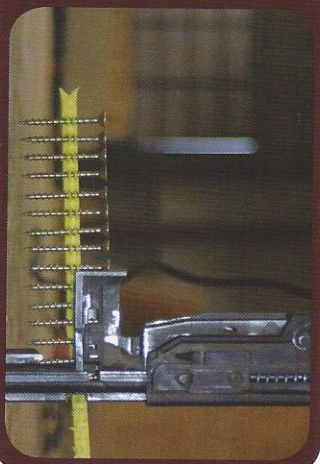
**Glass Corner Shower**



**Front Bunkhouse w/ 1/2 Bath • Model 40 TBS**

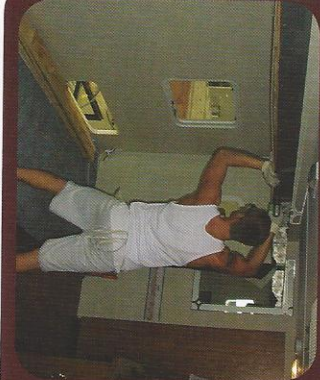
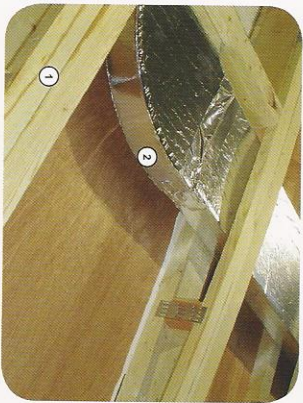


Gulf Stream constructs each coach using only the finest quality materials. The 5/8" floor decking is both glued and screwed to the sturdy 2x3 floor joists which are 13" on center and fully insulated. Then the floor assembly is bolted to the steel frame, providing one of the strongest floor systems on the market!

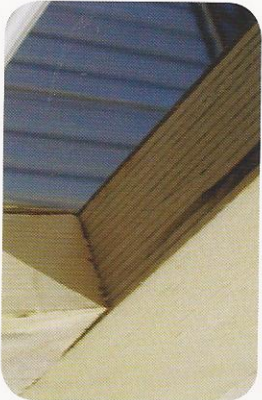
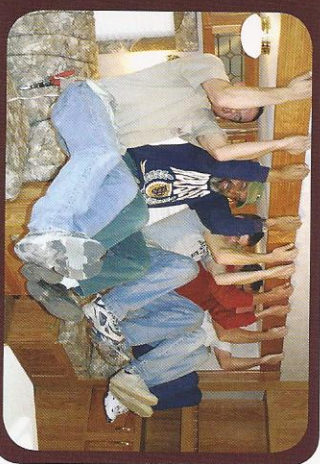


Our roofs are 4 1/2" solid wood bow truss rafters. Designed for good drainage and maximum strength. Features include:

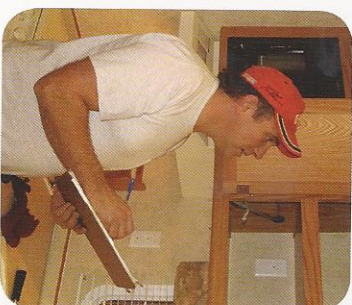
1. Double trusses are used at the air conditioner ducts.
2. Optional central air conditioner uses 1/2" insulated foam duct work (Note: a coffee cup is only 1/8") and radius joints for maximum air flow and comfort.
3. Backers are installed where all interior equipment is screwed in from below. (not shown)
4. Wood decking, glued, screwed and topped with a one piece seamless roof. (not shown)



Gulf Stream uses the best slide room system construction techniques, many that we have pioneered to become the industry leader. 4 1/4" tall by 1/2" thick steel support beam is a unique feature used on all "Super-Slide" models. This gives Gulf Stream a true "Clear Span" slide room.



Micro-lam (laminated wood headers) are used in slide-room openings. These eliminate the warping that many other manufacturers experience.



At Gulf Stream we go through several rigid inspections that include water, gas, electrical, structural and of course cosmetic aspects of your new RV.

All of this to make each trip the best that it can be!



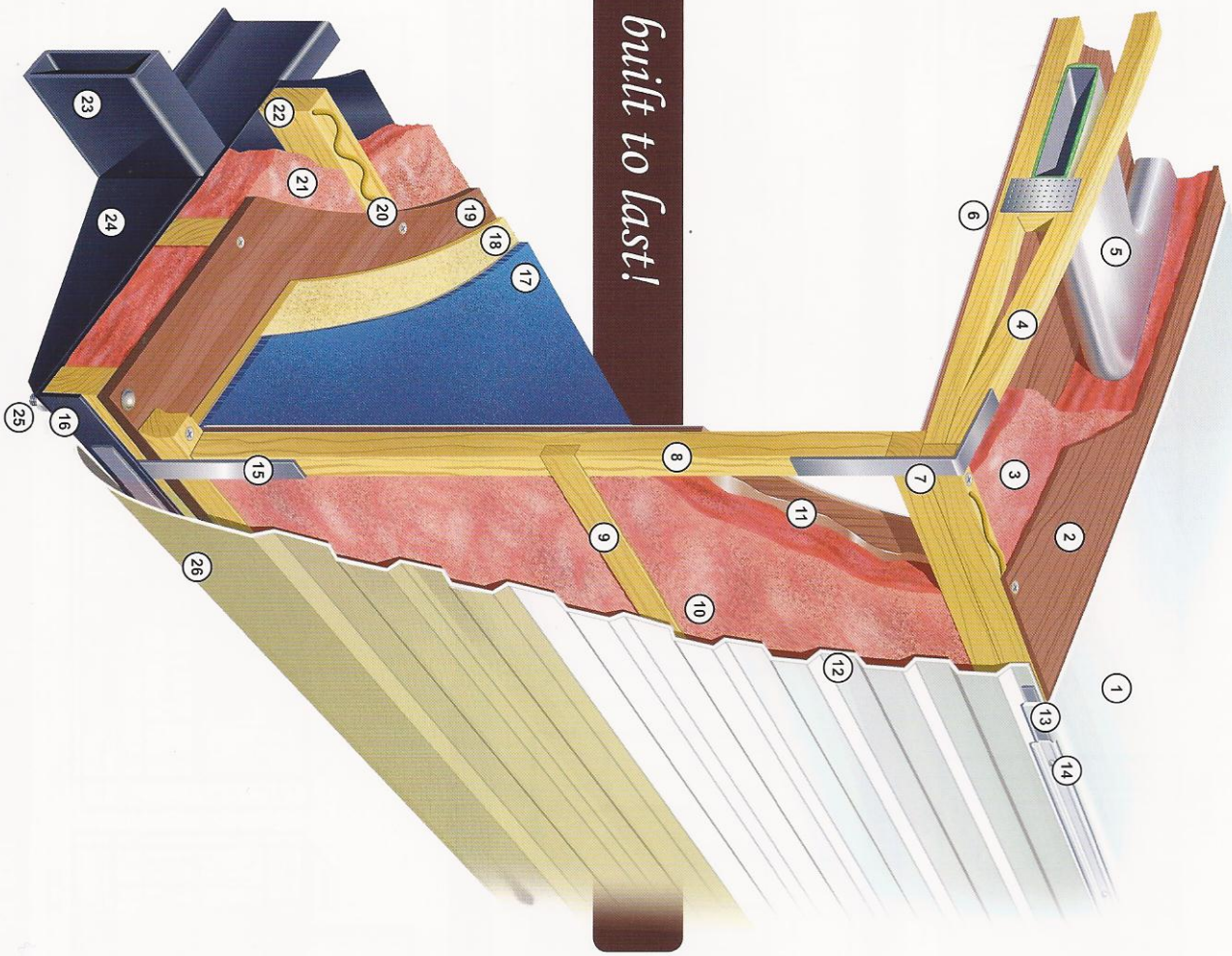
Sidewall construction at Gulf Stream has several unique benefits:

1. Sidewalls are always set on top of the floor and screwed down for maximum strength.
2. Steel bands connect the walls to the floor.
3. A dado belt rail is a unique feature that adds vertical integrity.
4. Insulation is hand cut and glued into place. Unlike a blanket, this offers higher R-values and won't creep down.



A secondary "cap seal" is applied over all exterior corner joints. The "cap seal" is a non silicone base sealant that will not blacken or yellow with time.

*superior in every way*

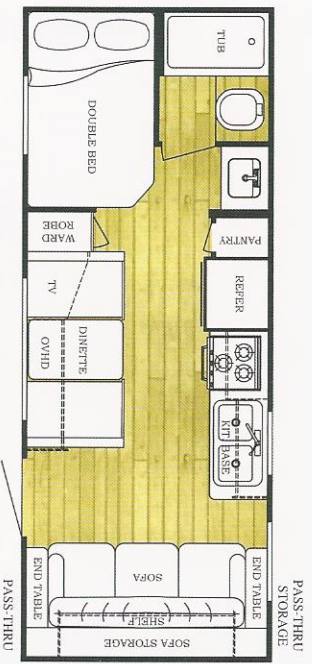


*built to last!*

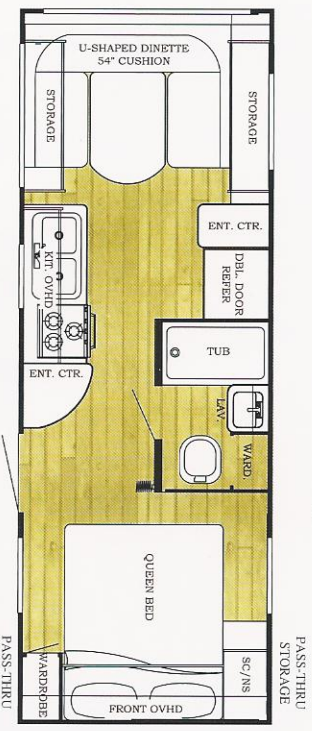
1. One-Piece, Seamless Roof with 12 Year Warranty
2. Strong Wood Roof Decking, Glued and Screwed
3. Thick Blanket of Fiberglass Insulation
4. 4½" Residential Style Bowed Roof Truss System (not particle board)
5. Insulated Air Conditioning Duct System with Radius Corners for Improved Air Flow (optional)
6. Interior Ceiling Board
7. Galvanized Steel Straps - Used to Increase the Roof-to-Sidewall Transition Strength and Solidify our Uni-Body Construction
8. Sturdy 2 x 2 Wood Sidewall Construction, 16" On Centers (Walls are always set on the floor, not next to it, for maximum strength, and screwed into place)
9. Dadoed Belt Rail Construction Through the Middle of the Side and End Walls Provides Additional Uni-Body Strength
10. Thick Blanket of Fiberglass Insulation, Hand-Cut and Fit for Long Lasting Energy Efficiency
11. Glue Used to Bond Hand Cut Insulation to Interior Wall Board - To Eliminate Possible Slipping or Movement
12. Exterior Aluminum Sliding with Baked Enamel Finish
13. Butyl Caulking for Superior Seal & Less Black Streaks
14. Drip Rail/Awning Rail, Screwed to Roof Framing - Helps Keep Unit Clean
15. Galvanized Steel Straps - Used to Increase the Sidewall-to-Floor Transition Strength and Solidify our Uni-Body Construction
16. Tough Poly Max Underbelly Wrapped Up Sides and Ends, Protects Against Moisture and Road Debris
17. Plush, Durable Residential-Style Carpeting (Supreme)
18. Thick Foam Carpet Padding (Supreme)
19. 5/8" Floor Decking Screwed and Glued
20. Floor Decking Glued and Screwed to Floor Joists
21. Thick Blanket of Fiberglass Insulation
22. Sturdy 2 x 3 Wood Floor Joist System, 13" or Less O.C.
23. 2 x 6 Tubular Steel Frame (up to 30') 8" I-Beam Frame (32' and up)
24. Full Width Steel Outriggers - Superior Strength & Support
25. Steel Bolts Secure Floor-To Steel Outriggers
26. Exterior Metal is Screwed into Floor Framing From Side, Not Stapled from the Bottom, Preventing Leaks

*Lite series floor plans*

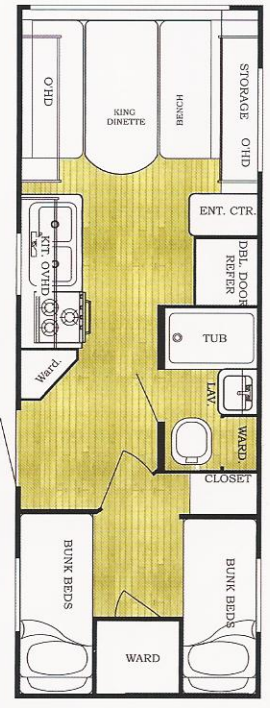
**Ultra-Lites - We have a full selection of Ultra-Lites from 15' to 27'. Ask your dealer for a Conquest or Ameri-Lite Ultra-Lite brochure.**



**20 BHL**



**23 BWL**



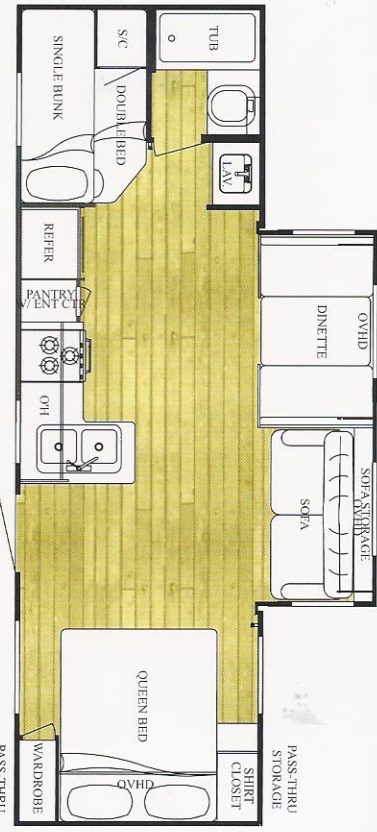
**23 DBL**



**24 BHL**

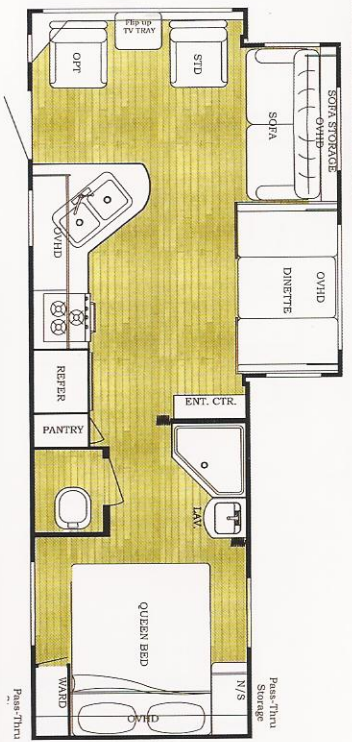


**24 RKL**



**259 BHL**

# travel trailer series floor plans



**261 RLS**



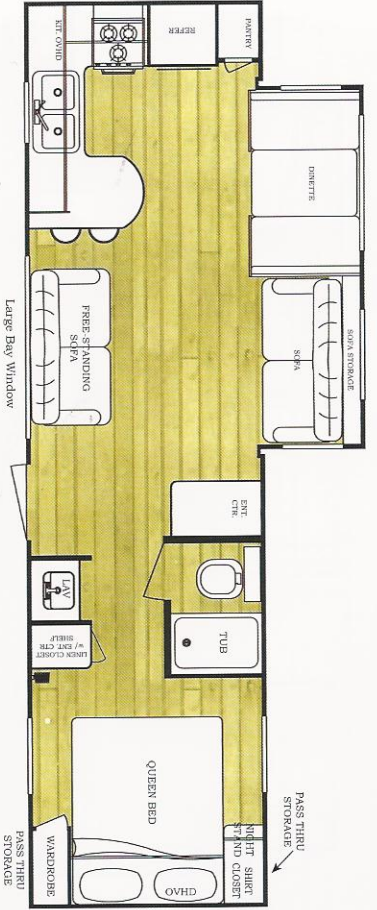
**275 FSL**



**275 FBL**



**28 RLR**



**29 SBW**

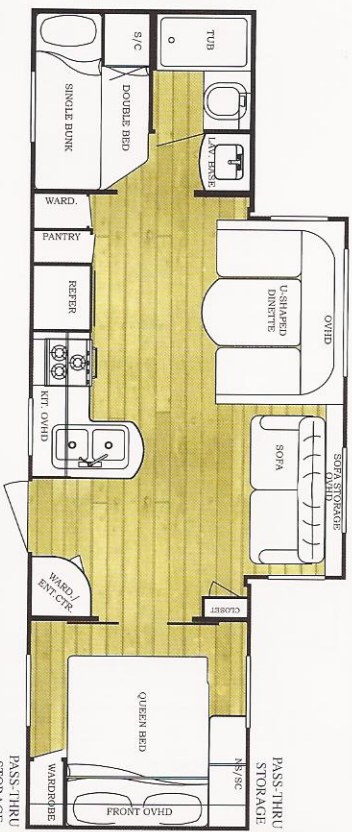


**291 SBW**

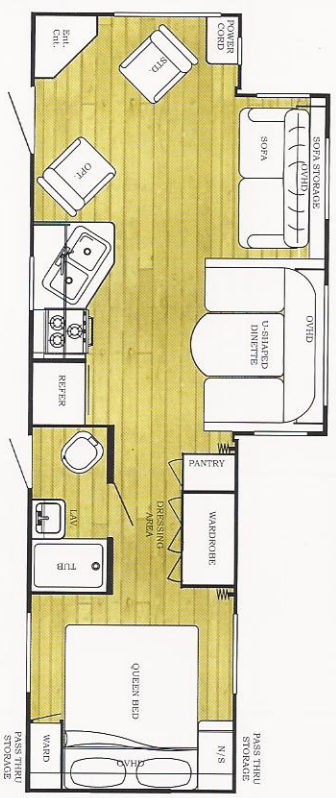
tt series floor plans continued



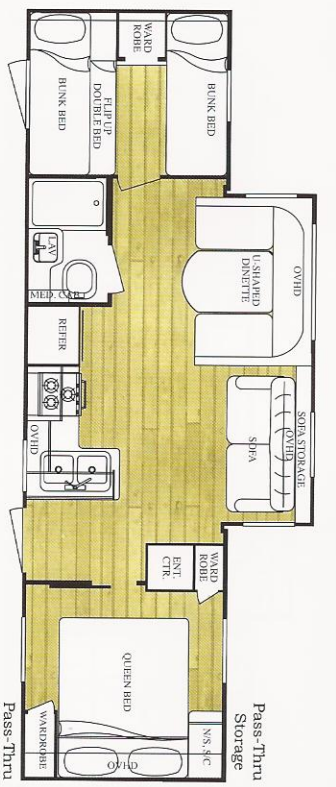
291 FKS



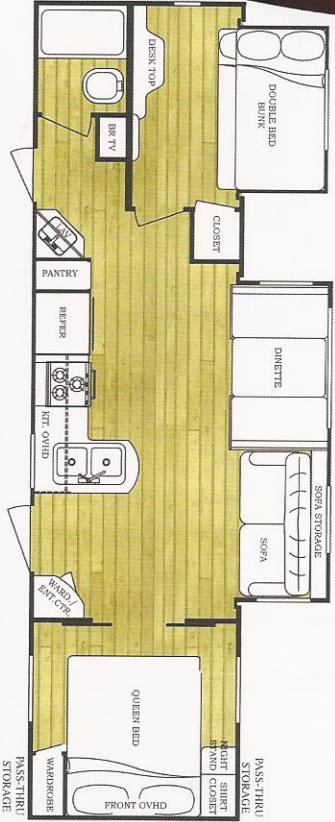
295 BHS



296 RBW



298 DBS



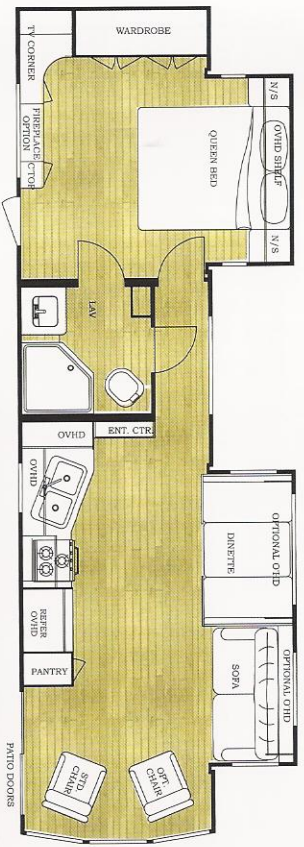
30 TBR



32 TBR

# Lodge series floor plans

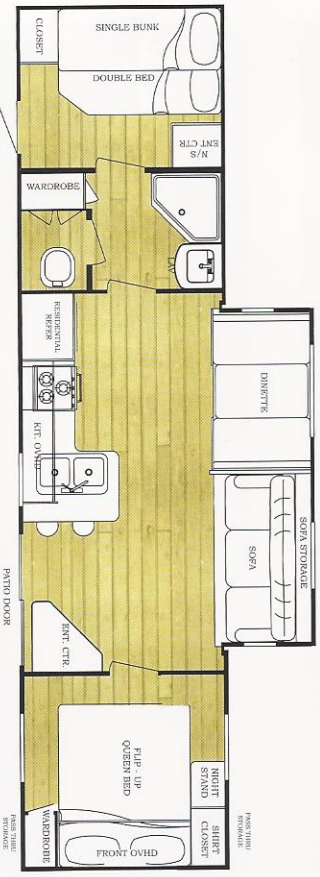
Gulf Stream's Lodge Series Travel Trailers include sliding glass patio door, 14 cubic foot refrigerator, 36 - 40 foot models have detachable front hitch. All Park Series have RV toilets and holding tanks.



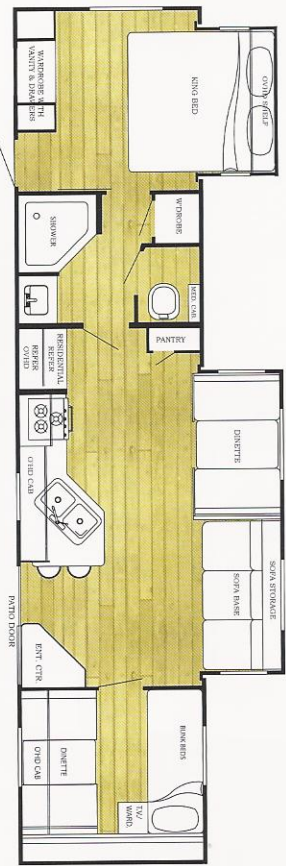
**34 FLS**



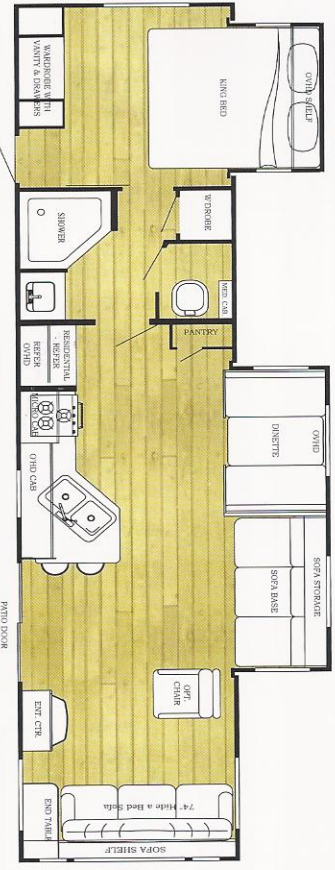
**35 FKS**



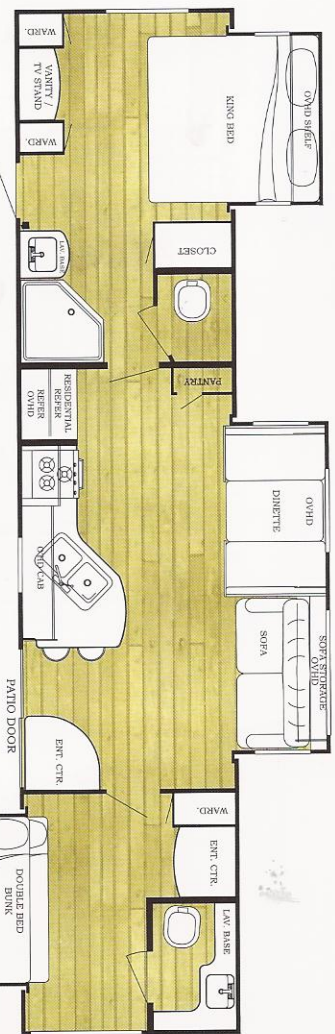
**351 PBS**



**36 FRS**



**36 DLS**

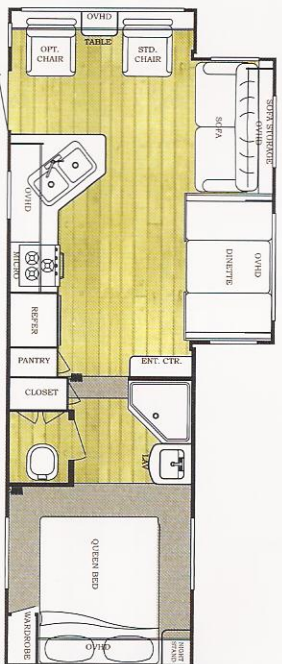


**40 TBS**

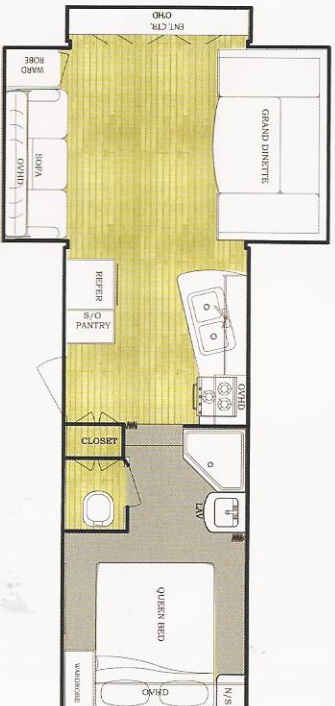
*fifth wheel series floor plans*



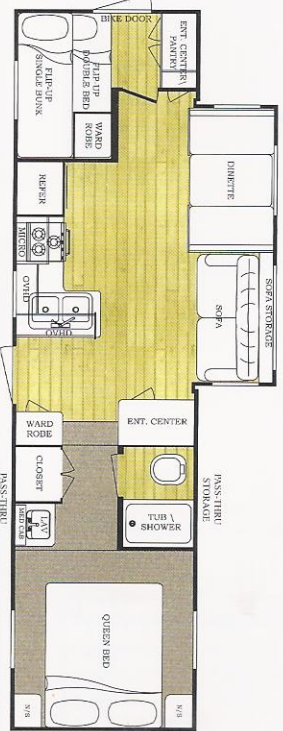
**24 FTBS**



**245 FBW**



**27 FRLR**



**28 FWBH**

*travel trailer specifications*

Model	20 BHL	23 DBL 23 BWL	24 BHL	24 RKL	259 BHL	261 RLS	275 FBL	275 FSL	28 RLR	29 SBW	291 FKS	291 SBW
Overall Length, Appx.	23'9"	25'11"	25'9"	27'11"	28'11"	30'7"	29'10"	29'10"	32'5"	32'5"	34'5"	34'4"
Overall Height w/ AC Appx.	9'11"	10'1"	9'11"	10'9"	10'9"	10'9"	9'11"	10'1"	10'9"	10'9"	10'9"	10'9"
Net Carry Capacity (NCC) (Appx. Lbs.)	2,046	3,127	3,328	2,257	1,891	4,523	2,676	2,196	4,060	4,018	3,411	3,895
Hitch Weight(Appx. Lbs.)	480	830	560	840	700	650	690	750	1,010	730	880	1,060
Total Dry Weight (Appx. Lbs.)	3,904	4,703	4,232	5,683	5,809	6,307	5,014	5,554	7,101	6,972	7,629	7,325
Fresh Water Capacity	55 Gal	55 Gal	55 Gal	55 Gal	55 Gal	55 Gal	55 Gal	55 Gal	55 Gal	55 Gal	55 Gal	55 Gal
Waste Water Tanks	78 Gal	78 Gal	78 Gal	78 Gal	78 Gal	78 Gal	78 Gal	78 Gal	TBD	117 Gal	78 Gal	78 Gal
Dual LP Bottles	20 Lbs.	20 Lbs.	20 Lbs.	20 Lbs.	20 Lbs.	30 Lbs.	30 Lbs.	30 Lbs.	30 Lbs.	30 Lbs.	30 Lbs.	30 Lbs.
Furnace Btu's.	25,000	25,000	25,000	25,000	25,000	25,000	25,000	25,000	30,000	30,000	30,000	30,000

Model	296 RBW	295 BHS	298 DBS	30 TBR	32 TBR	34 FLS	35 FKS	351 PBS	36 DLS 36 FRS	40 TBS
Overall Length, Appx.	32'11"	32'4"	32'11"	34'6"	35'8"	34'4"	35'2"	35'9"	35'7"	36'2"
Overall Height w/ AC Appx.	10'9"	10'9"	10'9"	10'9"	10'9"	10'9"	10'9"	10'9"	10'9"	10'9"
Net Carry Capacity (NCC) (Appx. Lbs.)	4,278	4,266	4,212	3,739	3,300	3,434	2,607	3,845	2,827	2,297
Hitch Weight(Appx. Lbs.)	990	720	850	780	850	1,340	1,020	900	1,120	1,200
Total Dry Weight (Appx. Lbs.)	6,872	6,614	6,798	7,201	7,850	8,066	8,573	7,215	8,453	9,063
Fresh Water Capacity	55 Gal	55 Gal	55 Gal	55 Gal	55 Gal	N/A	N/A	N/A	N/A	N/A
Waste Water Tanks	117 Gal	78 Gal	78 Gal	78 Gal	78 Gal	78 Gal	78 Gal	78 Gal	117 Gal	148 Gal
Dual LP Bottles	30 Lbs.	30 Lbs.	30 Lbs.	30 Lbs.	30 Lbs.	30 Lbs.	30 Lbs.	30 Lbs.	30 Lbs.	30 Lbs.
Furnace Btu's.	30,000	30,000	30,000	30,000	30,000	30,000	30,000	30,000	30,000	30,000

*fifth wheel specifications*

Model	24 FTBS	245 FBW	27 FRLR	28FWBH
Overall Length, Appx.	27'5"	28'3"	30'11"	31'4"
Overall Height w/ AC Appx.	11'3"	11'3"	12'	12'
Net Carry Capacity (NCC) (Appx. Lbs.)	2,183	1,982	TBD	4,483
Hitch Weight(Appx. Lbs.)	1,600	1,890	TBD	1,800
Total Dry Weight (Appx. Lbs.)	6,417	6,908	TBD	7,477
Fresh Water Capacity	55 Gal	55 Gal	55 Gal	55 Gal
Waste Water Tanks	78 Gal	78 Gal	78 Gal	117 Gal
Dual LP Bottles	30 Lbs.	30 Lbs.	30 Lbs.	30 Lbs.
Furnace Btu's.	25,000	25,000	25,000	30,000

With Hitch attached \* - 39'11"  
 \*\* - length is 38'7"  
 \*\*\* - length is 38'7"  
 \*\*\*\* - length is 40'6"



# CONQUEST

BY GULF STREAM®

All Weights Shown are in Dry Condition, without options or fluids. Please add for additional options and features. Consult the weight tag inside kitchen cabinet and your tow vehicle owners manual for more information.

	Gulf Stream	Other Brands
• Hard-wired Slide Rooms	✓	
• Contemporary White Doors and Windows	✓	
• Large Double Door Refrigerator w/ Thermostat	✓	
• Gas Water Heater w/ Auto Ignition	✓	
• Pass-Thru Storage on Most Models	✓	
• 13,500 BTU Air Conditioner	✓	
• Decorator Mini-Blinds Standard!	✓	
• Color Coordinated Awning	✓	
• 30" Wide Entry Door w/ Window	✓	
• Hardwood Mortise & Tenon Cabinet Doors	✓	
• Carousel Microwave Oven	✓	
• E-Z Store Sofa - Easiest Access Around!	✓	
• Large Storage Chest Behind Sofa Slides	✓	

	Gulf Stream	Other Brands
• TV Antenna w/Booster	✓	
• Gas Bottle Cover	✓	
• Patio and Hitch Lights	✓	
• Large Residential Style Kitchen Sink	✓	
• Double Easy-Open Entry Steps	✓	
• Deluxe AM/FM Stereo CD with DVD & 5 Spkrs (CD Only on Lite Models)	✓	
• Water Heater Bypass	✓	
• Extra TV Jack w/Tray in Bedroom	✓	
• Systems Monitor Panel	✓	
• In-Floor Seamless Ducted Heat (frees up more cabinet space)	✓	
• Power Range Hood w/Light and Fan	✓	

	Gulf Stream	Other Brands
• Queen Bed w/Innerspring Mattress (most models)	✓	
• Wall Mounted Light Switches Incl. Bathroom	✓	
• Designer Bedspreads	✓	
• LP Leak Detector	✓	
• Smoke Detector	✓	
• Space Saver, Under Floor Water Tank - 49 Gal.	✓	
• Power Roof Vent in Bath	✓	
• Deluxe Wallpaper Border in Livingroom	✓	
• Cable TV Hook-Up	✓	
• Bed-Lift Pistons (where applicable)	✓	
• Rain Guard Gutter Rail w/ Down Spouts	✓	
• Insulated Exterior Storage Compartments	✓	

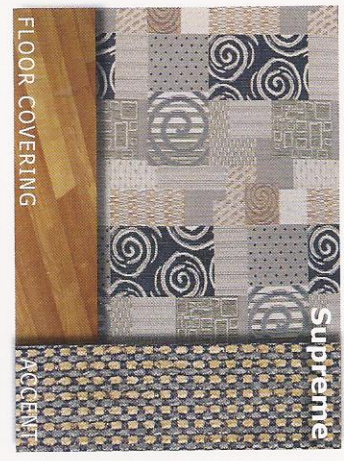
	Gulf Stream	Other Brands
• All Walls Mounted ON Floors (not next to them)	✓	
• Decked One-Piece Roof Featuring A 12-Year Warranty	✓	
• 2 x 4 1/2" Residential Style Bowed Roof Truss System (strongest construction available) with ducted air conditioning option	✓	
• Sidewalls are Screwed to Ceiling and Floor, and Strapped with Strong Galvanized Steel Straps	✓	
• Dadoed Belt-Rail Wall Construction, Combined with Galvanized Steel Straps & Screws For Unmatched UNI-BODY Strength	✓	
• 5/8" Floor Decking Glued & Screwed	✓	
• 30" Wide Entry Door	✓	
• Hand-Cut & Glued Fiberglass Insulation	✓	
• Clear Span Power Slide-Out Rooms w/Steel Header	✓	
• Solid Box & I-Beam Heavy Duty Steel Frames	✓	

## supreme package

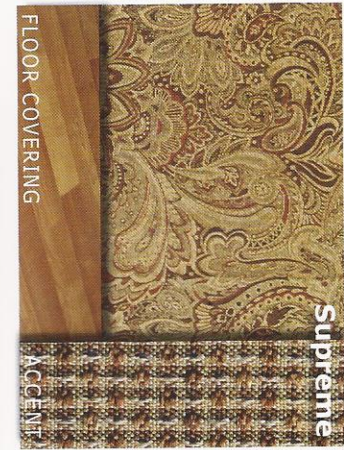
- Raised Hardwood Cathedral Overhead Doors
- 2-3 Fluorescent Lights
- Pleated Window Shades
- Pot and Pan Drawer Under Dinette
- Residential Style Interior Doors
- Upgrade Medicine Cabinet
- Plush Carpeting
- Deluxe Fabrics
- Upgrade Bedroom Décor
- Deluxe Bathtub Surround
- Outside Scare Light
- Deluxe Entry Door
- Deluxe Graphics

## popular options

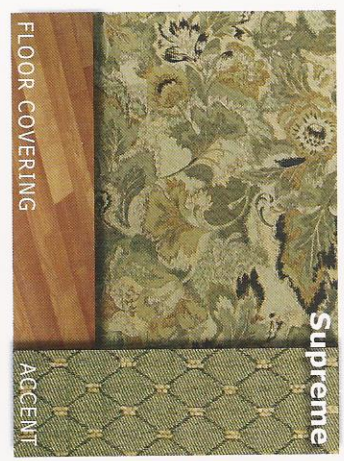
- 4 Door Slide Out Overhead Cabinet
- Tub ipo Shower Pan
- Fiberglass "Slick Side" Exterior Roof Rack and Ladder
- Hide-A-Bed Sofa (select slide-outs)
- Spare Tire, Carrier and Cover
- Bright Trim Package: wheel trim & polished bumper cover, swing away assist handle
- Outside Shower
- Sunroom Option w/ Table, 4 Chairs, 2DR Slide Out Over-Head Cabinet
- Crank Down Stabilizer Jacks
- Electric Hitch Jacks (5th wheels)
- Self Cleaning Shower Door
- Ceiling Paddle Fan (fifth wheels)
- Fantastic Attic Fan



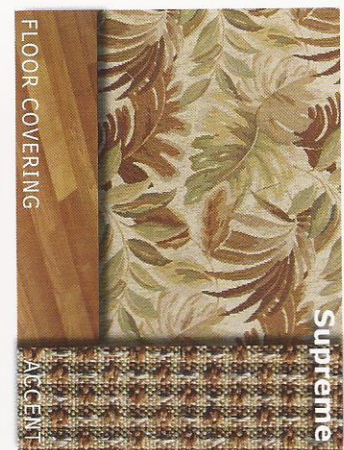
Twilight Blue



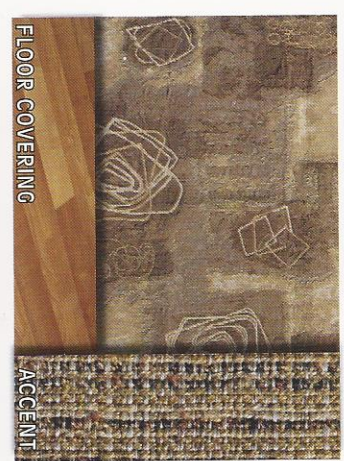
Chianti Burgundy



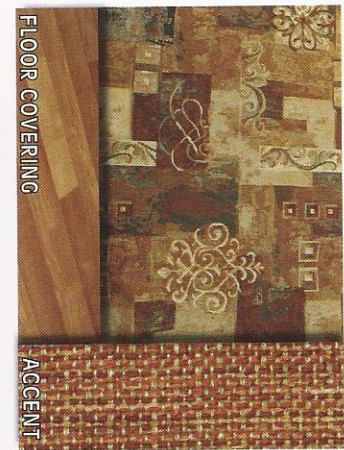
Fawn



Rainforest Tan



Pebble Tan



Rustic Burgundy

www.gulfstreamrv.com



# GULF STREAM COACH, INC.

Family owned for 25 years, Gulf Stream Coach is a leading manufacturer of high quality and high value RV products that are distributed through a partnership of independent dealers who are focused on exceeding customer expectations.

Located in the heart of the Amish country, the Gulf Stream complex covers over 200 acres and includes more than 1.5 million square feet of state-of-the-art manufacturing facilities fostering the most creative and innovative culture in the RV industry.

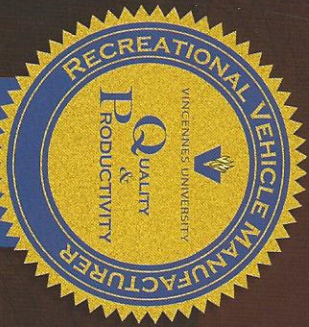
Gulf Stream has been awarded the prestigious Platinum Recreational Vehicle Manufacturer Quality & Productivity Award multiple times in recognition of our commitment to producing quality recreational vehicles.

Your family and friends will feel safe and comfortable in a Gulf Stream travel trailer or fifth wheel. Compare and you will see the exceptional value!

## 2-YEAR Warranty!

In addition to our standard one year warranty, Gulf Stream Coach, Inc., offers an exclusive 24 month warranty on structural components. In addition, major component manufacturers are providing 24 month warranties on their products installed in Gulf Stream units such as refrigerators, antenna, furnace, water heater, air conditioner, awning, range, microwave and more. See the official written Gulf Stream Coach, Inc., Warranty for details.

\*For purposes of this warranty, "structural components" shall be limited to the structure of the side walls, front and back walls, roof and floor.



2004  
GOLD AWARD

2005  
GOLD AWARD

2006  
PLATINUM AWARD

2007  
PLATINUM AWARD

**24 MONTH WARRANTY ON STRUCTURAL COMPONENTS\***

†Your Gulf Stream warranty under normal use against defects in material and workmanship in construction and original components. For the full details of the side walls, front and back walls, roof and floor, test drive and review a current model at your nearest Gulf Stream dealer. See the official written Gulf Stream Coach, Inc. Warranty for details. © 2002 Gulf Stream Coach, Inc., Naparnee, Indiana U.S.A. 1008

Post Office Box 1005  
• Your GULF STREAM COACH DEALER •  
NAPARNEE, IN 46550

Jerry's Trailers & Campers, Inc.  
2601 South 13th St.  
Norfolk, NE 68701  
(402) 371-1306  
www.jerrystrailers.com

For more information and available options, contact your local Gulf Stream dealer, www.gulf-streamrv.com or Gulf Stream Coach, Inc. Gulf Stream Coach, Inc., reserves the right to make changes in prices, colors, materials, components and specifications and to discontinue models at any time without notice or obligation. Gulf Stream Coach, Inc., assumes no responsibility for any error in type or print reproduction of specifications or floorplans in this brochure. Photographs may show equipment or items that are optional and are not included in the purchase price of the coach. Test drive and review a current model at your nearest Gulf Stream dealer. © 2002 Gulf Stream Coach, Inc., Naparnee, Indiana U.S.A. 1008