

# BIGHORN

BY HEARTLAND



The King of the Mountain



AIR  
MATTRESS

## A New Level of Luxury

*The stunning new BIGHORN by Heartland Recreational Vehicles is nothing short of spectacular - in both its luxurious interior appointments and outstanding design concepts. Featuring real hardwood cabinets, including stiles, oil-rubbed bronze hardware and lighting, magnificent furnishings, flush-floor slide-outs and an abundance of interior and exterior storage space, the BIGHORN is truly a fifth wheel that is taking affordable luxury to the next level.*



## The King of the Mountain

*You'll appreciate the hand-crafted touch found in each BIGHORN, like the stately slide-out fascia moldings that surround every slide room.*

## Comfortable Living

Comfortable Euro-recliners separated by a hardwood coffee table highlight this spacious BIGHORN living room. A 26" LCD flat screen TV with home theatre system provides high quality entertainment, while the desk and roomy countertop offer a great place to work. Decorative glass inserts add a residential touch to the room, while hard-sided window valances frame the oversized windows which provide an excellent view of your surroundings.



*Euro-recliners optional*



The LCD TV swivels out from the cabinet for increased viewing angles, while the space behind the TV features shelving for all of your movies and music.

The hardwood dinette table features a pull-out extension and features storage inside, as well as the dinette chairs, providing a great place to store games or valuables.





# BIGHORN

The kitchen in the 3055 is highlighted by name brand appliances, solid-surface countertops that feature a 10-year warranty, elegant crown molding, and an abundance of base cabinet and overhead storage areas. The waterfall edge on the true solid surface countertop is a high-end feature normally reserved for motorhomes.



The hardware in the BIGHORN is oil-rubbed bronze, just one of many luxurious features that set this coach apart from the crowd.

Every BIGHORN features a mirrored entry closet that houses all of the coaches mechanical systems and switches, which are out in plain sight in most competitive coaches. This closet offers a great place for storing jackets and other items such as umbrellas or cleaning supplies.





## Storage Galore!

*You'll never lack for storage space in a BIGHORN fifth wheel! That's because we listen to our customers and maximize every possible square inch of interior space. With all of this storage space, food preparation is a breeze and you will never have to compromise on what you choose to serve to your family or guests. That's what true, extended stay camping is all about - enjoying the luxuries of home - without compromise.*



## Full Extension!

*BIGHORN's steel ball-bearing drawer guides not only provide the smoothest possible operation, but are able to hold more than 30 lbs. as witnessed by this cinder block! You will not find any of the cheap, import drawer guides like the competition offers in our coaches! These deeper drawers are designed to fully extend past the cabinet faces, so you will not have to scrape your knuckles trying to get to the back of them. It's simply the best drawer system in the industry!*



*The half-time convection microwave oven provides you with the ability to crisp baked goods, including making pies and cakes.*



*The deep, stainless-steel kitchen sink features built-in sink covers and a flexible sprayer faucet.*



## Designer Kitchens

The stunning island kitchen in the BIGHORN model 3670 offers a tremendous amount of great overhead and base cabinet storage! All stained hardwood cabinetry throughout really sets this kitchen apart from other "pretenders", while an abundance of upgraded, solid-surface countertops with waterfall edge means you will never lack for meal preparation space again.



*BIGHORN features four elegant interior decors.*



*Camel Suede*



*Harvest*



*Emerald Patina*



*Majestic Blue*



## Spaciousness

*The living room in the BIGHORN model 3670 features a wide-open feel with large, over-sized windows and elegant furnishings, making it the perfect retreat from the world outside. The decorative lighting package adds a touch of class, as do the decorative glass inserts in the overhead doors.*

**BIGHORN**



TV Optional

# BIGHORN™

## Livability

*The residential feel of the BIGHORN bedroom suite is accomplished by features such as our custom-built hardwood dresser with six oversized drawers and shelf storage. In addition, there is a large overhead cabinet with decorative glass inserts and a built-in TV cabinet.*



*The large lav base and mirrored medicine cabinet provide great storage opportunities, while the separate commode room features both heat and A/C vents, as well as a porcelain commode and built-in overhead storage.*

*The large one piece, neo-angle shower features a glass door, a hand-wand spray head, and overhead skylight.*



# Fit For A King!

Whether it's retreating from a long day or just lounging around, the BIGHORN king bed offers incredible comfort in a very elegant setting. Framed by stunning fascia and matching headboard, the bed slide offers dual nightstands and reading lights, as well as two windows for improved cross ventilation. This luxurious bedroom offers an abundance of wardrobe and drawer space, complemented by deep shelves.



The BIGHORN model 3670 is a "side aisle" layout, which offers one of the largest private bath designs in the industry. Accessible from the hall or the bedroom, this private bath is larger than most residential bathrooms.

On select BIGHORN models, you'll find a large linen closet, designed to house a stackable washer/dryer.





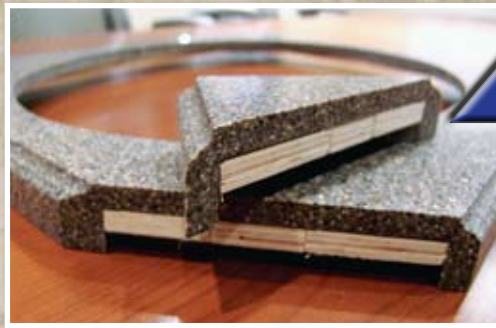
*A real porcelain sink - not cheap plastic like the others.*



*A nicely finished clothes hamper can also double as a place to store shoes, boots or other items.*



*Speakers in the bedroom allow you to listen to the TV or stereo.*



## TRUE SOLID-SURFACE.

BIGHORN's HANEX™ TRUE RESIDENTIAL SOLID SURFACE Counter Tops increase the usability, beauty and value of our coaches. The advanced blend of natural materials and pure, acrylic polymer is formed over a strong plywood base, providing design versatility and long-term performance to our customers. Hanex™ is one of the toughest counter tops in the world that is both durable and **RENEWABLE**.

**RENEWABLE** means it is the same consistency through and through and if scratched or chipped, can be easily repaired so that it looks like new!

The competition on the other hand... offers only a thin layer of FIBERglass, adhered to lesser quality particle board material that disintegrates when it gets wet. The FIBERS of these counter tops tend to stick out of the bottom edges and are painful to the touch.



## vs. THIN FIBERGLASS.



BIGHORN's residential designs show well in the this 3055RL entertainment area where you'll find a large work desk with built-in grommet and plenty of leg room; a fireplace with custom hardwood mantle; a nice sized window; roomy overhead and large LCD flat screen TV that can swivel out for improved viewing angles and elegant slide room fascia.

## The Largest Storage in It's Class!

*BIGHORN's new drop-frame design provides for over 140 cubic feet of the cleanest pass-through storage ever accomplished in a fifth wheel. Featuring Heartland's durable vinyl diamond-plate finish that keeps your valuables in place during transit, this extra-large compartment can house all of these storage bins and more!!*



*Every BIGHORN now comes standard with these sturdy steel tie-downs in the exterior storage compartment – excellent for securing your gear during travel.*

*With electrical outlets and video hook-ups, there's room in here for a mini-fridge, a TV and other electronics for access under your awning at a tail gate or when just sitting around the campsite.*

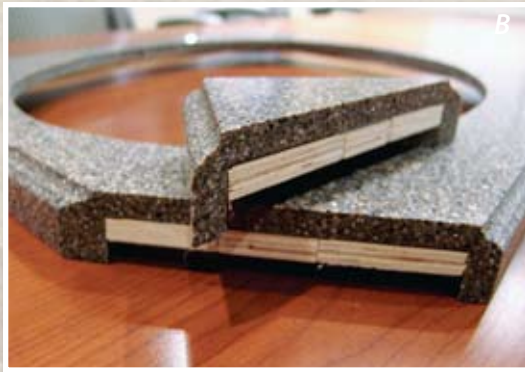


## Universal Docking Center

*One of Heartland's most famous innovations, this docking center holds all of the coach's system hook-ups including the satellite; phone; cable; city water fill; black tank flush; exterior hot and cold shower; winterization valves, and all-tanks pull handles (no more crawling under slide-outs to reach the handles!).*

*Trail-Air's EQUAL-FLEX rubber-cushioned equalizer suspension system is standard on every BIGHORN and provides an incredibly smooth ride.*





A) Upgraded Antenna for Better Reception. B) True Solid-Surface Counter tops with Waterfall Edging.  
 C) Strong 12" I-Beam Frames on all Quad Slides. D) Brand Name SAMSUNG™ Home Theatre/Stereo System.  
 E) Electric Outlet at the Awning for Light Strings - Also, Electric Awning Available as an Option.



**HEATED AND ENCLOSED UNDERBELLY**  
 This one-piece ABS underbelly is fitted and attached to the entire length of the fifth wheel, providing a thermal barrier that is easily removed for access to the underbelly. The underbelly area is insulated and heated from the furnace to help protect against the elements.



The optional HITCH COVER provides not only a great look - but improved aerodynamics and fuel economy.





**STUNNING FRONT CAP DESIGN**

*The fiberglass front cap for the BIGHORN is all new with sleek radiuses and design lines flowing through it. The Patented turning radius design is perfect for short-bed, extended-cab trucks!*



**ONE-PIECE FIBERGLASS SHOWER WITH SEAT**

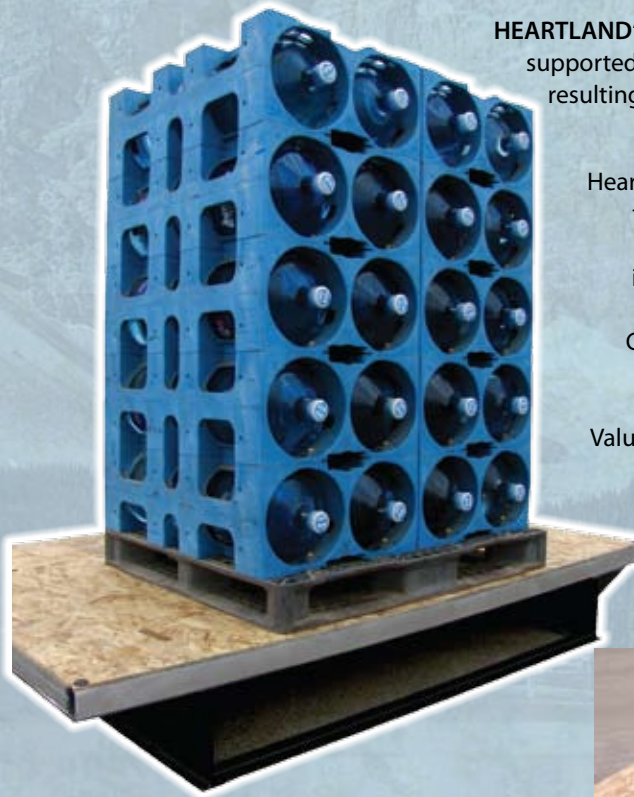
*Bighorn features a roomy neo-angle one-piece fiberglass shower with extra support built into the floor with convenient seat and flex sprayer.*

# LAMINATED FLOOR SYSTEM



BIGHORN's LAMINATED Floor System is one of the **STRONGEST FLOORS** in the industry! Featuring sturdy 2.5" Aluminum Framing; thick Block Foam Insulation; One-Piece Seamless Decking and a Thermo-Board Luan on the bottom. All of this is Laminated together for Maximum Strength and Insulation R Value - virtually eliminating flex in the floor!

**HEARTLAND's LAMINATED Floor Construction** easily supported over 1,800 lbs. of Water Jugs in one spot - resulting in less than 1/4" of flex!!



Heartland builds recreational vehicles with as many residential features and construction methods as possible and we are excited to introduce this 3" Laminated Floor System in our top three lines of fifth wheels. Choose Heartland for Maximum Strength; Maximum Insulation Value; and Minimal Flex!!



**HEARTLAND's 3" LAMINATED FLOOR**

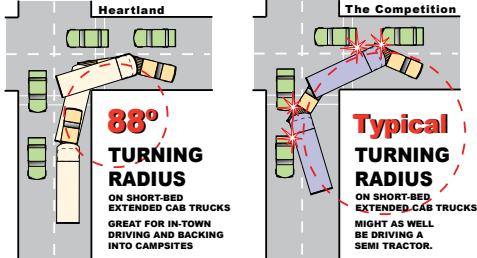
**Traditional RV Floor Construction** often flexes in the middle of the coach - because that's where the holding tanks are located and there is no steel frame support under the lumber.



**NO MORE FLEX!**  
**Competition's Non-Laminated Floor**

# SUPERIOR CONSTRUCTION AND DESIGN TRANSLATE INTO A SUPERIOR VALUE!

**ACHIEVE AN 88° TURN!**  
**IN A SHORT-BED, EXTENDED CAB TRUCK**  
**ONLY IN A HEARTLAND!**



**PATENTED!!**  
**DON'T ACCEPT ANY IMITATIONS - IF YOU CAN'T TURN 88° IT'S NOT A HEARTLAND!**

*Perfect for Short-Bed, Extended-Cab Trucks*



**HEARTLAND**  
 RECREATIONAL VEHICLES, LLC.

**2" THICK SIDEWALLS!**

**Lightweight ALUMINUM**

Just an 1/8" thick foam cup protects your hand from scalding hot coffee... imagine what nearly 2" of block foam does for your Laminated Heartland Sidewall!

Double Welded, Fully Laminated Sidewall Construction

## ZERO° TESTED!

Heartland 5th wheel Construction has been subjected to rigid testing in the famous DOMETIC™ extreme temperature testing chamber where it passed with flying colors! The chamber is set to 0° to test the unit's heating efficiency, followed by being set at 100° to test its cooling efficiency. With our thick 2" laminated walls; enclosed and heated underbelly; and insulated floor - the interior of the Heartland coach remained warm and comfy during the sub-freezing test and nice and cool during the heat test!



For more details, visit our web site:  
[www.HEARTLANDRVs.com](http://www.HEARTLANDRVs.com)



Yet another BIGHORN smart design - the air-mattress hide-a-bed sofa offers the ultimate in comfort, as well as a deep drawer that is perfect for storing throw blankets and other items.

**HAND CRAFTED CABINERY**

- All **HARDWOOD** Cabinetry Throughout (Including Stiles)
- Amish-Crafted Natural Hardwood Cabinet Doors and Drawers
- All Cabinet Frames are Pre-Drilled, and Screwed Together - not stapled
- Baltic Birch Drawer Construction (Real Wood)
- Deluxe **Ball-Bearing** Drawer Guides

**PATENTED Front Cap and Frame Design -  
SPECIALLY Designed and Engineered For  
SHORT BED TRUCKS**

- Allows for 30%+ Increased Turning Radius on Short Bed, Extended Cab Trucks
- Truly Unique Aerodynamic Profile

**Universal Docking Center -****For the Next Generation of 5th Wheels :**

- 12 Volt Light
- Exterior Shower with Hot & Cold Water
- Black Tank Flush System Hook Up
- City Water Hook Up
- Shielded RG-6 Coaxial Cable Hook Up
- Satellite Hook Up (Roof OR Tri-Pod)
- Telephone Hook Ups
- All Tanks Pull Handles
- Winterization Valves

**LARGEST EXTERIOR STORAGE IN IT'S CLASS!**

- Offering Over 145 Cubic Feet of Storage!
- Durable **Vinyl Diamond** Flooring
- Large Insulated Access Doors
- Unobstructed Pass-Through Design
  - No Heating or Plumbing Hanging Down
- 12V Trunk Lights

**BEDROOM**

- Large **Walk-In Front Wardrobe** with Built-In Shoe Storage and **W/D Prep**
- **King Size Bed** w/Underbed Storage Std. (most models)
- Two Windows in Slide for Better Air Flow
- Large Dresser w/6 Large Drawers & O.H.
- 6'-4" Bedroom Ceiling Height Throughout
- Level Floor between Bath and Bedroom
- Adjustable Reading Lights Over Bed
- Deluxe Headboard Design

**WALL CONSTRUCTION**

- Laminated Fiberglass Sidewalls
- Double-Welded Aircraft Quality Aluminum SUPERSTRUCTURE Cage Construction
- Drip Rail w/Down Spouts
- Deluxe Exterior Awning

**STANDARD WINDOW FEATURES**

- Dark Tinted Safety Glass Windows with UV Inhibitor
- Huge Panoramic Rear Bay Window
- Huge Panoramic Windows in Dinette
- Ventilation Slider Side Windows
- Light at Entry Step
- Brushed Aluminum Rear Ladder

**ROOF CONSTRUCTION**

- 5" Welded Aluminum Attic Trusses
- Walkable Roof Decking (3/8"), Glued and Screwed in Place
- One-Piece Seamless EPDM Rubber Roof
- Radius Metal Roof Cap
- R-14 Formaldehyde Free Insulation
- Moisture Ventilation Caps

**LAMINATED FLOOR CONSTRUCTION**

- Strong 3" Aluminum Framing
- Block Foam Insulation
- 5/8" Seamless Decking (No Seams)
- Thermo-Board Luan on the Bottom

**FRAME & LANDING GEAR**

- Strong 10" I-Beam Frame w/Rust Prohibitive Coating (12" on quad slides)
- Electric Landing Gear Jacks
- Spring Loaded Snap Pins
- Heavy Duty Rear Stabilizer Jacks

**TIRES & AXLES**

- Heavy-Duty E-Rated 16" Tires (G-Rated on 3600, 3670 & 3580)
- White Steel Rims
- Spare Tire
- **Equa-Flex™ Suspension System** by Trail-Air with Shocks - for the Smoothest Ride Around
- 6,000 lb. Axles with ULTRA-Lube™ Hubs (**7,000 lb. Axles** on 3600, 3670 & 3580)
- 2 x 12" Brakes
- Monogrammed ABS Fender Skirts

**UNDERBELLY**

- Seamless Corrugated Underbelly Material
- Heated and Enclosed Underbelly
- Heated and Insulated Holding Tanks & Gate Valves
- **Flexfoil Insulation (R-14)**

**PLUMBING**

- Color-Coded **Plumb-PLEX™** Water Lines w/10/25 Year **Warranty**
- Low Point Drains
- Quick Drain for Water Tank
- Quick & Easy Winterization System

## STANDARDS CONTINUED:

### TANK SIZE & LP GAS SYSTEM

- **75 Gallons - Fresh Water**
- 90 Gallons - Grey/45 Gallons - Black
- (2) 30# LP bottles w/Auto Change Over

### POWER

- **60 AMP/12V DC Power Converter**
- 55 Amp Detachable Marine Cord
- Dual Battery Box
- 110V Exterior Electrical Receptacles

### HEATING

- Seamless One Piece In-Floor Heat Duct
- 35,000 BTU Furnace (40M in 3600, 3670 & 3580)
- Heated Stool Room

### COOLING

- Insulated In-Roof Air Conditioning System for Maximum Efficiency
- 15,000 BTU Air Conditioner w/Remote
- Air Conditioned Stool Room

### TOTAL INSULATION VALUES

- Walls - R8 *\*All Formaldehyde-Free*
- Roof - R23 *Insulation.*
- Floor - R27

### MAIN SLIDE ROOM

- 6'-5" Ceiling Height
- Hydraulic Operating System
- Selector Valves for Slide Rooms
- One Piece Steel Header Support

- Double Squeegee Seals w/One-Piece Weather-proof Floor Pan.
- 12V Lights w/Wall Switches
- Cabinets Above Sofa and Dinette
- Hydraulic Manual Override System

### ENTERTAINMENT & CONNECTIONS

- Home Theater Surround Sound System
- Computer Desk Station (most models)
- Black Glass Door Inserts
- **26" LCD TV**

### INTERIOR STANDARDS

- Day/Night Shades (night shades/BDRM)
- Hardwood Entry Handle
- Custom Slide Out Fascias
- **Oil-Rubbed Bronze Lighting Package**

### LIVING ROOM

- Hardwood End Table
- High Back Cloth Rocker/Gliders
- Upgrade Hide-a-Bed Sofa w/ Air Mattress
- **110V Ceiling Fan with Light Kit**
- Decorative Border Tape

### APPLIANCES AND LIGHTING

- 8 Cu.Ft Dometic™ Refrigerator with Hardwood Door Inserts
- 3-Burner Cook Top w/Oven
- **Microwave/Convection Oven**
- Pull Out Sprayer Faucet in Kitchen
- 12 Gal. Water Heater (Gas/Electric DSI)

### MIRRORED CLOSET/UTILITY CENTER

- Exterior Lights Switches
- Coat Hooks
- Water Heater DSI Switch
- Full System Monitoring Panel
- Master Control Slide Switch

### KITCHEN

- **Real Solid Surface Countertops**
- ARMSTRONG™ No-Wax Flooring
- 34" Residential Sized Cabinets
- Toe Kicks (most models)
- Residential Size, Stainless Steel Kitchen Sink w/Sink Covers
- 22" Deep Residential Size Drawers
- **Ball Bearing Drawer Guides**
- Custom Crafted Dinette Table and 4 Chairs w/built-in storage
- Storage in Dinette Table AND Chairs
- Large, Deep Pantry
- Pull Out Sprayer Faucet in Kitchen
- Message Center/Letter Holder
- **Fantastic™ Fan w/Rain Sensor**

### BATH AREA

- 6'-4" Bath/Bed Ceiling Height Throughout
- Armstrong™ No-Wax Flooring in the Bath
- **Porcelain Sink w/Solid Surface Countertop**
- Large Mirrored Medicine Cabinet
- Linen Base Cabinet Storage

### SHOWER

- 1-Piece Fiberglass Shower with Seat
- Elegant Glass Shower Surround
- Domed Skylight Over Shower

### COMMODOE ROOM

- Power Roof Ventilation
- Dual 12V Lights with Soft Lighting Lenses
- Porcelain Commode w/Foot Flush
- Recessed Storage Shelf
- Heat Duct AND Air Conditioning Duct

## OPTIONS:

### EXTERIOR

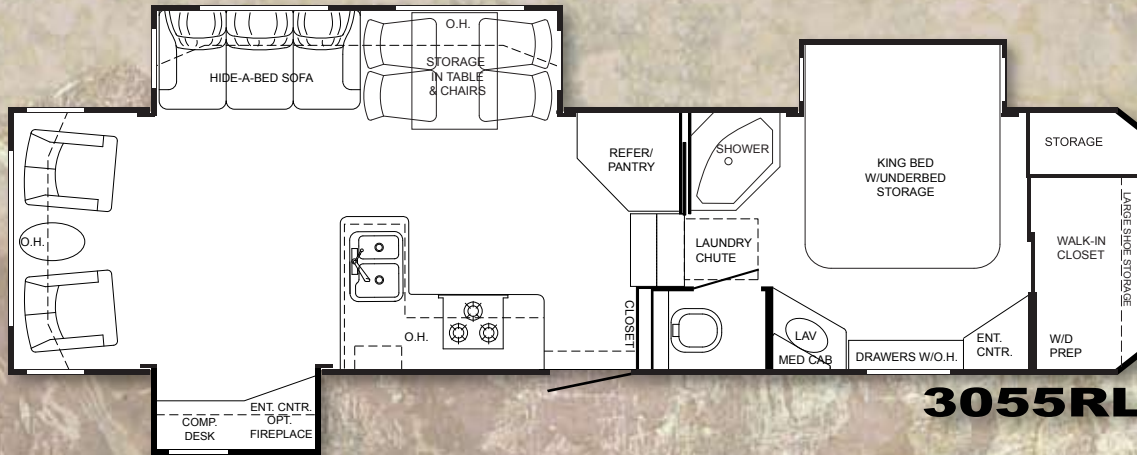
- Aluminum Rims
- Trail-Air Hitch
- High Gloss Gel Coat Exterior
- Slide-Topper Awnings
- Electric Rear Stabilizer Jacks
- Dual Pane Windows
- Generator Prep

### INTERIOR

- Electric Fireplace
- Countertop Extension
- Deluxe Pillow Package
- Leather Euro Chairs
- High-Back Desk Chair
- 19" LCD TV in Bedroom
- Leather Euro Chairs
- Ultra Leather Recliners

- 2nd A/C (Low Profile 13.5 BTU Bdrm.)
- Central Vacuum System
- 10 cu. ft. Refer with Ice Maker
- 12 cu. ft. side-by-side Refer with Ice Maker (where available)
- Fantastic Fan in Bdrm. w/Rain Sensor
- Wiring and Framing for 2nd A/C
- Booth Dinette
- Queen Bed IPO King Bed

# BIGHORN

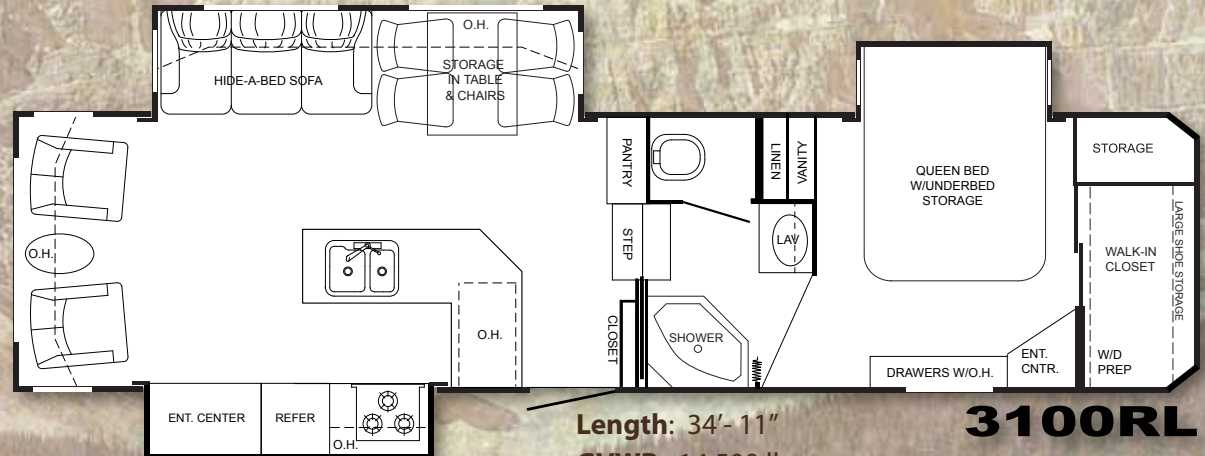


**3055RL**

**Length:** 34'-4"  
**GVWR:** 14,000 lbs.  
**Dry Weight:** 10,735 lbs.  
**Hitch Weight:** 1,995 lbs.

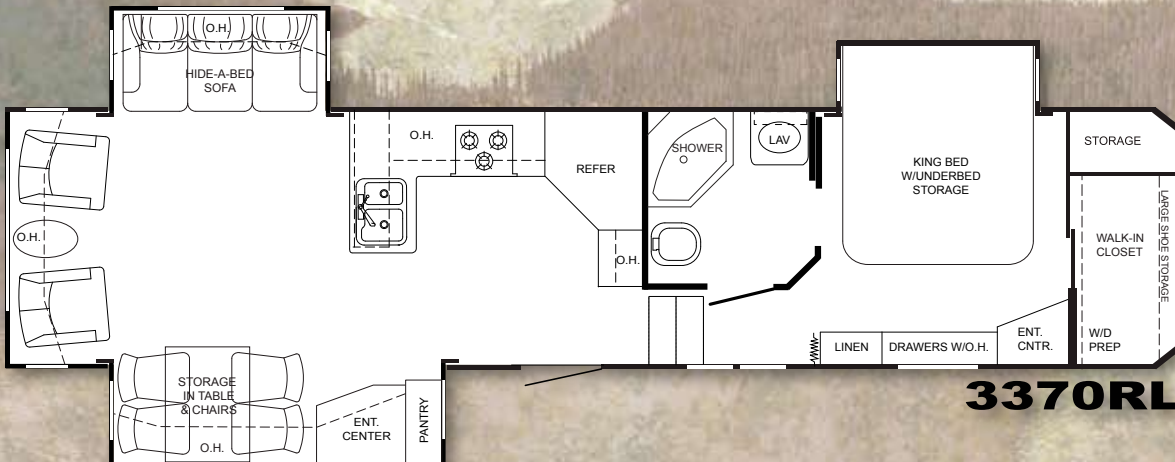
**BIG HORN TYPICAL CAPACITIES:**

<b>Fresh Water:</b> 75 gal.	<b>A/C:</b> 15,000 BTU
<b>Grey Water:</b> 90 gal.	<b>Furnace:</b> 35,000 BTU (40K on Quads)
<b>Black Water:</b> 45 gal.	<b>LP:</b> Two (2) 30# tanks
<b>Water Heater:</b> 12 gal.	<b>Converter:</b> 60 Amp



**3100RL**

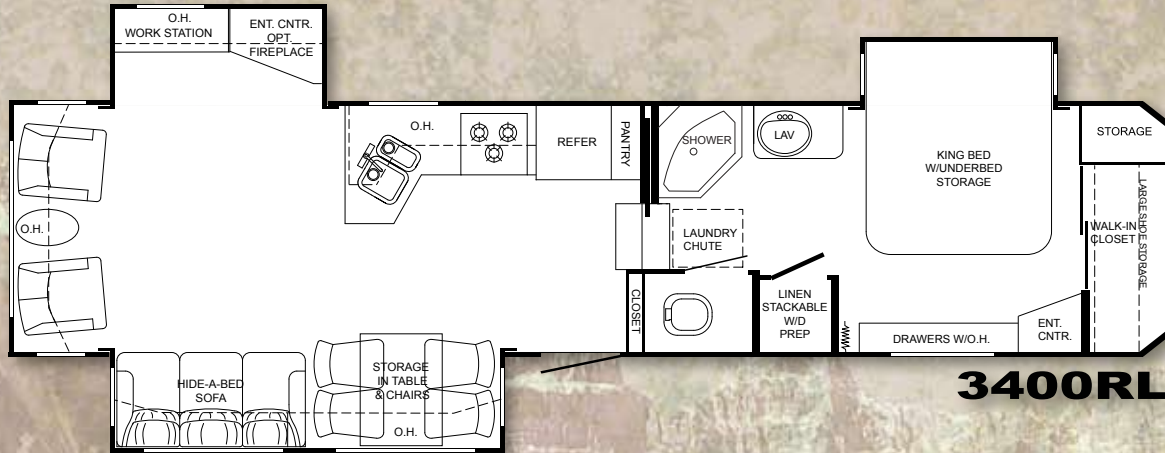
**Length:** 34'-11"  
**GVWR:** 14,500 lbs.  
**Dry Weight:** 11,170 lbs.  
**Hitch Weight:** 2,135 lbs.



**3370RL**

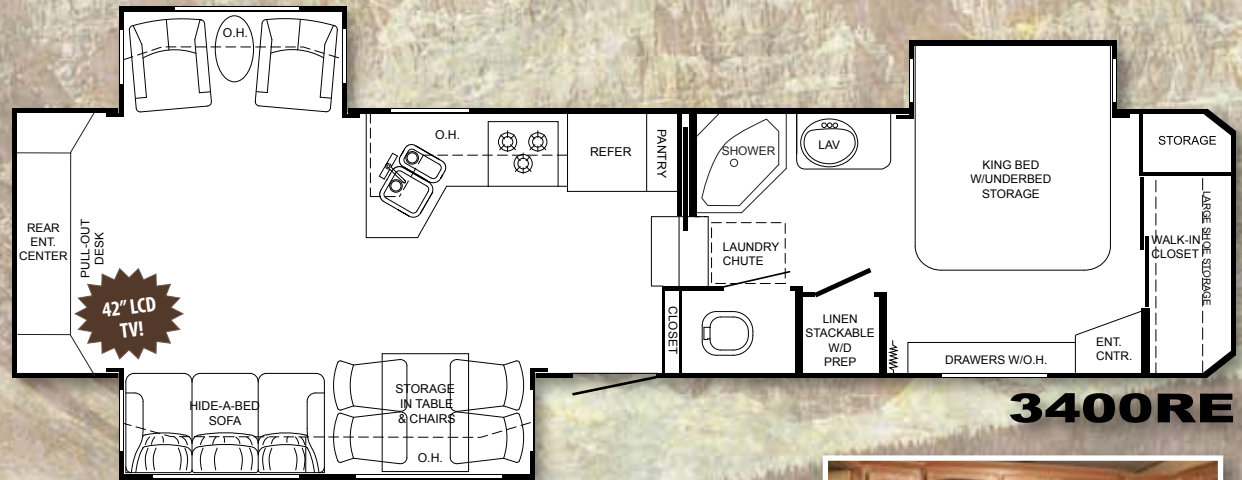
**Length:** 36'-2"  
**GVWR:** 14,000 lbs.  
**Dry Weight:** 10,635 lbs.  
**Hitch Weight:** 2,065 lbs.

# BIGHORN™



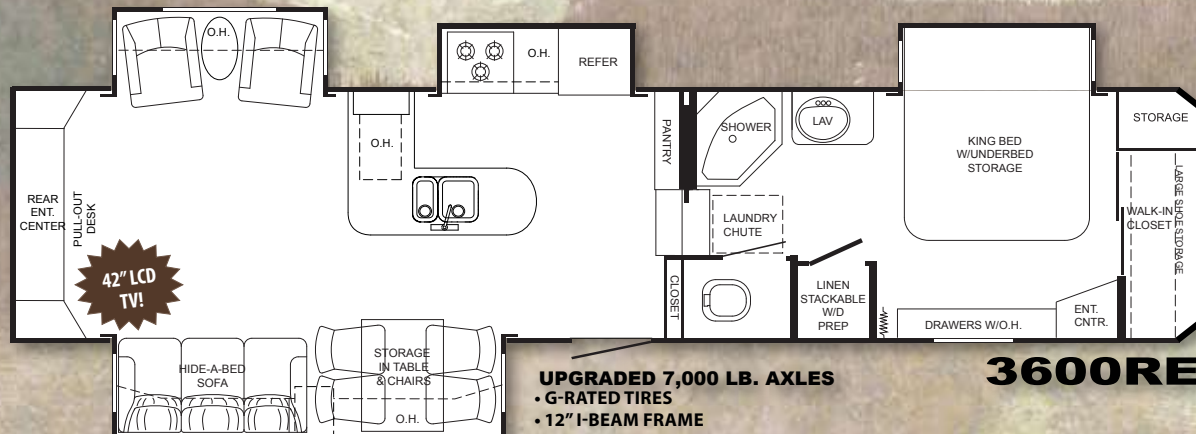
**Length:** 36'-9"  
**GVWR:** 14,600 lbs.  
**Dry Weight:** 11,300 lbs.  
**Hitch Weight:** 2,180 lbs.

**3400RL**



**Length:** 36'-9"  
**GVWR:** 14,800 lbs.  
**Dry Weight:** 11,415 lbs.  
**Hitch Weight:** 1,910 lbs.

**3400RE**



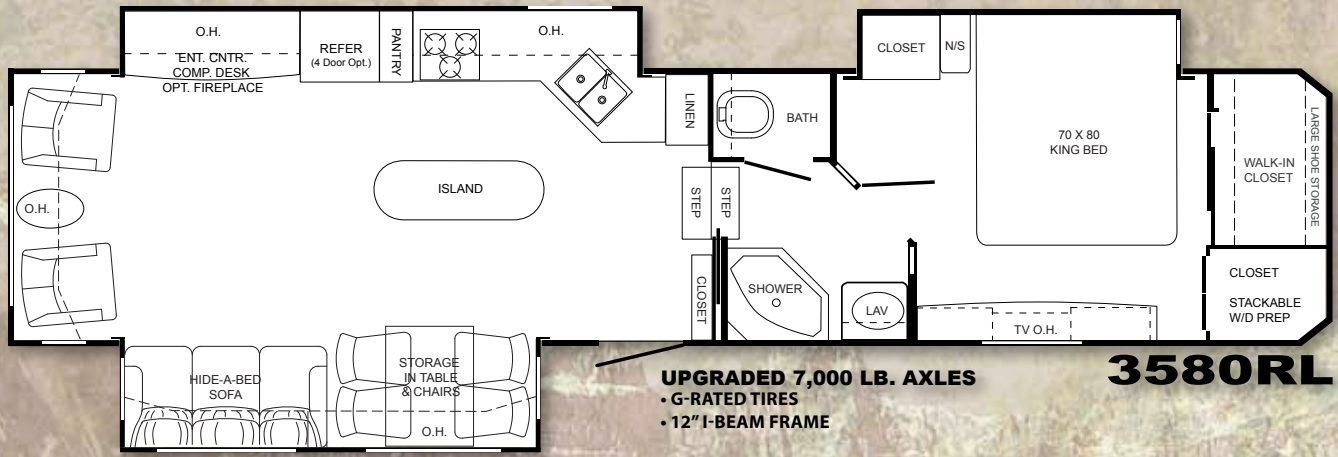
**Length:** 38'-1"  
**GVWR:** 16,000 lbs.  
**Dry Weight:** 11,915 lbs.  
**Hitch Weight:** 2,135 lbs.

**3600RE**

**UPGRADED 7,000 LB. AXLES**  
 • G-RATED TIRES  
 • 12" I-BEAM FRAME



Note: Add 9 inches to overall length for models with extended pin box.

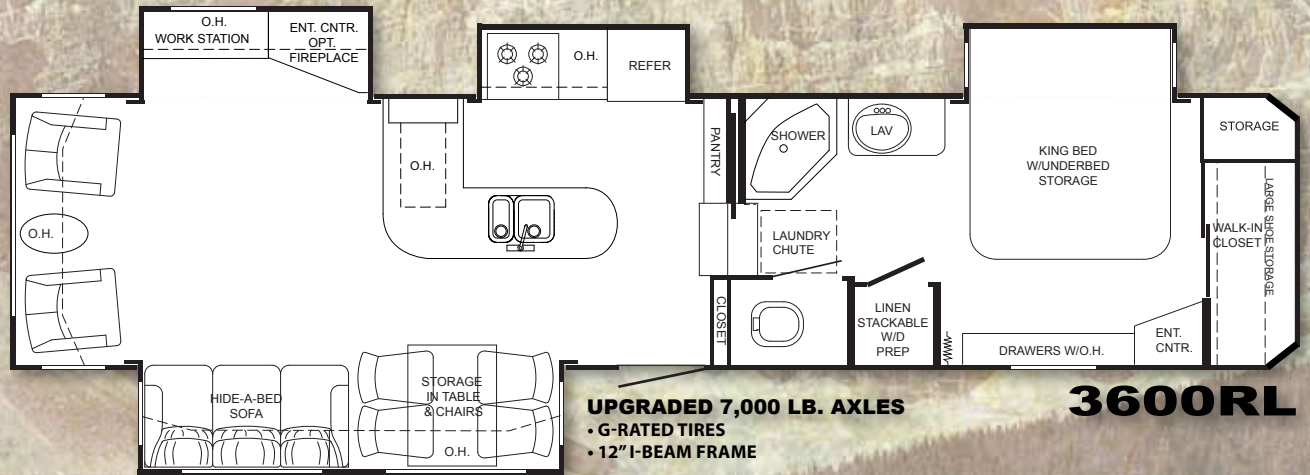


**Length: 38'-8"**  
**GVWR: 16,000 lbs.**  
**Dry Weight: 11,930 lbs.**  
**Hitch Weight: 2,200 lbs.**

**UPGRADED 7,000 LB. AXLES**  
 • G-RATED TIRES  
 • 12" I-BEAM FRAME

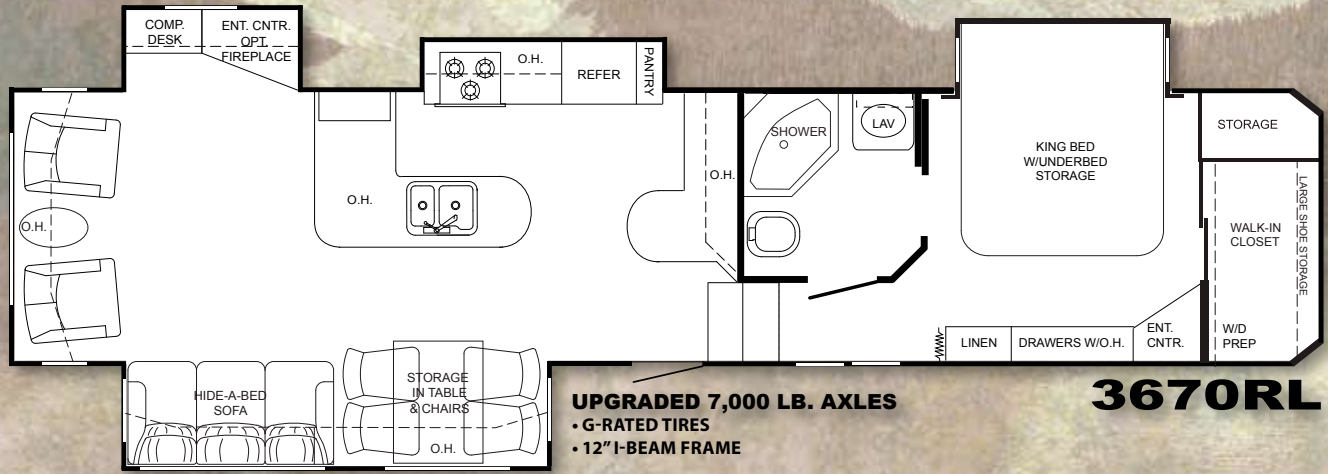
**3580RL**

**Length: 38'-1"**  
**GVWR: 16,000 lbs.**  
**Dry Weight: 11,900 lbs.**  
**Hitch Weight: 2,145 lbs.**



**UPGRADED 7,000 LB. AXLES**  
 • G-RATED TIRES  
 • 12" I-BEAM FRAME

**3600RL**



**Length: 38'-1"**  
**GVWR: 16,000 lbs.**  
**Dry Weight: 11,820 lbs.**  
**Hitch Weight: 2,065 lbs.**

**UPGRADED 7,000 LB. AXLES**  
 • G-RATED TIRES  
 • 12" I-BEAM FRAME

**3670RL**

Maximize Your  
RV Experience...

Share Good Times!

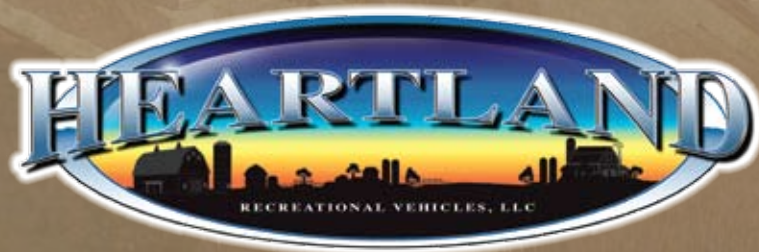


Meet New Friends!

By Joining the



[www.heartlandowners.org](http://www.heartlandowners.org)



Heartland Recreational Vehicles  
1001 All-Pro Drive • Elkhart, IN 46514  
574-262-5992

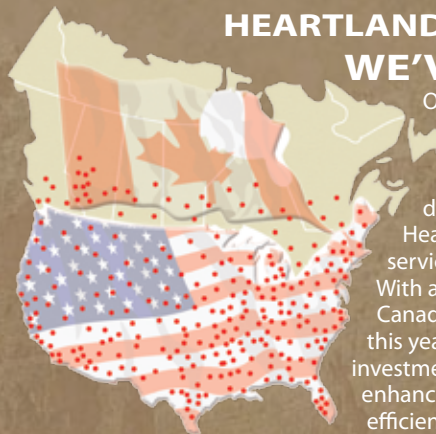
Your Authorized Heartland Dealer:



**VENDOR 800# LABEL IN EACH HEARTLAND UNIT  
Call Direct for Faster Results! Toll-Free Warranty #s!**

In an effort to offer the best possible service to Heartland owners, we provide a convenient sticker in each coach listing the warranty phone numbers of our most common vendor partners so that if you choose to, you may work directly with them to more quickly resolve issues or obtain replacement items. *NOTE: This service is provided for the benefit of our customers, so that they can speak immediately to the product component manufacturer. If an owner prefers to work through their purchasing dealer or Heartland's Customer Service Department, they may choose to do so.*

**HEARTLAND CUSTOMER SERVICE  
WE'VE GOT YOUR BACK!**



One of the top reasons that Heartland Recreational Vehicles has become the third largest manufacturer of fifth wheels in the world in just four years is because of our commitment to customer service after the sale. With more than 40 men and women located in a dedicated facility servicing our customers and our dealers every day, Heartland remains steadfast in our commitment to deal with any and all service issues and get our customers back on the road as soon as possible. With a dealer network now approaching 400 locations across the U.S. and Canada, you are never very far from an authorized Heartland dealer. New this year, Heartland is excited to announce that we have made a significant investment in an electronic integrated information system that will greatly enhance our ability to ship the correct parts on time, as well as quickly and efficiently administer warranty claims and vendor support issues.

HEARTLAND PROUDLY PARTNERS WITH THE FOLLOWING QUALITY VENDORS  
in manufacturing our recreational vehicles:



Experience Virtual Tours and Product Walk-Through Videos  
at our Informative Web Site:

[www.HEARTLANDRVs.com](http://www.HEARTLANDRVs.com)



Product information is as accurate as possible as of the date of publication of this brochure. Due to Heartland's commitment to continuous product improvement - floorplans, materials, components, features, specifications, options, etc. are subject to change without notice or obligation to Heartland Recreational Vehicles. BIGHORN specifications apply to coaches beginning with serial number 11766.

**Tow Vehicle Caution:** Owners of Heartland recreational vehicles are solely responsible for the selection and proper use of tow vehicles. All customers should consult with a motor vehicle manufacturer or their dealer concerning the purchase and use of suitable tow vehicles for Heartland products. Heartland disclaims any liability or damages suffered as a result of the selection, operation, use or misuse of a tow vehicle. Heartland's limited warranty does not cover damage to the recreational vehicle or the tow vehicle as a result of the selection of the tow vehicle.

See your nearest Heartland dealer to review a current model. 120M LITHO 1/08