

# BIG COUNTRY

**BRINGING  
THE COUNTRY  
TO YOUR DOOR**



*AFFORDABLE LUXURY*



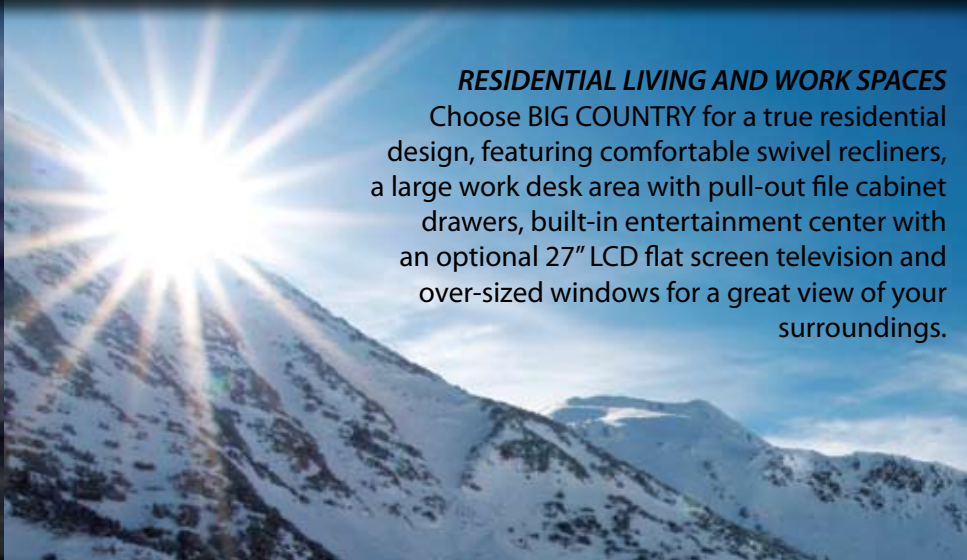
### *SPACIOUS INTERIORS*

BIG COUNTRY luxury fifth wheels by Heartland RV offer six triple slide-outs and one quad slide-out floorplan, each providing the ultimate in interior spaciousness. You'll appreciate the Amish-crafted hardwood cabinetry with rich, solid-surface counter tops that provide a truly residential look and feel. Stunning molded slide fascias combine with elegant furnishings including hard sided window valances and decorative glass inserts in the overheads and entertainment center provide an elegant touch.



### *RESIDENTIAL LIVING AND WORK SPACES*

Choose BIG COUNTRY for a true residential design, featuring comfortable swivel recliners, a large work desk area with pull-out file cabinet drawers, built-in entertainment center with an optional 27" LCD flat screen television and over-sized windows for a great view of your surroundings.



**HIGH-END FIFTH WHEEL  
LUXURY**

Heartland listens to what customers request and we are excited to offer them true residential designs, including this BIG COUNTRY island kitchen floorplan (3500RL). Providing unmatched storage and counter top space, this model features true solid-surface counter tops with matching sink covers, an extra-large pantry, deep stainless steel sink with pull-out sprayer faucet, and more - making this kitchen a cook's dream!

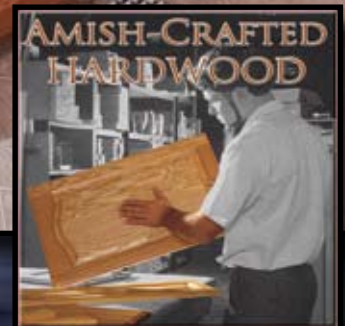


3500RL



**HIDDEN STORAGE**

Extra storage is provided by built-in storage in each high-back dinette chair and in the table itself.



**HARDWOOD CABINET DOORS & DRAWERS**

Be sure to check when shopping whether other brands have the typical, thin hardwood veneers over chipboard - or real Amish-crafted hardwood doors like BIG COUNTRY.



2950RK



**CREATIVE, FUNCTIONAL FLOORPLAN DESIGNS**

The all-new BIG COUNTRY features exciting new interior concepts offering loads of rich natural hardwood cabinetry, plush interior furnishings, abundant counter top space, and over-sized windows that provide a great view of your surroundings. This 2950RK model also features a cross-conversational living room design that is perfect for entertaining guests or relaxing for the evening.



**STEEL BALL BEARING DRAWER GUIDES**

When it comes to smart designs - the BIG COUNTRY leads the way with convenient and helpful concepts like our full-extension steel ball bearing drawer guides. The extra strong drawer guides allow us to offer larger drawers which extend past the cabinet face for maximum usage.



EMERALD PATINA

**LUXURIOUS DECORS**

Choose from four elegant decors featuring durable fabrics on the furnishings and window coverings.



SIENNA



PEBBLE



TAN



**WIDE OPEN CONCEPTS**

You'll enjoy the open, spacious feeling that you get in each BIG COUNTRY fifth wheel, including this side-aisle bath model. Highlighting the interior is an abundance of hardwood cabinetry, stunning slide-out fascias, oil-rubbed bronze hardware, lighting over the sofa that is built-in to a soffit, and an entertainment center that reminds you of home!



**RESIDENTIAL APPEAL**

Choose the BIG COUNTRY for true residential features such as our stainless steel sink with solid-surface sink covers and pull-out sprayer faucet.





### ***ROOMY SLIDE-OUT BEDROOMS***

BIG COUNTRY fifth wheels feature roomy queen bed slide-outs for maximum comfort and spaciousness some models offer a King bed. As with most luxury fifth wheels, the BIG COUNTRY features a custom headboard, two windows in the slide room for maximum ventilation, a full-width wardrobe with built-in storage shelves, individually controlled reading lights, matching night stands and under-bed storage.

### ***LARGE, USABLE WARDROBE AND DRESSER SPACE***

You'll love the BIG COUNTRY's full-width front wardrobe with overhead shelf, a large nine-drawer dresser with lots of counter space, an overhead shelf with room for a flat screen TV and cable hook-ups and a nice sized window.





#### **SPACIOUS BATHROOM CONCEPTS**

Choose the BIG COUNTRY fifth wheel for a roomy bath design featuring an extra-large lav base with mirrored medicine cabinet and shelves; a solid, one-piece fiberglass shower with glass door enclosure and overhead skylight, and porcelain sink.

#### **WELL THOUGHT OUT DESIGN**

BIG COUNTRY customers expect the best for their investment and Heartland gives it to them with this large linen closet with built-in storage and washer/dryer prep (where available); along with a private commode room with overhead cabinet storage and both heating and air conditioning ducts.



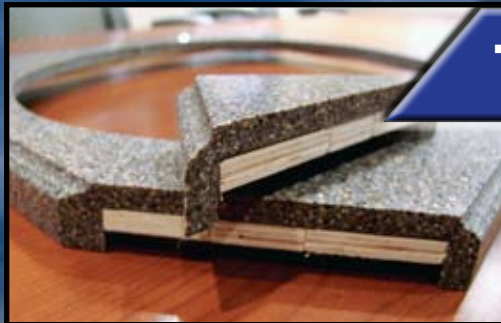
#### **QUAD-SLIDE LIVING**

When it comes to affordable luxury, the BIG COUNTRY quad-slide model (3500RL) leads the way! Featuring all of the same designs and amenities that others are charging much more for, the BIG COUNTRY simply offers more value for your money!





A) Upgraded Antenna for Better Reception B) True Solid-Surface Counter tops C) Elegant, Molded Slide-Out Fascias D) Exterior Speakers for Enjoying Under Your Awning E) Front Closet at Entry (most models) - Hides System Controls and Switches, Offers Coat Hooks and Storage Space.



## TRUE SOLID-SURFACE.

BIG COUNTRY's HANEX™ TRUE RESIDENTIAL SOLID SURFACE Counter Tops increase the usability, beauty and value of our coaches. The advanced blend of natural materials and pure, acrylic polymer is formed over a strong plywood base, providing design versatility and long-term performance to our customers. Hanex™ is one of the toughest counter tops in the world that is both durable and RENEWABLE.

**RENEWABLE** means it is the same consistency through and through and if scratched or chipped, can be easily repaired so that it looks like new!

The competition on the other hand... offers only a thin layer of FIBERglass, adhered to lesser quality particle board material that disintegrates when it gets wet. The FIBERS of these counter tops tend to stick out of the bottom edges and are painful to the touch.



**vs. THIN FIBERGLASS.**

The optional **HITCH COVER** provides not only a great, clean look - but improved aerodynamics.

**UNIVERSAL DOCKING CENTER**  
Each BIG COUNTRY features Heartland's famous UDC that contains all the units hook-ups - including the tank pull handles - have been engineered into one easy-to-access, concealed compartment. There are even water heater by-pass and winterization valves located here for your convenience.



# LAMINATED FLOOR SYSTEM

BIG COUNTRY's LAMINATED Floor System is one of the **STRONGEST FLOORS** in the industry! Featuring sturdy 2.5" Aluminum Framing; thick Block Foam Insulation; One-Piece Seamless Decking and a Thermo-Board Luan on the bottom. All of this is Laminated together for Maximum Strength and Insulation RValue - virtually eliminating flex in the floor!

HEARTLAND's LAMINATED Floor Construction easily supported over 1,800 lbs. of Water Jugs in one spot - resulting in less than 1/4" of flex!!

Heartland builds recreational vehicles with as many residential features and construction methods as possible and we are excited to introduce this 3" Laminated Floor System in our top three lines of fifth wheels. Choose Heartland for Maximum Strength; Maximum Insulation Value; and Minimal Flex!!

HEARTLAND's 3" LAMINATED FLOOR



Traditional RV Floor Construction often flexes in the middle of the coach - because that's where the holding tanks are located and there is no steel frame support under the lumber.

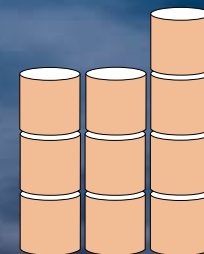


**DROP FRAME STORAGE**  
Provides over 140 cubic feet of clean, pass-through storage space!

## INCREASED CAPACITIES!



HEARTLAND  
12 Gallon  
Water Heater



OTHERS  
10 Gallon  
Water Heater



75 GAL.  
FRESH  
WATER

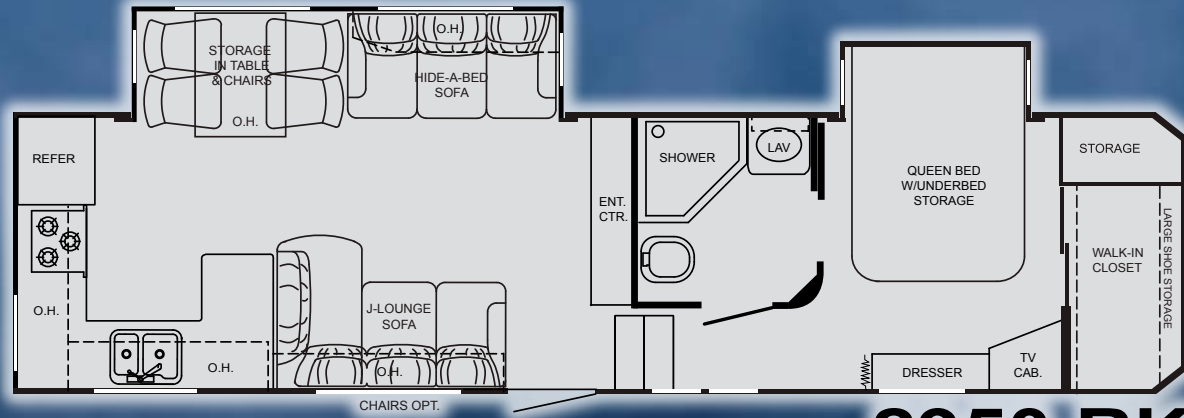
HEARTLAND



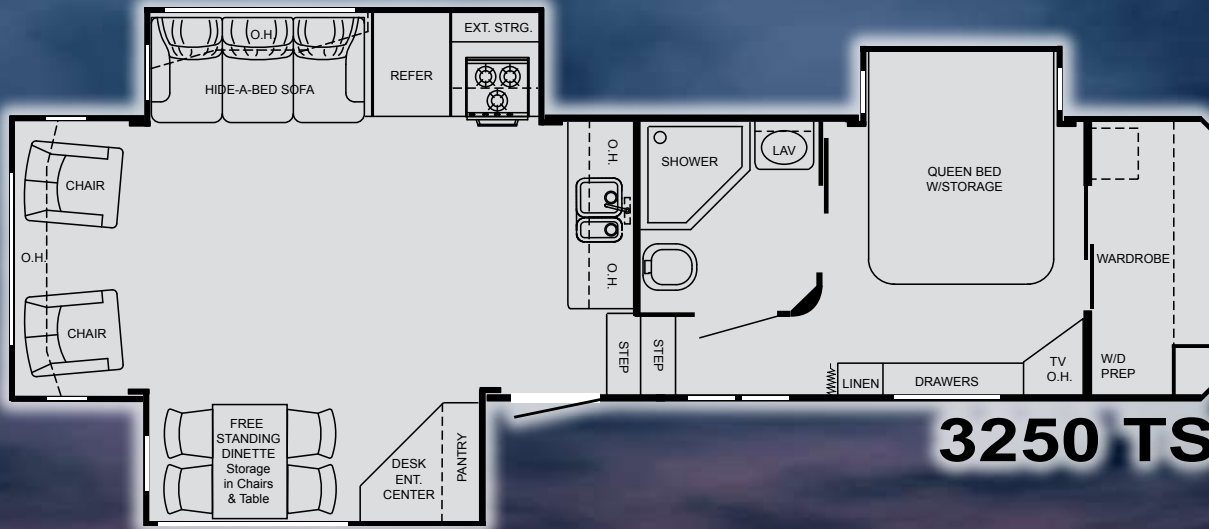
60 GAL.  
FRESH  
WATER

OTHERS

Length: 32'-10"  
 GVWR: 14,000 lb.  
 Dry: 9,755 lb.  
 Hitch: 2,270 lb.  
 Height: 12' -11"



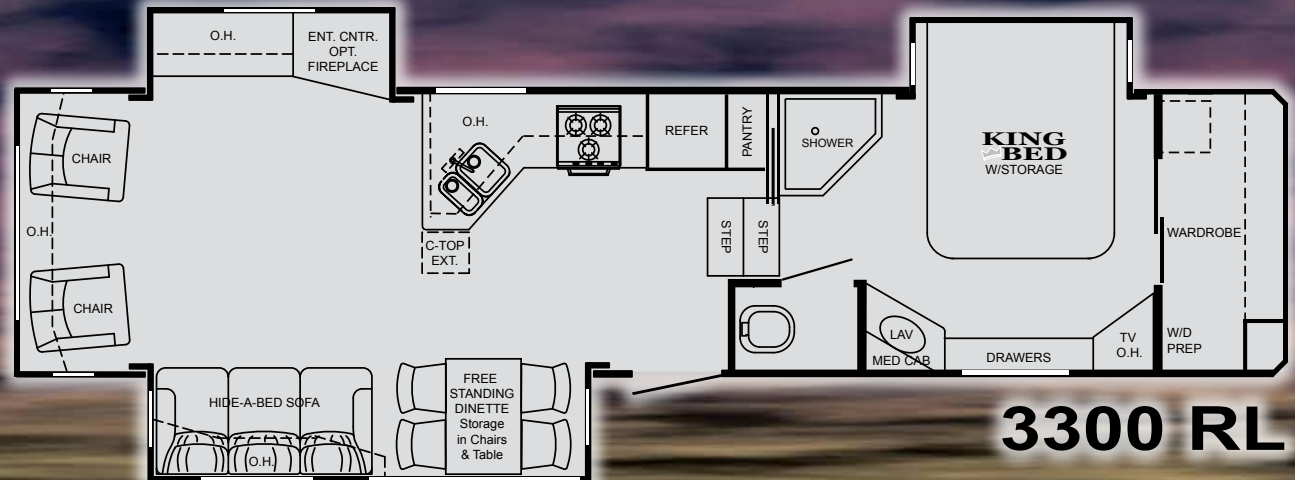
**2950 RK**



**3250 TS**

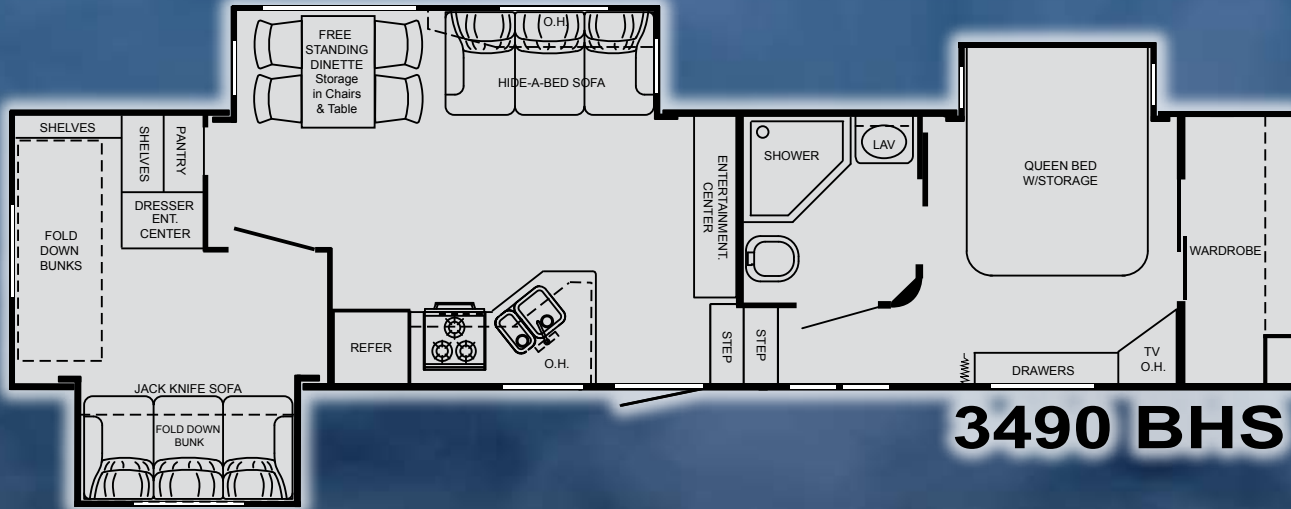
Length: 33'-2"  
 GVWR: 14,000 lb.  
 Dry: 10,310 lb.  
 Hitch: 1,920 lb.  
 Height: 12' -11"

Length: 35'-5"  
 GVWR: 14,000 lb.  
 Dry: 10,540 lb.  
 Hitch: 1,825 lb.  
 Height: 12' -11"



**3300 RL**

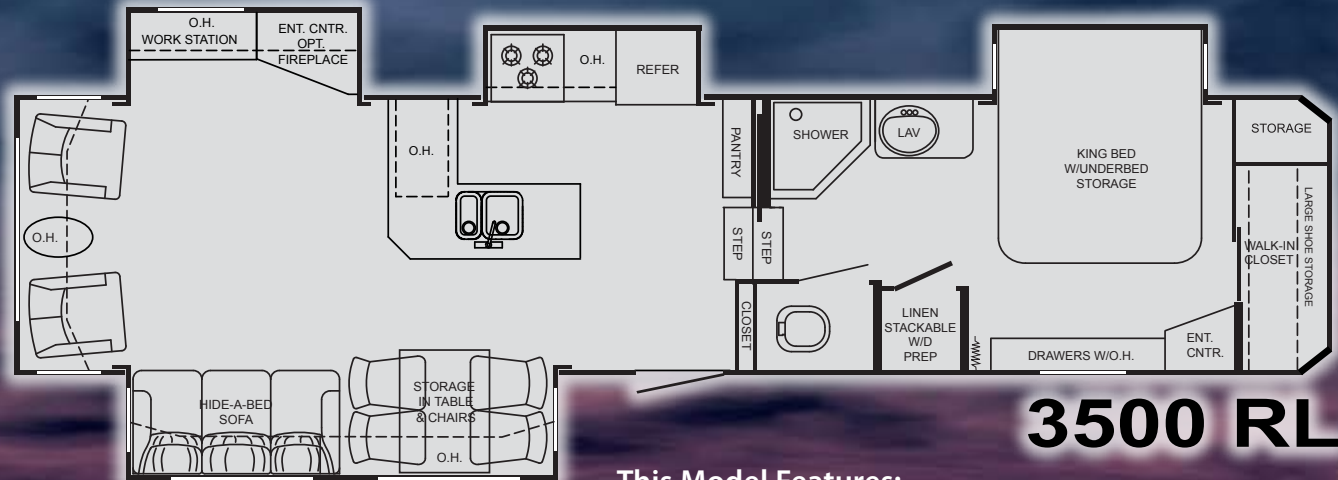




## 3490 BHS

Length: 35'-5"  
 GVWR: 14,000 lb.  
 Dry: 10,575 lb.  
 Hitch: 2,1200 lb.  
 Height: 12' -11"

Length: 38'-1"  
 GVWR: 15,500 lb.  
 Dry: 11,775 lb.  
 Hitch: 2,060 lb.  
 Height: 12' -11"



## 3500 RL

This Model Features:  
 12" I-Beam • 7,000 lb. Axles • G-Rated Tires

Note: Add 9 inches to overall length for models with extended pin box.



**HAND CRAFTED CABINETRY**

- All Cabinet Frames are Pre-Drilled, and Screwed Together - not stapled
- Baltic Birch Drawer Construction (Real Wood)
- Deluxe **Ball-Bearing** Drawer Guides
- Beautifully Crafted Crown Moulding

**\*PATENTED Front Cap and Frame Design - SPECIALLY Designed and Engineered For SHORT BED TRUCKS**

- Allows for 88° Turning Radius on Short Bed, Extended Cab Trucks
- Truly Unique Aerodynamic Profile

**Universal Docking Center -**

- \*12 Volt Light
- \*All Tanks Pull Handles
- \*Hot & Cold Shower with Sprayer
- \*Black Tank Flush System Hook Up
- \*City Water Hook Up
- \*Shielded RG-6 Coaxial Cable Hook Up
- \*Satellite Hook Up (Roof OR Tri-Pod)
- \*Telephone Hook Ups
- \*Winterization Valves

**The BIGGEST STORAGE In It's Class:**

- **Over 145 Cubic Feet** of Storage!
- Large Insulated Access Doors
- Unobstructed Pass-Through Design
- Aluminum Framed Storage
- 110V Outlet & Cable TV Plug
- 12V Trunk Lights
- Unobstructed, Clean Front Storage Area

**BEDROOM**

- Large **Walk-In Front Wardrobe**
- **Bedroom Slideout** w/Underbed Storage
- Two Windows in Slide for Better Air Flow
- Large Dresser w/Large Drawers
- 6'-4" Bedroom Ceiling Height Throughout
- Reading Lights Over Bed
- Nightstand
- Speakers in Bedroom w/ A-B Switch

**WALL CONSTRUCTION**

- Fiberglass Sidewalls
- Double-Welded Aircraft Quality Aluminum

**STANDARD WINDOW FEATURES**

- Dark Tinted Safety Glass Windows with UV Inhibitor
- Panoramic Rear Bay Window Setup
- Panoramic Windows in Dinette Area
- Ventilation Slider Side Windows

**Exterior Features**

- Exterior Speakers
- Jenson™ 12V Surround Sound System
- 2 Molded Security Lights
- Light at Entry Step

**ROOF CONSTRUCTION**

- 5" Attic Trusses for Extra Strength
- Walkable Roof Decking (3/8"), Glued and Screwed in Place
- One-Piece Seamless EPDM Rubber Roof
- R-14 Formaldehyde Free Insulation
- Moisture Ventilation Caps

**FRAME & LANDING GEAR**

- Strong 10" I-Beam Frame w/Drop Frame (12" I-Beam on 3500RL)
- Front Electric Landing Jacks
- Spring Loaded Snap Pins
- Heavy Duty Rear Stabilizer Jacks

**TIRE/AXLES/SUSPENSION**

- Heavy-Duty E-Rated 16" Tires (G-Rated on 3500RL)
- Trail-Air™ Equa-Flex Suspension
- White Steel Rims
- 6,000 lb. Axles (7,000 lb. on 3500RL)
- 2 x 12" Brakes
- ABS Fender Skirts

**UNDERBELLY**

- Seamless Corrugated Underbelly Material
- Heated and Enclosed Underbelly

- Heated and Insulated Holding Tanks & Gate Valves
- **Flexfoil Insulation (R-14)**

**PLUMBING**

- Color-Coded **Plumb-PLEX™** Water Lines w/10/25 Year **Warranty**
- Low Point Drains

**TANK SIZE & LP GAS SYSTEM**

- **75 Gallons - Fresh Water**
- 90 Gallons - Grey/45 Gallons - Black
- (2) 30# LP bottles w/Auto Change Over

**POWER**

- **60 AMP/12V DC Power Converter**
- 55 Amp Detachable Marine Cord
- Battery Box
- 110V Exterior Electrical Receptacles

**HEATING**

- Seamless One Piece In-Floor Heat Duct
- 35,000 BTU Furnace (40,000 on 3500RL)
- **Heated Stool Room**

**COOLING**

- 15,000 BTU Air Conditioner
- **Air Conditioned Stool Room**

**INSULATION VALUES**

- Walls - R8 Insulation
- Roof - R23 Insulation
- Floor - R27 Insulation

**MAIN SLIDE ROOM**

- 6'-5" Ceiling Height
- Hydraulic Operating System
- Double Squeegee Seals w/One-Piece Weather-proof Floor Pan.
- 12V Lights w/Wall Switches
- Cabinets Above Sofa
- Hydraulic Manual Override System

## STANDARD FEATURES CONTINUED:

### LIVING ROOM

- Decorative Glass Inserts in Overheads
- 110V Ceiling Fan with Light Kit
- Decorative Border Tape & S/O Fascias
- Day/Night Shades Throughout

### APPLIANCES AND LIGHTING

- 8 Cu.Ft Dometic™ Refrigerator
- Microwave Oven

### FOR YOUR PROTECTION & SAFETY

- Smoke Detectors on Ceiling
- Fire Extinguisher by Entry Door
- LP Gas & CO2 Detectors inside Unit
- Exterior Security Flood Lights
- Break Away Switch
- Deadbolt Lock on Entrance Door
- 120V GFI Protected Outlets
- Fire Escape Windows
- All Safety Glass Windows
- 12V Hitch Light

### KITCHEN

- Room for Large Trash Can (most models)
- Residential Sized Cabinets
- Residential Size Stainless Steel Sink
- Deep Residential Size Drawers
- Pull-Out Sprayer Faucet
- Large, Deep Pantry w/Adjustable Shelves
- Countertop Extension (most models)

### BATH AREA

- 6'-4" Bath/Bed Ceiling Height Throughout
- Large Medicine Cabinet
- Vanity Light Bar and Wall Mirrors

### SHOWER

- One-Piece Fiberglass Shower w/Seat
- Glass Shower Surround
- Adjustable Shower Head/Soap Dish
- Clear Skylight over Shower

### COMMUNE ROOM

- Power Roof Ventilation
- Dual 12V Lights with Soft Lighting Lenses
- Porcelain Commode w/Foot Flush
- Storage Shelf
- Heat Duct AND Air Conditioning Duct
- 110V Outlet for Night Light



## OPTIONS

### EXTERIOR –

- Electric Rear Jacks
- Electric Awning
- Aluminum Rims
- Molded Hitch Cover

### INTERIOR –

- Booth Dinette IPO Free Standing
- 27" LCD TV
- High Back Desk Chair (3300, 3500 only)
- 2 Recliners IPO J-Sofa (2950 only)
- Solid Surface Countertops

### APPLIANCES –

- Electric Fireplace (N/A on 3490BHS, 3490RB)

### HEATING & COOLING –

- Wired & Framed for Second A/C
- Dual Pane Windows

### BIG COUNTRY PACKAGE -

Ball-Bearing Drawer Guides; Electric Front Jacks; Message Center; Roof Ladder; One-Piece Fiberglass Shower w/ Skydome; Spare Tire & Carrier; Awning; 12 Gal. DSI Water Heater; Free Standing Dinette w/4 Chairs; Day/Night Shades; Air Mattress Hide-a-Bed Sofa; Courtesy Light Kit; Ceiling Fan w/Lights; Washer/Dryer Prep (most models); Fantastic Fan w/Rain Sensor in LVRM.; Outside Speakers; Upgraded Carpet; Fold-Away Entry Handle; Doorway Assist Handle; Crank Down Rear Stabilizer Jacks; Diamond-Plate Bumper Cover; Porcelain Toilet; E-Z Lube Hubs; Extended Hitch Pin; Range Cover; High-Output Range w/Auto Ignition; 22" Oven; Equa-Flex Suspension by Trail-Air; TV Antenna w/Booster; 2 Rocker/Recliners (where applicable); Stainless Steel Kitchen Sink; Aluminum Framed Laminated Floor Construction.

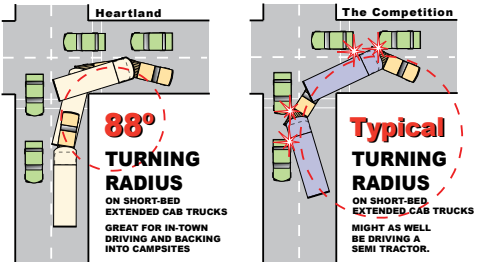
Product information is as accurate as possible as of the date of publication of this brochure. Due to Heartland's commitment to continuous product improvement - floorplans, materials, components, features, specifications, options, etc. are subject to change without notice or obligation to Heartland Recreational Vehicles. Big Country specifications apply to coaches beginning with serial number 11776.

**Tow Vehicle Caution:** Owners of Heartland recreational vehicles are solely responsible for the selection and proper use of tow vehicles. All customers should consult with a motor vehicle manufacturer or their dealer concerning the purchase and use of suitable tow vehicles for Heartland products. Heartland disclaims any liability or damages suffered as a result of the selection, operation, use or misuse of a tow vehicle. Heartland's limited warranty does not cover damage to the recreational vehicle or the tow vehicle as a result of the selection of the tow vehicle.

See your nearest Heartland dealer to review a current model. 100M LITHO 1/08

# SUPERIOR CONSTRUCTION AND DESIGN TRANSLATE INTO A SUPERIOR VALUE!

**ACHIEVE AN 88° TURN!**  
**IN A SHORT-BED, EXTENDED CAB TRUCK**  
**ONLY IN A HEARTLAND!**



**PATENTED!!**  
 DON'T ACCEPT ANY IMITATIONS - IF YOU CAN'T TURN 88° IT'S NOT A HEARTLAND!

*Perfect for Short-Bed, Extended-Cab Trucks*



**2" THICK SIDEWALLS!**

**Lightweight ALUMINUM**

Just an 1/8" thick foam cup protects your hand from scalding hot coffee... imagine what nearly 2" of block foam does for your Laminated Heartland Sidewall!

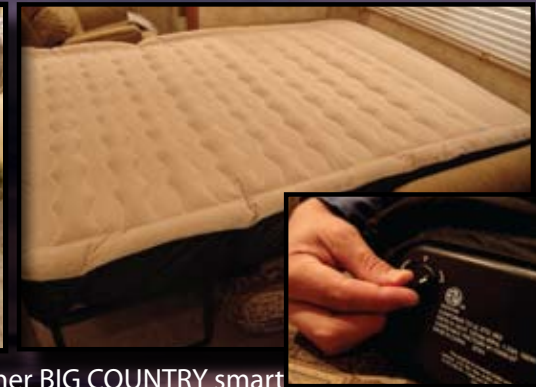
**Double Welded, Fully Laminated Sidewall Construction**

## ZERO° TESTED!

Heartland 5th wheel Construction has been subjected to rigid testing in the famous DOMETIC™ extreme temperature testing chamber where it passed with flying colors! The chamber is set to 0° to test the unit's heating efficiency, followed by being set at 100° to test its cooling efficiency. With our thick 2" laminated walls; enclosed and heated underbelly; and insulated floor - the interior of the Heartland coach remained warm and comfy during the sub-freezing test and nice and cool during the heat test!



For more details, visit our web site:  
[www.HEARTLANDRVs.com](http://www.HEARTLANDRVs.com)



**HIDE-A-BED AIR-MATRESS**

Yet another BIG COUNTRY smart design - the air-mattress hide-a-bed sofa offers the ultimate in comfort, as well as a deep drawer that is perfect for storing throw blankets and other items.

Maximize Your  
RV Experience...

Share Good Times!



Meet New Friends!

By Joining the



[www.heartlandowners.org](http://www.heartlandowners.org)



Heartland Recreational Vehicles  
1001 All-Pro Drive • Elkhart, IN 46514  
574-262-5992

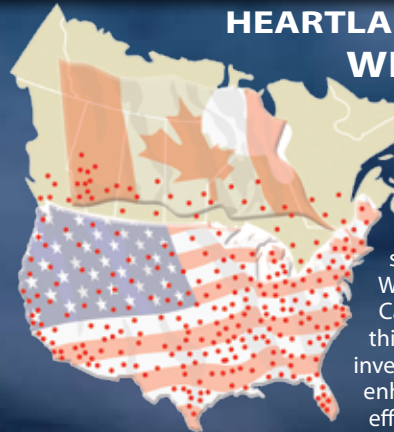
Your Authorized Heartland Dealer:



**VENDOR 800# LABEL IN EACH HEARTLAND UNIT  
Call Direct for Faster Results! Toll-Free Warranty #s!**

In an effort to offer the best possible service to Heartland owners, we provide a convenient sticker in each coach listing the warranty phone numbers of our most common vendor partners so that if you choose to, you may work directly with them to more quickly resolve issues or obtain replacement items. *NOTE: This service is provided for the benefit of our customers, so that they can speak immediately to the product component manufacturer. If an owner prefers to work through their purchasing dealer or Heartland's Customer Service Department, they may choose to do so.*

**HEARTLAND CUSTOMER SERVICE  
WE'VE GOT YOUR BACK!**



One of the top reasons that Heartland Recreational Vehicles has become the third largest manufacturer of fifth wheels in the world in just four years is because of our commitment to customer service after the sale. With more than 40 men and women located in a dedicated facility servicing our customers and our dealers every day, Heartland remains steadfast in our commitment to deal with any and all service issues and get our customers back on the road as soon as possible. With a dealer network now approaching 400 locations across the U.S. and Canada, you are never very far from an authorized Heartland dealer. New this year, Heartland is excited to announce that we have made a significant investment in an electronic integrated information system that will greatly enhance our ability to ship the correct parts on time, as well as quickly and efficiently administer warranty claims and vendor support issues.

HEARTLAND PROUDLY PARTNERS WITH THE FOLLOWING QUALITY VENDORS  
in manufacturing our recreational vehicles:



Experience Virtual Tours and Product Walk-Through Videos  
at our Informative Web Site:

[www.HEARTLANDRVs.com](http://www.HEARTLANDRVs.com)



Product information is as accurate as possible as of the date of publication of this brochure. Due to Heartland's commitment to continuous product improvement - floorplans, materials, components, features, specifications, options, etc. are subject to change without notice or obligation to Heartland Recreational Vehicles.

**Tow Vehicle Caution:** Owners of Heartland recreational vehicles are solely responsible for the selection and proper use of tow vehicles. All customers should consult with a motor vehicle manufacturer or their dealer concerning the purchase and use of suitable tow vehicles for Heartland products. Heartland disclaims any liability or damages suffered as a result of the selection, operation, use or misuse of a tow vehicle. Heartland's limited warranty does not cover damage to the recreational vehicle or the tow vehicle as a result of the selection of the tow vehicle.

See your nearest Heartland dealer to review a current model. 100M LITHO 1/08