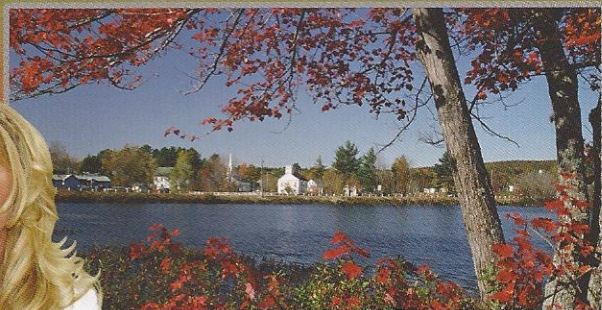
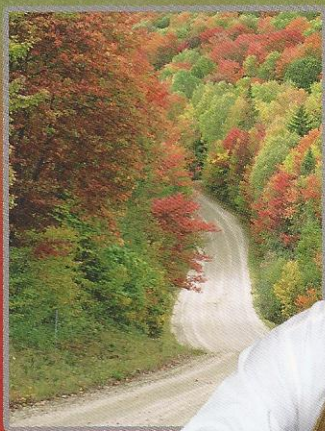


# KZ

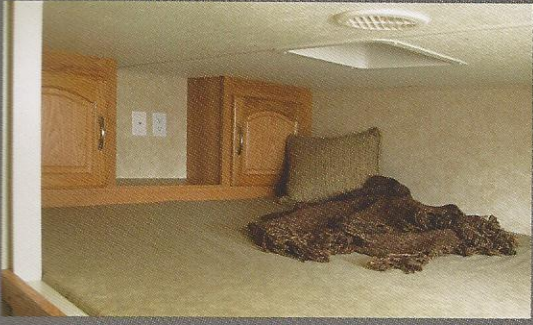
# Sportsmen Sportster™

Travel Trailers and Fifth Wheels



*“Together”...  
Discover More!*

Sportsmen  
**Sportster**™  
by K-Z



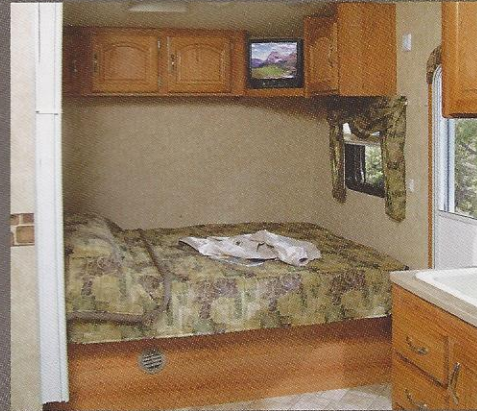
The optional bedroom loft is accessed with its own wooden ladder.



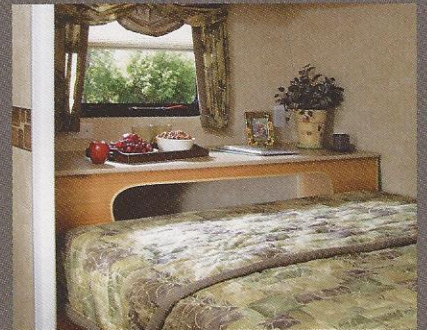
From the kitchen with all the necessary equipment to the comfortable living area with its easy-to-clean vinyl flooring, this unit has everything you need, and more.



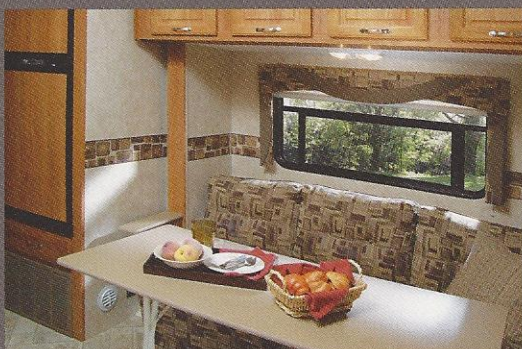
This K-Z unit is designed for true sportsmen (and women). Space-saving floorplans, durable interior and exterior materials and lots of storage cabinets make it the ideal Sportster unit for your action-packed adventures.



Get comfortable on your Posterest mattress after a long hike or trail ride.



This headboard doubles as a hidden storage space.



All units have color coordinated décor to suit your taste and personality. Upholstered furniture, bedspreads and pillow shams and curtains come together for a complete look.



Travel trailers and fifth wheels feature roomy baths. Another standard feature on this unit is an exterior shower, so you can keep excess dirt out where it belongs.

# Sportsmen Sportster™ Features



Outside Cook Top (option)



Outside Entertainment Center (option)



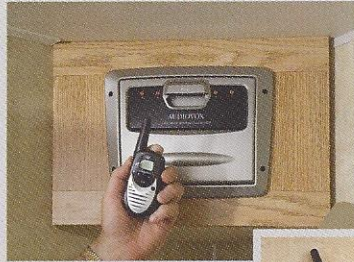
Exterior shower (standard)



Pull Down Screen Wall (option)



Work Cabinet (option)



Audiovox Two Way Radio Charger w/4 Walkie-Talkies (option)



Ramp Extension/Threshold Ramp (option)



Transport, protect and secure your valuable recreational machines whenever and wherever you travel.

## Travel Trailers

## Fifth Wheels

	24	26P	27	30P	32PSD	25	29P	32P	33P	35PX2	37FK	37K	37P	38SB	41K
UVW (Unloaded Vehicle Wt.)	5508	6110	5910	7160	8089	6121	7120	8540	9080	9520	10780	9940	9410	10714	10970
Dry Hitch Wt.	740	1160	960	1040	800	1315	1680	1390	1620	1700	2733	2505	2080	2934	3320
Dry Axle Wt.	4768	4950	4950	6120	7289	4806	5440	7150	7460	7820	8047	7435	7330	7180	7651
NCC (Net Carrier Capacity)	4492	3890	4090	3840	2311	3879	2880	4460	4520	4080	6160	6060	4330	7186	7029
GVWR	10000	10000	10000	11000	10400	10000	10000	13000	13600	13600	16940	16000	13740	17900	18000
Interior Height	78"	78"	78"	78"	78"	82"	82"	82"	82"	82"	82"	82"	82"	82"	82"
Exterior Height (w/ A/C)	135"	147"	135"	147"	147"	126"	139"	138"	138"	138"	149"	149"	149"	149"	149"
Exterior Length	26'10"	31'10"	31'3"	34'11"	34'	26'10"	31'11"	33'2"	34'6"	35'4"	39'10"	38'1"	38'1"	38'8"	42'1"
Exterior Width	102"	102"	102"	102"	102"	102"	102"	102"	102"	102"	102"	102"	102"	102"	102"
Fresh Water Cap. (gal.)	55	55	55	55	55	55	55	55	100	100	100	100	100	100	100
Opt. Water Cap. (gal.)	55	55	55	55	55	N/A	55	55	NA	NA	NA	NA	NA	NA	NA
Waste Water Cap. (gal.)	38	38	38	38	38	38	38	38	38	38	50	50	50	50	50
Gray Water Cap. (gal.)	38	38	38	38	38	38	38	38	38	38	50	50	50	50	50
LP Gas Cap. (lbs.)	60	60	60	60	60	60	60	60	60	60	60	60	60	60	60
Furnace BTUs (1000's)	20	20	20	20	20	20	20	30	30	30	30	30	30	30	30
Tire Size	15"	15"	15"	15"	15"	15"	15"	15"	16"	16"	16"	16"	16"	16"	16"

### Designer Package

- Sink Covers
- Stove Covers
- Bathroom Accessories

- Shower Door
- Postrest Mattress \*

- Foot Flush Toilet
- Assist Grab Handle

- Stabilizer Jacks
- Enclosed Pin Box

### Designer Plus Package

- 8 Cu.' Refrigerator w/Raised Oak Panel

- R14 Roof Insulation
- 40" Trunk Door in PSO \*

- Fantastic Fan
- Slider Windows in PSO \*

- Security Light on DS
- Black Water Tank Flush System

### Mandatory Living Package

- AM-FM CD Player w/Four Speakers (32' and smaller)
- DVD w/Surround Sound \* (33' and up)
- 13,500 BTU A/C (Ducted std. 26' and up)
- Awning
- Microwave
- Pillow for Sofa \*

- Oven
- 6 Cu.' Refrigerator
- TV Shelf in Bedroom
- TV Antenna w/Booster
- Cable Hookup
- Tub Surround
- Night Shades
- Fluted Glass Doors in Slide Outs
- Acrylic Sink w/High-Rise Faucet

- Raised Panel Mortis and Tenon Overhead Cabinet Doors
- Deluxe Roller Drawer Guides
- Deluxe Globe Light
- Fluorescent Light w/ Night Light over Kitchen Sink
- Sink Cover
- Skylight over Shower
- Porch Light on ODS

- Hitch Light
- Smoke Detector
- LP Detector
- CO Detector
- Chrome Rings and Caps
- 6 Gal. Gas/Elec. DSI Water Heater
- Exterior Shower

### Additional Options Available

- Fiberglass Exterior
- Heated and Enclosed Underbelly \* (std. on 33P and up)
- Bedroom Slide (35' and up)
- 15,000 BTU A/C
- Ladder
- Power Jacks
- Outside Grill
- Outside Entertainment Center \*

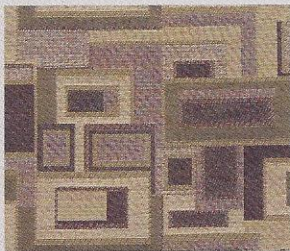
- Walkie-Talkies
- Shocks
- Spare Tire
- Spare Tire Carrier/Hoist
- Spare Tire Cover
- 50 Amp. Service
- Tinted Windows
- Aluminum Wheels
- CSA (Canada Required)

- Pull Down Screen Wall
- Extra 55 Gal. Fresh Water Tank \*
- Second Exterior Entry Door in Cargo
- Helmet Hangers
- Diamond Plate on Sidewalls
- Tuff Ply on Door/Floor
- Ramp Extension
- Threshold Ramp

- Tie Down Rings/Rails
- Flip Down Work Cabinet
- Wired for Generator
- Install Onan Generator
- Fuel Cell w/Pump Station
- Bedroom Loft w/ Wooden Ladder
- Power Bed in Cargo \*
- G Rated Tires (Forced on 37's)

\* where available

## Contempo



## Sienna



## Mahogany



## Adrenaline

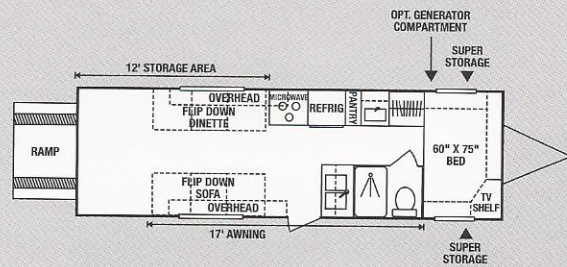


# Sportsmen Sportster™

by K-Z

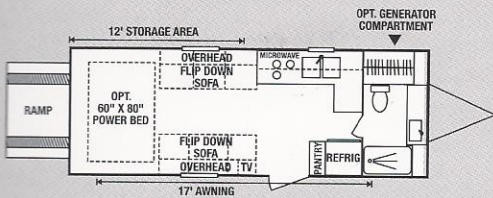
*There are so many options to choose from to make the Sportsmen Sportster your ideal recreational vehicle.*

For safety features, you can choose a smoke detector, LP tank detector, and carbon monoxide detector. Outside options range from a hitch light, a grill, an entertainment center, and an exterior entry door to the cargo area. Inside the cargo area you can upgrade to Diamond Plate sidewalls, Tuff Ply on the ramp door and floor, and you can add a ramp extension. And just to be sure you're never stranded in the wilderness, we've wired some units for a generator.

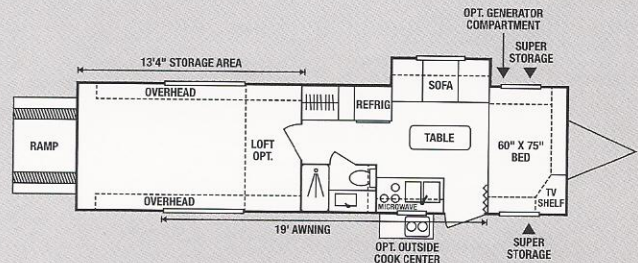


**27** • UVW 5910 • Dry Hitch Wt. 960 • NCC 4090 • Length 31'3"

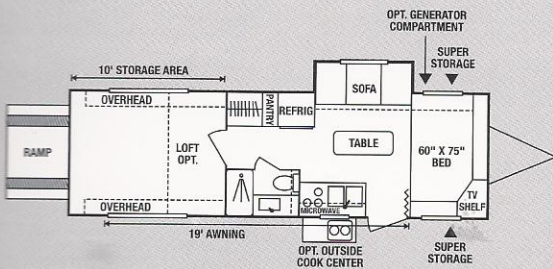
## Travel Trailers



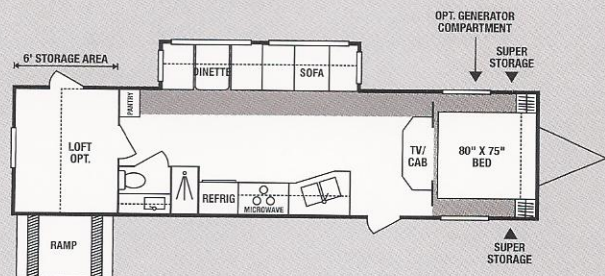
**24** • UVW 5508 • Dry Hitch Wt. 740 • NCC 4492 • Length 26'10"



**30P** • UVW 7160 • Dry Hitch Wt. 1040 • NCC 3840 • Length 34'11"

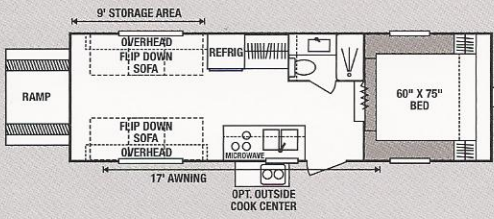


**26P** • UVW 6110 • Dry Hitch Wt. 1160 • NCC 3890 • Length 31'10"

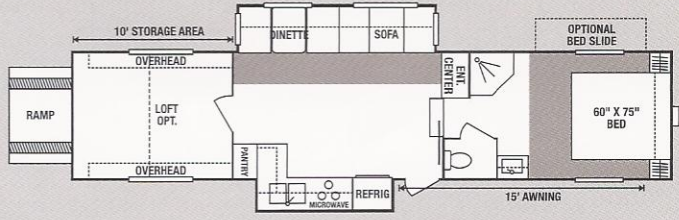


**32PSD** • UVW 8089 • Dry Hitch Wt. 800 • NCC 2311 • Length 34'

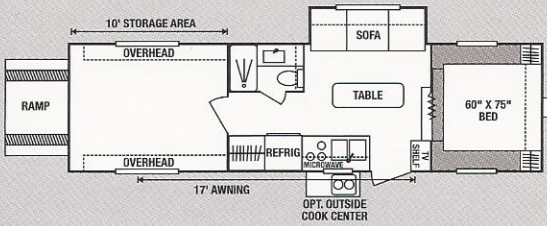
# Fifth Wheels



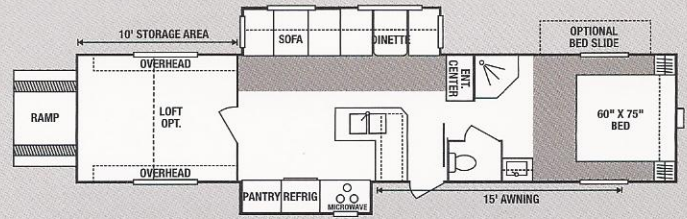
**25** • UVW 6121 • Dry Hitch Wt. 1315 • NCC 3879 • Length 26'10"



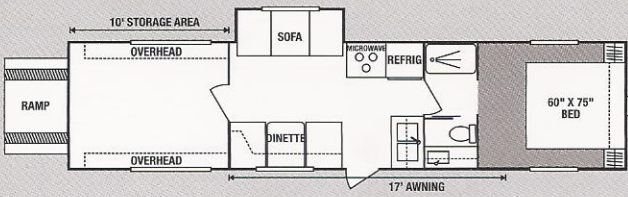
**37FK** • UVW 10780 • Dry Hitch Wt. 2773 • NCC 6160 • Length 39'10"



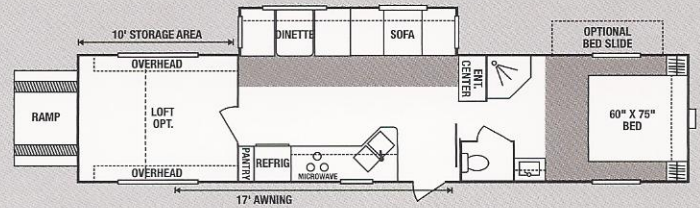
**29P** • UVW 7120 • Dry Hitch Wt. 1680 • NCC 2880 • Length 31'11"



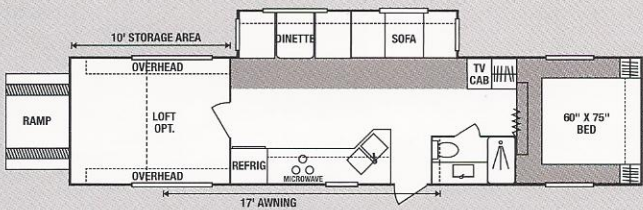
**37K** • UVW 9940 • Dry Hitch Wt. 2505 • NCC 6060 • Length 38'1"



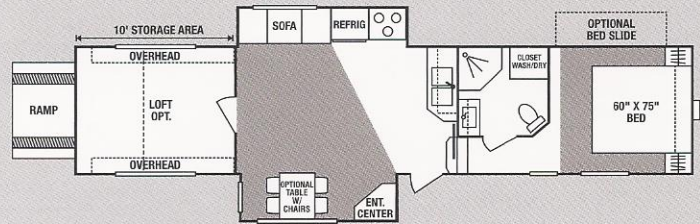
**32P** • UVW 8540 • Dry Hitch Wt. 1390 • NCC 4460 • Length 33'2"



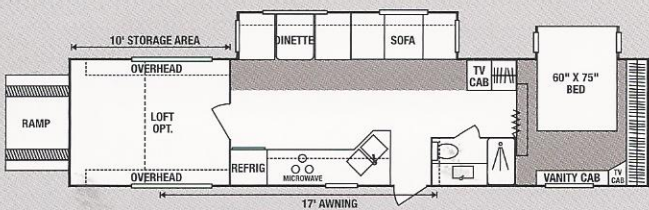
**37P** • UVW 9410 • Dry Hitch Wt. 2080 • NCC 4330 • Length 38'1"



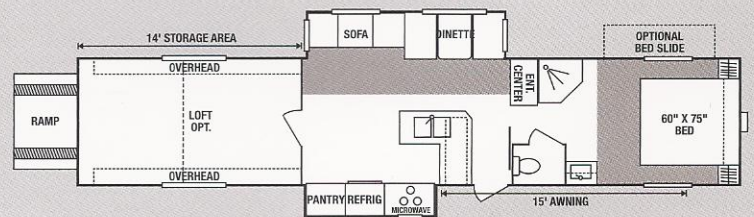
**33P** • UVW 9080 • Dry Hitch Wt. 1620 • NCC 4520 • Length 34'6"



**38SB** • UVW 10714 • Dry Hitch Wt. 2934 • NCC 7186 • Length 38'8"



**35PX2** • UVW 9520 • Dry Hitch Wt. 1700 • NCC 4080 • Length 35'4"



**41K** • UVW 10970 • Dry Hitch Wt. 3320 • NCC 7029 • Length 42'1"



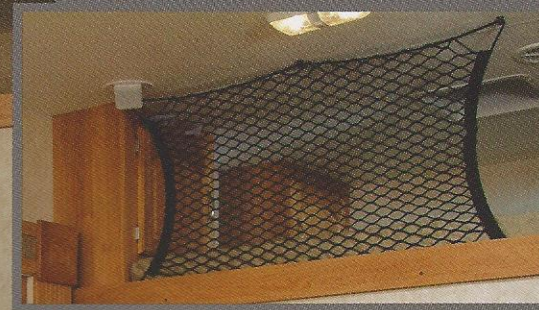
Sportsman  
**Sportster**<sup>™</sup>  
by K-Z

*Sports Edition*

Discover the distinctive features of this Sports Edition toy hauler that will make your leisure time adventure both exciting and comfortable. Notice the extra sleeping capacity in the upper loft which includes a plush foam mattress, safety netting and dual storage cabinets... there's even a space for your portable TV.

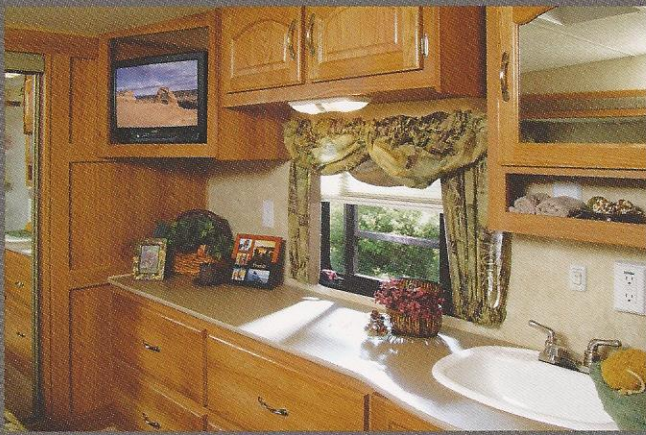
The spaciousness created by the living/dining area expansion slide out offers a relaxing space to enjoy TV or a casual meal prepared in your kitchen well equipped with plenty of storage.





The kids will love to retreat to the sleeping loft, complete with safety netting, at the end of their busy day.

The dual deep basin sink features a high-rise brushed Nickel faucet, a six or eight cubic foot refrigerator, stove and above the range microwave. Raised oak mortis and tenon overhead cabinet doors with brushed nickel hardware refine the interior space of this rugged toy hauler.



Enjoy a hot shower and a comfortable bed in this well planned bed and bath combination. A large mirrored wardrobe, plenty of cabinets, a lavatory with lighted mirrored medicine cabinet and even underbed storage, all combine to make the Sports Edition Sportster beautiful, comfortable and functional.



# Sportsmen Sportster™ S.E. Features



Dual Swing-Away Extendable High Intensity Work Lights (optional)



Wall Mounted Aluminum Storage Cabinet to Keep Tools and Supplies (optional)

Drop Down Front means Easy Access and Quick Counter Space



Choose from two floorplans, these units are designed with special garage features for the Power Enthusiast! Features such as dovetail rear ramp, second exterior entry door, generous overhead cabinet storage, diamond plate side wall, Tuff Ply on the door and floor and the list goes on.

Look for the details and you'll see why

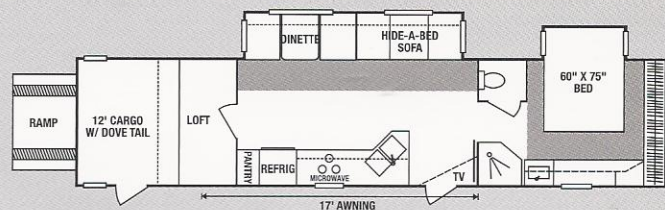
**KZ** Toy Haulers are so popular.



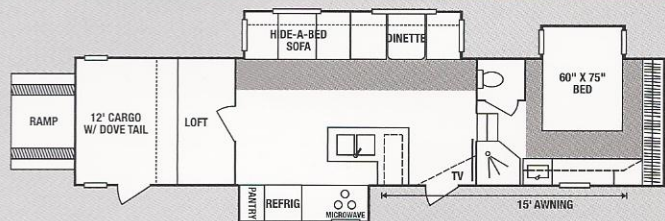
Track Mounted Roll Down Insect Screen, Side Wall Mounted Venting, Side Wall Diamond Plate, Dove Tail Rear Ramp Entry Detail with Tuff Ply Coating and 9 Tie Down Rings.



	36SE2	36SE3
UVW (Unloaded Vehicle Wt.)	11341	11727
Dry Hitch Wt.	2443	2507
Dry Axle Wt.	8898	9220
NCC (Net Carrier Capacity)	4659	4273
GVWR	16000	16000
Exterior Height (w/ A/C)	149"	149"
Exterior Length	39'2"	39'2"
Exterior Width	102"	102"
Fresh Water Cap. (gal.)	100	100
Waste Water Cap. (gal.)	50	50
Gray Water Cap. (gal.)	50	50
LP Gas Cap. (lbs.)	60	60
Furnace BTUs (1000's)	30	30
Tire Size	16"	16"



**36SE2** • UVW 11341 • Dry Hitch Wt. 2443 • NCC 4659 • Length 39'2"



**36SE3** • UVW 11727 • Dry Hitch Wt. 2507 • NCC 4273 • Length 39'2"

### Designer Package

- Sink Covers
- Stove Covers
- Bathroom Accessories
- Shower Door
- Posterest Mattress
- Foot Flush Toilet
- Assist Grab Handle
- Stabilizer Jacks
- Enclosed Pin Box

### Designer Plus Package

- 8 Cu.' Refrigerator w/Raised Oak Panel
- R14 Roof Insulation
- Fantastic Fan
- Slider Windows in PSO
- Security Light on DS
- Black Water Tank Flush System

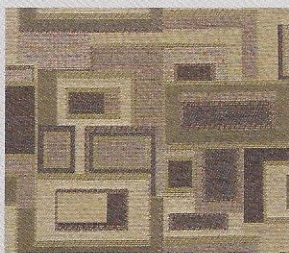
### Mandatory Living Package

- Am-Fm CD/DVD Player w/Surround Sound
- 13,500 BTU A/C
- Awning
- Microwave
- Pillow for Sofa
- Oven
- 6 Cu.' Refrigerator
- TV Shelf in Bedroom
- TV Antenna w/Booster
- Cable Hookup
- Tub Surround
- Night Shades
- Fluted Glass Doors in Slide Outs
- Acrylic Sink w/High-Rise Faucet
- Deluxe Roller Drawer Guides
- Raised Oak Mortis and Tenon Overhead Cabinet Doors
- Two Lights by Sofa
- Deluxe Globe Dinette Light
- Fluorescent Light w/ Night Light over Kitchen Sink
- Sink Cover
- Skylight over Shower
- Brushed Nickel Faucets and Cabinet Hardware
- Porch Light on ODS
- Hitch Light
- Smoke Detector
- LP Detector
- Chrome Rings and Caps
- Exterior Shower

### Sports Edition Package

- Fiberglass Exterior
- Bedroom Slide
- 15,000 BTU A/C
- Power Jacks
- Shocks
- Spare Tire
- Spare Tire and Hoist
- Tinted Safety Windows
- 100 Gal. Fresh Water Tank
- Second Exterior Entry Door in Cargo
- Tuff Ply on the Door
- Tuff Ply on the Floor
- Diamond Plate on the Side Walls
- 9 Tie Down Rings
- Bedroom Loft
- Wired for Generator w/Remote Start Switch
- Heated and Enclosed Underbelly
- Hide-a-Bed
- Dove Tail Rear Ramp Design
- Wire for A/C in Cargo
- 50 Amp. Service
- 10 Gal. Gas/Elec. Water Heater
- Ladder
- Triple Axles
- Aluminum Wheels
- 12" Cargo Box
- Outside Entertainment Center
- TV

Contempo



Sienna

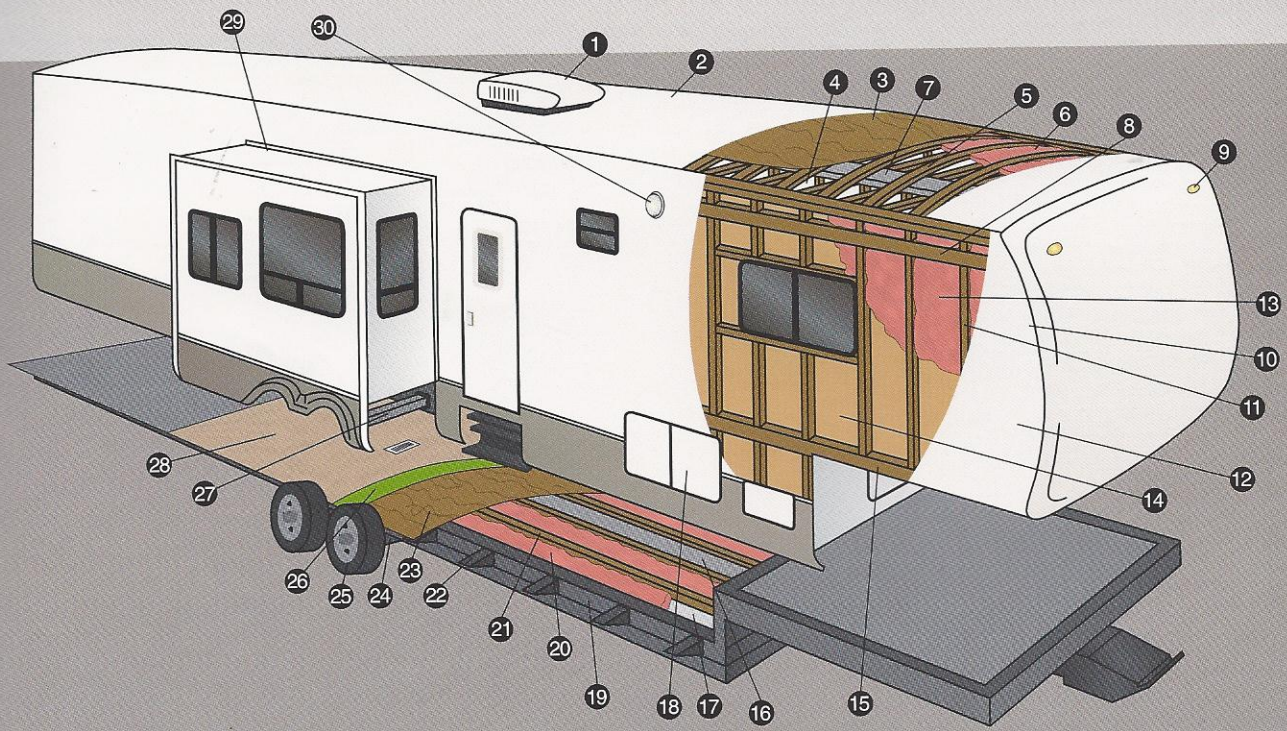


Mahogany



Adrenaline





- |   |   |  |
|---|---|--|
| <ul style="list-style-type: none"> <li>1 13,500 BTU A/C</li> <li>2 One-Piece Seamless Rubber Roof</li> <li>3 3/8" Decking</li> <li>4 Vinyl Interior Ceiling Panel</li> <li>5 4 1/2" Wood Truss Rafters, 16" O.C.</li> <li>6 R-7 Batten Insulation</li> <li>7 Insulated Ductwork</li> <li>8 1 1/2" x 5" Heavy Duty Laminated Wood Headers</li> <li>9 Exterior Clearance and Brake Lights</li> <li>10 2x2 Wood Frame Front and End Walls</li> </ul> | <ul style="list-style-type: none"> <li>11 2x2 Wood Studs, 16" O.C.</li> <li>12 Metal Siding (standard)</li> <li>13 R-7 Batten Insulation</li> <li>14 Decorative Luan Wall Board</li> <li>15 Single 8" Wood Stringer</li> <li>16 Residential Style Ducted Heat Run in Floor</li> <li>17 Darco® Moisture Barrier</li> <li>18 Large Capacity Pass-Thru Exterior Storage with Radius Doors Front and Side for Easy Access</li> <li>19 Heavy Duty I-beam Frame Construction</li> <li>20 R-7 Batten Insulation</li> </ul> | <ul style="list-style-type: none"> <li>21 2x3 Wooden Floor Joists, 16" O.C.</li> <li>22 Fully Welded Out Riggers</li> <li>23 5/8" Tongue and Groove Plywood</li> <li>24 Heavy Duty Leaf Spring Axles</li> <li>25 Heavy Duty Steel Wheels with Trim Rings and Center Caps</li> <li>26 Residential Style Carpet Pad</li> <li>27 Rack and Pinion Electric Slide with Manual Override with 2x3 Box Tube Slide Out Ram</li> <li>28 28 oz. Residential Carpet or Linoleum</li> <li>29 Triple Sealed Slide Outs</li> <li>30 Exterior Security/Scare Lights</li> </ul> |
|---|---|--|



*An innovative leader in RV design and development, K-Z's desire is to engineer affordable, high-value products that deliver customer satisfaction year after year.*

*See for yourself why K-Z has been awarded the Dealer Satisfaction Index six years in a row.*

**2X2 WARRANTY** – The K-Z 2x2 Warranty is a manufacturer's warranty. Each K-Z product is warranted to the original purchaser for twenty-four (24) months from the original date of purchase. Coverage includes appliances, components, construction and FULL structure. Our warranty is also transferable within the first two (2) years for a small processing fee. For a copy of the warranty with full terms and conditions, ask your local K-Z Dealer or visit our web site at <http://www.kz-rv.com>.

**VEHICLE LOADING** – Every effort has been made to provide the greatest number of options for the recreational owner. Each owner is responsible to select loads allowing the recreational vehicle to remain within the manufacturer's specified chassis weight limits. Do not overload the recreational vehicle.

**UNLOADED VEHICLE WEIGHT (UVW)** – The typical weight of this trailer as built at the factory. The UVW does not include cargo, LP gas, fresh water, options or dealer-installed accessories.

**GROSS VEHICLE WEIGHT RATING (GVWR)** – The maximum permissible weight of the trailer, including the UVW plus passengers, all cargo, personal items, fluids, options and dealer-installed accessories. The GVRW is equal to or greater than the sum of the UVW and the NCC.

**NET CARRYING CAPACITY (NCC)** – The maximum weight of all passengers, personal items, fresh water, food, tools, LP gas, other cargo and dealer-installed accessories\* that can be carried by the trailer. NCC is equal to or less than GVWR minus UVW.

\* The addition of options will decrease the NCC.

It is important for your safety and enjoyment that your tow vehicle be adequately sized and equipped to tow and handle the GVWR of the RV you select. Review weights and rating of your tow vehicle and consult a competent advisor for questions or advice. Whether you are new to RVing or a seasoned veteran, get a feel for the performance of your tow vehicle and the RV together before heading out on the roadways. When you tow an RV, you must drive differently than you do when driving a single vehicle. Practice hooking up, driving, backing up and braking in a safe environment or seek out professional instruction.

See specification chart above. K-Z affixes a weight label to each new RV which lists weight information for that vehicle.

**NOTE:** This information is intended as a guide only. Weights of individual vehicles are approximate. Consult your Owner's Manual for complete loading, weighing and towing instructions. All weights may vary.

**Dealer:**

**Jerry's Trailers & Campers, Inc.**  
 2601 South 13th St.  
 Norfolk, NE 68701  
 (402) 371-1306  
[www.jerrystrailers.com](http://www.jerrystrailers.com)



**K-Z** • 9270 West U.S. 20 • Shipshewana, IN 46565  
 E-Mail [kz@kz-rv.com](mailto:kz@kz-rv.com) • [www.kz-rv.com](http://www.kz-rv.com)



Due to continual research and advances, manufacturer reserves the right to change specifications, design, price and equipment without notice, and assumes no responsibility for any error in this literature. Some items shown are not included as standard or optional equipment. ©2006K-Z