

KZ SPORTSMEN[®]

Travel Trailers and Fifth Wheels



*"Together" ...
Discover More!*



SPORTSMEN®

The comfortable living/dining area features a full sofa and dining table and chairs (optional), all upholstered in one of several designer-created décor packages. A wall of windows and deluxe globe overhead lights allow you to enjoy the beauty of the space, day or night.

Contempo

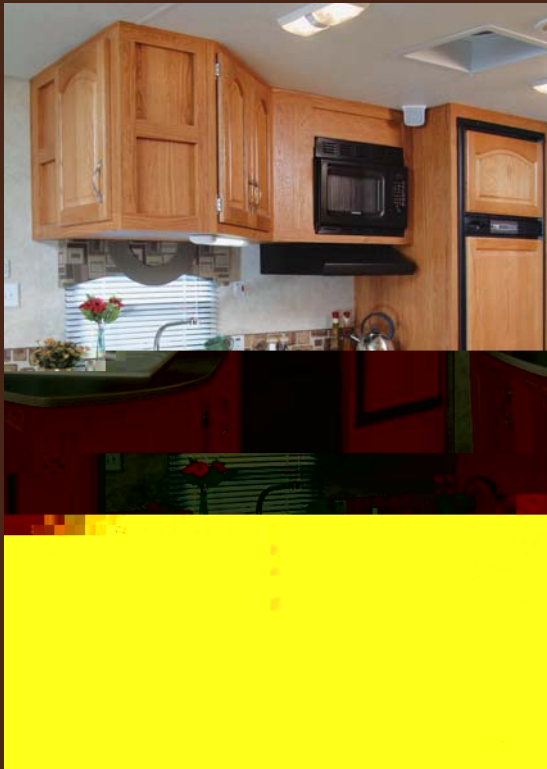


Sienna





3008P shown with Contempo décor



This kitchen comes standard with a 6-cubic foot refrigerator, microwave, stove and oven, and an acrylic sink with high-rise faucet.



Add a fireplace to help relax in style.

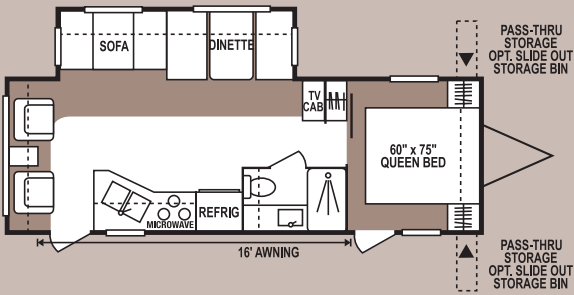


Retire to the comforts of your queen size bed featuring a plush Posteresst mattress, where you'll be tempted to hit the snooze-button just one more time, after staying up to watch some late-night TV. For your morning beauty routine, you can choose from a variety of bathroom configurations, all featuring skylights over the shower.

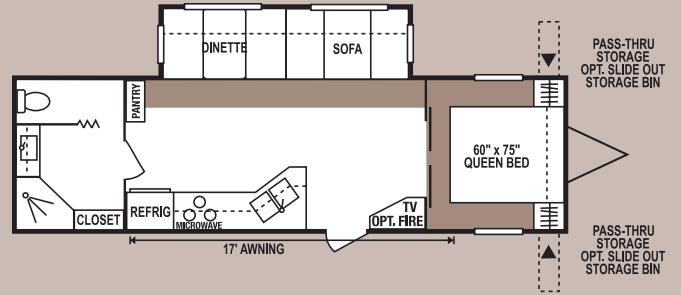


Mahogany

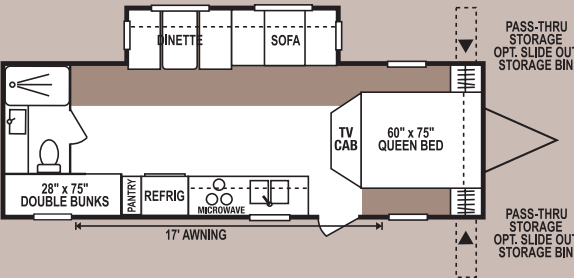
Travel Trailers



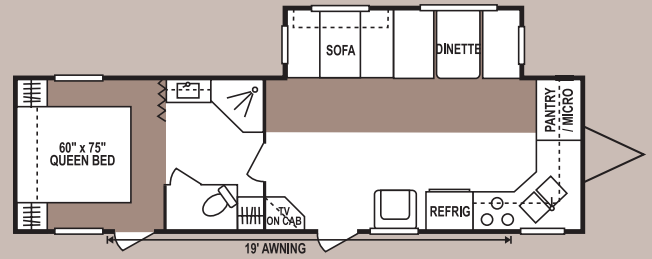
2604P • UVW 5690 • Dry Hitch Wt. 780 • NCC 4040 • Length 28'9"



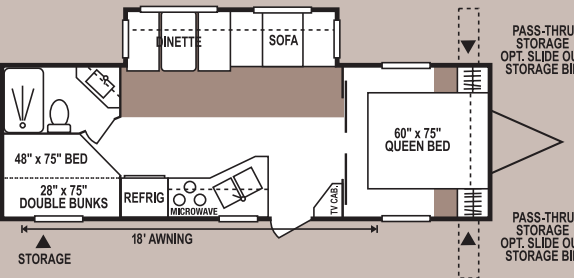
3008P • UVW 6440 • Dry Hitch Wt. 1120 • NCC 3560 • Length 30'6"



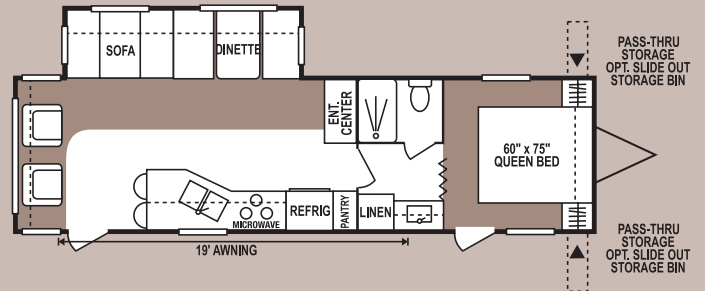
2807P • UVW 5960 • Dry Hitch Wt. 660 • NCC 4040 • Length 28'9"



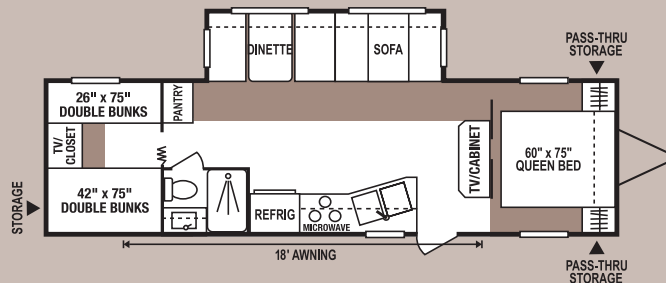
3102P • UVW 6740 • Dry Hitch Wt. 1150 • NCC 3260 • Length 31'8"



2903P • UVW 6080 • Dry Hitch Wt. 580 • NCC 3920 • Length 29'11"

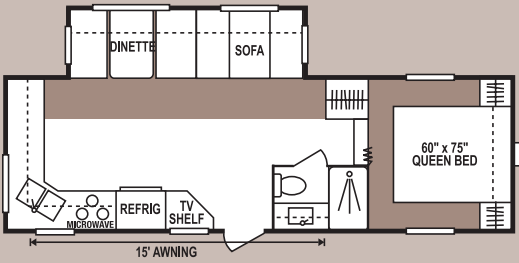


3103P • UVW 6850 • Dry Hitch Wt. 860 • NCC 3150 • Length 32'4"

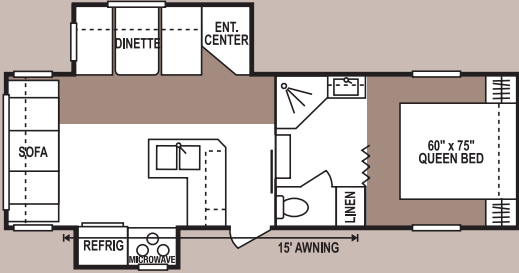


3204PSS • UVW 6880 • Dry Hitch Wt. 660 • NCC 3120 • Length 32'7"

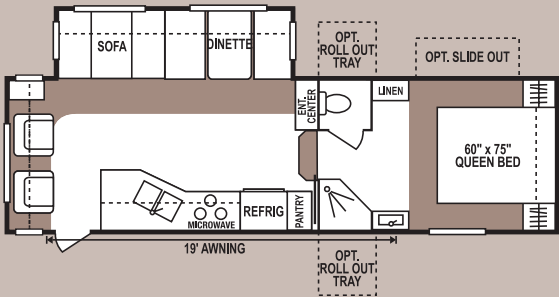
Fifth Wheels



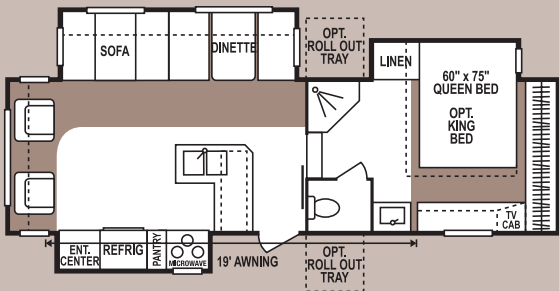
2452P • UVW 6500 • Dry Hitch Wt. 1380 • NCC 3500 • Length 26'5"
Medium profile



2457PX2 • UVW 7220 • Dry Hitch Wt. 1380 • NCC 2730 • Length 26'8"
Medium profile

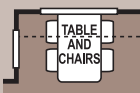


2856P • UVW 7020 • Dry Hitch Wt. 1300 • NCC 2980 • Length 30'1"
Stand up profile



2857PX3 • UVW 8240 • Dry Hitch Wt. 1900 • NCC 1760 • Length 32'8"
Stand up profile

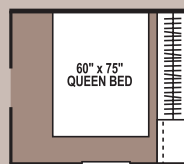
Options



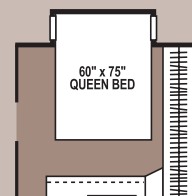
Option 4



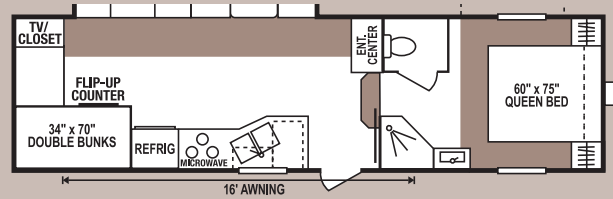
Option 5



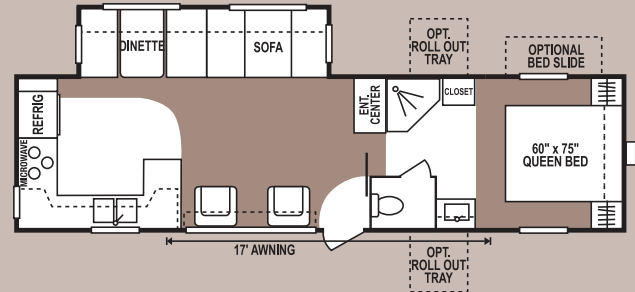
Option 6
(available on 2856P and 3052P)



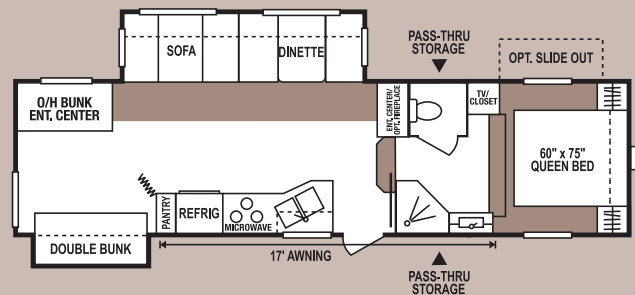
Option 7
Bedroom Slide Out
(available on 2856P, 2954P,
3052P and 3250PX2)



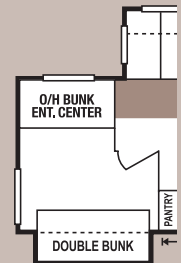
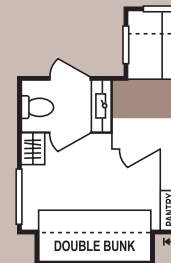
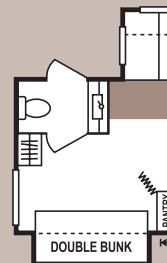
2954P • UVW 7340 • Dry Hitch Wt. 1100 • NCC 2660 • Length 31'11"
Stand up profile



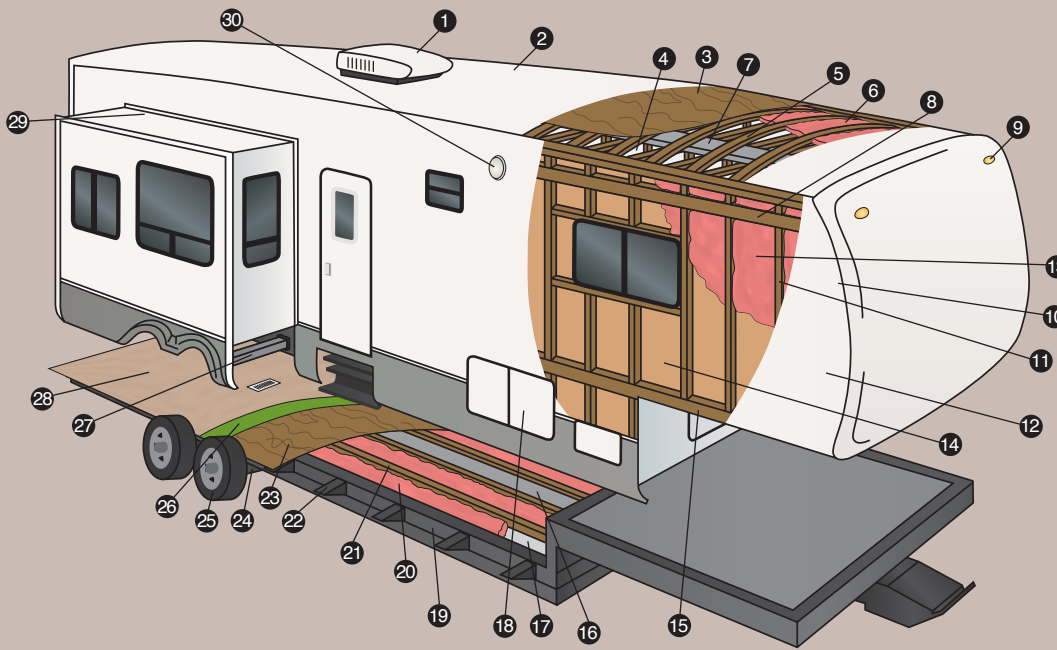
3052P • UVW 7510 • Dry Hitch Wt. 1700 • NCC 3490 • Length 31'7"
Stand up profile



3250PX2 • UVW 8770 • Dry Hitch Wt. 1590 • NCC 1730 • Length 32'5"
Stand up profile *Optional Second Bathroom and Solid Wall Options



***3250PX2** • Optional Second Bathroom • Solid Wall Options



Cut-Away Features

- 1 13,500 BTU A/C
- 2 TPO Vinyl Roof
- 3 3/8" Decking
- 4 Vinyl Interior Ceiling Panel
- 5 4 1/2" Wood Truss Rafters, 16" O.C.
- 6 R-7 Batten Insulation
- 7 Insulated Ductwork
- 8 1 1/2" x 5" Heavy Duty Laminated Wood Headers
- 9 Exterior Clearance and Brake Lights
- 10 2x2 Wood Frame Front and End Walls
- 11 2x2 Wood Studs, 16" O.C.
- 12 Metal Siding (standard)
- 13 R-7 Batten Insulation
- 14 Decorative Luan Wall Board
- 15 Single 8" Wood Stringer
- 16 Residential Style Ducted Heat Run in Floor
- 17 Darco® Moisture Barrier
- 18 Large Capacity Pass-Thru Exterior Storage with Radius Doors Front and Side for Easy Access
- 19 Heavy Duty I-beam Frame Construction
- 20 R-14 Batten Insulation
- 21 2x3 Wooden Floor Joists, 16" O.C.
- 22 Fully Welded Out Riggers
- 23 5/8" Tongue and Groove Plywood
- 24 Heavy Duty Leaf Spring Axles
- 25 Heavy Duty Steel Wheels with Trim Rings and Center Caps
- 26 Residential Style Carpet Pad
- 27 Rack and Pinion Electric Slide with Manual Override with 2x3 Box Tube Slide Out Ram
- 28 28 oz. Residential Carpet or Linoleum
- 29 Triple Sealed Slide Outs
- 30 Exterior Security/Scare Lights

Because it Rains!



Here at KZ we know a little bit about camping, actually we know a lot about camping. One thing you can count on, it will rain. We randomly test our KZ campers from every product line in our state of the art rain booth. The rain may spoil your fun outside, but it won't inside.

Sportsmen® Exterior Features



Fiberglass Exterior Siding with Aluminum Frame Construction (optional). Aluminum Siding with Wood Frame Construction (standard).



13,500 BTU A/C (standard)
15,000 BTU A/C (optional)



Tinted/Safety Windows (optional)



Enclosed Pinbox and Pinbox Extension (optional)



Exterior Shower (standard)



Assist Grab Handle (optional)



Exterior Security Light (optional)

Travel Trailers

	2604P	2807P	2903P	3008P	3102P	3103P	3204PSS
UVW (Unloaded Vehicle Wt.)	5960	5960	6080	6440	6740	6850	6880
Dry Hitch Wt.	780	660	580	1120	1150	860	660
Dry Axle Wt.	5180	5300	5500	5320	5590	5990	6220
NCC (Net Carrier Capacity)	4040	4040	3920	3560	3260	3150	3120
GVWR	10000	10000	10000	10000	10000	10000	10000
Exterior Height (w/ A/C)	129"	129"	129"	129"	129"	129"	129"
Exterior Length	28'9"	28'9"	29'11"	30'6"	31'8"	32'4"	32'7"
Exterior Width	96"	96"	96"	96"	96"	96"	96"
Refrigerator (cu.)	6	6	6	6	6	6	6
Water Heater Cap. (gal.)	6 G/E*	6 G/E*	6 G/E*	6 G/E*	6 G/E*	6 G/E*	6 G/E*
Fresh Water Cap. (gal.)	40	40	40	40	40	40	40
Waste Water Cap. (gal.)	32	32	32	32	32	32	32
Gray Water Cap. (gal.)	32	32	32	32	32	32	32
LP Gas Cap. (lbs.)	60	60	60	60	60	60	60
Furnace BTUs (1000's)	25	25	25	25	30	30	30
Tire Size	15"	15"	15"	15"	15"	15"	15"

* DSI Water Heater

Fifth Wheels

	2452P	2457PX2	2856P	2857PX3	2954P	3052P	3250PX2
UVW (Unloaded Vehicle Wt.)	6500	7220	7020	8240	7340	7510	8770
Dry Hitch Wt.	1380	1380	1300	1900	1100	1700	1590
Dry Axle Wt.	5420	5840	5720	6340	6240	5810	7180
NCC (Net Carrier Capacity)	3500	2730	2980	1760	2660	3490	1730
GVWR	10000	10000	10000	10000	10000	11000	10500
Exterior Height (w/ A/C)	136"	136"	149"	149"	149"	149"	149"
Exterior Length	26'5"	26'8"	30'1"	32'8"	31'11"	31'7"	32'5"
Exterior Width	96"	96"	96"	96"	96"	96"	96"
Refrigerator (cu.)	6	6	6	6	6	6	6
Water Heater Cap. (gal.)	6 G/E*	6 G/E*	6 G/E*	6 G/E*	6 G/E*	6 G/E*	6 G/E*
Fresh Water Cap. (gal.)	55	55	55	55	55	55	55
Waste Water Cap. (gal.)	32	32	32	32	32	32	50
Gray Water Cap. (gal.)	32	50	50	50	50	50	50
LP Gas Cap. (lbs.)	60	60	60	60	60	60	60
Furnace BTUs (1000's)	25	25	25	25	25	25	30
Tire Size	15"	15"	15"	15"	15"	15"	15"

* DSI Water Heater

Standard Package – Mandatory Living Package:

- DVD w/Surround Sound *
- Heated and Enclosed Underbelly
- Diamond Plate on Front End of Travel Trailers
- 13,500 BTU Ducted A/C
- Awning
- Microwave
- Pillows for Sofa
- Oven
- 6 Cu.' Refrigerator
- TV Shelf in Bedroom
- TV Antenna w/Booster
- Cable Hookup
- Tub Surround
- Night Shades
- Fluted Glass Doors in Slideouts
- Acrylic White Sink w/ High-Rise Faucet
- Raised Oak Mortise and Tenon Overhead Cabinet Doors
- Deluxe Roller Drawer Guides
- Deluxe Globe Dinette Light
- Fluorescent Light over Kitchen Sink w/Night Light
- Sink Cover
- Sky Light over Tub
- Porch Light on ODS
- Hitch Light
- Smoke Detector
- LP Detector
- CO Detector
- Chrome Rings and Caps
- Slideout Gas Bottle Trays
- 40 Gal. Fresh Water Tank
- Exterior Shower
- 6 Gal. Gas/Electric DSI Water Heater

Optional Designer Package:

- Sink Covers
- Stove Cover
- Bathroom Accessories
- Shower Door
- Posterest Mattress
- Foot-Flush Toilet
- Assist Grab Handle
- Enclosed Pin Box (Fifth Wheel)
- Stabilizer Jacks

Optional Designer Plus Package:

- 8 Cu.' Refrigerator w/Raised Oak Panel
- R14 Roof Insulation
- 40" Trunk Door in PSO *
- Fantastic Fan
- Slider Windows in PSO *
- Security Light on DS
- Black Tank Flush System
- Chrome Bumper Cover

Additional Options Available:

- Fiberglass Exterior w/ Aluminum Frame
- 15000 BTU A/C
- Hide-a-Bed *
- Ladder
- Power Jacks
- Pull Out Pantry *
- Recliner *
- Outside Grill
- Shocks
- Spare Tire
- Spare Tire Carrier
- Spare Tire Cover
- Table and Four Chairs
- Tinted Windows
- CSA (Canada Only)
- Remote Control Jacks (5th Wheels Only)

* where applicable

SPORTSMEN LX[®]

You'll know you've "arrived" when you travel to your destination in this classy Sportsmen LX by K-Z.



3551PX4 shown with Aspen décor and upgrade cherry wood

Comfy recliners, roomy sofa, fireplace – can it get any better? Slideout units make for a spacious living space.



Dining area, with table and four chairs, is separate from living space for a formal feel.



Mirrored storage cabinets add to the spacious feeling of the living room area.



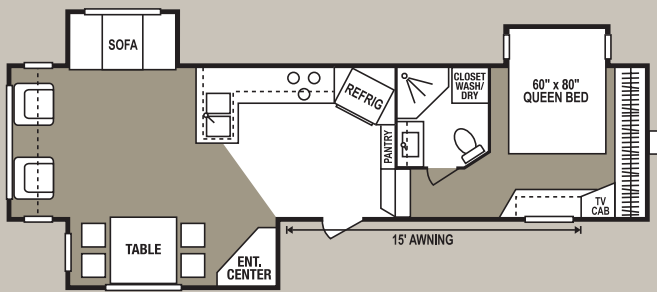
No cook should be without an island in the kitchen and an 8-cubic-foot refrigerator. Upgrade to cherry wood cabinets for an elegant look.



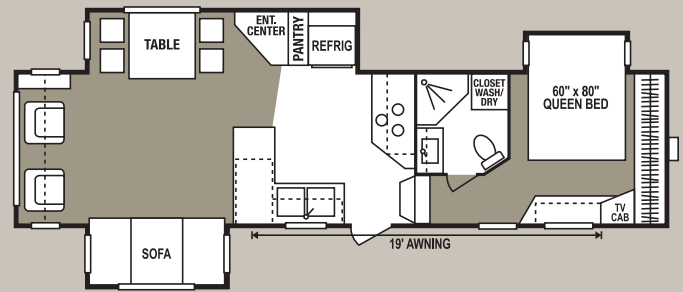
The fluorescent light above the sink can be switched down to a lesser intensity night light setting.



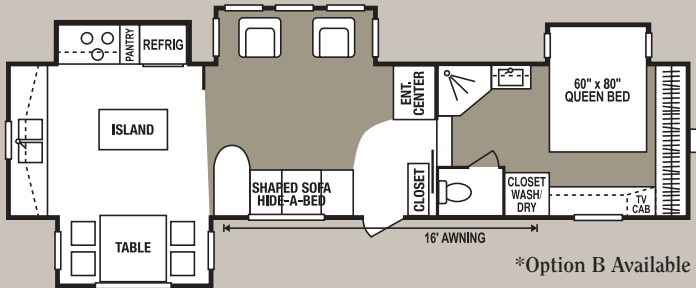
The beautiful coordination of bed and bath will pamper your body and senses. Plenty of wardrobe and cabinet space provide for your personal needs and the dual full length mirrored doors conceal additional storage or space for a washer/dryer.



3254PX3 • UVW 10410 • Dry Hitch Wt. 2180 • NCC 2590 • Length 35'8"



3354PX3 • UVW 10670 • Dry Hitch Wt. 1880 • NCC 3130 • Length 35'2"



3551PX4 • UVW 10880 • Dry Hitch Wt. 1940 • NCC 2920 • Length 35'6"

Designer Package: (forced option)

- Sink Covers
- Stove Cover
- Assist Grab Handle
- Postrest Mattress
- Foot-Flush Toilet
- Bathroom Accessories
- Stabilizer Jacks
- Enclosed Pin Box
- Snap Jacks

Designer Plus Package: (forced option)

- 8 Cu.' Stainless Steel Refrigerator w/Raised Oak Panel
- R14 Roof Insulation
- Black Tank Flush System
- Fantastic Fan
- Slider Windows in PSO
- Security Light on DS

LX Package: (forced option)

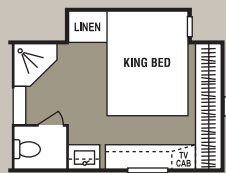
- Fiberglass Exterior
- 15000 A/C
- Hide-a-Bed
- Ladder
- Power Jacks
- Shocks
- TV
- 50 Amp Service

Mandatory Living Package: (forced option)

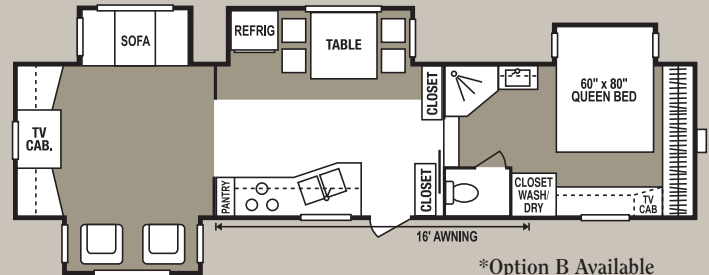
- AM-FM CD Player w/Surround Sound
- A/C
- Awning
- Microwave
- Pillow for Sofa
- Oven
- Refrigerator
- TV Shelf in Bedroom
- TV Antenna w/Booster
- Cable Hookup
- Tub Surround
- Night Shades
- Fluted Glass Doors in Slideouts
- Acrylic Sink w/High-Rise Faucet
- Deluxe Roller Drawer Guides
- Raised Oak Mortise and Tenon Overhead Cabinet Doors
- Two Lights by Sofa
- Deluxe Globe Dinette Light
- Fluorescent Light over Kitchen Sink w/Night Light over Sink
- Sink Cover

Additional Options Available:

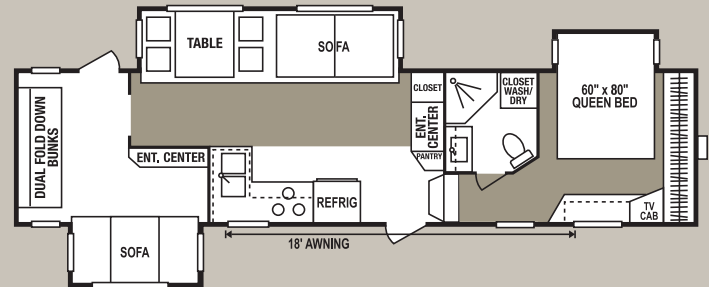
- Aluminum Wheels
- Outside Grill
- Cherry Wood
- Central Vac
- Fireplace
- Plumbing for Washer/Dryer
- Recliner
- Spare Tire
- Spare Tire Carrier



***King Size Bed Option**
Bathroom
(available on 3551PX4 and 3553PX4)



3553PX4 • UVW 10880 • Dry Hitch Wt. 1940 • NCC 2920 • Length 35'6"



3555PX3 • UVW 10480 • Dry Hitch Wt. 2450 • NCC 3320 • Length 38"

Fifth Wheels	3254PX3	3354PX3	3551PX4	3553PX4	3555PX3
UVW (Unloaded Vehicle Wt.)	10410	10670	10880	10880	10480
Dry Hitch Wt.	2180	1880	1940	1940	2450
Dry Axle Wt.	8230	8790	8940	8940	8030
NCC (Net Carrier Capacity)	2590	3130	2920	2920	3320
GVWR	13000	13800	13800	13800	13800
Interior Height	82"	82"	82"	82"	82"
Exterior Height (w/ A/C)	149"	149"	149"	149"	149"
Exterior Length	35'8"	35'2"	35'6"	35'6"	38"
Exterior Width	96"	96"	96"	96"	96"
Refrigerator (cu.)	8	8	8	8	8
Water Heater Cap. (gal.)*	10 G/E	10 G/E	10 G/E	10 G/E	10 G/E
Fresh Water Cap. (gal.)	55	55	55	55	55
Waste Water Cap. (gal.)	50	50	50	50	50
Gray Water Cap. (gal.)	50	50	50	50	50
LP Gas Cap. (lbs.)	60	60	60	60	60
Furnace BTUs (1000's)	30	30	30	30	30
Tire Size	16"	16"	16"	16"	16"

* DSI Water Heater

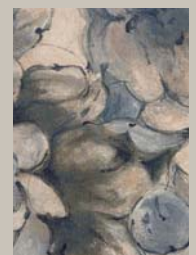
Amber



Aspen



Blue Ridge



SPORTSMEN® Destination Camping Models

	3705PX2	3803P	3803PX2
UVW (Unloaded Vehicle Wt.)	7840	7780	8724
Dry Hitch Wt.	1320	1100	1100
Dry Axle Wt.	6520	6680	7230
NCC (Net Carrier Capacity)	2160	2220	1670
GVWR	10000	10000	10000
Interior Height	82"	82"	82"
Exterior Height (w/ A/C)	129"	129"	129"
Exterior Length	37'8"	38'8"	38'8"
Exterior Width	96"	96"	96"
Refrigerator (cu.')	6	6	6
Water Heater Cap. (gal.)	6 G/E*	6 G/E*	6 G/E*
Fresh Water Cap. (gal.)	N/A	40	40
Waste Water Cap. (gal.)	32	32	32
Gray Water Cap. (gal.)	32	32	32
LP Gas Cap. (lbs.)	60	60	60
Furnace BTUs (1000's)	35	35	35
Tire Size	15"	15"	15"

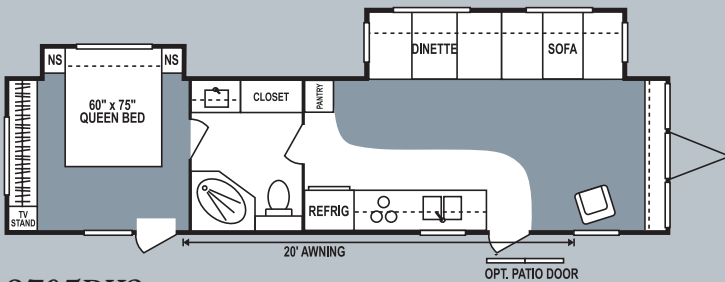
* DSI Water Heater

* Limited Models (all fiberglass) adds approximately 10% to total weight.

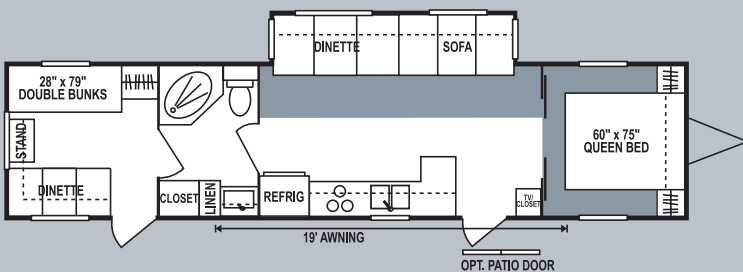
* Additional Slide Out Rooms each add approximately 500 lbs. to total weight.

Note: For Interior Decor Colors See Sportsmen Lite®

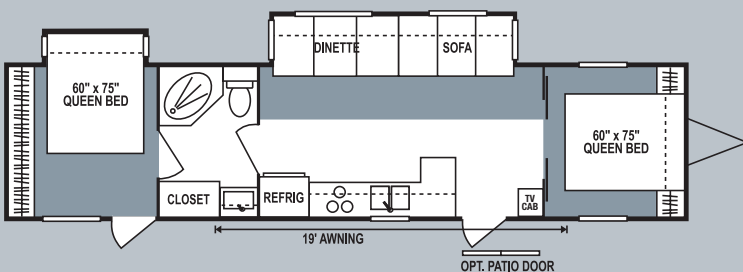
Destination Camping Models



3705PX2 • UVW 7840 • Dry Hitch Wt. 1320 • NCC 2160 • Length 37'8"



3803P • UVW 7780 • Dry Hitch Wt. 1100 • NCC 2220 • Length 38'8"



3803PX2 • UVW 8724 • Dry Hitch Wt. 1100 • NCC 1670 • Length 38'8"

Mandatory Living Package:

- Am-Fm CD Player w/ Four Speakers
- 13,500 BTU A/C Ducted
- Awning
- Microwave
- Pillows for Sofa
- Oven
- 6 Cu.' Refrigerator
- TV Shelf in Bedroom
- TV Antenna w/Booster
- Cable Hookup
- Tub Surround
- Night Shades
- Acrylic Kitchen Sink w/ High Rise Faucet
- Mirrored Doors in Slideouts
- Deluxe Roller Drawer Guides
- Deluxe Globe Dinette Light
- Raised Oak Mortise and Tenon Overhead Cabinet Doors
- Fluorescent Light over Kitchen Sink
- Wood Edge Countertop
- Sink Cover
- Sky Light over Tub
- Porch Light on ODS
- Hitch Light
- Smoke Detector
- LP Detector
- Chrome Rings and Caps
- Adjustable Jake Plate
- Exterior Shower
- 6 Gal. Gas/Electric DSI Water Heater

Optional Designer Package:

- Sink Covers
- Stove Cover
- Bathroom Accessories
- Shower Door
- Postrest Mattress
- Foot-Flush Toilet
- Assist Grab Handle
- Stabilizer Jacks

Optional Designer Plus Package:

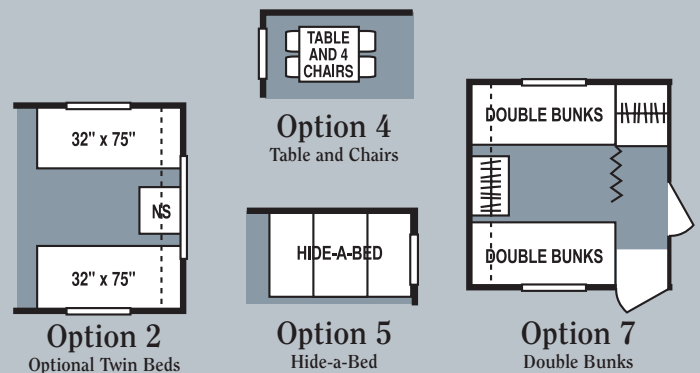
- 8 Cu.' Refrigerator w/ Raised Oak Panel
- R14 Roof Insulation
- 40" Trunk Door in PSO *
- Fantastic Fan
- Slider Windows in PSO *
- Security Light on DS
- Black Tank Flush System *
- Chrome Bumper Cover

Additional Options Available:

- Fiberglass Exterior
- 15,000 BTU A/C
- Ladder
- Power Jack
- Pull Out Pantry *
- 3 Windows on Front (4041P & 3705P)
- Recliner *
- Patio Door
- Outside Grill
- Shocks
- Spare Tire
- Spare Tire Carrier
- Spare Tire Cover
- Tinted Windows
- 110v House type Refrigerator
- House type Toilet (no tanks)
- CSA (Canada Only)

* where applicable

Featured Options



Featured Options Available:

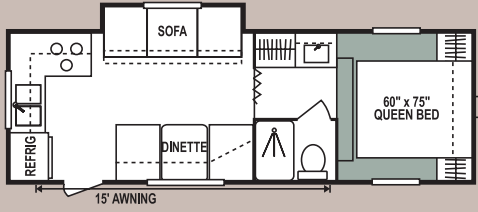
3705PX2: Options 4 & 5

3803P: Options 2, 4, 5 & 7

3803PX2: Options 2, 4 & 5

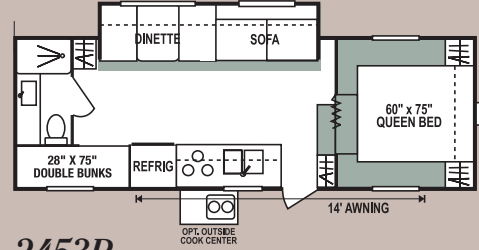
SPORTSMEN Lite®

Sportsmen®-Lite Fifth Wheels



2352P

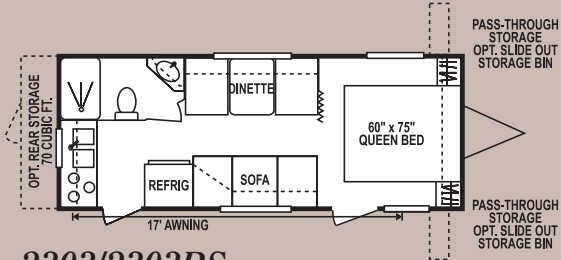
UVW 5224 • Dry Hitch Wt. 904 • NCC 1776 • Length 24'4"



2453P

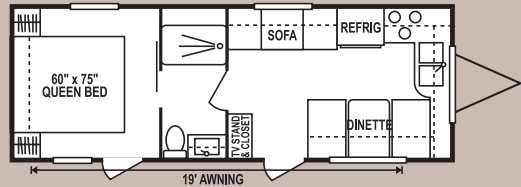
UVW 5550 • Dry Hitch Wt. NA • NCC 1450 • Length 26'10"

Sportsmen®-Lite Travel Trailers



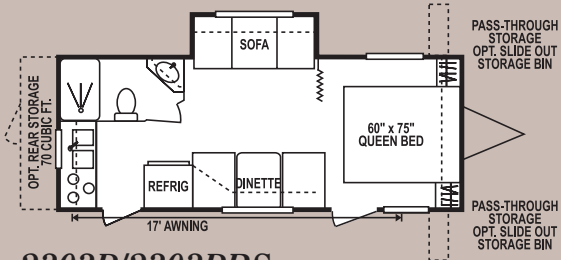
2303/2303RS

UVW 3583 • Dry Hitch Wt. 340 • NCC 1929 • Length 24'4"



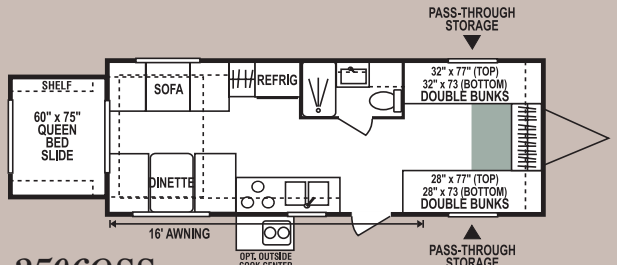
2503

UVW 4500 • Dry Hitch Wt. 600 • NCC 2368 • Length 26'3"



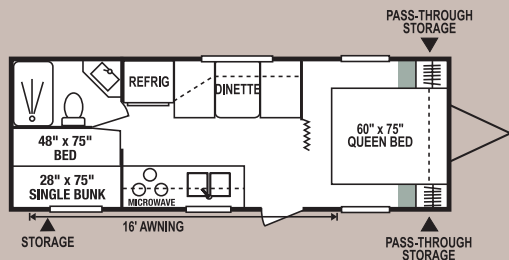
2303P/2303PRS

UVW 3583 • Dry Hitch Wt. 340 • NCC 1929 • Length 24'4"



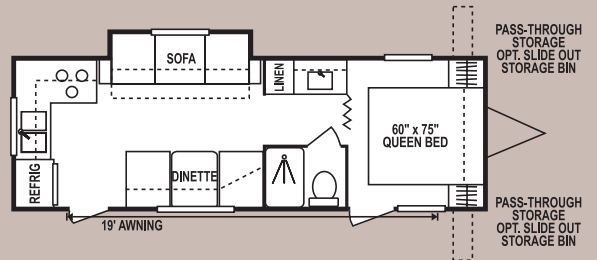
2506QSS

UVW 4951 • Dry Hitch Wt. 620 • NCC 1917 • Length 26'10"



2404

UVW 4310 • Dry Hitch Wt. 330 • NCC 1202 • Length 26'



2605P

UVW 5133 • Dry Hitch Wt. 400 • NCC 1735 • Length 27'9"

Destination Camping and Sportsmen®-Lite Décor

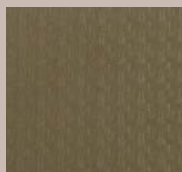
Contempo



Sienna



Mahogany



	2303	2303P	2404	2503	2505QSS	2605P	2352P	2453P
UVW (Unloaded Vehicle Wt.)	3570	4078	4260	4500	4638	4820	5224	5550
Dry Hitch Wt.	340	500	330	600	620	400	904	NA
Dry Axle Wt.	3230	3578	3930	3900	4018	4420	4310	NA
NCC (Net Carrier Capacity)	3430	2922	2740	2368	2362	2180	1776	1450
GVWR	7000	7000	7000	6868	7000	7000	7000	7000
Interior Height	78"	78"	78"	78"	78"	78"	78"	78"
Exterior Height	102"	102"	102"	102"	102"	102"	134"	134"
Exterior Length	24'4"	NA	26'	26'3"	26'10"	27'9"	24'9"	26'10"
Exterior Width	96"	96"	96"	94"	96"	96"	96"	96"
Refrigerator (cu. feet)	6	6	6	6	6	6	6	6
Water Heater Cap. (gal.)	6 G/E*	6 G/E*	6 G/E*	6 G/E*	6 G/E*	6 G/E*	6 G/E*	6 G/E*
Fresh Water Cap. (gal.)	40	40	40	40	40	40	55	55
Waste Water Cap. (gal.)	32	32	32	32	32	32	32	32
Gray Water Cap. (gal.)	32	32	32	32	32	32	32	32
LP Gas Cap. (lbs.)	60	60	60	60	60	60	60	60
Furnace BTUs (1,000s)	20	20	20	20	20	20	20	20
Tire Size	14"	14"	14"	15"	14"	14"	14"	14"

* DSI Water Heater

Standard Package – Mandatory Living Package

- 13,500 BTU Ducted A/C
- Awning
- Microwave
- Oven
- Stove Cover
- AM-FM Stereo w/CD Player
- Acrylic Sink w/High-Rise Faucet
- Outside Grill
- Double Step
- TV Antenna w/Booster
- Cable Hookup
- 6 Cu.' Double Door Refrigerator
- TV Shelf in Bedroom
- Night Shades
- Deluxe Roller Drawer Guides
- 30 lbs. Gas Bottles
- Exterior Shower
- Pillows for Sofa
- Sky Light over Tub
- Tub Surround
- Fluorescent Light over Kitchen Sink
- Bathroom Accessories
- Porch Light on ODS
- Hitch Light
- Smoke Detector
- LP Detector
- CO Detector
- Chrome Rings and Caps
- Raised Oak Mortise and Tenon Overhead Cabinet Doors
- 6 Gal. Gas/Electric DSI Water Heater w/ Winter By Pass Kit
- 40 Gal. Fresh Water Tank
- Heated and Enclosed Underbelly
- Diamond Plate on Front End of Travel Trailers
- Straight Axles

Additional Options Available

- Fantastic Fan
- Shower Door
- Foot-Flush Toilet
- Assist Grab Handle
- Battery and Box
- Tinted/Safety Windows
- Spare Tire
- Spare Tire Carrier
- Spare Tire Cover
- 15" Tires
- Chrome Bumper Cover
- Power Jack
- Stabilizer Jacks

2X2 WARRANTY – The K-Z 2x2 Warranty is a manufacturer's warranty. Each K-Z product is warranted to the original purchaser for twenty-four (24) months from the original date of purchase. Coverage includes appliances, components, construction and FULL structure. Our warranty is also transferable within the first two (2) years for a small processing fee. For a copy of the warranty with full terms and conditions, ask your local K-Z Dealer or visit our web site at <http://www.kz-rv.com>.

VEHICLE LOADING – Every effort has been made to provide the greatest number of options for the recreational owner. Each owner is responsible to select loads allowing the recreational vehicle to remain within the manufacturer's specified chassis weight limits. Do not overload the recreational vehicle.

UNLOADED VEHICLE WEIGHT (UVW) – The typical weight of this trailer as built at the factory. The UVW does not include cargo, LP gas, fresh water, options or dealer-installed accessories.

GROSS VEHICLE WEIGHT RATING (GVWR) – The maximum permissible weight of the trailer, including the UVW plus passengers, all cargo, personal items, fluids, options and dealer-installed accessories. The GVWR is equal to or greater than the sum of the UVW and the NCC.

NET CARRYING CAPACITY (NCC) – The maximum weight of all passengers, personal items, fresh water, food, tools, LP gas, other cargo and dealer-installed accessories* that can be carried by the trailer. NCC is equal to or less than GVWR minus UVW.

* The addition of options will decrease the NCC.

It is important for your safety and enjoyment that your tow vehicle be adequately sized and equipped to tow and handle the GVWR of the RV you select. Review weights and rating of your tow vehicle and consult a competent advisor for questions or advice. Whether you are new to RVing or a seasoned veteran, get a feel for the performance of your tow vehicle and the RV together before heading out on the roadways. When you tow an RV, you must drive differently than you do when driving a single vehicle. Practice hooking up, driving, backing up and braking in a safe environment or seek out professional instruction.

See specification chart above. K-Z affixes a weight label to each new RV which lists weight information for that vehicle.

NOTE: This information is intended as a guide only. Weights of individual vehicles are approximate. Consult your Owner's Manual for complete loading, weighing and towing instructions. All weights may vary.

Awarded to K-Z
six years in a row.



Dealer:

SPORTSMEN®



K-Z • 0985 N 900 W • Shipshewana, IN 46565
E-Mail kz@kz-rv.com • www.kz-rv.com

RVIA