



# Gooseneck / Bumperpull

- Floor Plans
- Available Models
- Standard Features

## **Overland Express LQ**

A division of JGL's Cargo Express, Inc.

708 S. Division Street • Bristol, IN 46507

Ph: 574-848-7441 • Fx: 574-848-9372

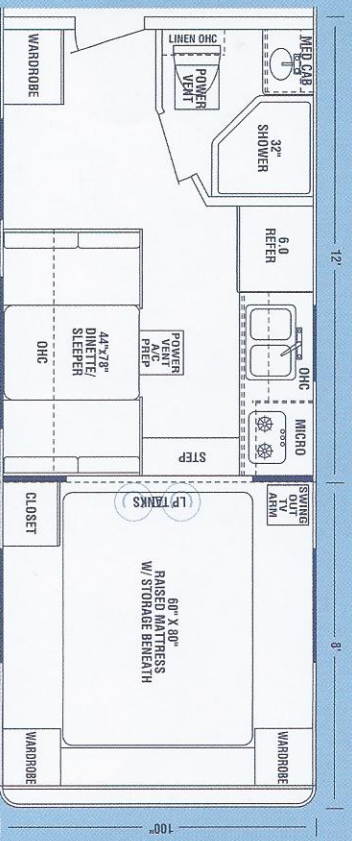
[www.OverlandExpressLQ.com](http://www.OverlandExpressLQ.com)

# Gooseneck Floorplans & Available Trailer Models

20RD-6

AVAILABLE TRAILER MODELS (20' LQ)

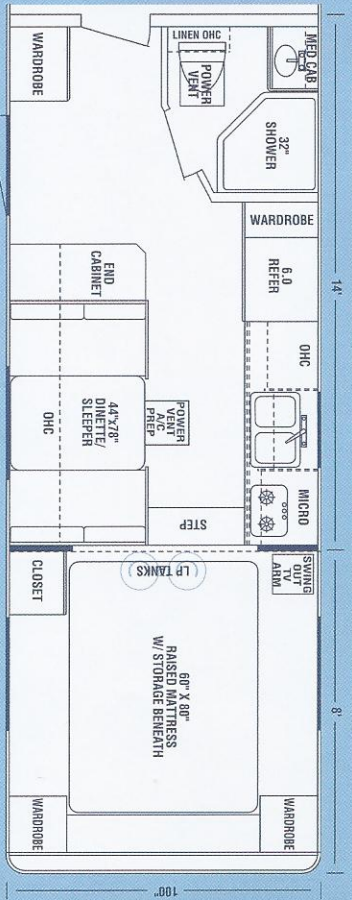
Axles	Model Number	Box Length	Garage Length	Overall Length
Dual	OE8634G-20RD6	26'	14'	34'
6000 #	OE8636G-20RD6	28'	16'	36'
	OE8638G-20RD6	30'	18'	38'
Triple	OE8640G-20RD6	32'	20'	40'
5200 #	OE8642G-20RD6	34'	22'	42'
	OE8644G-20RD6	36'	24'	44'
Triple	OE8646G-20RD6	38'	26'	46'
6000 #	OE8648G-20RD6	40'	28'	48'



22RD-6

AVAILABLE TRAILER MODELS (22' LQ)

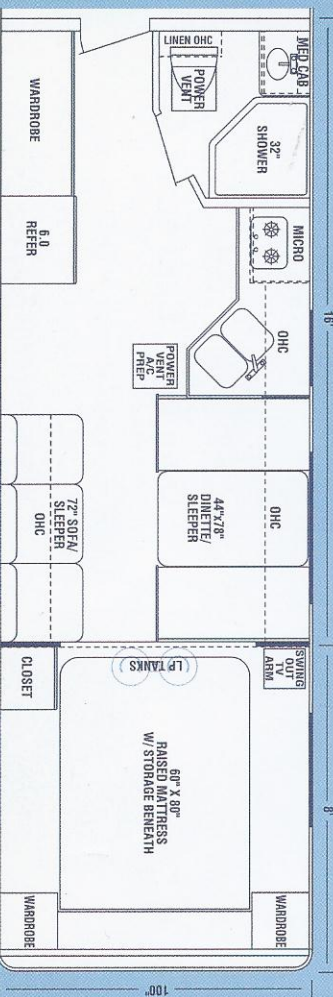
Axles	Model Number	Box Length	Garage Length	Overall Length
Dual	OE8636G-22RD6	28'	14'	36'
6000 #	OE8638G-22RD6	30'	16'	38'
Triple	OE8640G-22RD6	32'	18'	40'
6000 #	OE8642G-22RD6	34'	20'	42'
	OE8644G-22RD6	36'	22'	44'
	OE8646G-22RD6	38'	24'	46'
	OE8648G-22RD6	40'	26'	48'
	OE8650G-22RD6	42'	28'	50'



24RD-6

AVAILABLE TRAILER MODELS (24' LQ)

Axles	Model Number	Box Length	Garage Length	Overall Length
Dual	OE8638G-24RD6	30'	14'	38'
6000 #	OE8640G-24RD6	32'	16'	40'
Triple	OE8642G-24RD6	34'	18'	42'
6000 #	OE8644G-24RD6	36'	20'	44'
	OE8646G-24RD6	38'	22'	46'
	OE8648G-24RD6	40'	24'	48'
	OE8650G-24RD6	42'	26'	50'

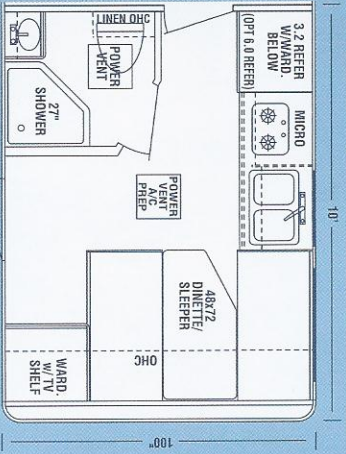


# Bumper Pull Floorplans & Available Trailer Models

## 10RD-3

### AVAILABLE TRAILER MODELS (10' LQ)

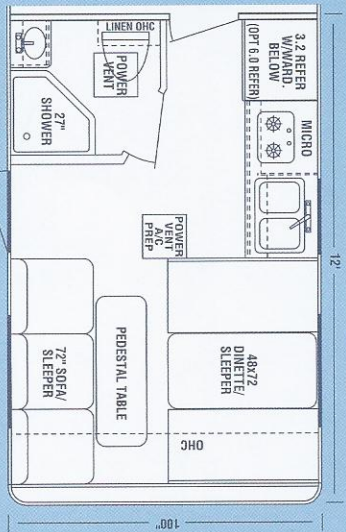
Axles	Model Number	Box Length	Garage Length
Dual	OE8622B-10RD3	22'	11' 6"
5200#	OE8624B-10RD3	24'	13' 6"
	OE8626B-10RD3	26'	15' 6"
Dual	OE8628B-10RD3	28'	17' 6"
6000#	OE8630B-10RD3	30'	19' 6"
	OE8632B-10RD3	32'	21' 6"



## 12RD-6

### AVAILABLE TRAILER MODELS (12' LQ)

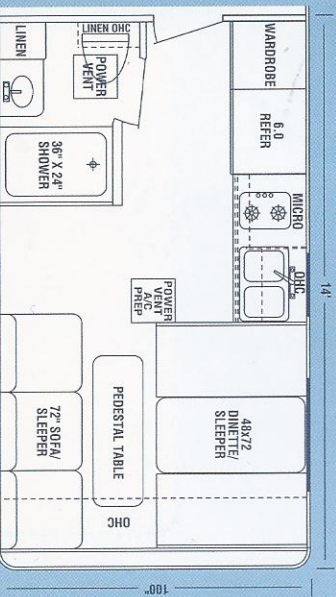
Axles	Model Number	Box Length	Garage Length
Dual	OE8624B-12RD6	24'	12'
5200#	OE8626B-12RD6	26'	14'
Dual	OE8628B-12RD6	28'	16'
6000#	OE8630B-12RD6	30'	18'
	OE8632B-12RD6	32'	20'
	OE8634B-12RD6	34'	22'



## 14RD-6

### AVAILABLE TRAILER MODELS (14' LQ)

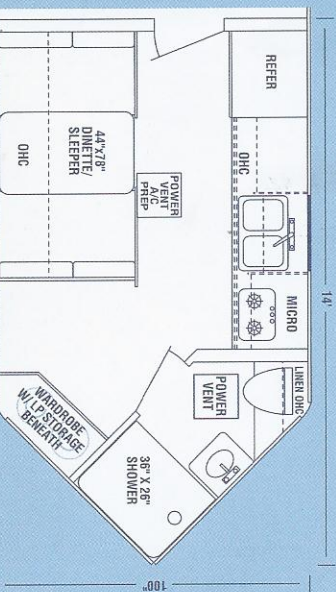
Axles	Model Number	Box Length	Garage Length
Dual	OE8626B-14RD6	26'	12'
5200#	OE8628B-14RD6	28'	14'
	OE8630B-14RD6	30'	16'
	OE8632B-14RD6	32'	18'
	OE8634B-14RD6	34'	20'



## 14WF-6

### AVAILABLE TRAILER MODELS (14' LQ V-Nose)

Axles	Model Number	Box Length	Garage Length	Overall Length
Dual	OE8622B-14WF6	22'	12'	26'
5200#	OE8624B-14WF6	24'	14'	28'
	OE8626B-14WF6	26'	16'	30'
Dual	OE8628B-14WF6	28'	18'	32'
	OE8630B-14WF6	30'	20'	34'
	OE8632B-14WF6	32'	22'	36'



## Trailer Standard Features

### Frame

- 2 5/16" coupler (B.P. only)
- Adjustable 2 5/8" coupler (G.N. only)
- Dual Landing Gear (G.N. only)
- Bogy Casters (26" and over)
- Integral structured trailer body with tubular steel main frame and floor joist-16" o.c. (24" o.c. in living area). Tubular steel side posts and roof joist-16" o.c.
- Safety chains bolted
- Tough corrosion resistant frame paint

### Axles & Tires

- Dexter rubber torsion axles
- Easy lube hubs
- Premium tires with silver mod wheels
- Electric brakes with rechargeable breakaway battery

## Living Quarters Standard Features

### RV Construction Features

- Fully insulated sidewalls
- Residential floor vinyl
- Padded ceiling vinyl
- Decor wall panel-3.6 c.m.
- Partition wall with pass through door
- "Homestyle" cabinetry with oak wrapped solid wood stiles
- Solid-oak Cathedral-style doors w/flat panel
- Full length awning rail

### RV Livability Features

- Clock
- Color coordinated decor color groups
- Baggage door (per plan)
- Wardrobe closet (per plan)
- Oversized dinette/sleeper
- Sofa/sleeper (per plan)
- JAL windows-tinted
- Egress JAL window-tinted
- Mini blinds with valance and side curtains
- Decor mirror

### Kitchen Features

- Edged countertop
- Kitchen base with shelf and drawers
- Vented range hood w/fan and light
- Double bowl sink w/cover
- 2 Burner cooktop w/cover
- 1 Cu. Ft. Microwave
- Towel ring
- 6 Cu. Ft. Refrigerator-2 way (3 Cu. Ft. per plan)

### Trailer & Exterior Features

- Smooth .030 aluminum exterior-no fasteners (see memo on color limitations and screw options)
- Exterior graphics
- 1-piece seamless aluminum roof
- Sealed markers and tail lights-DOT approved
- Marker lights 4' o.c.
- Aluminum fenders and ATP lined fender wells
- ATP Enclosed GN gussets with access door
- Fused trailer electrical circuits
- Enclosed and sealed wiring run overhead
- Top wind jack (BP only)

### Garage Interior Features

- 3/4" Poly-Urethane impregnated flooring (20 year rated)
- Insulated ceiling and walls (premium blue board)
- 1/4" White vinyl interior-garage area
- 2-Way directional air vents-1 pair in garage area

### Gooseneck Features (G.N. only)

- Front wardrobe and night stand
- Mirror inserts in front wardrobe doors
- Raised mattress platform w/storage beneath
- 60X80 Queen innerspring mattress
- Bed spread
- Side wardrobe
- Privacy curtain
- 51" G.N. Interior height (with 12" raised ceiling)

### Entertainment Features

- TV antenna and cable TV ready
- TV stand

### Bath Features

- Large shower with curtain
- Medicine cabinet
- Vanity with sink and faucet
- Powered fan and switch
- Towel bar, TP holder
- RV toilet
- Linen cabinet
- Mirror on door

### Electrical System

- Decorator 12-Volt ceiling lights
- 12-Volt porch light
- 45-Amp 110 12-Volt converter w/1-RV battery box and power cord (no battery)
- 110-Volt receptacles (per plan)
- Battery disconnect
- Charge line from truck

- 2 12-Volt lights with switch

### Garage Interior Features

- Choice of beaver tail or flat floor
- Wide body construction
- 84" interior height
- Non-powered roof vent in garage (A/C ready)
- Fully finished interior
- 4 D-rings
- 110-Volt receptacle

### Doors

- RV Door with obscure window, screen and pull-out step
- Ramp door w/spring assist
- Zinc coated hinges and cam bars

### Limited 3-year Warranty

### LP Gas & Plumbing System

- Decorator faucets
- 6-Gallon DSL water heater
- 2-30# LP tanks and system
- City and gravity water fill
- Fresh water storage
- Gray and black water tanks
- 12-Volt demand water pump
- Winterizing bypass & antifreeze injector
- Exterior faucet
- Sewer hose and storage

### Safety and Comfort Features

- RVIA seal
- Power vent-A/C ready
- Forced air furnace
- LP gas, CO2, smoke detector and fire extinguisher
- Fire extinguisher in garage
- GFI protected circuits
- Limited 1-Year Warranty

All information and features listed in this flyer are based upon the latest product specifications during the time of publication. Therefore, we reserve the right at any time to make modifications to prices, colors, materials, equipment and specifications without notice and assume no responsibility for any error in this publication. Please see your authorized dealer for more complete details. Photos may have options.

Dealer:

**Jerry's Trailers & Campers**  
2601 South 13 St.  
Norfolk, NE 68701  
(402) 371-1306