

Trail-Lite

BY R-VISION



Adventure comes standard.

INTERIOR



Shown with Antique Fabric

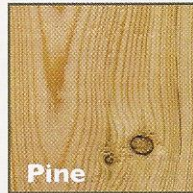
Cinnabar

(Also Available)



Banak

Hardwood, light-weight, 99% knot free; 1/3 the weight of pine. Used in framing cabinets for the Trail-Lite.



Pine

Used in framing cabinets by other RV manufacturers.



Trail-Lite Benefits

SUPER LIGHT WEIGHT

- Safe, easy, fuel efficient towing

ENCLOSED UNDERCARRIAGE

- Improves fuel efficiency significantly, improves appearance, allows for much more interior storage space, better insulation and heated holding tanks. Corrosion free underbelly for effortless towing, low maintenance.

LAMINATED ALUMINUM FRAMED CONSTRUCTION

- Superior strength, light weight and exceptional durability

AERODYNAMIC MOLDED FRONT LP BOTTLE COVER

- Protects LP bottles and battery.

LOWER CENTER OF GRAVITY

- Stable, safe towing with today's down sized tow vehicles.

INDEPENDENT TORSION SUSPENSION SYSTEM WITH RADIAL TIRES

- Unsurpassed towing stability with EZ-Lub™ hubs

ONE-PIECE STEEL CHASSIS (POWDER COATED)

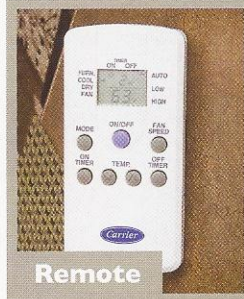
- Not bolted together, welded for extra strength

BED STORAGE

- Storage tubs under queen beds with access doors
- Tackle box under bed storage with 2 large tubs

6'6" INTERIOR HEIGHT

- Spacious feeling



Remote



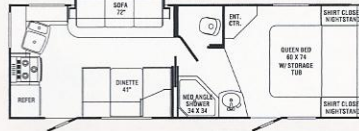
Air Unit



8230



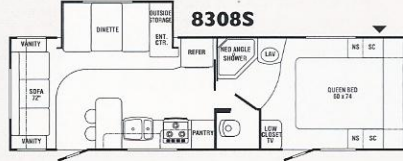
8250S



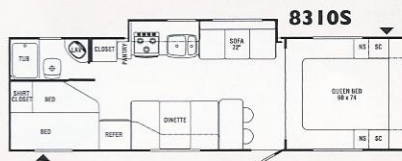
8263S



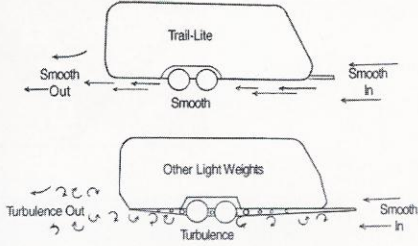
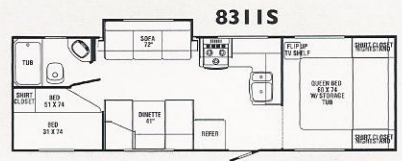
8308S



8310S



8311S



Trail-Lite uses modern race car technology to bring you towing ease and stability. Trail-Lite's enclosed chassis is clear of the exposed holding tanks, crossmembers and outriggers that create turbulence when the trailer is towed. Airflow is smooth and drag is greatly reduced. Towing a Trail-Lite is a breeze!

	8230	8250S	8263S	8308S	8310S	8311S
Length	24'1"	28'3"	27'1"	30'9"	31'6"	30'3"
Width (w/o Awning)	96"	96"	96"	96"	96"	96"
Height (w/AC)	9'10"	9'10"	9'10"	9'10"	9'10"	9'10"
Awning Length	15'	20'	18'	20'	20'	21'
*Hitch Dry Wt. (Appr.)	311	566	350	424	598	605
*Axle Dry Wt. (Appr.)	3160	3930	3972	4738	4162	4034
GVWR	7311	7560	7350	7424	7598	7605
Total Dry Wt.	3471	4496	4322	5162	4760	4839
Load Cap.	3840	3070	3028	2262	2838	2966
Tire Size	205/75 14C	205/75 14C	205/75 14C	205/75 14C	205/75 14C	205/75 14C
Fresh Water Tank Cap.	40	40	40	40	40	40
Grey Water Cap.	40	40	40	40	40	40
Black Water Cap.	40	40	40	40	40	40

SPECIFICATIONS

APPLIANCES/EQUIPMENT

- Dometic Flush Mount Refrig.
- 3 Burner Range Top
- Power Range Hood w/Light
- Six Gallon DSI Water Heater
- Furnace 30,000 BTU (20,000 BTU on Model 8230)
- Air Conditioner Ready
- Water Heater Bypass Kit
- Demand Water Pump
- Laminated Galley Top w/Double Stainless Sink and Euro Style Faucet
- Copper LP Gas Lines
- P.E.X. Water Lines
- Monitor Panel

BATH

- Fiberglass Reinforced Tub
- Shower Curtain w/Valance
- Skylight Standard
- Thetford Toilet
- Medicine Cabinet w/Mirror
- Towel Bar, Toothbrush Holder and Tissue Holder
- Power Roof Vent
- Light w/Wall Switch
- Large Bath Sink
- Full Tub
- Skylight

ELECTRICAL

- Patio Light w/Amber Lens
- Ceiling Lights w/Wall Switches
- 120 Volt GFI Protected Circuits
- 120 Volt Fuse Panel
- Outside 120 Volt Recept

- 30 Amp, 28' Power Cord (Detachable)
- 55 Amp, Whisper Quiet Converter w/Charger
- Battery Box w/Positive Ventilation
- Pre-Wired for Air Conditioner
- Pre-Wired for Microwave Exterior

EXTERIOR

- Rubber Roof
- Tinted Jalousie Windows
- Aerodynamic Front Profile
- Flush Mount Front Window/Awning
- 26" Entry Door(s) w/Radius Corners, Window, Screen Door, and Flush Mount Latch
- Locking Baggage Doors
- Self-Storing Step(s) (Powder Coated)
- Large Front Storage Compartment
- Enclosed 30# LP Tanks
- 2-5/16" Coupler
- Break-away Switch
- Enclosed, Heated Underbelly
- Easy Access Dump Valves

INTERIOR

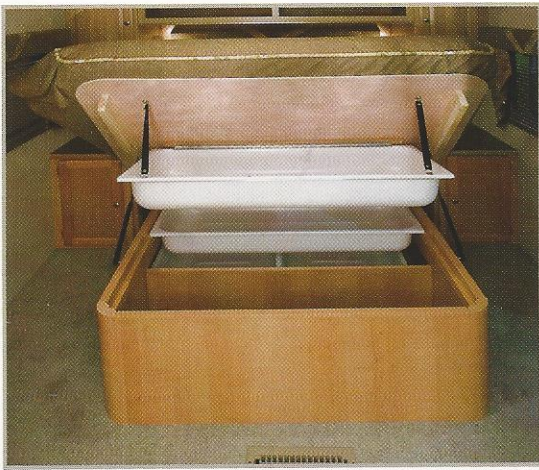
- Panoramic Galley Window
- Reversible Dinette Cushions
- Mini Blind at Galley
- No-wax Vinyl Flooring
- Mortise and Tenon Cabinet Doors
- Hidden Plumbing and Wiring
- High Pressure, Laminated Plywood Countertops
- Queen Bed w/Quilted Pillow Top Bedspread
- Light/Air Roof Vent(s)
- Fire Extinguisher, Smoke Detector, LP Detector
- Cabinets and Slide-Out Facia

- Large Residential Kitchen Sink
- Designer Radiused Window Treatment
- Under Bed Storage w/Struts

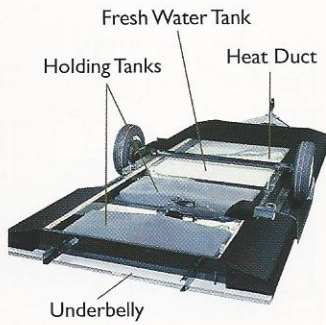
RUNNING GEAR

- 14" Radial Trailer Tires
- White Spoke Wheels w/10" Electric Brakes
- Independent Torsion E-Z Lube Hubs Suspension System, Rubber Ride
- Welded I-Beam, Steel Frame

OPTIONS	APPROX. WT. (LBS.)
Air Conditioning, 13,500 BTU	104
Air Conditioning, 15,000 BTU	110
AM/FM CD Player	4
Awning, A & E	40-60
Swivel Rocker Chair	35
Microwave	30
Oven	30
Spare Tire & Wheel	35
Stabilizer Jacks (Four)	24
TV Antenna/Cable/Satellite Ready	6
Roof Ladder	5
Outside Grill	15
Outside Shower	3
Outside Sliding Drawer	36
Sink Cover	1
Stove Cover	1
Tub Surround	10
Double Entry Step	7
Chrome Trim Rings w/Cap	3
Fan-Tastic Fan	15
2 Bar Stools	20



UNDER THE
BED STORAGE



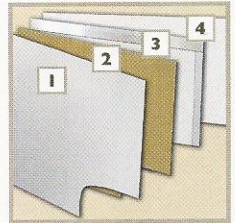
LIFTCO SLIDE-OUT

High quality slide-out.
Welded steel framework
strengthens slide-out
openings.



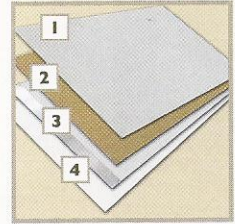
**SIDEWALL • 2" THICK
LAMINATE R-7**

1. Fiberglass Skin - dent resistant,
low maintenance
2. Luan
3. Aluminum Frame and Foam
4. Wallboard



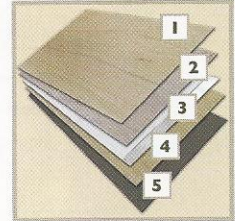
ROOF • 3" LAMINATE R-13

1. Rubber Roof
2. Luan
3. Aluminum Frame and Foam
4. Ceiling Board



**FLOOR • 2" THICK
LAMINATE R-7**

1. Luan
2. Luan
3. Aluminum Frame and Foam
4. Luan
5. Darco



TOWING GUIDE

Listed below are tow ratings that are the highest available for the respective 2006 models. Certain optional equipment may be required and other restrictions may apply. Check with your automotive dealer for exact specifications.

VEHICLE	ENGINE	TOW LIMIT	F350 SC DRW 4WD	6.8LV-10	15,000	Pathfinder	4.0LV-6	6000
Acura			F350 CC DRW 4WD	6.0LTD	18,100	Quest	3.5LV-6	3500
MDX	3.5LV-6	4500/3500	Honda			Titan KC	5.6LV-8	9400
Buick			Odyssey	3.5LV-6	3500	Xterra	4.0LV-6	5000
Rainier RWD	4.2L I-6	6300	Pilot	3.5LV-6	3500/4500	Pontiac		
Rendezvous	3.5LV-6	3500	Ridgeline	3.5LV-6	5000	Montana	3.5LV-6	3500
Terraza	3.9LV-6	3500	Hummer			Torrent	3.4LV-6	3500
BMW			H2	6.0LV-8	6700	Porsche		
X3 3.0i	3.0L I-6	3500	H3	3.5L I-5	4500	Cayenne	All	7716
X5 4.8is	4.8LV-8	6000	Hyundai			Saab		
Cadillac			Santa Fe 2WD pass.	3.5LV-6	3000	9-7X	5.3LV8	6500
Escalade AWD	6.0LV-8	8100	Infiniti			Subaru		
SRX	4.6LV-8	4250	FX	ALL	3500	B9 Tribeca	F-6	3500
Chevrolet/GMC			QX56 AWD	5.6LV-8	8900	Forrester	F-4	2400
Colorado/Canyon			Isuzu			Suzuki		
Ext. Cab 2WD	3.5L I-5	3600/4000	Ascender 7 pass. 4WD	5.3LV-8	6200	Grand Vitara	2.7LV6	3000
Equinox	3.4LV-6	3500	i350 Crew Cab P/U	3.5L I-5	4000	XL-7	2.7LV6	3000
Uplander	3.5LV-6	3500	Jeep			Toyota		
Avalanche 1500 4WD	5.3LV-8	7100	Commander 4WD	5.7LV8	7200	4Runner 4WD	4.7LV-8	7000
Avalanche 2500 4WD	8.1LV-8	1200	Grand Cherokee	5.7LV8	7200	Highlander	2.4L I-4	3000
1500 Reg Cab SWB 2WD	8.1LV-8	8400	Liberty 4WD	2.4L I-4	2000	Highlander Hybrid	3.3LV6	3500
2500 CC SWB 4WD	6.6LTD	12,000/14,200	Wrangler	4.0L I-6	2000	Land Cruiser	4.7LV8	6500
3500 CC SRW 4WD	8.1LV-8	12,000/15,000	Kia			Sienna	3.3LV6	3500
3500 CC DRW 4WD	6.6LTD	12,000/16,000	Sorento	3.5LV-6	3500	Sequoia 4WD	4.7LV8	6200
Tahoe/Yukon 4WD	5.3LV-8	7700	Land Rover			Tacoma Access Cab	4.0LV6	6500
Suburban/Yukon XL 4WD	5.3LV-8	8200	Freelander	2.5LV6	2500	Tundra Reg Cab 2WD/4WD	4.7LV8	7100
Suburban/Yukon XL 4WD	8.1LV-8	10,300	Range Rover Sport	All	7716	Touareg	All	7716
Trailblazer/Envoy SWB 4WD	5.3LV-8	6600/6500	Lexus			S80	2.5L I-5	3300
Daimler Chrysler			RX330	3.3LV-6	3500	XC90	All	5000
T & C,			GX 470	4.7LV8	6500			
Caravan/ Grand Caravan	3.3LV-6	3600	Lincoln-Mercury					
T & C,			Mark LT 4WD	5.4LV8	8600			
Caravan/ Grand Caravan	3.8LV-6	3800	Mariner	3.0LV6	3500			
Dakota CC 2WD	4.7LV-8	5500	Mountaineer AWD 5 pass.	4.6LV8	7060			
Durango 4WD	4.7LV-8	7200	Navigator 4WD	5.4LV8	8300			
Durango 4WD	5.7LV-8	7150	Mazda					
Magnum	5.7LV-8	3800	B4000 4WD	4.0LV-6	5580			
Ram 1500 Reg Cab SB 2WD	4.7LV-8	6650	Tribute	3.0LV-6	3500			
Ram 1500 Reg Cab SB 2WD	5.7LV-8	8000	Mercedes-Benz					
Ram 2500 QC SB 4WD	5.9LTD	13,000	G-500	V-8	7842			
3500 QC LB DRW 4WD	5.9LTD	15,400	ML 500	V-8	7842			
Ford			Mitsubishi					
Ranger SC Short Box, 2WD	4.0LV-6	5860	Endeavor	3.8LV-6	3500			
Ranger SC Short Box, 4WD	4.0LV-6	5580	Montero	3.8LV-6	5000			
Escape	3.0LV-6	3500	Raider Ext. Cab 2WD	4.7LV-8	5400			
Explorer 4WD, six pass.	4.6LV-8	7050	Raider Ext. Cab 4WD	3.7LV-6	3950			
Expedition 4WD	5.4LV-8	8600	Nissan					
Explorer Sport Trac 4WD	4.0LV-6	5080	Armada 4WD	5.6LV-8	9000			
FI 50 Reg. Cab LWB 2WD	5.4LV-8	8800	Frontier					
FI 50 SuperCrew LWB 4WD	5.4LV-8	9100	KC SE, LE, Nismo 4WD	4.0LV-6	6300			
			Murano	3.5LV-6	3500			

GENERAL WARRANTY INFORMATION*

- Rubber Roof..... 12 Years
- Fiberglass Skin..... 2 Years
- Powder Coated Chassis..... 1 Year
- Structure..... 2 Years
- Norcold Appliances..... 3 Years
- Atwood Appliances..... 2 Years
- Liftco Slideout Mechanism..... 1 Year
- Suspension System..... 5 Years
- General Camper Coverage..... 1 Year

* Refer to specific written warranty statement



Our 58 acre
complex in
Warsaw,
Indiana

R-Vision, Inc.
2666 S. Country Club Drive
Warsaw, IN 46580
(574) 268-2111
www.trail-lite.com

As R-Vision constantly strives to improve our product, all specifications listed in this informative brochure are subject to change without notice or obligation. Photos may show optional equipment which is not included in the purchase price of the unit. Test drive and review a current model on your dealer's lot today.

DEALER

Jerry's Trailers & Campers, Inc.
2601 South 13th St.
Norfolk, NE 68701
(402) 371-1306
www.jerrystrailers.com