

Go your own way.

SPRINTER COPPER CANYON

Travel Trailers and Fifth Wheels

2006

by Keystone



Go your own way. And Sprinter will get you there.

Introduced as Keystone RV's first product line in 1996, Sprinter's goals have always been ambitious: give our customers an exceptional RV experience from a unique RV company.

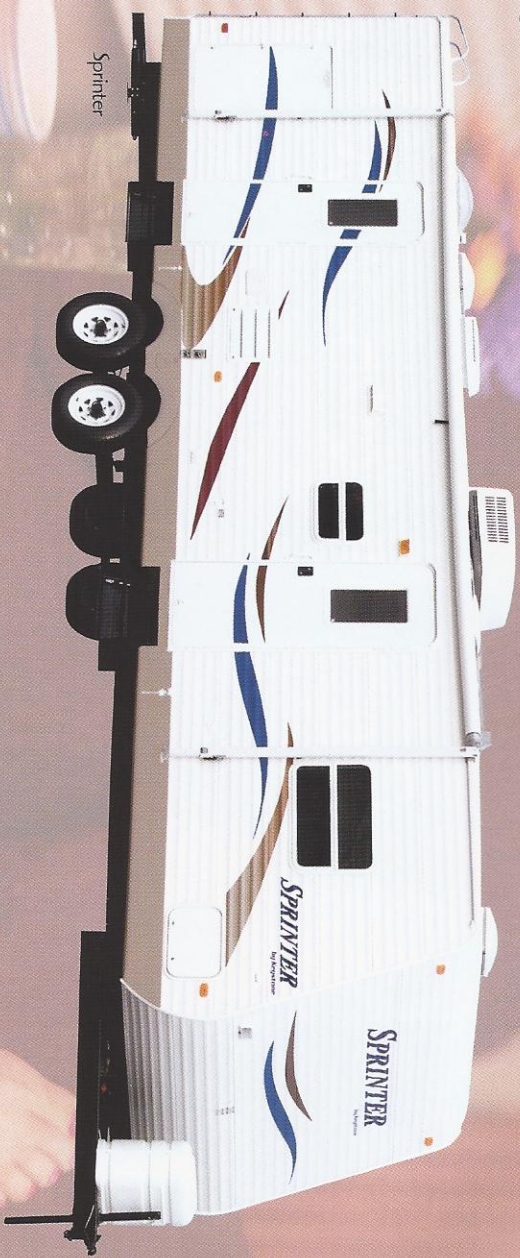
To achieve success, our team understands the importance of listening to the customers who daily use the product, taking their suggestions and making those recommendations the foundation of Sprinter design.

Consumer-driven design distinguishes Sprinter from other brands. First and foremost, we offer storage, storage and more storage! From Sprinter's original space-maker fresh water system to the abundant amount of interior cabinet space, Sprinters have more interior and exterior storage than ANY other brand in its class.

We also focus our attention on Sprinter's residential comforts and interior styling. We incorporate the latest home trends with solid-wood, raised-panel cathedral cabinet doors, high-arched metal faucets and plush camelback sofas. In looks and design, Sprinter provides American beauty in a true second home.

Our team maintains the vision to build the Sprinter with a customer's budget in mind. We direct dollars typically spent on large advertising campaigns, executive benefits and costly office complexes into our product. We assure our customers that every dollar they spend is invested directly into their Sprinter. We also ensure quality by drawing our workforce from a community which still values exceptional craftsmanship.

The Sprinter trademark is associated with excellence, luxury and superior customer satisfaction. Welcome to the Sprinter family where quality, comfort and function meet



Sprinter



Copper Canyon



Four adults dine comfortably in our stylish 45" wide dinettes. The increased height (6'3") in the slide-room in all fifth wheels provides additional comfort and ease of movement.

Sprinter's large entertainment center accommodates up to a 25" TV in most floorplans.

In the lap of luxury.

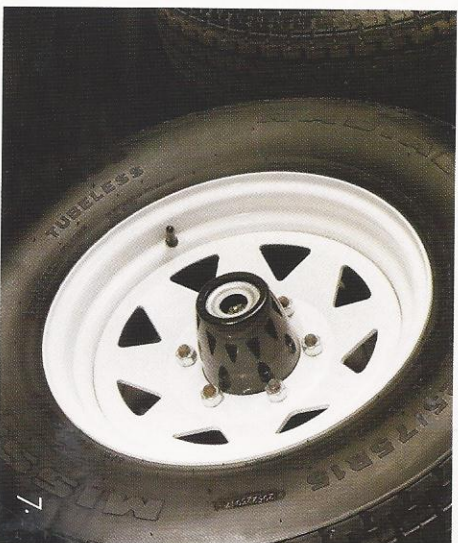
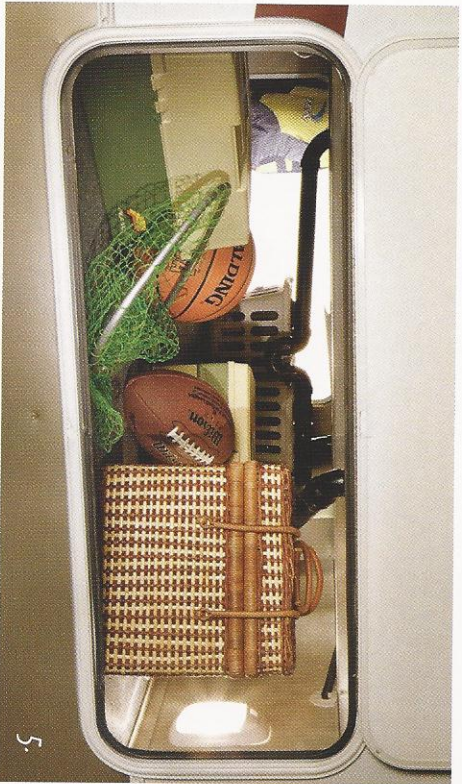
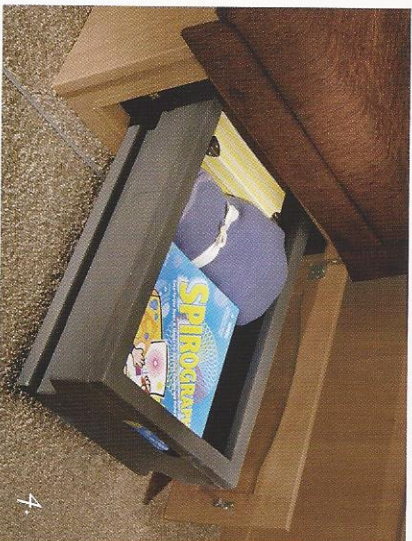
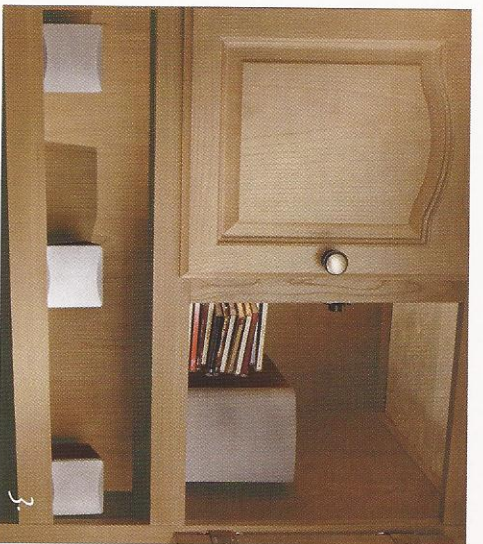
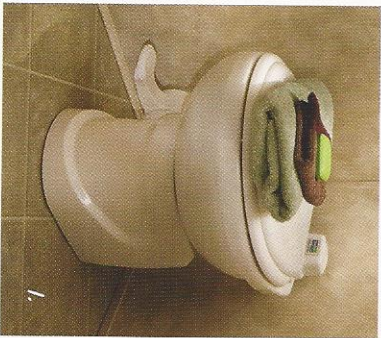
Sprinter offers a wealth of high quality features usually found in much higher priced travel trailers and fifth wheels. Luxurious standard features include rich Endura™ hardwood cabinets, home theater Surroundsound® systems (standard on Copper Canyon), a brilliantly conceived slide-out pantry and generous storage capacity. Our Copper Canyon fifth wheel now offers lots of additional headroom: 6'3" in slide-out and 6'5" in the master bedroom.

No detail has been overlooked. For instance:

- The toilet with foot flush is made of solid porcelain.
- Decorative lambrequins have the look and feel of an expensive home.
- A laundry chute even whisks away your clothes to a laundry basket in the basement storage.
- Sprinter's ample storage includes a unique "Store-More" pass-through storage door.
- EZ Lube™ axes simplify lubrication.
- The wooden coat rack near the entrance door gives everyone a place to hang their hat.

We've thought of everything so you don't have to.

1. Porcelain toilet
2. Slide-out pantry
3. Surroundsound®
4. EZ slide storage tray
5. Huge pass-through storage
6. Laundry chute
7. EZ Lube axes





Of the numerous amenities in a Sprinter kitchen, the pull-out pantry, deep 60/40 sinks, cathedral-raised solid-wood cabinets, 21" ovens and ample storage for cooking and entertaining needs are the ones consumers love most.

The choice is yours. And we make it easy.

Life may be full of difficult choices, but choosing a Sprinter will not be one of them. With 26 beautiful floor plans you have plenty of options to find the customized fit for you and your family. No matter which one you ultimately choose, be assured it was created for tasteful beauty, easy maintenance, maximum convenience and your utmost living enjoyment.

Proving you cannot have too much of a good thing, Sprinter offers two distinct versions from which to choose. Our time-honored Sprinter Series built with conventional wood frame, styled with an aluminum exterior, creates one of the finest values in the recreational vehicle market today. It is perfect for extended weekend exploration.

For those who like to distance themselves from home for longer periods at a time, the all-new Copper Canyon Series features upgraded residential amenities, unprecedented style and fully welded aluminum frames with fiberglass sidewalls.



Convenient cabinets and storage areas provide ample room for just about everything you'll ever need along the way.

Cabernet



Cypress



Sandstone



Standard features and construction highlights

EXTERIOR FEATURE HIGHLIGHTS

- Automotive style fender skirts
- Lockable, radius baggage doors
- Rear bumper storage
- Car bottle cover
- Easy opening triple entry step
- Extra wide 30" radius entry door
- E-Z Lubc™ axles
- Exterior grab handle for entry assist
- Tough guard painted skirt metal
- Patio light with switch
- Rain gutters and spouts
- Two 30 lb. LP bottles with auto change-over
- Patio awning
- "Store-More" pass-through storage compartment (TT)
- Roto-cast seamless holding tanks
- *Kystone Original™ space-maker 56 gallon fresh water system
- Upgraded graphics package (Copper Canyon)
- Fiberglass front cap (High-Profile Copper Canyon)
- Lighted storage compartments (FW)
- 36' 30-amp power cord

FRAME

- Heated and enclosed underbody
- Powder coated and cambered
- Individually designed maximum towability for each floor plan
- Extra cross members for additional support
- Fully welded outriggers for increased strength
- Continuous I-beam construction

FLOOR

- 2 x 3 floor joist on 12" maximum centers
- *Flex-Plex™ freeze-resistant plumbing lines
- Glued, screwed and nailed floor decking
- R-11 insulation in floor
- One piece seamless 5/8" floor decking (up to 24')

SIDEWALL

- R-7 insulation in sidewalls
- 2" x 2" studded walls on 6" maximum centers
- .024" gauge aluminum exterior skin
- Laminated aluminum framed side walls (Copper Canyon)

ROOF

- R-11 insulation in ceiling
- One piece, triple-sealed rubber roof
- Residential style roof rafters 5" in thickness
- 3/8" fully walkable roof

SLIDE ROOM

- Track system for bulb seals
- Water release track system
- Slide room override
- Electric/hydraulic powered slide rooms
- Flush floor slide room
- Heavy gauge 2 x 2 steel tube carrier slide room

INTERIOR FEATURE HIGHLIGHTS

- 13.5 ducted A/C with "Quick Cool"
- Water heater by-pass for easy winterization
- Residential cabinet hardware
- Large picture window at dinette
- Extra large entertainment center
- 63" interior slide room height (FW)
- 12 V slide room lights for dry camping
- Home theater Surroundsound® system with subwoofer (Copper Canyon)
- 30-amp distribution panel
- 12 V, 55-amp converter
- 30,000 BTU auto-ignition furnace with thermostat
- City water connection
- In-floor ducted heat
- Central monitoring system for all tanks/battery/LP
- Wood slide fascia

KITCHEN

- 6 gallon gas/electric DSI auto-ignition water heater
- Endura™ solid-wood raised cathedral cabinets
- Decorative wall paper border
- 3-burner range with high output and piezo easy light
- Knife holder behind stove
- Deep 60/40 residential sink
- Metal drawer glides
- Spice rack
- Pull-out pantry
- Countertop flip-up extension
- Metal high arched faucet
- Lighted range hood with exhaust fan
- Microwave with carousel
- 21" oven
- 45" wide dinette with radius pedestal table (most models)

- Reversible dinette seat cushions
- EZ Slide storage tray under dinette
- Decorative lighting above dinette
- Domestic double door refrigerator
- Overhead cabinets above sink

LIVING ROOM

- 80" interior living ceiling height
- Phone jack
- Cable TV hook up with antenna and booster
- Satellite prep
- High grade carpeting with pad
- Mastercraft furniture
- Residential fabric-covered valances with lambrequin legs
- Angie overhead storage in slide room
- Automotive detachable face CD player

BATHROOM

- Large vanity sink
- Porcelain foot flush toilet
- Residential medicine cabinet with mirror
- Shower curtain
- ABS one piece tub surround
- Skylight over tub
- Reinforced tub support
- Attic fan
- CFI receipts in bathroom

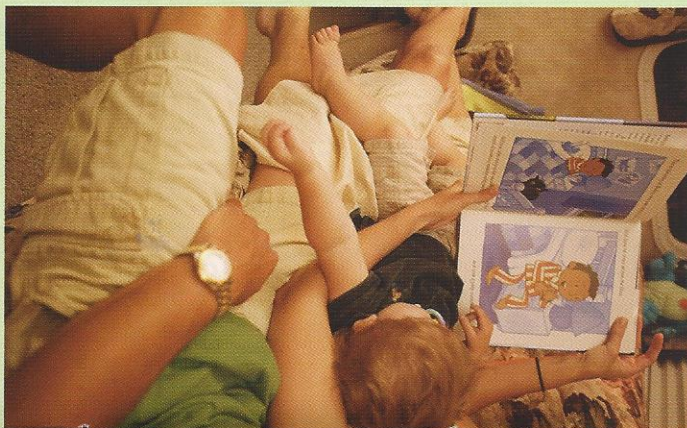
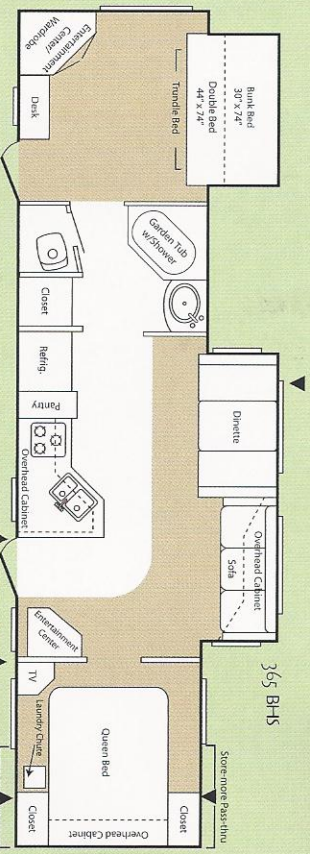
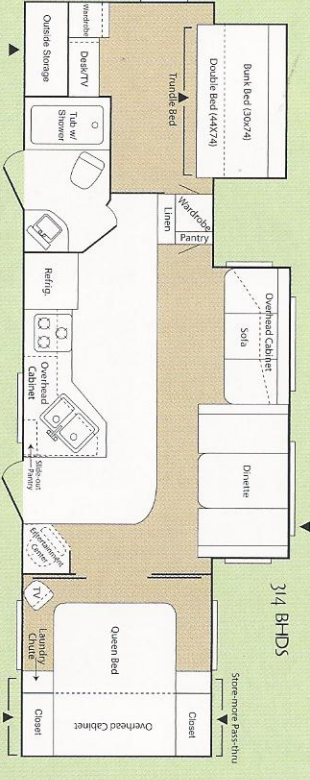
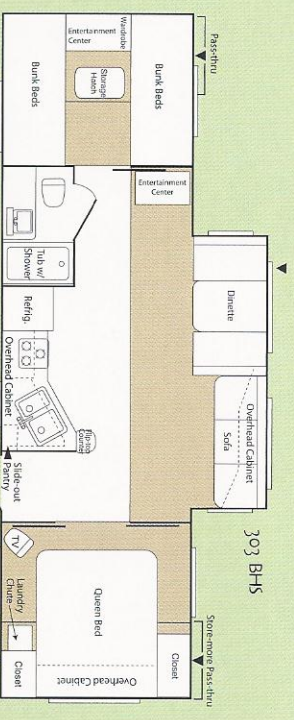
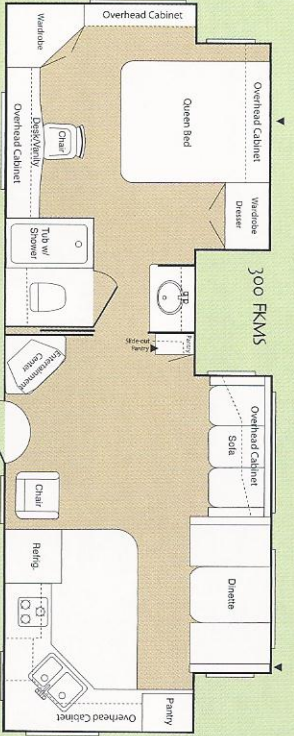
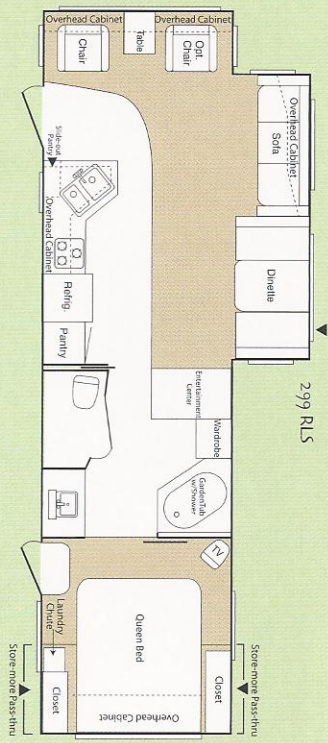
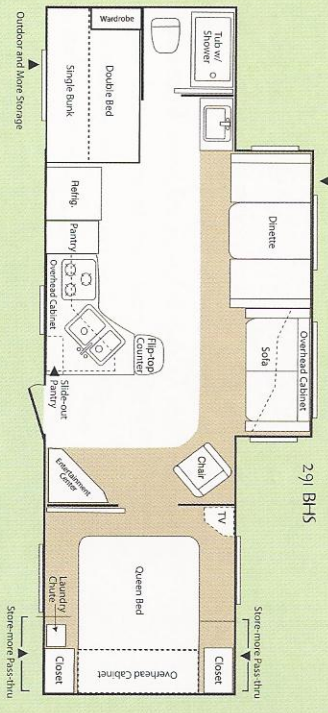
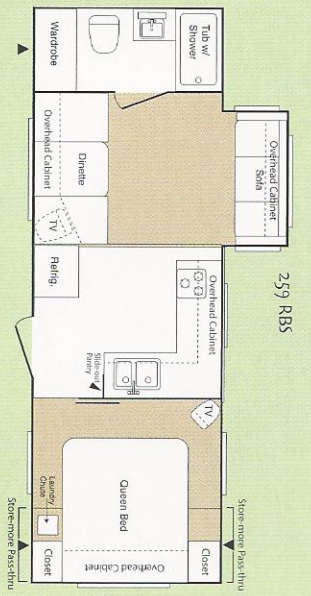
BEDROOM

- Residential carpeting with pad
- Full walk around queen bed
- Cable TV hook-up
- Under bed storage with gas strut
- Laundry chute (most models)
- Color matched bedspread
- Bedtime reading lights

SAFETY & CONVENIENCE PACKAGE

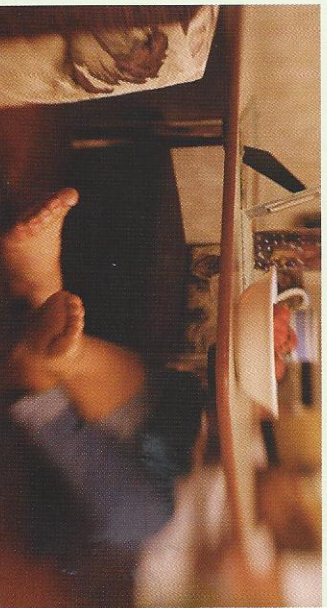
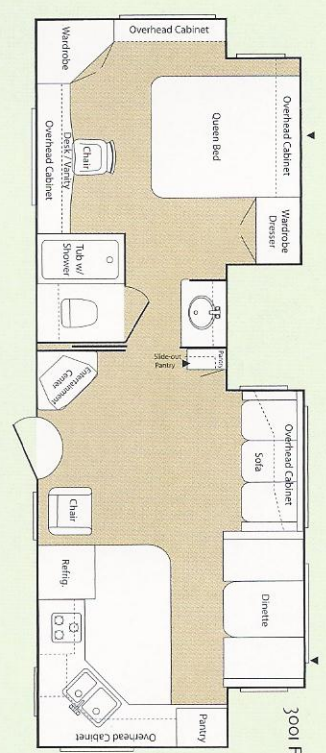
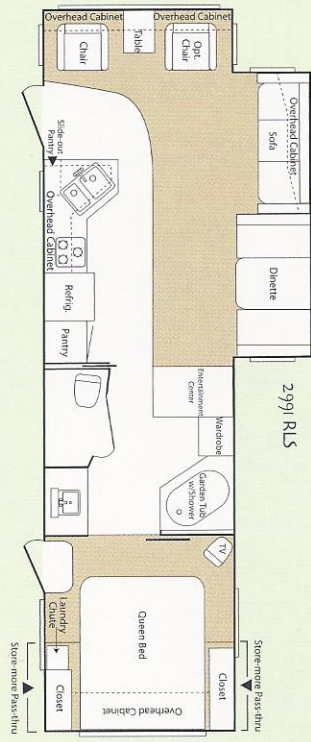
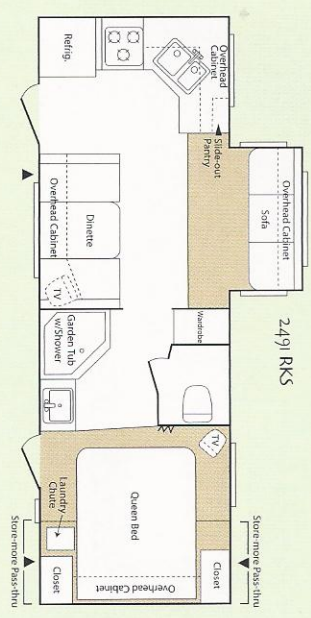
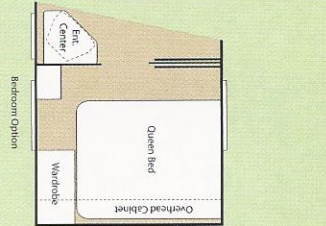
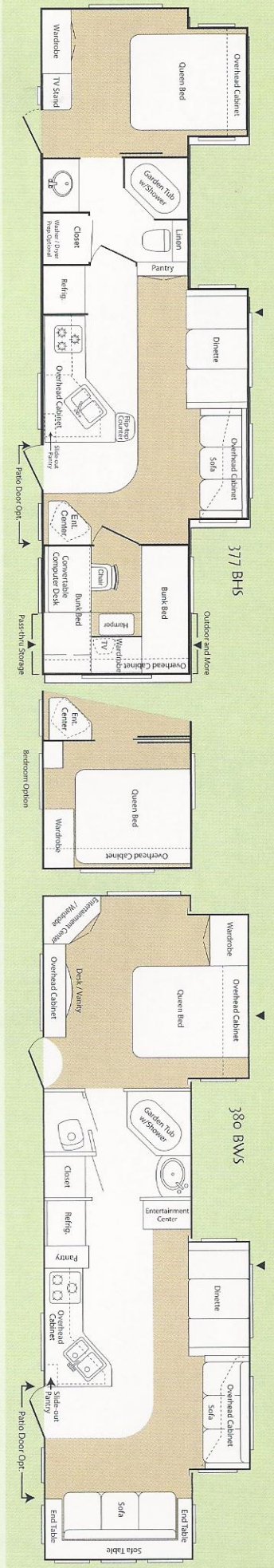
- Tinted safety glass windows
- Dual hitch safety chains
- Manual override for slide
- Fire extinguisher
- Smoke detector
- Carbon monoxide detector
- Egress windows
- LP gas leak detector
- Break away safety brake
- 4 wheel electric disc brakes
- Hitch light
- Door side and off door side clearance lights
- Scare light (FW)

Sprinter Travel Trailer

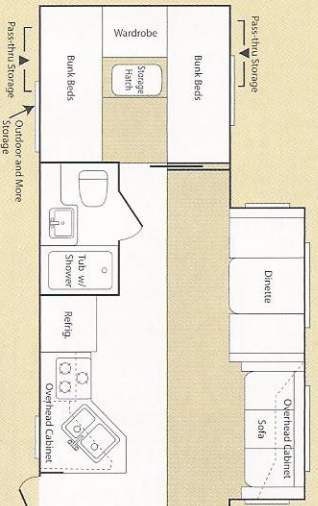
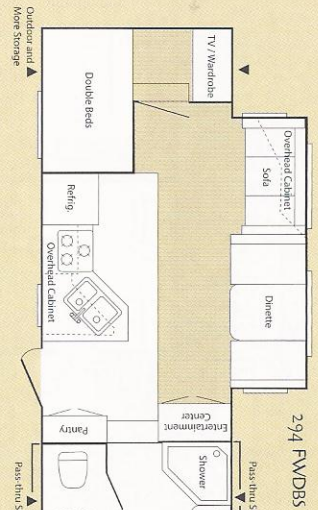
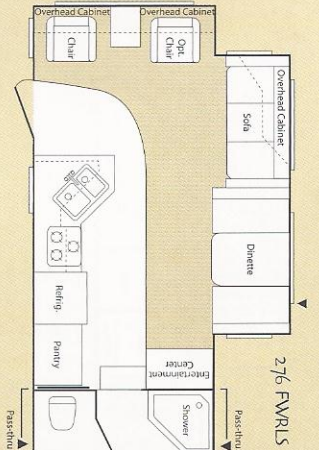
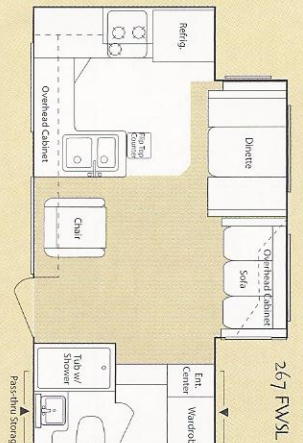
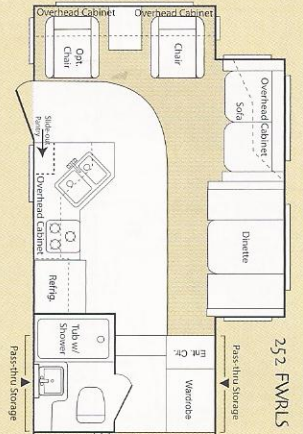


▲ Outside Storage

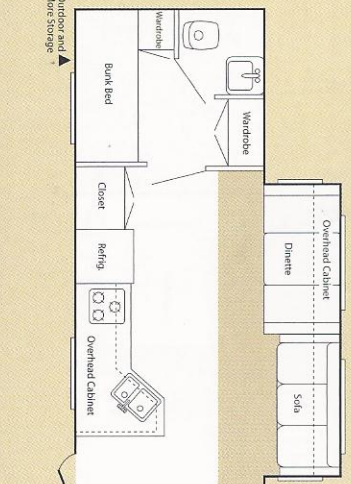
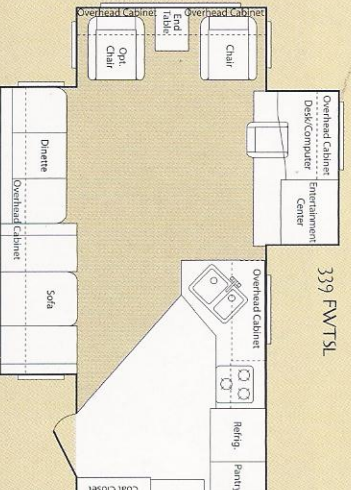
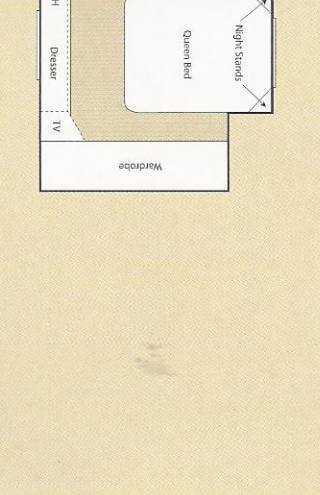
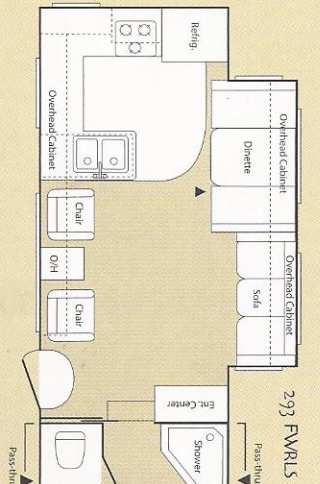
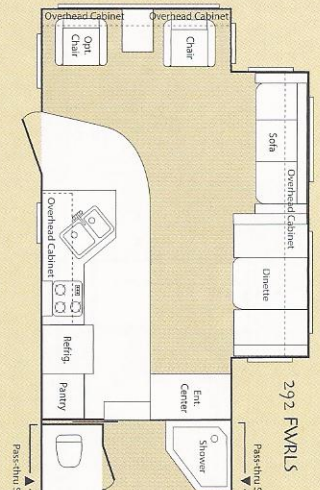
Copper Canyon Travel Trailer



Copper Canyon Mid-Profile Fifth Wheel



Copper Canyon High-Profile Fifth Wheel



Rugged, robust, reliable.

Anyone interested in a Sprinter should take the ultimate inspection tour. Go underneath a Sprinter, look on top, go inside every nook and cranny. You will see for yourself just how well constructed Sprinter travel trailers really are. We use the best construction methods and highest quality components in the industry. We adhere to strict manufacturing standards and employ the finest craftsmen.

Your journey begins with one small step.

Now that you've seen everything a Sprinter represents, it's time to visit your local Sprinter dealer. So get going. Go your own way. Your new 2006 Sprinter is ready to take you there.

The 2006 Sprinter and Copper Canyon Sprinter are manufactured by Keystone RV Company, the nation's largest manufacturer of quality travel trailers and fifth wheels.



An oversized shower with skylight, large vanity sink, tub surround and solid-wood medicine cabinet add luxury and convenience to our comfortable bathroom.

Sprinter Travel Trailer Specifications

ITEM	249 RKS	259 RBS	274 RLS	291 BHS	299 RLS	300 FKMS	303 BHS	314 BHDS	365 BHS	377 BHS	380 BWS
Gross dry weight	5,860	5,650	6,410	TBA	6,780	7,870	6,830	7,995	8,205	8,560	8,170
Carrying capacity	1,695	1,990	2,990	TBA	2,900	3,370	2,790	2,885	2,935	2,660	3,230
Hitch	375	640	600	TBA	740	1,080	820	700	980	1,060	1,240
Exterior length	26'6"	27'6"	29'1"	TBA	32'11"	32'11"	32'3"	34'11"	38'1"	38'7"	38'7"
Exterior width	8'	8'	8'	TBA	8'	8'	8'	8'	8'	8'	8'
Exterior height (top of AC)	10'10"	10'10"	10'10"	TBA	10'10"	11'1"	10'10"	11'1"	10'10"	10'10"	10'10"
Fresh water capacity (gals.)	56	56	56	TBA	56	56	56	56	56	56	56
Waste water capacity (gals.)	42	32	42	TBA	32	42	42	42	42	42	42
Gray water capacity (gals.)	74	74	42	TBA	74	74	42	84	84	84	84
LPG capacity (lbs.)	60	60	60	TBA	60	60	60	60	60	60	60
Tire size	205/75R15C	205/75R15C	225/75R15D	TBA	225/75R15D	225/75R15D	225/75R15D	225/75R15D	225/75R15D	225/75R15D	225/75R15D
Rim size	15 x 5	15 x 5	15 x 6	TBA	15 x 6	15 x 6	15 x 6	15 x 6	15 x 6	15 x 6	15 x 6

Copper Canyon Travel Trailer Specifications

ITEM	2491 RKS	2591 RBS	2991 RLS	3001 FKMS	3121 SLS	3141 BHDS
Gross dry weight	5,860	5,650	6,780	7,870	TBA	7,995
Carrying capacity	1,695	1,990	2,900	3,370	TBA	2,885
Hitch	375	640	740	1,080	TBA	700
Exterior length	26'6"	27'6"	32'11"	32'11"	TBA	34'11"
Exterior width	8'	8'	8'	8'	TBA	8'
Exterior height (top of AC)	10'10"	10'10"	10'10"	11'1"	TBA	11'1"
Fresh water capacity (gals.)	56	56	56	56	TBA	56
Waste water capacity (gals.)	42	32	32	42	TBA	42
Gray water capacity (gals.)	74	74	74	74	TBA	84
LPG capacity (lbs.)	60	60	60	60	TBA	60
Tire size	205/75R15C	205/75R15C	225/75R15D	225/75R15D	225/75R15D	225/75R15D
Rim size	15 x 5	15 x 5	15 x 6	15 x 6	TBA	15 x 6

Copper Canyon Mid-Profile Fifth Wheel Specifications

ITEM	282 FWRLS	267 FWSLS	276 FWRLS	294 FWDBS	297 FWBRBS
Gross dry weight	6,930	7,100	7,200	7,710	7,740
Carrying capacity	1,270	2,900	2,900	3,810	3,760
Hitch	1,200	1,200	1,300	1,360	1,340
Exterior length	26'5"	27'9"	29'7"	31'8"	31'6"
Exterior width	8'	8'	8'	8'	8'
Exterior height (top of AC)	11'10"	11'10"	11'10"	11'10"	11'10"
Fresh water capacity (gals.)	56	56	56	56	56
Waste water capacity (gals.)	42	42	42	42	42
Gray water capacity (gals.)	42	74	74	74	42
LPG capacity (lbs.)	60	60	60	60	60
Tire size	205/75R15C	225/75R15D	225/75R15D	225/75R15D	225/75R15D
Rim size	15 x 5	15 x 6	15 x 6	15 x 6	15 x 6

Copper Canyon High-Profile Fifth Wheel Specifications

ITEM	292 FWRLS	293 FWSLS	339 FWTLS	350 FWBHS
Gross dry weight	9,100	9,520	10,100	9,460
Carrying capacity	2,800	2,840	4,095	3,080
Hitch	1,740	2,200	2,195	2,380
Exterior length	31'11"	32'0"	36'10"	35'9"
Exterior width	8'	8'	8'	8'
Exterior height (top of AC)	11'10"	11'10"	11'10"	11'10"
Fresh water capacity (gals.)	56	56	56	56
Waste water capacity (gals.)	42	42	42	42
Gray water capacity (gals.)	74	74	84	84
LPG capacity (lbs.)	60	60	60	60
Tire size	225/75R15D	225/75R15D	235/85R16E	225/75R15D
Rim size	15 x 6	15 x 6	16 x 6	15 x 6

SPRINTER COPPER CANYON

Keystone RV Company
 2642 Hackberry Drive • P.O. Box 2000 • Goshen, IN 46526-2000
 574/535-2100 • www.keystoneRV.com

Product information is as accurate as possible at the time of printing.
 Features, prices and specifications are subject to change without notice.
 Colors and finishes are photographic representations and may appear differently
 when viewing actual materials. Some features shown are optional.

Your Sprinter / Copper Canyon dealer is:

Jerry's Trailers & Campers, Inc.
 2601 South 13th St.
 Norfolk, NE 68701
 (402) 371-1306
customers@jerrystrailers.com
 www.jerrys.com

