

Sportsmen[®]

by K-Z

Travel Trailers and Fifth Wheels



Built for People who
Love the Outdoors...
By People who
Love the Outdoors.



Any avid sports enthusiast will enjoy the great outdoors even more when this spacious interior awaits at the end of an active day.

Surrounded by the warm woodtones of raised oak mortise and tenon overhead cabinet doors, this space-expanding kitchen is well designed with storage within easy reach. Across from the kitchen is the dinette and sofa seating area and just adjacent is the entertainment center DVD/surround sound and TV cabinet. The optional hide-a-bed sofa is always a popular "must have" item. Overhead cabinets with fluted glass panel doors provide additional storage with a decorative touch.



Décors

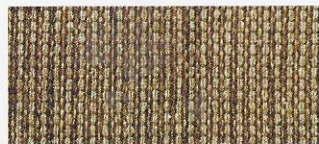
Mahogany



Raisin



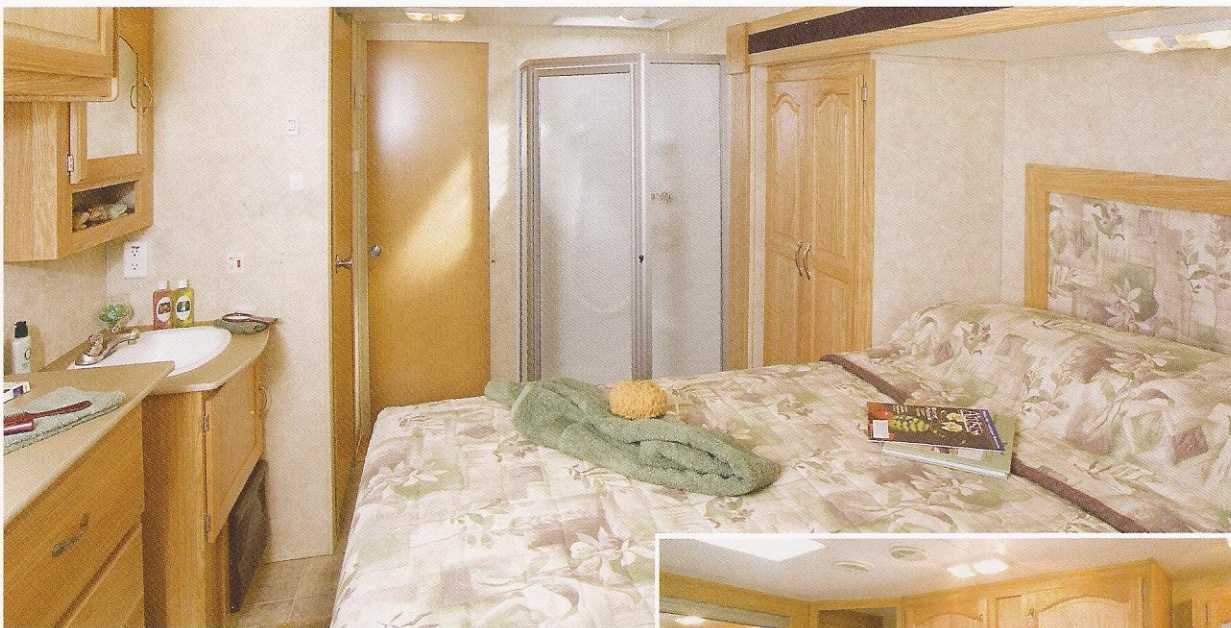
Slate





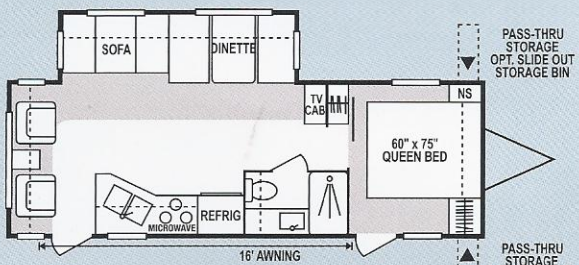
Relax, have a seat... sit a spell.

The rear of this living room sports optional dual recliners, a gracious wide view window featuring décor coordinated decorative valances and light filtering shades.

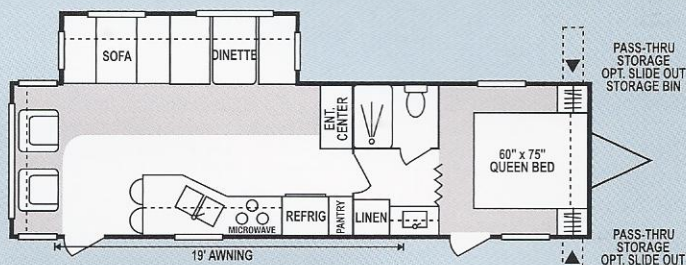


When it's time to refresh yourself with a hot shower and settle in for a good nights rest, you'll discover a bed and bath that is totally accommodating. A TV shelf, vanity with medicine cabinet, multiple deep drawer storage, overhead cabinets and plenty of wardrobe space are included in this bedroom. And, with huge under-bed storage capacity there's room for all your extras.

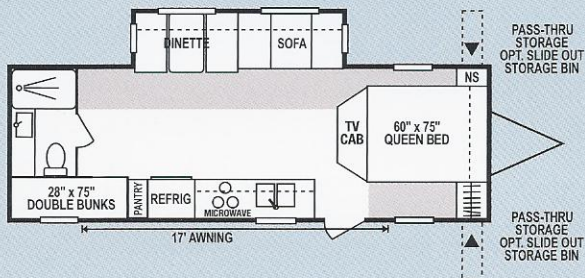




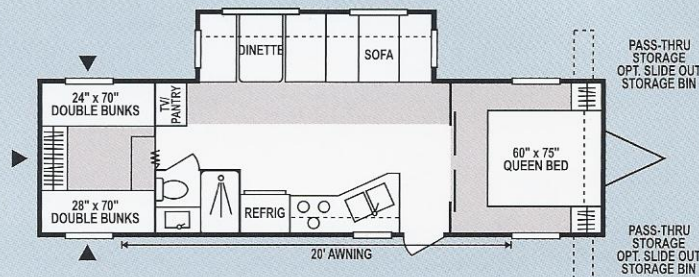
2604P • UVW 5690 • Dry Hitch Wt. 780 • NCC 4040 • Length 28'9"



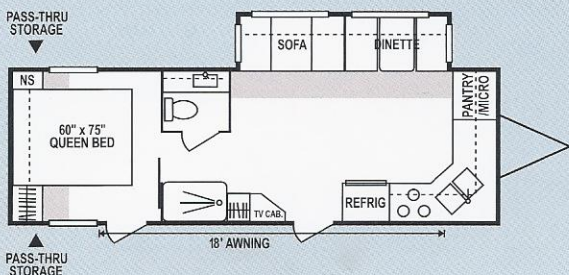
3103P • UVW 6850 • Dry Hitch Wt. 860 • NCC 3150 • Length 32'4"



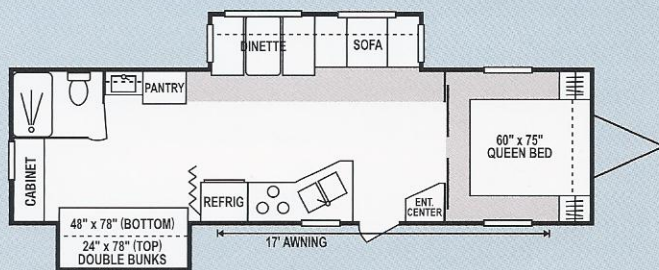
2807P • UVW N/A • Dry Hitch Wt. N/A • NCC N/A • Length N/A



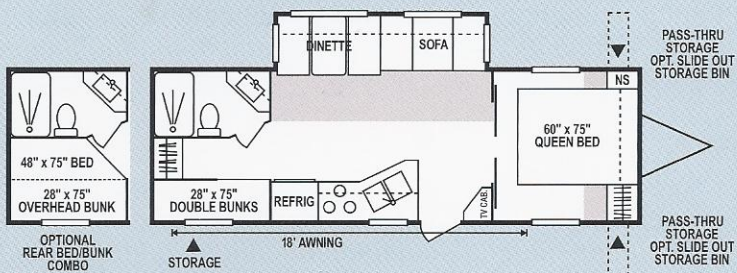
3204PSS • UVW 6880 • Dry Hitch Wt. 660 • NCC 3120 • Length 32'7"



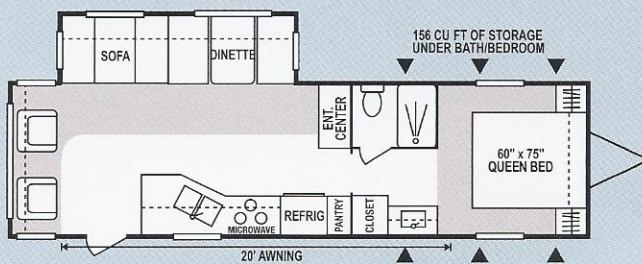
2902P • UVW 6080 • Dry Hitch Wt. 1320 • NCC 3920 • Length 30'



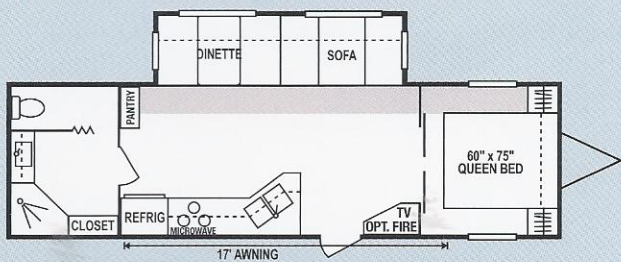
3205PX2 • UVW 7140 • Dry Hitch Wt. 940 • NCC 2860 • Length 34'3"



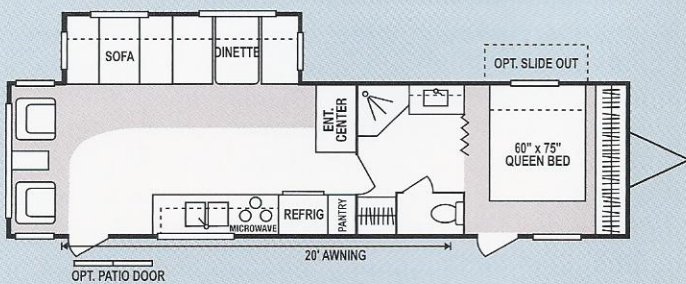
2903P • UVW 6080 • Dry Hitch Wt. 580 • NCC 3920 • Length 29'11"



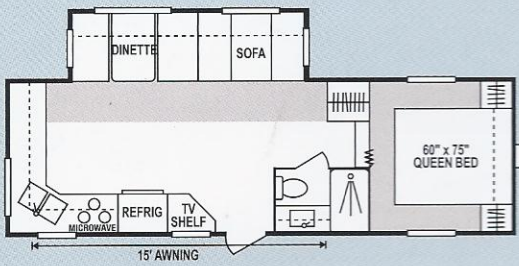
3206P • UVW 7520 • Dry Hitch Wt. 940 • NCC 2480 • Length 33'4"



3008P • UVW 6440 • Dry Hitch Wt. 1120 • NCC 3560 • Length N/A

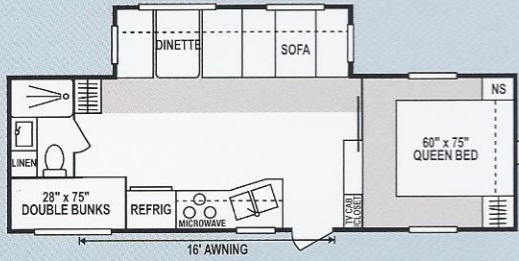


3513P • UVW 7500 • Dry Hitch Wt. 540 • NCC 2500 • Length 35'6"



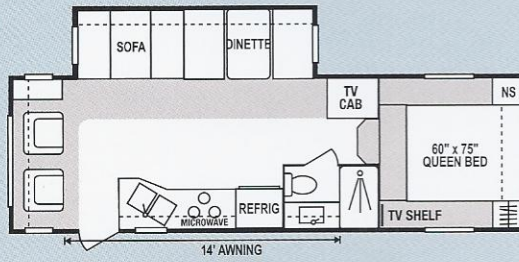
2452P • UVW 6500 • Dry Hitch Wt. 1380 • NCC 3500 • Length 26'5"

Medium profile



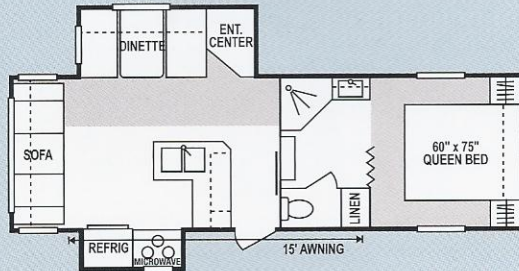
2454P • UVW 6460 • Dry Hitch Wt. 1260 • NCC 3540 • Length 26'6"

Medium profile



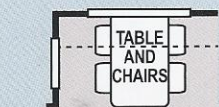
2456P • UVW 6290 • Dry Hitch Wt. 1180 • NCC 3710 • Length 26'6"

Medium profile



2457PX2P • UVW 7920 • Dry Hitch Wt. 1380 • NCC 2730 • Length 26'8"

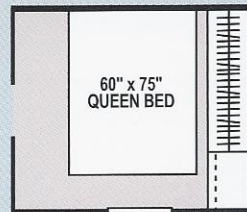
Medium profile



Option 4

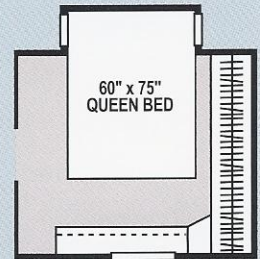


Option 5



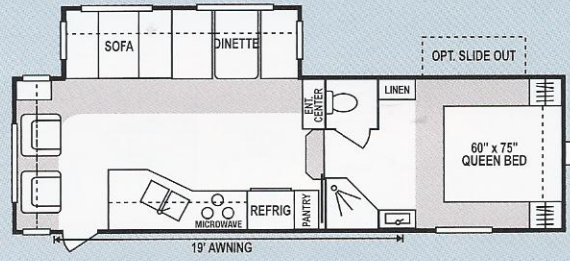
Option 6

(available on 2856P, 2954P and 3052P)



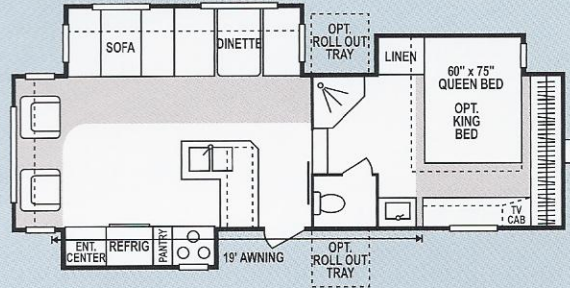
Option 7

Bedroom Slide Out
(Fifth Wheel)



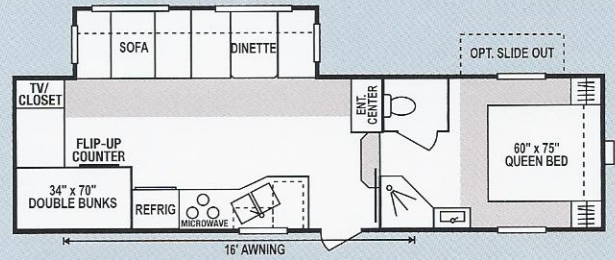
2856P • UVW 7020 • Dry Hitch Wt. 1300 • NCC 2980 • Length 30'1"

Medium profile



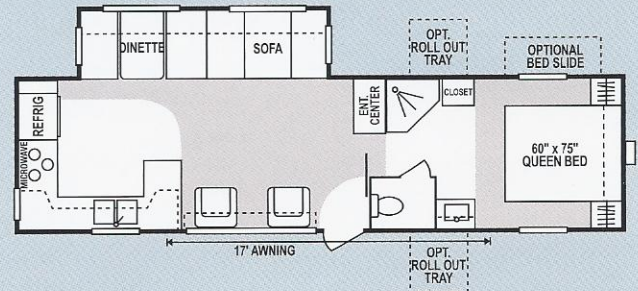
2857PX3 • UVW 8240 • Dry Hitch Wt. 1900 • NCC 1760 • Length 30'1"

Stand up profile



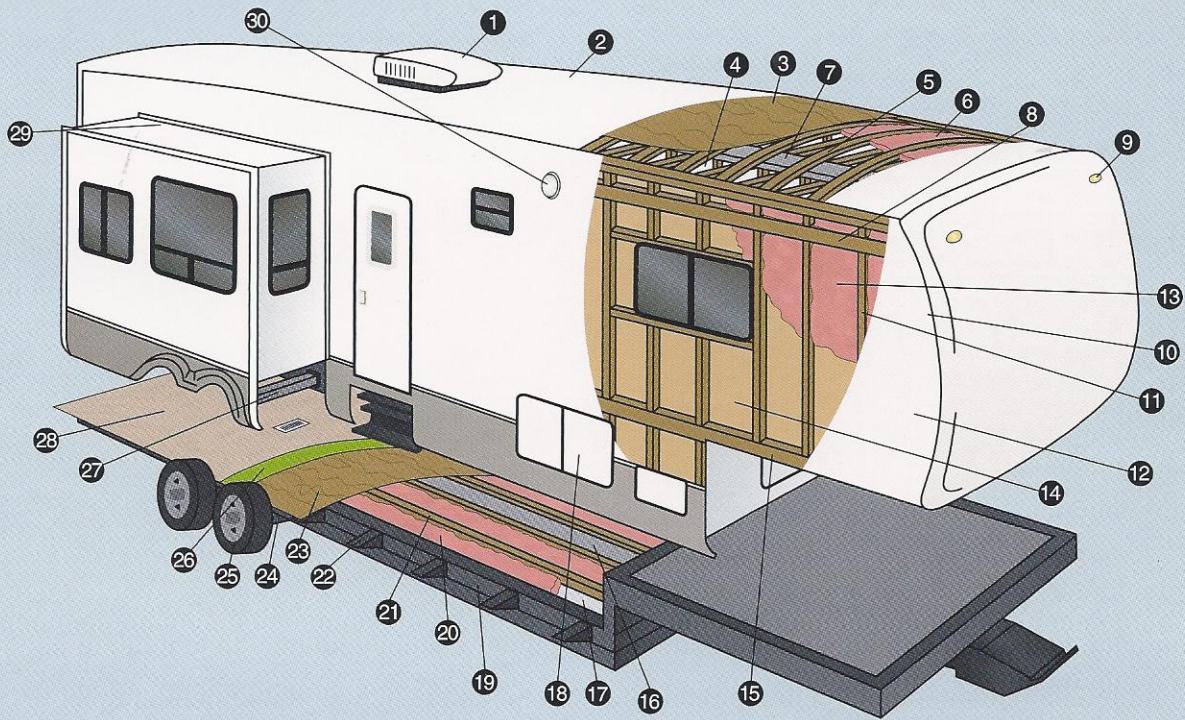
2954P • UVW 6340 • Dry Hitch Wt. 1100 • NCC 3660 • Length N/A

Stand up profile



3052P • UVW 7510 • Dry Hitch Wt. 1700 • NCC 3490 • Length 31'7"

Stand up profile

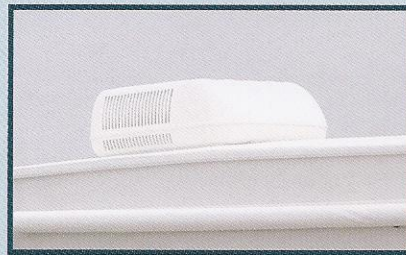


- | | | |
|---|---|--|
| <ul style="list-style-type: none"> 1 13,500 BTU A/C 2 One-Piece Seamless Rubber Roof 3 3/8" Decking 4 Vinyl Interior Ceiling Panel 5 4 1/2" Wood Truss Rafters, 16" O.C. 6 R-7 Batten Insulation 7 Insulated Ductwork 8 1 1/2" x 5" Heavy Duty Laminated Wood Headers 9 Exterior Clearance and Brake Lights 10 2x2 Wood Frame Front and End Walls | <ul style="list-style-type: none"> 11 2x2 Wood Studs, 16" O.C. 12 Metal Siding (standard) 13 R-7 Batten Insulation 14 Decorative Luan Wall Board 15 Single 8" Wood Stringer 16 Residential Style Ducted Heat Run in Floor 17 Darco® Moisture Barrier 18 Large Capacity Pass-Thru Exterior Storage with Radius Doors Front and Side for Easy Access 19 Heavy Duty I-beam Frame Construction 20 R-7 Batten Insulation | <ul style="list-style-type: none"> 21 2x3 Wooden Floor Joists, 16" O.C. 22 Fully Welded Out Riggers 23 5/8" Tongue and Groove Plywood 24 Heavy Duty Leaf Spring Axles 25 Heavy Duty Steel Wheels with Trim Rings and Center Caps 26 Residential Style Carpet Pad 27 Rack and Pinion Electric Slide with Manual Override with 2x3 Box Tube Slide Out Ram 28 28 oz. Residential Carpet or Linoleum 29 Triple Sealed Slide Outs 30 Exterior Security/Scare Lights |
|---|---|--|

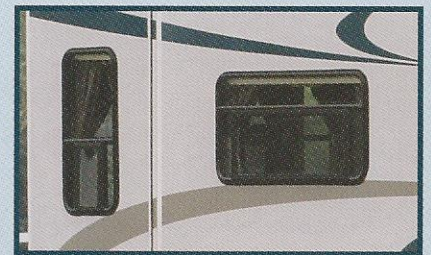
Sportsmen® Exterior Features



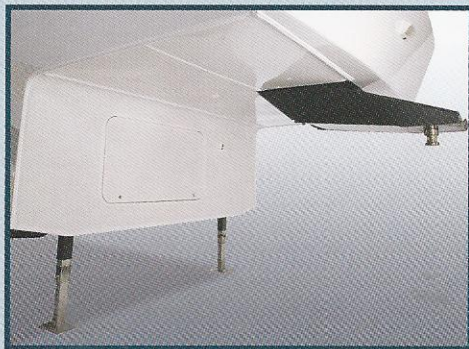
Fiberglass Exterior Siding or Aluminum Siding



13,500 BTU A/C (standard)
15,000 BTU A/C (optional)



Tinted/Safety Windows (optional)



Enclosed Pinbox and Pinbox Extension (optional)



Exterior Shower (standard)



Assist Grab Handle (optional)



Exterior Security Light (optional)

Travel Trailers

	2604P	2807P	2902P	2903P	3008P	3103P	3204PSS	3205PX2	3206P	3513P
UVW (Unloaded Vehicle Wt.)	5960	N/A	6640	6080	6440	6850	6880	7140	7520	7500
Dry Hitch Wt.	780	N/A	1320	580	1120	860	660	940	940	540
Dry Axle Wt.	5180	N/A	5320	5500	5320	5990	6220	6200	6580	6960
NCC (Net Carrier Capacity)	4040	N/A	3920	3920	3560	3150	3120	2860	2480	2500
GVWR	10000	N/A	10000	10000	10000	10000	10000	10000	10000	10000
Exterior Height (w/ A/C)	129"	129"	129"	129"	129"	129"	129"	129"	138"	129"
Exterior Length	28'9"	N/A	30'	29'11"	N/A	32'4"	32'7"	34'3"	33'4"	35'6"
Exterior Width	96"	96"	96"	96"	96"	96"	96"	96"	96"	96"
Refrigerator (cu.)	6	6	6	6	6	6	6	6	6	6
Water Heater Cap. (gal.)	6 G/E*	6 G/E*	6 G/E*	6 G/E*	6 G/E*	6 G/E*	6 G/E*	6 G/E*	6 G/E*	6 G/E*
Fresh Water Cap. (gal.)	40	40	40	40	40	40	40	40	40	40
Waste Water Cap. (gal.)	32	32	32	32	32	32	32	32	32	32
Gray Water Cap. (gal.)	32	332	32	32	32	32	32	32	32	32
LP Gas Cap. (lbs.)	60	60	60	60	60	60	60	60	60	60
Furnace BTUs (1000's)	25	25	25	25	25	30	30	30	30	30
Tire Size	15"	15"	15"	15"	15"	15"	15"	15"	15"	15"

* DSI Water Heater

Fifth Wheels

	2452P	2454P	2456P	2457PX2	2856P	2857PX3	2954P	3052P
UVW (Unloaded Vehicle Wt.)	6500	6460	6290	7220	7020	8240	6340	7510
Dry Hitch Wt.	1380	1260	1180	1380	1300	1900	1100	1700
Dry Axle Wt.	5420	5200	5110	5840	5720	6340	5240	5810
NCC (Net Carrier Capacity)	3500	3540	3710	2730	2980	1760	3660	3490
GVWR	10000	10000	10000	10000	10000	10000	10000	11000
Exterior Height (w/ A/C)	136"	136"	136"	136"	142"	142"	142"	142"
Exterior Length	26'5"	26'6"	26'6"	26'8"	30'1"	30'1"	N/A	31'7"
Exterior Width	96"	96"	96"	96"	96"	96"	96"	96"
Refrigerator (cu.)	6	6	6	6	6	6	6	6
Water Heater Cap. (gal.)	6 G/E*	6 G/E*	6 G/E*	6 G/E*	6 G/E*	6 G/E*	6 G/E*	6 G/E*
Fresh Water Cap. (gal.)	55	55	55	55	55	55	55	55
Waste Water Cap. (gal.)	32	32	32	32	32	32	32	32
Gray Water Cap. (gal.)	32	32	32	50	50	50	50	50
LP Gas Cap. (lbs.)	60	60	60	60	60	60	60	60
Furnace BTUs (1000's)	25	25	25	25	25	25	25	25
Tire Size	15"	15"	15"	15"	15"	15"	15"	15"

* DSI Water Heater

Standard Package – Mandatory Living Package:

- DVD w/Surround Sound *
- Heated and Enclosed Underbelly *
- Diamond Plate on Front End of Travel Trailers
- 13,500 BTU A/C
- Awning
- Microwave
- Pillows for Sofa
- Oven
- 6 Cu.' Refrigerator
- TV Shelf in Bedroom
- TV Antenna w/Booster
- Cable Hookup
- Tub Surround
- Night Shades
- Fluted Glass Doors in Slideouts
- Acrylic White Sink w/ High-Rise Faucet
- Raised Oak Mortise and Tenon Overhead Cabinet Doors
- Deluxe Roller Drawer Guides
- Deluxe Globe Dinette Light
- Fluorescent Light over Kitchen Sink w/Night Light
- Sink Cover
- Sky Light over Tub
- Porch Light on ODS
- Hitch Light
- Smoke Detector
- LP Detector
- CO Detector
- Chrome Rings and Caps
- Slideout Gas Bottle Trays
- Adjustable Jake Plate
- 40 Gal. Fresh Water Tank
- Exterior Shower
- 6 Gal. Gas/Electric DSI Water Heater

Optional Designer Package:

- Sink Covers
- Stove Cover
- Bathroom Accessories
- Shower Door
- Posterest Mattress
- Foot-Flush Toilet
- Assist Grab Handle
- Enclosed Pin Box (Fifth Wheel)
- Stabilizer Jacks

Optional Designer Plus Package:

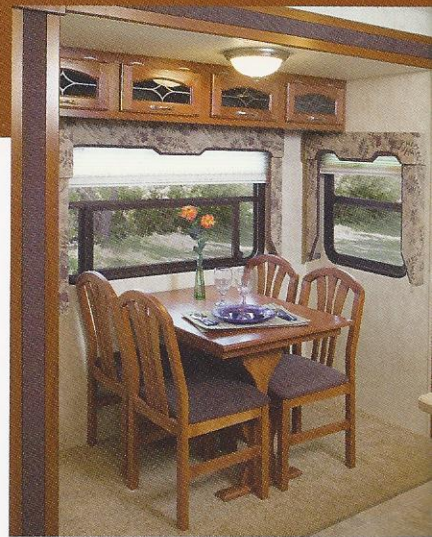
- 8 Cu.' Refrigerator w/Raised Oak Panel
- R14 Roof Insulation
- 40" Trunk Door in PSO *
- Fantastic Fan
- Slider Windows in PSO *
- Security Light on DS
- Black Tank Flush System
- Chrome Bumper Cover

Additional Options Available:

- Fiberglass Exterior
- 15000 BTU A/C
- Hide-a-Bed *
- Ladder
- Power Jacks
- Pull Out Pantry *
- Recliner *
- Outside Grill
- Shocks
- Spare Tire
- Spare Tire Carrier
- Spare Tire Cover
- Table and Four Chairs
- Tinted Windows
- CSA (Canada Only)

* where applicable

Sportsmen[®] LX by K-Z



Décor coordinated window trim, leaded glass in the overhead cabinet doors, these details and so much more are found throughout.

The deep cherry woodtones really set the stage for an enjoyable stay in this well appointed model. Equip it your way to take custom comforts on the road.

	3254PX3	3354PX3	3551PX4	3553PX4
UVW (Unloaded Vehicle Wt.)	N/A	10670	10880	10880
Dry Hitch Wt.	N/A	1880	1940	1940
Dry Axle Wt.	N/A	8790	8940	8940
NCC (Net Carrier Capacity)	N/A	13800	13800	13800
GVWR	N/A	13800	13800	13800
Interior Height	82"	82"	82"	82"
Exterior Height (w/ A/C)	142"	142"	142"	142"
Exterior Length	N/A	N/A	35'6"	35'6"
Exterior Width	96"	96"	96"	96"
Refrigerator (cu.')	8	8	8	8
Water Heater Cap. (gal.)	10 G/E	10 G/E	10 G/E	10 G/E
Fresh Water Cap. (gal.)	55	55	55	55
Waste Water Cap. (gal.)	50	50	50	50
Gray Water Cap. (gal.)	50	50	50	50
LP Gas Cap. (lbs.)	60	60	60	60
Furnace BTUs (1000's)	30	30	30	30
Tire Size	16"	16"	16"	16"

* DSI Water Heater



This rear kitchen has plenty of counter work space and a dual deep basin sink. Counter space and storage is even greater with the optional island.



A full shower, large wardrobe, beautiful cabinetry and a queen size bed await you.



Décors

Amber

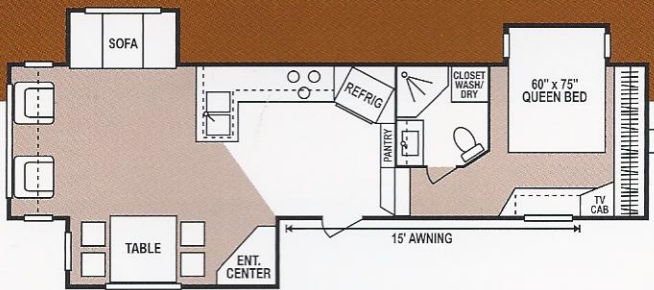


Foliage

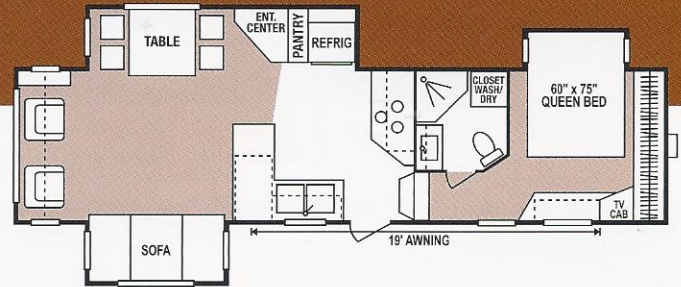


Mahogany

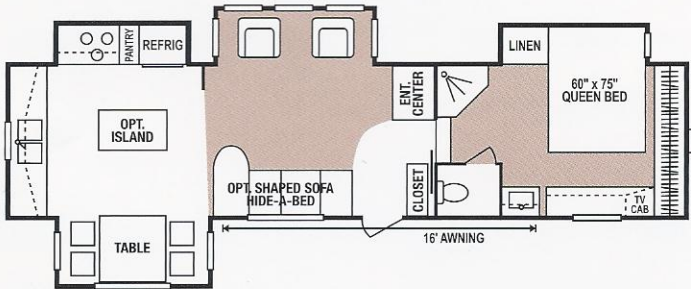




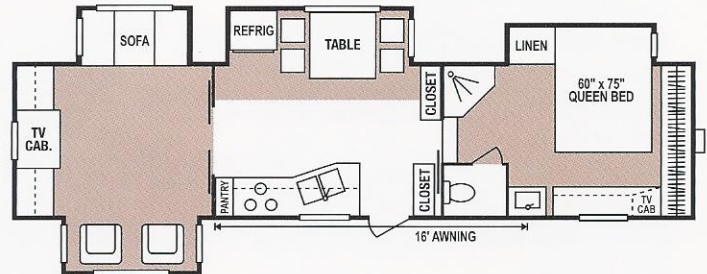
3254PX3 • UVW N/A • Dry Hitch Wt. N/A • NCC N/A • Length N/A



3354PX3 • UVW 10670 • Dry Hitch Wt. 1880 • NCC 13800 • Length N/A



3551PX4 • UVW 10880 • Dry Hitch Wt. 1940 • NCC 13800 • Length 35'6"



3553PX4 • UVW 10880 • Dry Hitch Wt. 1940 • NCC 13800 • Length 35'6"

Designer Package: (forced option)

- Sink Covers
- Stove Cover
- Bathroom Accessories
- Postrest Mattress
- Foot-Flush Toilet
- Assist Grab Handle
- Stabilizer Jacks
- Enclosed Pin Box

Designer Plus Package: (forced option)

- 8 Cu.' Refrigerator w/Raised Oak Panel
- R14 Roof Insulation
- Black Tank Flush System
- Fantastic Fan
- Slider Windows in PSO
- Security Light on DS

LX Package: (forced option)

- Fiberglass Exterior
- 15000 A/C
- Hide-a-Bed
- Ladder
- Power Jacks
- Shocks
- TV
- 50 Amp Service
- Table and 4 Chairs
- Tinted Windows
- Wire for Satellite
- Wire for A/C in Bedroom

Mandatory Living Package: (forced option)

- AM-FM CD Player w/Surround Sound
- A/C
- Awning
- Microwave
- Pillow for Sofa
- Oven
- Refrigerator
- TV Shelf in Bedroom
- TV Antenna w/Booster
- Cable Hookup
- Tub Surround
- Night Shades
- Fluted Glass Doors in Slideouts
- Acrylic Sink w/High-Rise Faucet
- Deluxe Roller Drawer Guides
- Raised Oak Mortise and Tenon Overhead Cabinet Doors
- Two Lights by Sofa
- Deluxe Globe Dinette Light
- Fluorescent Light over Kitchen Sink w/Night Light over Sink
- Sink Cover
- Brushed Nickel Faucets and Cabinet Hardware
- Skylight Over Shower
- Porch Light on ODS
- Hitch Light
- Smoke Detector
- LP Detector
- Chrome Rings and Caps
- Exterior Shower

Additional Options Available:

- Aluminum Wheels
- Outside Grill
- Cherry Wood
- Central Vac
- Fireplace
- Plumbing for Washer/Dryer
- Recliner
- Gel Coat Fiberglass
- Spare Tire
- Spare Tire Carrier
- Spare Tire Cover
- CSA

Raisin



Sienna



Slate



	3705PX2	3803P	3803PX2	4013PX2	4014PX2	4014PX3
UVW (Unloaded Vehicle Wt.)	7840	7780	8724	9640	8820	9220
Dry Hitch Wt.	1320	1100	1100	920	980	1120
Dry Axle Wt.	6520	6680	7230	8720	7840	8100
NCC (Net Carrier Capacity)	2160	2220	1670	1280	1880	1780
GVWR	10000	10000	10000	10920	10700	11000
Interior Height	82"	82"	82"	84"	84"	84"
Exterior Height (w/ A/C)	129"	129"	129"	129"	129"	129"
Exterior Length	37'8"	38'8"	38'8"	40'8"	40'8"	40'8"
Exterior Width	96"	96"	96"	96"	96"	96"
Refrigerator (cu.')	6	6	6	10	10	10
Water Heater Cap. (gal.)	6 G/E*	6 G/E*	6 G/E*	6 G/E*	6 G/E*	6 G/E*
Fresh Water Cap. (gal.)	N/A	40	40	N/A	N/A	N/A
Waste Water Cap. (gal.)	32	32	32	32	32	32
Gray Water Cap. (gal.)	32	32	32	32	32	32
LP Gas Cap. (lbs.)	60	60	60	60	60	60
Furnace BTUs (1000's)	35	35	35	35	35	35
Tire Size	15"	15"	15"	15"	15"	15"

* DSI Water Heater

* Limited Models (all fiberglass) adds approximately 10% to total weight.

* Additional Slide Out Rooms each add approximately 500 lbs. to total weight.

Features:

Mandatory Living Package:

- Am-Fm CD Player w/ Four Speakers
- 13,500 BTU A/C Ducted
- Awning
- Microwave
- Pillows for Sofa
- Oven
- 6 Cu.' Refrigerator
- TV Shelf in Bedroom
- TV Antenna w/Booster
- Cable Hookup
- Tub Surround
- Night Shades
- Acrylic Kitchen Sink w/ High Rise Faucet
- Mirrored Doors in Slideouts
- Deluxe Roller Drawer Guides
- Deluxe Globe Dinette Light
- Raised Oak Mortise and Tenon Overhead Cabinet Doors
- Fluorescent Light over Kitchen Sink
- Wood Edge Countertop
- Sink Cover
- Sky Light over Tub
- Porch Light on ODS
- Hitch Light
- Smoke Detector
- LP Detector
- Chrome Rings and Caps
- Adjustable Jake Plate
- Exterior Shower
- 6 Gal. Gas/Electric DSI Water Heater

Optional Designer Package:

- Sink Covers
- Bathroom Accessories
- Posterest Mattress
- Assist Grab Handle
- Stove Cover
- Shower Door
- Foot-Flush Toilet
- Stabilizer Jacks

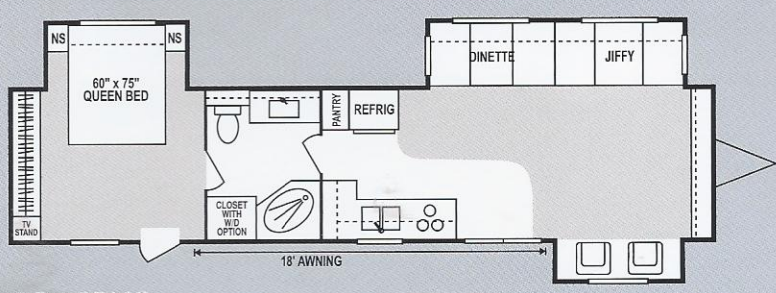
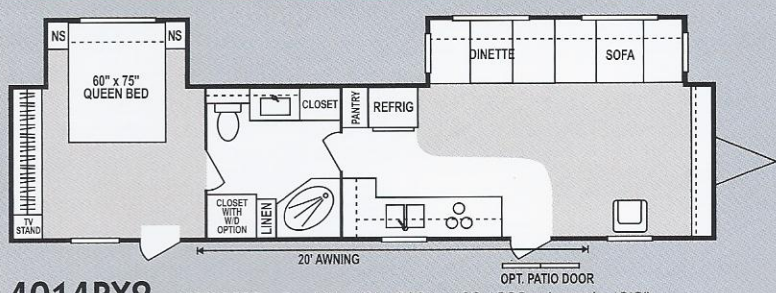
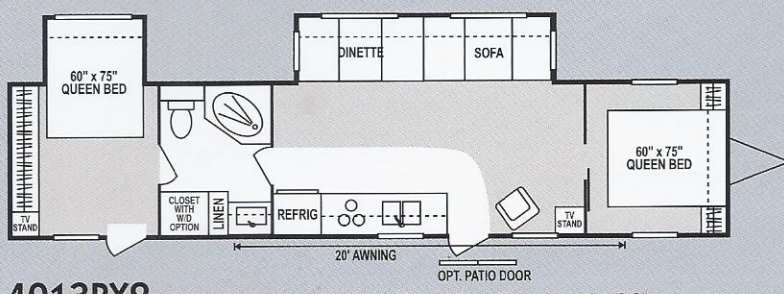
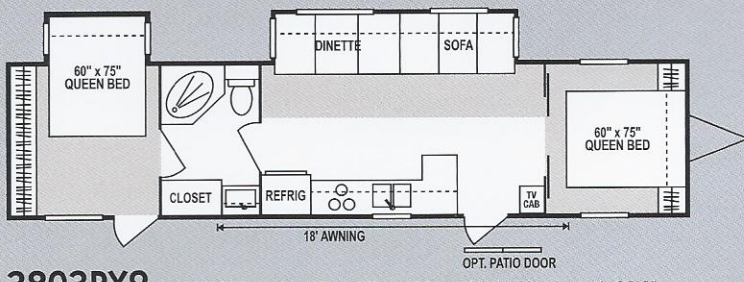
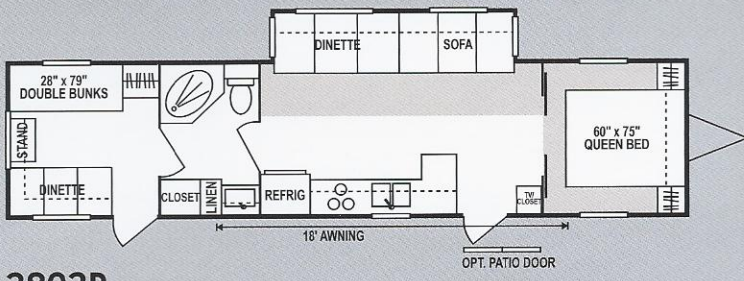
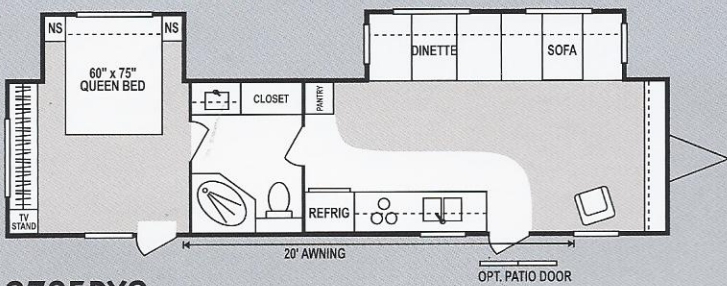
Optional Designer Plus Package:

- 8 Cu.' Refrigerator w/ Raised Oak Panel
- R14 Roof Insulation
- 40" Trunk Door in PSO *
- Fantastic Fan
- Slider Windows in PSO *
- Security Light on DS
- Black Tank Flush System *
- Chrome Bumper Cover

Additional Options Available:

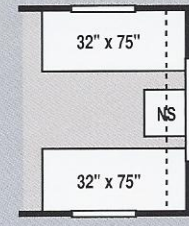
- Fiberglass Exterior
- 15,000 BTU A/C
- Ladder
- Power Jack
- Pull Out Pantry *
- Recliner *
- Patio Door
- Outside Grill
- Shocks
- Spare Tire
- Spare Tire Carrier
- Spare Tire Cover
- Tinted Windows
- 110v House type Refrigerator
- House type Toilet (no tanks)
- CSA (Canada Only)

* where applicable

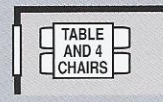


Featured Options

Customize your new Destination Camping Trailer by selecting from these popular options. Floor plans indicate available options on each unit. Ask your dealer for details



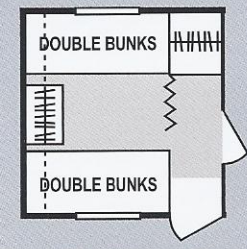
Option 2
Optional Twin Beds



Option 4
Table and Chairs



Option 5
Hide-a-Bed



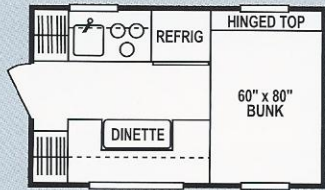
Option 7
Double Bunks

Featured Options Available:

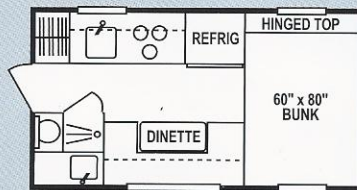
- 3705PX2: Options 4 & 5
- 3803P: Options 2,4,5 & 7
- 3803PX2: Options 2,4 & 5
- 4013PX2: Options 2,4 & 5
- 4014PX2: Options 4 & 5
- 4014PX3: Options 4 & 5



Standard Metal Siding
(also available in optional fiberglass siding)



801



951

	801 *	951 *
UVW (Unloaded Vehicle Wt.)	1600	1960
Interior Height	78"	78"
Exterior Width	94"	94"
Exterior Length	8'	9'5"
Exterior Height **	85"	85"
Refrigerator (cu.')	2.7	3.5
Water Heater Cap. (gal.)	N/A	6
Fresh Water Cap. (gal.)	20	20
Waste Water Cap. (gal.)	N/A	6
Gray Water Cap. (gal.)	N/A	6
LP Gas Cap. (lbs.)	40	40

* Limited Models (all fiberglass) adds approximately 10% to total weight.

** Exterior Height does NOT include A/C.

Standard Features:

- Single Door Refrigerator
- 6 Gal. Water Heater (951)
- Three Burner Hot Plate
- Wired for A/C
- Sundeck
- Ladder
- Three Camper Jacks
- Converter
- Furnace
- Two 20 lb. Gas Bottles
- Rubber Roof

Additional Options Available:

- Fiberglass Exterior
- TV Antenna
- TV Booster
- Stereo/Cassette
- Stereo/CD Player
- 16" Oven
- Water Heater DSI 6 Gal. Gas
- Water Heater DSI 6 Gal. Gas/Electric
- Stove Cover
- Sink Cover
- Toilet (801)
- Up and Out Doors
- Cabinet Bunk
- 7000 BTU A/C
- Four Screw Jacks
- Screw Jacks – Dually Ext. Set
- Canadian CSA
- Front Cap (Std. on Fiberglass Units)

Truck Camper Construction Features:

- 5/8" Tongue and Groove Plywood Floors
- .024 MESA Metal Sidewalls
- 2 x 2 Studs, 16" O.C. and Closer
- 3.6 LUAN Paneling
- 3.6 LUAN Ceiling Board
- Fiberglass Insulation R7 (Sidewalls and Roof)
- One Piece Rubber Roof w/3/8" Deck Board
- 2 x 3 Tapered Rafters, 16" O.C.

2X2 WARRANTY – The K-Z 2x2 Warranty is a manufacturer's warranty. Each K-Z product is warrantied to the original purchaser for twenty-four (24) months from the original date of purchase. Coverage includes appliances, components, construction and FULL structure. Our warranty is also transferable within the first two (2) years for a small processing fee. For a copy of the warranty with full terms and conditions, ask your local K-Z Dealer or visit our web site at <http://www.kz-rv.com>.

VEHICLE LOADING – Every effort has been made to provide the greatest number of options for the recreational owner. Each owner is responsible to select loads allowing the recreational vehicle to remain within the manufacturer's specified chassis weight limits. Do not overload the recreational vehicle.

UNLOADED VEHICLE WEIGHT (UVW) – The typical weight of this trailer as built at the factory. The UVW does not include cargo, LP gas, fresh water, options or dealer-installed accessories.

GROSS VEHICLE WEIGHT RATING (GVWR) – The maximum permissible weight of the trailer, including the UVW plus passengers, all cargo, personal items, fluids, options and dealer-installed accessories. The GVRW is equal to or greater than the sum of the UVW and the NCC.

NET CARRYING CAPACITY (NCC) – The maximum weight of all passengers, personal items, fresh water, food, tools, LP gas, other cargo and dealer-installed accessories* that can be carried by the trailer. NCC is equal to or less than GVWR minus UVW.

* The addition of options will decrease the NCC.

It is important for your safety and enjoyment that your tow vehicle be adequately sized and equipped to tow and handle the GVWR of the RV you select. Review weights and rating of your tow vehicle and consult a competent advisor for questions or advice. Whether you are new to RVing or a seasoned veteran, get a feel for the performance of your tow vehicle and the RV together before heading out on the roadways. When you tow an RV, you must drive differently than you do when driving a single vehicle. Practice hooking up, driving, backing up and braking in a safe environment or seek out professional instruction.

See specification chart above. K-Z affixes a weight label to each new RV which lists weight information for that vehicle.

NOTE: This information is intended as a guide only. Weights of individual vehicles are approximate. Consult your Owner's Manual for complete loading, weighing and towing instructions. All weights may vary.

Awarded to K-Z
six years in a row.



Dealer:

Jerry's Trailers & Campers, Inc.
2601 South 13th St.
Norfolk, NE 68701
(402) 371-1306
www.jerrystrailers.com



RVIA

K-Z • 9270 West U.S. 20 • Shipshewana, IN 46565
E-Mail kz@kz-rv.com • www.kz-rv.com

Due to continual research and advances, manufacturer reserves the right to change specifications, design, price and equipment without notice, and assumes no responsibility for any error in this literature. Some items shown are not included as standard or optional equipment.

©2006K-Z

11/7/05 75M