

**NEW VISION<sup>®</sup>**

**S P O R T S T E R**

**by K-Z**

**Fifth Wheels**



**The Toy Hauler  
that hauls them all!**

# NEW VISION

S P O R T S T E R

Toy Hauler Fifth Wheels by K-Z



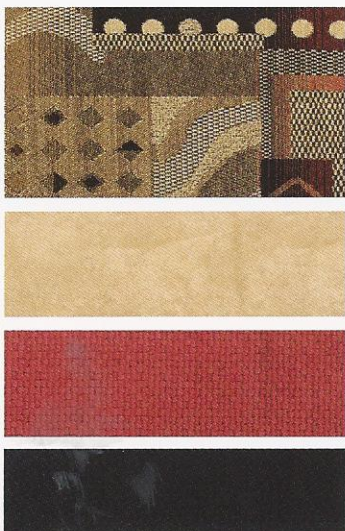
37FKx2 shown with Royale décor

**ATTENTION:**  
Outdoor enthusiasts!

Don't leave your cycles and ATVs at home when you can enjoy the excitement, convenience and comforts of a

**K-Z** Toy Hauler.

Adrenaline



Claret



Ebony



Royale





**Standard Convenience Package:**

- EZ Lube Axles
- 13,500 BTU A/C
- Hi Output Range w/Auto Igniter and 22" Oven
- Gel Coat High Gloss Exterior
- Tinted Safety Windows
- Foot Flush Toilet
- Water Heater By Pass
- TV Antenna w/Booster
- Two Kitchen Sink Covers
- Microwave
- Awning

**Standard Convenience Plus Package:**

- Fold-Away Entry Handle
- Electric Power Front Jacks
- Ladder
- 10 Gal. Gas/Elec. Water Heater DSI
- 50 Amp Service
- Stove Cover
- Black Tank Flush System
- Postrest Mattress
- Color TV
- Two Security Lights
- Stabilizer Jacks
- Shock Absorbers
- Spare Tire
- Spare Tire Hoist
- Skylight Over Shower
- Wired for Satellite
- AM/FM CD DVD w/Surround Sound
- Raised Panel Refer Front
- Neo-Angle Fiberglass Shower

**Comfort Package:**

- 15,000 BTU A/C
- Day-Night Shades
- Heated Holding Tanks and Enclosed Underbelly
- Exterior Shower
- Ceiling Fan
- Flex Foil Insulation
- Hide-a-Bed
- 8 Cu.' Refer

**Additional Options:**

- Bedroom Slide
- Fantastic Fan (LR/BR/CARGO)
- Roll Out Tray
- Add-a-Wall
- "G" Rated Tires
- Extra 55 Gal. Fresh Water Tank
- Second Exterior Entry Door in Cargo
- Anti-Skid on Door/Floor
- Ramp Extension/Threshold Ramp
- Wired for Generator
- Bedroom Loft (37' and up)
- Outside Entertainment Center
- Walkie-Talkies
- Aluminum Frame
- Aluminum Wheels
- Recliners
- Satellite Dish
- Table and Four Chairs
- CSA (Canadian Required)
- Pull Down Screen Wall
- Diamond Plate on Door
- Diamond Plate on Sidewalls
- Tuff Ply on Door/Floor
- Power Bed in Cargo
- Tie Down Rings/Rails
- Install Onan Generator (LP/Gas)
- Fuel Cell w/Pump Station w/Fuel Gauge
- Cherry Wood
- Adjustable Work Lights
- Work Cabinet



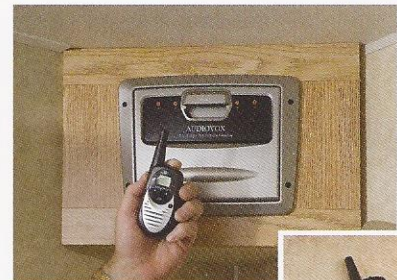
Two Kitchen Sink Covers



Garage Work Cabinet



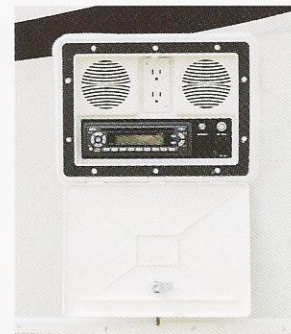
Adjustable Work Lights



Audiovox Two Way Radio Charger w/4 Walkie-Talkies



Exterior Shower



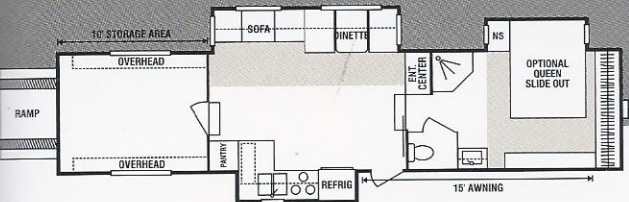
Outside Entertainment Center



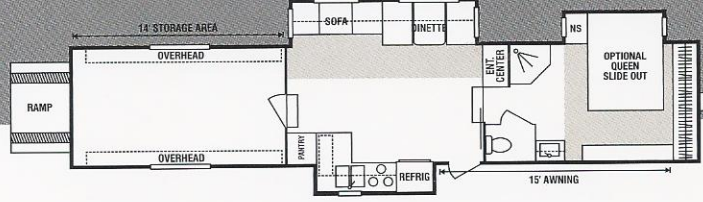
Pull Down Screen Wall



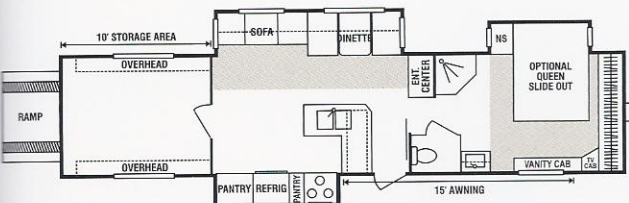
Install Onan Generator



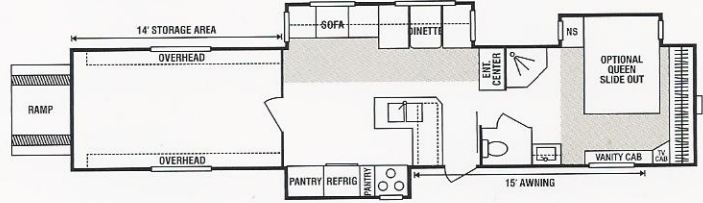
**37FKx2** • UVW 12220 • Dry Hitch Wt. 3213 • NCC 4720 • Length N/A



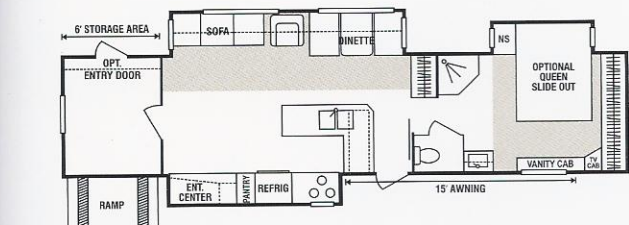
**41FKx2** • UVW 13540 • Dry Hitch Wt. 2960 • NCC 4460 • Length 41'10"



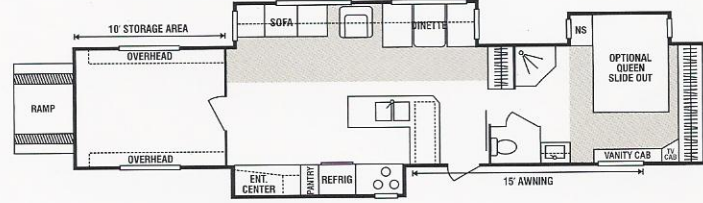
**37Kx2** • UVW 12440 • Dry Hitch Wt. 2940 • NCC 4500 • Length 39'3"



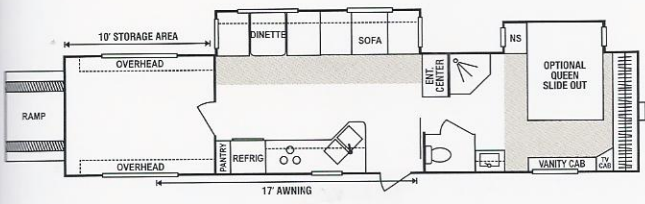
**41Kx2** • UVW 13200 • Dry Hitch Wt. 3220 • NCC 4800 • Length 43'3"



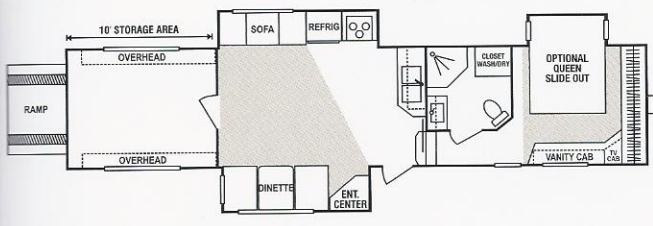
**37KGx2** • UVW 12880 • Dry Hitch Wt. 2920 • NCC 4060 • Length 40'5"



**41KGx2** • UVW 13653 • Dry Hitch Wt. 3195 • NCC 4347 • Length 43'8"

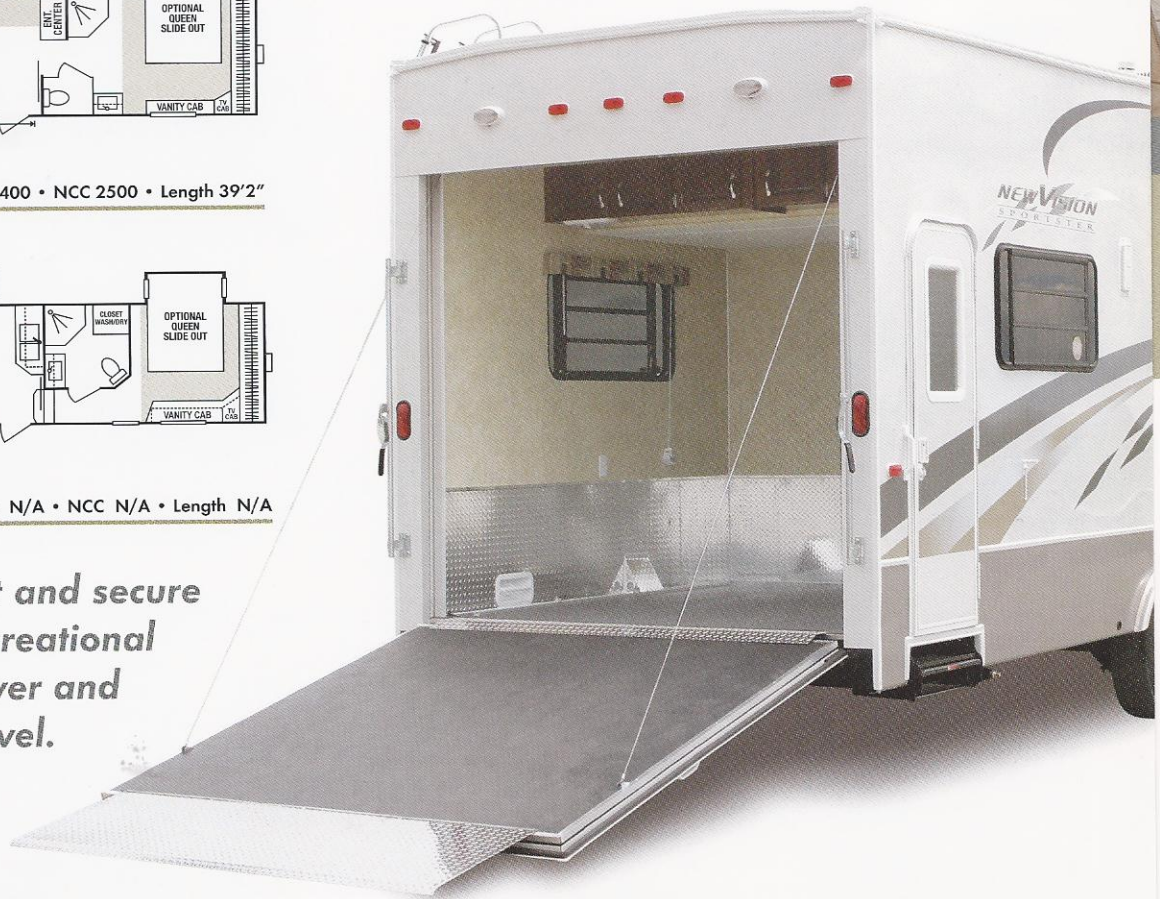


**37Px2** • UVW 11500 • Dry Hitch Wt. 2400 • NCC 2500 • Length 39'2"



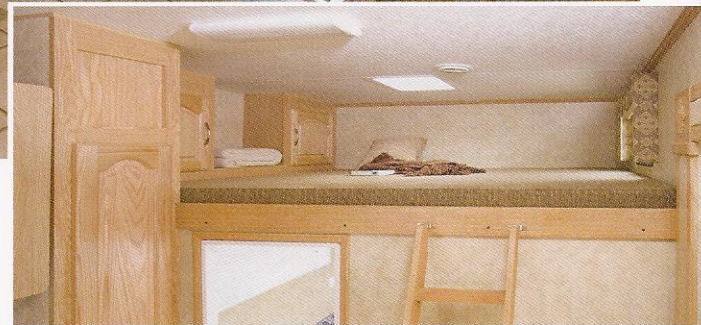
**38SBx2** • UVW N/A • Dry Hitch Wt. N/A • NCC N/A • Length N/A

*Transport, protect and secure your valuable recreational machines whenever and wherever you travel.*

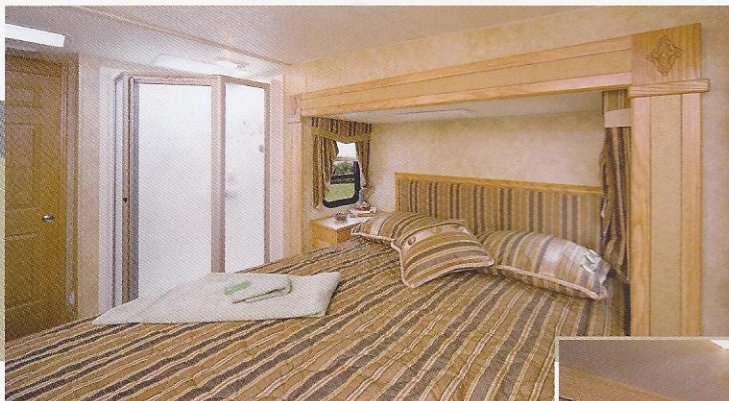




K-Z appreciates your need for rest and comfort after hours of ATV excitement. Select your favorite floorplan and add the options to equip and personalize your toy hauler to your specific needs.



You'll find the optional sleeping loft inviting after a long day of work or play.

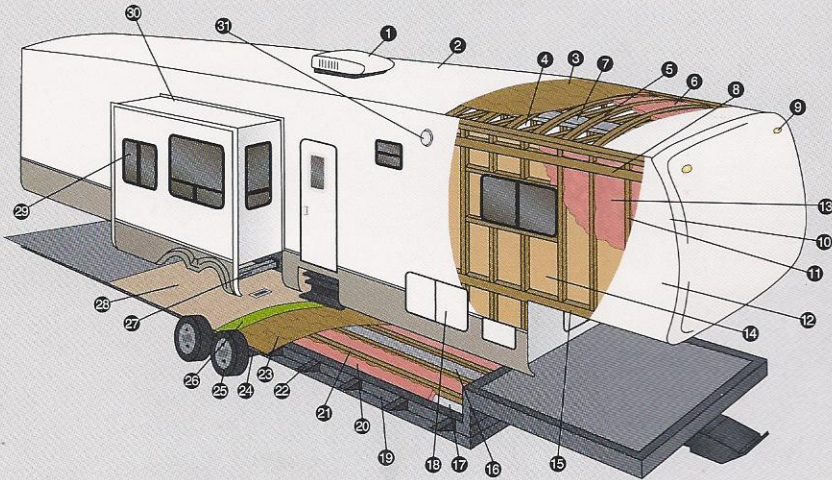


Side slide outs expand living space while the garage area protects your ATV equipment. Enjoy a refreshing shower, relax with a movie complete with surround sound and enjoy a meal prepared in your kitchen.

It's all here - a bed and bath combination featuring a queen size bed, full size shower, lavatory with medicine cabinet and a dressing vanity with plenty of drawers. A large mirrored wardrobe and convenient TV shelf add to this gracious space.



	37FKx2	37Kx2	37KGx2	37Px2	38SBx2	41FKx2	41Kx2	41KGx2
UVW (Unloaded Vehicle Wt.)	12220	12440	12880	11500	N/A	13540	13200	13653
Dry Hitch Wt.	3213	2940	2920	2400	N/A	2960	3220	3195
Dry Axle Wt.	9007	9500	9960	9100	N/A	10580	9980	11550
NCC (Net Carrier Capacity)	4720	4500	4060	2500	N/A	4460	4800	4347
GVWR	16940	16940	16940	14000	N/A	18000	18000	18000
Exterior Width	102"	102"	102"	102"	102"	102"	102"	102"
Exterior Length	N/A	39'3"	40'5"	39'2"	N/A	41'10"	43'3"	43'8"
Exterior Height (with Air Conditioner)	149"	149"	149"	149"	149"	149"	149"	149"
Refrigerator (cu. feet)	6 cu.'	6 cu.'	6 cu.'	6 cu.'	6 cu.'	6 cu.'	6 cu.'	6 cu.'
Water Heater Cap. (gal. – G/E with DSI)	6	6	6	6	6	6	6	6
Fresh Water Cap. (gal.)	55	55	55	55	55	55	55	55
Opt. Water Cap. (gal.)	55	55	55	55	55	55	55	55
Waste Water Cap. (gal.)	50	50	50	50	50	50	50	50
Gray Water Cap. (gal.)	50	50	50	50	50	50	50	50
LP Gas Cap. (lbs.)	60	60	60	60	60	60	60	60
Furnace BTUs (1,000's)	30	30	30	30	30	30	30	30
Tire Size	16"	16"	16"	16"	16"	16"	16"	16"



- 1 13,500 BTU A/C
- 2 One-Piece Seamless Rubber Roof
- 3 3/8" Decking
- 4 Vinyl Interior Ceiling Panel
- 5 4 1/2" Wood Truss Rafters, 16" O.C.
- 6 R-7 Batten Insulation
- 7 Insulated Ductwork
- 8 1 1/2" x 5" Heavy Duty Laminated Wood Headers
- 9 Exterior Clearance and Brake Lights
- 10 2x2 Wood Frame Front and End Walls
- 11 2x2 Wood Studs, 16" O.C.
- 12 Gel Coat Fiberglass Exterior with Integrated Luan Backing
- 13 R-7 Batten Insulation
- 14 Decorative Luan Wall Board
- 15 Single 8" Wood Stringer
- 16 Residential Style Ducted Heat Run in Floor
- 17 Darco® Moisture Barrier
- 18 Large Capacity Pass-Thru Exterior Storage with Radius Doors Front and Side for Easy Access
- 19 Heavy Duty I-beam Frame Construction
- 20 R-7 Batten Insulation
- 21 2x3 Wooden Floor Joists, 16" O.C.
- 22 Fully Welded Outriggers
- 23 5/8" Tongue and Groove Plywood
- 24 Heavy Duty Leaf Spring Axles
- 25 Heavy Duty Steel Wheels with Trim Rings and Center Caps
- 26 Residential Style Carpet Pad
- 27 Rack and Pinion Electric Slide with Manual Override with 2x3 Box Tube Slide Out Ram
- 28 28 oz. Residential Carpet or Linoleum
- 29 Tinted Safety Glass Windows
- 30 Triple Sealed Slide Outs
- 31 Exterior Security/Scare Lights

An innovative leader in RV design and development, K-Z's desire is to engineer affordable, high-value products that deliver customer satisfaction year after year.

See for yourself why K-Z has been awarded the Dealer Satisfaction Index six years in a row.



**2X2 WARRANTY** – The K-Z 2x2 Warranty is a manufacturer's warranty. Each K-Z product is warranted to the original purchaser for twenty-four (24) months from the original date of purchase. Coverage includes appliances, components, construction and FULL structure. Our warranty is also transferable within the first two (2) years for a small processing fee. For a copy of the warranty with full terms and conditions, ask your local K-Z Dealer or visit our web site at <http://www.kz-rv.com>.

**VEHICLE LOADING** – Every effort has been made to provide the greatest number of options for the recreational owner. Each owner is responsible to select loads allowing the recreational vehicle to remain within the manufacturer's specified chassis weight limits. Do not overload the recreational vehicle.

**UNLOADED VEHICLE WEIGHT (UVW)** – The typical weight of this trailer as built at the factory. The UVW does not include cargo, LP gas, fresh water, options or dealer-installed accessories.

**GROSS VEHICLE WEIGHT RATING (GVWR)** – The maximum permissible weight of the trailer, including the UVW plus passengers, all cargo, personal items, fluids, options and dealer-installed accessories. The GVRW is equal to or greater than the sum of the UVW and the NCC.

**NET CARRYING CAPACITY (NCC)** – The maximum weight of all passengers, personal items, fresh water, food, tools, LP gas, other cargo and dealer-installed accessories\* that can be carried by the trailer. NCC is equal to or less than GVWR minus UVW.

\* The addition of options will decrease the NCC.

It is important for your safety and enjoyment that your tow vehicle be adequately sized and equipped to tow and handle the GVWR of the RV you select. Review weights and rating of your tow vehicle and consult a competent advisor for questions or advice. Whether you are new to RVing or a seasoned veteran, get a feel for the performance of your tow vehicle and the RV together before heading out on the roadways. When you tow an RV, you must drive differently than you do when driving a single vehicle. Practice hooking up, driving, backing up and braking in a safe environment or seek out professional instruction.

See specification chart above. K-Z affixes a weight label to each new RV which lists weight information for that vehicle.

**NOTE:** This information is intended as a guide only. Weights of individual vehicles are approximate. Consult your Owner's Manual for complete loading, weighing and towing instructions. All weights may vary.

Dealer:

**Jerry's Trailers & Campers, Inc.**  
 2601 South 13th St.  
 Norfolk, NE 68701  
 (402) 371-1306  
[www.jerrystrailers.com](http://www.jerrystrailers.com)



K-Z • 9270 West U.S. 20 • Shipshewana, IN 46565  
 E-Mail [kz@kz-rv.com](mailto:kz@kz-rv.com) • [www.kz-rv.com](http://www.kz-rv.com)



Due to continual research and advances, manufacturer reserves the right to change specifications, design, price and equipment without notice, and assumes no responsibility for any error in this literature. Some items shown are not included as standard or optional equipment.

©2006K-Z

11/15/05 75M