

Montego Bay

by KZ



Make Every Day a Vacation.





Montego BayTM

by K-Z

Just like its namesake - you can anticipate great times as you make every day a vacation and enjoy luxury accommodations wherever you go.



Neo-angle fiberglass shower



The living room features a 27" color TV, optional electric fireplace and dual lounge chairs that complement the sofa.



Gracious and spacious



Attention to detail and the rich look of cherry



For a décor on the lighter side, you'll like our natural maple interior which exhibits all the enduring qualities of fine residential style cabinetry and trim. In addition, the color coordinated accent fabrics set the stage for you to add your own personal touches for all the comforts of your new "home away from home".

Montego Bay™ is designed, engineered and built to meet the higher standards of today's extended-stay RV travelers.



Multiple side slide-outs enhance your living space.



The 8 cubic foot capacity refrigerator sports a raised panel front. Storage is built in and well organized, providing an abundance of work space.



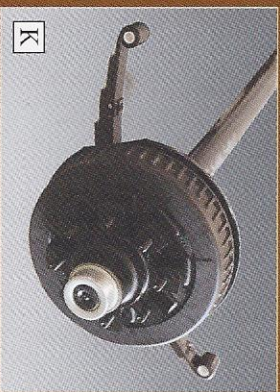
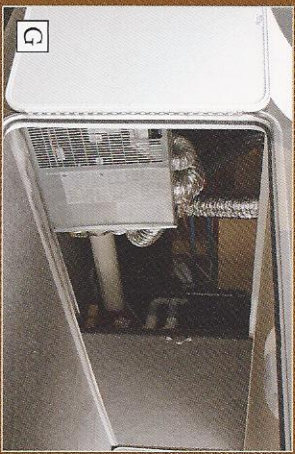
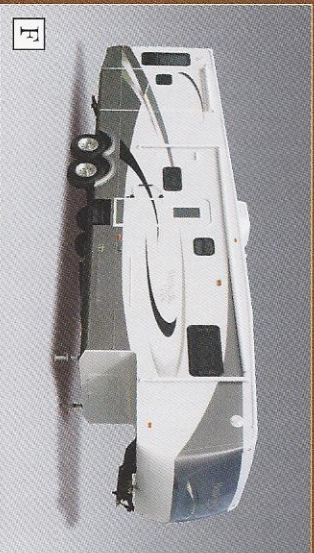
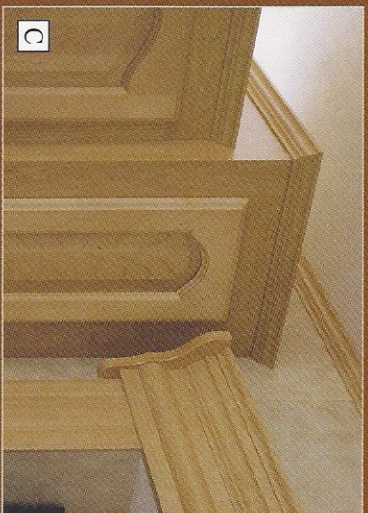
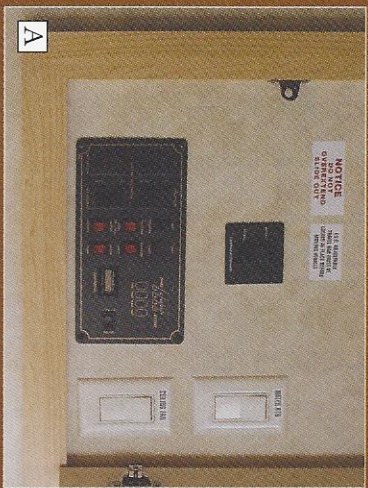
All the frills are here...



Relax and prepare to retreat to the queen, or optional king, size bed that awaits you tonight and every night to come.



Features



Interior

- A** Electrical Command Center
- B** 5.1 Surround Sound with DVD and Recessed Speakers
- C** Residential Cabinetry with Crown Molding
- D** Large Skylight over Shower
- E** Optional Corian® Countertop

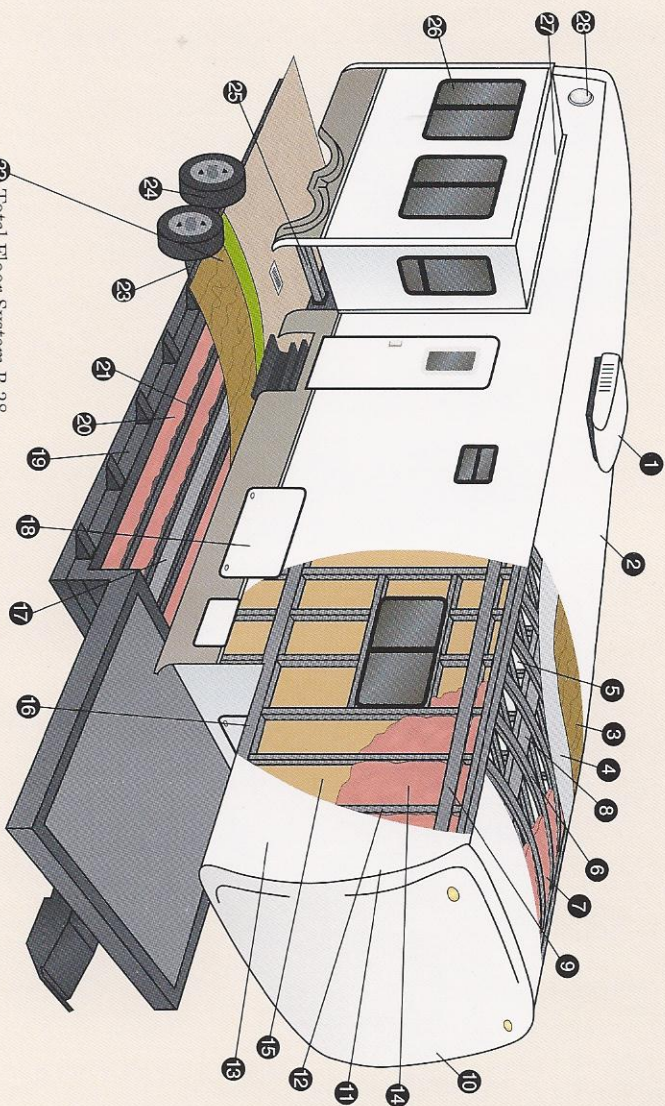
Exterior

- F** Optional Exterior Paint Selection
- G** Dedicated Utility Compartment
- H** Access to Control Center includes; exterior shower, cable and phone hook-ups, sewer hose storage, city water hook-up, fresh water fill, dump valves for holding tanks and hot and cold low point water drain
- I** Flush Slide Out Moldings
- J** 18" Main Frame
- K** 7000 lbs. E-Z Lube Axles
- L** 16" Aluminum Wheels

Montego Bay™
by K-Z



See for yourself why K-Z has been awarded the Dealer Satisfaction Index five years in a row.

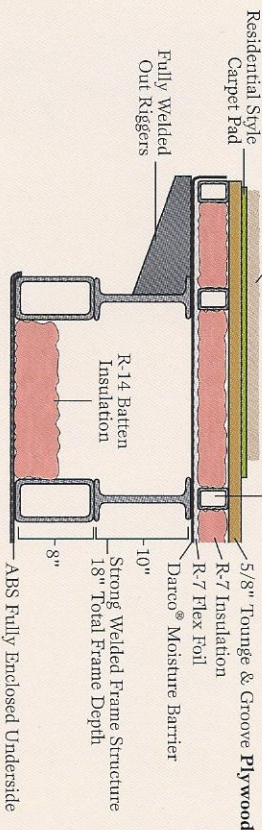


- 1 15,000 BTU A/C
- 2 One-Piece Seamless Royal Tuff-Ply Roof
- 3 1/2" Bonded **Plywood**
- 4 R-7 Flex Foil (total roof system of R-21)
- 5 Luan Decorative Panel Ceiling
- 6 5 3/4" Aluminum Truss Rafter, 16" O.C.
- 7 R-14 Batten Insulation
- 8 Insulated Ductwork
- 9 Heavy Duty Aluminum Headers
- 10 One-Piece Gel Coat Fiberglass End Cap (front and rear)
- 11 Aluminum Frame Front and End Walls
- 12 16" O.C. Aluminum 2x2 Sidelwall Studs
- 13 Gel Coat Fiberglass Exterior with Integrated Luan Backing
- 14 R-7 Batten Insulation
- 15 Luan Panel Decorative Wall Board
- 16 5" Aluminum Framing
- 17 Residential Style Ducted Heat Run in Floor
- 18 Large Capacity Pass-Thru Storage with Gas-Assist Lift Doors
- 19 18" Main Frame (10" I-beam + 8" Box-beam structure)
- 20 R-14 Batten Insulation
- 21 2x3 Double Welded Aluminum Floor Joists, 16" O.C.
- 22 Floor Structure Detail Cut-A-Way
- 23 7,000 lb. Axles with Shock Absorbers
- 24 Heavy Duty Aluminum Wheels with 16" Tires
- 25 Rack and Pinion Electric Slide with Manual Override and 3x3 Box Tube Slide Out Ram
- 26 Tinted Safety Glass Windows
- 27 Triple Seal Flush Mount Slide Outs
- 28 Exterior Security/Scare Lights

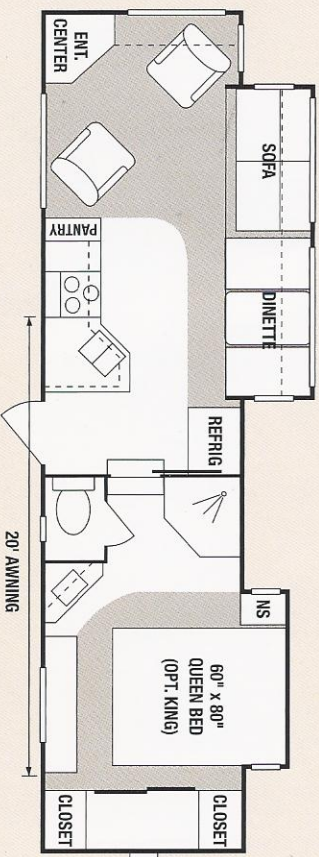
22 Total Floor System R-28

28 oz. Residential Carpet/
or Armstrong Linoleum

2x3 Aluminum Floor Joists
16" O.C. Double Welded

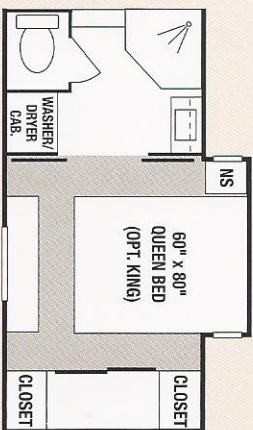


ABS Fully Enclosed Underside

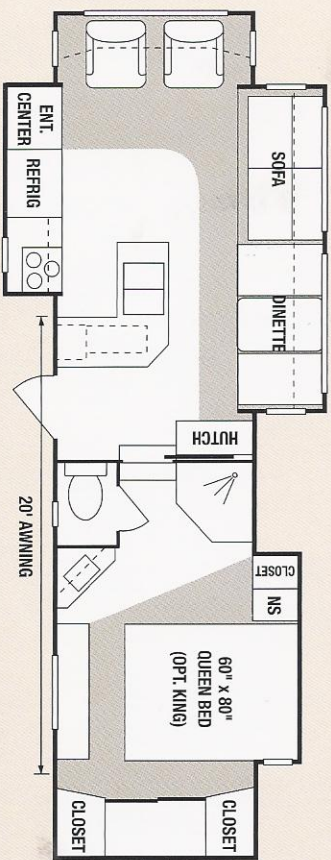


OPTIONAL

not available on 29RE-2 and 34SB-3



"B" Bed/Bath



29RE-2

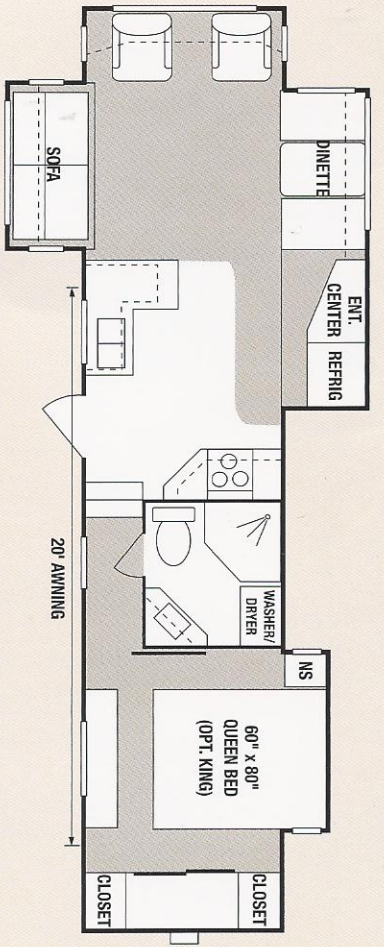
UVW (Unloaded Vehicle Wt.) - 10480
NCC (Net Carrying Capacity) - 4920

Dry Hitch Weight - 2300
Exterior Length - 34'3"

30KS-3

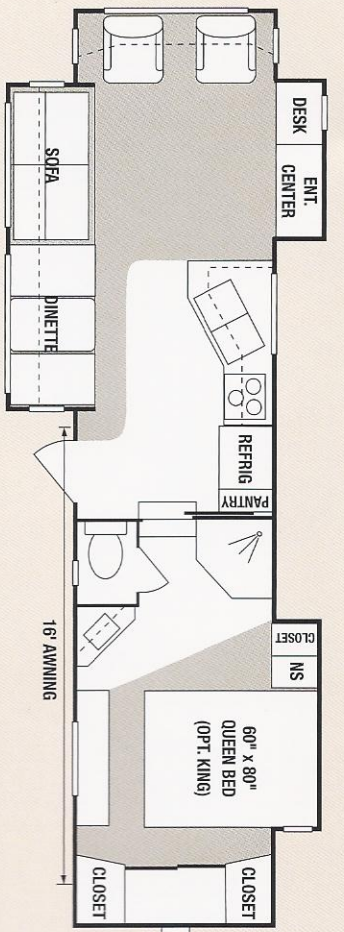
UVW (Unloaded Vehicle Wt.) - 11280
NCC (Net Carrying Capacity) - 4120

Dry Hitch Weight - 2180
Exterior Length - 34'6"



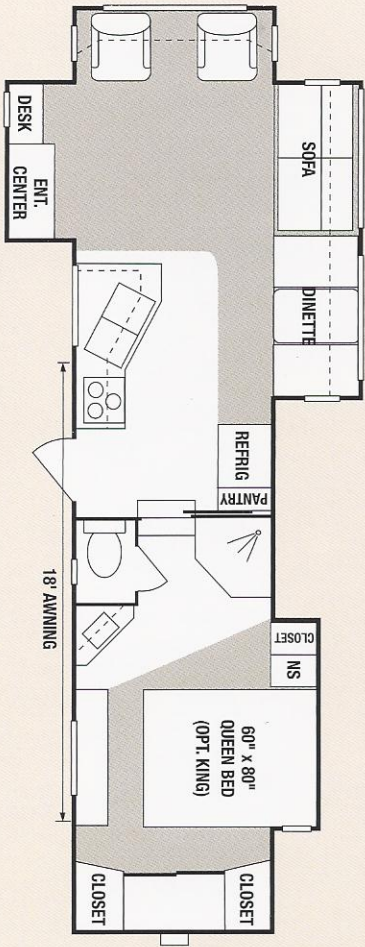
34SB-3

UVW (Unloaded Vehicle Wt.) - 11882 Dry Hitch Weight - 2445
 NCC (Net Carrying Capacity) - 3518 Exterior Length - 37'



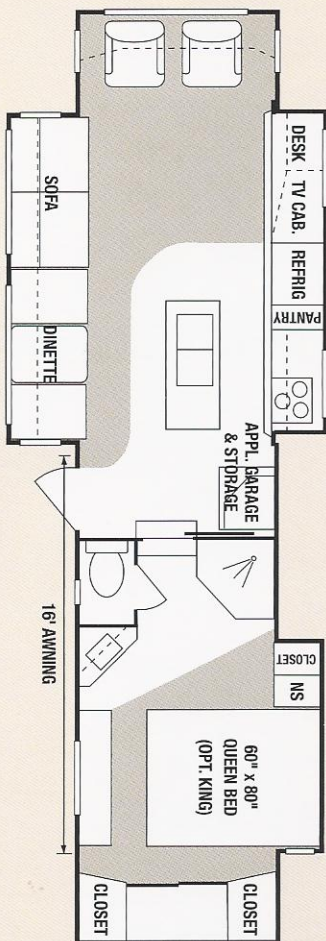
34RL-3

UVW (Unloaded Vehicle Wt.) - 11600 Dry Hitch Weight - 2400
 NCC (Net Carrying Capacity) - 3800 Exterior Length - 36'9"



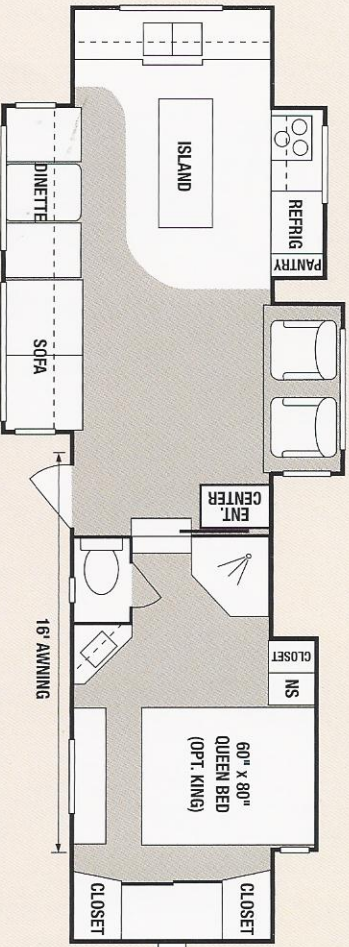
35RL-3

UVW (Unloaded Vehicle Wt.) - 11763 Dry Hitch Weight - 2143
 NCC (Net Carrying Capacity) - 3637 Exterior Length - 36'11"



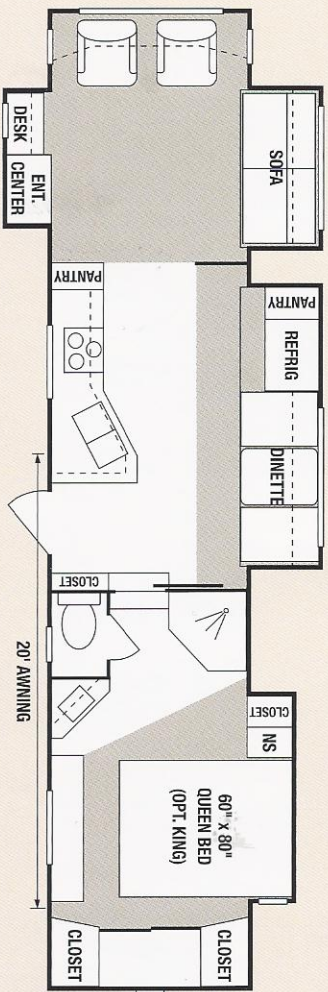
36IK-3

UVW (Unloaded Vehicle Wt.) - 11660 Dry Hitch Weight - 2100
 NCC (Net Carrying Capacity) - 3740 Exterior Length - 37'



36RK-4

UVW (Unloaded Vehicle Wt.) - 12100 Dry Hitch Weight - 2170
 NCC (Net Carrying Capacity) - 3300 Exterior Length - 37'4"



37RL-4

UVW (Unloaded Vehicle Wt.) - 12760 Dry Hitch Weight - 2100
 NCC (Net Carrying Capacity) - 2640 Exterior Length - 39'4"

J

K

L

DécorS

You'll appreciate three distinctive interior décors with fabrics selected for beauty and durability.



claret



ebony



royale

Specifications

Models

	29RE-2	30KS-3	34RL-3	34SB-3	35RL-3	36IK-3	36RK-4	37RL-4
UVW (Unloaded Vehicle Wt.)	10480	11280	11600	11882	11763	11660	12100	12760
Dry Hitch Weight	2300	2180	2400	2445	2143	2100	2170	2100
Dry Axle Weight	8180	9100	9200	9437	9620	9560	9930	10660
NCC (Net Carrying Capacity)	4920	4120	3800	3518	3637	3740	3300	2640
GVWR	15400	15400	15400	15400	15400	15400	15400	15400
Interior Height	93"	93"	93"	93"	93"	93"	93"	93"
Exterior Width	96"	96"	96"	96"	96"	96"	96"	96"
Exterior Length	34'3"	34'6"	36'9"	37'	36'11"	37'	37'	39'4"
Exterior Height (with A/C)	149.5"	149.5"	149.5"	149.5"	149.5"	149.5"	149.5"	149.5"
Refrigerator (cu. feet)	8	8	8	8	8	8	8	8
Water Heater Cap. (gal.-G/E w/DSI)	10	10	10	10	10	10	10	10
Fresh Water Cap. (gal.)	55	55	55	55	55	55	55	55
Waste Water Cap. (gal.)	50	50	50	50	50	50	50	50
Gray Water Cap. (gal.)	50	50	50	50	50	50	50	50
LP Gas Cap. (lbs.)	60	60	60	60	60	60	60	60
Furnace BTUs (1,000's)	35	35	35	35	35	35	35	35
Tire Size	16"	16"	16"	16"	16"	16"	16"	16"

NOTE: This information is intended as a guide only. Weights of individual vehicles are approximate. Consult your Owner's Manual for complete loading, weighing and towing instructions. All weights may vary.

2X2 WARRANTY – The K-Z 2x2 Warranty is a manufacturer's warranty. Each K-Z product is warranted to the original purchaser for twenty-four (24) months from the original date of purchase. Coverage includes appliances, components, construction and FULL structure. Our warranty is also transferable within the first two (2) years for a small processing fee. For a copy of the warranty with full terms and conditions, ask your local K-Z Dealer or visit our web site at <http://www.kz-rv.com>.

VEHICLE LOADING – Every effort has been made to provide the greatest number of options for the recreational owner. Each owner is responsible to select loads allowing the recreational vehicle to remain within the manufacturer's specified chassis weight limits. Do not overload the recreational vehicle.

UNLOADED VEHICLE WEIGHT (UVW) – The typical weight of this trailer as built at the factory. The UVW does not include cargo, LP gas, fresh water, options or dealer-installed accessories.

GROSS VEHICLE WEIGHT RATING (GVWR) – The maximum permissible weight of the trailer, including the UVW plus passengers, all cargo, personal items, fluids, options and dealer-installed accessories. The GVWR is equal to or greater than the sum of the UVW and the NCC.

NET CARRYING CAPACITY (NCC) – The maximum weight of all passengers, personal items, fresh water, food, tools, LP gas, other cargo and dealer-installed accessories* that can be carried by the trailer. NCC is equal to or less than GVWR minus UVW.

* The addition of options will decrease the NCC. It is important for your safety and enjoyment that your tow vehicle be adequately sized and equipped to tow and handle the GVWR of the RV you select. Review weights and rating of your tow vehicle and consult a competent advisor for questions or advice. Whether you are new to RVing or a seasoned veteran, get a feel for the performance of your tow vehicle and the RV together before heading out on the roadways. When you tow an RV, you must drive differently than you do when driving a single vehicle. Practice hooking up, driving, backing up and braking in a safe environment or seek out professional instruction.

See specification chart above. K-Z affixes a weight label to each new RV which lists weight information for that vehicle.



*A Reputation Designed and built on
Over Three Decades of Experience.*

Standard Convenience Package:

- EZ Lube Axles
- Tinted Safety Glass
- 13,500 BTU Air Conditioner
- Foot Flush Toilet
- Hi Output Burners w/Auto Igniter and 22" Oven
- Water Heater By-Pass
- Laundry Basket

Standard Convenience Plus Package:

- Fold-Away Entry Handle
- Two Security Lights
- Stabilizer Jacks
- Electric Power Front Jacks
- Ladder
- Shock Absorbers
- Spare Tire
- Spare Tire Hoist
- 10 gal. Gas/Elec Water Heater DSI
- Skylight Over Shower

Comfort Package:

- 15,000 btu Air Conditioner
- Exterior Shower
- Day-Night Shades
- Table and Four Chairs
- Hide-A-Bed
- Ceiling Fan

Options Available:

- Central Vacuum
- CSA (Canadian Required)
- Fantastic Fan (LR / Kit / Bath)
- Satellite Dish
- Corian® Countertops
- Fireplace
- 10 cu. ft. Refrigerator
- 12 cu. ft. Side-by-Side Refrigerator*
- IceMaker * (N/A in Kitchen PSO Units)
- Booth Dinette
- Plumb for W/D
- Pull Out Pantry*
- Recliner (1 or 2)

- Reading Lights
- TV Antenna w/Booster
- Two Kitchen Sink Covers
- Gel Coat High Gloss Exterior
- Aluminum Frame
- Microwave
- Awning

- Wire for Satellite
- 65 Amp Converter
- AM/FM, CD/DVD w/Surround Sound
- Black Water Tank Flush System
- Stove Cover
- Raised Panel Refrigerator Front
- Neo-Angle Fiberglass Shower
- Pillowtop Mattress
- 27" Color TV

- 8 cu ft. Refrigerator
- FlexFoil™ Insulation - Ceiling and Floor
- Heated Holding Tanks
- Enclosed Underbelly
- Aluminum Wheels

- Roll Out Tray
- Slide Out Covers
- Power Awning
- Thermo-Pane Windows
- TV Slider Swivel Shelf *
- Wire for Generator
- 2nd 13,500 A/C in Bedroom
- 40# LPG Bottles
- MOR/ryde Suspension
- Cherry Wood Color
- "G" Rated Tires

* where applicable



K-Z
9270 West U.S. 20 • Shipshewana, IN 46565
e-mail kz@kzrv.com • www.kz-rv.com



Plant Location: 1 mile west of S.R. 5 on U.S. 20

Due to continual research and advances, manufacturer reserves the right to change specifications, design, price and equipment without notice, and assumes no responsibility for any error in this literature.
Some items shown are not included as standard or optional equipment.
©2006K-Z

10/30/05 504

Jerry's Trailers & Campers, Inc.
2601 South 13th St.
Norfolk, NE 68701
(402) 371-1306
www.jerrystrailers.com