

FRONTIER™

by K-Z

Travel Trailers
& Fifth Wheels



Go Ahead,
Explore a
new Frontier...

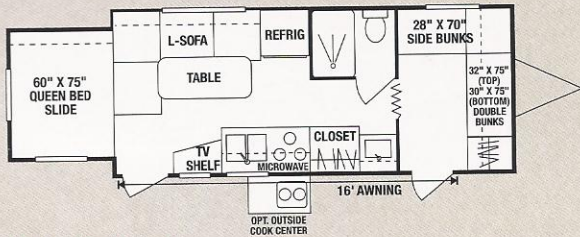


Frontier™

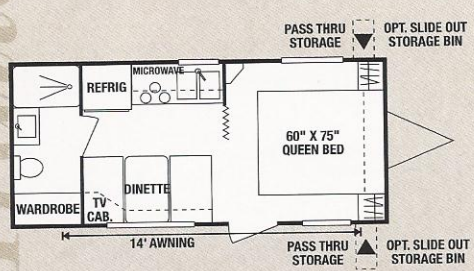
2802PF shown with Foliage décor

Built upon 34 years of RV experience, K-Z products have earned a time-tested record of excellence.

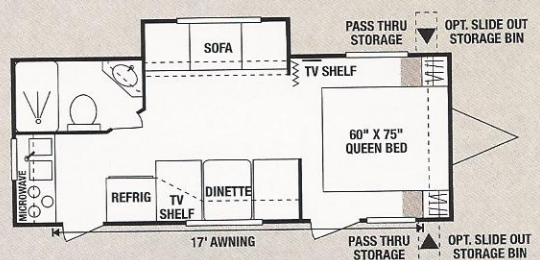
Whether for a family or a retired couple, these Frontier™ models all share the proven virtues of laminated sidewall construction resulting in light weight strength and efficient functional designs.



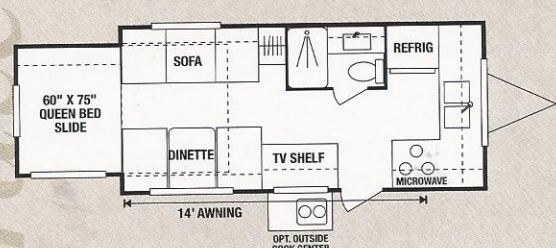
2205QS-F • UVW 4160 • Dry Hitch Wt. 410 • NCC 1840 • Length 23'



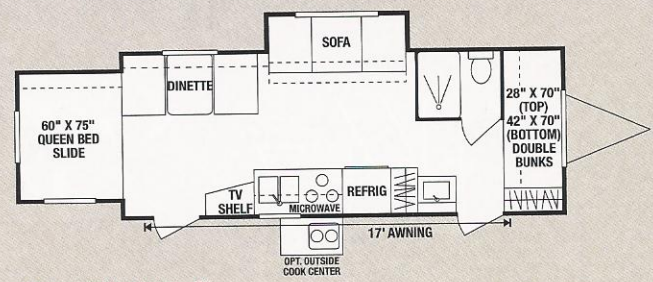
2003F • UVW 3500 • Dry Hitch Wt. 380 • NCC 2500 • Length 21'6"



2303P-F • UVW 4670 • Dry Hitch Wt. 490 • NCC 2330 • Length 25'2"

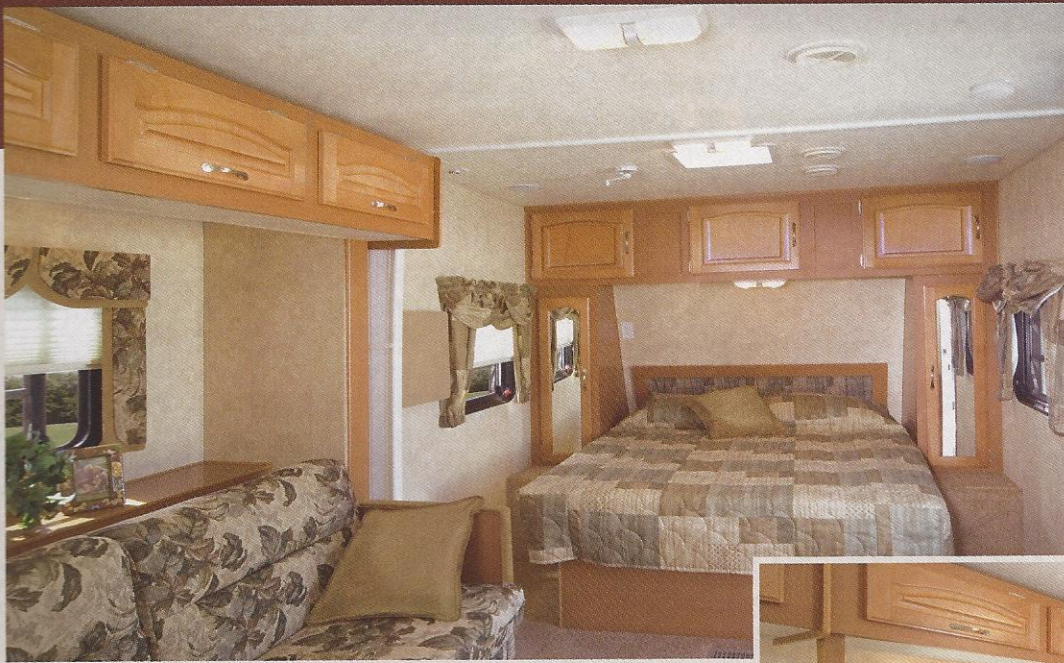


2101QS-F • UVW 4100 • Dry Hitch Wt. 500 • NCC 1900 • Length 22'4"



2405PQS-F • UVW 5300 • Dry Hitch Wt. 480 • NCC 1700 • Length 25'5"

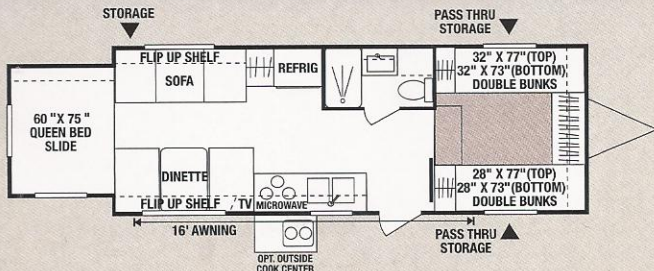
Travel Trailers



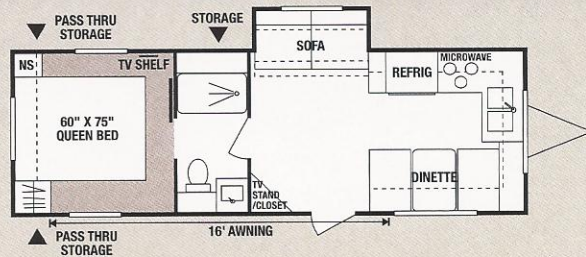
Greater floor space created by this dinette/sofa side slide out is sure to please, as well as large storage drawers under the convertible dinette seating. A fold-out sleeper sofa has a convenient side shelf and recessed open storage compartment. Enjoy bed-time privacy by closing the easy glide door. Relax in the queen size bed featuring dual side mirrored wardrobes and overhead storage.



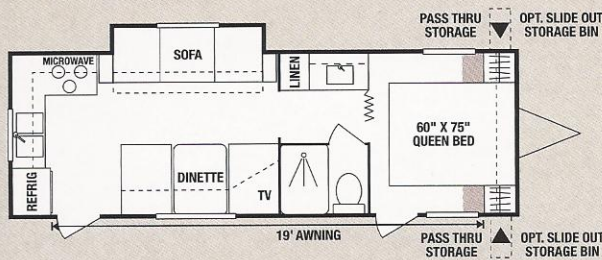
always the Best Buy for the Dollar.



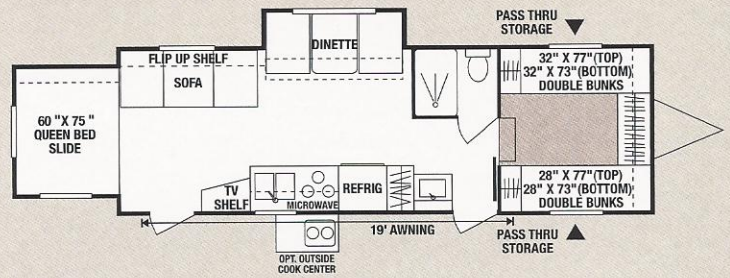
2505QSS-F • UVW 5380 • Dry Hitch Wt. 620 • NCC 1620 • Length 26'3"



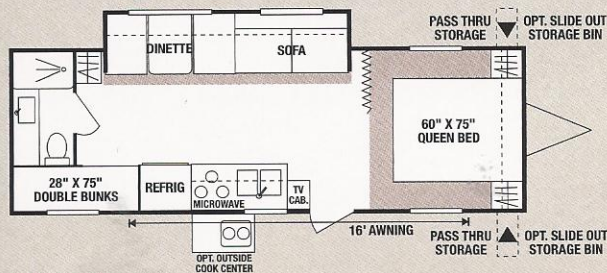
2803P-F • UVW 5260 • Dry Hitch Wt. 860 • NCC 1740 • Length 29'



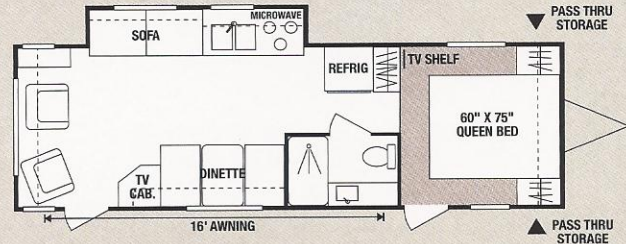
2605P-F • UVW 5080 • Dry Hitch Wt. 490 • NCC 1920 • Length 27'4"



2809PQS-F • UVW 5540 • Dry Hitch Wt. 560 • NCC 1460 • Length 28'7"



2802P-F • UVW 5350 • Dry Hitch Wt. 570 • NCC 1650 • Length 29'



2901P-F • UVW 5570 • Dry Hitch Wt. 730 • NCC 1430 • Length 30'11"

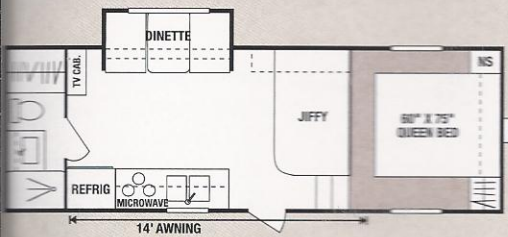


This bath is big on design with all the features you'll need.

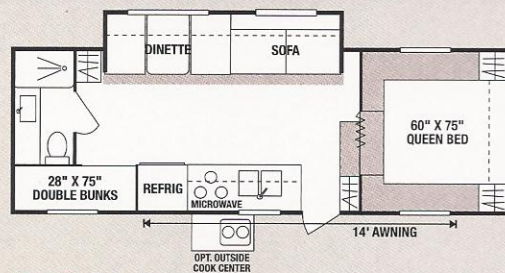


The kitchen features raised panel doors with brushed nickel cabinet hardware, deluxe roller drawer guides, a 6 cubic foot capacity refrigerator, microwave, oven/stove top with cover and more.

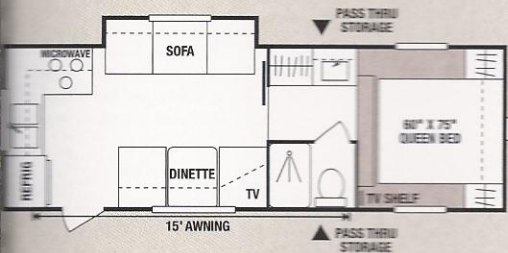
The kids can bed down in double bunks complete with a privacy curtain.



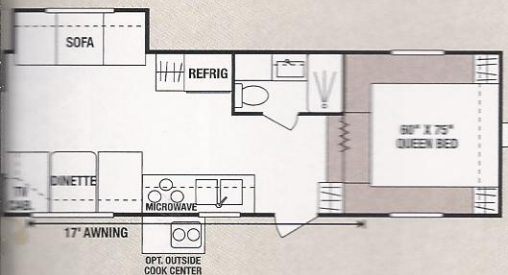
2251P-F • UVW 5600 • Dry Hitch Wt. 880 • NCC 1400 • Length 24'3"



2453P-F • UVW 6090 • Dry Hitch Wt. 1400 • NCC 1910 • Length 26'10"



2352P-F • UVW 5530 • Dry Hitch Wt. 900 • NCC 1470 • Length 24'9"



2353P-F • UVW 5460 • Dry Hitch Wt. 1100 • NCC 1540 • Length 25'1"



Exclusive K-Z design, Patented Manual Easy Rear Slide Queen Bed available on selected model Travel Trailers.

Features



A Fiberglass Front End Cap with Gas Bottle Cover



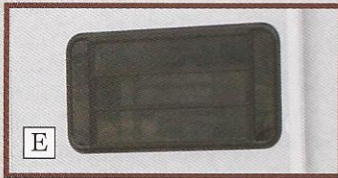
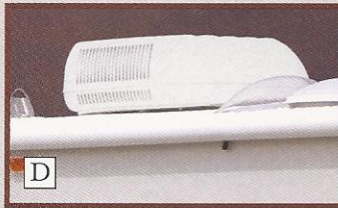
B Outside Cooktop

C Exterior Shower



D 13,500 BTU Air Conditioner

E Radius Windows



STANDARD LIVING PACKAGE

- 13,500 BTU Ducted A/C
- Awning
- Microwave *
- 6 cu' Refrigerator
- Oven
- Stove Cover
- AM-FM Stereo w/CD Player
- Acrylic Sink w/High Rise Faucet
- Outside Cooktop or Outside Grill *
- Double Step
- TV Antenna w/Booster
- Cable Hook Up
- TV Shelf in Bedroom
- Night Shades *
- 2 Sink Covers
- Deluxe Roller Drawer Guides
- 30# Gas Bottles
- Exterior Shower
- Skylight Over Tub & Tub Surround
- Pillows for Sofa *
- Brushed Nickel Faucets
- Brushed Nickel Cabinet Hardware
- Fluorescent Light Over Kitchen Sink
- Bathroom Accessories
- Porch Light on ODS & Hitch Light
- Chrome Rings & Caps
- 40 gal. Fresh Water Tank
- Raised Oak Mortise & Tenon Overhead Cabinet Doors
- Smoke Detector
- LP Detector
- CO Detector
- 6 gal. Gas/Electric DSI Water Heater w/Winter By-Pass Kit
- Straight Axles
- Shower Door
- Heated & Enclosed Underbelly

* Where applicable and codes allow. Note: Some standard features may be cancelled or altered at dealer's request.

ADDITIONAL OPTIONS AVAILABLE

- Fantastic Vent
- Foot Flush Toilet
- Assist Grab Handle
- Battery and Box
- Tinted/Safety Windows
- Spare Tire
- Spare Tire Carrier
- Spare Tire Cover
- 15" Tires
- Chrome Bumper Cover
- Power Jack
- Stabilizer Jacks (2 or 4)
- Oak Cabinetry

Décor options

Amber



Foliage



Sienna

