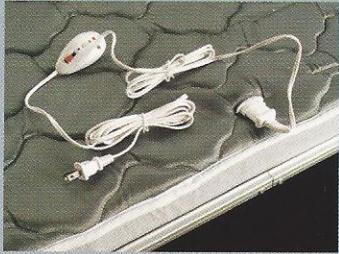


WELCOME TO FOREST RIVER'S
FLAGSTAFF

MAC/LTD & CLASSIC TENT CAMPERS

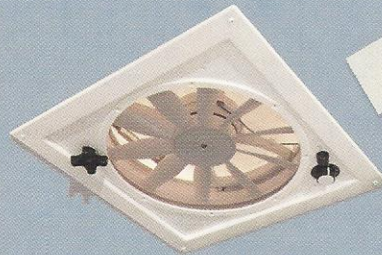




HEATED MATTRESS PADS
(STD. OPT.)



PLYWOOD BUNK ENDS
(STD.)



3-SPEED FAN
(STD. OPT.)



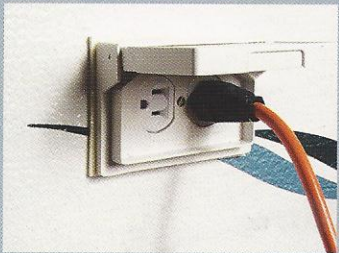
SPARE TIRE
(STD. WITH TRAVEL PACKAGE)



WATER PUMP
(STD.)



METAL DRAWER GUIDES



EXTERIOR ELECTRIC PLUG



**UNDER FLOOR 20
GALLON WATER TANK**
(STD. EXCEPT LTD.)



ONE-PIECE DOOR
(STD. EXCEPT LTD.)



MAC / LTD SERIES

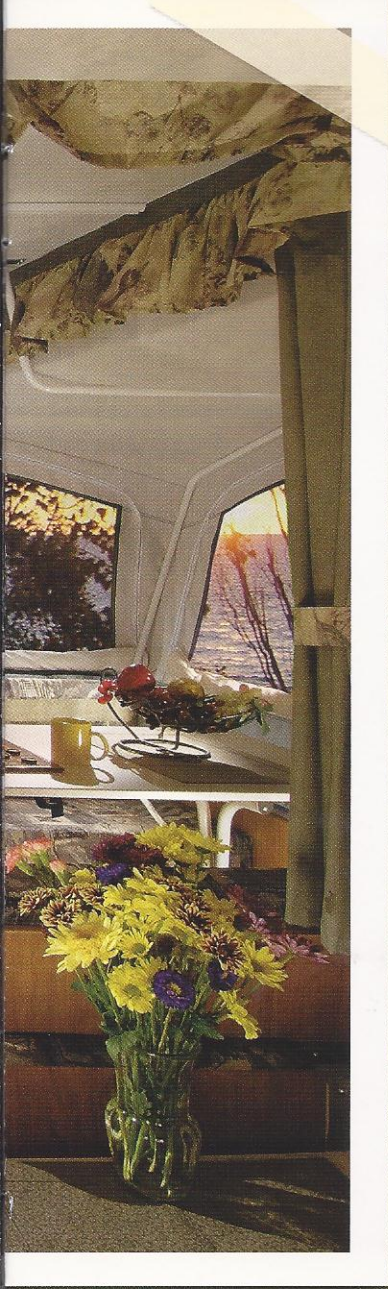
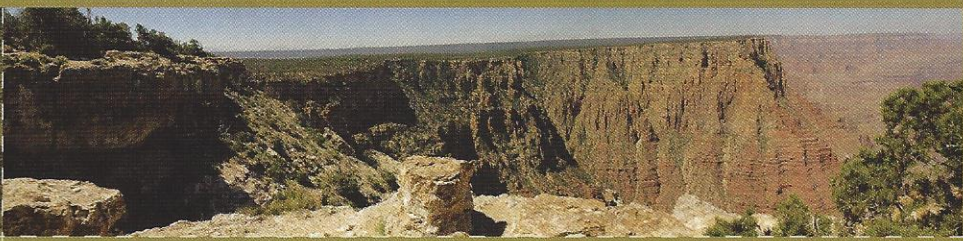


Flagstaff tent campers brings the comforts of home on the road. From features like the heated mattresses, metal drawer guides and fantastic fan, you can be sure quality built Flagstaff campers will be very enjoyable for years to come.

CLASSIC SERIES



The Classic series has much to offer the avid camper. Larger refrigerator, heated inner spring mattresses, torsion axle suspension, smooth fiberglass sidewalls and standard hot water with hot water package and outside shower are some of the features that make the Flagstaff Classic luxurious.



OUTSIDE SHOWER
(STD. ON CLASSICS)



HANGING SHIRT BAR
(STD. ON CLASSICS)



PORT-A-POTTY
(STD. IN SELECTED FLOORPLANS)



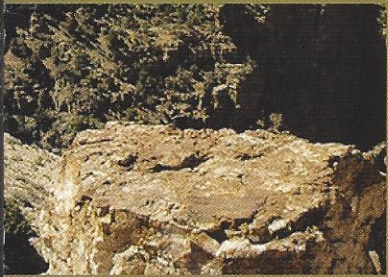
BUNK LIGHT & FAN
(STD. ON CLASSICS)

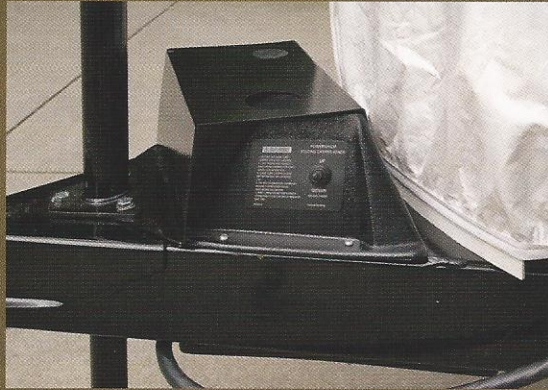


SLIDING STORAGE TRUNK



CRANK DOWN STABILIZER JACK WITH SAND PAD





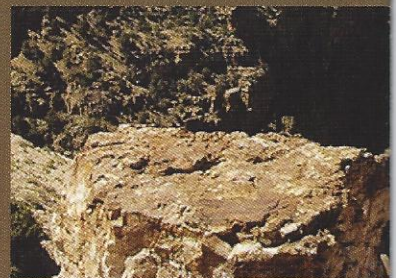
POWER LIFT WITH MANUAL OVERRIDE
(STD. ON HIGHWALL, OPT. ON
MACS AND CLASSICS)



SHOWER
(SOME MODELS)



STEREO



HIGHWALL SERIES



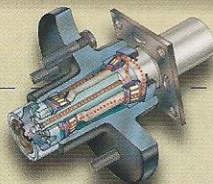
No more waiting in line for the showers. Take a morning shower in privacy without leaving your camper while breakfast is started. Our high wall models include a three burner range, microwave, stereo, and larger kitchen sink shower which brings travel trailers amenities to tent camping.

FLAGSTAFF CONSTRUCT



- | | |
|--|---|
| 1) 3 Stage Double Arm Lifter Posts | 9) Powder Coated Tubular Steel Frame |
| 2) Fiberglass Vacuum Bonded Radius Roof w/
No Center Seam | 10) Powder Coated Rafter Poles and Bed Bows |
| 3) 5-Piece Tenting with Breathable Bed Ends | 11) Air Conditioner Reinforcing Laminated
into Roof |
| 4) E-Z Crank Down Stabilizer Jacks w/ Sand Pads | 12) 13" Radial Tires on 12' Models (12" Radial
Tires on 8' & 10' Models) |
| 5) Full Perimeter Aluminum Bed Frames | 13) Easy lube axles |
| 6) Plywood Bunk Ends | 14) Breathable canvas bed end material |
| 7) 7-Way Pigtail Wiring | |
| 8) Under Floor 20 Gallon Fresh Water Tank (Ltd's
10 Gallon above floor) | |

ION



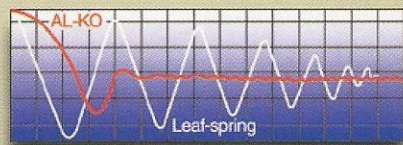
The UltrULube™ Hubs allow you to repack bearings quickly and easily without disassembly.

AL-KO® AXLES AND EASY LUBE HUBS

AL-KO Axles offer many advantages over conventional axles:

- Fully independent wheel suspension.
- No metal to metal contact and no springs, shackles, hangers, or U-bolts to break or wear out.
- Lower trailer center of gravity for improved stability.

Note: Torsion Axles on Classic's only. Easy-Lube Hubs on all units except LTD's.



POPULAR TENT FEATURES



SCREEN ROOM
(OPT.)



HANGING WARDROBE
(OPT.)



HANGING PANTRY
(OPT.)



OUTSIDE GRILL
WITH WORK TABLE
(EXCEPT LTDS.)



BIKE RACK
(OPT.)

HIGHWALL SERIES

STANDARDS & OPTIONS

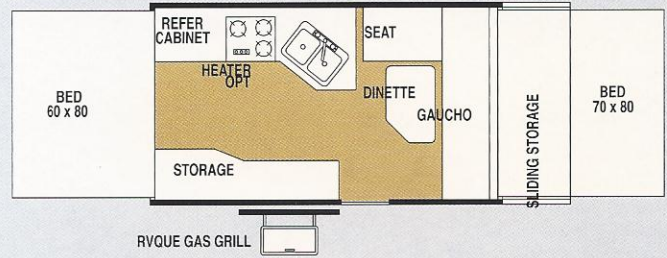
STANDARD FEATURES

- Double pan sink / with high rise faucet
- 14" tires with aluminum rims
- 3500 LBS torsion axels by AL-KO
- Easy-lube axles
- New exterior graphics
- Cream interior with wood look" linoleum
- AM/FM stereo with CD player
- TV outlet with cable and satellite hook up
- Three burner stove with oven
- Microwave
- Hot water package (incl. water filter, outside shower, DSI 6 gallon hot water heater, demand water pump)
- Outside shower
- Electric water pump
- Water purifier
- 2- 20 lb. gas bottles
- Diamond plated metal end caps
- Stainless steel appliances and sink
- 6 gallon gray water holding tank
- Laminated floor
- Bunk light with fan
- One-piece screen door
- Electric brakes
- Battery box and wiring kit
- 12v safety switch
- Power lift system
- Outside grill with work table

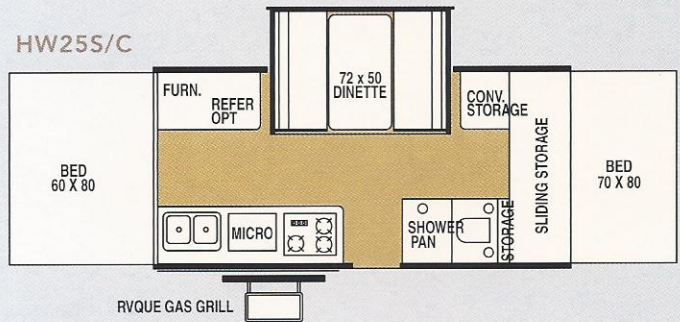
OPTIONS

- 13,500 BTU air conditioner
- Create-a-Breeze 3 speed Fantastic fan
- Heated innerspring mattresses
- 17,000 BTU forced air furnace w/electric ignition
- Screen room
- Awning
- Convenience package (incl. lined privacy curtain, roof valances, patio light, 110 exterior outlet)
- Travel package (incl. spare tire, tire bracket, tire cover, step)

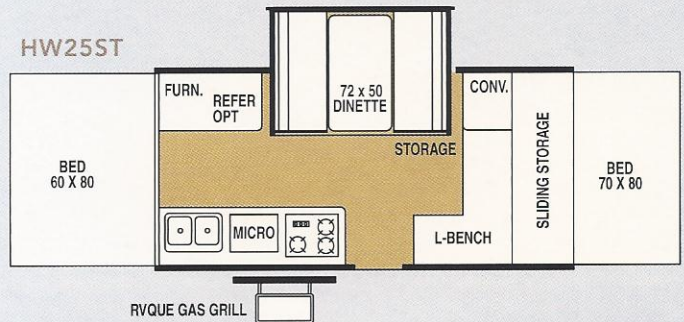
HW25CK



HW25S/C



HW25ST



MODEL	HW256G	HW258G	HW25CK
GVWR			
(Gross Vehicle Weight Rating)	3,947	3,917	3844
Base/Dry Unit Weight	2,803	2,853	2808
Base/Dry HitchWeight	447	417	393
Base/Dry Axle Weight	2,356	2,436	2665
Cargo Capacity	940	860	832
Box Size	12'	12'	12'
Trailer size (Closed - with hitch)	18'6"	18'6"	18'6"
Height (Closed)	68"	68"	68"
Trailer length (Open)	22'6"	22'6"	22'6"
Interior height	88"	88"	88"
Travel width	85"	85"	85"

Model number of any particular unit does not necessarily reflect the overall length of the unit itself. Dry weight are estimates.

CLASSIC SERIES

STANDARDS & OPTIONS

CLASSIC STANDARD FEATURES

- Residential Style Kitchen Faucet w/ Electric Water Pump
- Larger Deeper Sinks
- Soft Quilted Top Innerspring Mattresses
- Outdoor Gas Grill w/ Worktable
- Sliding Storage Tray on all Front Trunk Models (Except 524SS and 620ST)
- Water-Pur Filtration System
- E-Z Crank-down Stabilizer Jacks w/ Sand Pads
- Electric Brakes (12' models)
- Residential Style Raised Panel Doors
- 3 Double Ceiling Lights w/ Jacks for Accessories
- Bunk Light w/ Fan
- Large Lift Up Galley w/ Backsplash (most models)
- Permanently Mounted 3-Burner Indoor Range w/ Stove Cover
- Free Standing Table – High Pressure Laminate
- Comfortable Family Style Dinette w/ 4" Reversible Cushions
- Large Clothes Bar
- LP Leak Detector
- Drawer guides
- Port-a-Potty in 425D and 620 Models
- Hot Water Pkg. – Incl. Water Filter, Outside Shower, 6 Gallon Hot Water Heater, Demand Water Pump

CLASSIC CONSTRUCTION FEATURES

- Smooth Fiberglass Vacuum Bonded Exterior
- 3-Stage Double Arm Lifter Posts
- Fiberglass Vacuum Bonded Radius Roof w/ No Center Seam
- 1 Piece Screen Door
- 5 Piece Sectionalized Tenting with Breathable Bed Windows
- Under Floor 20 Gallon Fresh Water Tank
- Powder Coated Tubular Steel Frame
- One Piece Undercoated Structurewood Floor
- 13" Radial Tires (12" on 10' and 8' models)
- 7-Way Pigtail Plug
- Tent Permanently Attached on Bunk Ends and Slide Out
- Full Perimeter Aluminum Bed Frames
- Tinted Vinyl Windows
- Powder Coated Rafter Poles and Bed Bows
- Air Conditioner Reinforcing Laminated into Roof

CLASSIC POPULAR EXTRAS

- Thermostatically Controlled Heated Mattresses
- 17,000 BTU Forced Air Furnace w/ Electric ignition
- Extra-Large 2.5 Cubic Ft. Refrigerator
- A&E Free Standing Awning
- A&E Screen Room
- Convenience Pkg. (Incl. Lined Privacy Curtains, Roof Valances, Patio Light, 110 Exterior Outlet)
- Travel Pkg. (Incl. Spare Tire, Tire Bracket, Tire Cover, Step)
- Overhead Kitchen Pantry
- Hanging Wardrobe
- Power Lift System
- Bike Rack
- Air Conditioning Wiring Kit
- Electric Brakes (10' models)
- 13" Radial Tires (10' models)
- Dual 20 lb. LP Bottles

FLAGSTAFF CLASSIC SERIES

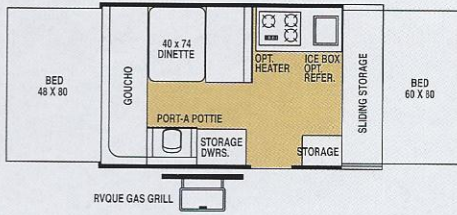
MODEL	620ST	720	523	822	625D	425D	823D	825D	524SS	823	923
GVWR (Gross VehicleWeight Rating)	2343	2355	3036	3011	3072	3071	3006	3070	3127	3006	3281
Base/Dry Unit Weight	1814	1730	2297	2283	2539	2605	2317	2447	2605	2225	2477
Base/Dry HitchWeight	243	255	316	291	352	351	281	350	407	286	281
Base/Dry Axle Weight	1571	1475	1981	1992	2187	2254	2038	2097	2198	1939	2196
Cargo Capacity	341	437	551	540	345	278	496	435	334	522	568
Box Size	10	10	12	12	12	12	12	12	12	12	12
Trailer size (Closed - with hitch)	15'5"	14	17'11"	17'11"	17'11"	17'11"	17'11"	17'11"	17'11"	17'11"	17'11"
Height (Closed)	57"	57"	61"	61"	61"	61"	61"	61"	61"	61"	61"
Trailer length (Open)	20'2"	20'2"	23'6"	23'6"	23'6"	23'6"	23'6"	23'6"	23'6"	23'6"	N/A
Interior height	6'6"	6'6"	6'6"	6'6"	6'6"	6'6"	6'6"	6'6"	6'6"	6'6"	6'6"
Travel width	85"	85"	85"	85"	85"	85"	85"	85"	85"	85"	85"
Tire Size - 13"R std.	12"	12"	STD.	STD.	STD.	STD.	STD.	STD.	STD.	STD.	STD.
Power converter with charger: amps	25	25	25	25	25	25	25	25	25	25	25

Model number of any particular unit does not necessarily reflect the overall length of the unit itself. Dry weight are estimates.

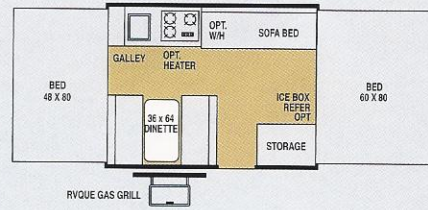
CLASSIC SERIES

FLOORPLANS

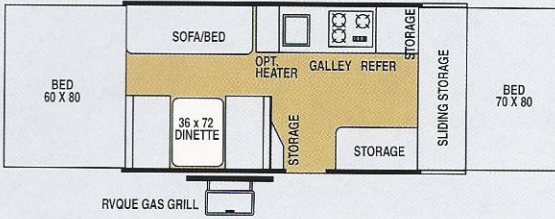
620ST



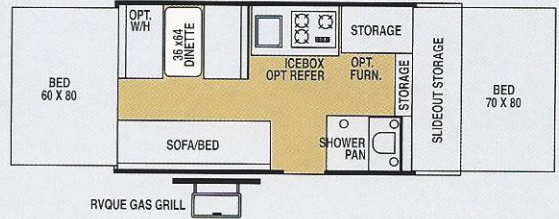
720



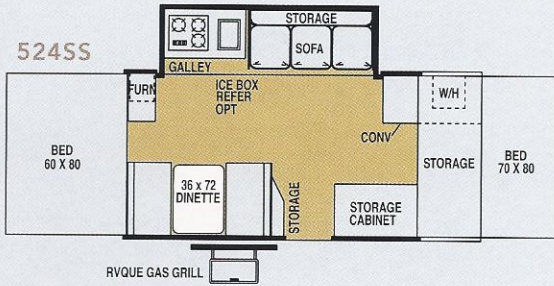
823



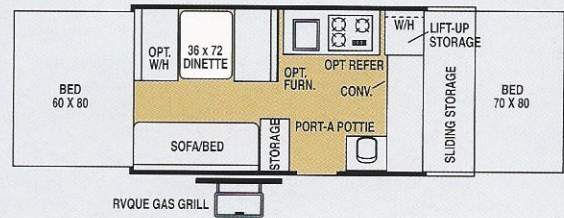
523



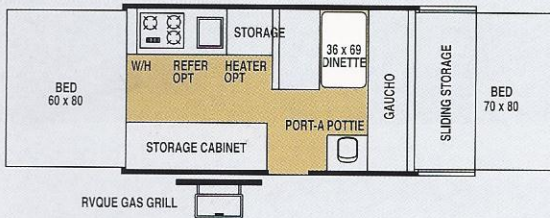
524SS



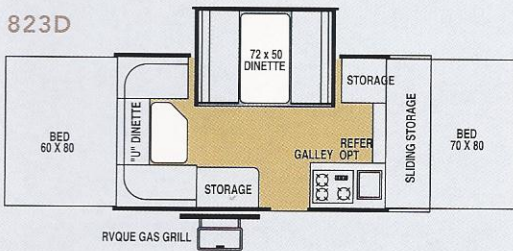
822



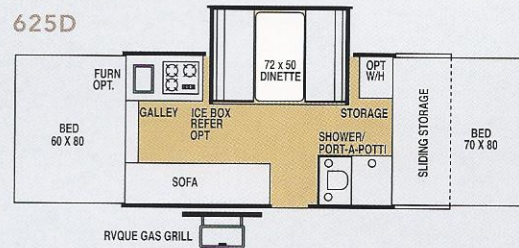
923



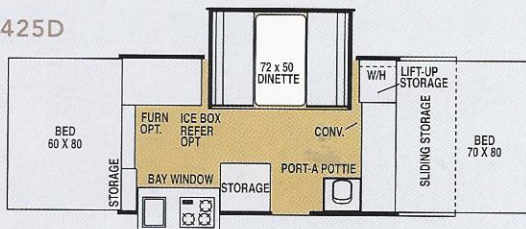
823D



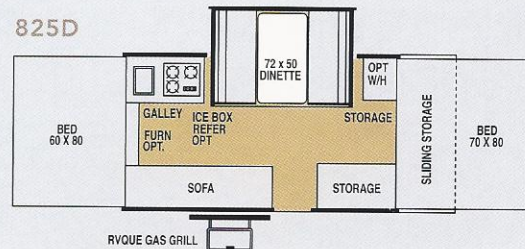
625D



425D



825D



MAC/LTD SERIES

STANDARDS & OPTIONS

MAC/LTD STANDARD FEATURES

- Residential Kitchen Faucet w/ Electric Water Pump
- Soft Quilted-Top Bed Mattresses (4" High Density Foam)
- Outside Gas Grill (Optional on LTD's)
- Water-Pur Filtration System w/ all Shower Models
- Permanently Mounted 3 Burner Indoor Range w/ Range Cover (except Ltd's)
- Converter w/ Built in Battery Charger
- Electric Brakes (12' models)
- Tinted Vinyl Windows
- Fold Over Galley with Upper and Lower Storage
- Exterior Work Table (except Ltd's)
- LP Leak Detector
- Automatic Safety Switch to Turn Off 12 Volt Current when Roof is Closed
- Large Built-In Icebox
- One Piece Screen Door (except Ltd's)
- Residential Drawer guides
- Port-a-Potty 206st and 229 models

MAC/LTD CONSTRUCTION FEATURES

- 3 Stage Double Arm Lifter Posts
- Fiberglass Vacuum Bonded Radius Roof w/ No Center Seam
- 5-Piece Tenting with Breathable Bed Ends
- E-Z Crank Down Stabilizer Jacks w/ Sand Pads
- Full Perimeter Aluminum Bed Frames
- Plywood Bunk Ends
- 7-Way Pigtail Wiring
- Under Floor 20 Gallon Fresh Water Tank (Ltd's 10 Gallon above floor)
- Powder Coated Tubular Steel Frame
- One Piece Undercoated Structurewood Floor
- Electric Brakes (12' Models)
- Powder Coated Rafter Poles and Bed Bows
- Air Conditioner Reinforcing Laminated into Roof
- 13" Radial Tires on 12' Models (12" Radial Tires on 8' & 10' Models)
- Leaf-spring Axle
- Main Door Operational in Closed Position
- 2,000 lb. Tongue Jack w/ Swivel Wheel
- Easy lube axles
- Seamless, High Density Polyethylene Wheel Wells
- Battery box and wiring kit

MAC POPULAR EXTRAS

- Create-A-Breeze 3 Speed Fantastic Fan
- Thermostatically Controlled Heated Bed Mattresses
- 17,000 BTU Forced Air Furnace w/ Electric Ignition
- Large 1.9 Cubic Ft. Refrigerator
- A&E Free Standing Awning
- Screen Room
- Convenience Pkg. (Incl. Lined Privacy Curtains, Roof Valances, Patio Light, 110 Exterior Outlet)
- Travel Pkg. (Incl. Spare Tire, Tire Bracket, Tire Cover, Step)

- Shower/Cassette Option (model 228 & 228D incl. Water Filtration System, 6 Gallon Hot Water Heater, Demand Water Pump, and Cassette Toilet)
- Overhead Kitchen Pantry
- Power Lift System
- Bike Rack
- Air Conditioner Wiring Kit
- Electric Brakes (standard on 12' models)
- Dual 20 Lb. LP Bottles

- Rear Crank Down Stabilizer Jacks w/ Sand Pads
- Outside Recep. (206 LTD only)
- Patio Light (206 LTD only)
- Step

LTD STANDARD FEATURES

- Spare Tire
- Awning
- Roof Vent
- Privacy Curtains

LTD POPULAR EXTRAS

- Thermostatically Controlled Heated Bed Mattresses
- Large 1.9 Cubic Ft. Refrigerator
- 17,000 BTU Forced Air Furnace w/ Electronic Ignition
- Screen Room
- Electric Brakes
- Outside Gas Grill

FLAGSTAFF MAC/LTD SERIES

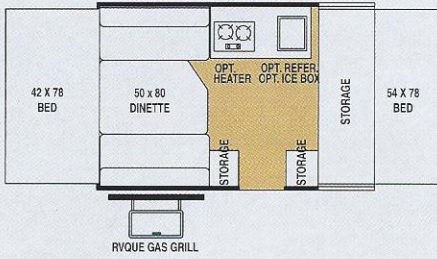
MODEL	176ST	176ED	206ST	205	208	226D	227	228	229	228D	176Ltd	206Ltd
GVWR (Gross Vehicle Weight Rating)	2287	2259	2341	2355	2319	3046	2989	2975	3111	3015	2278	2339
Base/Dry Unit Weight	1574	1336	1719	1635	1569	1620	1809	1845	2019	2079	1353	1486
Base/Dry Hitch Weight	187	159	241	255	219	326	269	255	391	295	178	239
Base/Dry Axle Weight	1387	1177	1478	1380	1350	1294	1540	1590	1628	1784	1175	1247
Cargo Capacity	525	735	434	532	562	1238	992	942	904	748	810	738
Box Size	8'	8'	10'	10'	10'	12'	12'	12'	12'	12'	8'	10'
Trailer size (Closed - with hitch)	14'	12'	15'11"	14'	14'	15'11"	15'11"	15'11"	16'6"	15'11"	12'	14'
Height (Closed)	57"	57"	57"	57"	57"	57"	57"	57"	57"	57"	57"	57"
Trailer length (Open)	17'	17'	20'2"	20'2"	20'2"	22'6"	22'6"	22'6"	22'6"	22'6"	17'	20'2"
Interior height	6'6"	6'6"	6'6"	6'6"	6'6"	6'6"	6'6"	6'6"	6'6"	6'6"	6'6"	6'6"
Travel width	85"	85"	85"	85"	85"	85"	85"	85"	85"	85"	85"	85"
Tire Size - 13"R std.	12"	12"	12"	12"	12"	std	std	std	std	std	12"	12"
Power converter with charger: amps	25	25	25	25	25	25	25	25	25	25	12	12

Model number of any particular unit does not necessarily reflect the overall length of the unit itself. Dry weight are estimates.

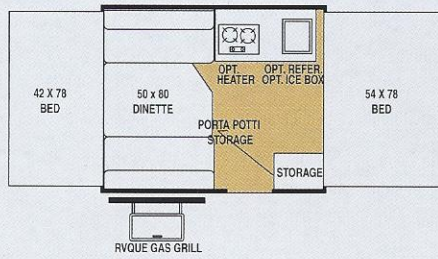
MAC / LTD SERIES

FLOORPLANS

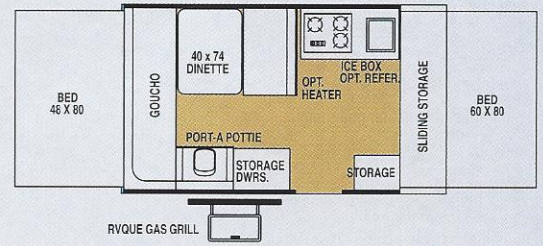
176ST



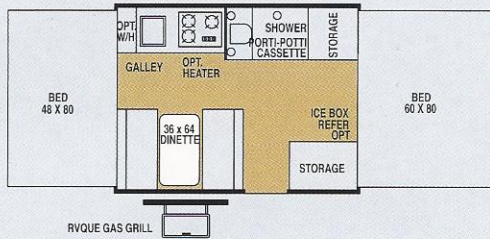
176ED



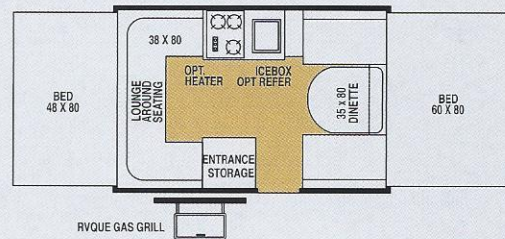
206ST



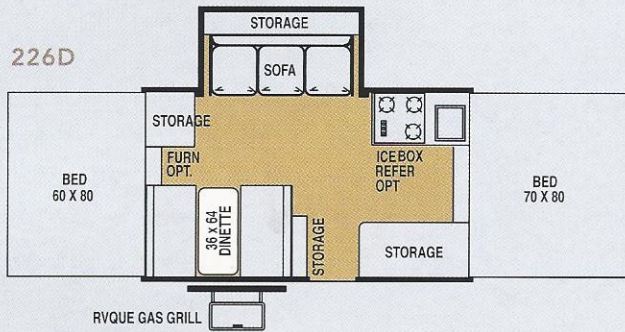
205



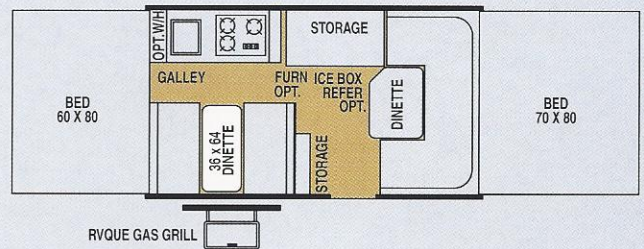
208



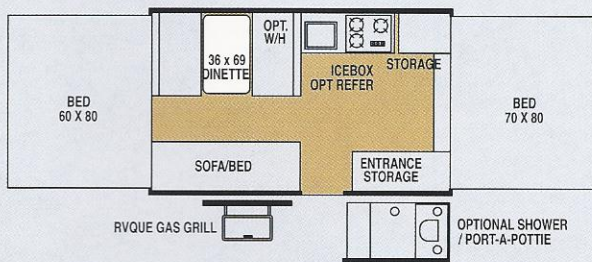
226D



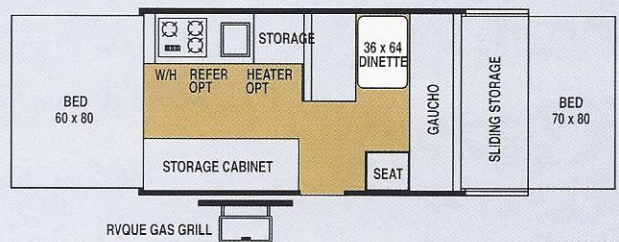
227



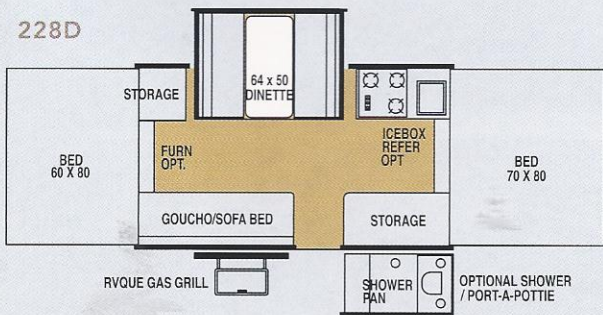
228



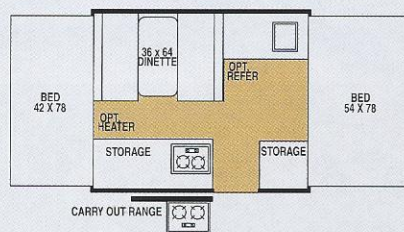
229



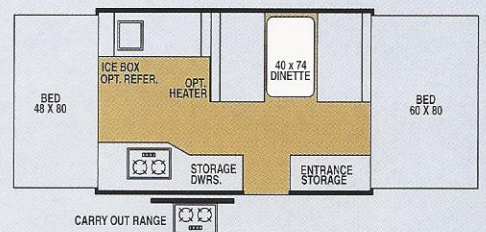
228D

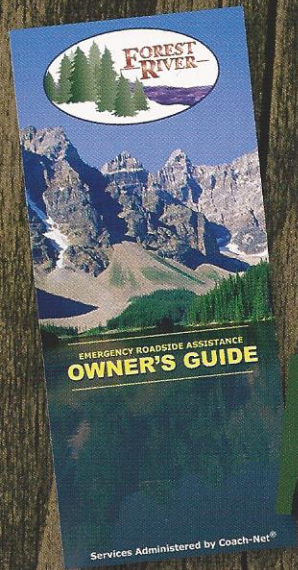


176 LTD



206 LTD





PEACE OF MIND.

Forest River has yet another exclusive feature to offer. One year of free roadside assistance will be given to every 2006 Flagstaff customer. This is just one more way to say "Thank you" and to ensure an enjoyable traveling experience.



YOUR FLAGSTAFF DEALER

For details on Flagstaff's complete warranty program, see your Flagstaff dealer. When it comes to backing products with the same quality and commitment it does when it begins the manufacturing process, the only name you have to remember when you're looking for a recreational vehicle is Flagstaff.

Flagstaff offers the following additional limited warranties to the original purchasers. Consult written warranty for details.

1. Five-year roof warranty, 2. Twenty-five-year floor warranty,
3. Five-year frame warranty, 4. Five-year tent warranty, 5. Five-year warranty on torsion axle suspension, 6. Limited life-time warranty of lifter system, 7. One-year bumper to bumper

Ask your dealer about the available lifetime structural warranty.

All specifications contained herein are based on the latest product information at time of printing. Forest River reserves the right to make changes in colors, materials, equipment and specifications at any time without notice and assumes no responsibility for any errors in this brochure.



Forest River, Inc. 55470 C.R. 1 Elkhart, IN 46515
574.389.4600 www.forestriverinc.com www.forestriveraccessories.com