

WELCOME TO FOREST RIVER'S

# FLAGSTAFF

FIFTH WHEELS & TRAVEL TRAILERS



**YOUR SUV & 1/2 TON  
SPECIALIST.**



**UNDER BED DRAWERS  
(SOME MODELS)**



**DIRECTIONAL  
READING LIGHT**



**DOORS & DRAWERS**

Residential hard wood doors and drawers are offered as a Flagstaff standard. Each door and matching drawer are constructed of a solid raised panel oak and each drawer is fitted with metal drawer guides for easy opening and closing.

# 26BHSS



Rich interiors. Beautiful furnishings. Flagstaff travel trailers are expected to meet and exceed expectations. We have done it again. Every appointment is met with the highest standards to make sure your camping experience is enjoyable.



**PASS THROUGH STORAGE**

# 831RLSS



The beautiful cream wood work (optional) sets the stage for clean upscale camping experience. The stainless steel range and refrigerator are met with congoeum flooring and carpet to bring the comforts of home on the road. The kitchen countertop extends into the living area providing a snack bar with bar stools for quick snacks.



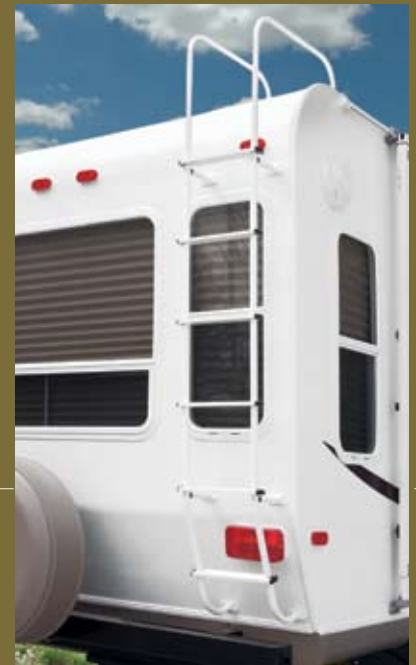
**GARDEN SHOWER**



**TOWEL BAR**



**EXTERIOR SHOWER**



**EXTERIOR REAR LADDER**





CEILING FAN



FLAT PANEL LCD TV



LAUNDRY CHUTE



85284 RLS

8 5 2 4 R L S



Flagstaff's classic super lite trailers and fifth wheels are taking the industry by storm. These trailers boast luxurious interiors with quality craftsmanship to make it one of the best values on the market today. Go ahead and look over Flagstaff's long list of standard features and see why Flagstaff is right for you.



# SUPER LITE 5TH WHEELS & TRAVEL TRAILERS

## STANDARDS & OPTIONS

### STANDARD FEATURES

- Aluminum Frame (floor, sidewall, & roof)
- Insulation factors R-7 side wall, R-12 Floor and R-14 ceiling
- Aluminum bed and dinette frames
- Laminated Filon Fiberglass Sidewalls
- Screwed and Glued Cabinetry
- Vinyl Roof
- Torsion Axle, Rubber-Ryde Suspension
- Electric Slide-Out
- Ducted Furnace
- Solid Wood Raised Panel Doors and Drawers
- Residential 1 Piece Sink Cover/Cutting Board
- Monitor Panel
- Decorative Frame Skirting
- Designer Valances w/ Lambrequin Arms
- Mini Blinds
- Tub Surround
- 3 Burner High Output Gas Range
- 6 Gallon "Quick Recovery" Water Heater
- Water Heater By-Pass Kit
- Outside Shower
- Phone Jack
- 2-20 Lb Gas Bottles
- Molded Bottle Cover
- Bathroom Skylight (most models)
- 55 Amp Converter with Charger
- Auto Gas/Electric Refrigerator
- Rear Stabilizer Jacks
- Residential Drawer guides
- Directional Reading Lights on Sofa Slides
- 14" Tires w/t Double Step
- Carbon Monoxide Detector (Standard Option)

### OPTIONAL FEATURES

- Create-A-Breeze 3 Speed Fantastic Vent (Standard Option)
- Heated Mattress (Standard Option)
- Water-Pur Filtration System (Standard Option)
- 13,500 BTU or 15,000 BTU Ducted Roof Air
- Double Door Refrigerator (21FB, 23LB, 23FB, 23FBS, 521RL, 523RB)
- Microwave
- Gas Oven
- TV Antenna w/ Cable & Satellite Hook-Up
- Digital AM/FM/CD w/ Remote
- Awning
- Outside Gas Grill and Worktable
- Front Stabilizer Jacks
- 110/ DSI Water Heater
- Raised Oak Refrigerator Panels
- Electronically Controlled Heated Holding Tanks
- Spare Tire Carrier & Cover
- Optional Second Door (some models)
- 13" or 19" TV w/ DVD and "True Stereo" Theater Sound
- LCD TV w/ DVD & 5.1 Digital Dolby Surround Sound (25D, 26RGS, 26RKS, 26BHSS, 27BH, 27BHSS)
- Day/Night Shades
- Aluminum Wheels
- Slide out toppers
- Cream interior option with stainless steel appliances
- Stainless steel appliances
- 1/2 sliding storage tray
- Theatre Surround Sound
- ★ Standard LCD Screen TV w/ DVD & 5.1 Digital Dolby Surround Sound with Subwoofer

### SUPER LITE TRAVEL TRAILERS

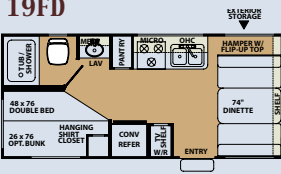
MODEL	19FD	21FB	23FB	23FBS	23LB	25BHS	25D	26BHSS	26RKS	26DS	26FS	26RLS	26RGS	26RBSS	27BH	27BHSS
Length	20'6"	21'8"	23'8"	23'8"	23'8"	27'1"	25'8"	29'3"	27'1"	27'1"	27'1"	29'3"	27'1"	29'3"	32'6"	32'6"
Width	90	90	90	90	90	90	90	90	90	90	90	90	90	90	90	90
Height w/t out AC	112	112	112	112	112	112	112	112	112	112	112	112	112	112	112	112
Interior Height	78	78	78	78	78	78	78	78	78	78	78	78	78	78	78	78
Hitch weight	118	315	397	388	203	336	370	392	393	449	510	479	301	503	347	437
Axle Weight	2803	2767	2881	3069	3207	3796	3206	3928	3706	3700	3759	4034	3727	4121	3923	4297
Unit Dry Weight	2921	3082	3278	3457	3410	4132	3576	4320	4094	4149	4269	4513	4028	4624	4270	4734
GVWR	4518	4715	4797	4788	4603	6367	6370	6392	6393	6449	6510	6524	6301	6554	6347	6437
Tire Size	14	14	14	14	14	14	14	14	14	14	14	14	14	14	14	14
Ducted Furnace	20K	20K	20K	20K	20K	20K	20K	30K	30K	30K	30K	30K	30K	30K	30K	30K
Refrigerator	S	S	S	S	S	D	D	D	D	D	D	D	D	D	D	D
Fresh water (gal)	31	31	31	31	31	31	31	31	31	31	31	31	31	31	31	31
Grey Water (gal)	25	25	25	25	25	25	25	25	25	25	25	25	25	25	25	25
Black Water (gal)	25	25	25	25	25	25	25	25	25	25	25	25	25	25	25	25
Converter w/Charger (amps.)	55	55	55	55	55	55	55	55	55	55	55	55	55	55	55	55

Refrigerator: S = Single, D = Double

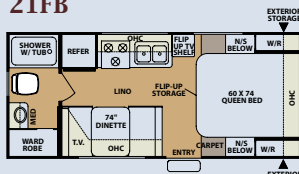
# SUPER LITE 5TH WHEELS & TRAVEL TRAILERS - FLOORPLANS

## TRAVEL TRAILERS

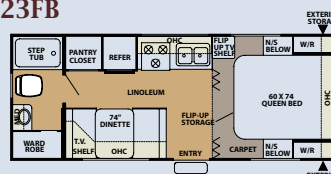
19FD



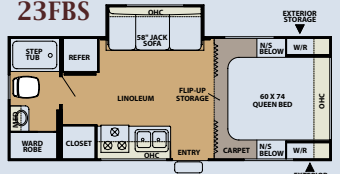
21FB



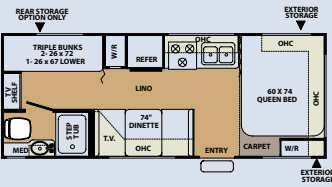
23FB



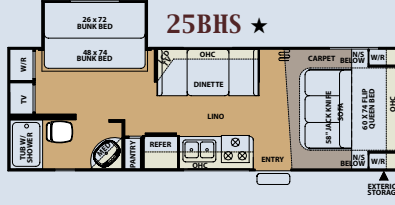
23FBS



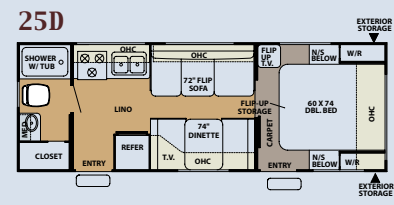
23LB



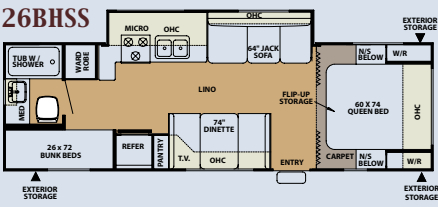
25BHS ★



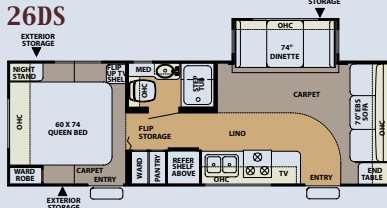
25D



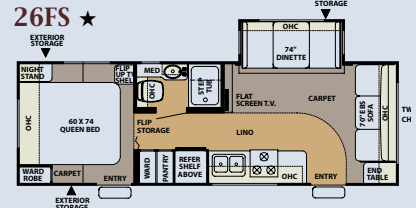
26BHSS



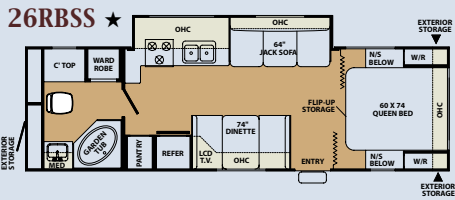
26DS



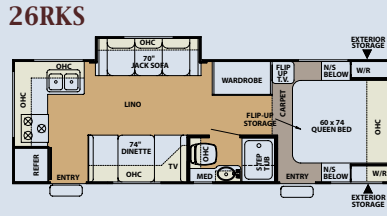
26FS ★



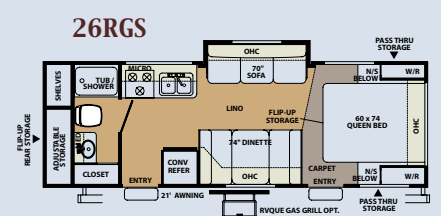
26RBSS ★



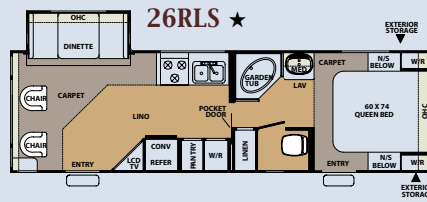
26RKS



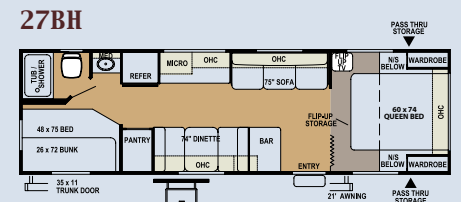
26RGS



26RLS ★



27BH

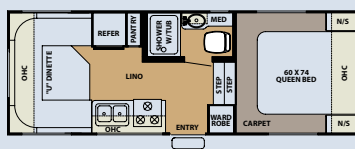


## FIFTH WHEELS

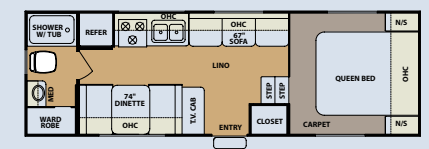
MODEL	521RL	523RB
Length	22'4"	24'4"
Exterior Width	90"	90"
Exterior Height w/o AC	121"	121"
Hitch Weight	749	746
Axle Weight	2991	3360
Unit Dry Weight	3740	4106
GVWR	5149	5146
Tire Size	14"	14"
Ducted Furnace	20k	20k
Single Door Refer	STD.	STD.
Double Door Refer	N/A	OPT.
Fresh Water Cap. (gal)	31	31
Grey Water Cap. (gal.)	25	25
Black Water Cap. (gal.)	25	25
Converter w/Charger (amps)	55	55

## FIFTH WHEELS

521RL



523RB



# CLASSIC SUPERLITE 5TH WHEELS & TRAVEL TRAILERS STANDARDS & OPTIONS

## TRAVEL TRAILER & FIFTH WHEEL STANDARD FEATURES (IN ADDITION TO THE SUPER LITE FEATURES)

- Enclosed Sectionalized Underbelly
- Electronically Heated Holding Tanks
- DSI Hot Water Heater
- Gas Oven
- 2-30lb Gas Bottles
- Second Entrance Door (where available)
- Front and Rear Stabilizer Jacks w/ Sand Pads (trailers only)
- Folding Grab Handle

## TRAVEL TRAILER & FIFTH WHEEL OPTIONAL FEATURES (IN ADDITION TO THE SUPER LITE FEATURES)

- Power Front Jacks (fifth wheels)
- Rear Stabilizer Jacks (fifth wheels)
- Hide-A-Bed (where available)
- Gas/Electric Water Heater
- Swivel Chair (where available)
- Free Standing Table and Chairs
- Ceiling fans (fifth wheels)
- Slide out toppers
- Exterior Ladder
- Atrium Slide
- Counter Top Extension

## CLASSIC SUPER LITE TRAVEL TRAILERS

MODEL	827FLS	829RGSS	829BHSS	831RLSS	831FKSS	831BHSS	831QBSS	829FKSS
Length	28'10"	31'6"	31'6"	33'	33'	33'	33'	31'6"
Width	96	96	96	96	96	96	96	96
Height without A/C	112	117	112	117	117	117	117	117
Interior Height	78	78	78	78	78	78	78	78
Hitch weight	606	516	432	543	850	677	1008	703
Axle Weight	4071	5093	4356	5428	4997	5414	4913	4284
Unit Dry Weight	4677	5609	4788	5971	5847	6091	5921	4978
GVWR	7606	7524	7432	7543	7850	7677	8008	7703
Tire Size	15	15	15	15	15	15	15	15
Ducted Furnace	30K	30K	30K	30K	30K	30K	30K	30K
Fresh water capacity (gal)	36	36	36	36	36	36	36	36
Grey Water capacity (gal)	30	30	30	60	60	60	30	60
Black Water Capacity (gal)	30	30	30	30	30	30	30	30
Converter w/t Charger (amps.)	55	55	55	55	55	55	55	55

Model number of any particular unit does not necessarily reflect the overall length of the unit itself. Dry weight are estimates.

## CLASSIC SUPER LITE FIFTH WHEELS

MODEL	8524RKSS	8524BHSS	8524CBS	8524RLS	8528CKSS	8528RKSS	8528BHSS	8528GTSS	8528DS	8528RLSS
Length	26'1"	26'1"	26'1"	26'1"	30'6"	30'6"	30'	30'	30'	30'
Width	96	96	96	96	96	96	96	96	96	96
Height w/t out AC	135	135	135	135	135	135	135	135	135	135
Hitch weight	1294	931	1150	1020	1461	898	1089	1081	1418	987
Axle Weight	4346	4558	4591	4852	5471	5468	5415	5106	5331	5361
Unit Dry Weight	5640	5489	5741	5872	6932	6366	6504	6187	6749	6348
GVWR	8294	7931	8150	8020	8461	7898	8089	8081	8418	7987
Tire Size	15	15	15	15	15	15	15	15	15	15
Ducted Furnace	30K	30K	30K	30K	30K	30K	30K	30K	30K	30K
Fresh water capacity	36	36	36	36	36	36	36	36	36	36
Grey Water capacity	60	30	60	30	60	60	60	30	60	30
Black Water Capacity	30	30	30	30	30	30	30	30	30	30
Converter w/t Charger	55	55	55	55	55	55	55	55	55	55

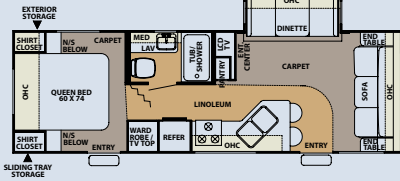
Model number of any particular unit does not necessarily reflect the overall length of the unit itself. Dry weight are estimates.

# CLASSIC SUPERLITE 5TH WHEELS & TRAVEL TRAILERS

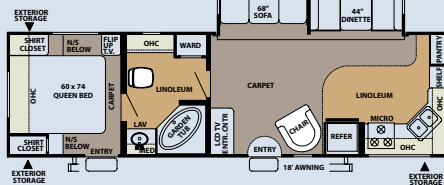
## FLOORPLANS

### TRAVEL TRAILERS

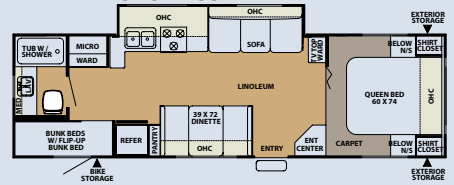
**827FLS** ★



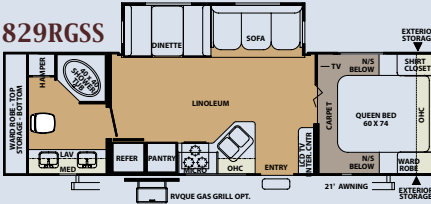
**829FKSS** ★



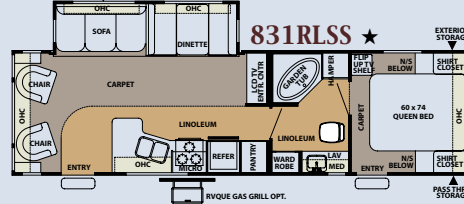
**829BHSS**



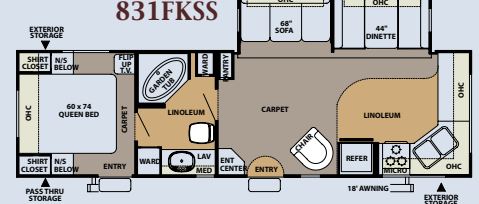
**829RGSS**



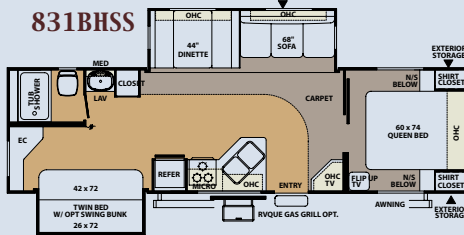
**831RLSS** ★



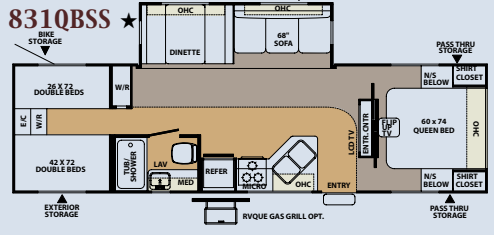
**831FKSS**



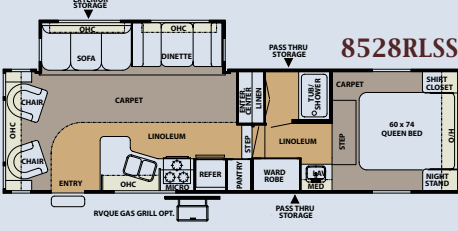
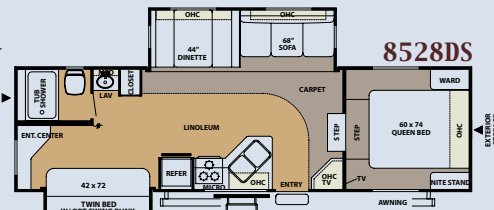
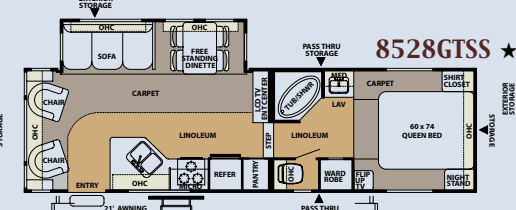
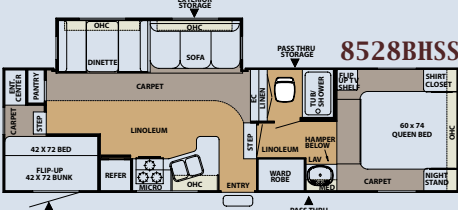
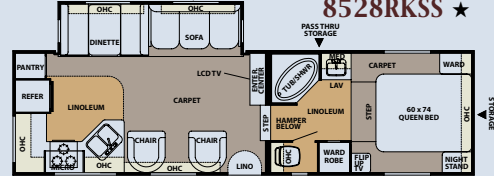
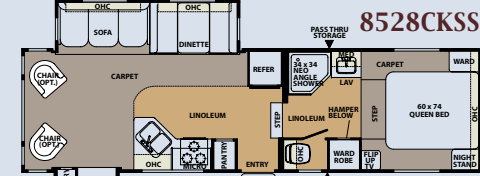
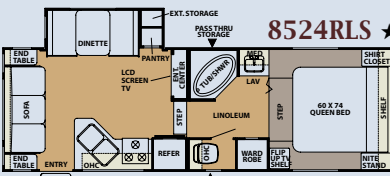
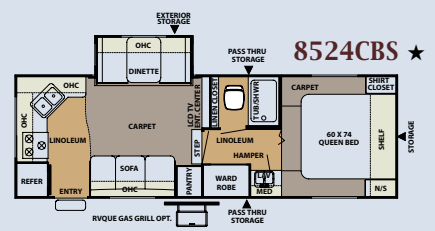
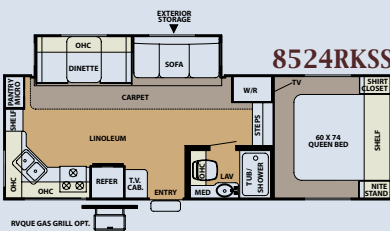
**831BHSS**



**831QBSS** ★



### FIFTH WHEELS





## PEACE OF MIND.

Forest River has yet another exclusive feature to offer: One year of free roadside assistance will be given to every 2006 Flagstaff customer. This is just one more way to say "Thank you" and to ensure an enjoyable traveling experience.

### YOUR FLAGSTAFF DEALER

For details on Flagstaff's complete warranty program, see your Flagstaff dealer. When it comes to backing products with the same quality and commitment it does when it begins the manufacturing process, the only name you have to remember when you're looking for a recreational vehicle is Flagstaff.

Flagstaff offers the following additional limited warranties to the original purchasers. Consult written warranty for details.

1. Twelve-year vinyl roof warranty,
2. Two-year fiberglass warranty,
3. Five-year axle warranty,
4. One-year bumper to bumper warranty,
5. Available second-year warranty

All specifications contained herein are based on the latest product information at time of printing. Forest River reserves the right to make changes in colors, materials, equipment and specifications at any time without notice and assumes no responsibility for any errors in this brochure.



Forest River, Inc. 55470 C.R. 1 Elkhart, IN 46515

574.389.4600 [www.forestriverinc.com](http://www.forestriverinc.com) [www.forestriveraccessories.com](http://www.forestriveraccessories.com)