

EVEREST

'06



ABSOLUTE LUXURY ON THE ROAD TO ADVENTURE





Whether dining alone or serving dinner guests, the free-standing dinette table adds to your dining pleasure. It features two expandable leaves, four high back dining chairs, and a sliding table top that reveals hidden storage space underneath.



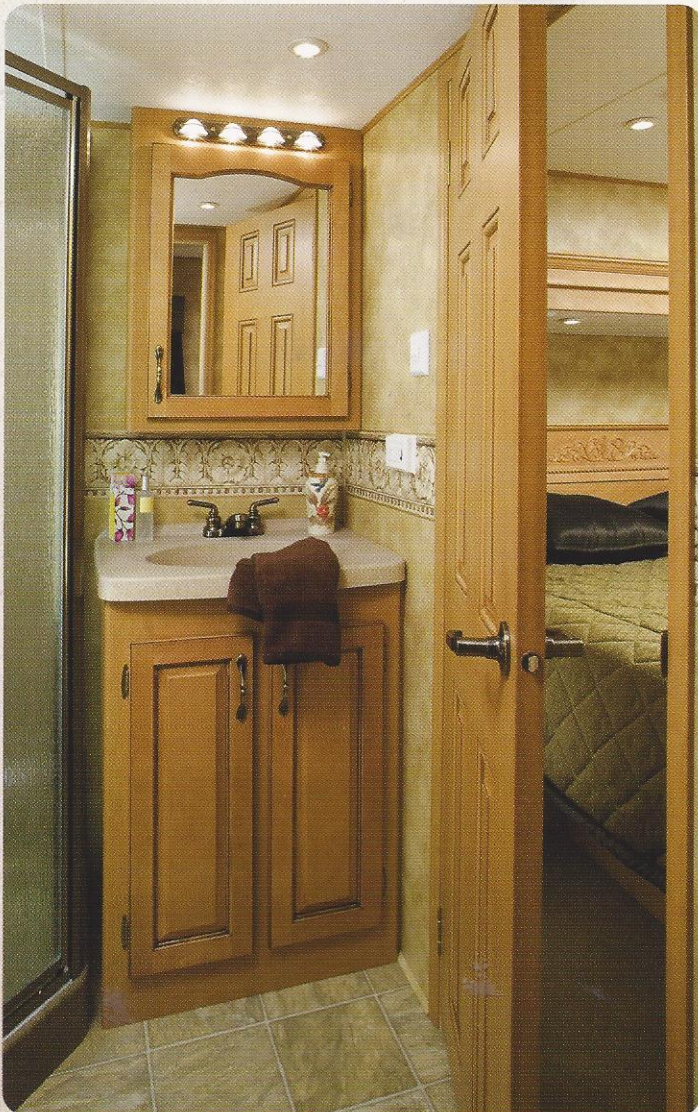
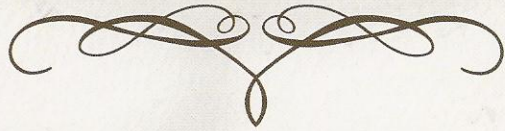
The living room is beautifully appointed with the amenities of a fine home such as deluxe Hide-A-Bed sofa and an entertainment center that houses a 27-inch flat screen TV, AM/FM/CD stereo, DVD player, and five speaker surround sound.



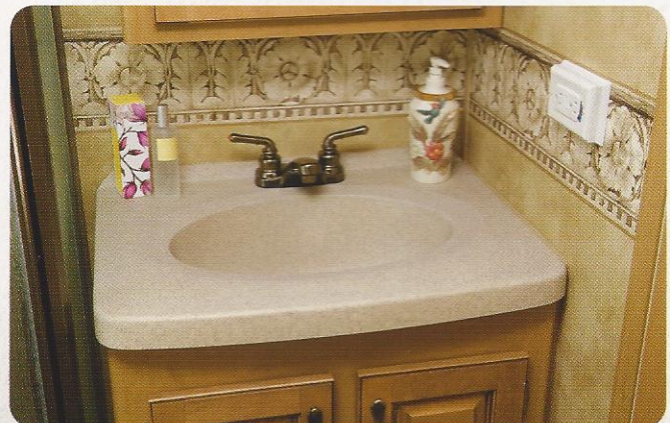


Everest makes a statement from the moment you walk in the door. Surrounded by elegant hand crafted maple, there is a feeling of distinction. You realize that you are not just in another fifth wheel, but rather the pinnacle of luxury that can only be Everest. Gorgeous solid surface countertops with antique brass faucets are standard fare. The beautifully designed rounded cabinet provides more walking room and swings open to reveal hidden storage. A unique breakfast bar with a lift-up table rounds out this spectacular kitchen.

WHERE SPACIOUS LIVING MEETS BEAUTY



Easy living has been carefully designed into every model. This bathroom can be accessed from both the hallway and the bedroom for privacy and convenience. The solid surface lavatory has a molded sink and is accompanied by a large mirrored medicine cabinet, vanity lights, and decorative border.

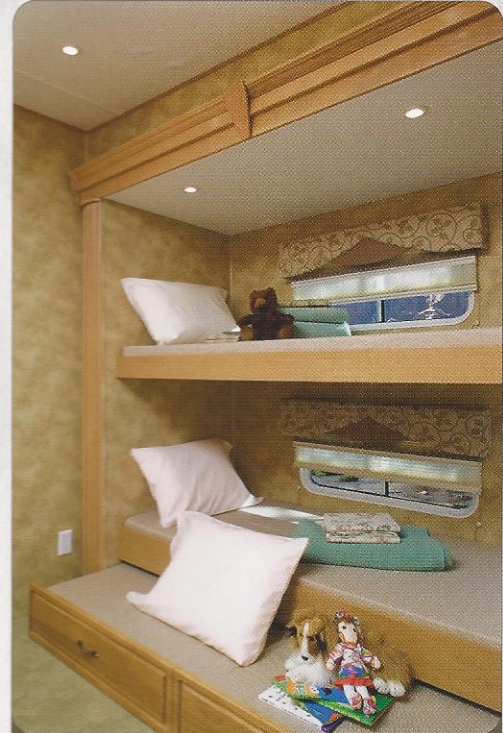




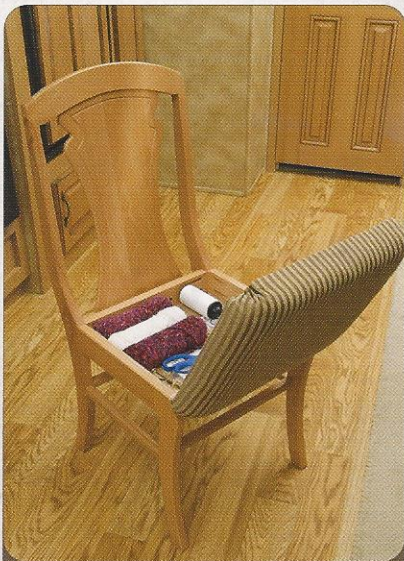
The Everest bedroom is spacious and beautiful with everything you need for restful comfort. The residential furnishings are just like home with the bedroom and bath area on a single level. Spacious wardrobes, closets, and drawers provide lots of storage room without sacrificing floor space. Many models even include a king size bed with innerspring mattress and sturdy headboard. A bedside shelf adds convenience with a built-in tissue holder and special place to store your keys.



A large wardrobe cabinet in this rear bunk bedroom model yields a tremendous amount of storage space and even includes an entertainment center that houses a 27-inch TV.



Bunk beds with an additional trundle bed underneath provide comfortable sleeping space for kids.



Even the dinette chairs have added storage space built into the seats.

NO DETAIL HAS BEEN MISSED



Careful attention to details is what makes the Everest difference. Nothing has been overlooked in our quest to create the perfect travel home.



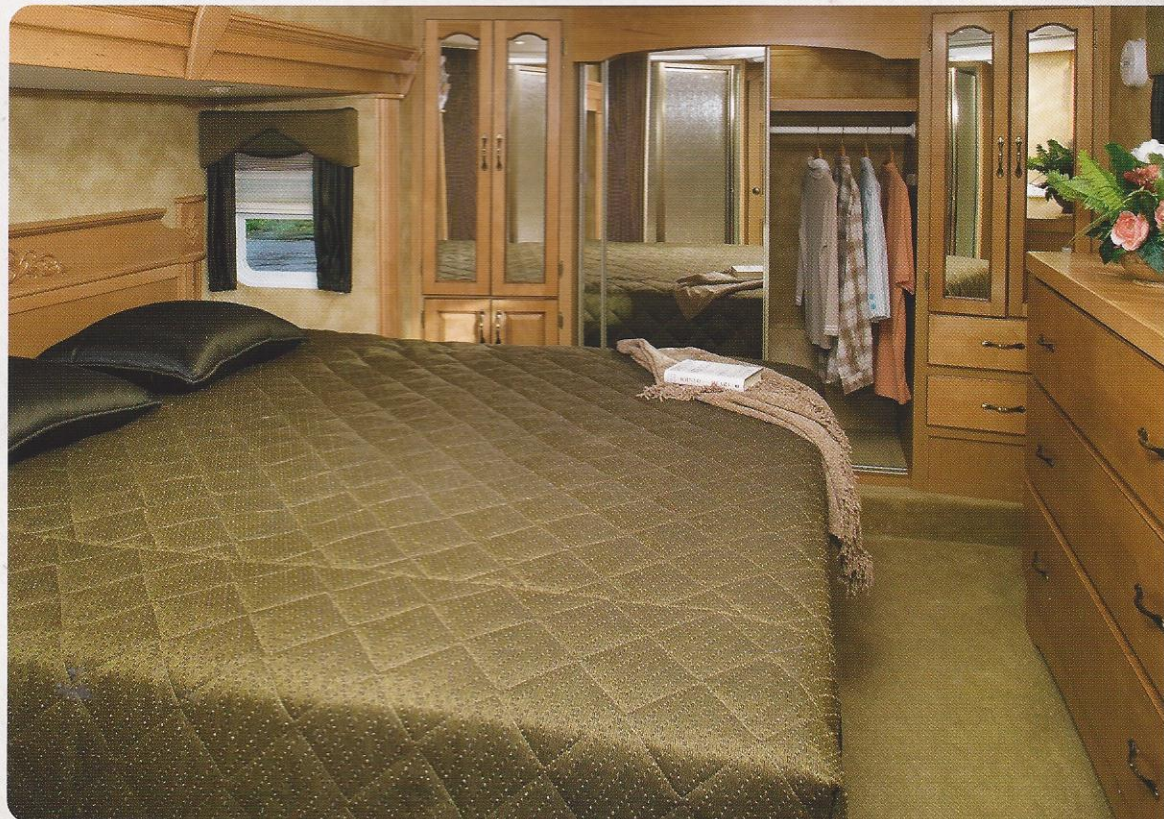
The residential Endura™ cabinet doors carry a 10-year warranty to ensure the very best in quality.



The solid surface counter tops with molded sink and sink covers provide a large continuous work area.



Spacious living quarters are created with generous slide-outs that boast a full 6'4" of headroom. Two, three, and four slide-out models are available, each one loaded with innovative features and beautifully appointed. Glazed maple cabinetry throughout the interior not only provides rich beauty, but also lots of storage space. Cabinets are pre-drilled and screwed with quality lumbercor styles, and drawers have heavy-duty residential ball bearing drawer guides to ensure trouble-free operation.



EVEREST 344J



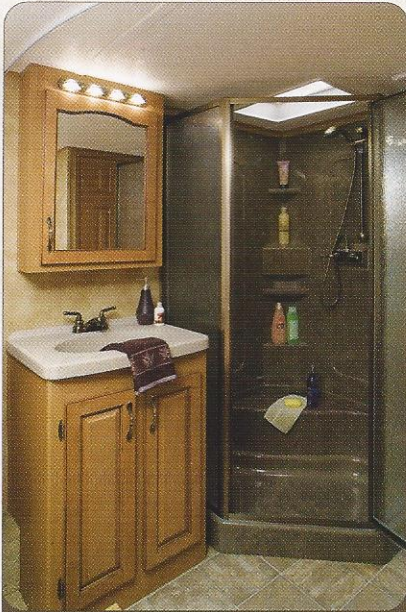
The Everest kitchen is a sight to behold. Whether lingering over a cup of morning coffee or serving family meals, you'll enjoy the many special touches that have been added such as the high rise kitchen faucet, large double door refrigerator, space-saving microwave, and the flush mounted three-burn range with 22-inch oven. We've even included a spice rack and message center.

EVEREST 366i



Numerous kitchen configurations are available to fit your family's needs and lifestyle. This roomy island kitchen features double slide-outs, island work area/breakfast bar, double slide-out pantries, ceiling fan, wood-style floor, and an inviting archway offset with recessed lighting. Of course, all Everest kitchens have residential-style, name brand appliances and abundant cabinet space.






The marble-look shower surround and hand-held massaging shower head add elegance and luxury.



Numerous floor plans and a choice of three professionally designed decors, along with a variety of options, let you personalize your Everest to reflect your individual style and needs.

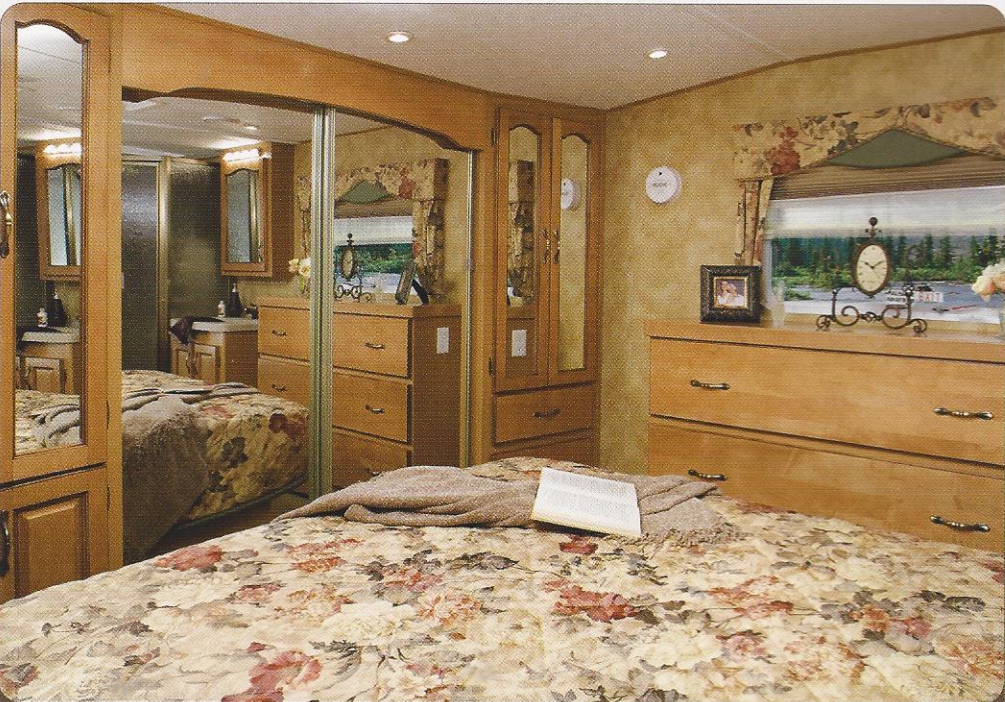
Fabric Samples



Sierra Faun

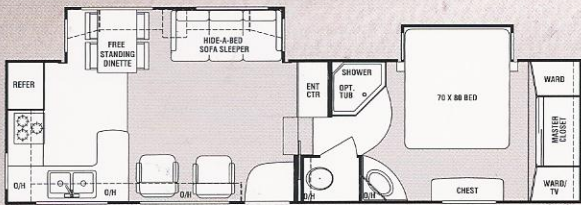
Cambridge Bay

Mocha Mist

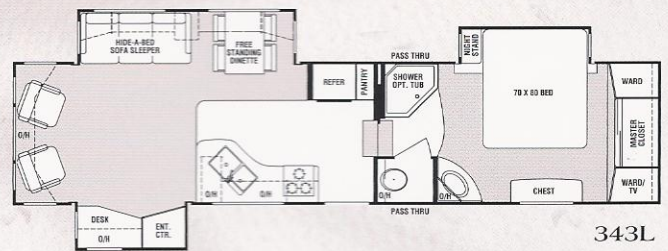


All bedrooms are equipped with a large master closet with mirrored sliding doors, side wardrobes, and large residential chest of drawers.

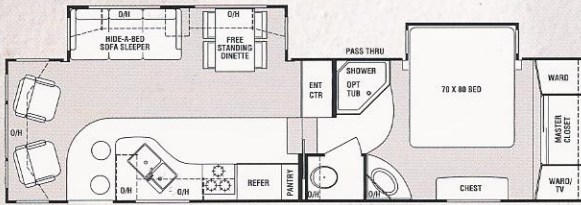
Floorplans



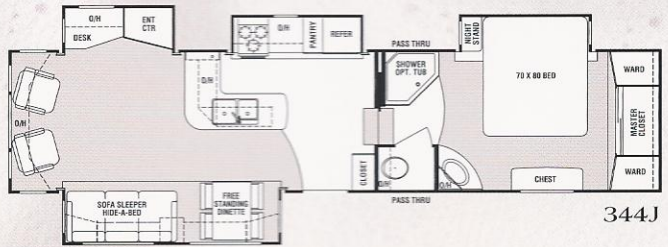
293P



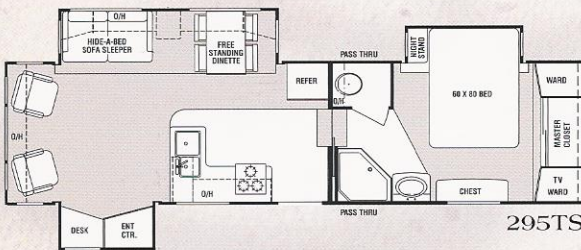
343L



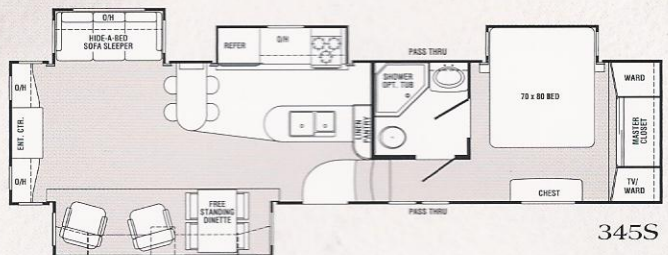
294L



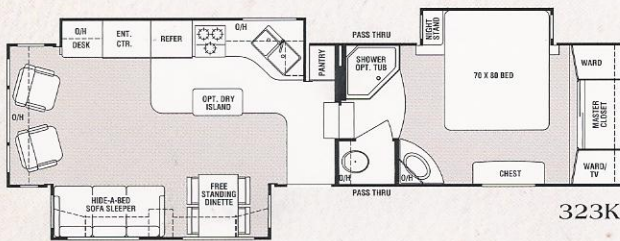
344J



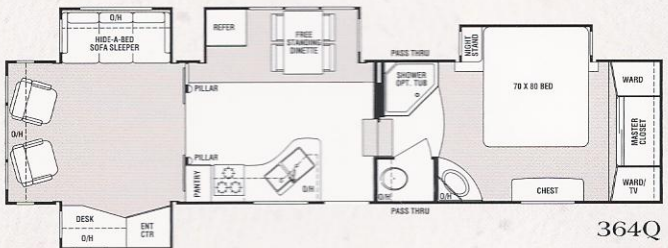
295TS



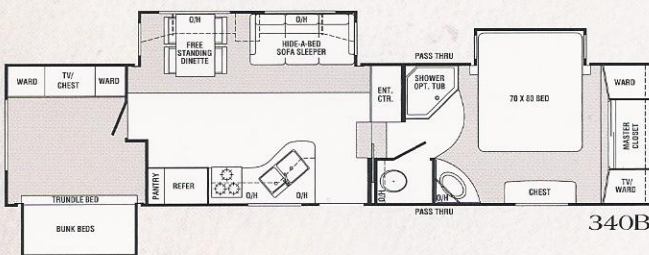
345S



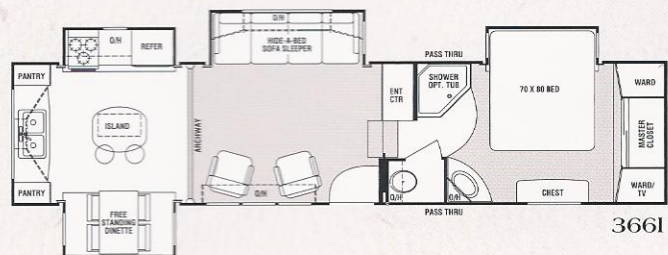
323K



364Q



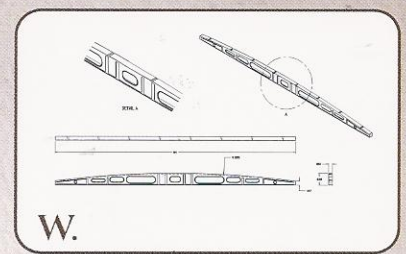
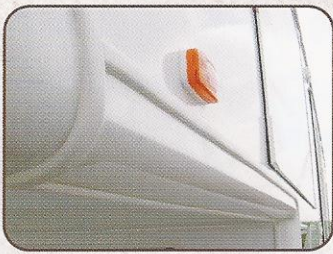
340B



366I

Model	293P	294L	295TS	323K	340B	343L	344J	345S	364Q	366I
GVWR	12700	12480	12480	14140	14000	14110	14075	—	14305	14255
UVW*	9620	9665	9810	10645	10500	10900	11520	—	11725	11235
CCC**	3080	2815	2670	3495	3500	3210	2555	0	2580	3020
Hitch Weight	2555	2270	1695	2135	2080	2110	2075	—	2305	2255
Ext. Length	32'10"	32'10"	33'	34'11"	36'11"	36'11"	37'11"	37'	37'11"	37'11"
Ext. Width	8'	8'	8'	8'	8'	8'	8'	8'	8'	8'
Ext. Height***	12'8"	12'8"	12'8"	12'8"	12'8"	12'8"	12'8"	12'8"	12'8"	12'8"
Fresh Water (gal)	54	54	54	54	54	54	54	54	54	54
Waste Water (gal)	39	39	39	39	39	39	39	39	39	39
Grey Water (gal)	77	77	77	39	77	77	54	77	54	54
Tire Size	LT235 85R16E	LT235 85R16E	LT235 85R16E	LT235 85R16E	LT235 85R16E	LT235 85R16E	LT235 85R16E	LT235 85R16E	LT235 85R16E	LT235 85R16E

*Unloaded Vehicle Weight **Cargo Carrying Capacity ***top of A/C †Extended hitch pin adds 9"



The one-piece, high-gloss gooseneck corner wrap protects your Everest during travel - a highly functional aerodynamic design detail that also beautifies your exterior.

16" tires and easy-to-lube Dexter™ axles are a standard in the Everest fifth wheel line.

The one-piece fluted polypropylene completely enclosed, double-insulated and heated subfloor.

Uni-Rafter™ Stamped Steel, Tapered Roof Rafters



EE. No-Sweat Vent System™ Attic vent dramatically reduces the potential for moisture to accumulate in the roof.



Everest's engineers are committed to you, the customer. Every layer, every support, every building material has been researched and then chosen with expert knowledge by RV industry veterans to give our customers structurally sound, easy-to-tow fifth wheel that we ourselves would be proud to own. Shown here are some of the key components of our quality-conscious construction story.



Sidewalls

- A. One Piece High-Gloss Fiberglass Gooseneck Corner Wraps
- B. Gel-Coated Filon Fiberglass (High-Gloss Fiberglass Optional)
- C. 1/8" Lauan Wood Backer
- D. Second Layer 1/8" Lauan Wood Backer w/ Staggered Seams
- E. Solid Block (EPS - Expanded Polystyrene) Insulation
- F. Radius Window Corner Blocks
- G. Metal Backing Strips (EGS-Electro-Galvanized Sheet)
- H. 2" Welded Aluminum Sidewall Studs

Insulation Factors

- Walls - R-9
- Roof - R-15*
- Floor - R-29*

*Insulation values are calculated utilizing the Optional Double Insulation Package

Tires and Chassis

- BB. Shock Absorbers on Each Wheel
 - CC. Large 16" E Rated Tires
 - DD. Easy-to-Lube Axles
- ### Floor
- I. 27 Ounce Residential - Grade Sculpted Carpet with Teflon Stain Protection
 - J. Carpet Padding
 - K. 5/8" Seamless Wood Floor Decking with 25-Year Warranty
 - L. Fiberglass Batten Insulation (Double Insulation Optional)
 - M. 3" Welded Aluminum Floor Joists on 12"- 16" Centers
 - N. Darco Wrap (Main Floor)
 - O. 10" Steel "Powder Coated" I-Beam Frame
 - P. Fiberglass Batten Insulation
 - Q. Astro-Foil (Bubble Pack) Insulation
 - R. One-Piece (Seamless) Fluted Polypropylene Fully Enclosed Sub-Floor

Caps

- S. Molded High-Glass Fiberglass Front and Rear Caps
- T. Fiberglass Batten Insulation
- U. 2" Welded Aluminum Front and Rear Cap Studs

Roof

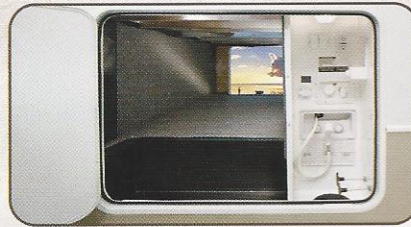
- V. 1/8" Ceiling Decking with Interior Vinyl Ceiling
- W. Uni-Rafter™ Stamped Steel, Tapered Roof Rafters (See Illustration W.)
- X. Fiberglass Batten Insulation (Double Insulation Optional)
- Y. 3/8" Weyerhaeuser Structure Wood Roof Decking with 25-Year Warranty
- Z. Aluminum Radius Roof Corner Molding Wrap
- AA. One-Piece (seamless) EPDM Rubber Roof with 12-Year Warranty
- EE. No-Sweat Vent System™



The handy slide-out pantry holds lots of groceries without taking up valuable space.

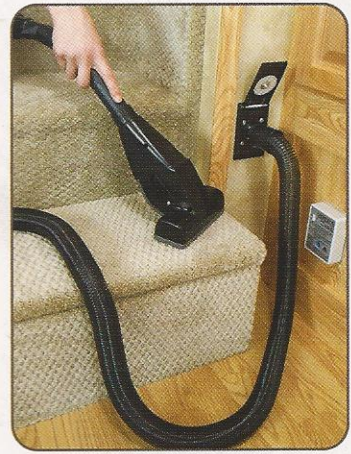


All models contain a front utility storage compartment complete with racks, bins, and hanging hooks.



The huge Stow-Away exterior storage compartment is fully finished and also houses the all-in-one "Waterworks" utility center.

The central vacuum system features inside and outside access plug-ins and stores in the underbelly compartment.



Standard Features



Exterior Features

- Tested to 0 degree's (must order heat strip option) • No-Sweat Vent System™ • A&E™ patio awning • All in 1 "Waterworks" exterior utility center • Exterior shower • Stow-Away storage-multi-functional exterior storage system • Hydraulic selector valves for slide-outs • Hydraulic pump override • Dynamic exterior graphics • Alumi-Core (Aluminum super-structure in walls and floor) • Uni-Rafters™ (stamped steel roof rafters) • Hi-gloss fiberglass front and rear caps • Hi-gloss fiberglass gooseneck corner caps • Smooth gel-coat Filon™ fiberglass exterior • Easy glider flush floor slide room • Reverse (back-up) lights • Water heater by-pass • White clamp-ring Hehr™ windows • Easy open triple steps • Entrance door: 6'4" high and 30" wide stabilizer jacks • Snap-Jacks (easy to use front landing jack pins) • Dexter™ easy lube axles • Gutters with rain spouts • 15,000 BTU AC and 35,000 BTU furnace with universal remote control • Rear ladder • Power front landing jacks • No fuss flush, black tank flush system • 50 amp service with detachable power cord • 16" tires and 6000 lb. 8 lug axles • Thermashield™ holding tank enclosure • 1 piece seamless polypropylene underbelly • 12 gallon gas/elec. water heater with DSI • Tinted (80%) safety glass windows • Folding entry handle

Interior Features

- Glazed maple cabinetry • Solid maple slide-fascia's • Solid surface countertops with molded sinks (kitchen and bath) • Functional cabinet end with message center and spice rack (n/a in all models) • Cross ventilation in all bed slides • Residential style headboard • Residential style chest of drawers in bedroom • Heavy duty residential ball-bearing drawer guides • 18" deep drawers where applicable • 6 panel pocket door leading into master suite • 5 speaker surround sound with AM/FM stereo, CD and DVD player • Pre-drilled screwed maple cabinetry with lumbercor styles (no staples or paperboard) • Endura™ residential raised panel cabinet doors (10 year warranty) • Free standing dinette table with 2 expandable leaves and sliding tabletop with storage. • 4 high back dinette chairs with storage seats • High rise kitchen faucet • Large double door refrigerator • 6 panel refrigerator front • Space maker microwave oven • Skylight over shower

- 38" garden shower, marble look shower surround, molded seat, translucent glass shower door and surround, residential handheld massaging shower head • Porcelain foot flush toilet with sprayer • Residential king size bed (70x80) (N/A on 295T) • Innerspring mattress • Quilted bedspread and pillows • Deluxe Hide-A-Bed sofa • Floor ducted heat with residential heat plenum in bedroom • TV antenna with built-in amplifier • Day/Night shades • LP leak detector • 3 burner range with 22" oven • Oven flush-mounted with solid surface countertop • Monitor panel • Charcoal filtered power range hood • Cable and satellite ready TV hook up • Telephone jack • Ceiling fan with lights • 1 level master bedroom suite (no step from bath to bed) (N/A on 345S) • Create-A-Breeze roof vent in living area with push button operation

Options



- 27" flat screen TV • Fireplace (n/a 293P, 294L, 340B, 366I) • Central vacuum system with exterior storage hook-up • Create-A-Breeze roof vent in bedroom (n/a with dual AC option) • Generator prep • Slide-out awnings • Aluminum wheels • Double insulation roof and floor • Hi-gloss gel-coat fiberglass sidewalls • Heat strips for holding tanks • 13,500 BTU bedroom AC (non-ducted) • Wire and brace for bedroom AC • Garden tub with glass enclosure • Security lights (3) • Washer/dryer prep • Water filter • 16" undercarriage tire kit and carrier • 2 bar stools (available on 294L, 343L, 345S, 344J, 366I) • Booth dinette (n/a on 323K with island option or 295TS, 344J, 345S, 364Q, 366I) • Island kitchen base (323K only) • Cloth recliner/glider (n/a on 340B) • 2nd cloth recliner/glider (n/a on 340B) • Leather recliner/glider (n/a on 340B) • 2nd leather recliner/glider (n/a on 340B) • Ottoman with storage • Desk chair (n/a on 293P, 294L, 323K, 340B, 345S) • Sink cover • End table (n/a on 293P, 340B, 366I)

For more information, Contact your Everest dealer:

Jerry's Trailers & Campers, Inc.
2601 South 13th St.
Norfolk, NE 68701
(402) 371-1306
www.jerrystrailers.com



2642 Hackberry Drive
Goshen, IN 46526
574-535-2100

www.keystone-everest.com

2005 Keystone RV



Product information is as accurate as possible at the time of publication. Features, floorplans, and specifications are subject to change without notice. Some features listed and shown are optional.