

2006

# DAYBREAK

This could be the start of something big.



**DAMON**  
MOTOR COACH

*Value by Design*



## This could be t

If you're just getting into RVs, but are concerned about costs, there's no better place to start than behind the wheel of the new Damon DayBreak™ Motorhome.

DayBreak is everything a great RV needs to be. It's a big, full-size, wide-body coach with all the power and performance you'll ever need. It offers an impressively appointed interior with lots of room to spread out. And it has tons of storage room, including a full basement and a massive pass-through storage compartment. (You know how important storage space is!) And all this can be yours for the price of an average mini motorhome.

Put it together and you get more value than you would ever expect in a luxury motorhome. But then, that's the



## he start of something big.

Damon way — always offering more than the competition.

Damon is the only manufacturer to utilize high-quality, easy-care Carrier® roof-mounted air conditioners with programmable remote-controlled thermostats.

Solid, all-aluminum sidewall and roof construction assure a stronger, lighter weight motorhome. Plus, it's corrosion-resistant!

DayBreak is protected by Z-Coat® undercoating, the same rugged product used for planes, trains and ships. Z-Coat fights corrosion and reduces noise.

Aerodynamic gelcoated front and rear fiberglass caps give DayBreak a sleek, contemporary look you associate with a much higher priced motorhome.

A standard high quality AM/FM/CD player in the dash produces superior sound.

DayBreak motorhomes offer extra strength, rigidity and durability with their five-layer vacuum-bond laminated sidewalls. Full aluminum framing provides even more strength.

A heated holding tank area lets you travel year-round in most climates.

You can use laptop computers, telephones and other electronic devices in the cockpit with passenger-side 110-volt/12-volt outlets and telephone jack.



## Everything a great motorhome s

### Fresh for '06.

The kitchen and bath feature beautifully crafted antique brass faucets and door fixtures. You'll find antique brass lighting fixtures in the bedroom, bath and living room slide as well.

Three new stylish decors, Birch Field, Holly Springs and Rolling Oaks, provide more elegant interior design choices.

DayBreak now has a full basement, including massive pass-through storage compartments, so you

can pack everything your heart desires. Paddle door latches are like those on more expensive motorhomes.

All of DayBreak's rich, solid wood cabinets now feature a beautiful raised panel design. Also new is a deeper wood cabinet choice, Honey Maple. You'll love it.

A brand-new aerodynamic gelcoated front fiberglass cap, grill, hood, headlights and a bigger, safer windshield give DayBreak a sleek, modern look.



*The comfy bedroom offers lots of storage, plus mini blinds and a bedside TV as options.*

## ould be.

DayBreak's rack-and-pinion electric slideout system is efficient, easy-to-use and more reliable than hydraulic systems.

In all, we've made close to 30 important improvements to our 2006 DayBreak. That's 30 more reasons to choose one of America's most popular motorhomes.



*A skylight showers the bathroom with sunlight. Beautiful handcrafted wood cabinets and a wall-mounted mirror add luxury.*



*A spacious pantry with sliding drawers offers convenience and more storage space.*

# Beautiful to look at ...

Now comes the fun part — choosing your favorite fabrics, paint colors, wood styles, floor plans and other options. So design away! And enjoy!

## Décor

Choose from a selection of beautiful décor packages. All of them will make you feel right at home.

Birch Field



Holly Springs



Rolling Oaks



Dark Oak



Honey Maple



## Paint

DayBreak's exterior graphics package is new for 2006 and features a bold early morning sunrise image. Or choose our optional beige metallic paint package.



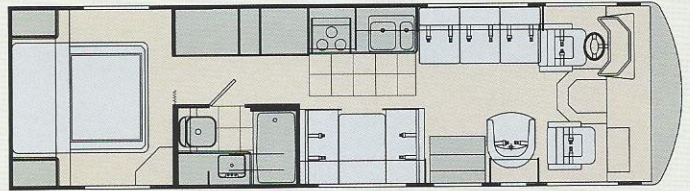
Deluxe Graphics



Beige Metallic

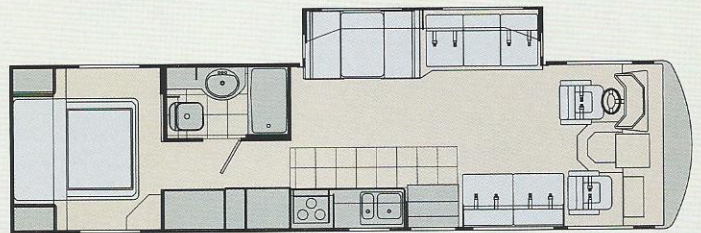
## Floor Plans

Whichever floor plan you choose, you'll be sure it's thoughtfully laid out to provide you the roomiest, most comfortable mobile living experience ever.



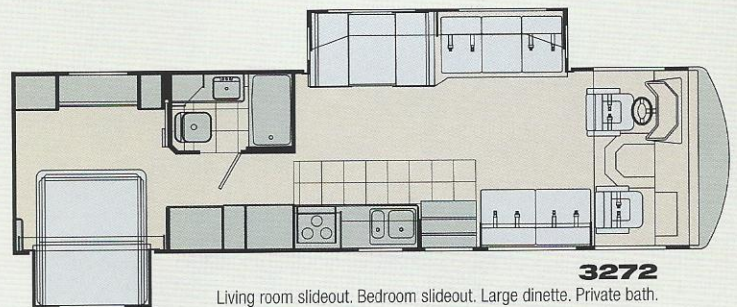
**3060**

Queen bed. Private bath. Large booth dinette.



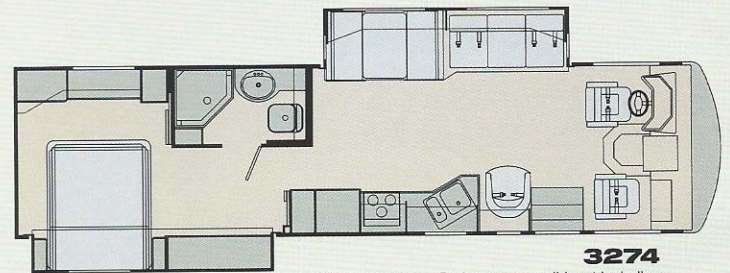
**3270**

Two sofas. Living room slideout. Private bath.



**3272**

Living room slideout. Bedroom slideout. Large dinette. Private bath.



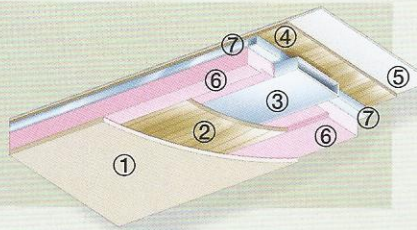
**3274**

Living room slideout. Bedroom super slideout including wardrobe. Private neo-angle shower.

# ... and a body that just won't quit.

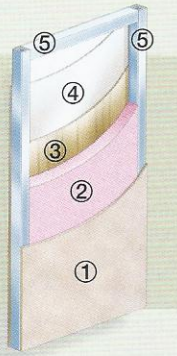
## ROOF

- ① Padded ceiling
- ② Luan (wood)
- ③ Air conditioning duct
- ④ Luan (wood)
- ⑤ TPO roofing
- ⑥ Insulation
- ⑦ Aluminum frame (tubing)



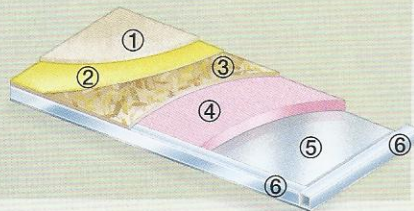
## SIDEWALLS

- ① Interior panel
- ② Insulation
- ③ Sidewall mende board (inside)
- ④ Sidewall Mende board (outside)
- ⑤ Aluminum frame (tubing)



## FLOOR

- ① Carpet
- ② Padding
- ③ Structurwood® floor
- ④ Insulation
- ⑤ Galvanized metal
- ⑥ Steel frame (tubing)



## Damon Value by Design. It's our driving force.

If it seems like most of our motorhomes are loaded with features, you're right. It's part of our "Value by Design" way of doing business. You see, we become more efficient when we offer more of your favorite amenities standard. Construction is more streamlined. And you get more motorhome. For less. This is just one of the ways we design more value into every motorhome we manufacture.

In addition, unlike many of our competitors who produce motorhomes, towables and other products, the sole focus of our business is Class A motorhomes. We believe this simplifies our manufacturing process and helps us focus on doing a single job exceptionally well. Doing that job well also means using only high-quality materials, components and state-of-the-art construction techniques. All told, it's what we call, "Value by Design."

Value by Design. It's more than a slogan; it's our way of delivering more motorhome for your money.

## CHASSIS

Quality construction starts with the chassis. And DayBreak uses only the finest: either a robust, rugged Ford® or Workhorse® chassis, depending on the floor plan you choose.

**Engine**  
Choice of two tough, dependable engines: coaches on a Workhorse chassis are powered by an 8.1-liter, V-8 engine; coaches on the Ford chassis come with a 6.8-liter, V-10 engine.

**Steel Firewall**

**Steel Truss Supports**

**Aluminum Framing**  
All wall openings for doors, windows and other components are framed in aluminum tubing with welded joints. This strengthens the coach body. The 5 1/2 inch welded aluminum header provides additional strength in slide room openings.

**Utilities**  
DayBreak's heated holding tanks and fully contained plumbing systems let you travel in almost any season. Tanks are mounted horizontally for easier servicing and maintenance.

**Angled Supports**  
Using the engineering techniques perfected in bridge construction, the angled supports in our sidewalls provide additional stability and strength.

**Basement and Storage**  
DayBreak basement construction incorporates a strong, welded-steel truss system. It provides a full basement and massive pass-through Rotocast storage compartments.



Above is an actual chassis with sidewall framing. Structure may vary by floor plan.

## DayBreak standard specifications and features

### Bathroom

ABS plastic shower surround  
Shower door  
Skylight in tub/shower  
Power vent  
Hand-flush toilet  
Medicine cabinet  
Hardwood-framed mirror  
Wallpaper border

### Bedroom

Standard foam mattress  
Bedsprad  
Pillow shams and pillows  
TV area and jack  
Mini blinds  
Framed mirror over bed (3060/3270)

### Chassis

Leveling jacks with semi-automatic touchpad controls. (N/A 3060)  
Stainless-steel wheel liners  
Front and rear mud flaps  
Trailer hitch (Workhorse: 3,500 tow lbs. / 350 tongue lbs. | Ford: 5,000/500)  
Under-hood light  
Emergency start circuit  
Automatic transmission with overdrive  
Layer of neoprene vibration dampener

### Cockpit

Vinyl covered dash with pod  
AM/FM/CD player (single-disc, in-dash)  
Cruise control  
Tilt steering wheel  
Map lights  
Dash fans  
Tinted wraparound windshield  
Windshield privacy shade  
Side-mounted power mirrors with heat

Reclining swivel captain's chairs  
3-point, wall-mounted seat belts  
Sun visors  
Electronically controlled dash air conditioning  
Backup monitor system with audio (N/A 3060)  
Drink holders

### Entry

Electric exterior entrance step  
Battery access in stairwell

### Exterior

Wide-body design  
Rear ladder  
Fiberglass front and rear caps  
Side-mounted patio awning  
Side-mounted awning over slideout(s). (N/A 3060)  
White smooth fiberglass exterior with deluxe graphics  
Radius-cornered domed TPO roof  
Locking exterior storage doors  
White-trimmed, radius-topped entrance door with deadbolt lock and black-trimmed window with shade and valance  
Black-framed, radius-cornered windows  
Patio light  
Easy-to-clean, lighted rotocast storage compartments  
Pass-through storage compartment



A cavernous cargo area lets you bring everything you'll ever need on the road.

### Kitchen

Refrigerator: flush-mounted, double-door  
Refrigerator: raised-panel hardwood front (oak or maple)  
3-burner range and oven  
Range cover  
Microwave oven  
Lighted power range hood  
Monitor panel with LPG readout  
Sink covers  
Solid-wood, raised-panel cabinet doors (upper and lower)  
Vinyl tile flooring  
Booth dinette  
Mini blinds  
Wallpaper border

### Living Area

Sofa bed  
Lambrequin window treatments  
Mini blinds throughout  
100% nylon carpet with stain treatment and pad  
25-inch color TV with full-function remote and antenna booster and jack

### Utilities

Air conditioner: 13,500-BTU ducted central (front)  
Remote, thermostatically-controlled air conditioning  
Furnace: 31,000-BTU electronic ignition, floor-ducted with surface-mounted door  
Water heater: 6-gallon gas with electronic ignition and surface-mounted door  
Water heater bypass kit  
Pre-wired for generator with auto changeover  
Converter: 60-amp  
Dual 6-volt auxiliary batteries



DayBreak's Carrier® roof-mounted air conditioner is run by this programmable remote-control thermostat.

Battery disconnect  
30-amp, 120-volt service  
Enclosed and heated holding tanks

Telephone hookup  
Cable TV/satellite hookup inside storage area  
Pre-wired for roof-mounted satellite dish  
Exterior GFCI receptacle  
Carbon monoxide, LP gas and smoke detectors

### Popular Options

Vinyl tile flooring in bathroom  
Upgraded innerspring mattress  
13-inch color TV in bedroom (19" in 3274)  
Partial paint package  
Refrigerator: large, flush-mounted double-door  
Hide-a-bed in living area  
Video package (VCR/DVD player and control center)  
Air conditioner: 13,500-BTU ducted central (rear)  
Air conditioner: 15,000-BTU ducted central upgrade (front)  
Generator: 5.0 kW Generac® Impact™ (30-amp service only)  
Generator: 5.5 kW Onan® Marquis Gold™  
Generator: 5.5 kW Onan® Marquis Gold™ LP (European)  
50-amp, 120-volt service (N/A with 5.0 kW Generac® generator)  
Exterior shower

Weights and Measures	3060	3270	3272	3274
Chassis	Workhorse/Ford	Workhorse/Ford	Workhorse/Ford	Ford
Wheelbase	190	216.5	208	228
Overall Length	31'6"	34'7"	33'7"	35'3"
Overall Width	101"	101"	101"	101"
Overall Height with AC	11'8"	11'8"	11'8"	11'8"
Std. weight (approx. lbs.)	13185/13847	14972/16337	15032/15957	N/A
GVWR	16K/15.7K	18K/20.5K	18K/20.5K	20.5K
GCWR	21K	22K/26K	22K/26K	26K
Freshwater (approx. gal.)	45	75	75	75
Grey/black water (approx. gal.)	50	50	50	50
LP (lbs.)	103.5	103.5	103.5	103.5
Sleeping capacity	4	5	5	4
Exterior storage capacity (cu. ft.)	78	88	52	85
Interior Drawers	9	10	14	15
Interior Drawer capacity (cu. ft.)	6	8	7	9
Fuel capacity (approx. gal.)	75	75	75	75



**RVIA**



Jerry's Trailers & Campers  
2601 South 13th St.  
Norfolk, NE 68701  
(402) 371-1306



**DAMON**  
MOTOR COACH

P.O. Box 2888 • Elkhart, IN 46515  
Customer Service: 800-860-3812  
Sales Department: 800-860-5658  
[www.DamonRV.com](http://www.DamonRV.com)

**THOR**  
AMERICA'S BEST RV VALUE

DC 8/05 © 2005 Damon Motor Coach Printed in U.S.A.

Due to constant product improvements, the specifications, component parts and standard/optional equipment are subject to change without notice or obligation. Product photography or diagrams may show equipment that is optional. Damon Motor Coach reserves the right to make changes in prices and models and to discontinue models without notice or obligation. Components, parts or chassis may have been manufactured at times other than the model year indicated. All capacities are approximate and dimensions are nominal. All dry weights are based on standard model features and do not include optional features or equipment. Various RV components and features may differ to conform to local codes. Due to EPA environmental restrictions, engine power and torque ratings may change mid-year.