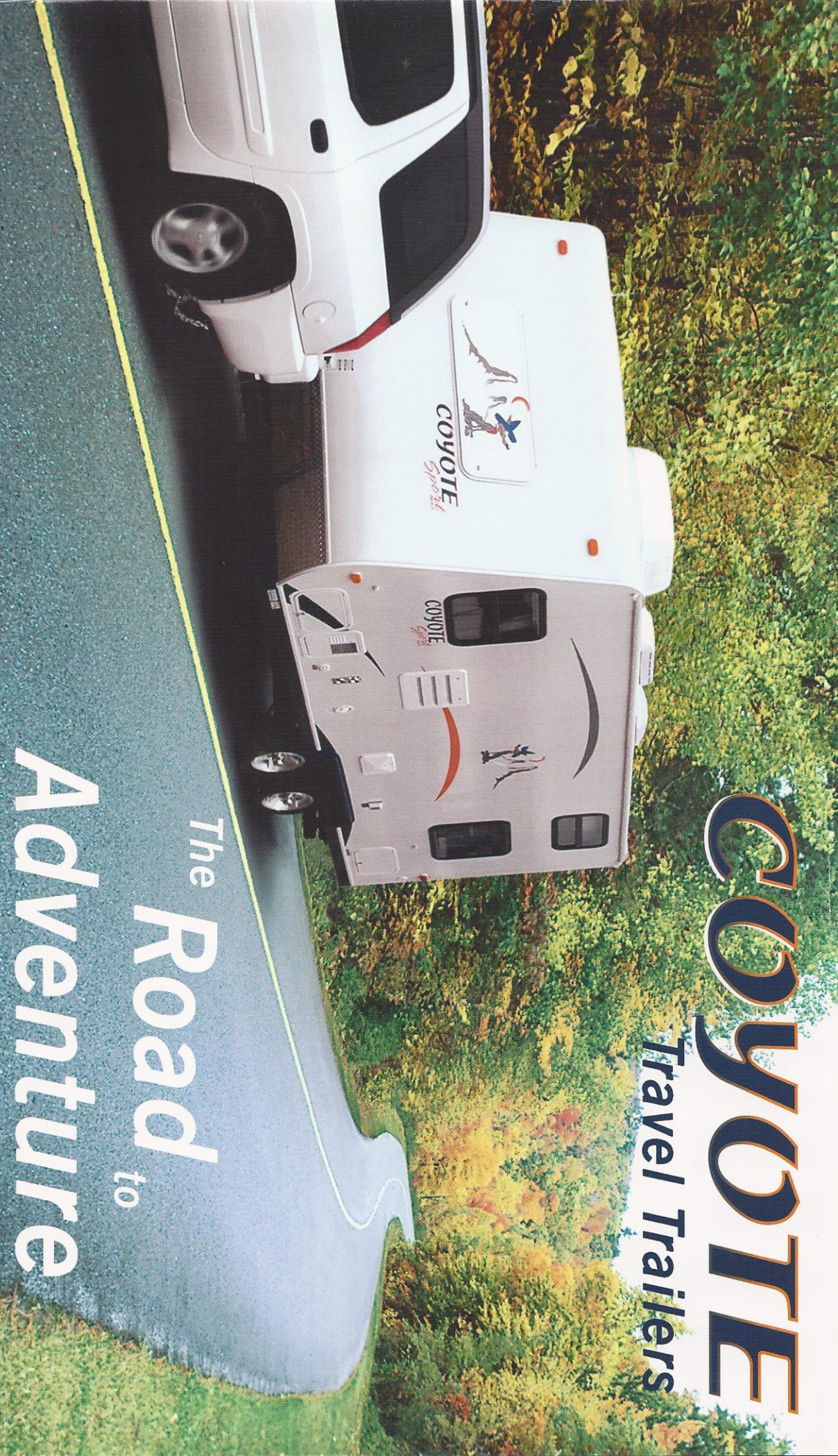


# COYOTE

Travel Trailers



The Road to  
**Adventure**



**COYOTE**



**COYOTE**  
*Sport*



**COYOTE**  
**ROCK CLIMBER**  
*by K-Z*



# COYOTE

Let the adventure begin!



## *A classic travel trailer for your road to adventure*

In today's busy world, spending time with your family is precious. Whether you're off on a week-long adventure or a weekend at the beach, the Coyote by K-Z is the perfect place to reconnect.

With many different floor plans available, you are certain to find one to fit your needs.

When the day's adventure brings you inside, the roomy Coyote allows you all the comforts of home. An ample kitchenette, with optional 17" oven, is the ideal place to whip up dinner or a light snack.

The optional AM/FM/CD player and cable-ready TV let you catch-up on world events, or what's going on in your own backyard.

Outside, a generous pass-through storage compartment lets you keep your outdoor equipment organized. An optional exterior grill and optional exterior shower allow you to fully enjoy the great outdoors.

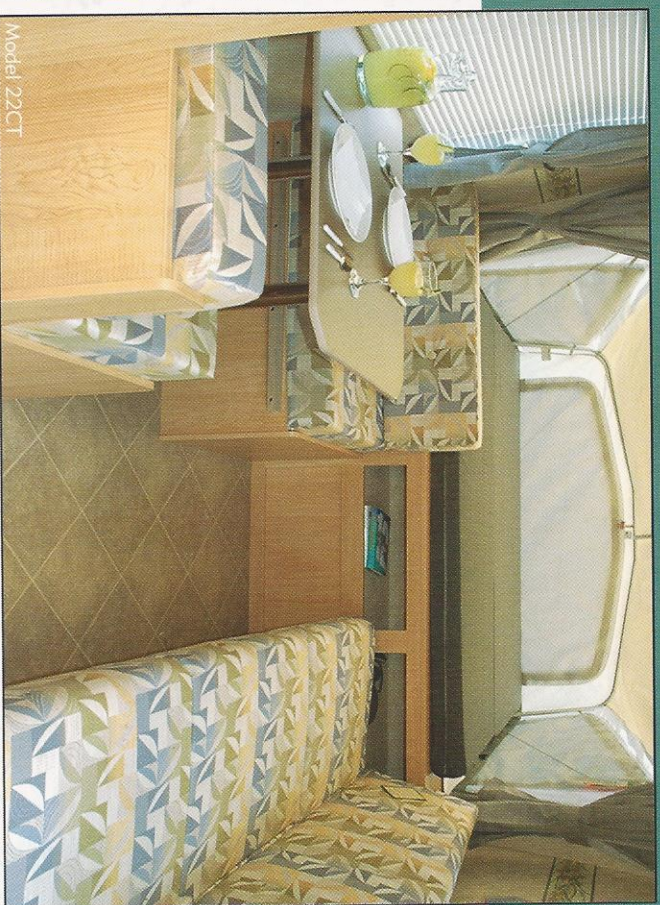


Optional Sunbrella tent ends are breathable and mildew resistant.

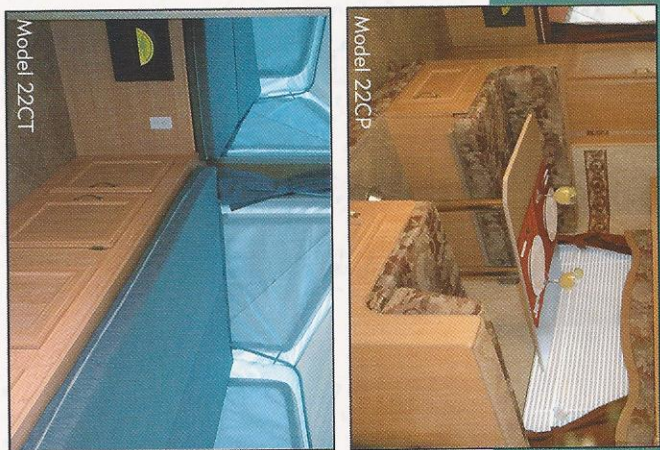




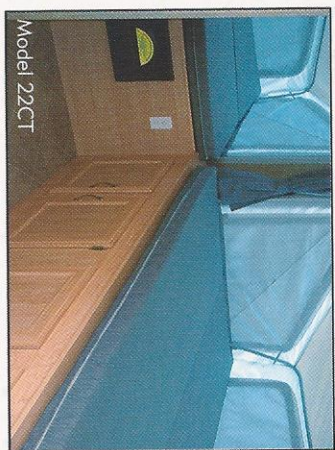
Model 22CP



Model 22CT



Model 22CP



Model 22CT

You can rest assured that storage will never be a problem in your Coyote unit. Large inside wardrobes, lots of kitchen cabinets, overhead compartments and cabinets beneath the bunks allow plenty of room for your indoor storage needs.

Classy color schemes and light maple wood cabinets create beautiful interiors. The largest units are equipped with a slideout to increase your living space. The tent extensions come with queen-sized mattresses for a good night's sleep.



**Beachfront**



**Autumn**

The interior of the Coyote is available in two beautiful decors.

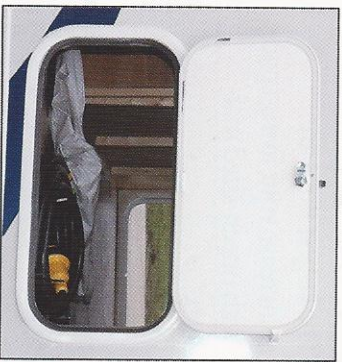


Model 22CP



# COYOTE Sport

## Get up and go!



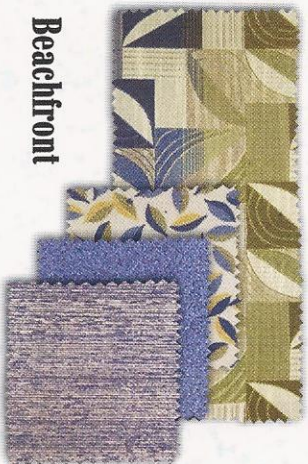
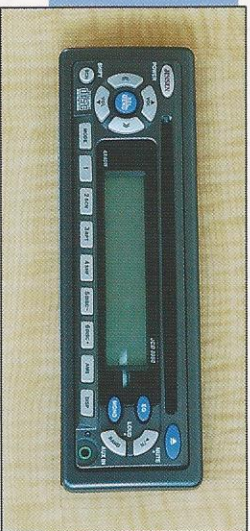
### *Lightweight but durable, with the comforts of home*

When you're ready to get up and go, you'll love the Coyote Sport by KZ. Ruggedly built to go anywhere but lightweight so that it can be easily towed behind small SUVs and light trucks.

After a long day of fun, the interior of the Sport is the perfect place to kick back and relax. The kitchenette provides ample room for cooking everything from quick

snacks to hearty meals. The dinette benches are soft and comfortable. The bunk beds and queen beds (optional on some models) ensure a good night's sleep.

The exterior pass-thru storage makes storing and retrieving items a breeze. An optional exterior shower allows you to clean up quickly. The Sport is the perfect trailer for a quick weekend get-away or an extended stay.



**Beachfront**

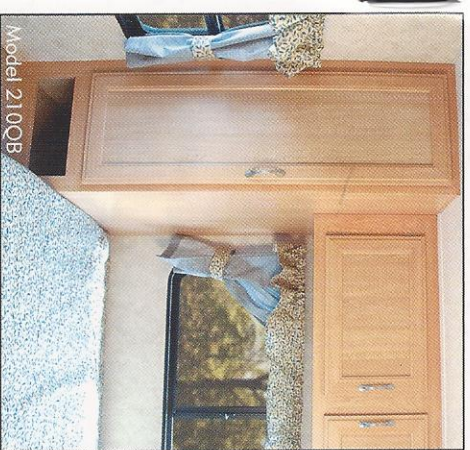


**Autumn**

The interior of the Sport is available in two beautiful decors.



Model 2100B



Model 2100B



Model 2100B



Model 2100B

You'll love the storage room. The Sport features overhead bins, kitchen cabinets, pull-out drawers and bedroom wardrobes. Plug your MP3 player into the auxiliary jack to listen to your favorite tunes on the stereo system. The Sport has among the industry's largest windows for its class. With all that natural daylight and the light maple wood interior, you'll be sure to feel at home.



# COYOTE ROCK CLIMBER by K-Z

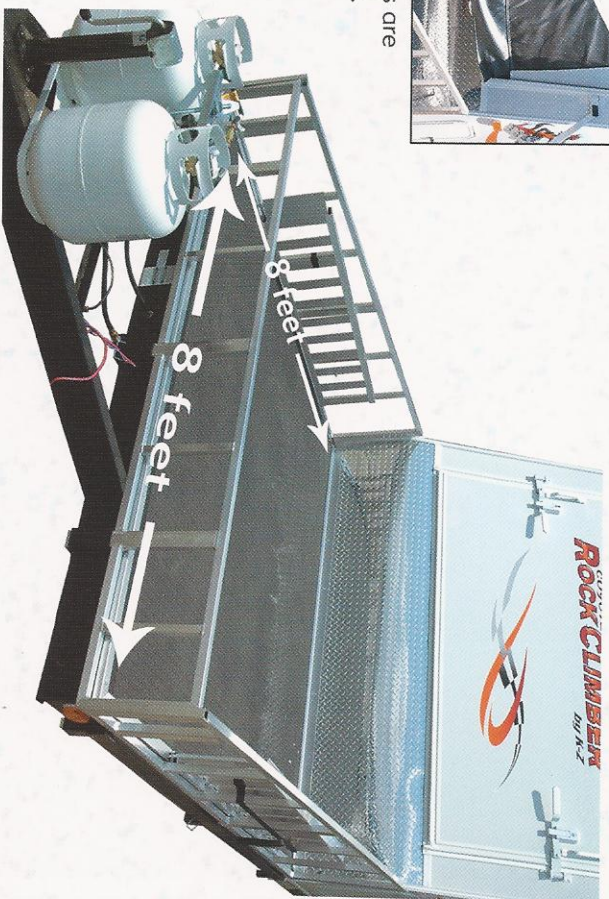
Take a ride on the wild side



Optional floodlights allow the fun to continue after the sun goes down.



The optional Sunbrella tent ends are breathable and mildew resistant.



*Sporty on the outside, with the comforts of home on the inside*

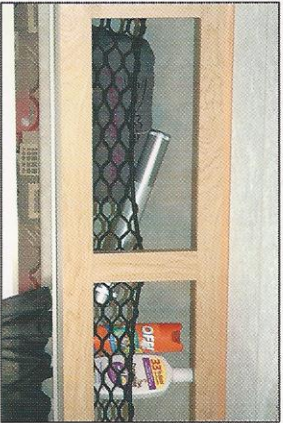
The Coyote Rock Climber by KZ is the perfect way to unleash your wild side. The rugged exterior is designed for the off-roading experience.

The diamond-injected fenders and 15" aluminum mud bogging tires stand up to any challenge. The high clearance lets you get to where you want to go. The 8x8-foot forward platform allows you take your "toys" with you. It easily accommodates two ATVs, four dirt motorbikes or four bicycles.

The pass-thru storage system gives you plenty of space to store accessories. An optional exterior grill and optional exterior shower allow you to fully enjoy the outdoor experience.



You don't have to sacrifice comfort to own a rugged trailer. The interior of the Rock Climber is beautifully appointed with light maple cabinets and richly-colored fabrics. The kitchenette provides ample room for cooking your favorite meals and snacks. The large tents open up to offer queen-size beds for a great night's sleep. And there's plenty of room for storage. Cargo netting keeps items secure in overhead bins but within easy reach.



**Beachfront**



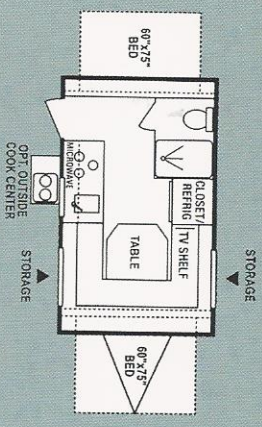
**Autumn**

The interior of the Rock Climber is available in three beautiful decors. Adrenaline is featured in the photos on this page.

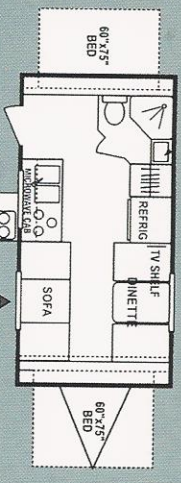


# Floor Plans and Specifications

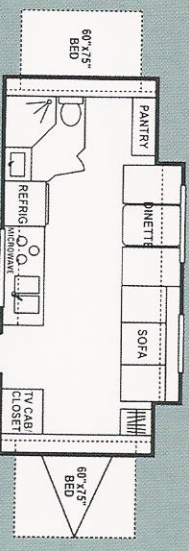
## Coyote



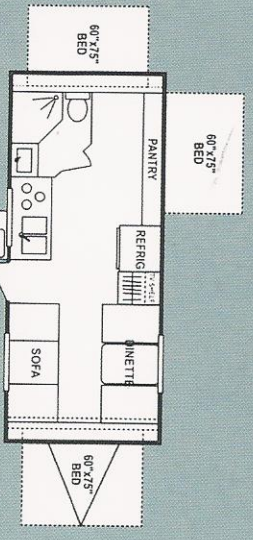
16C-UVW 2854 • Length 17'7"



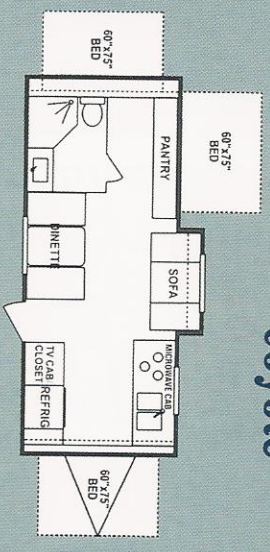
20C-UVW 3405 • Length 20'5"



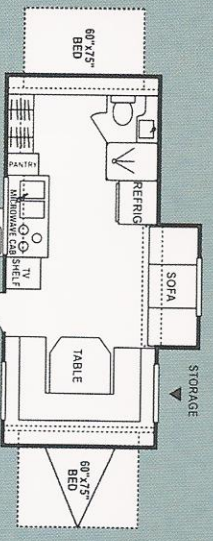
22CP-UVW 4370 • Length 23'4"



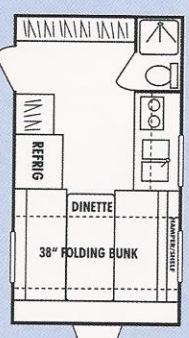
22CT-UVW 3650 • Length 23'4"



23CFK-UVW 4310 • Length 24'6"



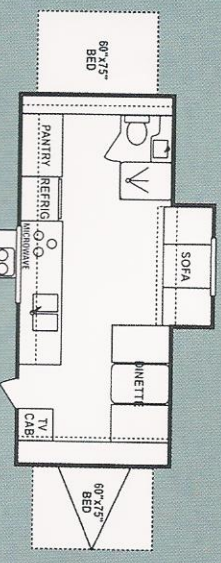
23CMS-UVW 4200 • Length 24'6"



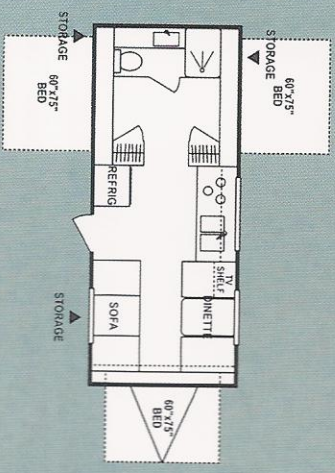
CS130-UVW 2073 • Length 16'11"



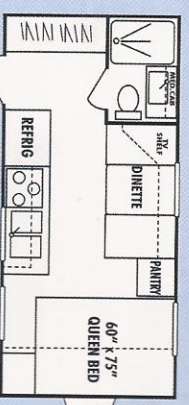
CS160-UVW 2370 • Length 19'1"



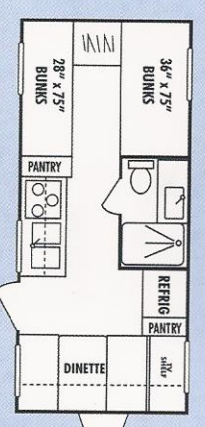
23CS-UVW 4351 • Length 24'6"



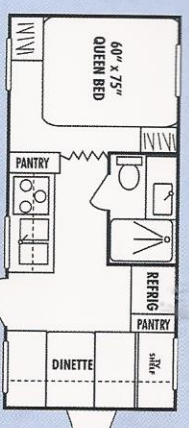
23CT-UVW 3864 • Length 23'4"



CS180-UVW 2962 • Length 21'9"



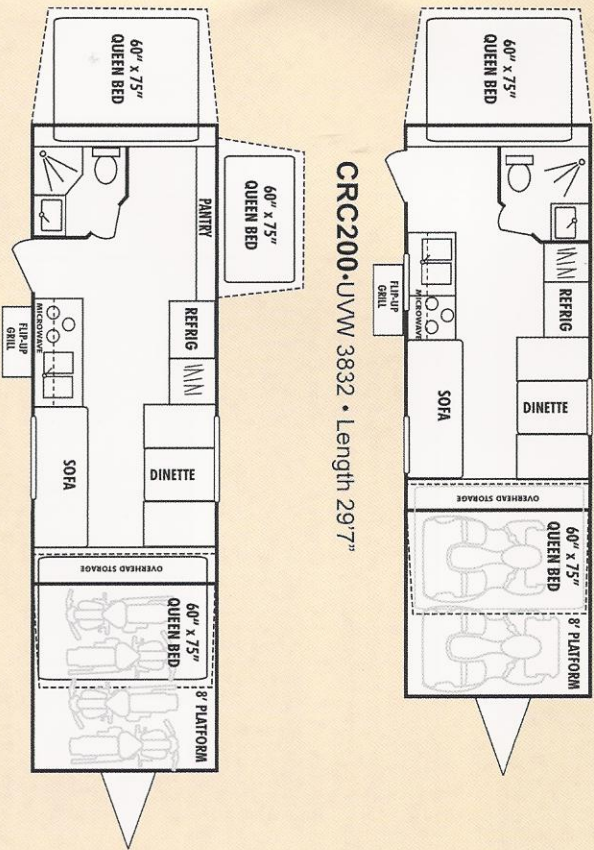
CS210-UVW 2966 • Length 22'9"



CS210QB-UVW 2966 • Length 22'9"

## Coyote Sport

# Rock Climber



# Coyote

|                            | 16C   | 20C   | 22CP  | 22CT  | 23CFK | 23CWS | 23CS  | 23CT  |
|----------------------------|-------|-------|-------|-------|-------|-------|-------|-------|
| UVW                        | 2654  | 3205  | 4170  | 3450  | 4110  | 4000  | 4151  | 3664  |
| Dry Hitch Weight           | 380   | 440   | 530   | 470   | 700   | 570   | 440   | 510   |
| Dry Axle Weight            | 2274  | 2765  | 3640  | 2980  | 3410  | 3430  | 3711  | 3154  |
| NCC (Net Carrier Capacity) | 1172  | 2795  | 1830  | 2550  | 1890  | 2000  | 1849  | 2336  |
| GVWR                       | 3826  | 6000  | 6000  | 6000  | 6000  | 6000  | 6000  | 6000  |
| Interior Height            | 78"   | 78"   | 78"   | 78"   | 78"   | 78"   | 78"   | 78"   |
| Exterior Width             | 96"   | 96"   | 96"   | 96"   | 96"   | 96"   | 96"   | 96"   |
| Exterior Length            | 177"  | 205"  | 234"  | 234"  | 246"  | 246"  | 246"  | 234"  |
| Exterior Height (w/ A/C)   | 10'1" | 10'1" | 10'1" | 10'1" | 10'1" | 10'1" | 10'1" | 10'1" |
| Fresh Water Capacity       | 30    | 30    | 30    | 30    | 30    | 30    | 30    | 30    |
| Black Water Capacity       | 32    | 32    | 32    | 32    | 32    | 32    | 32    | 32    |
| Gray Water Capacity        | 32    | 32    | 32    | 32    | 32    | 32    | 32    | 32    |
| LP Gas Capacity            | 40    | 40    | 40    | 40    | 40    | 40    | 40    | 40    |
| Furnace BTUs               | 16000 | 16000 | 20000 | 20000 | 20000 | 20000 | 20000 | 20000 |
| Tire Size (Radial)         | 14"   | 14"   | 14"   | 14"   | 14"   | 14"   | 14"   | 14"   |
| Awning Size                | 11'   | 14'   | 14'   | 14'   | 14'   | 14'   | 14'   | 17'   |
| Sleeping Capacity          | 6     | 8     | 8     | 8     | 10    | 10    | 8     | 10    |

# Coyote Sport

|                            | CS130  | CS160 | CS180 | CS210EH | CS210QB | 20RBH |
|----------------------------|--------|-------|-------|---------|---------|-------|
| UVW (w/o options)          | 2073   | 2462  | 2962  | 2966    | 2836    | 2688  |
| UVW (w/ options)           | 2655   | 2965  | 3377  | 3775    | 3612    | 3374  |
| Dry Hitch Weight           | 362    | 283   | 195   | 589     | 556     | 466   |
| Dry Axle Weight            | 2293   | 2682  | 3182  | 3186    | 3056    | 2908  |
| NCC (Net Carrier Capacity) | 927    | 1038  | 1038  | 1534    | 1664    | 2312  |
| GVWR                       | 3000   | 3500  | 4000  | 4500    | 4500    | 5000  |
| Interior Height            | 78"    | 78"   | 78"   | 78"     | 78"     | 78"   |
| Exterior Width             | 84"    | 84"   | 96"   | 96"     | 96"     | 96"   |
| Exterior Length            | 16'11" | 19'1" | 21'9" | 22'9"   | 22'9"   | 20'4" |
| Exterior Height (w/o A/C)  | 8'6"   | 8'6"  | 8'11" | 8'11"   | 8'11"   | 9'0"  |
| Fresh Water Capacity       | 25     | 32    | 32    | 32      | 32      | 32    |
| Black Water Capacity       | 8      | 30    | 30    | 30      | 30      | 30    |
| Gray Water Capacity        | 30     | 30    | 30    | 30      | 30      | 30    |
| LP Gas Capacity            | 20     | 20    | 40    | 40      | 40      | 40    |
| Furnace BTUs               | 16000  | 16000 | 16000 | 20000   | 20000   | 20000 |
| Tire Size (Radial)         | 14"    | 14"   | 13"   | 13"     | 13"     | 14"   |
| Awning Size                | 9'     | 12'   | 14'   | 14'     | 14'     | 14'   |

# Rock Climber

|  | UVW (w/o options) | UVW (w/ options) | Dry Hitch Weight | Dry Axle Weight | NCC (Net Carrier Capacity) | GVWR | Interior Height | Exterior Width | Exterior Length | Exterior Height (w/o A/C) | Fresh Water Capacity | Black Water Capacity | Gray Water Capacity | LP Gas Capacity | Furnace BTUs | Tire Size (Radial Mud Boggers) | Awning Size |
|--|-------------------|------------------|------------------|-----------------|----------------------------|------|-----------------|----------------|-----------------|---------------------------|----------------------|----------------------|---------------------|-----------------|--------------|--------------------------------|-------------|
|  | 3832              | 4237             | 280              | 4052            | 2668                       | 6500 | 78"             | 96"            | 29'7"           | 8'11"                     | 55                   | 30                   | 30                  | 40              | 20000        | 15"                            | 14'         |
|  | 4332              | 4791             | 334              | 4457            | 2263                       | 6500 | 78"             | 96"            | 32'4"           | 8'11"                     | 55                   | 30                   | 30                  | 40              | 20000        | 15"                            | 14'         |



Coyote



Sport



Rock Climber



# Standards and Features

## Towing Guide\*

The following tow ratings are the highest available for the respective 2006 model year vehicle shown. Certain optional equipment may be required and other restrictions may apply. Consult the latest manufacturer's towing guide (available at your automotive dealership) or your vehicle owner's manual to verify the tow rating provided.

| Model                        | Engine        | Tow Capacity | Model                    | Engine      | Tow Capacity | Model                  | Engine        | Tow Capacity |
|------------------------------|---------------|--------------|--------------------------|-------------|--------------|------------------------|---------------|--------------|
| <b>ACURA</b>                 |               |              | <b>GENERAL MOTORS</b>    |             |              | <b>LAND ROVER</b>      |               |              |
| MDX                          | 3.5L V-6      | 4500*/3500*  | Avalanche 1500           | 5.3L V-8    | 8,200/7,900  | LR3                    | 4.4L V-8      | 5,500        |
| <b>BMW</b>                   |               |              | Canyon/Colorado Crew Cab | 3.5L I-5    | 4,000        | Freelander             | 2.5L V-6      | 2,500        |
| X3                           | 3.0i 3.0L I-6 | 3,500        | Denali/Silverado SS      | 6.0L V-8    | 8,100        | Range Rover            | 4.4L V-8      | 5,500        |
| X5                           | 4.6L V-8      | 6,000        | Escalade EXT             | 6.0L V-8    | 7,300        | <b>LEXUS</b>           |               |              |
| <b>DAIMLER/CHRYSLER</b>      |               |              | Sierra/Silverado 1500    | 4.8L V-8    | 8,000        | GX 470                 | 4.7L V-8      | 6,500        |
| Dakota Club Cab              | 4.7L V-8      | 7,150        | 1500 Crew Cab            | 5.3L V-8    | 7,500        | LX 470                 | 4.7L V-8      | 5,000        |
| Dakota Quad Cab              | 4.7L V-8      | 7,050/6850   | Silverado SS/Denali      | 6.0L V-8    | 8,100        | <b>MAZDA</b>           |               |              |
| Ram 1500 Reg Cab             | 5.7L V-8      | 9,250/8,850  | Aztek                    | 3.4L V-6    | 3,500        | B2300                  | 2.3L I-4      | 2,260        |
| Ram 1500 Quad Cab            | 5.7L V-8      | 8,900/8,600  | Blazer 2-door            | 4.3L V-6    | 5,700/5,400  | B3000                  | 3.0L V-6      | 2,640/2,300  |
| Durango                      | 5.7L V-8      | 8,950/8,650  | Envoy XUV, XL            | 4.2L I-6    | 6,000/5,800  | B4000                  | 4.0L V-6      | 5,980/5,660  |
| Grand Cherokee               | 5.7L V-8      | 8,950/8,650  | Trailblazer EXT          | 4.2L I-6    | 6,000/5,800  | Tribute                | 3.0L V-6      | 3,500        |
| Liberty                      | 3.7L V-6      | 5,000        | Envoy/Trailblazer        | 5.3L V-8    | 7,000/6,500  | <b>MINI</b>            |               |              |
| G-Class                      | 5.4L V-8 SC   | 7,000        | Equinox                  | 3.4L V-6    | 3,500        | Montero                | 3.8L V-6      | 5,000        |
| GST                          | 3.7L V-6      | 3,500        | Escalade                 | 6.0L V-8    | 8,100        | <b>NISSAN</b>          |               |              |
| ML350                        | 3.7L V-6      | 6,200        | H1 Station Wagon         | 6.5L V-8 TD | 7,409        | Armada                 | 5.6L V-8      | 9,100        |
| Pacifica                     | 3.8L V-6      | 3,500        | H2                       | 6.0L V-8    | 6,700        | Frontier               | 4.0L V-6      | 6,000        |
| Wrangler                     | 4.0L I-6      | 2,000        | Rainier                  | 5.3L V-8    | 6,700/6,500  | Murano                 | 3.5L V-6      | 3,500        |
| Wrangler Unlimited           | 4.0L I-6      | 3,500        | Rendezvous               | All         | 3,500        | Pathfinder             | 4.0L V-6      | 6,000        |
| Towan LWB                    | 3.8L V-6      | 3,800/3,500  | SRX                      | 4.6L V-8    | 4,250        | Titan Crew Cab         | 5.6L V-8      | 9,400        |
| Town & Country LWB           | 3.8L V-6      | 3,800        | Suburban/Yukon XL 1500   | 5.3L V-8    | 8,400/8,100  | Xterra                 | 4.0L V-6      | 5,500        |
| Sprinter 2500                | 2.7L I-5      | 5,000        | Tahoe/Yukon              | 5.3L V-8    | 7,700/7,800  | <b>SUBARU</b>          |               |              |
| <b>FORD/LINCOLN/MERCUURY</b> |               |              | Yukon Denali             | 6.0L V-8    | 8,200        | Outback H6             | 3.0L H-6      | 3,000        |
| Explorer Sport Trac          | 4.0L V-6      | 5,300/5,080  | VUE                      | 3.5L V-6    | 2,500        | <b>SUZUKI</b>          |               |              |
| F-150 Reg Cab                | 5.4L V-8      | 9,900/9,500  | Astro/Safari CV          | 4.3L V-6    | 5,700/5,500  | Vitara                 | 2.5L V-6      | 2,000        |
| F-150 Super Cab              | 5.4L V-8      | 9,500/9,300  | G1500 PV                 | 5.3L V-8    | 6,000        | XL-7                   | 2.7L V-6      | 3,000        |
| F-150 Super Crew             | 5.4L V-8      | 9,500/9,200  | G2500 PV                 | 6.0L V-8    | 8,000        | <b>TOYOTA</b>          |               |              |
| Ranger                       | 4.0L V-6      | 5,980/5,660  | Montana/Venture          | 3.4L V-6    | 3,500        | 4Runner                | 4.7L V-8      | 7,300/7,000  |
| Aviator                      | 4.6L V-8      | 5,000/7,100  | <b>INFINITI</b>          |             |              | Land Cruiser           | 4.7L V-8      | 6,500        |
| Escape                       | 3.0L V-6      | 3,500        | FX35                     | 3.5L V-6    | 3,500        | Sequoia                | 4.7L V-8      | 6,500/6,200  |
| Expedition                   | 5.4L V-8      | 8,900/8,600  | FX45                     | 4.5L V-8    | 3,500        | Sienna                 | 3.3L V-6      | 3,500        |
| Explorer                     | 4.6L V-8      | 7,140/7,000  | QX56                     | 5.6L V-8    | 9,000/8,900  | Tacoma Reg Cab         | 4.0L V-6      | 6,500        |
| Mountaineer                  | 4.6L V-8      | 7,040/6,900  | <b>ISUZU</b>             |             |              | Tacoma Access/Dbl. Cab | 4.0L V-6      | 6,500        |
| Navigator                    | 5.4L V-8      | 8,600/8,300  | Ascender                 | 5.3L V-8    | 6,800/6,300  | Tundra Reg Cab         | 4.7L V-8      | 7,200        |
| E-150                        | 5.4L V-8      | 6,500        | Axion                    | 3.5L V-6    | 4,500        | Tundra Access Cab      | 4.7L V-8      | 7,100/6,900  |
| E-250 CV                     | 5.4L V-8      | 7,500        | Rodeo                    | 3.2L V-6    | 4,500        | Tundra Double Cab      | 4.7L V-8      | 6,800/6,500  |
| E-350 CV                     | 5.4L V-8      | 7,300        | <b>KIA</b>               |             |              | <b>VOLKSWAGON</b>      |               |              |
| <b>HONDA</b>                 |               |              | Sedona                   | 3.5L V-6    | 3,500        | Eurovan                | 2.8L V-6      | 4,400        |
| Odyssey                      | 3.5L V-6      | 3,500        | Sorento                  | 3.5L V-6    | 3,500        | Touareg                | 5.0L V-10 TDI | 7,716        |
| Pilot                        | 3.5L V-6      | 3,500        | Sportage                 | 2.0L I-4    | 2,000        | <b>VOLVO</b>           |               |              |
|                              |               |              |                          |             |              | XC 70                  | ALL           | 3,300        |

| Appliances/Equipment             | C | S | R |
|----------------------------------|---|---|---|
| Flush Mount Norcold Refrigerator | • | • | • |
| 3 Burner Range Top               | • | • | • |
| 12V Range Hood with Light        | • | • | • |
| Six Gallon Gas Water Heater      | • | • | • |
| Shurflo Water Pump               | • | • | • |
| Laminated Countertops            | • | • | • |
| Double Bowl Kitchen Sink         | • | • | • |
| Flared Copper LP Gas Lines       | • | • | • |
| Color Coded Water Lines          | • | • | • |
| Water Heater Bypass Kit          | • | • | • |
| Satin Finish High Rise Faucet    | • | • | • |
| 16,000/20,000 BTU Furnace        | • | • | • |

| Construction  | C | S | R |
|---|---|---|---|
| Welded, Aluminum Frame, Laminated Sidewalls with 1½" Polystyrene Block  | • | • | • |
| Foam Insulation (R-7)   | • | • | • |
| Welded, Aluminum Frame, Laminated Floor with 1½" Polystyrene Block Foam | • | • | • |
| Insulation (R-9)  | • | • | • |
| Frame, Brace and Wired for A/C  | • | • | • |
| Rotocast Holding Tanks  | • | • | • |
| Rotocast Fresh Water Tank   | • | • | • |
| Cable Support For Bunk Ends   | • | • | • |
| Welded I-Beam Steel Frame   | • | • | • |
| One Piece Woven Plastic Underbelly                                      | • | • | • |
| One Piece, Seamless TPO Roof  | • | • | • |

| Safety Equipment         | C | S | R |
|--------------------------|---|---|---|
| Smoke Detector           | • | • | • |
| Lp Detector              | • | • | • |
| Egress Windows           | • | • | • |
| Fire Extinguisher        | • | • | • |
| Breakaway Switch         | • | • | • |
| Carbon Monoxide Detector | • | • | • |
| Dual Safety Chains       | • | • | • |
| Monitor Panel            | • | • | • |
| Dead Bolt on Entry Door  | • | • | • |

**C=Coyote**  
**S=Coyote Sport**  
**R=Rock Climber**

| Exterior Equipment                    | C | S | R |
|---------------------------------------|---|---|---|
| Stabilizer Jacks (2)                  | • | • | • |
| White Mods wheels                     | • | • | • |
| Metal Wheel Well                      | • | • | • |
| Front Window with Flush Mount         | • | • | • |
| Stone Guard                           | • | • | • |
| Lockable Bunk Ends                    | • | • | • |
| Vinyl Tent with 5 Year Warranty       | • | • | • |
| Sewer Hose Compartment                | • | • | • |
| Heavy Duty Retractable Entry Step     | • | • | • |
| Painted Bottom Radius Metal Skirting  | • | • | • |
| Drip Spouts                           | • | • | • |
| Radius Entrance Door                  | • | • | • |
| E-Z Lube Alko Axles                   | • | • | • |
| Lockable, Radius Correr Baggage Doors | • | • | • |
| ABS Fender Skirts                     | • | • | • |
| 2 5/16" Hitch Coupler                 | • | • | • |
| Patio Light                           | • | • | • |
| 13" Radial Tires                      | • | • | • |
| 14" Radial Tires                      | • | • | • |
| 15" Radial Tires                      | • | • | • |
| 110V GFCI Exterior Receptacle         | • | • | • |
| City Water Fill                       | • | • | • |
| Gravity Water Fill                    | • | • | • |
| 20# Propane Gas Bottle                | • | • | • |
| Double 20# Propane Gas Bottles        | • | • | • |
| 30 Amp Power Cord                     | • | • | • |
| 45 Amp converter                      | • | • | • |

| Bath                         | C | S | R |
|------------------------------|---|---|---|
| Wall Mounted Light Switch    | • | • | • |
| Medicine Cabinet with Mirror | • | • | • |
| Sink and Faucet              | • | • | • |
| Adjustable Shower Head       | • | • | • |
| Power Roof Vent              | • | • | • |
| Thetford Toilet              | • | • | • |
| Shower Curtain               | • | • | • |
| ABS Shower Pan or Tub        | • | • | • |
| 12v Power Vent               | • | • | • |

| Boulder Package            | C | S | R |
|----------------------------|---|---|---|
| Riser Kit                  | • | • | • |
| Front Angle Halogen Lights | • | • | • |
| Generator Prep             | • | • | • |

| Interior Equipment                 | C | S | R |
|------------------------------------|---|---|---|
| Quilted Bedsread (Selected Models) | • | • | • |
| Shirt Wardrobe                     | • | • | • |
| 5" Cushions for Bunk Ends          | • | • | • |
| Lights in Bunk Ends                | • | • | • |
| RG6 Coax with Cable Hookup         | • | • | • |
| Maple Wood, Flat Panel Doors       | • | • | • |
| Mini Blinds                        | • | • | • |
| Vinyl Flooring                     | • | • | • |
| Wall Boarder Tape                  | • | • | • |
| Molded Plastic Drawer Bins         | • | • | • |
| Steel Drawer Frame for Bins        | • | • | • |

| Optional Equipment               | C | S | R |
|----------------------------------|---|---|---|
| 6 Cubic Refrigerator             | • | • | • |
| 17" Oven                         | • | • | • |
| Sink Cover                       | • | • | • |
| Stove Cover                      | • | • | • |
| Outside Grill                    | • | • | • |
| Outside Cook Center*             | • | • | • |
| Power Slide                      | • | • | • |
| Sunbrella Tent                   | • | • | • |
| Tub Surround                     | • | • | • |
| Gas Bottle Cover                 | • | • | • |
| Exterior Shower                  | • | • | • |
| Stabilizer Jacks                 | • | • | • |
| Spare Tire, Carrier and Cover    | • | • | • |
| Aluminum Wheels                  | • | • | • |
| Heated Bunk End                  | • | • | • |
| Customer Value/ Boulder packages | • | • | • |
| TV Antenna & Booster             | • | • | • |
| Microwave                        | • | • | • |
| 13,500 BTU A/C                   | • | • | • |
| AM/FM/CD Player                  | • | • | • |
| Awning                           | • | • | • |
| Monitor Panel                    | • | • | • |
| Bathroom Accessories             | • | • | • |

| Customer Value Package             | C | S | R |
|------------------------------------|---|---|---|
| 6 Gallon Gas/Electric Water Heater | • | • | • |
| Exterior Shower                    | • | • | • |
| 3 Burner Range Top                 | • | • | • |
| Spare Tire, Carrier and Cover      | • | • | • |
| 4 Stabilizer Jack                  | • | • | • |

\*In/a on Coyote 23CT & 23CFK)

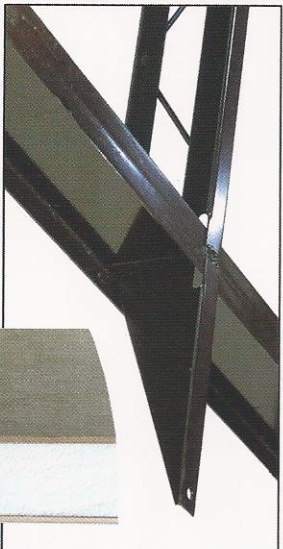


## A commitment of quality and service to our customers

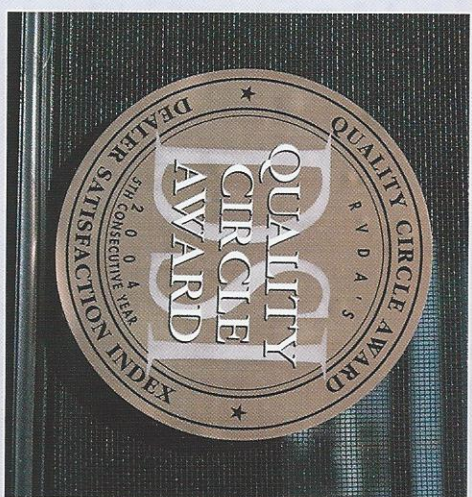
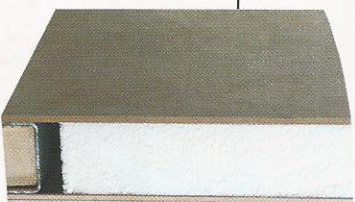
When K-Z RV began building travel trailers in 1972, the original goal was to build a product with quality from the ground up. In addition, K-Z made a

commitment to providing top-notch service to new and existing customers, as well as the many RV dealers we supply.

We continue to strive to meet that goal today, as evidenced by the dealers repeatedly recognizing us with the Quality Circle Award.



K-Z RV is committed to building high-quality travel trailers that will take you safely on many adventures. The quality starts with the double-welded I-beam chassis with outriggers for stability and durability. The frame features aluminum rails built over wood. Sidewalls offer 1½" of plastic foam insulation. All units 18-feet and longer have a crown roof.



K-Z RV is one of only seven manufacturers nationwide to earn the prestigious Quality Circle Award from the Recreational Vehicle Dealers Association. The award means K-Z was in the top 20 percent in each category of the RVDA's Dealer Satisfaction Index. K-Z earned the award from 2000-2005 and continues to offer the same level of service to earn the award for years to come.

### Dealer:

**Jerry's Trailers & Campers, Inc.**  
2601 South 13th St.  
Norfolk, NE 68701  
(402) 371-1306  
[www.jerrystrailers.com](http://www.jerrystrailers.com)



K-Z • 0985N 900W • Shipshewana, IN 46565  
E-mail [kz@kz-tv.com](mailto:kz@kz-tv.com) • [www.kz-tv.com](http://www.kz-tv.com)

*Due to continual research and advances, manufacturer reserves the right to change specifications, design, price and equipment without notice, and assumes no responsibility for any error in this literature. Some items shown are not included as standard or optional equipment. ©2006K-Z*

**2x2 WARRANTY** – The K-Z 2x2 Warranty is a manufacturer's warranty. Each K-Z product is warranted to the original purchaser for twenty-four (24) months from the original date of purchase. Coverage includes appliances, components, construction and FULL structure. Our warranty is also transferable within the first two (2) years for a small processing fee. For a copy of the warranty with full terms and conditions, ask your local K-Z Dealer.

**VEHICLE LOADING** – Every effort has been made to provide the greatest number of options for the recreational owner. Each owner is responsible to select loads allowing the recreational vehicle to remain within the manufacturer's specified chassis weight limits. Do not overload the recreational vehicle.

**UNLOADED VEHICLE WEIGHT (UVW)** – The typical weight of this trailer as built at the factory. The UVW does not include cargo, LP gas, fresh water, options or dealer-installed accessories.

**GROSS VEHICLE WEIGHT RATING (GVWR)** – The maximum permissible weight of the trailer, including the UVW plus passengers, all cargo, personal items, fluids, options and dealer-installed accessories. The GVWR is equal to or greater than the sum of the UVW and the NCC.

**NET CARRYING CAPACITY (NCC)** – The maximum weight of all passengers, personal items, fresh water, food, tools, LP gas, other cargo and dealer-installed accessories\* that can be carried by the trailer. NCC is equal to or less than the GVWR minus UVW.

\* The addition of options will decrease the NCC.

**Note:** This information is intended as a guide only. Weights of individual vehicles are approximate. Consult your Owner's Manual for complete loading, weighing and towing instructions. All weights may vary.

See specification chart above. K-Z affixes a weight label to each new RV which lists weight information for that vehicle.