

2006 TRAVEL TRAILERS

Spirit of America[®]

2006 TRAVEL TRAILERS



Spirit of America[®]



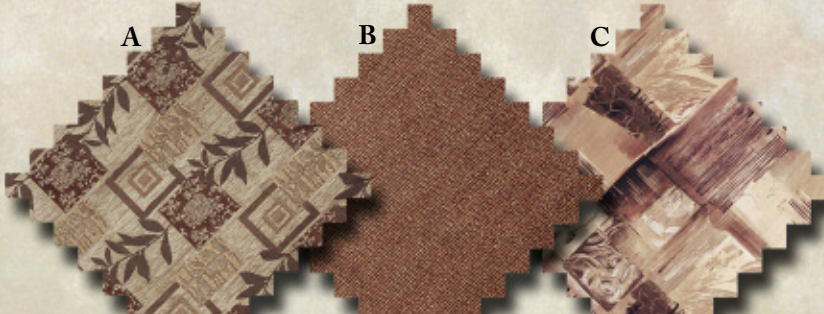
Leader to the Great Outdoors[®]



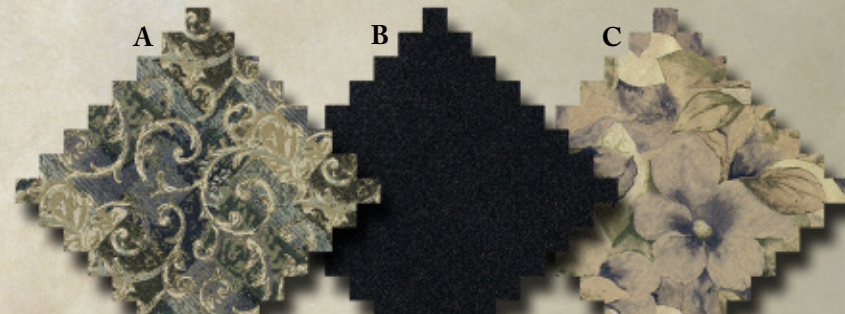
A modern kitchen area in the Spirit of America Travel Trailer features residential style Spicy Oak cabinetry, double door refrigerator, and a color matched acrylic sink with high spout faucet.



TARRAGON MOSS



TUMBLING WATERS



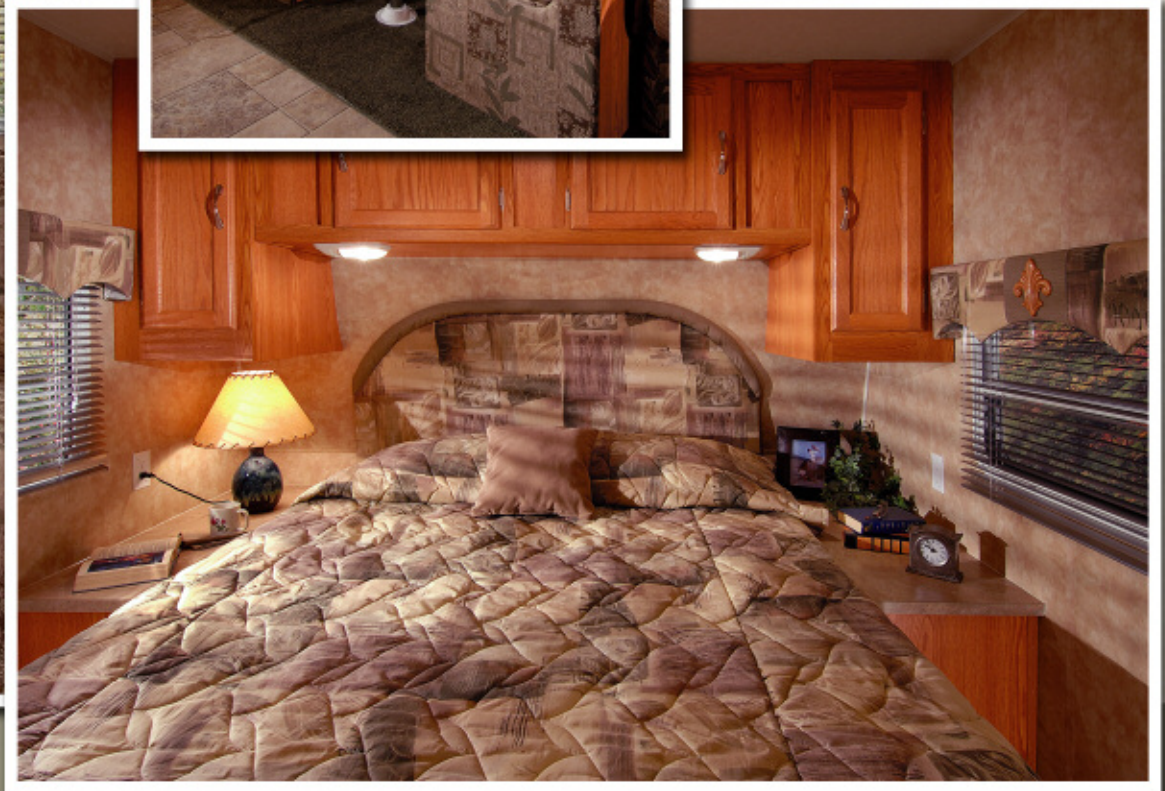


Enjoy the spacious interior and the residential appointments found throughout the Spirit of America. The 28 BHS shown here boasts a large flush floor slideroom that greatly expands your living space.



Large picture windows at the dinette and sofa, frame the beauty of the outdoors while you sit down to enjoy a meal, or are simply lounging at the end of an action packed day.

Relax...the master bedroom provides a generous retreat with a queen bed and plenty of wardrobe storage. (Except 19FLB)

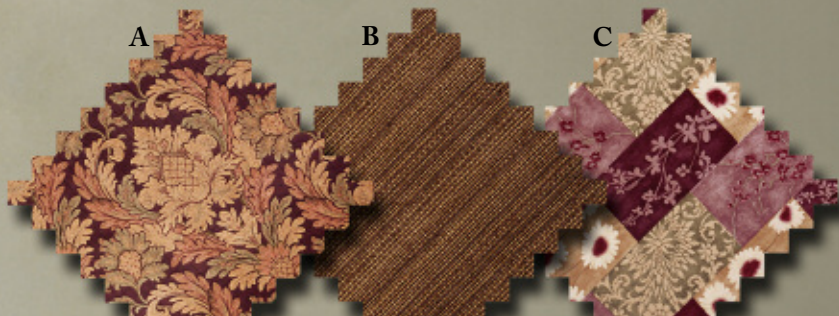


ELEGANT CABERNET

A

B

C

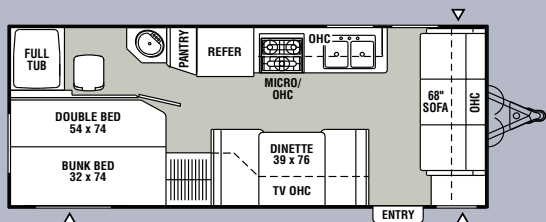


Decor Selections

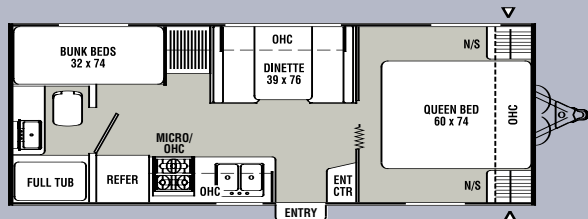
Dazzling interiors feature skillfully coordinated upholstery and window treatments. Coachmen RV chooses only top-grade fabrics wear-dated as heavy-duty. These fabrics have been tested for durability beyond 15,000 double rubs (in and out action) to simulate heavy usage. An average chair in an American home is subjected to only 3,000 double rubs per year.

Fabric Key— A. Main B. Accent C. Bedspread

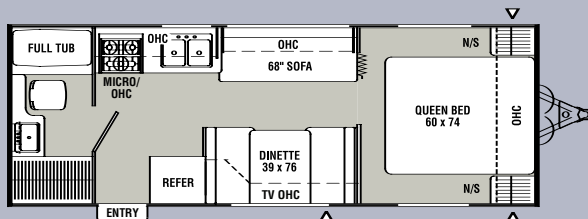
LITE FLOORPLANS



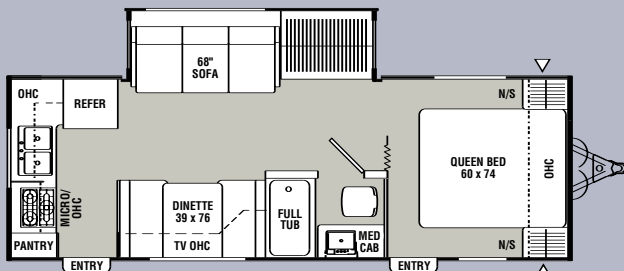
LT19FLB



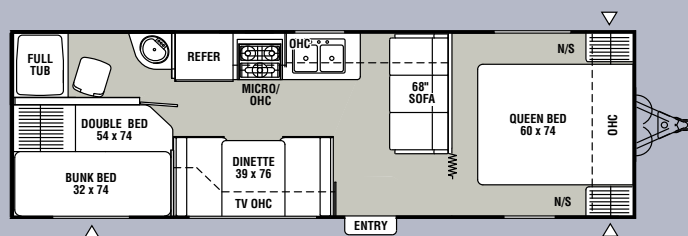
LT24TBQ



LT24RBQ



LT25RKS

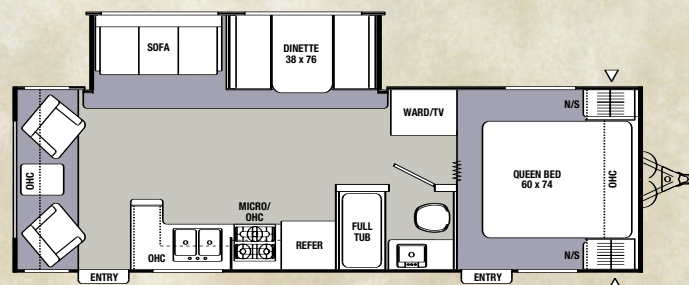


LT26DBD

SUPER SLIDE



27RBS



28RLS

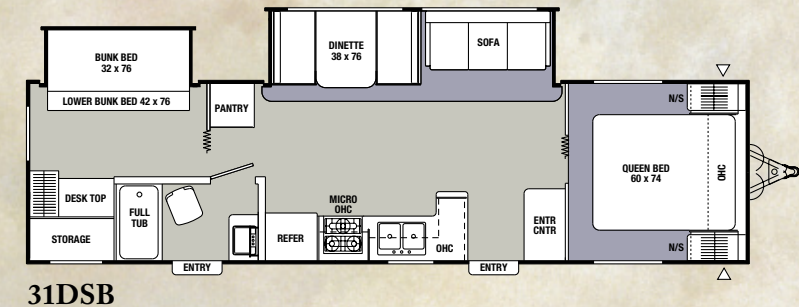
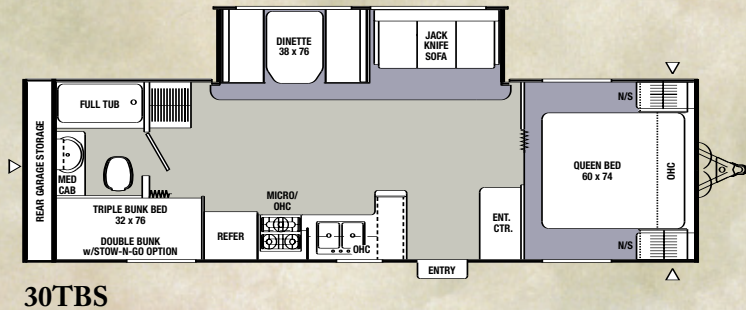
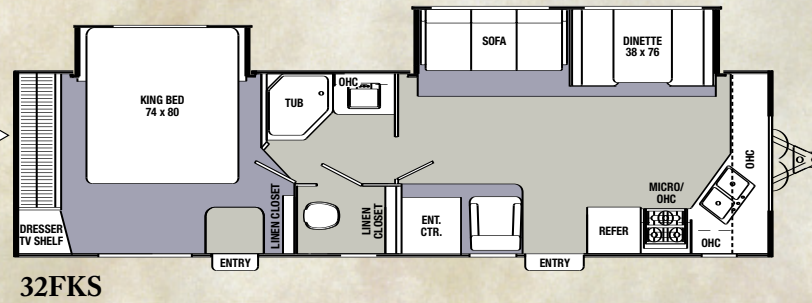
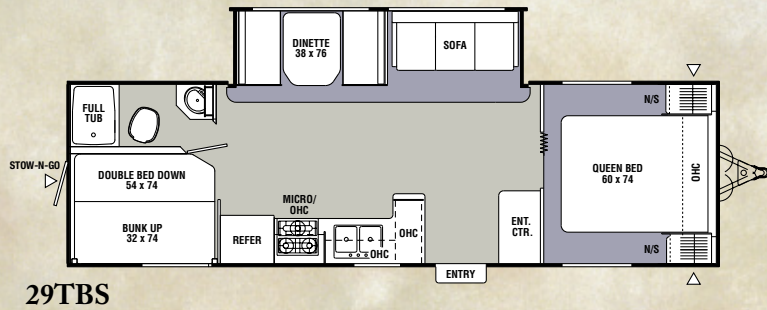
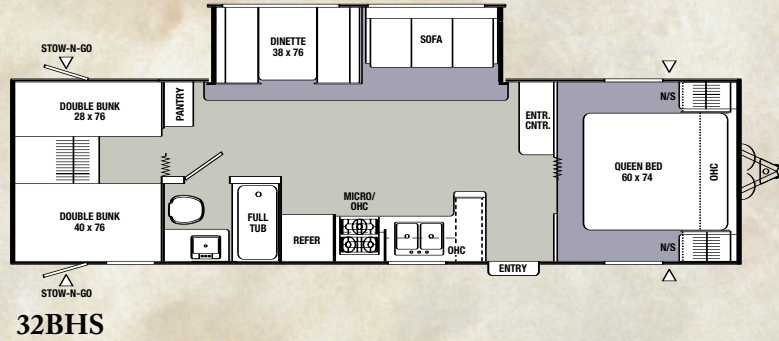
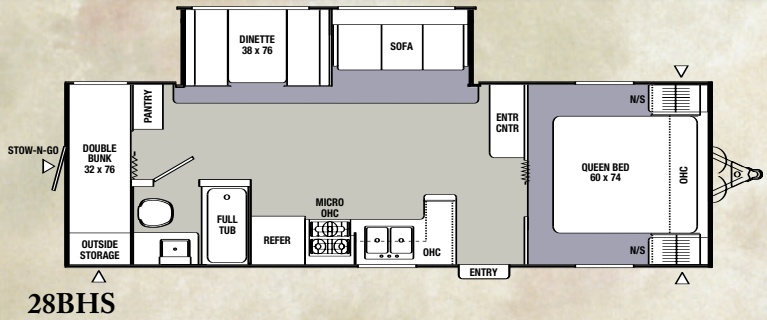
LITE SPECIFICATIONS

SPECIFICATIONS	LT19FLB	LT24TBQ	LT24RBQ	LT25RKS	LT26DBD
Base Weight (*See Note)	4,204	4,633	4,456	5,234	5,306
Carrying Capacity	1,986	1,507	1,574	2,366	2,314
Hitch Weight	590	540	430	600	620
Axle Weight	3,614	4,093	4,026	4,634	4,686
Interior Height	81"	81"	81"	81"	81"
Exterior Height	9' 10"	9' 10"	9' 10"	9' 10"	9' 10"
Exterior Length	23' 8"	26' 7"	25' 9"	27' 6"	30' 4"
Exterior Width	7' 10"	7' 10"	7' 10"	7' 10"	7' 10"
Sleeping Capacity	6	6	5	5	8
Fresh Water Capacity (gal.)	42	42	42	42	42
Waste Water Capacity (gal.)	40	30	30	30	30
Grey Water Capacity (gal.)	40	27	27	30	27
Water Heater Capacity (gal.)	6	6	6	6	6
LP Gas Capacity (lbs.)	40	40	40	40	40
Furnace Rating (x1000) BTU	25	25	25	25	25
Tire Size	X	X	X	X	X

†= Estimated X= ST205/75D15C

***Note: Base Weights**-The Spirit of America base weights reflect a long list of standard features available only as an option on most competitive brands. **These common features can add as much as 370lbs. to the base weight and may not be included in the competitive brands promoted base weight.** Features include, but are not limited to: double door refrigerator, microwave oven, 13,500 BTU roof air conditioner, television antenna, ABS tub surround, 6-gallon E.I. water heater, patio awning, stabilizer jacks, and LP bottle cover.


FLOOR PLANS




Base Weight: The weight of the unit with no fluids, cargo, optional equipment or accessories.

Carrying Capacity: This is the amount of weight available for all fluids, cargo, optional equipment and accessories. The actual "loaded" weight will depend on the equipped unit and the owner's individual choice of cargo, etc.

All information contained in this brochure is believed to be accurate at the time of publication. However, during the model year, it may be necessary to make revisions and Coachmen reserves the right to make all such changes without notice, including changes in prices, colors, materials, equipment and specifications, as well as the addition of new models and the discontinuance of models shown in this brochure. Therefore, please consult with your Coachmen dealer and confirm the existence of any materials, design or specifications that are material to your purchase decision.

 **Carpeting**

 **Outside Storage Location**

SUPERSLIDE SPECIFICATIONS

SPECIFICATIONS	27RBS	28RLS	28BHS	29TBS	30TBS	31DSB	32BHS	32FKS
Base Weight (*See Note)	6,140	6,415	6,565	6,603	6,698	7,367	7,147	8,200†
Carrying Capacity	2,610	2,315	2,255	2,137	2,112	3,503	2,753	2,300†
Hitch Weight	750	730	820	740	810	870	820	1,160†
Axle Weight	5,390	5,685	5,745	5,863	5,888	6,497	6,327	7,040†
Interior Height	81"	81"	81"	81"	81"	81"	81"	81"
Exterior Height	10' 2"	10' 2"	10' 2"	10' 2"	10' 2"	10' 2"	10' 2"	10' 2"
Exterior Length	30' 3"	30' 3"	31' 0"	31' 4"	32' 4"	34' 7"	34' 7"	35' 5"
Exterior Width	8'	8'	8'	8'	8'	8'	8'	8'
Sleeping Capacity	5	5	7	8	8	8	10	5
Fresh Water Capacity (gal.)	42	42	42	42	42	42	42	42
Waste Water Capacity (gal.)	40	30	30	40	30	30	30	30
Grey Water Capacity (gal.)	40	27	27	40	30	30	27	27
Water Heater Capacity (gal.)	6	6	6	6	6	6	6	6
LP Gas Capacity (lbs.)	60	60	60	60	60	60	60	60
Furnace Rating (x1000) BTU	30	30	30	30	30	30	30	30
Tire Size	X	X	■	X	X	■	■	■

† = Estimated X = ST225/75D15C ■ = ST225/75D15D

***Note: Base Weights**-The Spirit of America base weights reflect a long list of standard features available only as an option on most of the competitive brands. **These common features can add as much as 370lbs. to the base weight and may not be included in the competitive brands promoted base weight.** Features include, but are not limited to: double door refrigerator, microwave oven, 13,500 BTU roof air conditioner, television antenna, ABS tub surround, 6-gallon E.I. water heater, patio awning, stabilizer jacks, and LP bottle cover.



The walk around queen bed easily lifts up with the assistance of two gas struts to access another **convenient large storage area**.



Standard in every Spirit of America is a **Dolby® Digital 5.1 Surround Sound system** with DVD/CD player.



Pass through exterior storage is easily accessible from either side of the coach and provides plenty of additional space for your toys and camping gear.



The **deluxe outside shower** option features an ergonomically designed sprayer and can be conveniently tucked away in its own storage bay.



The **diamond plate stone guard** is a functional and attractive layer that is resistant to stone chips and other damage from road debris that you may come across in your travels. (Optional)



Stow-N-Go™ storage is available on several Spirit of America models. An oversized entry style door provides access to the lift up bunk storage area for your larger items like bicycles, coolers, and golf clubs without sacrificing valuable sleeping space.



Leader to the Great Outdoors®

Standard **metal drawer guides with glide wheels** provide a friction-free sliding drawer that is extremely durable. The drawer guides also act as a catch so that the drawer will not slide open during travel. Simply lift up and pull to open the drawers.



STANDARD & OPTIONAL FEATURES

INTERIOR AND DÉCOR

- Spicy Oak Cabinetry
- Mortise & Tenon Cabinet Doors
- Raised Panel Upper Cabinet Doors - Coach
- Residential Stile and Rail Cabinet Construction
- Metal Drawer Guides
- Partial Carpet (Except Lite Models)
- Linoleum Flooring (Throughout on Lites)
- Designer Box Window Valances
- Mini Blinds Throughout (Except in Bunk Area)
- Wall Paper Border
- Booth Dinette w/Picture Window
- Pedestal Dinette Table
- Jack Knife Sofa (Except 24TBQ)
- One Swivel Rocker (32FKS)
- Two Swivel Rockers (28RLS)
- LP Leak Alarm
- Fire Extinguisher
- Smoke Alarm
- Carbon Monoxide Detector

GALLEY

- 3-Burner Range with Oven
- Power/Lighted Range Hood

- Double Door Refrigerator
- Microwave Oven
- Monitor Panel
- Color Matched Acrylic Sink
- Under Sink Silverware Drawer (Except 25RKS)

SLEEPING

- Queen Bed w/ Innerspring Mattress (Except 19FLB)
- Double Bunks (24TBQ, 28BHS w/Stow-N-Go™)
- Double Bed Lower w/ Single Upper Bunk (19FLB, 26DBD, 29TBS w/Stow-N-Go™)
- Quad Bunks w/Dual Side Stow-N-Go™ Storage (32BHS)
- Triple Bunks (30TBS)
- Double Bunk Slideout (31DSB)
- King Bed Slideout (32FKS)
- Bedspread
- "Kid Pack" Bunk Organizer

ELECTRICAL/HEATING/AC

- 55 Amp Power Center
- Outside Receptacle GFI
- Patio Light

- LP Hitch Light
- Deluxe Interior Light Fixture(s)
- Double 30 LB LP Bottles (Except Lite Models)
- Double 20 LB LP Bottles (Lite Models)
- LP Bottle Cover
- 25,000 BTU E.I. Furnace (Lite Models)
- 30,000 BTU E.I. Furnace (Except Lite Models)
- In-Floor Ducted Heat
- 13,500 BTU Ducted Roof Air Conditioner
- TV Antenna and Rotor Package
- Cable TV Jack
- Home Theatre System w/ DVD/CD Player and 5.1 Surround Sound

BATH AND WATER

- Marine Toilet
- Power Bath Vent
- One-Piece ABS Tub Surround
- 6-Gallon E.I. Water Heater
- Water Heater By-Pass Valve
- Demand Water Pump
- Decorative Bath Hardware
- Medicine Cabinet
- Below Floor Low Point Drains

EXTERIOR/CONSTRUCTION

- Rubber Roof
- Fiberglass Insulation
- Gutter Rail
- Patio Awning
- Steel Bumper w/ Hose Storage
- Triple Entry Step (Except Lite Models)
- Double Entry Step (Lite Models)
- Dead Bolt Lock
- Second Entry (25RKS, 28RLS, 31DSB, 32FKS)
- Electric Rack and Pinion Slide-Out Room (Slide Models)
- 4-Retractable Stabilizer Jacks (Slide Models)
- 2-Retractable Stabilizer Jacks (Non-Slide Models)
- Straight Axles
- Rally Wheels
- Safety Glass Radius Windows
- Radius Entrance Door
- Radius Baggage Doors
- Metal Siding
- I-Beam Chassis Construction
- Stow-N-Go™ Bunk Storage (28BHS, 29TBS, 32BHS)
- Rear Garage Storage (30TBS)

Ask Your Dealer About These Coachmen Exclusive Design Features



- A** Coachmen's **SureLine™ Electrical Harness** provides color coded wiring and specific wiring schematics for easy serviceability. High quality automotive electrical connectors and autoloam protective covering make for a reliable and durable harness. The wires are grouped together and neatly tucked



- B** All Coachmen units utilize **Duratube™** full length copper LP lines with double flared ends to ensure a tight seal and years of corrosion free use. Coachmen builds quality for the long haul.



- C** The Coachmen **Even Cool™ air conditioning system** is ducted through the crowned roof, and utilizes AMOCO insulated ductwork with radiused corners to provide for maximum cooling efficiency.

OPTIONAL FEATURES

- Double Bunk w/Side Stow-N-Go Storage (30 TBS)
- Hide-A-Bed Sofa (N/A Lite Models)
- Outside Shower
- Tinted Safety Glass Windows
- Spare Tire
- Roof Ladder
- Diamond Plate Front Stoneguard
- CSA Upfit
- Fiberglass Sidewalls (Catalina Package)

Discover the Coachmen Advantages

Service After the Sale

Industry Leading Buckstopper™ Warranty – Coachmen's exclusive Buckstopper™ Limited Warranty provides one-year coverage on most parts, components and appliances. Coachmen stands behind their product and is supported by a network of over 300 service centers.

Two Year Structural & Major Components Manufacturer's Warranty – Coachmen provides a two-year structural and major components manufacturer's warranty, along with a complete written Warranty Summary Guide, for your peace of mind.

Comprehensive Owner's Information –

For your convenience we offer published materials on key equipment and options, as well as information pertaining to the function of important components. We also offer a true Trouble Shooting & Maintenance Guide for the simple answers to frequently asked questions.



Toll Free Service Numbers – Our toll free phone numbers provide you with direct access to a Coachmen RV Service Representative.

Dealer Support Tools – Coachmen makes sure that their dealers are well equipped and trained to service your needs with: Systems Manuals, PDI Manuals, Electronic Parts Catalogs, Coach-Link™ “On-Line” Electronic Dealer Communication System, and continual service training.

Service Support Center Web Site – Coachmen provides you access to key information 24-hours a day through the Internet. On-line you can find a Service Dealer Locator, Maintenance Information, Trouble Shooting Information, Product Warranty Information, Customer “E-Assistance”, Frequently Asked Questions (FAQ's), and Publications ordering dating back to 1972 models.

Priority Parts Ordering – Coachmen provides a program for overnight parts shipment in critical repair situations.

Coachmen Caravan Camping Club™

Coachmen Caravan Camping Club is your ticket to making friends for life. Share old stories and make new, in the company of fellow Coachmen Caravan members. With the purchase of a Coachmen RV, you are invited to join one of the nation's largest manufacturer sponsored RV clubs with a FREE 1st year membership.

As part of the Coachmen Caravan family, you will receive incredible membership benefits that will help to ensure your safety and enjoyment throughout your RV experiences. Enjoy your Coachmen RV more with the Coachmen Caravan Camping Club.



Leader to the Great Outdoors™

Visit our website at: www.coachmenrv.com

Coachmen Recreational Vehicle Company, LLC
 P.O. Box 30, Middlebury, IN 46540
 P.O. Box 948, Fitzgerald, GA 31750

© Copyright 2005 Coachmen Recreational Vehicle Company, LLC -
 All rights reserved Litho in USA 10/05

