

EXPLORE THE WIDE OPEN SPACES



Captiva™ TRAVEL TRAILERS BY COACHMEN
ultra-lite

Captiva
ultra-lite™

**TRAVEL TRAILERS
BY COACHMEN**

COVE SPRINGS



CANYON REDROCK



CATALINA COAST



DESIGNED FOR EASY LIVING

A huge U-dinette in the slideout is a trademark of the 245 DS that provides a spacious dining area as well as additional sleeping space. Other features such as the 6'6" tall interior ceiling height, easy to clean vinyl flooring, and thermofoil cabinet doors make the Captiva right for your family. (Shown with Summit Maple interior)

DECOR SELECTIONS

Dazzling interiors feature skillfully coordinated upholstery and window treatments. Coachmen RV chooses only top-grade fabrics wear-dated as heavy-duty. These fabrics have been tested for durability beyond 15,000 double rubs (in and out action) to simulate heavy usage. An average chair in an American home is subjected to only 3,000 double rubs per year.

FABRIC KEY: A Main B Accent



An under sink silverware drawer with removable divider tray helps to maximize interior storage space. (Select models)



An exterior auxiliary LP quick connect provides a simple connection for LP appliances like an exterior grill or a lantern. (Optional stainless steel exterior grill shown)

Captiva
ultra-lite™
TRAVEL TRAILERS
BY COACHMEN



DISCOVER THE COACHMEN ADVANTAGES

SERVICE AFTER THE SALE

TWO YEAR STRUCTURAL & MAJOR COMPONENTS MANUFACTURER'S WARRANTY – Coachmen provides a two-year structural and major components manufacturer's warranty, along with a complete written Warranty Summary Guide, for your peace of mind.

COMPREHENSIVE LIMITED WARRANTY –

Coachmen's exclusive comprehensive limited warranty provides one-year coverage on most parts, components and appliances. Coachmen stands behind their product and is supported by a network of over 300 service centers.

COMPREHENSIVE OWNER'S INFORMATION –

For your convenience we offer published materials on key equipment and options, as well as information pertaining to the function of important components. We also offer a true Trouble Shooting and Maintenance Guide for the simple answers to frequently asked questions.



TOLL FREE SERVICE NUMBERS –

Our toll free phone numbers provide you with direct access to a Coachmen RV Service Representative.

DEALER SUPPORT TOOLS –

Coachmen makes sure that their dealers are well equipped and trained to service your needs with: Systems Manuals, PDI Manuals, Electronic Parts Catalogs, Coach-Link® "On-Line" Electronic Dealer Communication System and continual service training.

SERVICE SUPPORT CENTER WEB SITE –

Coachmen provides you access to key information 24-hours a day through the Internet. On-line you can find a Service Dealer Locator, Maintenance Information, Trouble Shooting Information, Product Warranty Information, Customer "E-Assistance", Frequently Asked Questions (FAQ's) and Publications ordering, dating back to 1972 models.

PRIORITY PARTS ORDERING –

Coachmen provides a program for overnight parts shipment in critical repair situations.

COACHMEN CARAVAN CAMPING CLUB™

Coachmen Caravan Camping Club is your ticket to making friends for life. Share old stories and make new, in the company of fellow Coachmen Caravan members. With the purchase of a Coachmen RV, you are invited to join one of the nation's largest manufacturer sponsored RV clubs. As part of the Coachmen Caravan family, you will receive incredible membership benefits that will help to ensure your safety and enjoyment throughout your RV experiences. Enjoy your Coachmen RV more with the Coachmen Caravan Camping Club.



All information contained in this brochure is believed to be accurate at the time of publication. However, during the model year, it may be necessary to make revisions and Coachmen reserves the right to make all such changes without notice, including changes in prices, colors, materials, equipment and specifications, as well as the addition of new models and the discontinuance of models shown in this brochure. Therefore, please consult with your Coachmen dealer and confirm the existence of any materials, design or specifications that are material to your purchase decision.



Coachmen Recreational Vehicle Company, LLC
P.O. Box 30, Middlebury, IN 46540
P.O. Box 948, Fitzgerald, GA 31750
Visit our website at: www.coachmenrv.com

©2006 Coachmen Recreational Vehicle Company, LLC - All rights reserved. Litho in USA 11/06

FEATURES

INTERIOR APPOINTMENTS

- Summit Maple Cabinetry
- Thermofoil Cabinet Doors
- Designer Box Valances
- Mini Blind Window Coverings
- Designer Jack Knife Sofa (except 245 DS, 269 QBH)
- Pedestal Table Booth Dinette
- Stainless Steel Kitchen Sink
- High Spout Kitchen Faucet
- Silverware Drawer (235 RS, 265 RS, 269 QBH, 270 RS, 271 DS)
- Medicine Cabinet
- Skylight over Shower/Tub

SLEEPING

- Aluminum Framed Master Bed Base
- Aluminum Framed Bunk Beds
- Bed Lift System on Island Queen Beds
- Double Bed w/Bunk Above (235 RS, 269 QBH, 290 BHS)
- Bunk Beds (265 RS, 281 RBS)

APPLIANCES AND ACCESSORIES

- 3-Burner Hi Output Range Top
- Power Range Hood
- Monitor Panel
- Cable TV Jack

ELECTRICAL AND LIGHTING

- GFI Circuit
- Outside Receptacle GFI
- Patio Light
- Entrance Step Light
- Upgraded Interior Dinette Light
- Sureline™ Wiring Harness

HEATING AND AIR CONDITIONING

- Even Cool™ Insulated A/C Ducting
- 25,000 BTU Electronic Ignition Furnace
- Ducted Heat Vents
- Power Bath Vent

PLUMBING AND LP SYSTEMS

- Marine Toilet
- Double 20 lb. LP Bottles w/Auto Change-over
- Auxiliary LP Quick Connect
- 6-Gallon Electronic Ignition Gas Water Heater
- Water Heater By-Pass Valve
- Demand Water Pump
- Duratube™ Copper LP Lines

EXTERIOR/CONSTRUCTION

- Alumicage™ Construction (All Six Sides)
- Laminated Construction (All Six Sides)

SAFETY

- LP Leak Alarm
- Fire Extinguisher
- Smoke Detector
- Carbon Monoxide Detector
- Break Away Safety Switch
- Safety Glass Windows
- Summit Maple Interior: Summit Maple Cabinetry w/Maple Accents, and Laguna Maple Linoleum
- Camp White Interior: Camp White Cabinetry w/Brazilian Cherry Accents, and Laguna Dark Oak Linoleum

OPTIONS

- Camp White Interior
- Bedroom Lounge (245 DS, 269 QBH, 270 RS, 290 BHS)
- 2 Bar Stools (245 DS, 270 RS, 271 DS, 288 FKS)
- Glass Shower Door (245 DS, 281 RBS)
- Stainless Steel Portable Gas Grill*
- 3-Burner Range w/Oven
- Outside Shower
- Folding Entry Door Handle
- Tinted Windows
- Second Entrance Door (271 DS, 290 BHS)
- Stow-N-Go™ Storage Door (265 RS, 269 QBH, 290 BHS)
- Spare Tire
- CSA Upfit
- Owners Information Guide

PLATINUM PACKAGE

- (Mandatory Option) Includes:
- One-Piece ABS Tub Surround
 - Innerspring Mattress (Main Bed)
 - Bed Spread (Main Bed)
 - Microwave Oven
 - Double Door Refrigerator
 - TV Antenna
 - 12V AM/FM CD Stereo
 - 13,500 BTU Ducted Roof Air Conditioning
 - LP Bottle Cover
 - Patio Awning
 - Retractable Stabilizer Jacks w/Pads
 - Two Exterior Speakers

Pull out storage tubs are a convenient feature for storing your goods.



Exterior storage has been utilized to its fullest with Stow-N-Go™ bunk storage available on select models. The lower bunk flips up to provide a huge storage bay for your camping gear.



Rest easy in the master suite. Thoughtfully designed wardrobe and storage bays give you lots of room for your travel gear.



Captiva ultra-lite

TRAVEL TRAILERS BY COACHMEN



Spacious design in a light weight package. The 271 DS is loaded with features such as a space expanding dinette slideout, front jack knife sofa, upgraded dinette light, designer countertops and a well equipped kitchen. (Shown with Camp White interior)

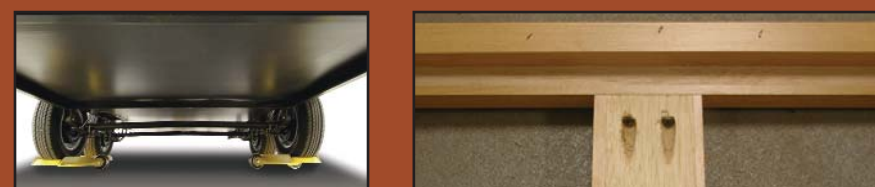
CONSTRUCTION



ROOF: R-15
SIDEWALLS: R-11.1
FLOOR: R-11.1

220 LBS.
MAXIMUM LOAD CAPACITY
100 kg
CAPACITE MAXIMALE

Aluminum framed bunk beds in the Captiva provide a class leading weight rating up to 220 lbs.



Extend your camping season with the standard fully enclosed underbelly and heated tanks. The smooth underbelly also provides for smoother air flow around the unit.

Captiva cabinetry frames are glued and screwed together for a tight fit and long lasting durability.

ASK YOUR DEALER ABOUT THESE COACHMEN EXCLUSIVE DESIGN FEATURES...



Duratube™ copper LP lines help to extend the life of your appliances. Corrosion resistant copper lines run the full length from LP source to the appliance.



Six-side aluminum framed construction provides a solid and lightweight foundation for the Captiva.



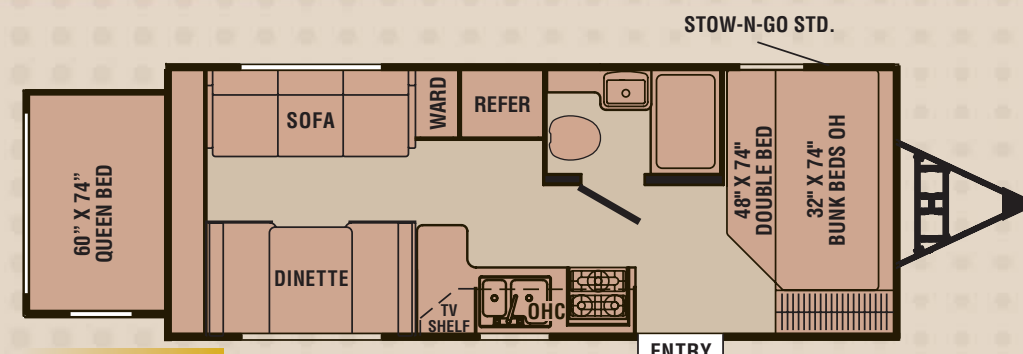
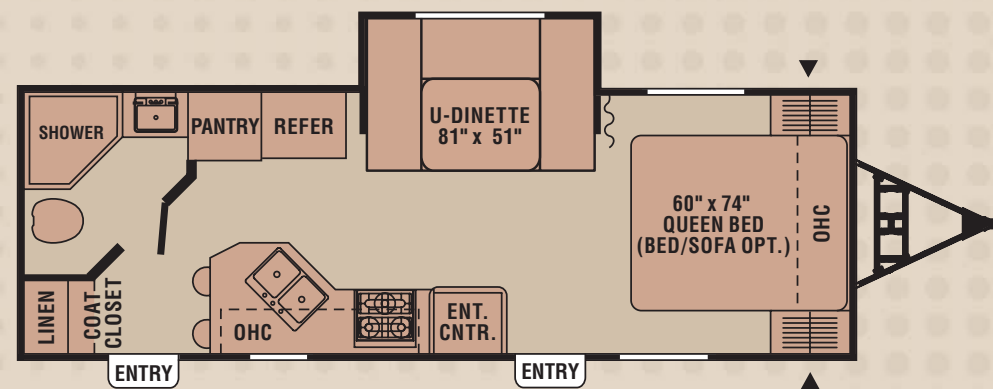
The SureLine™ custom wiring harness provides color coded wires grouped together in a protective autoloam covering. Specific wiring schematics make for easy serviceability.



Maximize your cooling efficiency with the Even Cool™ air conditioning system. Insulated ductwork with radius corners provides for smooth air flow.

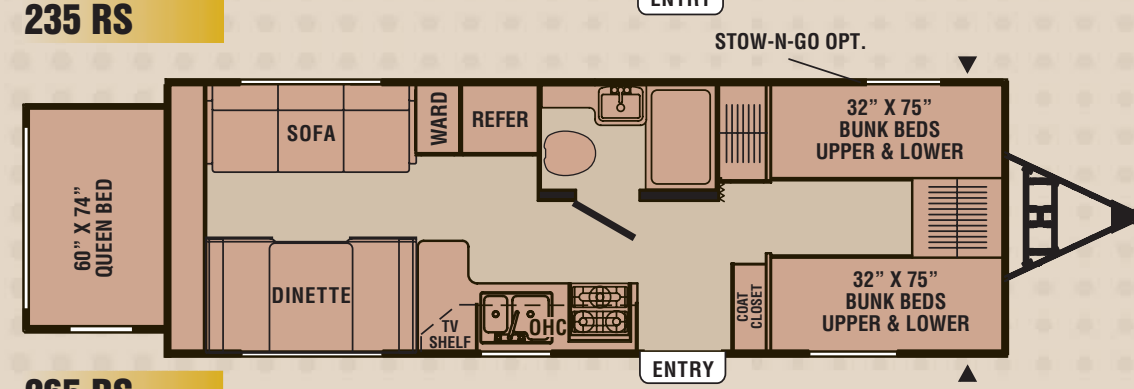
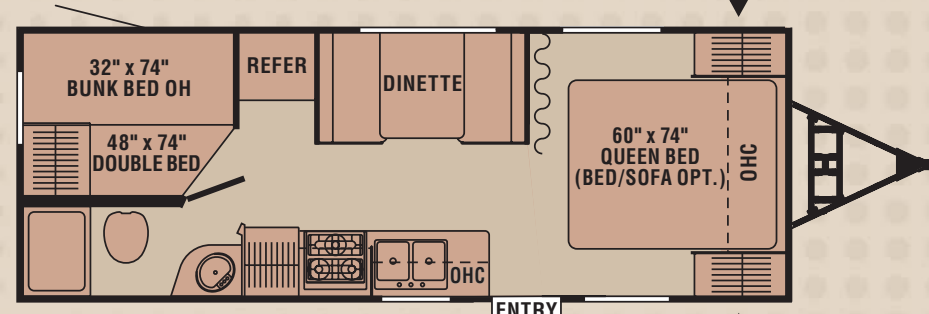
TOWING GUIDE

The popular Captiva series of travel trailers is designed with new generation tow vehicles in mind. When deciding which Coachmen is right for you, compare its weight shown in the specification chart to the towing limits of your tow vehicle. Because of the many variables, the process can be confusing. This guide is provided for your convenience as a general reference. It lists the 2006 model, engine and published maximum towing capacity. Please note: This guide does not attempt to provide all necessary information such as axle ratios, cooling systems, transmissions and any additional equipment required by the tow vehicle manufacturer to achieve the published maximum towing limits. Please be sure to verify your particular tow vehicle manufacturer's specifications. Your Coachmen dealer will be glad to help you with questions.



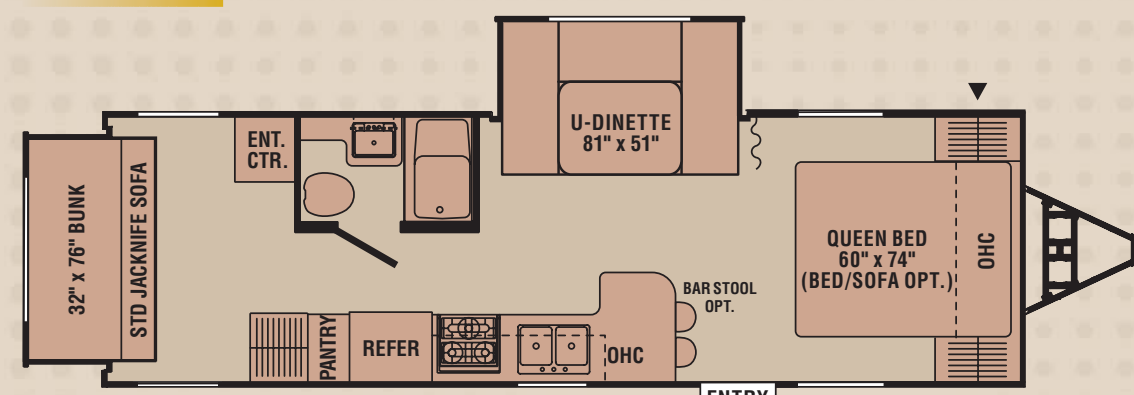
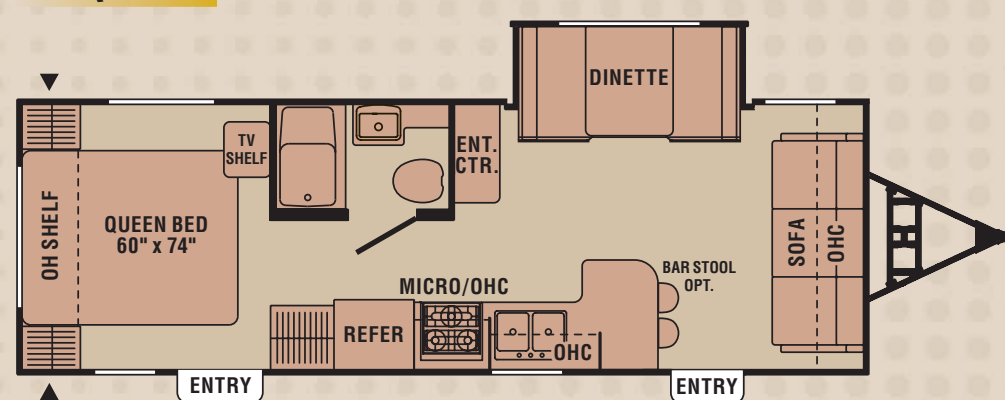
235 RS

245 DS



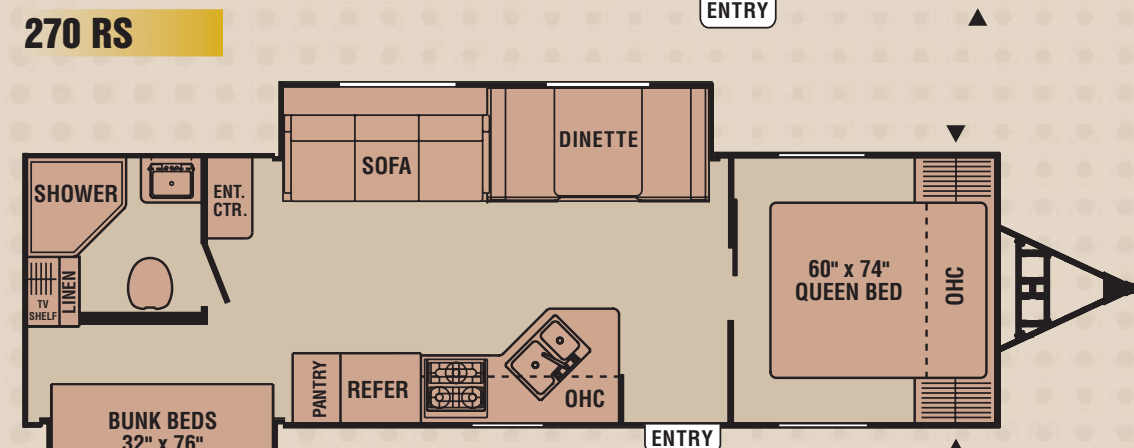
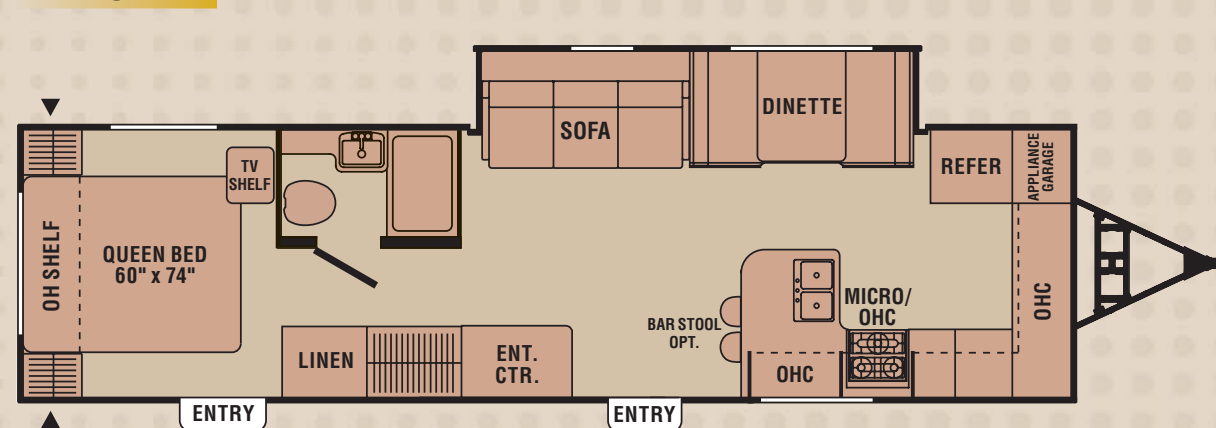
265 RS

269 QBH



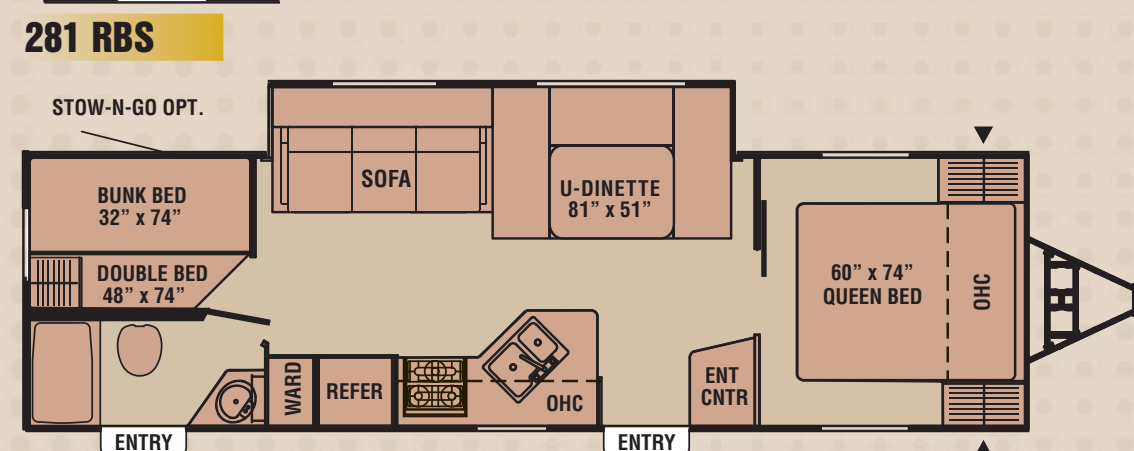
270 RS

271 DS



281 RBS

288 FKS



290 BHS

2007 CAPTIVA	235 RS	245 DS	265 RS	269 QBH	270 RS	271 DS	281 RBS	288 FKS	290 BHS
Base Weight	3,921	4,119	4,297	3,648	4,613	4,120	4,770	4,900†	4,678
Carrying Capacity (lbs.)	2,079	1,881	2,203	1,852	1,887	1,680	2,030	1,600†	2,122
Hitch Weight (lbs.)	500	680	560	470	740	510	630	700†	670
Interior Height	78"	78"	78"	78"	78"	78"	78"	78"	78"
Exterior Height (Includes Roof A/C)	10' 2"	10' 2"	10' 2"	10' 2"	10' 2"	10' 2"	10' 2"	10' 4"	10' 2"
Exterior Length	24' 3"	27' 9"	27' 5"	26' 8"	30'	27' 11"	31' 6"	33' 2"	31' 11"
Awning Size	18'	18'	18'	18'	18'	18'	14'	18'	18'
Exterior Width	8'	8'	8'	8'	8'	8'	8'	8'	8'
Sleeping Capacity	8	4	10	7	6	6	7	6	8
Fresh Water Capacity (gal.)	36	36	36	36	36	36	36	36	36
Waste Water Capacity (gal.)	32	32	32	32	32	32	32	32	32
Grey Water Capacity (gal.)	32	32	32	32	32	32	32	32	32
Water Heater Capacity (gal.)	6	6	6	6	6	6	6	6	6
LP Gas Capacity (lbs)	40	40	40	40	40	40	40	40	40
Furnace Rating (x1,000) BTU	25	25	25	25	25	25	25	25	25
Tire Size	X	X	X	X	X	X	X	X	X
Tire Size	X	X	X	X	X	X	X	X	X

Model	Engine	Tow Capacity (2WD/4WD-AWD)
BMW		
X5	All	6,000
DAIMLER CHRYSLER PICKUP		
Dakota Club Cab	3.7L V-6	4,900 / 4,700
	4.7L V-8	7,150 / 7,000
Dakota Quad Cab	3.7L V-6	4,800 / 4,600
	4.7L V-8	7,050 / 6,850
Ram 1500 Reg Cab	4.7L V-8	7,650 / 7,400
	5.7L V-8	9,100 / 8,800
Ram 1500 Quad Cab	4.7L V-8	7,300 / 7,050
	5.7L V-8	8,700 / 8,500
DAIMLER CHRYSLER SUV		
Durango	4.7L V-8	7,400 / 7,200
	5.7L V-8	8,950 / 8,650
Grand Cherokee	4.7L V-8	6,500
	5.7L V-8	7,200
Liberty	3.7L V-6	5,000 / 5,000
Commander	4.7L V-7	6,499
	5.7L V-8	7,200
FORD/LINCOLN/MERCURY PICKUP		
F-150 Reg Cab	4.2L V-6	5,700
	4.6L V-8	7,100 / 6,800
	5.4L V-8	9,900 / 9,500
F-150 Super Crew	4.6L V-8	6,800 / 6,500
	5.4L V-8	9,500 / 9,200
F-150 Super Cab	4.6L V-8	6,900 / 6,700
	5.4L V-8	9,500 / 9,300
Explorer Sport Trac	4.0L V-6	5,300 / 5,080
Ranger	4.0L V-6	6,000 / 5,680
FORD/LINCOLN/MERCURY SUV		
Expedition	5.4L V-8	8,900 / 8,600
Explorer	4.0L V-6	5,390 / 5,210
	4.6L V-8	7,300 / 7,120
Mountaineer	4.0L V-6	5,340 / 5,160
	4.6L V-8	7,240 / 7,060
Navigator	5.4L V-8	8,600 / 8,300
FORD/LINCOLN/MERCURY VAN		
E-150 PV	4.6L V-8	6,100
	5.4L V-8	6,500
E-150 CV	4.6L V-8	6,500
	5.4L V-8	6,900
GENERAL MOTORS PICKUP		
Avalanche 1500	5.3L V-8	8,200 / 7,900
Denali/Silverado SS	6.0L V-8	8,100
Escalade EXT	6.0L V-8	7,500
Sierra/Silverado		
1500 Reg Cab	4.3L V-6	5,100 / 5,000
	4.8L V-8	7,400 / 8,100
	5.3L V-8	8,400 / 8,100
1500 Ext Cab	4.8L V-8	6,900 / 6,700
	5.3L V-8	7,900 / 7,700
1500 Crew Cab	6.0L V-8	10,400 / 10,000
	5.3L V-8	7,500
	6.0L V-8	10,100 / 9,900
GENERAL MOTORS SUV		
Trail Blazer / Envoy	4.2L I-6	6,300 / 6,200
	5.3L V-8	6,600 / 6,500
Escalade	5.3L V-8	7,400 / 8,100
H1 4-Door Open Top	6.5L V-8	9,303
H1 Wagon	6.5L V-8	9,036
H2	6.0L V-8	6,700
Ranier	4.2L I-6	6,300 / 6,100
	5.3L V-8	6,700 / 6,600
Suburban/Yukon XL 1500	5.3L V-8	8,500 / 8,200
Tahoe/Yukon	5.3L V-8	6,700 / 7,500
GENERAL MOTORS VAN		
Express/Savana 1500 CV	5.3L V-8	5,900 / 6,500
Express/Savana 1500 PV	5.3L V-8	6,300 / 6,100
HONDA		
Ridgeline	3.5L V-6	5,000
INFINITI		
QX 56	5.6L V-8	9,000 / 8,900
LAND ROVER		
LR3	All	7,700
Range Rover	All	7,716
LEXUS		
GX470	4.7L V-8	6,500
LX470	4.7L V-8	6,500
MITSUBISHI		
Montero	3.8L V-6	5,000
Raider Ext Cab	4.7L V-8	6,600 / 6,449
Raider Dbl Cab	4.7L V-8	6,500 / 6,300
NISSAN PICKUP		
Titan Crew Cab	5.6L V-8	9,400
Titan King Cab	5.6L V-8	9,400
NISSAN SUV		
Armada	5.6L V-8	9,100 / 9,000
Frontier	4.0L V-6	6,500 / 6,300
Pathfinder	4.0L V-6	6,000
Xterra	4.0L V-6	5,500
PORSCHE		
Cayenne S/Turbo	All	7,716
TOYOTA PICKUP		
Tacoma Access Cab	4.0L V-6	6,500
Tundra Reg Cab	4.0L V-6	5,000
Tundra Reg Cab	4.7L V-8	7,100
Tundra Access Cab	4.7L V-8	7,100 / 6,900
Tundra Double Cab	4.7L V-8	6,800 / 6,500
TOYOTA SUV		
4Runner	4.0L V-6	6,700 / 6,400
	4.7L V-8	7,300 / 7,000
Land Cruiser	4.7L V-8	6,500
Sequoia	4.7L V-8	6,500 / 6,200
VOLKSWAGEN		
Touareg	All	7,716
VOLVO		
XC90	All	5,000

Base Weight (lbs.): The weight of the unit with no fluids, cargo, optional equipment or accessories.

Carrying Capacity (lbs.): The difference between the Base Weight and the GVWR. This is the amount of weight available for all fluids, cargo, optional equipment and accessories. The actual "loaded" weight will depend on the equipped unit and the owner's individual choice of cargo, etc.

† Estimated X = ST205/75D14C