

DAMON MOTOR COACH

CHALLENGER

2006



Surpasses your expectations but doesn't exceed your budget.

Surpasses your expectations





ns but doesn't exceed your budget.

What's in a name? In the case of Damon's Challenger motorhome, there's quite a lot. This luxurious motor coach questions the idea that luxury has to cost a fortune. And it answers with an emphatic, "No way!" With a full basement and multiple pass-through storage compartments for packing more of your favorite things... an appealing, upscale interior with lots of comfortable room... and a range of luxuries you'd normally find on much more expensive motorhomes, no one offers you so much for so little as Damon does with the 2006 Challenger.

Fresh for '06.

A new Lippert® room slideout system adds incredible roominess to the living area.

Challenger's stylish new gelcoated front fiberglass cap, plus newly designed headlights and hood, provide a fresh, contemporary appearance.

You'll appreciate the increased storage with larger wrap-around cabinets in the front overhead, new overhead cabinets in the bedroom slideouts, new cabinets over the entry door and giant pass-through storage in the full basement.

Beautifully crafted antique brass kitchen and bath fixtures, cabinet door pulls and knobs and interior lighting packages in the bedroom, bath and living room slide add to Challenger's luxurious décor.

Three elegant new décor fabrics, Cobble Hill, Jasmine Pearl and Mineral Frost, give you more decorator choices.

A windshield privacy shade keeps the light out and provides privacy.

The kitchen galley now boasts a handy cutting board for the sink.

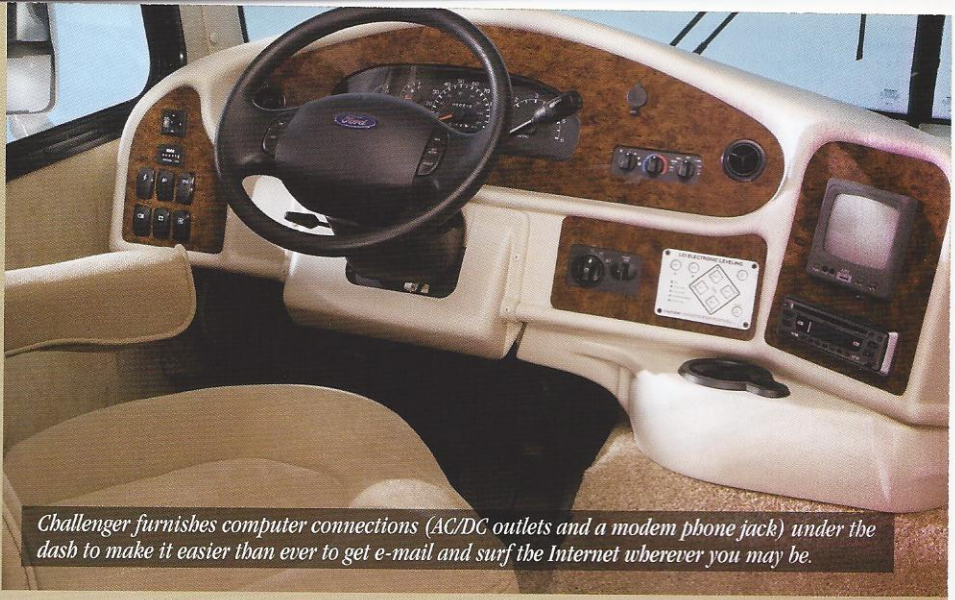
A big new 19-inch color TV is a most-wanted option in the bedroom.

In all, we've built in 20 important improvements to our 2006 Challenger. That's 20 more reasons to choose one of America's most popular motorhomes.

No one offers you so much



n for so little.



Challenger furnishes computer connections (AC/DC outlets and a modem phone jack) under the dash to make it easier than ever to get e-mail and surf the Internet wherever you may be.



The comfy bedroom offers lots of storage, plus mini blinds and a bedside TV as options.

Damon is the only manufacturer to utilize a high-quality, easy-care Carrier® roof-mounted air conditioner with a programmable remote-controlled thermostat.

Solid, all-aluminum sidewall and roof construction assure a stronger, lighter weight motorhome.

It's easy to keep your kitchen supplies organized in Challenger's huge pantry. It features adjustable shelves and roll-out drawers.

Fresh for '06.

Challenger motorhomes now come standard with heated, side-mounted power mirrors plus a convenient backup monitor system with audio.

All cabinet doors are handcrafted with rich, solid wood for durability and long-lasting beauty. And there are new overhead cabinets in the bedroom slideout and new cabinet doors in the bath and kitchen.

The new Lippert® hydraulic leveling jack system is fully automated up and down. Touchpad controls make it even easier to operate.

Optional ultra leather captain's chairs are soft and comfortable, plus they wear longer than traditional cloth chairs.



A spacious pantry with sliding drawers offers convenience and more storage space.

A skylight showers the bathroom with sunlight. A beautiful handcrafted wood medicine cabinet and mirror add luxury.

Luxury is always standard.

Now comes the fun part — choosing your favorite fabrics, wood styles, floor plans and other options. So design away! And have fun!



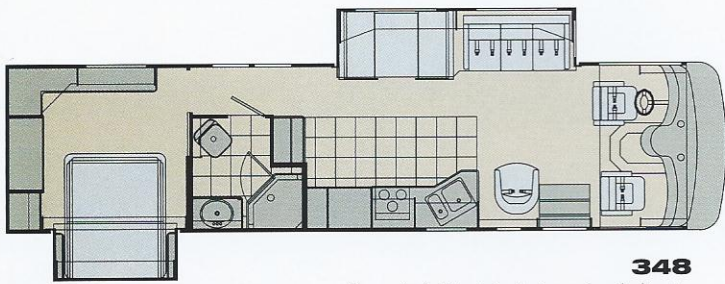
Deluxe Graphics



Beige Metallic

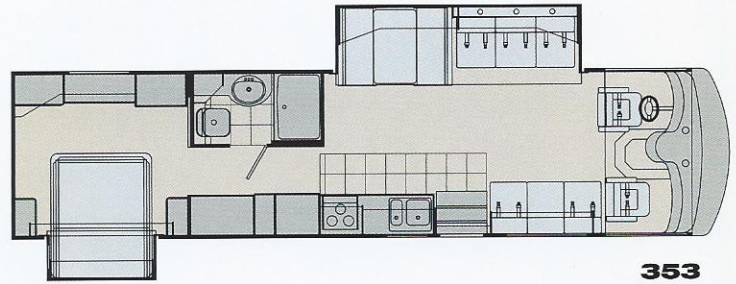
Paint

Challenger's deluxe exterior graphics packages feature a bold and contemporary design with clean graphics and a new optional paint style for 2006.



348

Queen bed. Private bath. Large booth dinette.

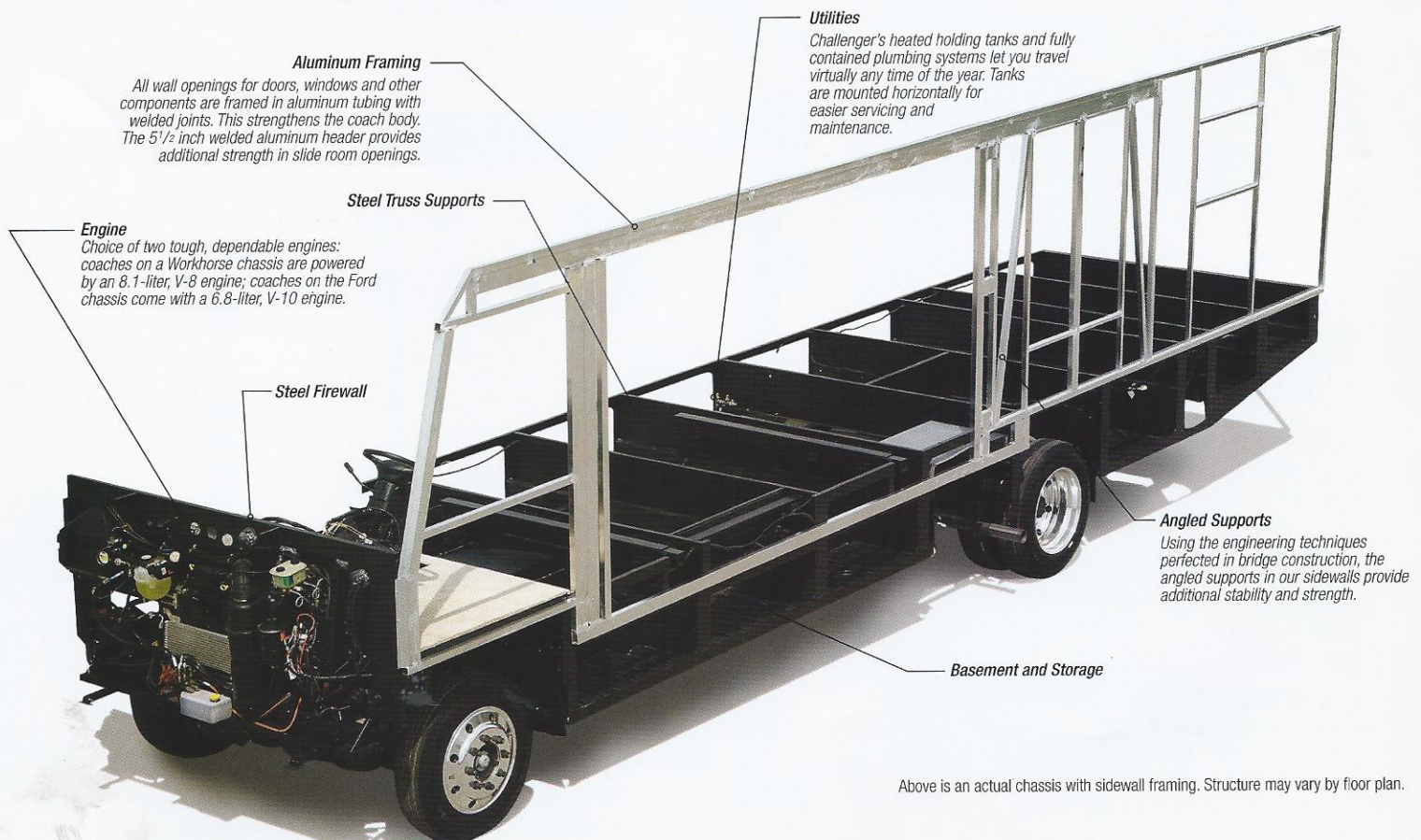


353

Two sofas. Living room slideout. Private bath.

So is quality construction.

Quality construction starts with the chassis. And Challenger uses only the finest: either a robust, rugged Ford® or Workhorse® chassis, depending on the floor plan you choose.



Aluminum Framing

All wall openings for doors, windows and other components are framed in aluminum tubing with welded joints. This strengthens the coach body. The 5 1/2 inch welded aluminum header provides additional strength in slide room openings.

Steel Truss Supports

Engine

Choice of two tough, dependable engines: coaches on a Workhorse chassis are powered by an 8.1-liter, V-8 engine; coaches on the Ford chassis come with a 6.8-liter, V-10 engine.

Steel Firewall

Utilities

Challenger's heated holding tanks and fully contained plumbing systems let you travel virtually any time of the year. Tanks are mounted horizontally for easier servicing and maintenance.

Angled Supports

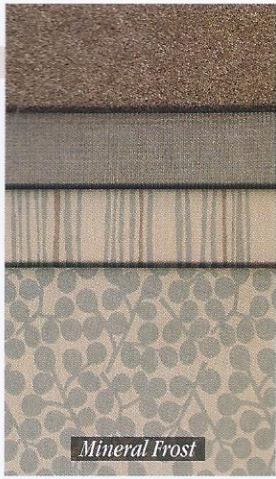
Using the engineering techniques perfected in bridge construction, the angled supports in our sidewalls provide additional stability and strength.

Basement and Storage

Above is an actual chassis with sidewall framing. Structure may vary by floor plan.



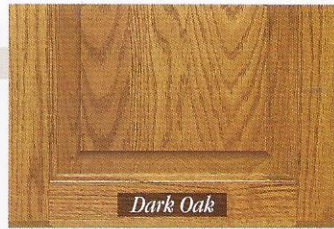
Cobble Hill



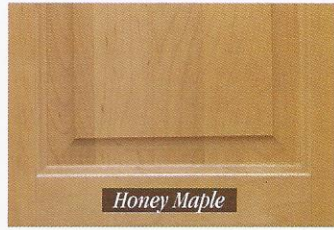
Mineral Frost



Jasmine Pearl



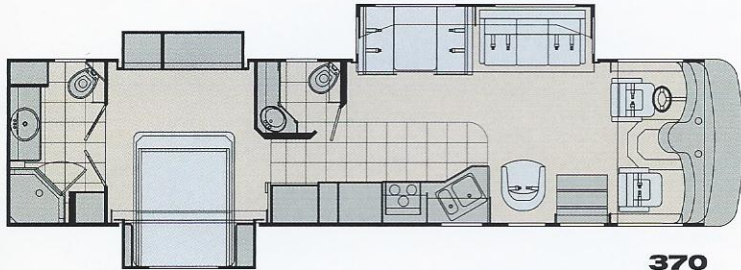
Dark Oak



Honey Maple

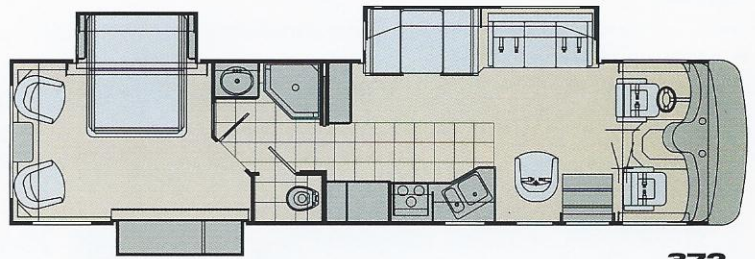
Décor

Challenger offers several discriminating décor packages. So put your interior decorating skills to work (you won't go wrong with any package).



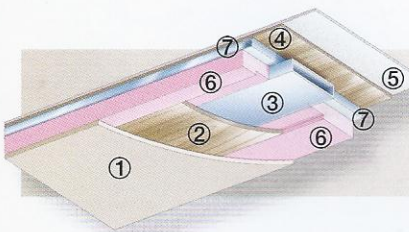
370

Living room slideout. Dual bedroom slideouts. Large dinette. Private bath.



372

Living room slideout. Dual bedroom slideouts. Private neo-angle shower.



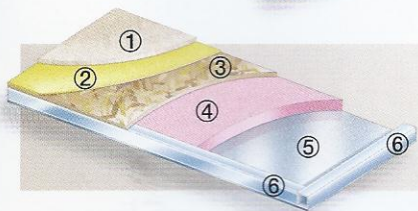
ROOF

- ① Padded ceiling
- ② Luan (wood)
- ③ Air conditioning duct
- ④ Luan (wood)
- ⑤ TPO roofing
- ⑥ Insulation
- ⑦ Aluminum frame (tubing)



SIDEWALLS

- Sidewalls are five layers thick, consisting of:
- ① Interior panel
 - ② Insulation
 - ③ Sidewall Mende board (inside)
 - ④ Sidewall Mende board (outside)
 - ⑤ Aluminum frame (tubing)
- Walls are also vacuum-bond laminated for added strength and rigidity.



FLOOR

- ① Carpet
- ② Padding
- ③ Structurwood® floor
- ④ Insulation
- ⑤ Galvanized metal
- ⑥ Steel frame (tubing)

**Damon Value by Design.
It's our driving force.**

If it seems like most of our motorhomes are loaded with features, you're right. It's part of our "Value by Design" way of doing business. You see, we become more efficient when we offer more of your favorite amenities standard. Construction is more streamlined. And you get more motorhome. For less. This is just one of the ways we design more value into every motorhome we manufacture.

In addition, unlike many of our competitors who produce motorhomes, towables and other products, the sole focus of our business is Class A motorhomes. We believe this simplifies our manufacturing process and helps us focus on doing a single job exceptionally well. Doing that job well also means using only high-quality materials, components and state-of-the-art construction techniques. All told, it's what we call, "Value by Design."

Value by Design. It's more than a slogan; it's our way of delivering more motorhome for your money.

Challenger standard specifications and features

BATHROOM

Vinyl tile flooring
Shower with surround
Shower door
Skylight in shower
Power vent
Foot-flush toilet
Wallpaper border

BEDROOM

Standard mattress
Bedspring and pillow shams with pillows
TV area and jack
Pin-up lights
Overhead cabinet in bedroom slideout
(N/A: 370)

CHASSIS

Leveling jacks with touchpad controls
Front and rear mud flaps
Stainless-steel wheel liners
Trailer hitch (5,000 tow lbs./500 tongue lbs.)
Emergency start circuit
Under-hood light

Automatic transmission with overdrive
Layer of neoprene vibration dampener

COCKPIT

Vinyl covered dash with pod
Electronically controlled dash air conditioning
AM/FM/CD player (single disc, in-dash)
Cruise control
Tilt steering wheel
Map lights (single pancake)
Dash fans
Tinted wraparound windshield
Windshield privacy shade
Side-mounted power mirrors
Reclining swivel captain's chairs
3-point, wall-mounted seat belts
Sun visors
Backup monitor system with audio
Drink holders

ENTRY

Electric exterior entrance step
Battery access in stairwell

EXTERIOR

Fog lights
Wide-body design
Radius-cornered domed TPO roof
Rear ladder
Aerodynamic front and rear fiberglass caps
Side-mounted patio awning
Side-mounted awning over slideout(s)
White smooth fiberglass exterior with deluxe graphics
Locking exterior storage doors
White-trimmed, radius-topped entrance door with deadbolt lock and black-trimmed, clear window with shade and valence
Black-framed, radius-corner slider windows
Patio light
Easy-to-clean, lighted, rotocast storage compartments
Full basement pass-through storage
Gas spring-supported storage doors

KITCHEN

Refrigerator: flush-mounted, double-door
Refrigerator: raised-panel, hardwood front (oak or honey maple)
3-burner range and oven
Folding range cover
Microwave oven
Lighted power range hood
Monitor panel with LPG readout
Sink cover
Pantry
Solid-wood, raised-panel cabinet doors through-out (upper and lower)
Vinyl tile flooring
Booth dinette
Mini blinds
Wallpaper border
Ball bearing drawer guides

LIVING AREA

Barrel chair(s) (N/A: 353)
Sofa bed (passenger side) (353 only)
Hide-a-bed
Lambrequin window treatments
Day/night shades (except kitchen)
100% nylon carpeting with stain treatment and padding
25-inch color TV in cockpit overhead with full-function remote, antenna booster and jack
Decorator mirror
Soft-touch padded vinyl ceiling

UTILITIES

Air conditioner: 13,500-BTU ducted central (front)



Challenger's Carrier® roof-mounted air conditioner is run by this programmable remote-control thermostat.

Air conditioner: 13,500-BTU ducted central (rear)
Remote thermostatically controlled air conditioning

Furnace: 35,000-BTU electronic ignition, floor-ducted

Water heater: 6-gallon gas with electronic ignition

Water heater bypass kit

Pre-wired for generator with auto change-over

Converter: 60-amp

Dual 6-volt auxiliary batteries

Battery disconnect

50-amp, 120-volt service

Exterior GFCI receptacle

Enclosed heated potable and holding tanks

Telephone hookup

Cable TV/satellite hookup

Pre-wired for roof-mounted satellite dish

Carbon monoxide detector, LP gas and smoke detectors

POPULAR OPTIONS

Upgraded innerspring mattress

19-inch color TV in bedroom

Computer tray on passenger side

Driver's door with power window

Corner-mounted power mirrors with heat

Ultra-leather, reclining swivel captain's chairs

Partial paint package

Upgraded gelcoated sidewall

Dual-pane windows

Refrigerator: large flush-mounted, double-door

Fantastic® power vent

Euro recliner with leather seating surface and ottoman (N/A: 353)

Video package (VCR/DVD player and control center)

Air conditioner: 15,000-BTU ducted central upgrade (front)

Generator: 5.5 kW Onan® Marquis Gold™

Exterior shower



A cavernous cargo area lets you bring everything you'll ever need on the road.

WEIGHTS AND MEASURES	348	353	370	372
Chassis	Workhorse/Ford	Workhorse/Ford	Workhorse/Ford	Workhorse/Ford
Wheelbase	228	228	242	242
Overall Length	36'8"	36'8"	37'7"	38'1"
Overall Width	101"	101"	101"	101"
Overall Height with AC	12'0"	12'0"	12'0"	12'0"
Std. weight (approx. lbs.)	17547/17127	17856/17164	18097/17597	17855/17747
GVWR	20.7K/20.5K	20.7K/20.5K	22K/22K	22K/22K
GCWR	26K/26K	26K/26K	26K/26K	26K/26K
Fresh water (approx. gal.)	75	75	75	75
Grey water (approx. gal.)	50	50	90	50
Black water (approx. gal.)	50	50	50	50
LP (lbs.)	103.5	103.5	103.5	103.5
Sleeping capacity	4	5	4	4
Exterior storage capacity (cu. ft.)	167	160	168	172
Interior Drawers	22	20	20	17
Interior Drawer capacity (cu. ft.)	14	11	15	10
Fuel capacity (approx. gal.)	75	75	75	75

RVIA



Jerry's Trailers & Campers
2601 South 13th St.
Norfolk, NE 68701
(402) 371-1306

D
DAMON
MOTOR COACH

P.O. Box 2888 • Elkhart, IN 46515
Customer Service: 800-860-3812
Sales Department: 800-860-5658
www.DamonRV.com

THOR
AMERICA'S BEST RV VALUE

DC 8/05 © 2005 Damon Motor Coach Printed in U.S.A.

Due to constant product improvements, the specifications, component parts and standard/optional equipment are subject to change without notice or obligation. Product photography or diagrams may show equipment that is optional. Damon Motor Coach reserves the right to make changes in prices and models and to discontinue models without notice or obligation. Components, parts or chassis may have been manufactured at times other than the model year indicated. All capacities are approximate and dimensions are nominal. All dry weights are based on standard model features and do not include optional features or equipment. Various RV components and features may differ to conform to local codes. Due to EPA environmental restrictions, engine power and torque ratings may change mid-year.