

CHALLENGER

2006

Let Your
Journey Begin...



CHALLENGER



Whether on the road or parked at your favorite vacation retreat, Challenger has been designed to be completely roadworthy and fully residential, all in one beautiful product. From its streamlined and aerodynamic profile to its smooth fiberglass aluminum framed sidewalls and dynamic graphics package, Challenger makes a sleek statement that tells the world you're ready for the good things in life.

Experience the Pleasures of Life...Take the Challenge!

Designed For Today's Lifestyles...

At Challenger, experienced engineers and designers blend the latest technology and materials with time-tested methods of quality construction, interior cabinetry, and furniture craftsmanship to create one of the finest recreational vehicles in the industry. Inside, every room is designed down to the smallest detail to give you maximum comfort and ease of maintenance. When it comes to livability, each room in the Challenger is planned for your total comfort.

The Challenger's 29RKP floor plan features a large kitchen with ample countertop space and plentiful overhead cabinets. Shown here in the Monte Carlo decor, this plan also offers large windows for a light and airy atmosphere throughout. Perfect for cooks who want to be part of the conversation.



Challenger's 32TKB floor plan, shown above in the warm, rich tones of our Autumn decor, offers an elegant living and dining area. Ample lighting, attractive valances and day-night shades help create the atmosphere for your easy life in the Challenger.



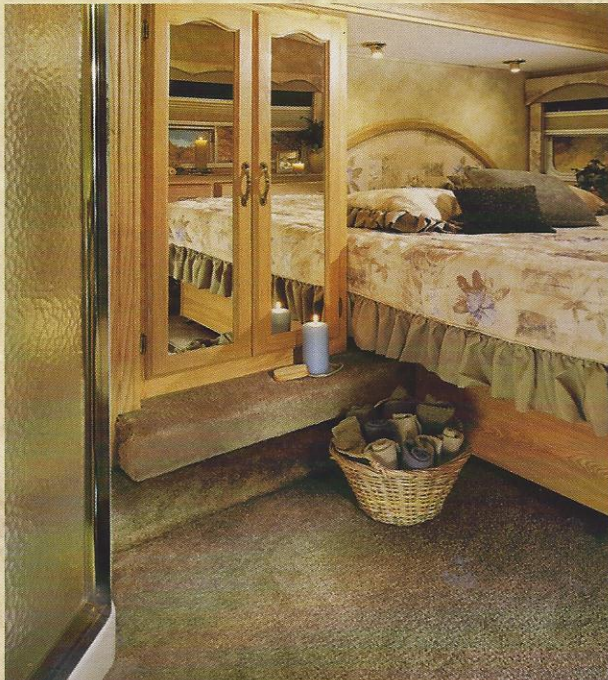
Features shown are not available on all models.



Challenger bedrooms feature 60" x 80" queen-size beds, extra-deep dresser drawers, and ample space in the beautiful mirrored wardrobe. Notice the cabinet doors which can be closed to conceal the entertainment center components.

Challenging You to Live Different!

Single-level bedroom and bathroom master suite. No step up from the bathroom to the bedroom.



The 34 TBH, shown here in Saratoga Sage decor, offers a TRUE second bedroom with an extra entertainment center and spacious cabinetry across from a full-size Hide-a-bed sofa. This multi-purpose room can be a study, den, office, or play center. Notice the upper bunk—there's always room for one more.



Features shown are not available on all models.

2006

CHALLENGER

Standard Features

- Patio awning
- Screwed cabinetry with Lumber-core stiles (not stapled and no paperboard)
- Endura™ residential raised-panel cabinet doors (upper) with 10-year warranty
- Freestanding dinette with four high-back chairs
- High-rise kitchen faucet
- Large double door refrigerator
- Six panel refrigerator front
- Spacemaker microwave oven
- Skylight in bathroom
- Garden shower with glass shower door
- Foot flush toilet
- Residential queen-size bed (60" x 80")
- Innerspring mattress
- Bedspread and shams
- Deluxe Hide-a-bed sofa
- Floor-ducted heat
- TV antenna
- Hydraulic pump override
- Dynamic exterior graphics
- Aluminum-framed laminated sidewalls
- Smooth gel-coat Filon™ fiberglass exterior
- Easy-glider flush-floor slide room
- Water heater bypass
- Day/night shades
- LP leak detector
- 3-burner range with oven
- Monitor panel
- Power range hood
- White clamp-ring windows
- Easy-to-open triple steps
- Large radius entry door
- Cable & Satellite-ready TV hookup
- Telephone jack
- Stabilizer jacks
- Easy-to-lube axles
- Gutters with rain spouts
- 15,000 BTU A/C with remote control
- Rear ladder
- Power front landing jacks
- Ceiling paddle fan with light
- Bookshelf AM/FM stereo with CD player
- One-level master bedroom suite (No step up from bathroom to bedroom)
- Easy flush system for waste tank
- 50-amp service with detachable power cord
- 16" tires



A glass-panel garden shower, extra-large medicine cabinet with mirrors hinged for three-way viewing, decorator faucet, generous counterspace, overhead vanity lighting, a private commode area—all the features of a luxury bathroom at Challenger's moderate price point.

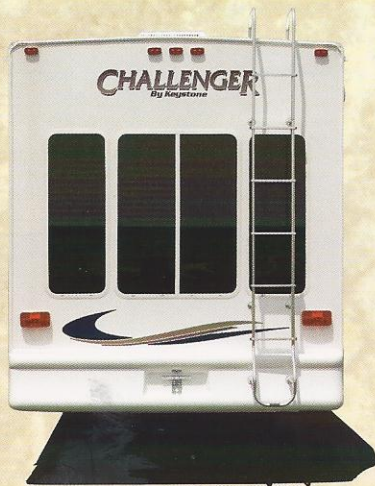
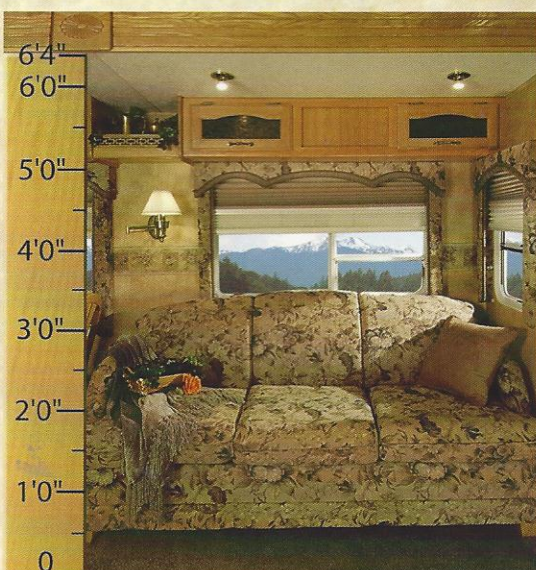
- Therma-Shield™ tank enclosure
- Shock absorber mounting plates
- 12-gallon gas/electric water heater with DSI
- Tinted safety glass windows
- Folding entry handle

Popular Options

- Exterior shower
- Spare tire and carrier
- Heat strips for holding tanks
- Security light(s)
- Wire and brace for 2nd A/C (A/C not included)
- 13,500 BTU A/C in bedroom (non-ducted)
- Barstools (2) (29RLS, 34TLB only)
- End table (N/A on 29RKP, 32TPK and 34TBH)
- Desk chair (32TPK, 34TLB, 35 RLQ only)
- Island kitchen base (32TKB only)
- Booth dinette (Models 29RKP, 29RLS, 34TBH, 34TLB, 36TDB only)
- Sink cover
- Water purifier
- Garden tub in place of shower
- Washer/dryer prep
- Electronics package (27" TV and DVD)
- Recliner/glider lounge chairs
- Leather Euro-Style Recliner
- Carbon Monoxide Detector*

*Mandatory Option Options above n/a on all models

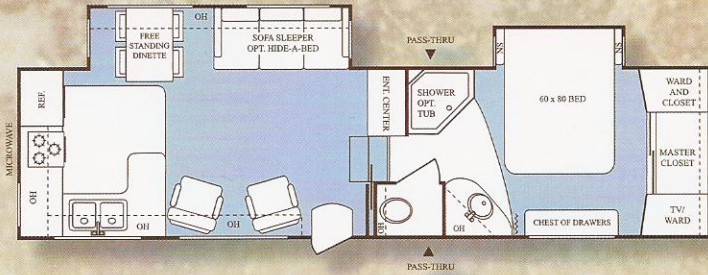
Challenger's fifth wheel sofa and dinette slideroom is a full 64" high.



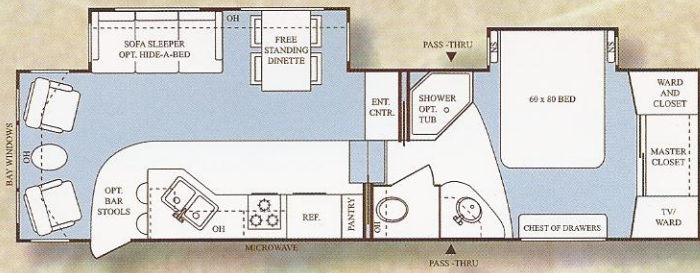
Automotive-style high-gloss bumper

CHALLENGER

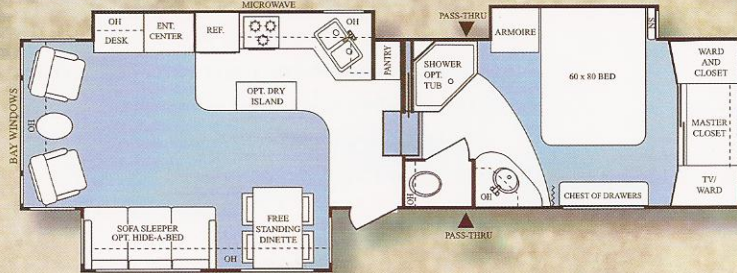
29RKP FW



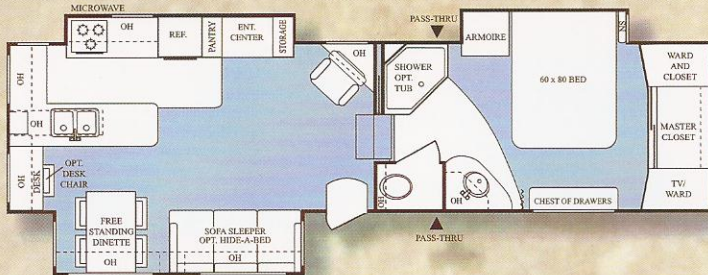
29RLS FW



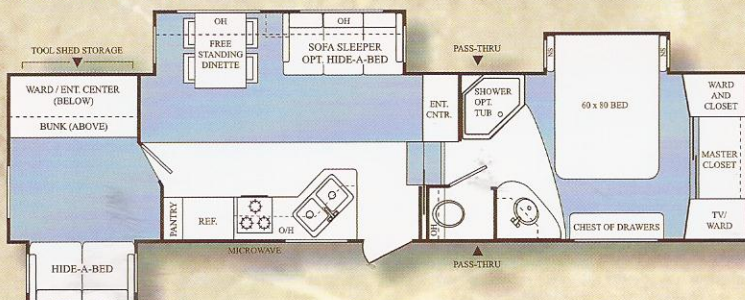
32TKB FW



32TPK FW



34TBH FW



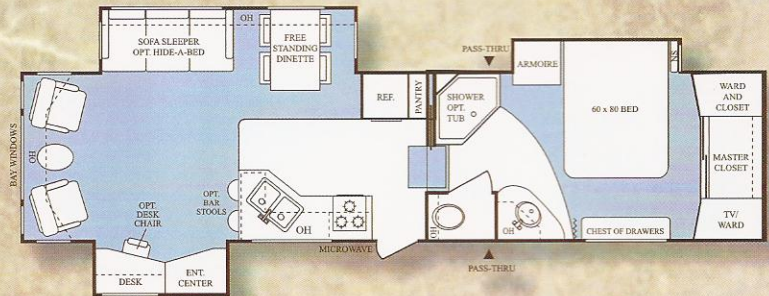
THERMA SHIELD

TANK ENCLOSURE

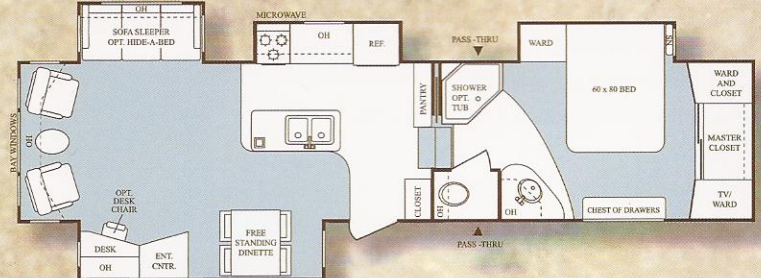
• ENCLOSED • INSULATED • HEATED • HOLDING TANKS •

Therma Shield™ Tank Enclosure is a new advancement to keep your fresh, grey, and waste water tanks enclosed, insulated, and heated.

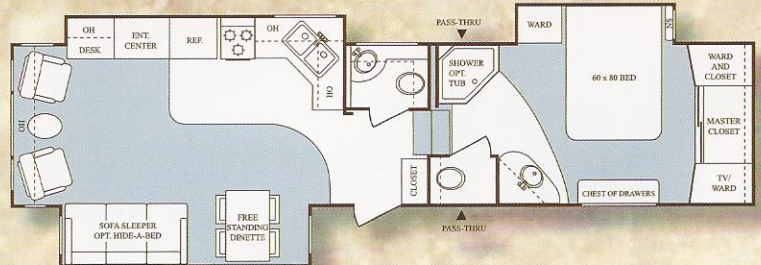
34TLB FW



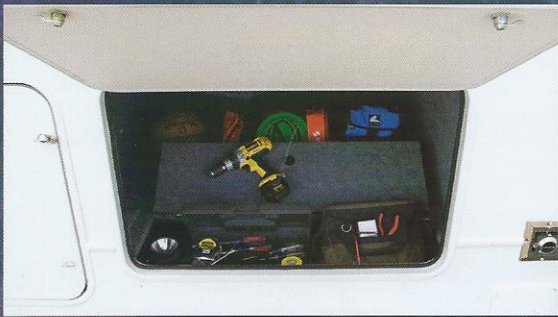
35RLQ FW



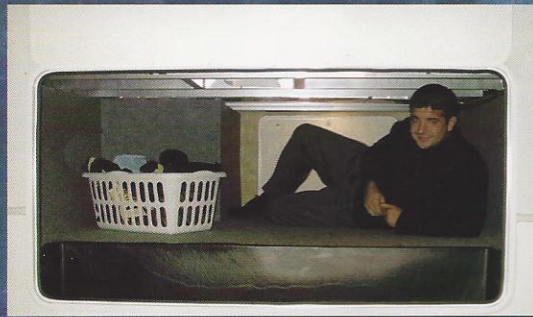
36TDB FW



Features shown are not available on all models.
All lounge chairs/recliners and end tables are optional.



A steel toolbox with lid, recessed in the floor of the storage bay, is close to the door for easy access.



Challenger offers you an amazing 130 cu.ft. of unobstructed, felt-lined, exterior-access storage space. While you might choose different cargo, our photo shows dramatically how much height and depth you'll have for even the bulkiest camping and outdoor gear.



16" tires and easy-to-lube AL-KO™ axles are a standard in the Challenger fifth wheel line.



Challenger's exterior storage doors are extra thick with radius corners for added protection and durability.



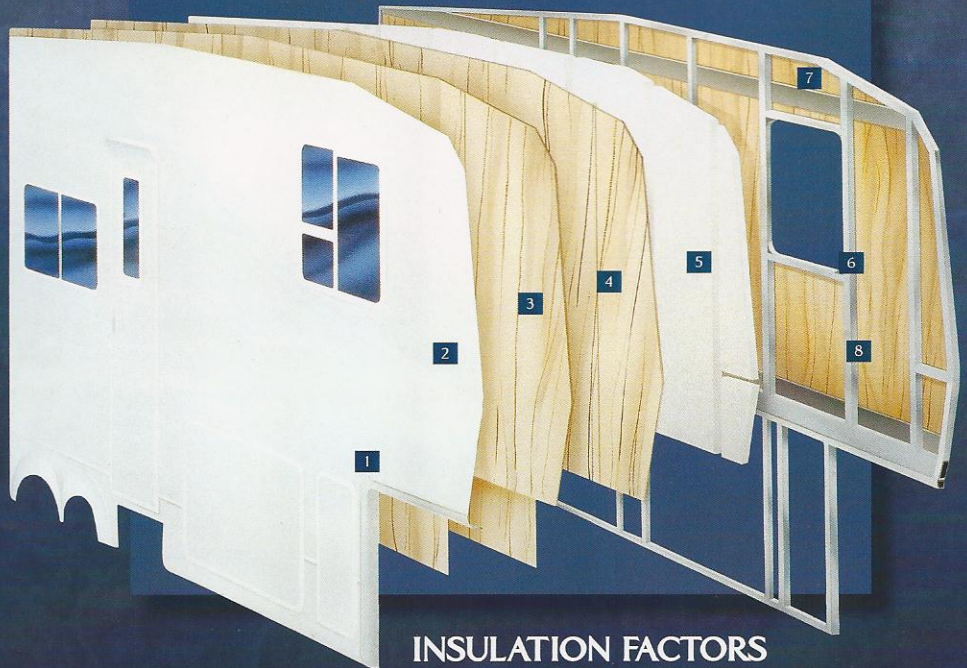
Challenger's dual battery and hydraulic pump utility compartment. (Batteries not included)

Construction

Welded 2" aluminum framing is at the heart of our 5-layer sidewall construction, engineered to make your Challenger strong and durable while creating a fifth wheel that is easier to tow. Previously found only in fifth wheels at a much higher price point, Challenger's structural integrity assures you of strength, superior insulation, and durability for many years to come.

Sidewalls

1. One-Piece High-Gloss Fiberglass Gooseneck Corner Wraps
2. Gel-Coated Filon Fiberglass
3. 1/8" Lauan Wood Backer
4. Second Layer 1/8" Lauan Wood Backer w/Staggered Seams
5. Solid Block EPS (Expanded Polystyrene) Insulation
6. Radius Window Corner Blocks
7. Metal Backing Strips (EGS -Electro-Galvanized Sheet)
8. 2" Welded Aluminum Sidewall Studs



INSULATION FACTORS

Walls - R-9 • Roof - R-10 • Floor - R-17

All R factors are estimated from composite ratings

For More Information, Contact Your Challenger Dealer:

Jerry's Trailers & Campers
2601 South 13th St.
Norfolk, NE 68701
(402) 371-1306

CHALLENGER

is a product of:  **Keystone RV Company**

2642 Hackberry Drive, Goshen, IN 46526
(574) 535-2100

www.keystone-challenger.com



Go RVing
Life's A Trip

Product information is as accurate as possible at the time of publication. Features, floorplans, and specifications are subject to change without notice. Some features listed and shown are optional. K-100-244 ©2005 Keystone RV Co. Image Litho U.S.A.