

2006 CARRIAGE

COMPASS C2

LET YOUR COMPASS GUIDE YOU





35SLQ IN BASIL DECOR

WWW.CARRIAGEINC.COM



IT'S HOW YOU KNOW IT'S A CARRIAGE

Some important points to consider when shopping the competition.

“Useability” – How much cabinet storage is available? How much closet space is available?

“Reliability” – What is the track record of the product? Talk to past and present customers. Look at construction over, under and inside everything.

“Serviceability” – Who do you call if you have a problem or questions? Where do you go to get routine service done or to have a problem fixed?

“Warranty” – How long is the warranty? Will the warranty expire if I live in it full time?



COMPASS STANDARD MERIT OAK

OPTIONAL NATURAL MAPLE

OPTIONAL HONEY MAPLE

COMPASS MODEL 30RLS IN CINNAMON DECOR

2006 CARRIAGE COMPASS C2



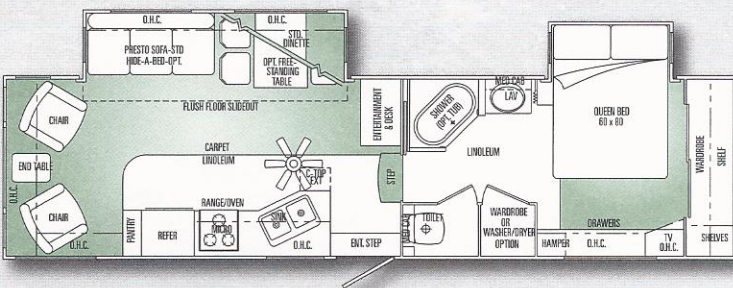
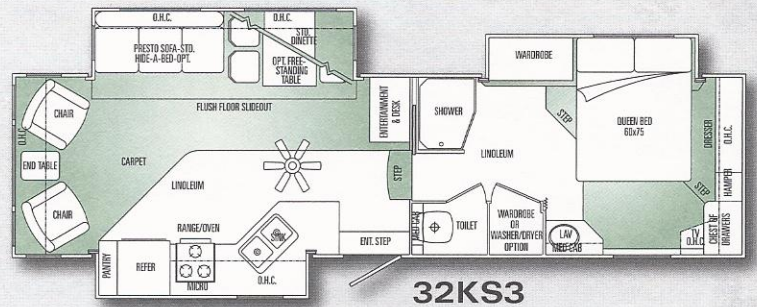
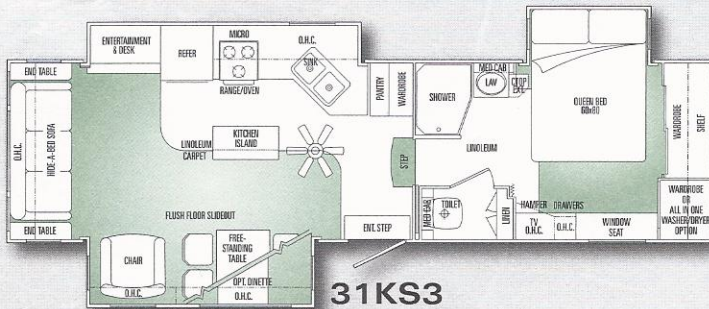
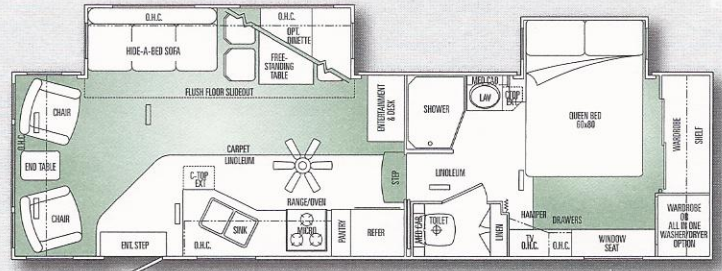
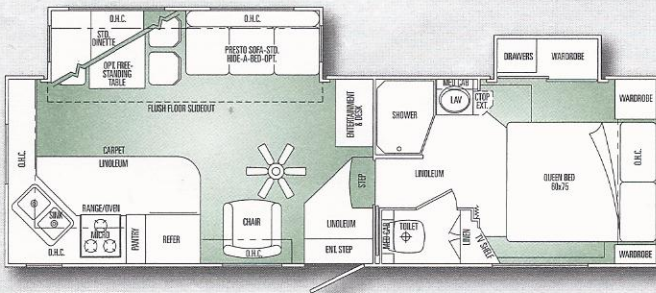
**DINETTE BENCH SEATING
WITH STORAGE**

WWW.CARRIAGEINC.COM

Carriage

COMPASS C2

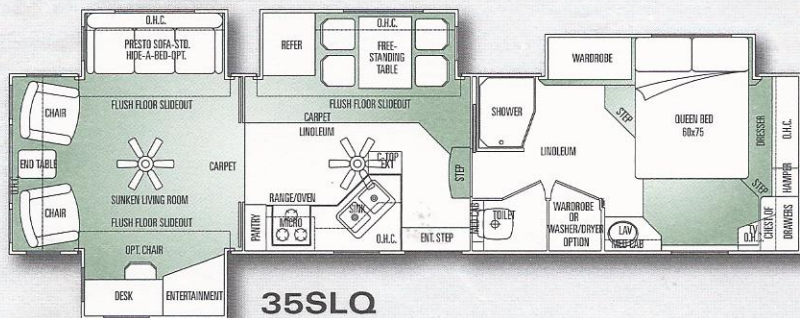
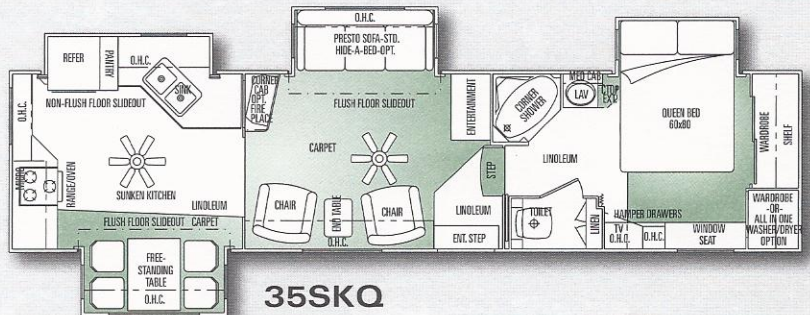
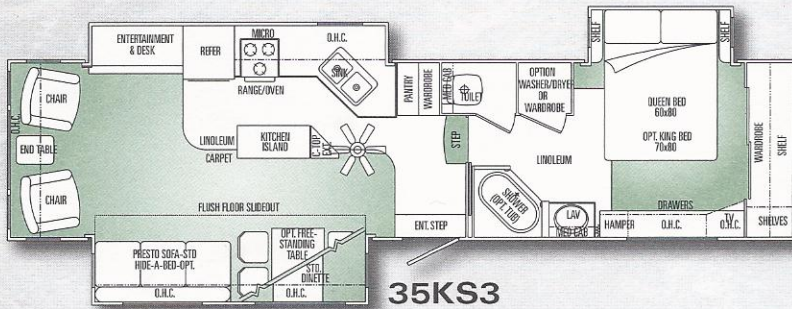
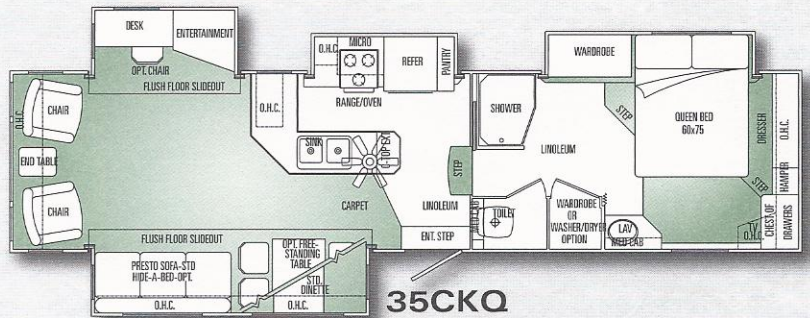
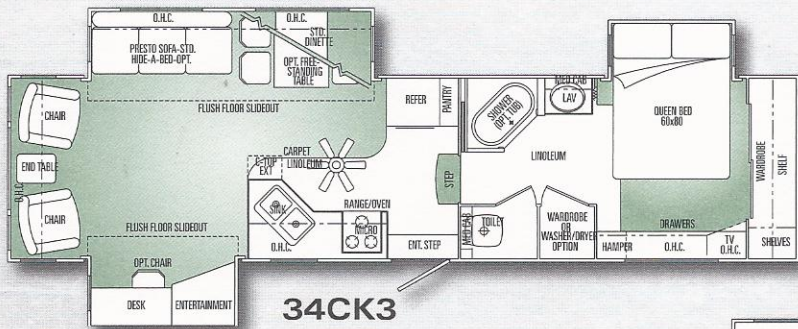
2006 CARRIAGE COMPASS FLOORPLANS



Carriage

COMPASS C2

2006 CARRIAGE COMPASS FLOORPLANS



2006 CARRIAGE COMPASS SPECIFICATIONS

STANDARD PACKAGES

"BEST BUILT" PACKAGE

- Front snap pins
- Rear ladder
- Black tank flush
- Rear second basement (60 cubic feet)
- 8 cu.ft. Refer
- Insulated & enclosed underbelly
- Extended pin box

"LUXURY" PACKAGE

- 22" Oven/Range
- 24" Samsung television
- Samsung AM/FM/CD/DVD Home Theatre System 5.1 w/Subwoofer
- Slide-out pantry drawers
- Swivel rocker w/ Rock-N-Lock
- Towel/robe hooks on backside of stool room door
- Decorative mirror w/decorative coat hooks

INTERIOR

STANDARD FEATURES

- Residential quality carpet w/pad throughout
- Armstrong® Tuffguard linoleum @ kitchen & bath & entrance door
- Merit oak cabinetry
- Oak raised panel lower cabinet doors
- Fluted glass cabinet doors in kitchen, living room, dining room, and bedroom overheads
- Brushed nickel handles on all cabinet doors/drawers
- Designer window treatments throughout w/night shades
- 12V incandescent ceiling lights
- Numerous well placed 110V outlets throughout
- Oak slide-out fascia w/fabric inlay

OPTIONS

- Natural Maple cabinetry
- Honey Maple cabinetry
- Central vacuum system
- Fireplace

SYSTEMS

STANDARD FEATURES

- 50 amp service
- Marine power cord
- AC/DC power converter w/charger (55 amp)
- Floor-ducted forced air furnace w/electronic ignition (27'-32') 30,000 BTU
- 35,000 BTU (33' - 35')
- 13,500 BTU ducted air conditioner - Carrier™
- 10 gal. gas/electric water heater w/DSI
- Water heater by-pass
- Dual 30# LP gas bottles w/auto change over

- Double battery box compartment
- Full systems monitor panel
- High output demand fresh water system
- Large capacity holding tanks, fresh, black & gray
- Holding tank evacuation system
- Holding tanks: heated & insulated w/fully enclosed underbelly
- Fresh water tank - 60 gallon
- Winterizer kit
- Upgrade 12V interior light switches
- TV jack in living room
- Prep for electric awning
- Ceiling fan
- Black water tank flush kit

OPTIONS

- 15,000 BTU ducted air conditioner - Carrier™
- Fantastic® vent w/wall switch
- Washer/dryer prep (N/A F27RKS)

CONSTRUCTION/SAFETY & RUNNING GEAR

- Aluminum superstructure (heavy gauge welded)
- 1 1/2" x 2 1/2" Aluminum welded main floor
- Roof decking 1/2"
- 5" aluminum trussed roof on 16" centers
- Fully insulated 2" slide-out floors (R8)
- Double squeegiee around slide-out rooms
- Heavy duty rack & pinion slide-out system w/flush floor
- Aluminum constructed sidewalls w/built-in vapor barrier & full Fiberglass insulation glued in place
- Extra bracing @ all stress areas
- Owens-Corning® insulation floors, walls & roof
- Fully painted frame
- 10" box frame (27-30')
- 12" box frame (31-35')
- Heavy duty leaf spring suspension
- Dual axles w/high GAWR rating
- Adjustable spring hangers
- 16" tires & wheels
- ST235/80R16 "E" Tires
- Stainless center caps & lug nuts
- Heavy duty four wheel electric brakes (2" x 12")
- Break-away switch
- Shock absorbers
- Stainless center caps & lug nuts
- Stabilizer jacks (1 pair)
- 12V power front jack w/snap pins
- Smoke detector
- L.P. leak detector
- CO detector
- GFI electrical circuit protection
- Spare tire - crank up
- Hitch Ext. Adapter @ pin box

OPTIONS

- Raise axles for 4-WD truck

- Nev-R-Lube axles
- Aluminum wheels

EXTERIOR

STANDARD FEATURES

- Automotive style bumper
- Safety glass windows (radius) in all units
- GL20 tinted windows
- Radius designed entrance door
- "Big Easy" triple entrance steps w/non-slip grips (except F27&F30)
- One piece TPO vinyl roof w/3" crown
- Awning rail w/gutter on both sides w/down spouts
- 12V patio light & step light w/wall switch
- Lights in outside storage compartments
- Courtesy light @ FW hitch
- Courtesy light @ sewer hook-up
- Dual scare lights
- Flush mount baggage doors
- Built in sewer hose compartment
- Dead bolt lock on entry door
- Slide-outs-exterior corner cap protectors
- Fiberglass sidewalls: High gloss gelcoat
- Molded fiberglass front cap: High gloss gelcoat
- Molded fiberglass cap: 1 pc. Rear: High gloss gelcoat
- Roof Ladder
- Carefree patio awning

OPTIONS

- Pull-out Grab Handle @ entrance
- Exterior Shower

ENTERTAINMENT

STANDARD FEATURES

- 24" Samsung TV
- TV antenna w/power booster
- TV jack w/shelf in bedroom
- Samsung DVD/AM/FM/CD 5.1 home theatre system
- Cable TV & phone jack hook-up
- Satellite prep (RG-6 cable)
- Desk @ E-center

OPTIONS

- Extra phone jack
- Extra TV jack
- TV slide & swivel(31KS3, 35KS3, 35SKQ)

KITCHEN

STANDARD FEATURES

- Microwave oven
- Laminate counter top with Corian edging
- Countertop extension-fold down (N/A some models)
- Built-in range hood w/power exhaust fan & light
- Double door refrigerator
- Acrylic double sink w/2 covers

2006 CARRIAGE COMPASS SPECIFICATIONS

- Hand sprayer @ kitchen sink
- Flip down accessory drawer at sink
- Kitchen Island Cabinet (31KS3 & 35KS3 only)
- Range Cover (Bi-fold cover)
- Refrigerator: Larger 2-door Norcold N821 w/ oak fronts
- Pantry slide-out drawers
- Free standing table w/2 chairs and bench

OPTIONS

Booth dinette

LIVING ROOM

STANDARD FEATURES

- Residential furniture w/designer fabrics
- Thicker higher density foam in all furniture
- Hide-A-Bed Sofa
- Free standing end table
- Recliner: Swivel w/"Rock 'n Lock" mechanism (Carrara)
- Mirror w/coat hooks (N/A F30RLS)
- Overhead cabinets in slide-outs above sofa & dinette

- Brushed Nickel wall lights at chairs
- Ceiling fan

OPTIONS

- Slide-out keyboard tray @ desk (34CK3, 35CKQ & 35SLQ only)
- Desk chair

BATHROOM

STANDARD FEATURES

- Oversized medicine cabinet w/extra large mirror
- Large convenient bathroom vanities
- Brushed Nickel light bar – medicine cabinet
- Thetford™ toilet w/foot pedal
- 1 pc. molded fiberglass shower
- 12V power vent
- Skylight over shower
- Towel/Robe hooks

OPTIONS

- 1 pc molded fiberglass garden tub (some models) Porcelain stool w/hand sprayer

BEDROOM

STANDARD FEATURES

- Designer bedroom treatment
- Duvet cover w/pillows
- 312 coil innerspring mattress
- Piston lift queen bed base w/felt lining (select models)
- Drawer under bed base (bedroom suite models)
- Headboard
- Privacy door in bedroom
- Full stand-up bedroom
- Clothes hamper (where applicable)
- Bedroom Slide-out (30'-35')
- Bedroom Wardrobe Slide-out (27RKS only)
- Brushed Nickel lights each side of bed (slide-out only)
- Wall switched overhead lights
- Shadow box shelves @ front mirror wardrobe beside bed (where applicable)

OPTIONS

- King Bed (35KS3)

COMPASS - Fifth Wheel	27RKS	30RLS	31KS3	32KS3	32RLS	33CKQ	34CK3	35CKQ	35KS3	35SLQ	35SKQ
Approx. Exterior length	28' 5"	30' 11"	31' 11"	32' 11"	32' 11"	33' 11"	34' 11"	35' 11"	35' 11"	35' 11"	35' 11"
Approx. Exterior width	96"	96"	96"	96"	96"	96"	96"	96"	96"	96"	96"
Approx. Exterior Height w/AC	12' 6"	12' 6"	12' 8"	12' 8"	12' 8"	12' 8"	12' 8"	12' 8"	12' 8"	12' 8"	12' 8"
Approx. Dry Axle Weight (lb)*	7,605	8,075	8,955	8,890	8,275	9,725	9,675	10,015	9,620	10,215	10,215
Approx. Hitch Weight (lb)*	1,850	1,985	1,850	2,175	2,145	2,045	1,795	2,215	2,105	2,075	1,940
Approx. Total Dry Weight (lb)*	9,455	10,060	10,805	11,065	10,420	11,770	11,470	12,230	11,725	12,290	12,155
Approx. Average Load Capacity (lb)*	4,395	3,925	3,045	3,110	3,725	4,275	2,325	3,985	2,380	3,785	3,785
Axles (number of)	2	2	2	2	2	2	2	2	2	2	2
Fresh Water Capacity w/ water heater**	70 Gal.	70 Gal.	70 Gal.	70 Gal.	70 Gal.	70 Gal.	70 Gal.	70 Gal.	70 Gal.	70 Gal.	70 Gal.
Black/Gray Holding Tank Capacity	55/55 Gal.	55/55 Gal.	55/55 Gal.	55/55 Gal.	55/55 Gal.	55/55 Gal.	55/55 Gal.	55/55 Gal.	55/55 Gal.	55/55 Gal.	55/55 Gal.

* Above listed weights are actual units that include all slide out rooms and all popular options ordered on most coaches. These weights are provided as a guideline only. The actual weight of each individual unit (all units are weighed as they come off the production line) is posted inside each vehicle.

** Fresh water capacity includes the combined capacity of the fresh water tanks and the water heater.



Carriage

COMPASS C2



Visit our Website.

www.carriageinc.com

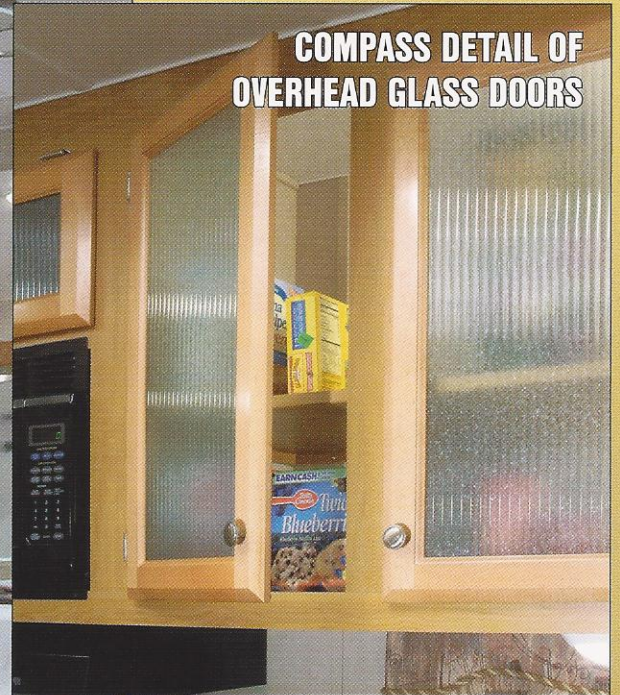
Post Office Box 246 • Millersburg, Indiana 46543 • (574) 642-3622

© 2006 Carriage, Inc. Printed in U.S.A.

Due to continual improvement of Carriage Inc. products, we reserve the right to change material, colors, specifications and prices at any time without prior notification. Selected decorator items used in the photos are not part of the product. Carriage, Inc. assumes no responsibility for any error in type or print reproduction of specifications or color in this brochure.



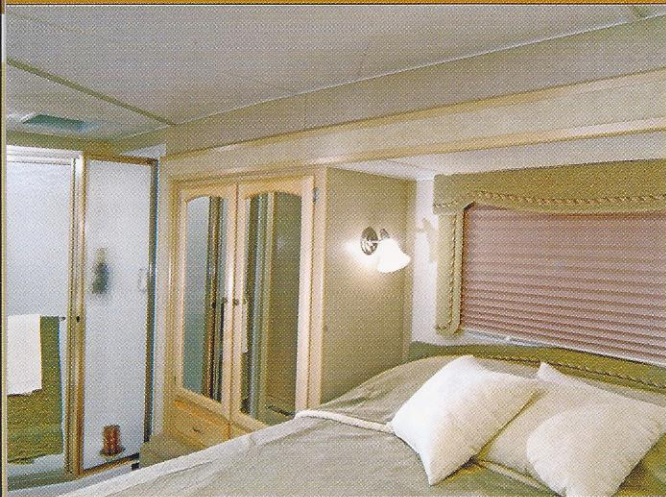
**COMPASS DETAIL OF
OVERHEAD GLASS DOORS**



**DETAIL BY
DETAIL,
WE'VE
CREATED
A HOME**

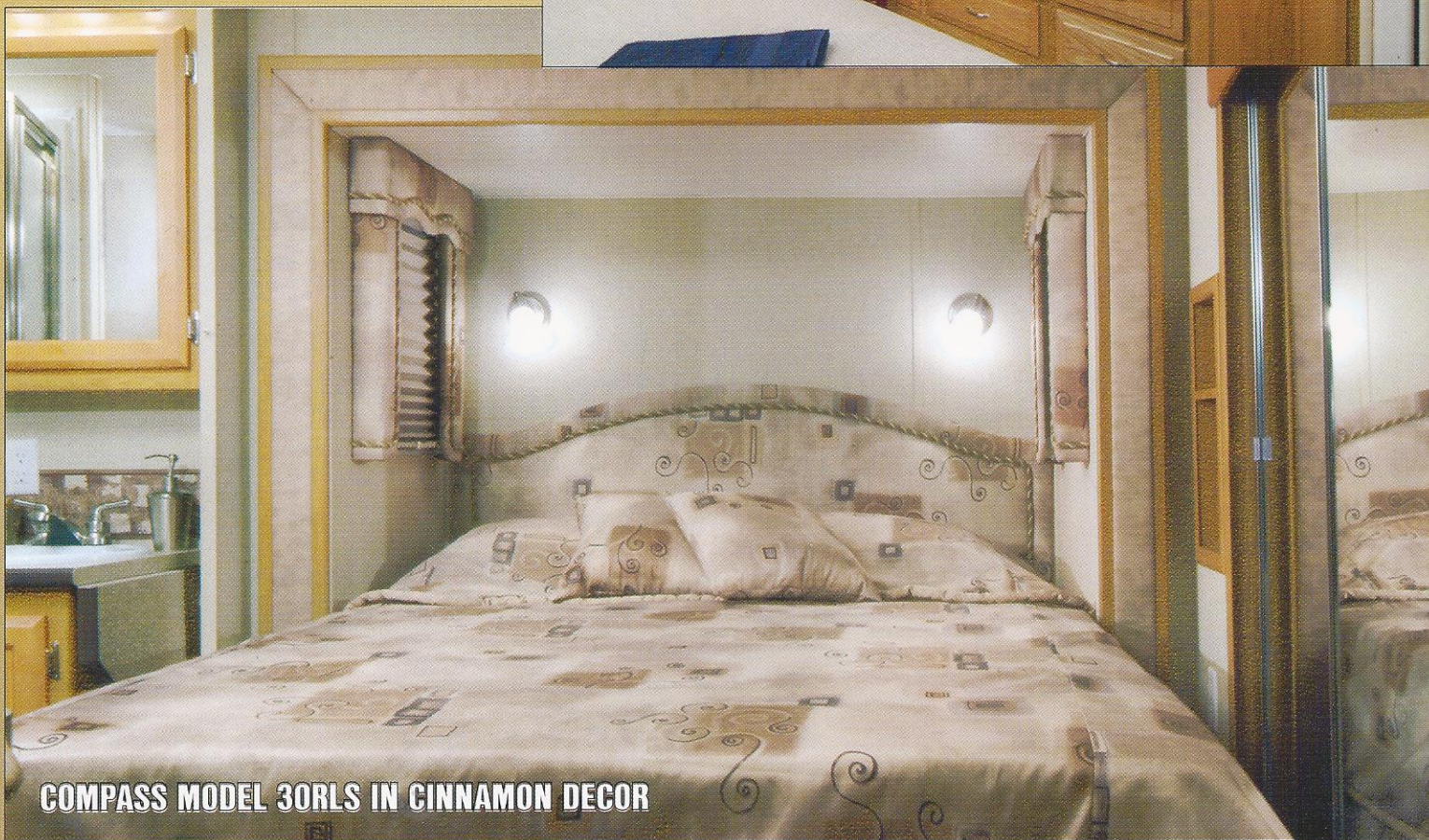
The Compass kitchen not only looks great but also is designed for work efficiency. With generous countertop and storage space cooking in this kitchen is a true pleasure. Hand crafted solid wood cabinetry enhance the beauty of our kitchens along with name brand appliances.

COMPASS MODEL 33CKQ IN BUTTERMILK DECOR



No matter where your adventures lead, you'll always come home to a relaxing bedroom. Not only will you sleep better, you'll also wake up refreshed and ready to tackle another day. The Compass bedroom offers several bedroom layouts for those seeking versatility and flexibility. You'll appreciate the spacious wardrobe and numerous drawers capable of handling all of your personal belongings.

**DESIGNED TO
RAISE YOUR
STANDARD
OF LIVING**

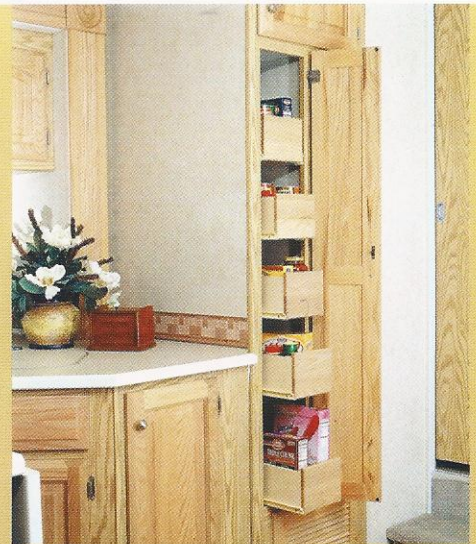


COMPASS MODEL 30RLS IN CINNAMON DECOR

WWW.CARRIAGEINC.COM

QUALITY CRAFTSMANSHIP

After building RVs for over 37 years, we have gained our customers' respect through hard work and unwavering support. We have earned a reputation as the industry innovator, leading the way in style and design. We have always been dedicated to using the finest **quality** materials to create an RV that delivers you to what we refer to as the "**best fifth wheel in the industry**". Our units are built for those with discriminating taste who can appreciate the Carriage difference. We earned a history in this business. We have been committed to excellence for over 37 years and will be there for you in the future.



The Compass has exterior pass-through storage, a **Carriage exclusive**. The extra 60 cubic feet is the perfect place for golf clubs, tennis rackets and any other sports equipment to make your time on the road more enjoyable.

WHY CARRIAGE

We stress the importance of **quality** in manufacturing. With superior **quality** come reliability, durability, and most importantly, customer satisfaction. Quality that has withstood the test of time. We are a progressive thinking company mindful of the future. We continually explore new directions in search of the best equipment and designs. We devote much of our attention to the engineering of our units to maximize the full potential of every component. It's more than our stunning interiors that set us apart from other manufacturers. The **quality** of what we use to achieve that look on the inside is just as important as what we use on the outside and underneath, even where you might not first glance. Looking below the surface of each unit is where you will begin to understand what makes a Carriage so unique. We insist on meticulous installation of all the components on every coach. Adding the exquisite interior fabrics and custom made cabinetry and furniture to the top quality foundation we create for every unit makes for an incomparably finished unit, unequaled and unavailable anywhere else in the industry.

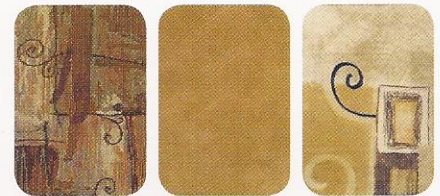
BASIL INTERIOR



BUTTERMILK INTERIOR



CINNAMON INTERIOR



SPECKLED WHEAT | CARPET FOR ALL

2006 CARRIAGE COMPASS



**CARRIAGE EXCLUSIVE WARRANTY
THE BEST WARRANTY AVAILABLE PERIOD.**



THIS IS THE BEST WARRANTY IN THE RV INDUSTRY.
No Exclusions for full timers. Unlike our competition, we want you to enjoy our coaches year-round.



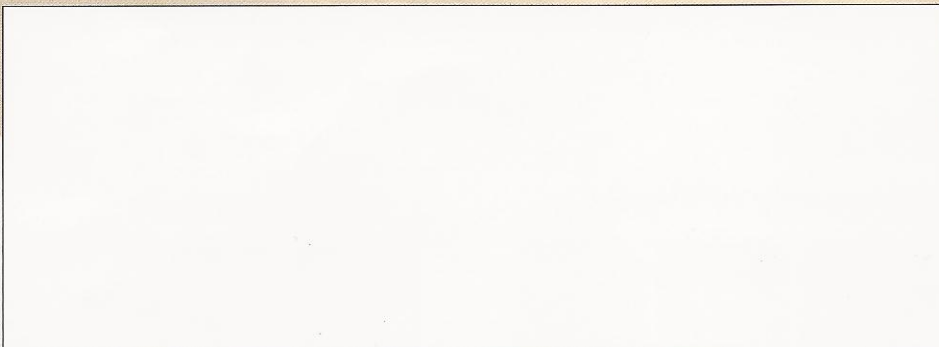
**INDUSTRY LEADING SIXTH TIME
QUALITY CIRCLE AWARD WINNER**

Carriage Inc. received it's towable leading sixth (6) Quality Circle Award in December 2004. Dealer Satisfaction in areas such as sales, product management, and service/warranty support. It is in these products, that are designed and built by our outstanding groups of employees, that makes this award possible.

CARRIAGE USES QUALITY COMPONENTS FROM THESE MANUFACTURERS:



YOUR LOCAL CARRIAGE DEALER:



Carriage
COMPASS C2

Due to continual improvement of Carriage Inc. products, we reserve the right to change material, colors, specifications and prices at any time without prior notification. Selected decorator items used in the photos are not part of the products. Carriage, Inc. assumes no responsibility for any error in type or print reproduction of specifications or color in this brochure.



POST OFFICE BOX 246 MILLERSBURG, INDIANA 46543
(574)-642-3622
WWW.CARRIAGEINC.COM

