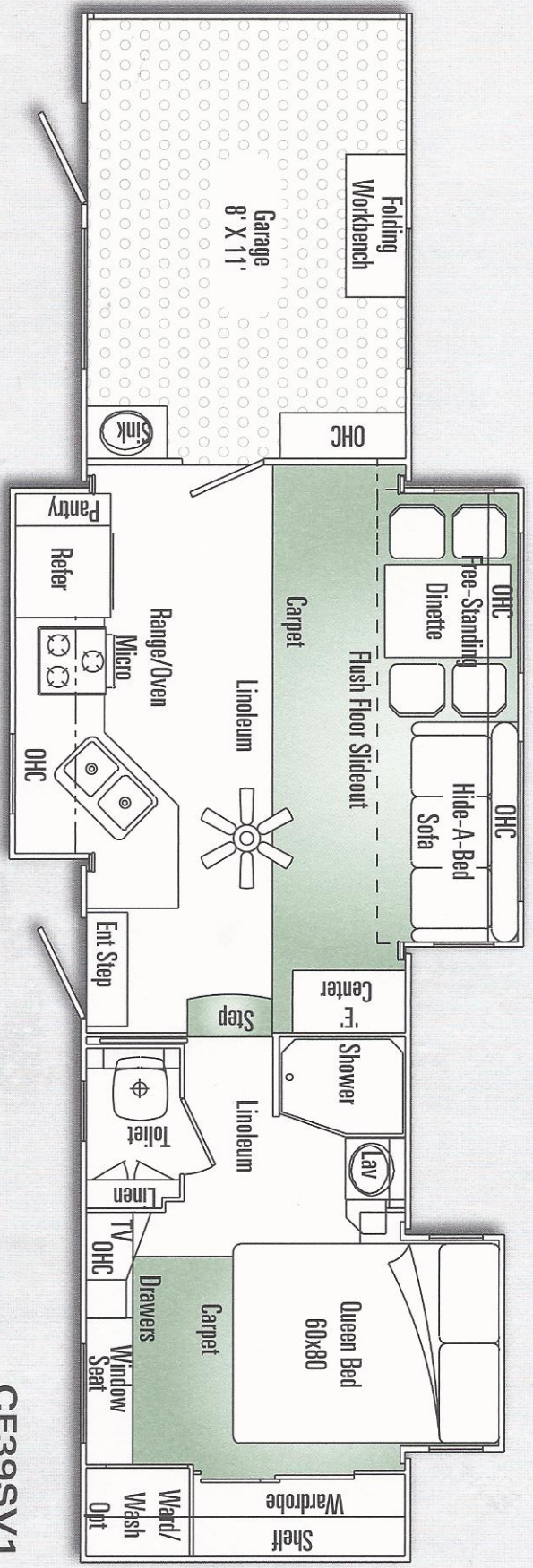
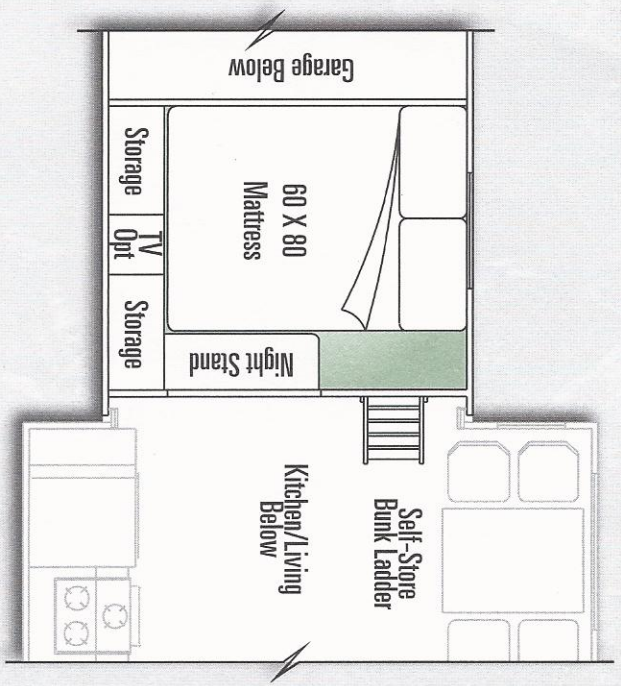
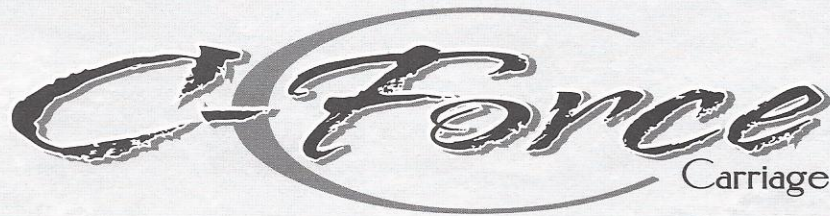


C-FORCE FIFTH WHEEL FLOORPLAN



CF39SV1



C-FORCE FIFTH WHEEL SPECIFICATIONS

INTERIOR

STANDARD FEATURES

- Residential carpet w/pad throughout
- Armstrong® Tuffgaurd Linoleum @ kitchen & bath (Includes entrance on some models)
- Raised panel doors & drawers
- Brushed Nickel hardware on all cabinet doors/drawers
- Metal drawer guides w/nylon rollers
- Designer window treatments throughout
- Oak facer main level slide-out
- Overhead cabinet in slide-outs above sofa
- Xelogen lights with dimmer
- Dressing mirror on sliding door @ bath area
- Night shades
- Wood grab handle

OPTIONS

- Decorator kit
- Natural & Honey Maple cabinetry IPO standard oak
- Central Vacuum System

SYSTEMS

STANDARD FEATURES

- 12V lights in exterior storage compartments
- 12V entrance step light
- 12V light @ hitch
- 12V interior lights
- 12V power vent in bathroom and stool room
- Winegard® TV antenna w/built-in power booster
- TV jacks in living room & bedroom
- Large capacity holding tanks
- Enclosed heated & insulated holding tanks w/separate heat duct
- Holding tank evacuation system
- Large capacity fresh water tank
- Enclosed heated termination valves

- Black water holding tank flush kit
- Monitor panel (full systems)
- Sewer hose carrier (built-in)
- Water system (demand large capacity)
- Water system hook-up (direct city)
- Water heater by-pass kit
- Furnace Suburban™ (pilotless) 35,000BTU
- 10 gal. gas/electric water heater w/DSI
- 15,000 BTU ducted air conditioner low profile – Carrier™
- Prep for 2nd A/C bedroom
- 30 gal. Fuel tank w/pump station & fuel gauge
- Washer/dryer prep. w/plumbing cover
- Battery shut-off switch
- 50 amp electrical service w/marine power cord
- Heavy duty 75 amp solid state converter
- Dual 40# LP gas bottles w/automatic change over
- 12V LP leak detector
- Smoke detector

OPTIONS

- 15,000 BTU low profile conditioner – Carrier™
- Fantastic® Vent w/wall switch
- Fantastic® Vent w/thermostat & rain sensor
- 12V battery installed
- Generator prep w/30 gal. Fuel tank
- Generator Onan 5,500 watt Marquis Gold
- Solar panel prep
- Washer/dryer: Sense Clean DD Combo
- On board service station (power washer, air compressor, jump start/charger)
- Xantrex inverter

CONSTRUCTION/SAFETY & RUNNING GEAR

STANDARD FEATURES

- 100" wide body width
- All climate insulated engineered for full-time use
- Fully enclosed Polyflex underbelly
- Fiberglass insulation glued in place
- Enclosed underbelly w/R-14 fiberglass in-frame insulation, plus R-7 fiberglass insulation in floor. Composite "R" factor for floor R-24
- R-14 fiberglass insulation in roof. Composite "R" factor R-17
- Fully enclosed frame w/heated tanks for less drafts and better towability
- Exclusive drop frame construction
- Painted frame w/stacked 2" x 12" 11 ga. Steel mains
- 5/8" tongue & groove plywood floor
- Aluminum main floor construction W/1 1/2 x 2 1/2 joist on 16" centers
- Dual insulated floor design double vapor barrier
- Fully insulated main floor and frame for double insulation protection
- Aluminum constructed sidewalls
- Full 2" wall w/box tube aluminum welded both sides
- Fully decked roof (1/2" plywood)
- 5" aluminum trussed roof 16"
- Flush floor on main slide out room
- Heavy duty 12V rack & gear slide-out system
- Fully insulated slide-out floors (R-8)
- Front electric power jacks
- Two rear stabilizing jacks
- Snap pins @ front jack legs
- Dexter Axles w/2" x 12" brakes
- D7000 Axle w/Nev-R-Lube (3 axles)
- MOR/ryde® RE (rubber equalizer) suspension Double heavy duty leaf spring suspension
- Greasable shackles

- Adjustable spring hangers
- Eight-lug wheels & radial tires
- Spare tire & wheel recessed)
- Shock absorbers @ all wheels
- 16" tires & wheels - LT235/85R16 "E" range

OPTIONS

- Dexter axles w/2 1/2" brake system – ventilated
- Front jacks w/separate motors & switches
- MOR/ryde pin box
- Astro foil insulation package
- Entrance door @ cargo area w/9" Hi-rise triple step @ rear d/s

CARGO AREA

- Vent w/wall switch
- Mini blinds
- Aluminum cabinets (MOR/STOR)
- Sink
- Oil resisting floor

OPTIONS

- Sony CD receiver
- Marine speakers (2)
- Power winch
- A/C
- Pull down rear screen

EXTERIOR

STANDARD FEATURES

- Custom molded one piece front and rear gelcoat fiberglass caps
- Gelcoat fiberglass exterior sidewalls
- Painted rocker panels w/automotive clearcoat finish
- Automotive style bumper
- Diamond Plate Front Gooseneck
- Mid ship turn signals
- One piece vinyl Britetek roof
- Awning rail w/gutter & down spouts
- Carefree patio awning
- Prep for electric awning
- Slider windows @ ends of living area SO room
- Escape window (bedroom)
- GL20 solar tinted safety glass windows
- Flush mount baggage doors
- Basement storage w/2-4 access doors w/12V lights

- Large 32 cubic foot front compartment for generator
- Storage shelves/hose rack in front gen. compartment
- Ozite felt lined exterior compartments
- Pullout grab handle @ entry door - Lighted
- Dead bolt door lock
- Breakaway switch
- Patio light – 12V
- 110V exterior recept (GFI)
- Courtesy light @ sewer hook-up
- Scare lights (2)
- Exterior shower

OPTIONS

- Rear spot light
- Dual pane windows (w/GL20 tinted glass)
- Slide-out battery tray
- Slide-out LP bottle tray
- Slide-out cargo tray @ main storage area
- 12V refer drawer – D/S exterior compartment

ENTERTAINMENT

STANDARD FEATURES

- Residential style entertainment center
- Television 24" Sony Wega
- Sony AM/FM/CD/DVD Home Theater System 5.1 with subwoofer
- Cable TV hookup
- Phone jack (2)
- Satellite prep (RG-6 cable)
- Desk @ E-center

KITCHEN

STANDARD FEATURES

- Laminate counter tops w/Corian edging
- Countertop extension (where applicable)
- Acrylic deep double bowl sink w/2 covers
- Lift-off faucet
- Bi-fold range cover
- Full pantry slide out drawers
- Oak dinette table w/expandable leaf & 4 chairs w/storage seats

- Microwave w/turn table and built-in hood vent
- Refrigerator: Norcold N821 (2 door, gas/electric 8 ft.) w/raised panel wood doors
- Decorative mirror w/coat hooks
- Water purifier w/seperate faucet
- Flip down accessory drawer

OPTIONS

- Microwave oven (convection)
- SSV solid surface countertops – kitchen w/recessed sink
- Platinum Package (Stainless Steel-look microwave, refer,sealed burner rangehood range)
- Cook top w/doors below IPO oven
- Refrigerator 4 door: Norcold 1200LR
- Refrigerator 4 door: Refrigerator: 10' Norcold
- Booth dinette

LIVING ROOM

STANDARD FEATURES

- 6' 2" slide-out height – main slide-out(s)
- Hide-A-Bed sofa w/pillows

BATHROOM

STANDARD FEATURES

- Porcelain stool
- Towel bar/hamper
- Shower bubble w/shade (16 x 24)

OPTIONS

- SSV solid surface countertops – lavatory

BEDROOM

STANDARD FEATURES

- Piston lift queen bed w/felt lining
- Queen pillow top mattress
- Duvet cover w/pillows
- Accent prism lights – 2 each side of bed
- Clothes hamper - built in
- Cedar lined wardrobes

OPTIONS

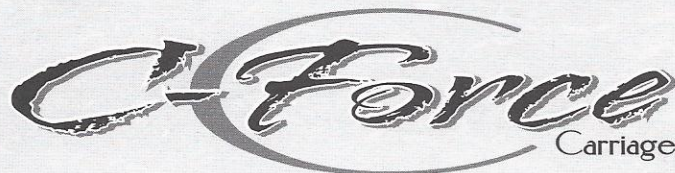
- Floor safe

C-Force Carriage

C-FORCE	39SV1
Approx. Exterior length	39'11"
Approx. Exterior width	100"
Approx. Exterior Height w/AC1	12' 11"
Approx. Dry Axle Weight (lb)*	11,960
Approx. Hitch Weight (lb)*	2,940
Approx. Total Dry Weight (lb)*	14,900
Approx. Average Load Capacity (lb)*	4,100
Axles (number of)	3
Fresh Water Capacity w/ water heater **	110 Gal.
Black/Gray Holding Tank Capacity	38/72 Gal.

* Above listed weights are actual units that include all slide out rooms and all popular options ordered on most coaches. These weights are provided as a guideline only. The actual weight of each individual unit (all units are weighed as they come off the production line) is posted inside each vehicle.

** Fresh water capacity includes the combined capacity of the fresh water tanks and the water heater.



Visit our Website.

www.carriageinc.com

Post Office Box 246 • Millersburg, Indiana 46543 • (574) 642-3622

© 2006 Carriage, Inc Printed in U.S.A.

Due to continual improvement of Carriage Inc. products, we reserve the right to change material, colors, specifications and prices at any time without prior notification. Selected decorator items used in the photos are not part of the product. Carriage, Inc. assumes no responsibility for any error in type or print reproduction of specifications or color in this brochure.