

SPRINTER

by Keystone

*You Don't Have
To Settle*



2005

TRAVEL TRAILERS AND FIFTH WHEELS



The 292 high-profile Copper Canyon fifth wheel for 2005 is shown here in the beautiful Cranberry decor, accented with silvery Satin Nickel door handles with matching Satin Nickel trims on lighting fixtures and the wall clock. With this floor plan, you'll relax in swivel rockers while you gaze through the panoramic rear window. The

warm, richly grained Endura™ residential quality cabinetry includes overhangs at the rear and in the double slideout area. Easy-access storage throughout your Sprinter allows you an uncluttered, spacious environment. The look is further enhanced by residential quality carpeting and floor covering for 2005.

Welcome to Sprinter, a leading brand of Keystone RV Company, the nation's largest manufacturer of towable travel trailers and fifth wheels.

Sprinter is one of North America's top-selling brands. We have achieved this by utilizing our customer's wants, needs and desires as the origin and foundation of our design.

Americans love to travel, and Sprinter is made to meet both the challenges of the open road and the high standards of convenience and interior design that RVers expect.

To make it easier to identify the Sprinter you want, we have introduced three Sprinter categories for 2005—the Copper Canyon, featuring aluminum framed, fiberglass exterior construction; our conventionally constructed Savannah travel trailers; and the X-Tended length Destination series, also featuring conventional construction.

All that remains for you to do is choose the Sprinter you want and take to the road...



The Sprinter 293 FWSLS Fifth Wheel features a bedroom slideout with a deluxe bathroom adjacent, creating an inviting retreat. The Silver Nickel fixtures and sink, the garden shower and the deep, full-wall wardrobe with mirrored doors — all add to the luxury of this beautiful Sprinter bedroom Master Suite.

SPRINTER 2005



SPRINTER

COPPER CANYON



6-LAYER LAMINATED CONSTRUCTION



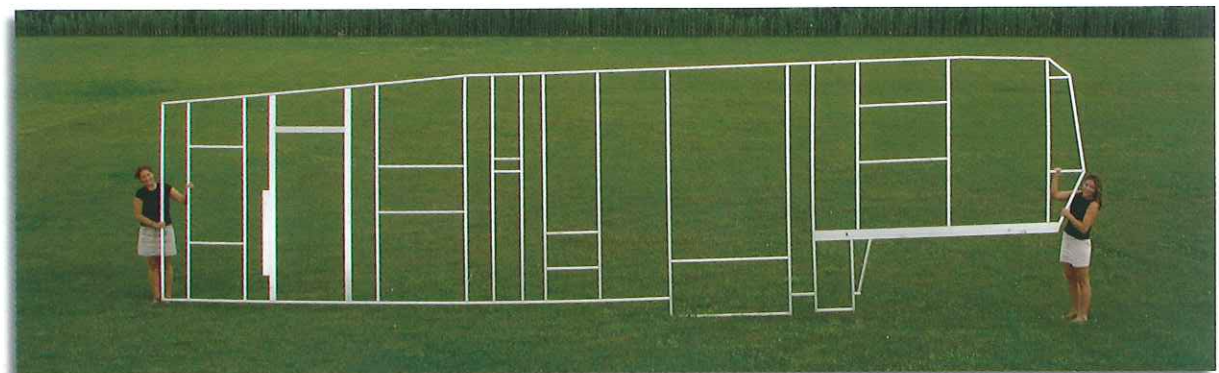
LAMINATED, ALUMINUM-FRAMED SIDEWALL CONSTRUCTION

Teamed with Sprinter's stylish, aerodynamic exterior design—Sprinter's Copper Canyon series offers you strength, light weight, maximum towability, and unprecedented style—all at a price you can afford.

Sprinter's Copper Canyon Series offers you Fully welded aluminum sidewalls, light, yet rugged, strong and stable.

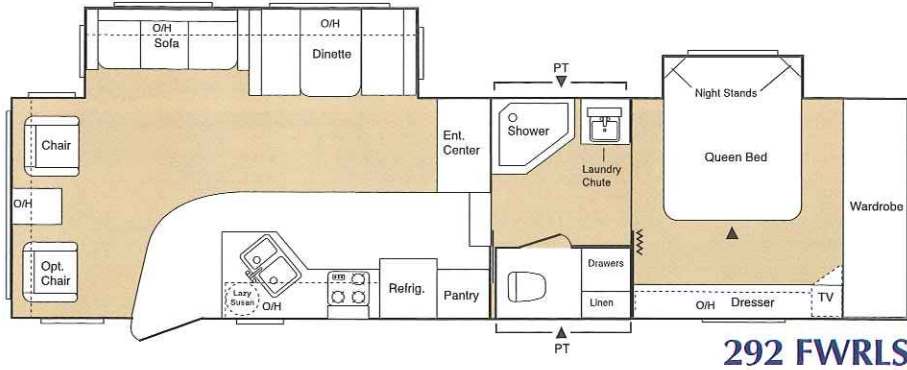
HIGH- AND MID-PROFILE FIFTH WHEELS AND TRAVEL TRAILERS

- Construction previously found only in much higher priced fifth wheels and travel trailers, an unprecedented value.
- Advanced Sprinter 6-layer sidewalls for a well-insulated, yet lightweight towable RV with uncompromised structural integrity.
- Exterior design utilizing the latest technology in wind resistance, engineered for maximum ease of handling.

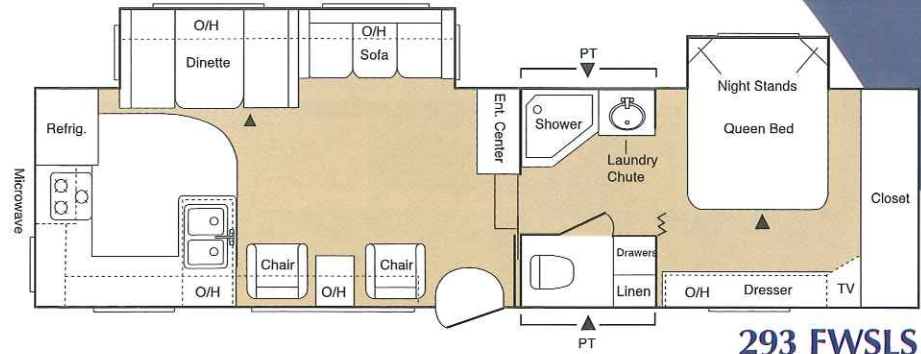


COPPER CANYON HIGH PROFILE FIFTH WHEELS

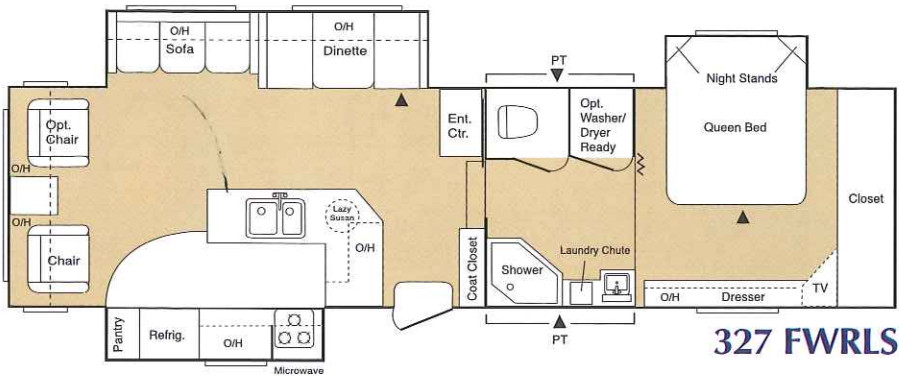
For specifications, please see the inside back cover of this brochure.



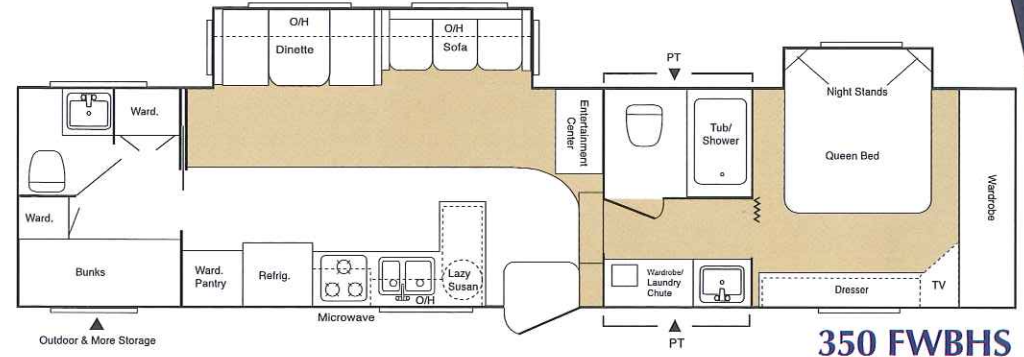
292 FWRLS



293 FWSLS



327 FWRLS



350 FWBHS



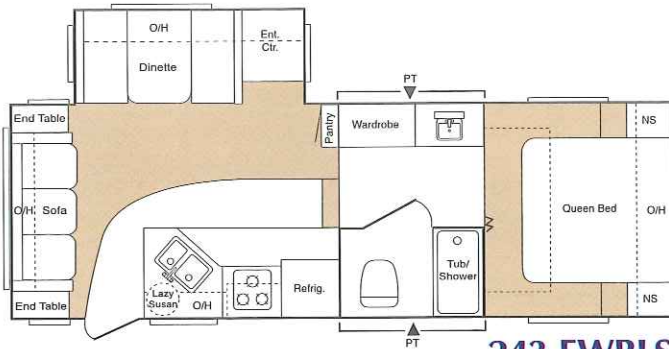
Features like this folding grab handle, available on all Sprinter fifth wheels, show the careful attention to detail you find on every Sprinter, inside and out.



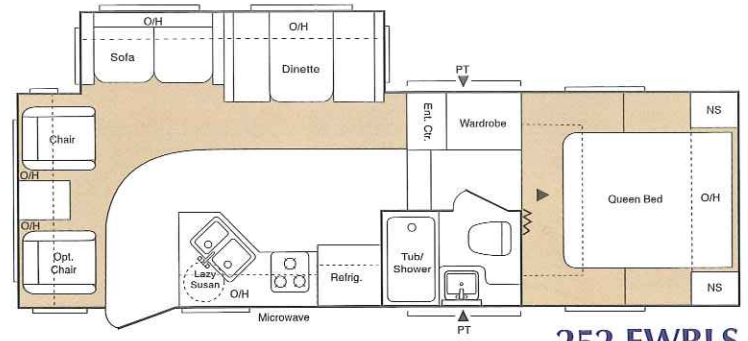
Our residential 60/40 Silver Nickel sink with matching high-spout faucet, so convenient for easy meal preparation and clean-up.

SPRINTER

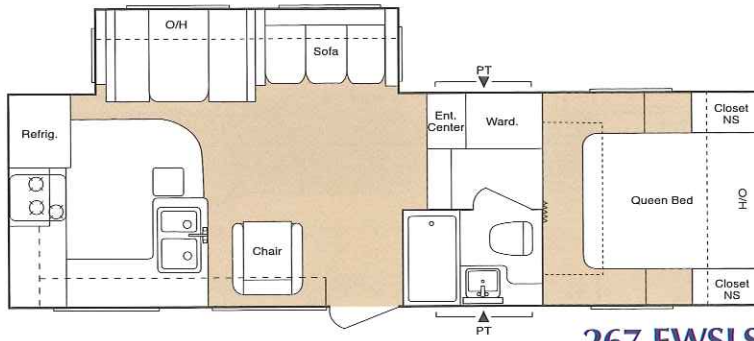
COPPER CANYON MID-PROFILE FIFTH WHEELS



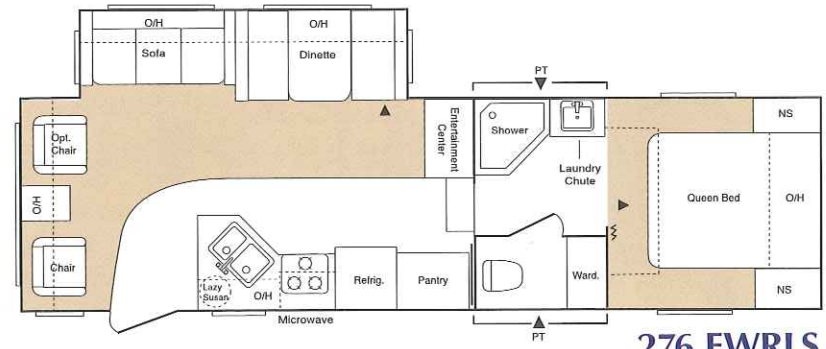
243 FWRLS



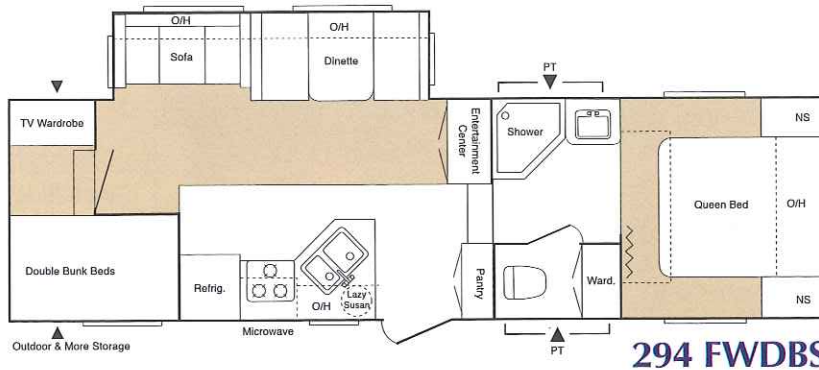
252 FWRLS



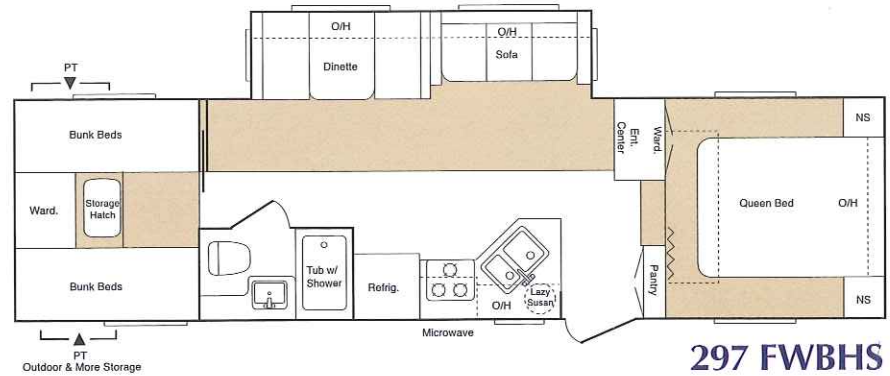
267 FWSLS



276 FWRLS

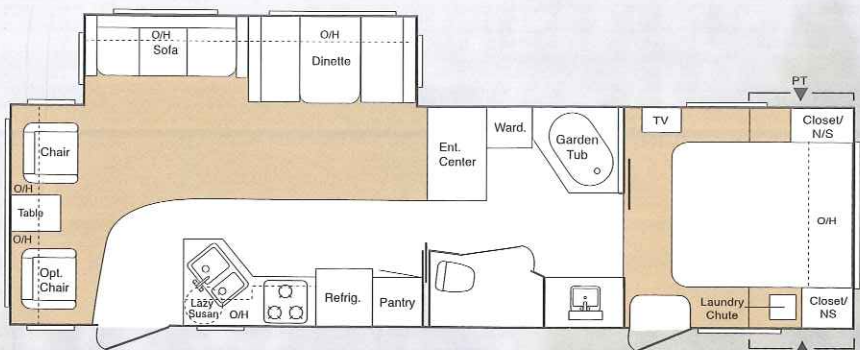


294 FWDBS

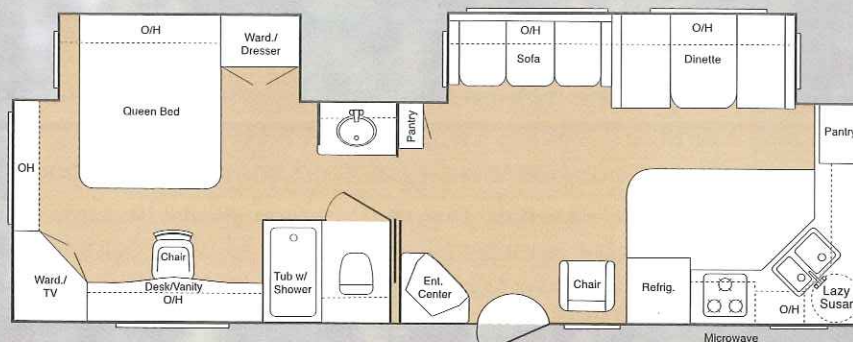


297 FWBHS

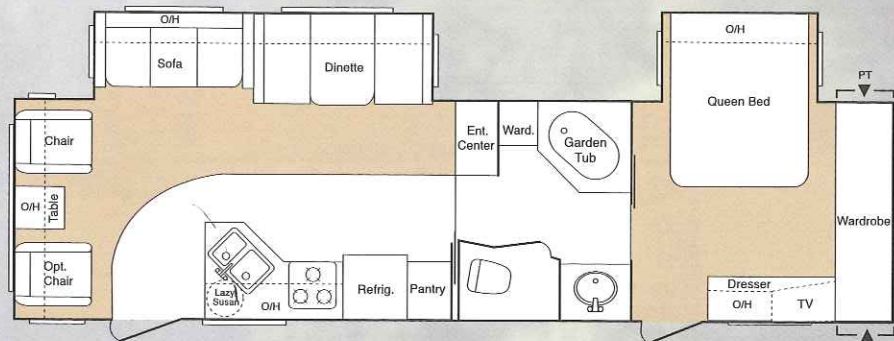
COPPER CANYON TRAVEL TRAILERS



298 RLS



301 FKMS



320 RLS



The 299 Sprinter travel trailer is shown here in the beautiful Symphony Sage decor. Draperies, valances, and cabinetry have been restyled for 2005, resulting in a lighter, more open look while maintaining the warmth and comfortable residential feeling that tells you it's a Sprinter.



The residential look of Sprinter's stylish camel-back sofa is in keeping with the latest home furnishing trends. Optionally, the sofa is available as a Hide-a-Bed.*

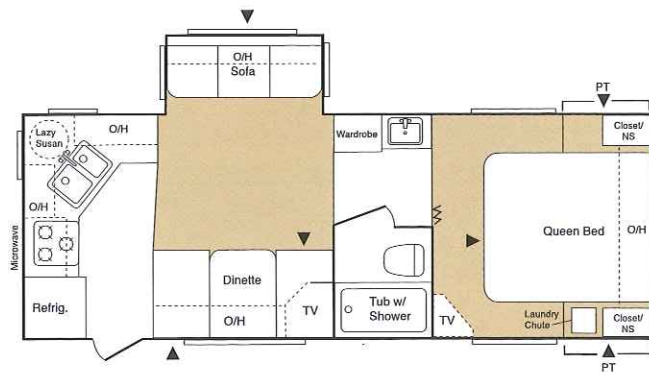
*Available on most models.

SPRINTER SAVANNAH TRAVEL TRAILERS

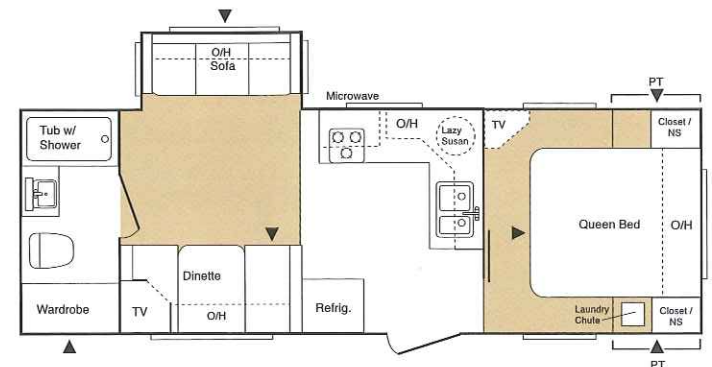
Encompassing all the high-end residential quality interior and exterior convenience features found in Sprinter's Copper Canyon series, Sprinter proudly offers the Savannah series, built with our aluminum-reinforced conventional wood-frame. and utilizing an aluminum exterior to create one of the finest values in a recreational vehicle available on the market today. Sprinter Savannah, like all other Sprinters, features abundant details like our convenient Silver Nickel sink with its high-arch faucet—details which say we listen to what RVers want in their travel trailers and fifth wheels. Choose your Sprinter Savannah travel trailers from a variety of floor plans created for individual needs and engineered for easy maintenance. Along with convenience, Sprinter's renowned storage capacity and stylishly comfortable furnishings will find you traveling more than ever...
Go ahead...Life is easy with Savannah...



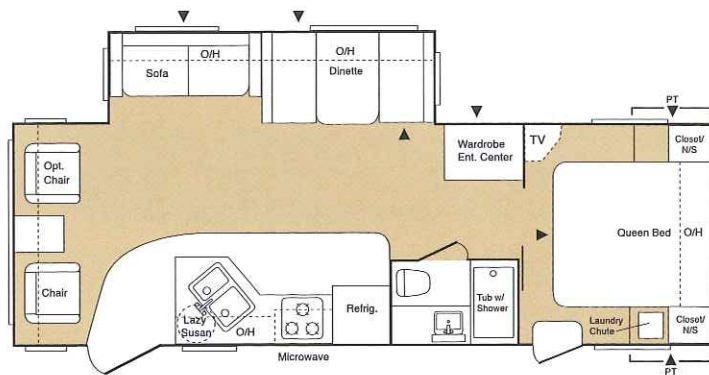
Sprinter's nicely concealed laundry chute sends clothes to the convenient laundry basket below.



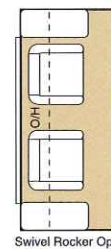
249 RKS



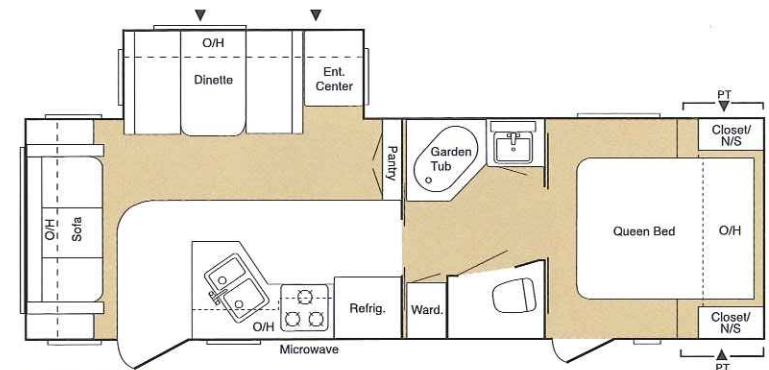
259RBS



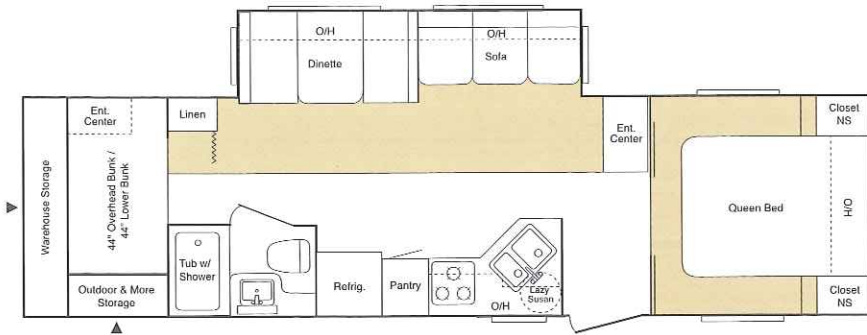
274 RLS



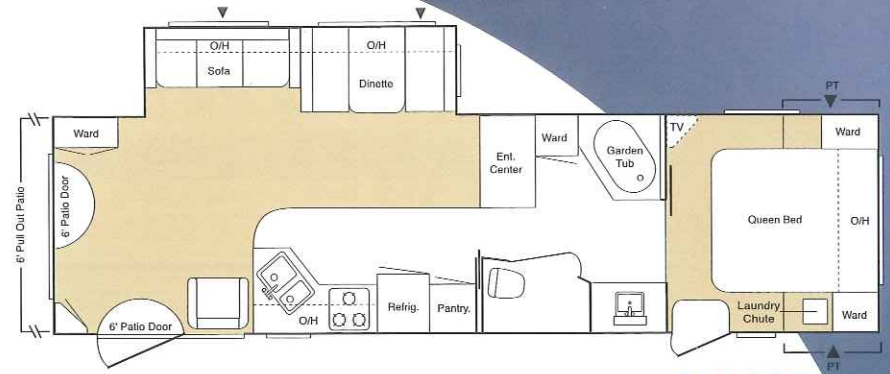
Swivel Rocker Opt.



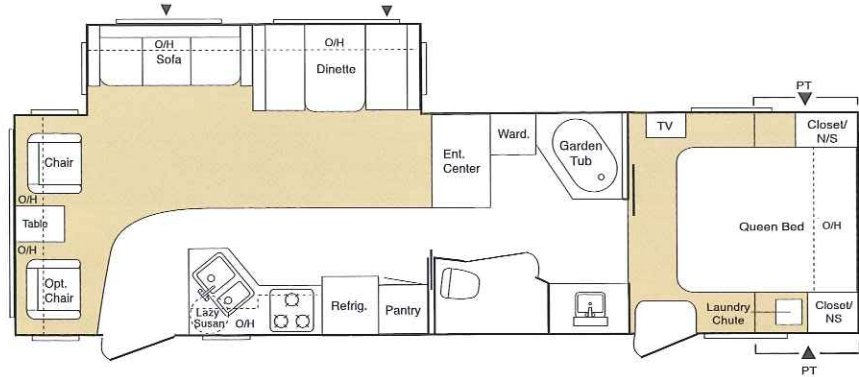
278 RLS



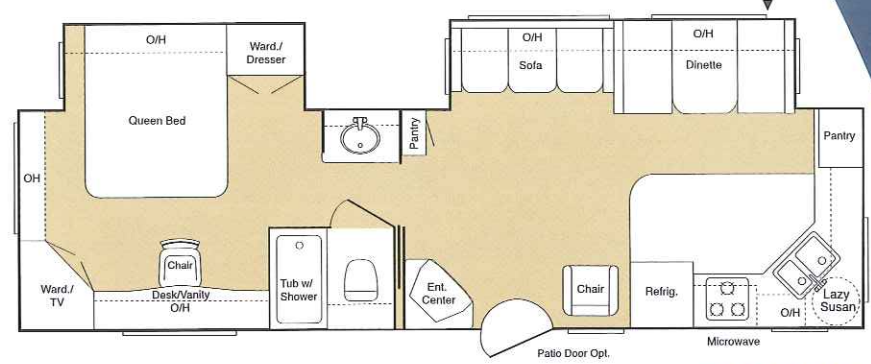
295 DBWS



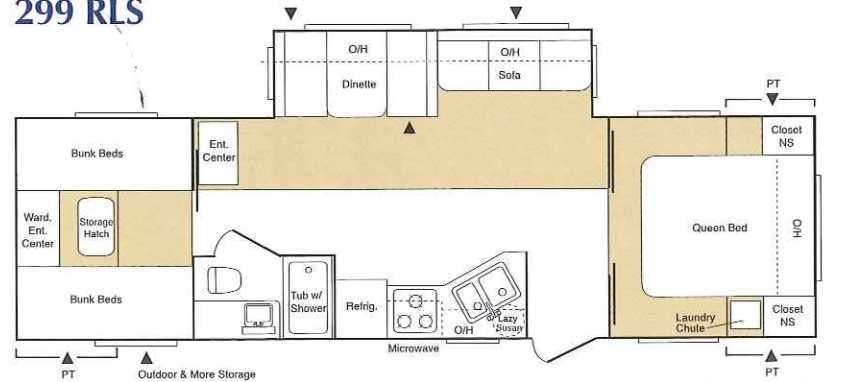
296 RPS



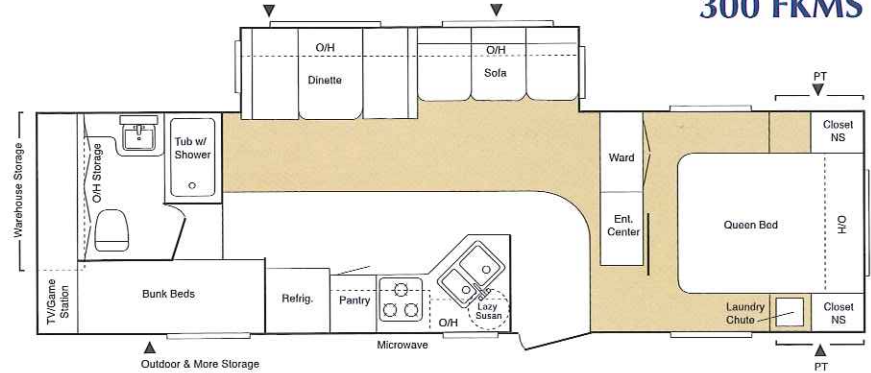
299 RLS



300 FKMS



303 BHS



307 BHW



Lazy Susan maximizes interior cabinet storage and provides easier access to all your supplies. Saves you time, too.



Every Sprinter includes a coat rack conveniently located near the entrance door. Touches like these in every corner of your Sprinter show you how we care about your comfort and convenience.

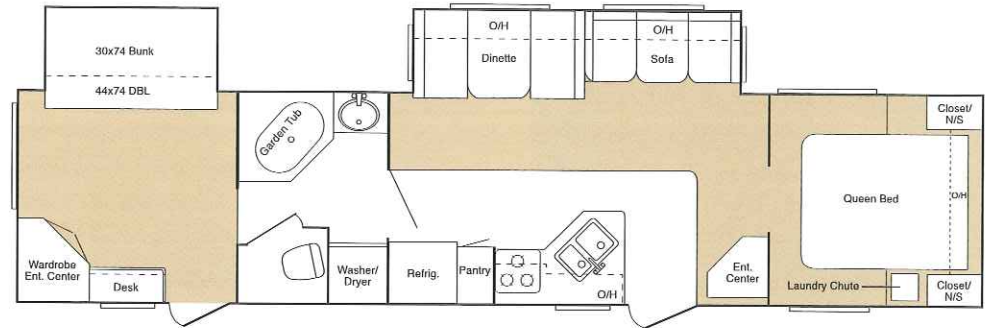
For specifications, please see the inside back cover of this brochure.

SPRINTER

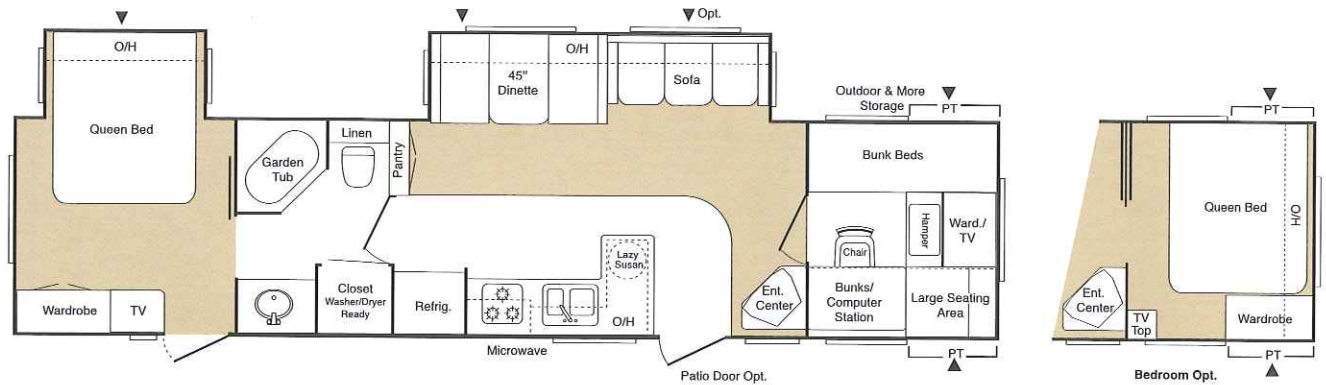
DESTINATION X-TENDED LENGTH TRAVEL TRAILERS

THERE IS A SPRINTER FOR EVERY BUDGET AND EVERY LIFE STYLE

Sprinter Destination travel trailers have been created for the enjoyment of full-season RVers and others who wish to leave their Sprinter in one place for an extended period. With the addition of the patio door option, Destination Sprinters have an exceptionally light and airy quality. Both the 365 BHS and the 377 BHS offer two bedrooms and the 380 BWS is available with two sofas, so there is always room for extra guests. X-Tended Length Destination Sprinters are great for larger families, too.



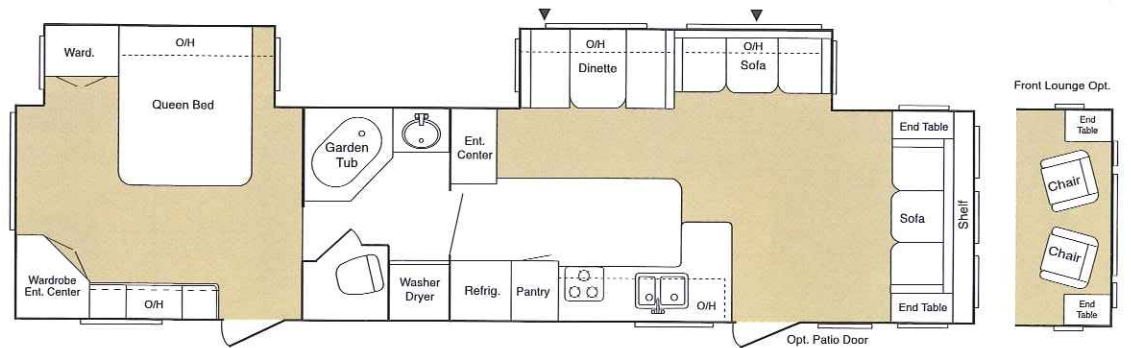
365 BHS



377 BHS



Sprinters give you plenty of storage space. An amazing amount of exterior access pass-through storage lets you take along all your favorite sporting equipment.



380 BWS

SPRINTER COPPER CANYON

HIGH PROFILE FIFTH WHEELS	GVWR	Gross Dry Weight*	Carrying Cap.	Hitch	Dry Axle Weight	Ext. Length	Ext. Width	Ext. Height (Top of A/C)	Fresh Water	Waste Water	Grey Water	LPG Cap.	Tire Size
292FWRLS	11900	9100	2800	1740	7660	31'11"	8'	12'10"	45 gal.	43 gal.	56 gal.	60	225/75R15
293FWSLS	12360	9520	2840	2200	7620	31'11"	8'	12'10"	45 gal.	43 gal.	56 gal.	60	225/75R15
327FWRLS	14280	9810	4470	2280	8060	34'3"	8'	12'10"	45 gal.	43 gal.	56 gal.	60	235/85R16
350FWBHS	12540	9460	3080	2380	7320	36'9"	8'	12'10"	45 gal.	86 gal.	61 gal.	60	225/75R15
MID PROFILE FIFTH WHEELS	GVWR	Gross Dry Weight*	Carrying Cap.	Hitch	Dry Axle Weight	Ext. Length	Ext. Width	Ext. Height (Top of A/C)	Fresh Water	Waste Water	Grey Water	LPG Cap.	Tire Size
243 FWRLS	8180	6330	1850	1180	5420	26'6"	8'	11'10"	45 gal.	43 gal.	38 gal.	60	205/75R15
252 FWRLS	8200	6930	1270	1200	5860	26'5"	8'	11'10"	45 gal.	43 gal.	38 gal.	60	205/75R15
267 FWSLS	10000	7100	2900	1200	6040	27'9"	8'	11'10"	45 gal.	38 gal.	38 gal.	60	225/75R15
276 FWRLS	10100	7200	2900	1300	6040	29'7"	8'	11'10"	45 gal.	43 gal.	56 gal.	60	225/75R15
294 FWDBS	11520	7710	3810	1350	6600	31'8"	8'	11'10"	45 gal.	38 gal.	58 gal.	60	225/75R15
297 FWBHS	11500	7740	3760	1340	6700	31'6"	8'	11'10"	45 gal.	43 gal.	56 gal.	60	225/75R15
TRAVEL TRAILERS	GVWR	Gross Dry Weight*	Carrying Cap.	Hitch	Dry Axle Weight	Ext. Length	Ext. Width	Ext. Height (Top of A/C)	Fresh Water	Waste Water	Grey Water	LPG Cap.	Tire Size
298RLS	9680	6780	2900	880	6200	32'11"	8'	10'10"	45 gal.	43 gal.	56 gal.	60	225/75R15
301FKMS	11240	7870	3370	1080	7100	32'11"	8'	11'1"	45 gal.	43 gal.	61 gal.	40	225/75R15
320RLS	11000	8010	2990	840	7460	34'11"	8'	11'1"	45 gal.	43 gal.	56 gal.	60	225/75R15

SPRINTER SAVANNAH

TRAVEL TRAILERS	GVWR	Gross Dry Weight*	Carrying Cap.	Hitch	Dry Axle Weight	Ext. Length	Ext. Width	Ext. Height (Top of A/C)	Fresh Water	Waste Water	Grey Water	LPG Cap.	Tire Size
249RKS	7620	5900	1720	620	5380	26'6"	8'	10'10"	45 gal.	38 gal.	61 gal.	60	205/75R15
259RBS	7640	5650	1990	640	5280	27'6"	8'	10'10"	45 gal.	38 gal.	61 gal.	60	205/75R15
274RLS	9400	6410	2990	600	6220	29'1"	8'	10'10"	45 gal.	43 gal.	38 gal.	60	225/75R15
278RLS	9320	6460	2860	520	6240	29'11"	8"	10'10"	45 gal.	38 gal.	38 gal.	60	225/54R15
295DBWS	TBA	TBA	TBA	TBA	TBA	TBA	TBA	TBA	TBA	TBA	TBA	TBA	TBA
296RPS	9620	7700	1920	700	7200	32'11"	8'	10'10"	45 gal.	32 gal.	48 gal.	60	225/75R15
299RLS	9680	6780	2900	880	6200	32'11"	8'	10'10"	45 gal.	43 gal.	56 gal.	60	225/75R15
300FKMS	11240	7870	3370	1080	7100	32'11"	8'	11'1"	45 gal.	43 gal.	61 gal.	40	225/75R15
303BHS	9620	6830	2790	820	6340	33'2"	8'	10'10"	45 gal.	43 gal.	38 gal.	60	225/75R15
307BHW	9520	7140	2380	720	6720	32'11"	8'	10'10"	45 gal.	43 gal.	38 gal.	60	225/75R15

SPRINTER DESTINATION

TRAVEL TRAILERS	GVWR	Gross Dry Weight*	Carrying Cap.	Hitch	Dry Axle Weight	Ext. Length	Ext. Width	Ext. Height (Top of A/C)	Fresh Water	Waste Water	Grey Water	LPG Cap.	Tire Size
365BHS	11140	8205	2935	980	7320	38'1"	8'	10'11"	45 gal.	43 gal.	56 gal.	60	225/75R15
377BHS	11220	8560	2660	1060	7800	38'7"	8'	10'11"	45 gal.	43 gal.	56 gal.	60	225/75R15
380BWS	11400	8170	3230	1240	7300	38'7"	8'	10'11"	45 gal.	43 gal.	56 gal.	60	225/75R15

* Gross Dry Weight does not include options or fluids.

FEATURES IN EVERY SPRINTER

- All TT Ceilings Increased to 80"
- Enlarged Overhead Cabinets
- Upgraded Carpeting and Wallboard with Border
- Unique Laundry Chute or Clothes Hamper; Clothes Empty Into Outside Access Storage Area*
- Satin Nickel Coat Rack at Entry Door
- Residential Kitchen Sink with Deep 60/40 Basins with High-Arch Faucet
- Lazy Susan Maximizes Cabinet Space
- Swing-Out Fifth Wheel Entry Handle
- Exterior Security Lights on All Fifth Wheels
- TV Antenna
- Cable Hook-up, Satellite Prep
- Pass-Through Exterior Storage*
- Designer Interiors with Endura™ 10-Year Warranty Cathedral Cabinet Doors
- Phone Jack
- 45" Dinette in Most Slideouts for Extra Sleeping Room and More Comfortable Dining
- E-Z Slide Storage Tray with Booth Dinettes
- Full-Function Monitor Panel in All Kitchens
- Residential-Style Door Latches & Six-Panel Doors
- Large Skylight over Every Shower and Tub
- Deluxe Mastercraft® Residential-Quality Furniture
- Awning
- Ducted Air Conditioning
- Large Microwave
- Mini-Blinds
- Upgraded Innerspring Mattress

*Most Floorplans

OPTIONS

- STABILIZER JACKS
- OUTSIDE SHOWER
- 10-GAL. HOT WATER HEATER • PATIO DOOR
- FREE-STANDING TABLE WITH FOUR CHAIRS
- WASHER/DRYER HOOK-UP
- EXTRA LARGE REFRIGERATOR
- HIDE-A-BED SOFAS
- 15,000 BTU AIR CONDITIONER
- SOLID WOOD REFRIGERATOR FRONT
- SPARE TIRE AND CARRIER
- RESIDENTIAL REFRIGERATOR



Sprinter bunk models offer you unprecedented ease of access and storage capacities. Look how our Outdoor & More™ storage,* shown here, has ample room for both parent's and kid's bikes. Or, take along a tent, barbecue grill or other oversize equipment. Outdoor & More offers 60 cu.ft. of space.

**available on most bunk models*

CONSTRUCTION

BUILT WITH INTEGRITY... from the inside out

- Cambered steel frame with extra supporting outriggers under every Sprinter RV.
- One-piece, seamless, 5/8" floor deck with a 25-yr. mfr.'s warranty.
- Rubber roof (12-yr. mfr.'s warranty) rolled over side and rear walls to eliminate seams and prevent potential leaks.



Welded aluminum supports in all raised-bath fifth wheel decks provide strength and rigidity in all critical high-stress areas.



With Space-Maker™ useable storage space is greatly expanded by removing the fresh water tank from the interior of the unit. The Space Maker's location also lowers the center of gravity, improving towability. The heated compartment gives you added protection when cold-climate camping.

- Fully-decked roof on trussed rafters, a full 5" thick, providing an R-11 insulation rating.
- Easy-opening entry steps with extra-low first step.
- Taller, wider entry door, radius corners.
- Outside storage doors.



"Warehouse" storage is available in the 295 ABWS and the 307 BHW. If you're looking for convenience and easy access to tools and toys, these are your floor plans.

SPRINTER VALUE

Sprinter value happens because we focus on the manufacturing process. We put the dollars that many companies spend on large advertising campaigns, executive benefits, and costly office complexes into improving our products. We also strive to increase our manufacturing efficiencies while maintaining high quality. We achieve this high level of quality by employing a workforce from a community which still values craftsmanship. Finally, we listen to our Sprinter customers across the country. We learned a long time ago that great ideas come from the people who use our products daily. We appreciate and value this input and have implemented many of these ideas into our products.

The result of these efforts has been dramatic. Sprinter recreational vehicles are now seen everywhere—on the Interstates, on the Trans-Canadian Highway, from the Rockies to the Everglades, in just about any camping resort or national park you enter in the U.S. or Canada. We welcome you to join the Sprinter family of travel trailers and fifth wheels, where quality, comfort, and function meet.



**Keystone RV
Company™**

2642 Hackberry Drive Goshen, Indiana 46526
(574) 535-2100 www.keystone-sprinter.com

Your Sprinter Dealer:



Product information and photography are as accurate as possible at the time of publication. Colors and finishes are photographic representations and may appear differently when viewing actual materials. Some features shown are optional. Features, floorplans, and specifications are subject to change without notice.

M 08/04