

portsmenTM *Sportster* by K-Z



Travel Trailers & Fifth Wheels

NEW VISION[®] Sportster



ATTENTION:
Outdoor enthusiasts!
Don't leave your cycles and
ATVs at home when you
can enjoy the excitement,
convenience and comforts of a
KZ toy hauler.



Enjoy the comforts of home and even greater access and mobility in the great outdoors with a floorplan that best fits your needs.

New Vision® Fifth Wheel Décor

Standard Convenience Package:

- EZ Lube Axles
- Tinted Safety Windows
- 13,500 BTU A/C
- Foot Flush Toilet
- Hi Output Range w/Auto Igniter and 22" Oven
- Water Heater By Pass
- TV Antenna w/Booster
- Two Kitchen Sink Covers
- Gel Coat High Gloss Exterior
- Microwave
- Awning

Standard Convenience Plus Package:

- Fold-Away Entry Handle
- Two Security Lights
- Stabilizer Jacks
- Electric Power Front Jacks
- Ladder
- Shock Absorbers
- Spare Tire
- Spare Tire Hoist
- 10 Gal. Gas/Elec. Water Heater DSI
- Skylight Over Shower
- Wired for Satellite
- 50 Amp Service
- Am/Fm CD DVD w/Surround Sound
- Black Tank Flush System
- Stove Cover
- Raised Panel Refer Front
- Neo-Angle Fiberglass Shower
- Postrest Mattress
- Color TV

Comfort Package:

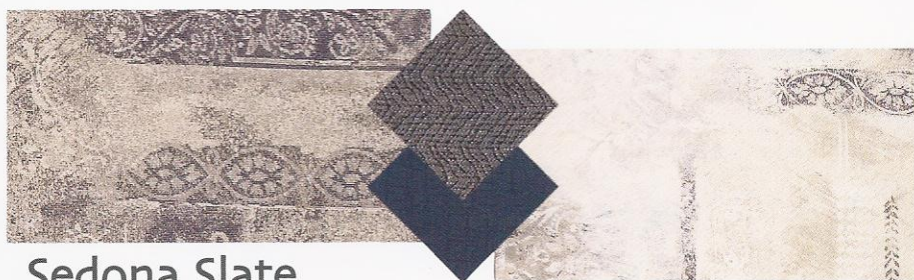
- 15,000 BTU A/C
- Exterior Shower
- Day-Night Shades
- Hide-a-Bed
- Ceiling Fan
- 8 Cu.' Refer
- Flex Foil Insulation
- Heated Holding Tanks and Enclosed Underbelly

Additional Options:

- Bedroom Slide
- Aluminum Frame
- Aluminum Wheels
- Fantastic Fan (LR/BR/CARGO)
- Recliners
- Roll Out Tray
- Satellite Dish
- Table and Four Chairs
- CSA (Canadian Required)
- "G" Rated Tires
- Add-a-Wall
- Pull Down Screen Wall
- Extra 55 Gal. Fresh Water Tank
- Second Exterior Entry Door in Cargo
- Diamond Plate on Door
- Diamond Plate on Floor
- Diamond Plate on Sidewalls
- Scorpion Liner on Door/Floor/Sidewalls
- Anti-Skid on Door/Floor
- Ramp Extension/Threshold Ramp
- Tie Down Rings/Rails
- Wired for Generator
- Install Onan Generator (LP/Gas)
- Fuel Cell w/Pump Station w/Fuel Gauge
- Bedroom Loft (37' and up)
- Power Bed in Cargo



Regency Wheat



Sedona Slate



Summer Terrace

Transport, protect
and secure your
valuable
recreational
machines
whenever and
wherever
you travel.

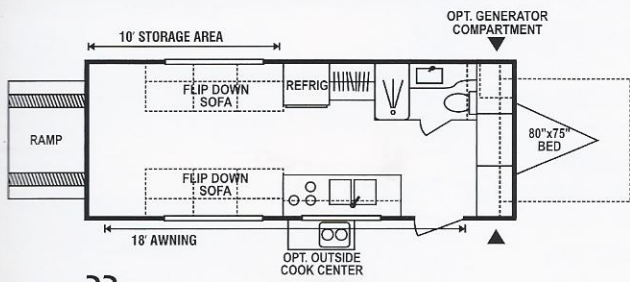


SPORTSMEN™

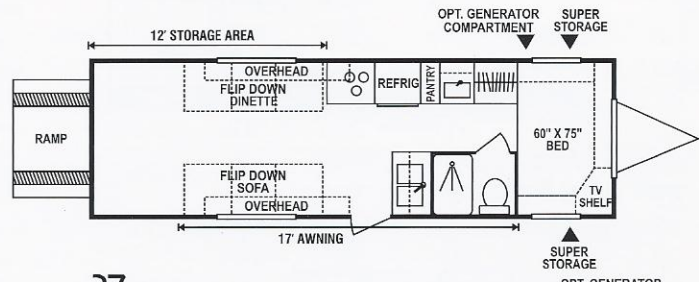
Sportstar

Travel Trailers

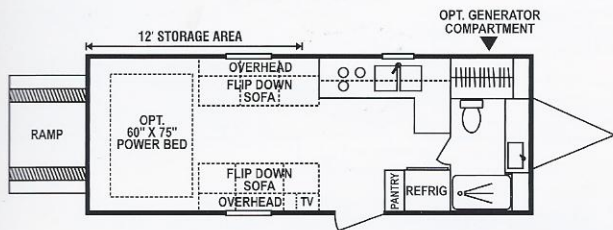
The innovative adjustable height queen bed can store near the ceiling and out of the way until needed. The optional variable height power track adjustment allows positioning at normal bed height or conveniently above your stowed cargo.



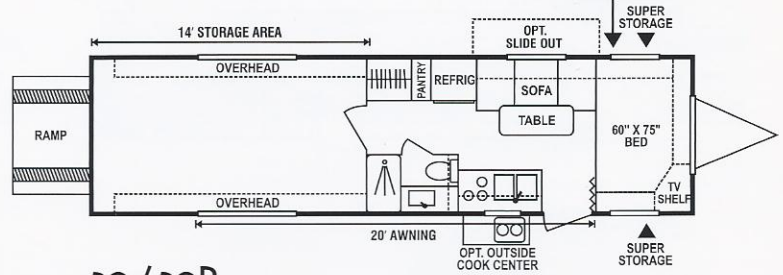
22



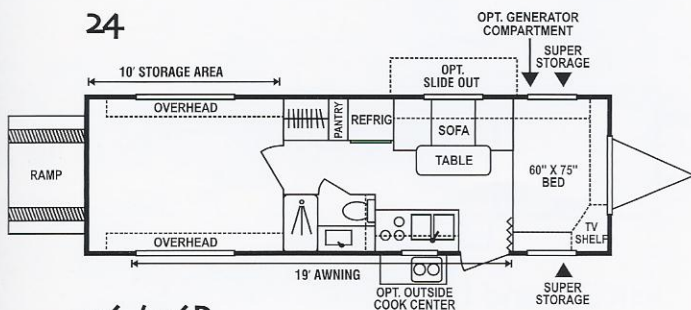
27



24

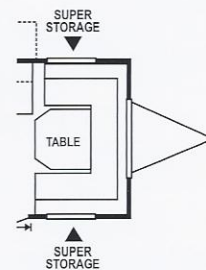


30 / 30P

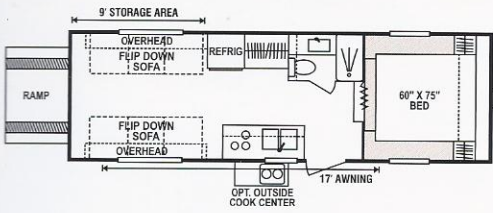


26 / 26P

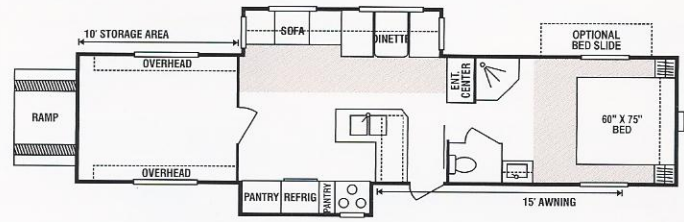
Optional
U-Shape
Dinette



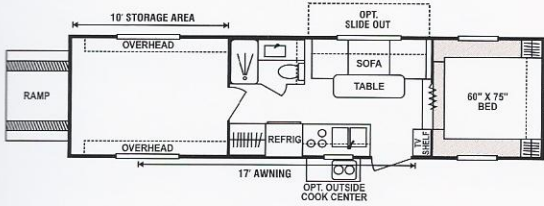
Sportsmen™ Fifth Wheel Floorplans



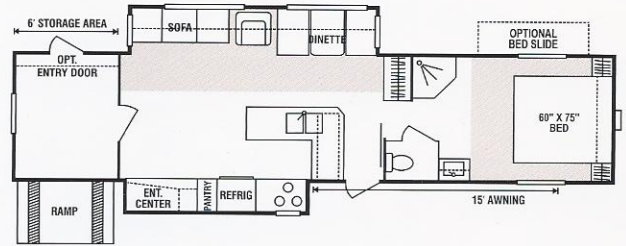
25 Mid Profile



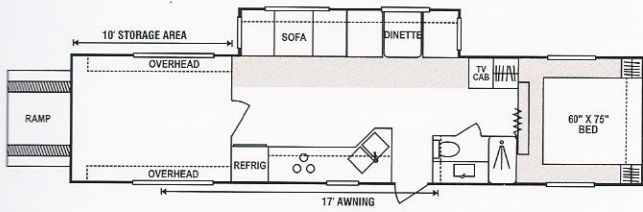
37K Stand Up Profile



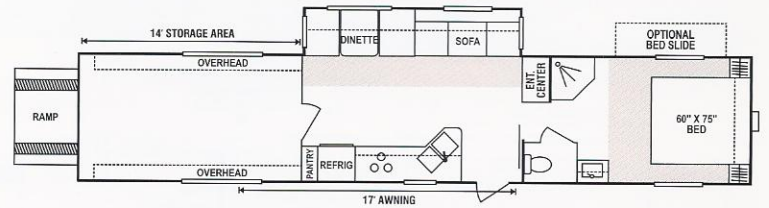
29 / 29P Mid Profile



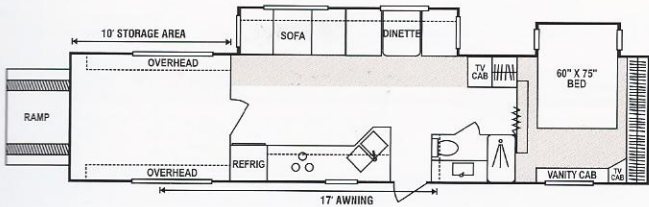
37KG Stand Up Profile



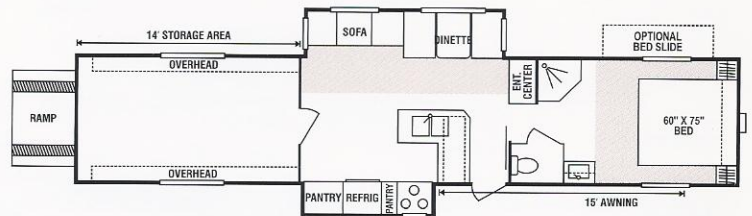
33P Mid Profile



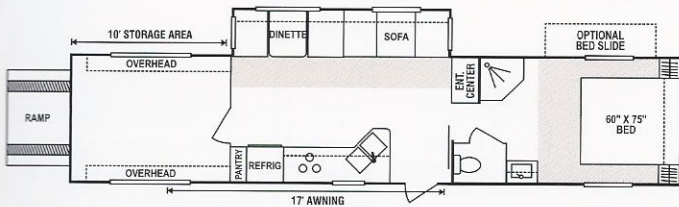
41P Stand Up Profile



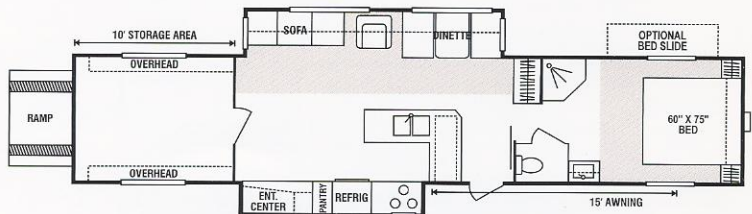
35Px2 Stand Up Profile



41K Stand Up Profile



37P Stand Up Profile



41KG Stand Up Profile

Sportsmen™ Sportster Fifth Wheels

	25	29	33P	35Px2	37P	37K	37KG	41P	41K	41KG
UVW (Unloaded Vehicle Wt.)	5222	6300	9080	9520	9410	9940	10600	10030	10970	11910
Dry Hitch Wt.	1100	1960	1620	1700	2080	2505	2740	2640	3320	3060
Dry Axle Wt.	4122	4340	7460	7820	7330	7435	7860	7390	7651	8850
NCC (Net Carrier Capacity)	2778	3700	4520	4080	4330	7000	6340	7970	7029	6090
GVWR	8000	10000	13600	13600	13740	16940	16940	18000	18000	18000
Interior Height	82"	82"	82"	82"	82"	82"	82"	82"	82"	82"
Exterior Height	126"	138"	138"	138"	142"	142"	142"	142"	142"	142"
Exterior Length	26'3"	31'6"	34'6"	35'4"	38'1"	38'1"	39'4"	42'1"	42'1"	42'6"
Exterior Width	102"	102"	102"	102"	102"	102"	102"	102"	102"	102"
Fresh Water Cap. (gal.)	55	55	55	55	55	55	55	55	55	55
Opt. Water Cap. (gal.)	N/A	55	55	55	55	55	55	55	55	55
Waste Water Cap. (gal.)	38	38	38	38	50	50	50	50	50	50
Gray Water Cap. (gal.)	38	38	38	38	50	50	50	50	50	50
LP Gas Cap. (lbs.)	60	60	60	60	60	60	60	60	60	60
Furnace BTUs (1,000s)	20	20	30	30	30	30	30	30	30	30
Tire Size	15"	15"	16"	16"	16"	16"	16"	16"	16"	16"

Mahogany



Mocha



Raisin



Uptown



Sportsmen™ Sportster Travel Trailers

	22	24	26	27	30
UVW (Unloaded Vehicle Wt.)	4398	5410	5560	5910	6660
Dry Hitch Wt.	600	740	900	960	1040
Dry Axle Wt.	3798	4670	4660	4950	5120
NCC (Net Carrier Capacity)	2602	4590	4440	4090	3840
GVWR	7000	10000	10000	10000	10000
Interior Height	78"	78"	78"	78"	78"
Exterior Height	121"	129"	129"	129"	129"
Exterior Length	26'	26'9"	31'4"	31'3"	34'8"
Exterior Width	96"	102"	96"	96"	96"
Fresh Water Cap. (gal.)	55	55	55	55	55
Opt. Water Cap. (gal.)	N/A	55	55	55	55
Waste Water Cap. (gal.)	38	38	38	38	38
Gray Water Cap. (gal.)	38	38	38	38	38
LP Gas Cap. (lbs.)	60	60	60	60	60
Furnace BTUs (1,000's)	16	20	20	20	20
Tire Size	14"	15"	15"	15"	15"



says if you
enjoy cycles
and ATVs...
take 'em along!



Sportsmen™ Fifth Wheel & Travel Trailer Décor

Designer Package:

- Sink Covers
- Stove Covers
- Bathroom Accessories
- Shower Door
- Postrest Mattress *

Designer Plus Package:

- 8 Cu.' Refrigerator w/Raised Oak Panel
- R14 Roof Insulation
- 40" Trunk Door in PSO *
- Fantastic Fan
- Foot Flush Toilet
- Assist Grab Handle
- Stabilizer Jacks
- Enclosed Pin Box
- Slider Windows in PSO *
- Security Light on DS
- Black Water Tank Flush System

Mandatory Living Package:

- Am-Fm CD Player w/Four Speakers
- 13,500 BTU A/C (Ducted std. 26' and up)
- Awning
- Microwave
- Pillow for Sofa
- Oven
- 6 Cu.' Refrigerator
- TV Shelf in Bedroom
- TV Antenna w/Booster
- Cable Hookup
- Tub Surround
- Night Shades
- Mirrored Doors in Slide Outs
- Acrylic White Sink w/High-Rise Faucet
- Raised Oak Mortis and Tenon Overhead Cabinet Doors
- Deluxe Roller Drawer Guides
- Deluxe Globe Light
- Fluorescent Light over Kitchen Sink
- Wood Edge Countertop
- Sink Cover
- Skylight over Shower
- Porch Light on ODS
- Hitch Light
- Smoke Detector
- LP Detector
- Chrome Rings and Caps
- 6 Gal. Gas/Elec. Water Heater
- Exterior Shower

Additional Options Available:

- Fiberglass Exterior
- Bedroom Slide (35' and up)
- 15,000 BTU A/C
- Ladder
- Power Jacks
- Outside Cook Top (N/A on 33' and up)
- Outside Grill
- Shocks
- Spare Tire
- Spare Tire Carrier/Hoist
- Spare Tire Cover
- 50 Amp. Service
- Tinted Windows
- Aluminum Wheels
- CSA (Canada Required)
- Add-a-Wall
- Pull Down Screen Wall
- Extra 55 Gal. Fresh Water Tank *
- Second Exterior Entry Door in Cargo
- Diamond Plate on Door
- Diamond Plate on Floor
- Diamond Plate on Sidewalls
- Scorpion Liner on Door/Floor/Sidewalls
- Anti-Skid on Door/Floor
- Ramp Extension/Threshold Ramp
- Tie Down Rings/Rails
- Wired for Generator
- Install Onan Generator
- Fuel Cell w/Pump Station
- Bedroom Loft (37' and up)
- Power Bed in Cargo *

* if applicable

2X2 WARRANTY – The K-Z 2x2 Warranty is a manufacturer's warranty. Each K-Z product is warrantied to the original purchaser for twenty-four (24) months from the original date of purchase. Coverage includes appliances, components, construction and FULL structure. Our warranty is also transferable within the first two (2) years for a small processing fee. For a copy of the warranty with full terms and conditions, ask your local K-Z Dealer or visit our web site at <http://www.kz-rv.com>.

VEHICLE LOADING – Every effort has been made to provide the greatest number of options for the recreational owner. Each owner is responsible to

select loads allowing the recreational vehicle to remain within the manufacturer's specified chassis weight limits. Do not overload the recreational vehicle.

DRY WEIGHTS are based on standard features only and do not include optional equipment. Carrying capacity is determined by subtracting UVW from GVWR and includes fluids, options and cargo. Liquid capacities and weights are approximations only.

NOTE: This information is intended as a guide only. Weights of individual vehicles are approximate. Consult your Owner's Manual for complete loading, weighing and towing instructions.



Outside Cook Top (option) *



Exterior Shower



Ramp Extension/Threshold Ramp (option)



Pull Down Screen Wall (option)

Awarded to K-Z
Four Years in a Row!



Dealer:

Jerry's Trailers & Campers
2601 South 13th St.
Norfolk, NE 68701
(402) 371-1306

Sportsmen™

NEW VISION®
Sportsman



K-Z • 9270 West U.S. 20 • Shipshewana, IN 46565
E-Mail kz@kz-rv.com • www.kz-rv.com



Due to continual research and advances, manufacturer reserves the right to change specifications, design, price and equipment without notice, and assumes no responsibility for any error in this literature. Some items shown are not included as standard or optional equipment.

©2005K-Z