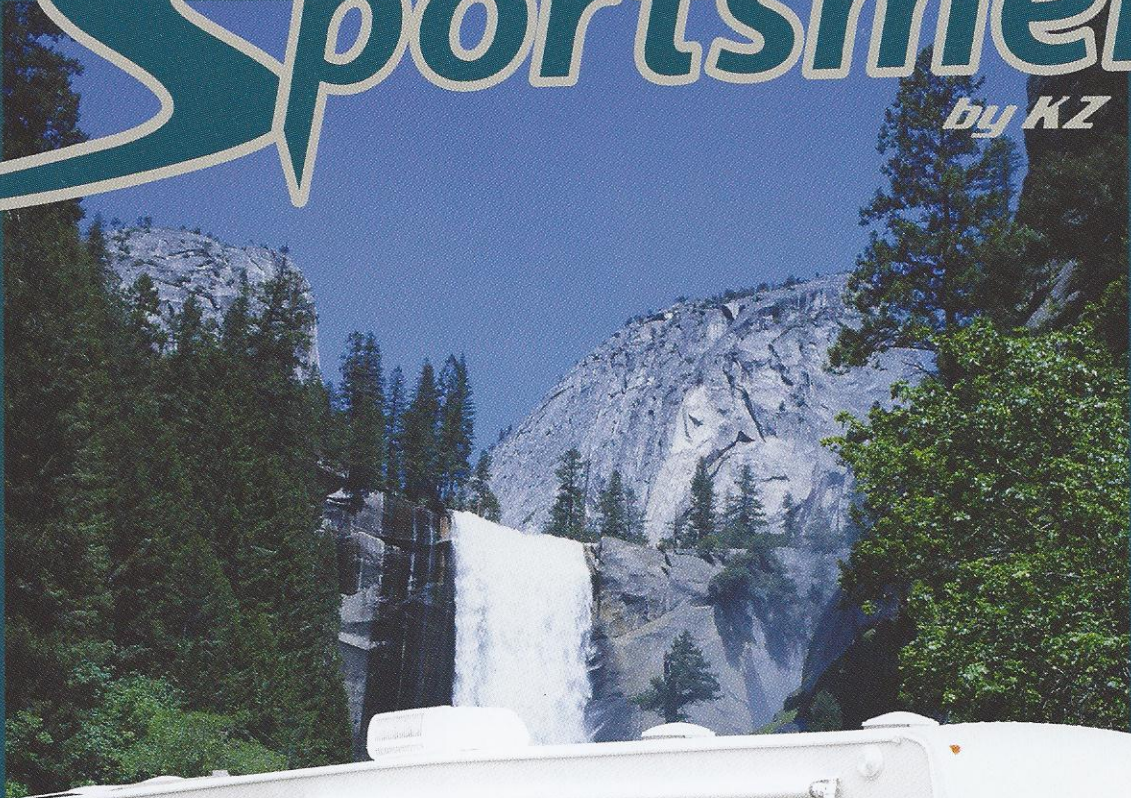


# Sportsmen™

by KZ

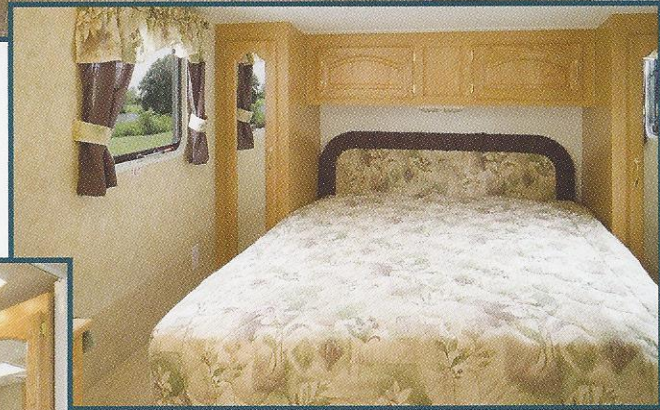
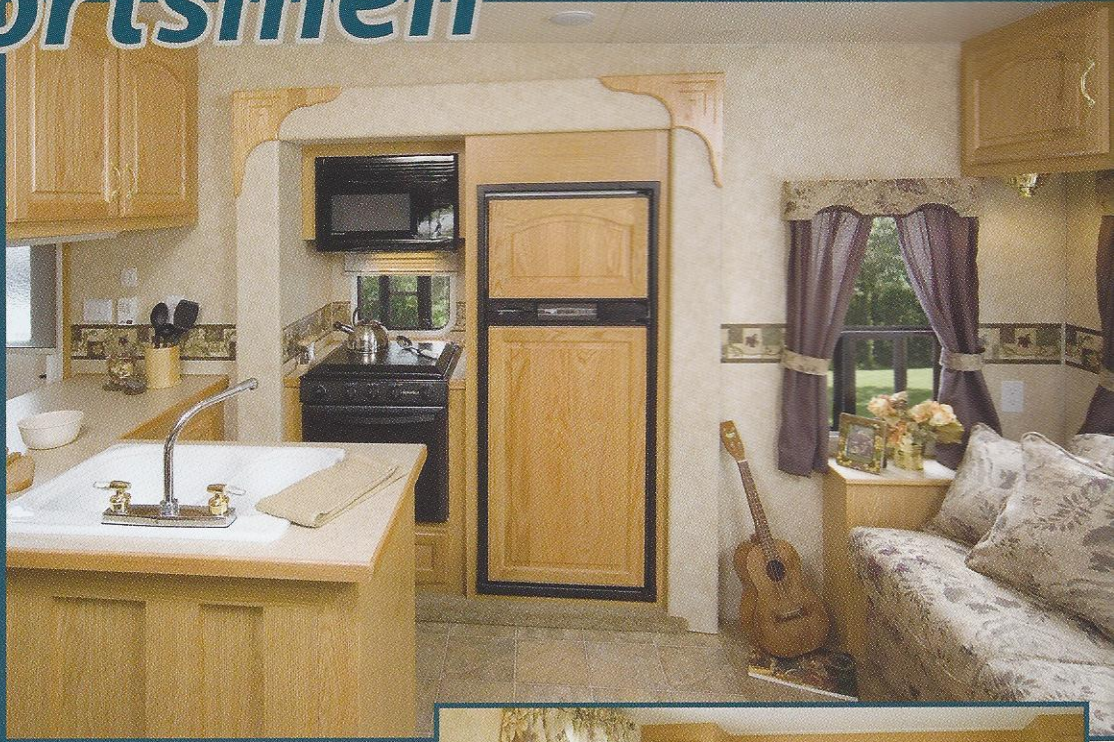


Travel Trailers & Fifth Wheels  
also, Sportsmen™-Lites and Truck Campers

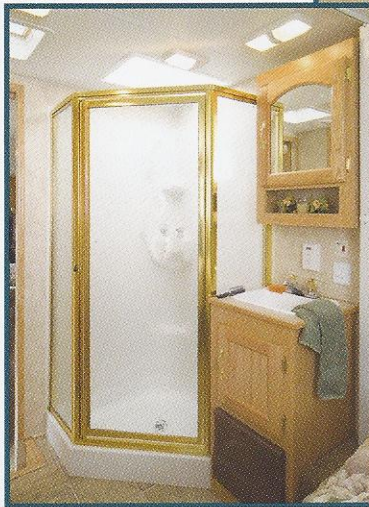
# Sportsmen™

by KZ

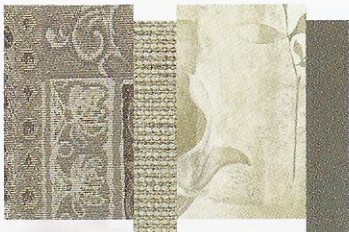
The model 2457Px2 Mid Profile fifth wheel, shown here in Raisin interior décor, features two room-expanding slide outs. The centralized peninsula-style kitchen provides storage and meal time efficiency. A large rear picture window over the sofa and adjacent dining area, complete with entertainment cabinet, will keep you in the center of all the action as you visit with family and friends.



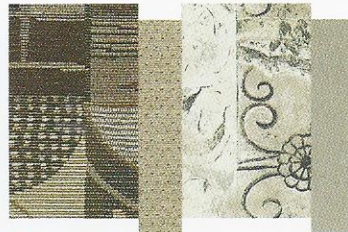
The bath and bed provide a quiet retreat at days' end, so refresh and relax, in **KZ** comfort. See for yourself why after 33 years of RV design and development, **KZ** is a name you can trust.



## Sportsmen™ Décor Options



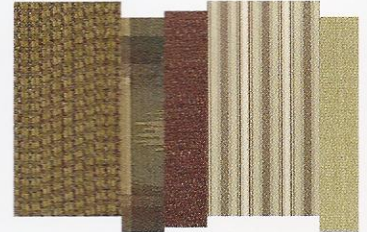
Mohogany



Mocha

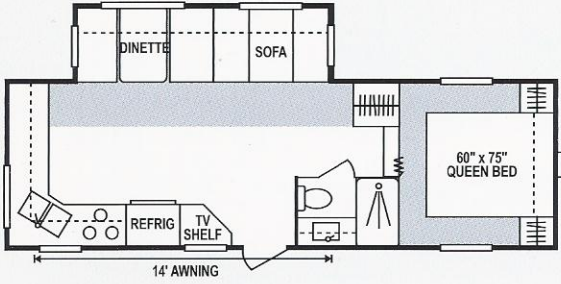


Raisin

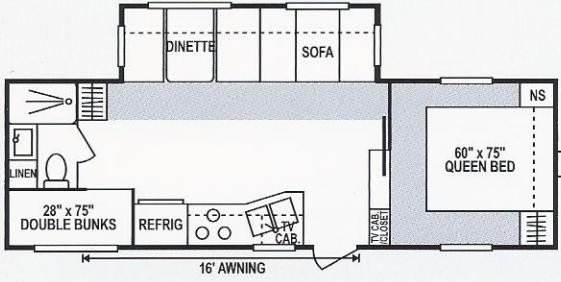


Uptown

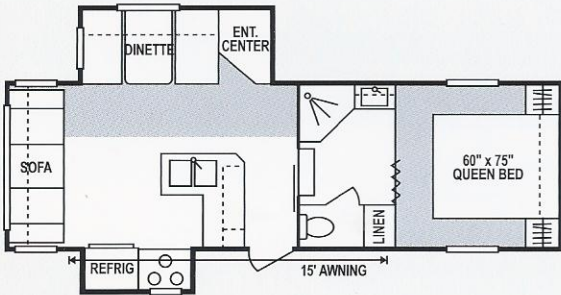
# Sportsmen™ Fifth Wheels



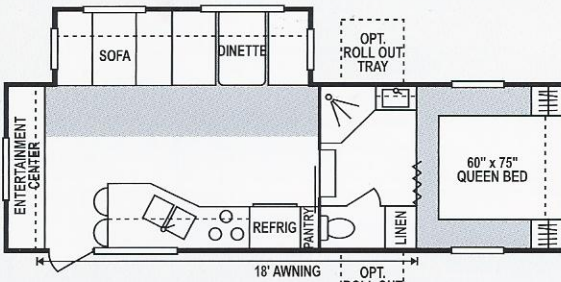
2452P Mid Profile



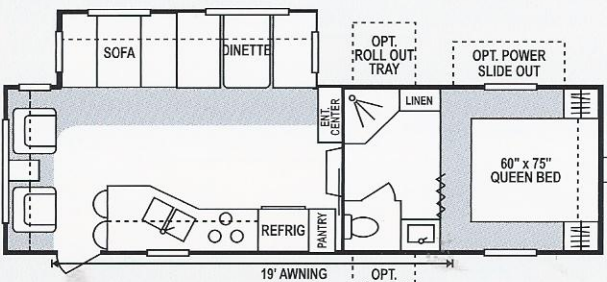
2454P Mid Profile



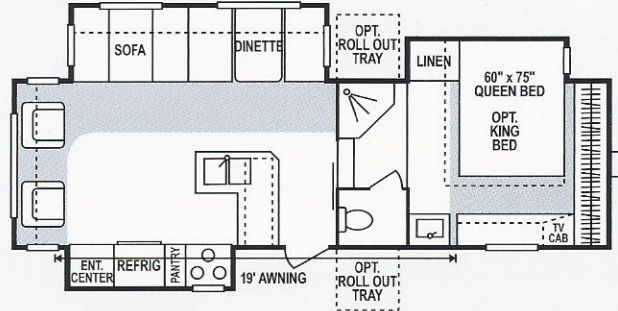
2457Px2 Mid Profile



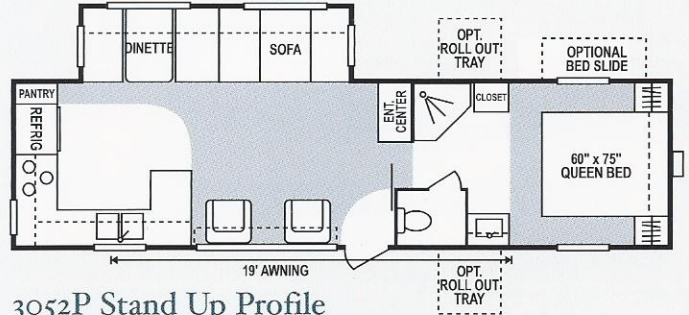
2653P Mid Profile



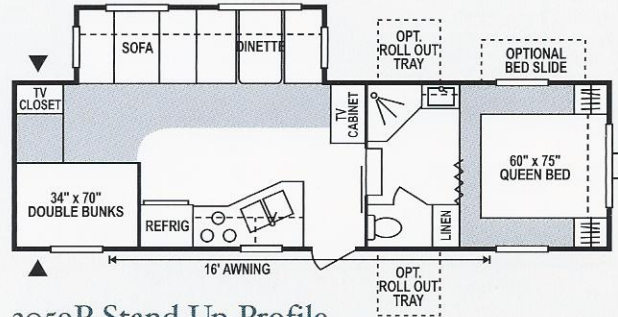
2852P Stand Up Profile



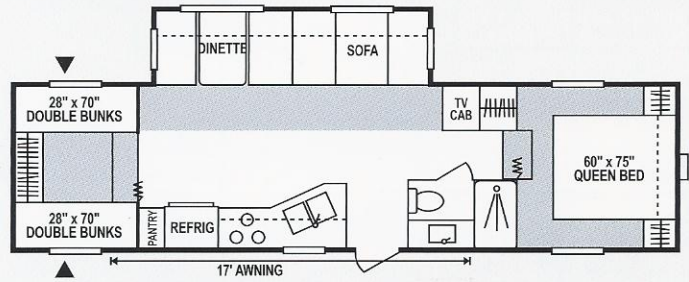
2857Px3 Stand Up Profile



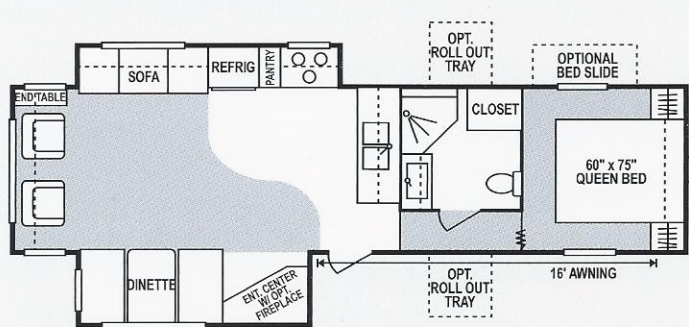
3052P Stand Up Profile



3059P Stand Up Profile

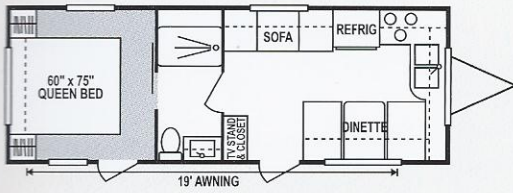


3156PSS Mid Profile

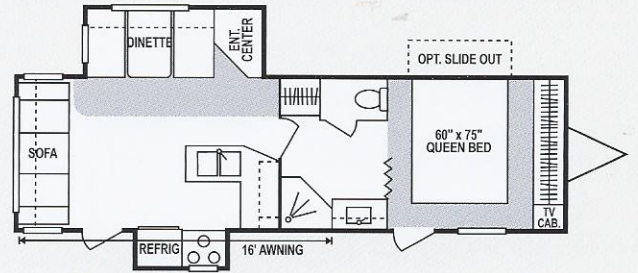


3354Px2 Stand Up Profile

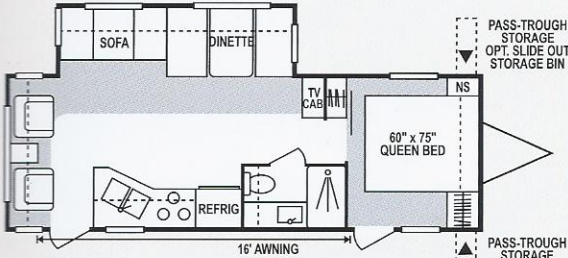
# Sportsmen™ Travel Trailers



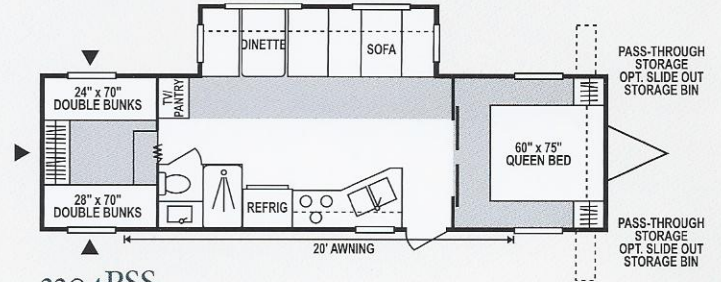
2503



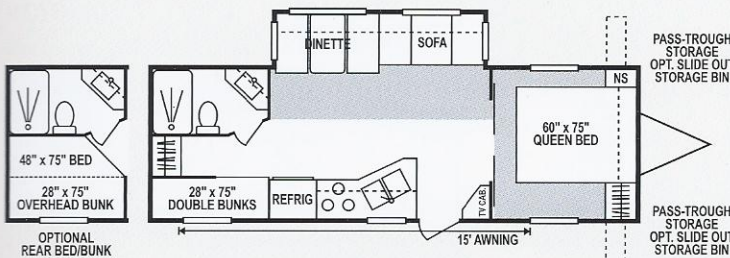
3105Px2



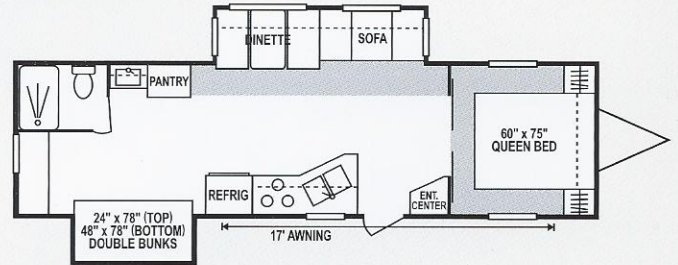
2604P



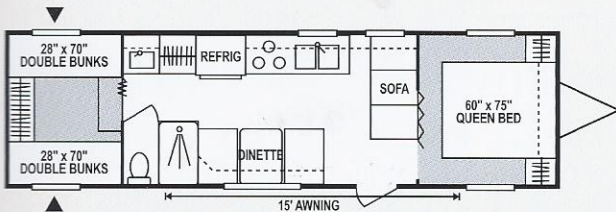
3204PSS



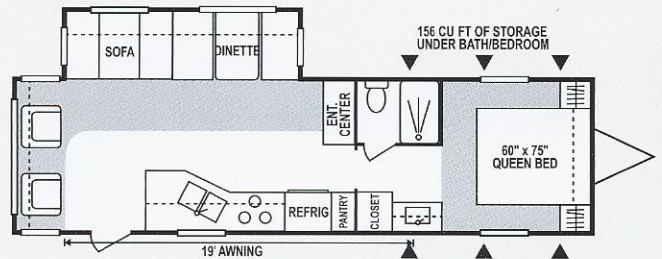
2903P



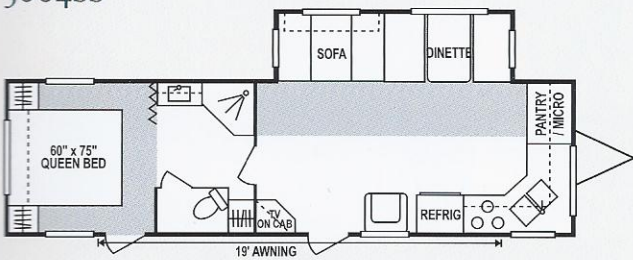
3205Px2



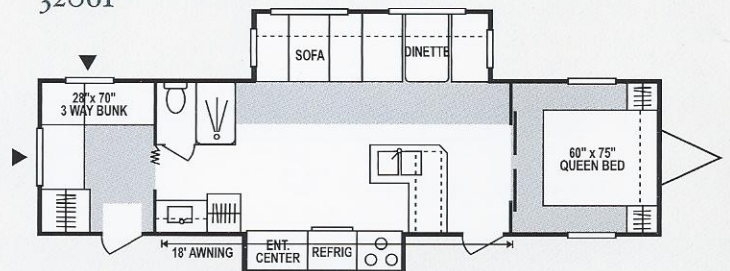
3004SS



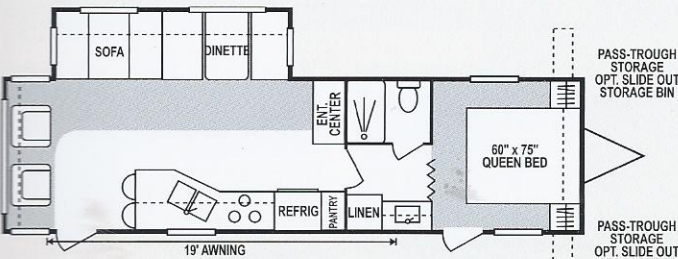
3206P



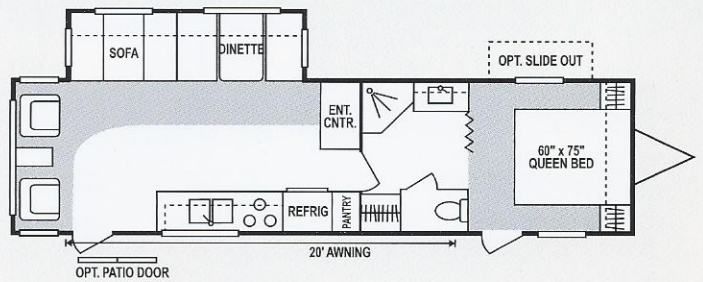
3102P



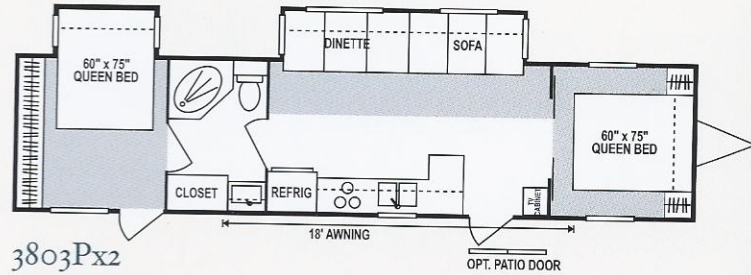
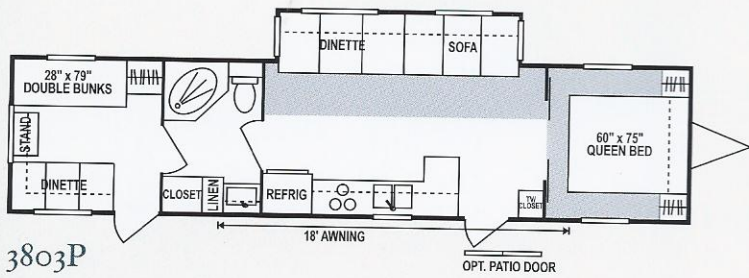
3501Px2



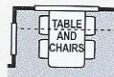
3103P



3513P



### Floorplan Options



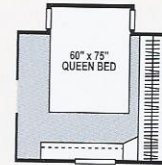
Option 4



Option 5



Option 6



Option 7 -  
Bedroom Slide Out  
(Fifth Wheel)



Option 8 -  
Rear Triple  
Bunk Bedroom

## Sportsmen™ Travel Trailers

	2503	2604P	2903P	3004SS	3102P	3103P	3105Px2	3204PSS	3205Px2	3206P	3501Px2	3513P	3803P	3803Px2
UVW (Unloaded Vehicle Wt.)	4500	5960	6080	5060	6740	6850	7140	6880	7140	7520	7740	7500	7780	8724
Dry Hitch Wt.	600	780	580	720	1150	860	920	660	940	940	840	540	1100	1100
Dry Axle Wt.	3900	5180	5500	4340	5590	5990	6220	6220	6200	6580	6900	6960	6680	7230
NCC (Net Carrier Capacity)	2368	4040	3920	2660	3260	3150	2860	3120	2860	2480	2260	2500	2220	1670
GVWR	6868	10000	10000	7720	10000	10000	10000	10000	10000	10000	10000	10000	10000	10000
Interior Height	78"	82"	82"	82"	82"	82"	82"	82"	82"	82"	82"	82"	82"	82"
Exterior Height	119"	129"	129"	119"	129"	129"	129"	129"	129"	138"	129"	129"	129"	129"
Exterior Length	26'3"	28'9"	29'11"	31'11"	31'8"	32'4"	32'1"	32'7"	34'3"	33'4"	35'6"	35'6"	38'8"	38'8"
Exterior Width	94"	96"	96"	96"	96"	96"	96"	96"	96"	96"	96"	96"	96"	96"
Refrigerator (cu. feet)	6	6	6	6	6	6	6	6	6	6	6	6	6	6
Water Heater Cap. (gal.)	6 G/E*	6 G/E*	6 G/E*	6 G/E*	6 G/E*	6 G/E*	6 G/E*	6 G/E*	6 G/E*	6 G/E*	6 G/E*	6 G/E*	6 G/E*	6 G/E*
Fresh Water Cap. (gal.)	40	40	40	40	40	40	40	40	40	40	40	40	40	40
Waste Water Cap. (gal.)	32	32	32	32	32	32	32	32	32	32	32	32	32	32
Gray Water Cap. (gal.)	32	32	32	32	32	32	32	32	32	32	32	32	32	32
LP Gas Cap. (lbs.)	60	60	60	60	60	60	60	60	60	60	60	60	60	60
Furnace BTUs (1,000s)	20	25	25	25	25	30	30	30	30	30	30	30	30	30
Tire Size	15"	15"	15"	15"	15"	15"	15"	15"	15"	15"	15"	15"	15"	15"

\* DSI Water Heater

## Sportsmen™ Fifth Wheels

	2452P	2454P	2457Px2	2653P	2852P	2857Px2	3052P	3059P	3156PSS	3354Px2
UVW (Unloaded Vehicle Wt.)	6500	6460	7220	6740	7490	8240	7510	7840	6800	9040
Dry Hitch Wt.	1380	1260	1380	1480	1100	1620	1700	1900	1200	1880
Dry Axle Wt.	5120	5200	5840	5260	6390	6620	5810	5720	5600	7160
NCC (Net Carrier Capacity)	3500	3540	2730	3260	4410	3660	3490	4060	3200	2960
GVWR	10000	10000	10000	10000	11900	11900	11000	11900	10000	12000
Interior Height	82"	82"	82"	82"	82"	82"	82"	82"	82"	82"
Exterior Height	136"	136"	136"	136"	142"	142"	142"	142"	136"	146"
Exterior Length	26'5"	26'6"	26'8"	27'	30'1"	30'1"	31'7"	30'8"	32'10"	33'9"
Exterior Width	96"	96"	96"	96"	96"	96"	96"	96"	96"	96"
Refrigerator (cu. feet)	6	6	6	6	6	6	6	6	6	6
Water Heater Cap. (gal.)	6 G/E*	6 G/E*	6 G/E*	6 G/E*	6 G/E*	6 G/E*	6 G/E*	6 G/E*	6 G/E*	6 G/E*
Fresh Water Cap. (gal.)	55	55	55	55	55	55	55	55	55	55
Waste Water Cap. (gal.)	32	32	32	32	32	32	32	32	32	32
Gray Water Cap. (gal.)	32	32	50	50	50	50	50	50	50	50
LP Gas Cap. (lbs.)	60	60	60	60	60	60	60	60	60	60
Furnace BTUs (1,000s)	25	25	25	25	25	25	25	25	25	25
Tire Size	15"	15"	15"	15"	15"	15"	15"	15"	15"	15"

\* DSI Water Heater

## Standard Package – Mandatory Living Package:

- Am-Fm CD Player w/Four Speakers
- 13,500 BTU A/C (Ducted Std. 25' and Up)
- Awning
- Microwave
- Pillows for Sofa
- Oven
- 6 Cu.' Refrigerator
- TV Shelf in Bedroom
- TV Antenna w/Booster
- Cable Hookup
- Tub Surround
- Night Shades
- Mirrored Doors in Slideouts
- Acrylic White Sink w/High-Rise Faucet
- Raised Oak Mortise and Tenon Overhead Cabinet Doors
- Deluxe Roller Drawer Guides
- Deluxe Globe Dinette Light
- Fluorescent Light over Kitchen Sink
- Wood Edge Countertop
- Sink Cover
- Sky Light over Tub
- Porch Light on ODS
- Hitch Light
- Smoke Detector
- LP Detector
- Chrome Rings and Caps
- Slideout Gas Bottle Trays
- Adjustable Jake Plate
- 40 Gal. Fresh Water Tank
- Exterior Shower
- 6 Gal. Gas/Electric DSI Water Heater

## Optional Designer Package:

- Sink Covers
- Stove Cover
- Bathroom Accessories
- Shower Door
- Postrest Mattress
- Foot-Flush Toilet
- Assist Grab Handle
- Stabilizer Jacks
- Enclosed Pin Box (Fifth Wheel)

## Optional Designer Plus Package:

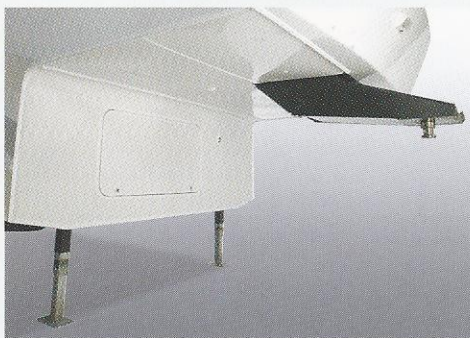
- 8 Cu.' Refrigerator w/Raised Oak Panel
- R14 Roof Insulation
- 40" Trunk Door in PSO \*
- Fantastic Fan
- Slider Windows in PSO \*
- Security Light on DS
- Black Tank Flush System
- Chrome Bumper Cover

## Additional Options Available:

- Fiberglass Exterior
- 15000 BTU A/C
- Hide-a-Bed \*
- Ladder
- Power Jacks
- Pull Out Pantry \*
- Recliner \*
- Outside Grill
- Shocks
- Spare Tire
- Spare Tire Carrier
- Spare Tire Cover
- Table and Four Chairs
- Tinted Windows
- CSA (Canada Only)

\* where applicable

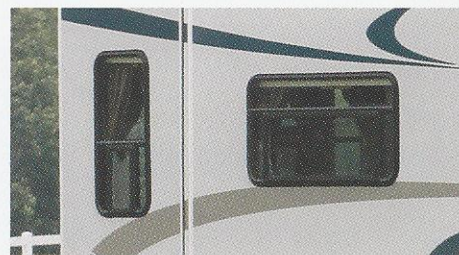
## Exterior Features:



Enclosed Pinbox and Pinbox Extension (optional)



13,500 BTU A/C (standard)  
15,000 BTU A/C (optional)



Tinted/Safety Windows (optional)



Outside Cooktop or Outside Grill



Exterior Shower



Assist Grab Handle (optional)



Exterior Security Light (optional)

# Sportsmen<sup>TM</sup> Lite by KZ

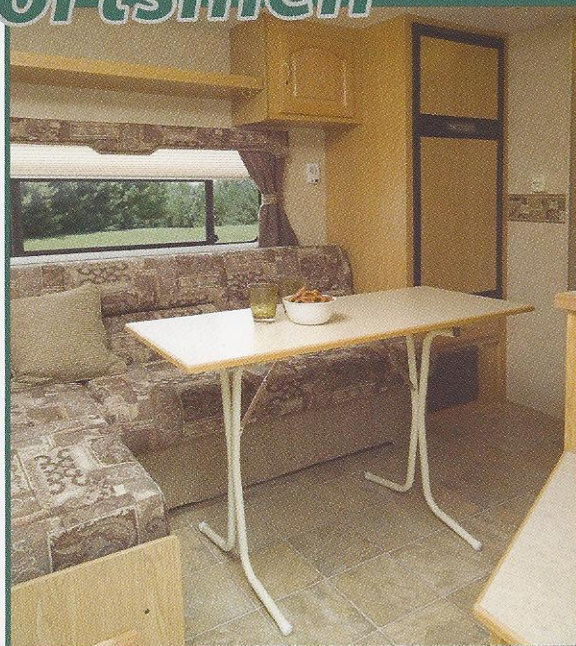


Travel Trailers  
& Fifth Wheels

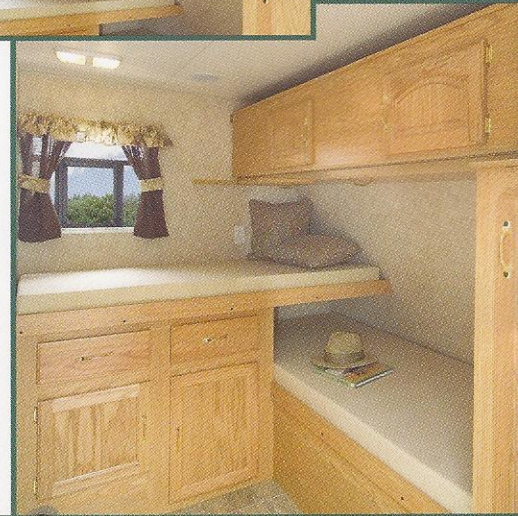
# Sportsmen™

by KZ

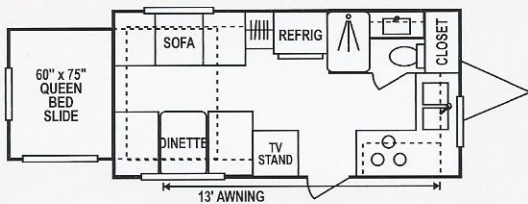
A Sportsmen Lite will fulfill the desire for affordable comfort and flexibility for a couple or a family. Choose a size and design that best fits your needs then add the options that top your wish list.



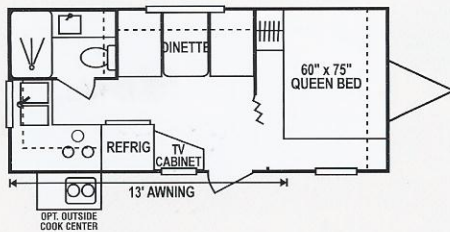
Upper bunk, fold-up feature.



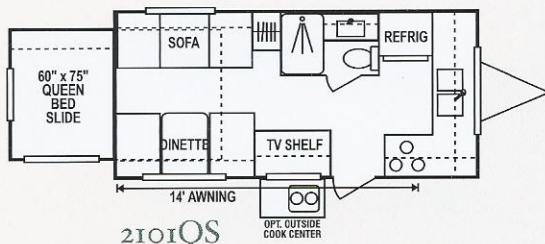
## Sportsmen™ -Lite Travel Trailers



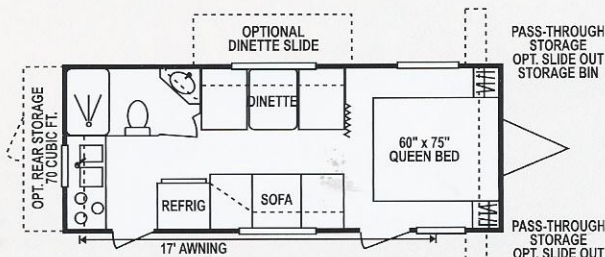
1702QS



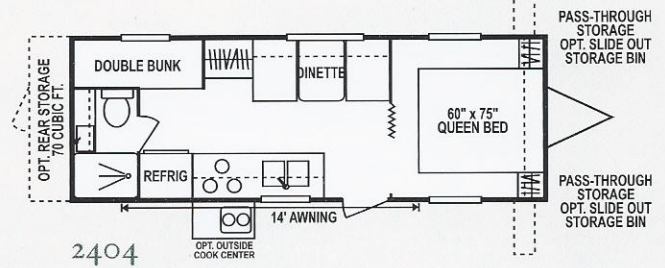
2002



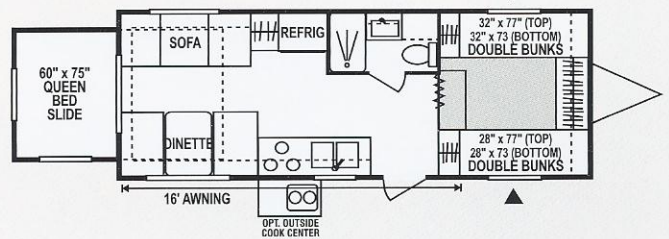
2101QS



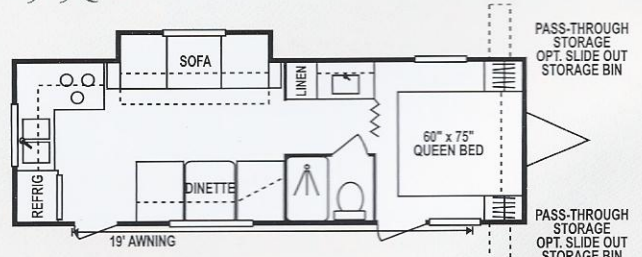
2303 / 2303P



2404

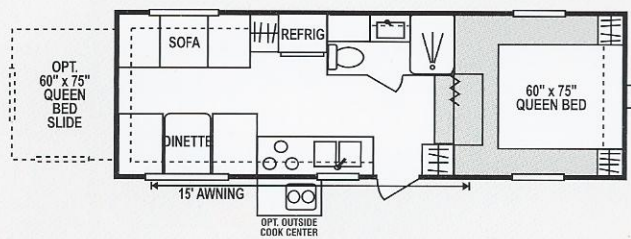


2505QSS

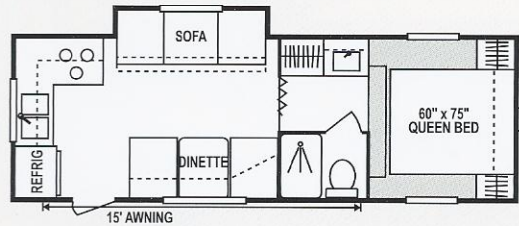


2605P

# Sportsmen™ -Lite Fifth Wheels



2253 / 2253QS



2352P

## Sportsmen™ -Lite Travel Trailers & Fifth Wheels

	1702QS	2002	2101QS	2303	2404	2505QSS	2605P	2253	2352P
UVW (Unloaded Vehicle Wt.)	3881	3523	4286	3583	4310	4951	5133	4483	4851
Dry Hitch Wt.	500	380	510	340	330	620	400	940	800
Dry Axle Wt.	3381	3143	3776	3243	3980	4331	4733	3543	4051
NCC (Net Carrier Capacity)	1631	1985	2714	1929	1202	1917	1735	1785	1417
GVWR	5512	5512	7000	5512	5512	6868	6868	6268	6268
Interior Height	78"	78"	78"	78"	78"	78"	78"	78"	78"
Exterior Height	102"	102"	102"	102"	102"	102"	102"	134"	134"
Exterior Length	19'11"	21'6"	22'4"	24'4"	26'	26'10"	27'9"	24'5"	24'4"
Exterior Width	96"	96"	96"	96"	96"	96"	96"	94"	96"
Refrigerator (cu. feet)	6	6	6	6	6	6	6	6	6
Water Heater Cap. (gal.)	6 G/E*	6 G/E*	6 G/E*	6 G/E*	6 G/E*	6 G/E*	6 G/E*	6 G/E*	6 G/E*
Fresh Water Cap. (gal.)	40	40	40	40	40	40	40	40	55
Waste Water Cap. (gal.)	32	32	32	32	32	32	32	32	32
Gray Water Cap. (gal.)	32	32	32	32	32	32	32	32	32
LP Gas Cap. (lbs.)	60	60	60	60	60	60	60	60	60
Furnace BTUs (1,000s)	20	16	20	20	20	20	20	20	20
Tire Size	14"	14"	14"	14"	14"	14"	14"	14"	14"

\* DSI Water Heater

### Standard Package – Mandatory Living Package:

- 13,500 BTU A/C
- Awning
- Microwave
- Oven
- Stove Cover
- Am-Fm Stereo w/CD Player
- Acrylic White Sink w/High-Rise Faucet
- Outside Cooktop or Outside Grill
- Double Step
- TV Antenna w/Booster
- Cable Hookup
- TV Shelf in Bedroom
- Night Shades
- Deluxe Roller Drawer Guides
- Wood Edge Countertop
- 30 lbs. Gas Bottles
- Exterior Shower
- Pillows for Sofa
- Sky Light over Tub
- Tub Surround
- Fluorescent Light over Kitchen Sink
- Bathroom Accessories
- Porch Light on ODS
- Hitch Light
- Smoke Detector
- LP Detector
- Chrome Rings and Caps
- Raised Oak Mortise and Tenon Overhead Cabinet Doors
- 6 Gal. Gas/Electric DSI Water Heater w/ Winter By Pass Kit
- 40 Gal. Fresh Water Tank

### Additional Options Available:

- Ducted A/C (23' and Up)
- Fantastic Fan
- Shower Door
- Foot-Flush Toilet
- Assist Grab Handle
- Battery and Box
- Tinted/Safety Windows
- Straight Axles
- Spare Tire
- Spare Tire Carrier
- Spare Tire Cover
- 15" Tires
- Chrome Bumper Cover
- Power Jack
- Stabilizer Jacks

# Sportsmen<sup>TM</sup>

by KZ  
Truck Campers

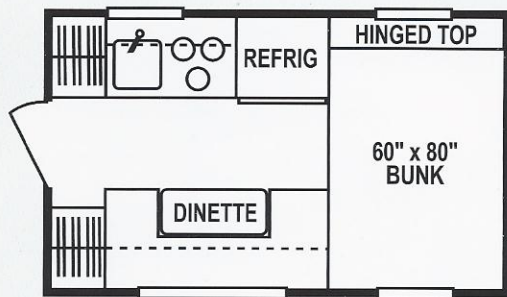


Standard  
Metal Siding



Optional  
Fiberglass Siding

# Sportsmen™ Truck Campers



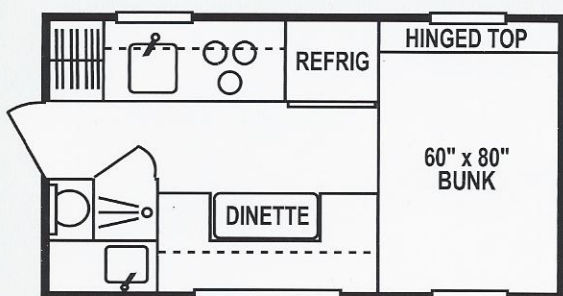
801

801\*

UVW (Unloaded Vehicle Wt.)	1600	Water Heater Cap. (gal.)	N/A
Interior Height	78"	Fresh Water Cap. (gal.)	20
Exterior Width	94"	Waste Water Cap. (gal.)	N/A
Exterior Length	8'	Gray Water Cap. (gal.)	N/A
Exterior Height**	85"	LP Gas Cap. (lbs.)	40
Refrigerator (cu. feet)	2.7		

\* Limited Models (all fiberglass) adds approximately 10% to total weight.

\*\* Exterior Height does NOT include air conditioner.



951

951\*

UVW (Unloaded Vehicle Wt.)	1960	Water Heater Cap. (gal.)	6
Interior Height	78"	Fresh Water Cap. (gal.)	20
Exterior Width	94"	Waste Water Cap. (gal.)	6
Exterior Length	9'5"	Gray Water Cap. (gal.)	6
Exterior Height**	85"	LP Gas Cap. (lbs.)	40
Refrigerator (cu. feet)	3.5		

\* Limited Models (all fiberglass) adds approximately 10% to total weight.

\*\* Exterior Height does NOT include air conditioner.

## Truck Camper Construction Features:

- 5/8" Tongue and Groove Plywood Floors
- .024 MESA Metal Sidewalls
- 2 x 2 Studs 16" O.C. and Closer
- Fiberglass Insulation R7 (Sidewalls and Roof)
- 3.6 LUAN Paneling
- 3.6 LUAN Ceiling Board
- One Piece Rubber Roof w/ 3/8" Deck Board
- 2 x 3 Tapered Rafters 16" O.C.

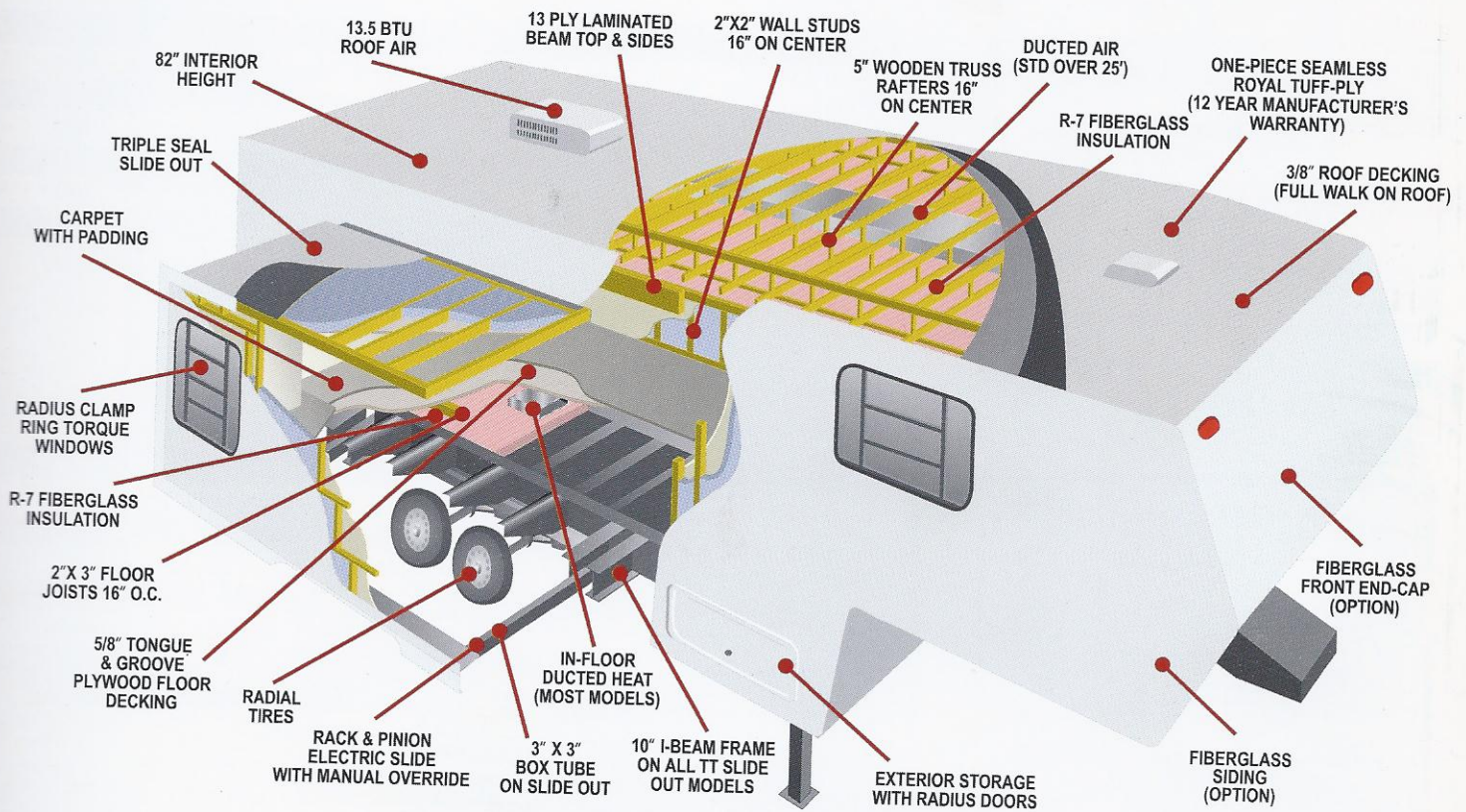
## Standard Features:

- Single Door Refrigerator
- 6 Gal. Water Heater (951)
- Three Burner Hot Plate
- Wired for A/C
- Sundeck
- Ladder
- Three Camper Jacks
- Converter
- Furnace
- Two 20 lb. Gas Bottles
- Rubber Roof

## Additional Options Available:

- Fiberglass Exterior
- TV Antenna
- TV Booster
- Stereo/Cassette
- Stereo/CD Player
- Water Heater DSI 6 Gal. Gas
- Water Heater DSI 6 Gal. Gas/Electric
- 16" Oven
- Stove Cover
- Sink Cover
- Toilet (801)
- Up and Out Doors
- Cabinet Bunk
- 7000 BTU A/C
- Four Screw Jacks
- Screw Jacks – Dually Ext. Set
- Canadian CSA
- Front Cap (Std. on Fiberglass Units)

# Sportsmen<sup>TM</sup> by KZ



Awarded to KZ  
Four Years in a Row!



## KZ's 2 x 2 Warranty

**2X2 WARRANTY** – The KZ 2x2 Warranty is a manufacturer's warranty. Each KZ product is warrantied to the original purchaser for twenty-four (24) months from the original date of purchase. Coverage includes appliances, components, construction and FULL structure. Our warranty is also transferable within the first two (2) years for a small processing fee. For a copy of the warranty with full terms and conditions, ask your local KZ Dealer or visit our web site at <http://www.kz-rv.com>.

**VEHICLE LOADING** – Every effort has been made to provide the greatest number of options for the recreational owner. Each owner is responsible to

select loads allowing the recreational vehicle to remain within the manufacturer's specified chassis weight limits. Do not overload the recreational vehicle.

**DRY WEIGHTS** are based on standard features only and do not include optional equipment. Carrying capacity is determined by subtracting UVW from GVWR and includes fluids, options and cargo. Liquid capacities and weights are approximations only.

**NOTE:** This information is intended as a guide only. Weights of individual vehicles are approximate. Consult your Owner's Manual for complete loading, weighing and towing instructions.

Dealer:

Jerry's Trailers & Campers  
2601 South 13th St.  
Norfolk, NE 68701  
(402) 371-1306



Due to continual research and advances, manufacturer reserves the right to change specifications, design, price and equipment without notice, and assumes no responsibility for any error in this literature. Some items shown are not included as standard or optional equipment.

©2005 KZ