

# Sandpiper

BY FOREST RIVER

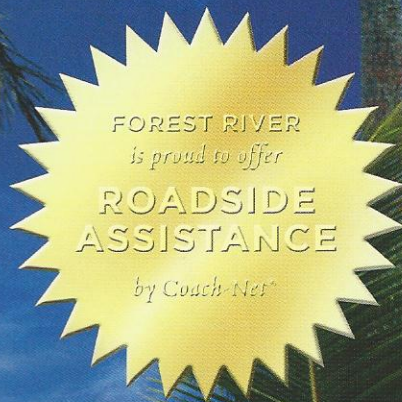
MODEL YEAR 2005 ISSUE NO.57

WWW.FORESTRIVERINC.COM



## ALWAYS PURE.

Forest River's exclusive full coach water filtration system. One of the best in the business. PAGE 5



FOREST RIVER  
is proud to offer  
**ROADSIDE  
ASSISTANCE**  
by Coach Net®

## PEACE OF MIND.

A little peace of mind offered to every Sandpiper consumer. PAGE 15



## DESIGNER INTERIORS.

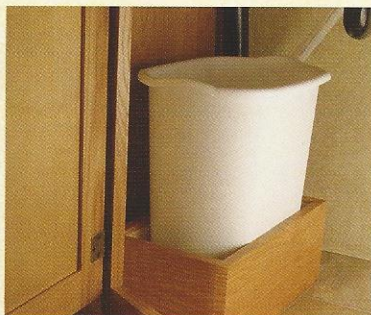
Sandpiper takes two steps forward in interior design. PAGE 7

## SUPERIOR STRUCTURE.

Light-weight aluminum superstructure. PAGE 9



**LUXURY FIFTH WHEELS AND TRAVEL TRAILERS**



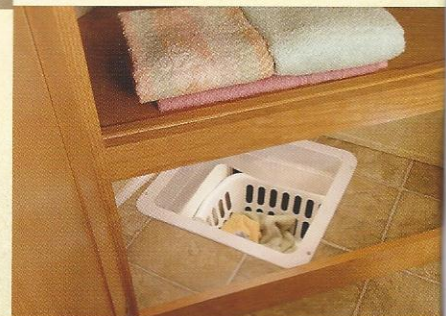
Enjoy our beautifully spacious oak fronted cabinets. Our all wood drawers glide open easily on metal tracks.

Trash cans are something that is overlooked by other brands. You will find our trash cans behind a cabinet door in it's own travel holder. (Available per floorplan)



With a convenient laundry chute to the lower level (in most Fifth Wheel models), you can get all your laundry out of sight and ready for the washing machine.

Ceiling skylights are another Sandpiper standard. The clear window allows for maximum ambient lighting.



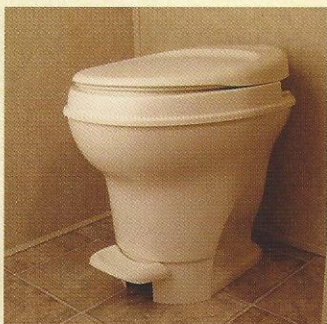
# Room to Breathe

FEEL FREE TO SPREAD OUT AND STRETCH IN A NEW SANDPIPER FIFTH WHEEL. OUR MAIN SLIDE-OUT IS 6'4" TALL TO GIVE YOU THE MOST LIVING SPACE POSSIBLE.

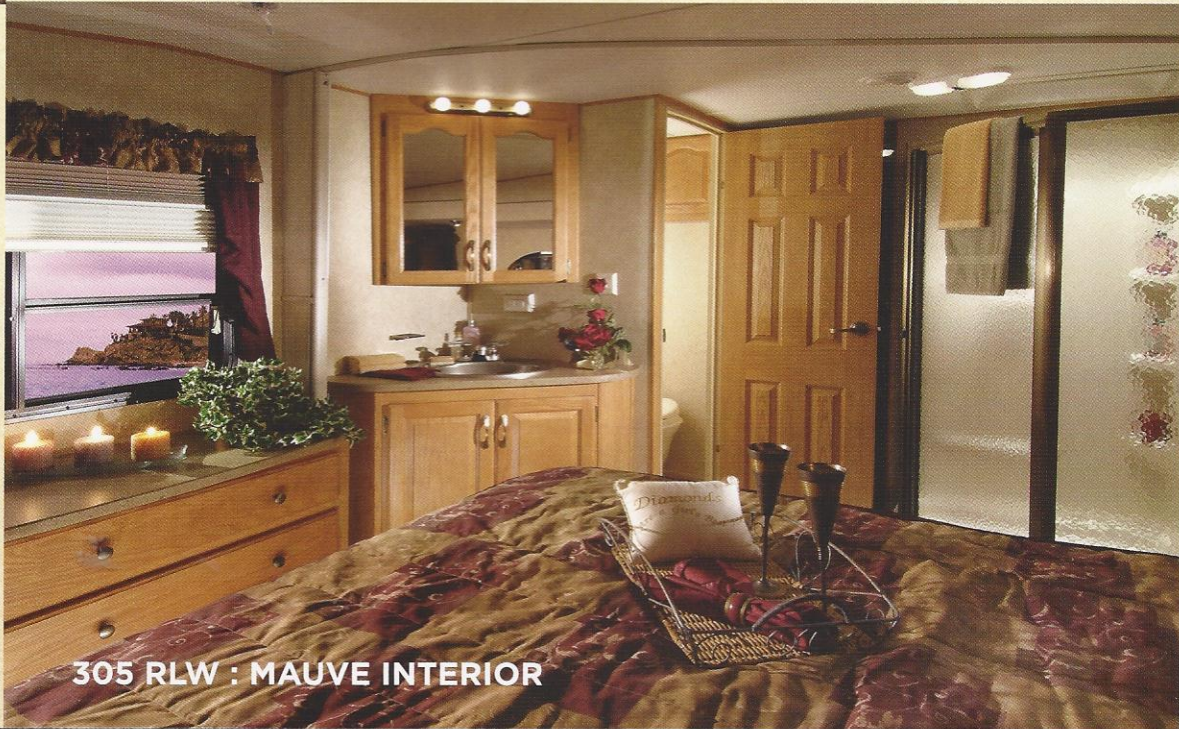
It is easy to see that Sandpiper has one of the most beautiful interiors on the market today. Designer draperies accent the rich sofa fabrics to complete the upscale look and feel of elegance. There's no question as to why Sandpiper's interiors are being compared with some of the highest end products in the industry.



Sandpiper's "open concept" master bedroom features plenty of room to relax and enjoy life on the road. The large adjoining bathroom features a neo-angle shower, oak cabinetry and a mirrored vanity.



Foot flush sanitary toilets are found standard in Sandpiper's spacious bathrooms



305 RLW : MAUVE INTERIOR

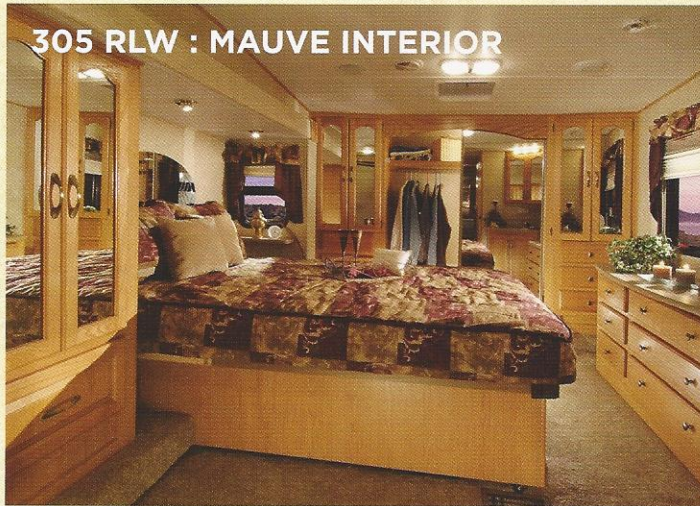
## *Now this is living.*

THE CENTER LIVING ROOM MODEL (RIGHT) OFFERS ABUNDANT COUNTER SPACE AND BEAUTIFUL CABINETS. WHILE SITTING IN THE SOFA OR SWIVEL CHAIR, YOU CAN GAZE OUT OF THE HUGE PICTURE WINDOW.

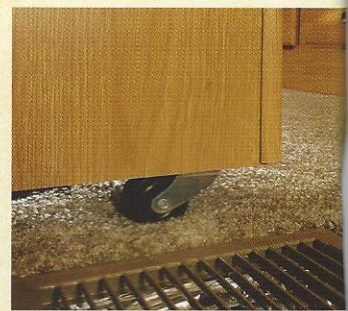
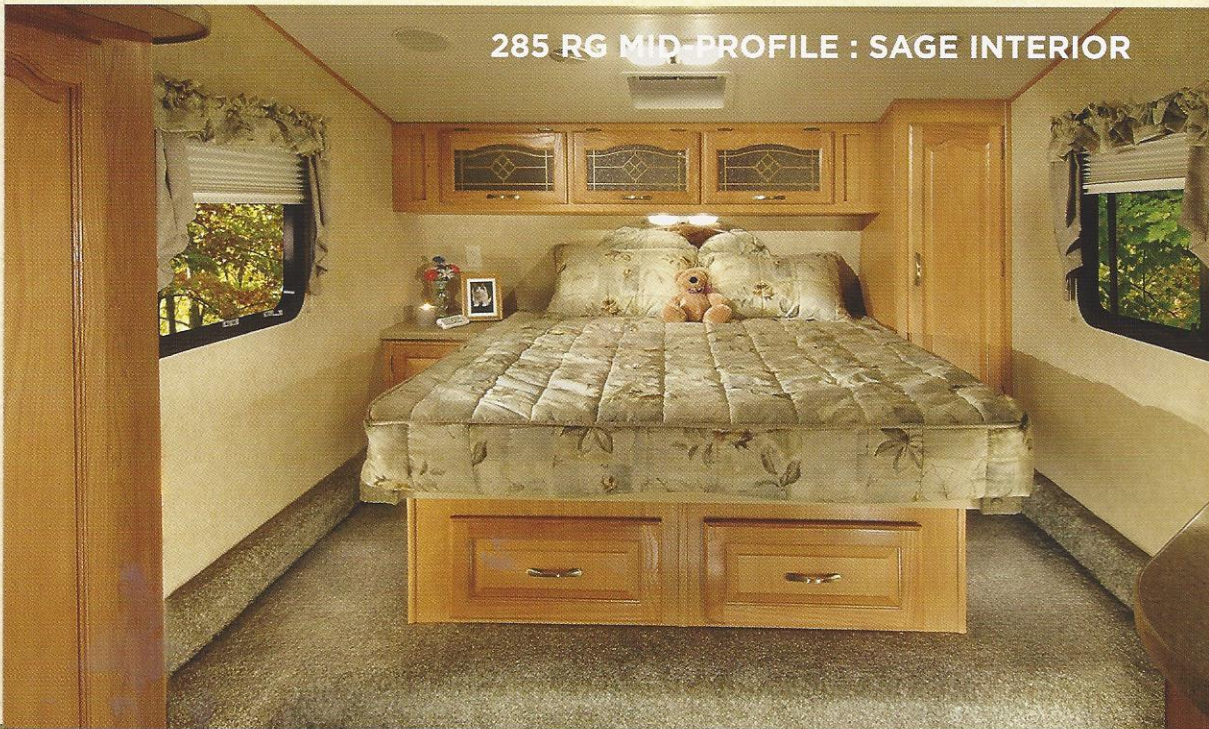
An abundance of space and quality construction are hallmarks of a Sandpiper. From the convenience of the well-equipped kitchen, to the comfort of the living room you will certainly not lack for refined living. Amenities include ceiling fans, floor vents, and an excellent ventilation system.

From the mirrored overhead cabinetry, to the large front wardrobes, Sandpiper's bedrooms will wow you and make you wish you had this much convenience at home!

**305 RLW : MAUVE INTERIOR**



**285 RG MID-PROFILE : SAGE INTERIOR**



Bed casters are standard on all bed slide-out models to ensure the life of your carpet.



Washer and dryer hook-ups are an optional convenience to maximize living on the road. (Per floorplan. Fifth wheels only)



There is nothing like a pleasant breeze to keep the air moving throughout your Sandpiper. Our ceiling fans will provide you with plenty of quiet comfort.



Drinking pure water is an important health issue. Sandpiper features the WaterPur™ whole-house water filtration system. It filters out impurities and odor from all of the water entering your trailer, which means healthier tap water for you and your family. It is hard to believe that Forest River is one of the only manufacturers with this feature.



Sandpiper's optional aluminum alloy wheels add style and flair to your RV. All Sandpipers come standard with radial tires.



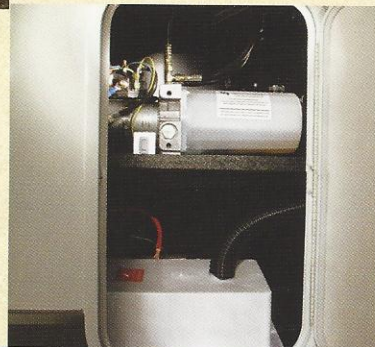
You will have no problem getting on board with the retractable, lighted triple entry steps.



130 cubic feet of unobstructed pass through storage allows for large items to be easily and conveniently stored out of the way.



Your hydraulic slide pump (with manual override) and battery box are located on the door side of every Sandpiper Fifth Wheel model for easy access.



To add an even more residential feel, the optional atrium window is another first from Sandpiper.



You can cook up a storm and take hot showers without worry because the Sandpiper is equipped with dual 30lb LP tanks with auto changeover.



# Designer Interiors.

THE NEWEST OF THE SANDPIPER INTERIORS IS THE "STONE" DECOR PACKAGE (LEFT). IT FEATURES A SOLID COLORED SOFA WITH FEATURE FABRIC CHAIRS. THIS FOLLOWS THE HUGE TREND OF UPSCALE INTERIOR DESIGN.

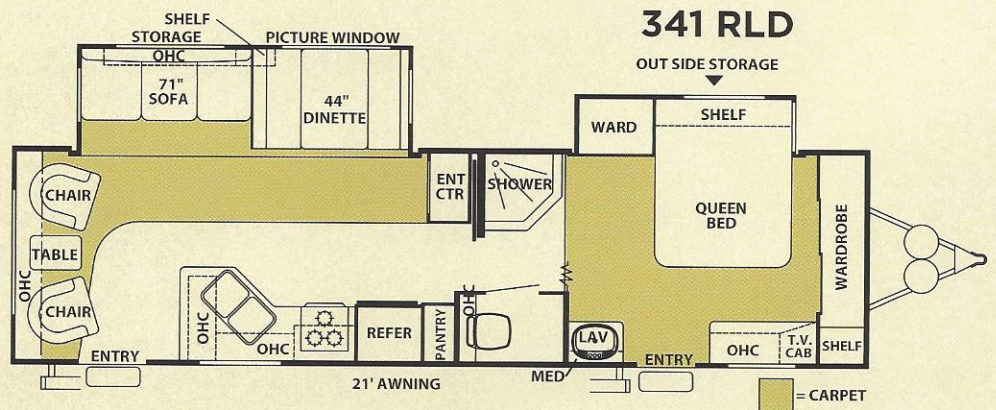
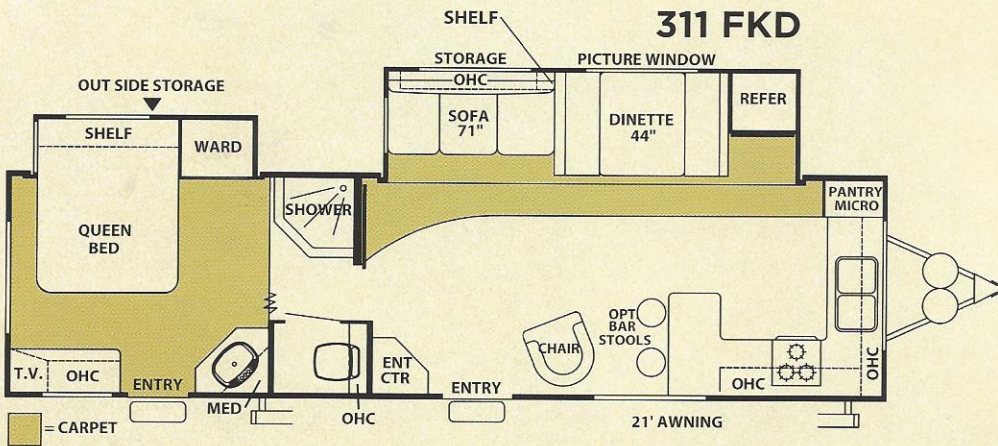
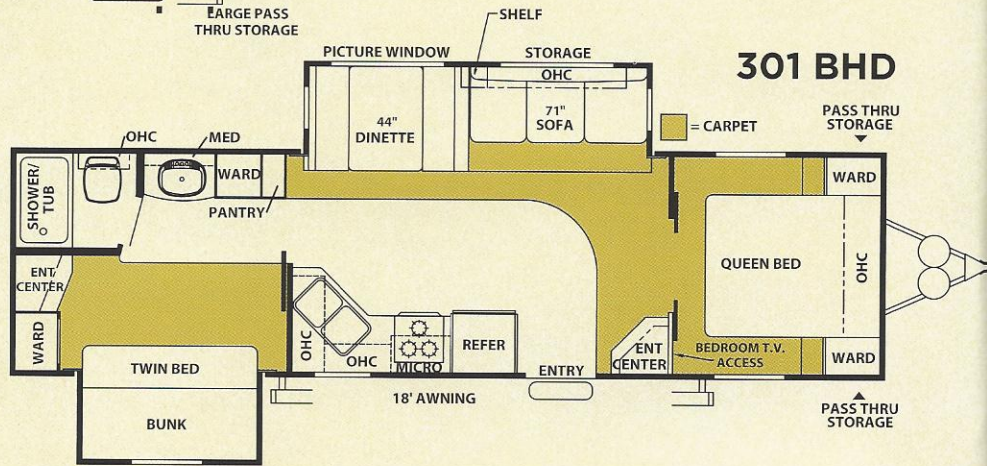
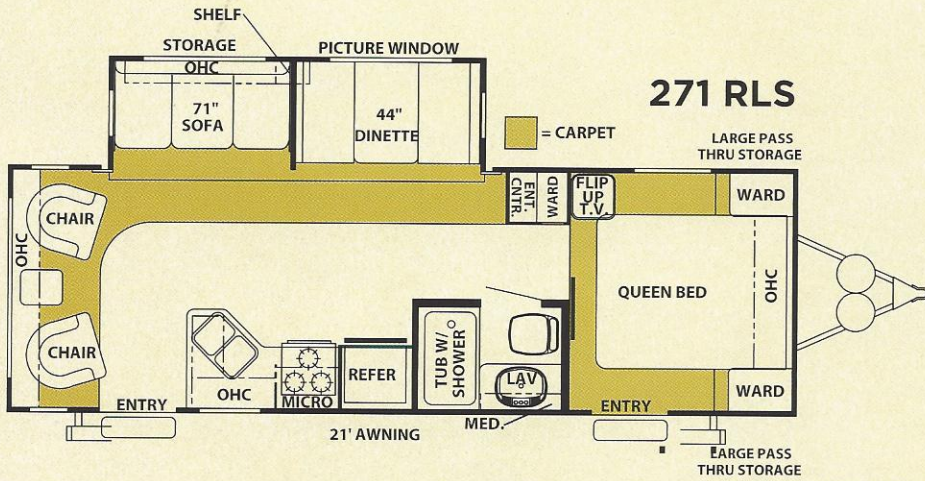


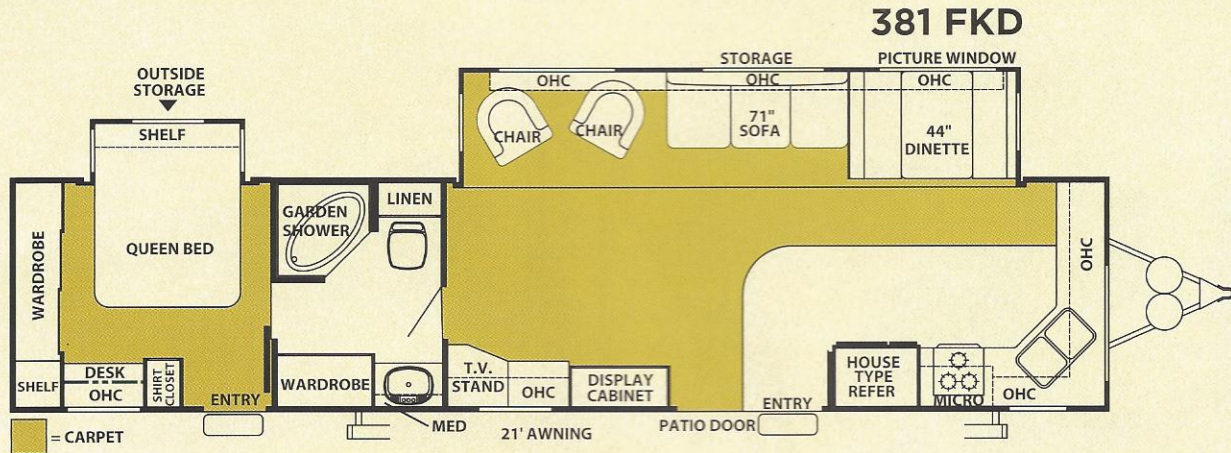
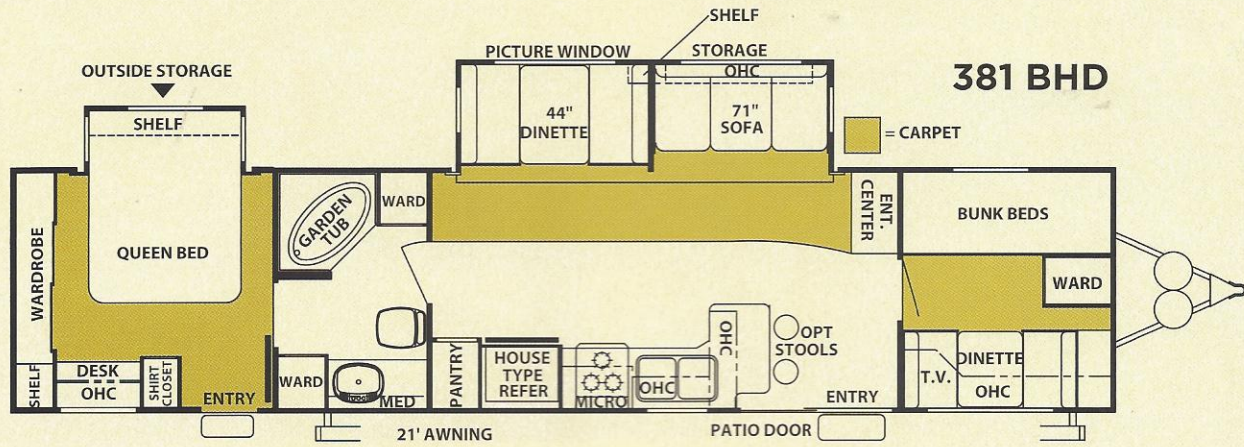
Food preparation is a snap in your expansive Sandpiper kitchen. From the double bowl sink to the carousel microwave, everything is in easy reach. So go ahead, invite some guests, pop some popcorn and put on a movie in your comfy living room.

**341 RLT : TAN INTERIOR**



# Travel Trailer Floorplans





### TRAVEL TRAILER SPECIFICATIONS

Model	271RLS	301BHD	311FKD	341RLD	381BHD	381FKD
Hitch weight	840	750	1,120	1,040	1,030	1,600
Axle weight	6,240	7,220	7,290	7,770	8,275	8,010
Ship weight*	7,080	7,970	8,410	8,810	9,305	9,610
GVWR	11,000	10,910	11,280	11,200	11,190	11,760
Exterior Length	29' 4"	34' 8"	34' 4"	33' 9"	38' 10"	41' 10"
Exterior Height	11'5"	11'5"	11'5"	11'5"	11'9"	11'9"
Awning	21'	18'	21'	21'	21'	21'
Gray Water Cap.	27 Gal.	54 Gal.	57 Gal.	30 Gal.	27 Gal.	57 Gal.
Black Water Cap.	27 Gal.	30 Gal.	27 Gal.	27 Gal.	27 Gal.	27 Gal.
Fresh Water Cap.	41 Gal.	48 Gal.	48 Gal.	48 Gal.	48 Gal.	48 Gal.

Pictured above is our laminated vacuum-bonded construction. Light-weight welded aluminum structure is widely regarded as the highest quality construction in the industry.

\* Ship weights do not include options. ~ Not available at time of printing. Model number does not necessarily reflect the overall length of a particular unit.

# Sandpiper Construction



**MOTORIZED RADIUS ROOF.**  
(12 YR. WARRANTY)

**13.5 K BTU AIR STD.**

**FIBERGLASS INSULATION**

**SEAMLESS RUBBER ROOF**  
(12 YR. WARRANTY)

**5" TRUSS ROOF RAFTERS**  
(16" ON CENTER)

**3/8" ROOF DECKING**  
(FULL WALK-ON ROOF)

**CENTRAL AIR STD.**  
(ALL MODELS)

**LIGHTED TRIPLE ENTRY STEPS**

**RADIAL TIRES**

**10" I-BEAM POWDER-COATED FRAME**

**FOLDING ENTRY ASSIST HANDLE**

**ULTRA LUBE AXLES**

**5/8" TOUNGE AND GROOVE PLYWOOD FLOORING**

**TINTED WINDOWS**

**LAMINATED VACUUM BONDED ALUMINUM SIDEWALLS**

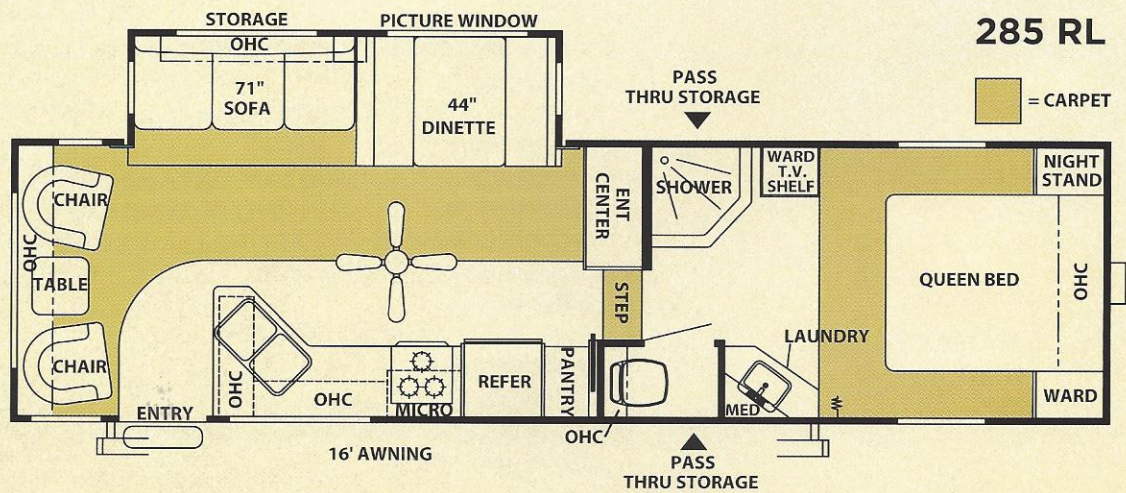
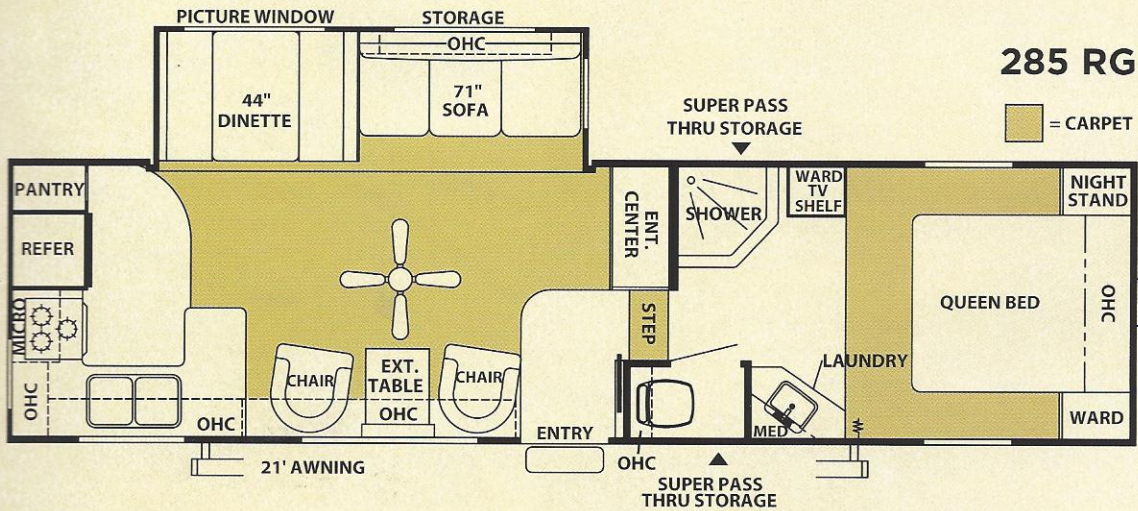
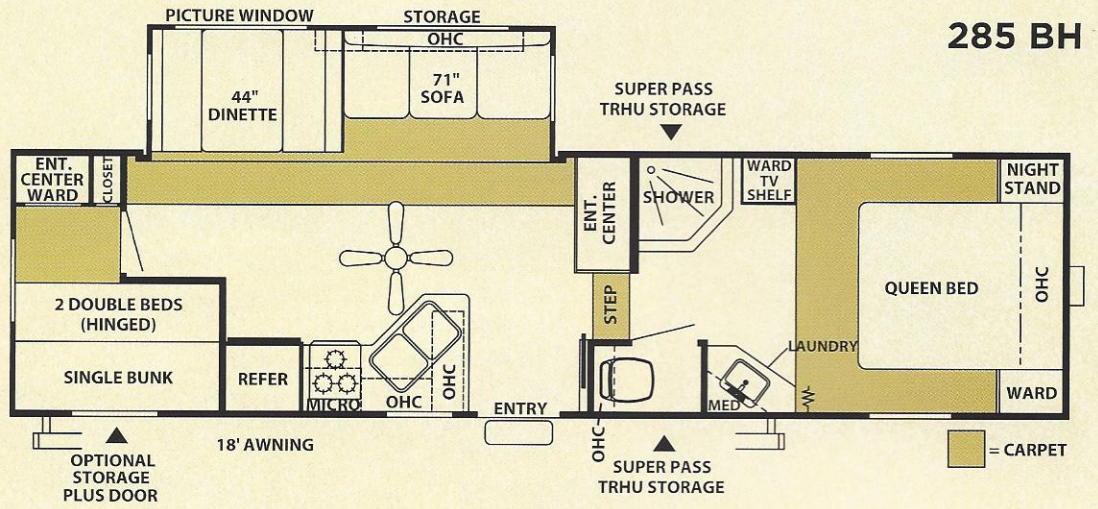
**300Z CARPET WITH PADDING**

**POWER FRONT JACKS**

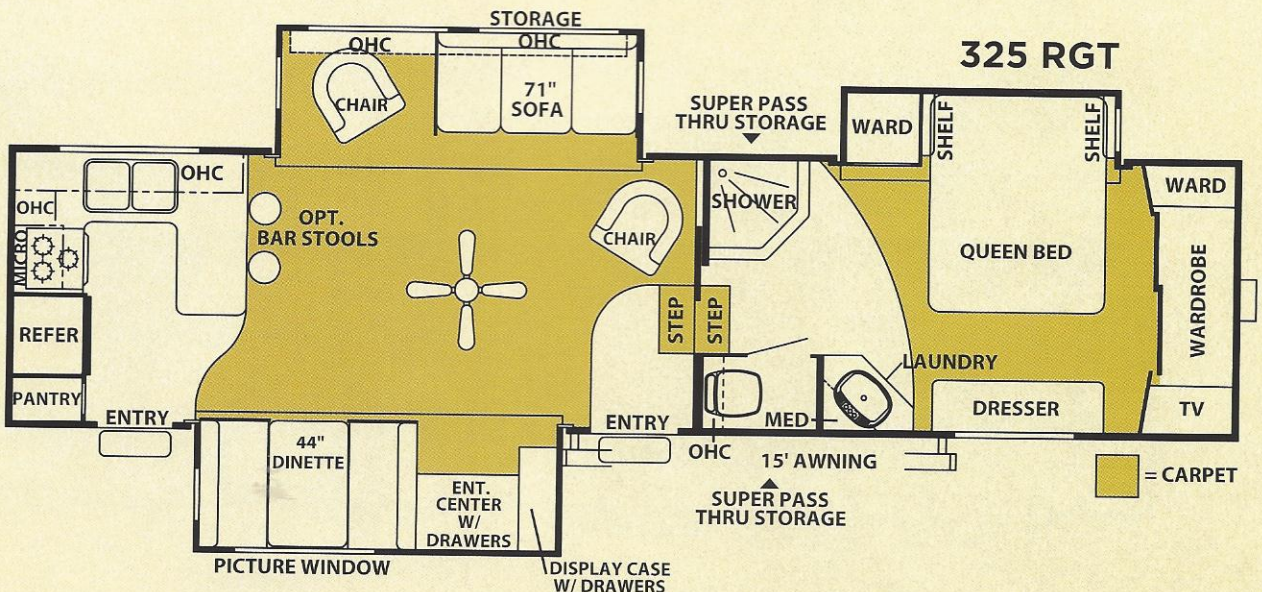
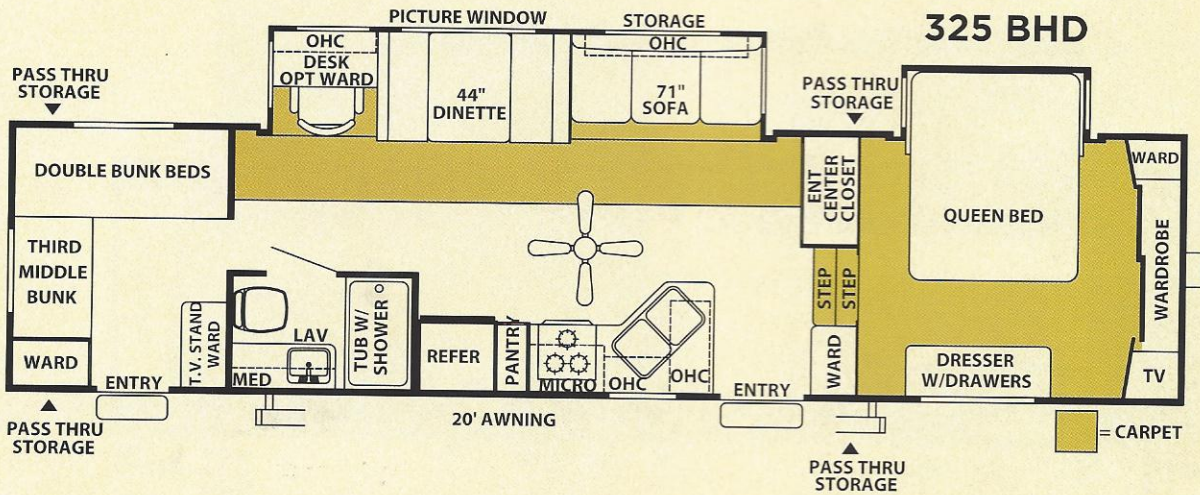
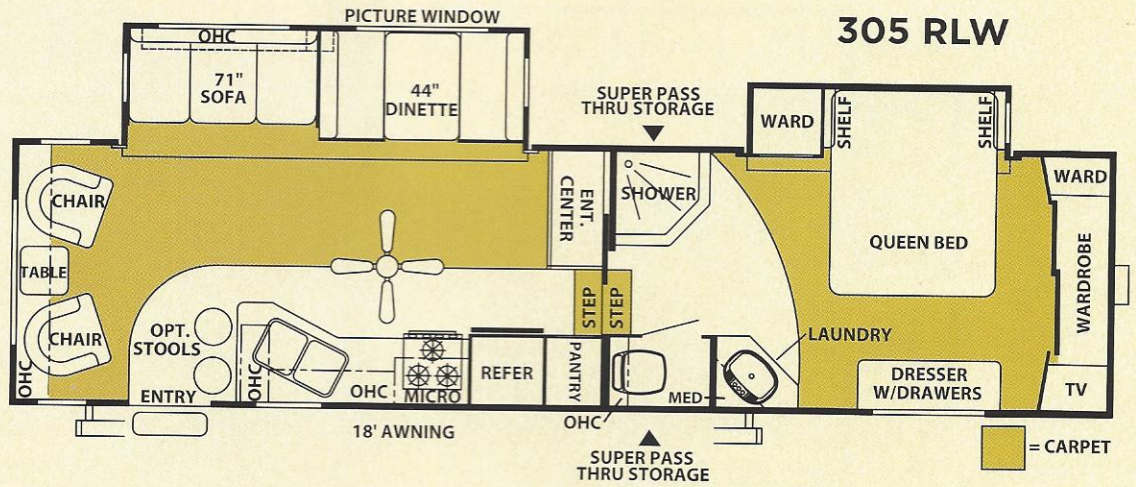
**BLOCK FOAM INSULATION**

**LAMINATED UPPER DECK**

# Fifth Wheel Floorplans: Mid-Profile

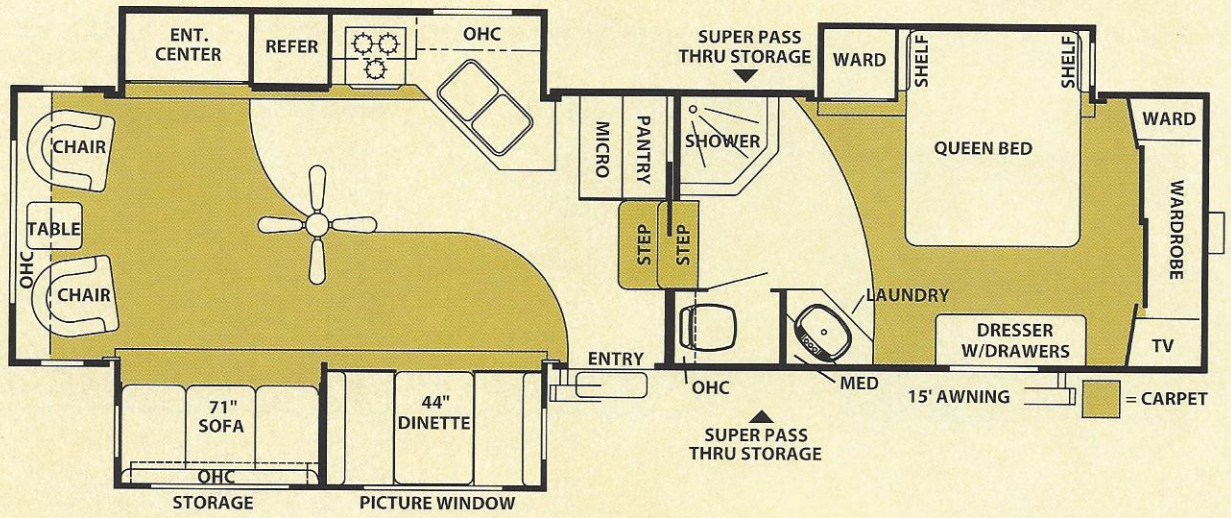


# Fifth Wheel Floorplans: High-Profile

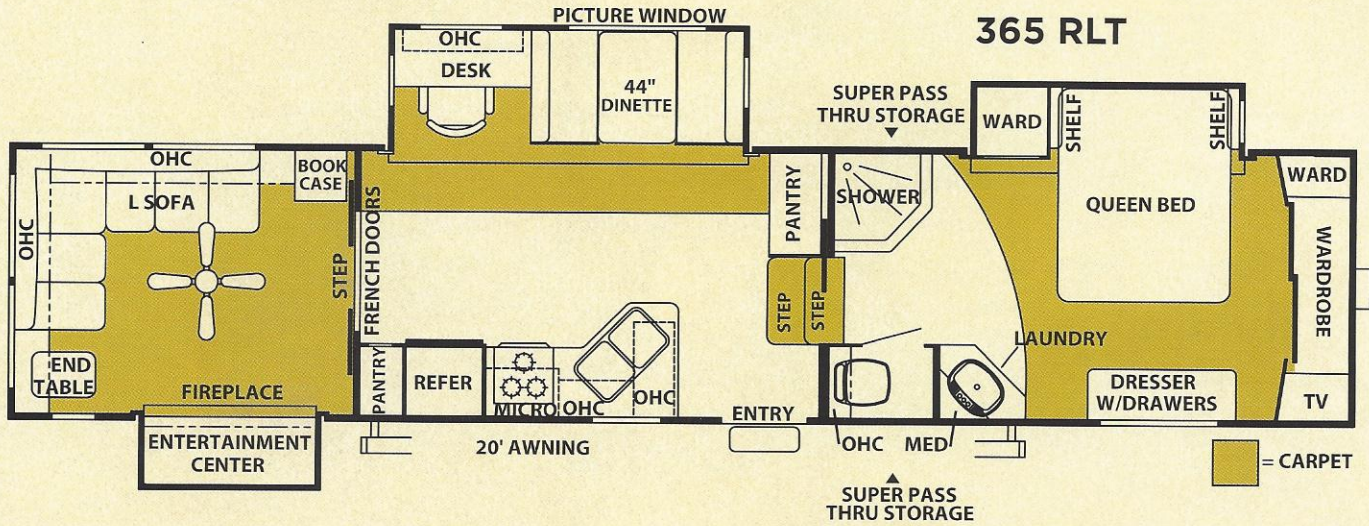


# Fifth Wheel Floorplans: High-Profile

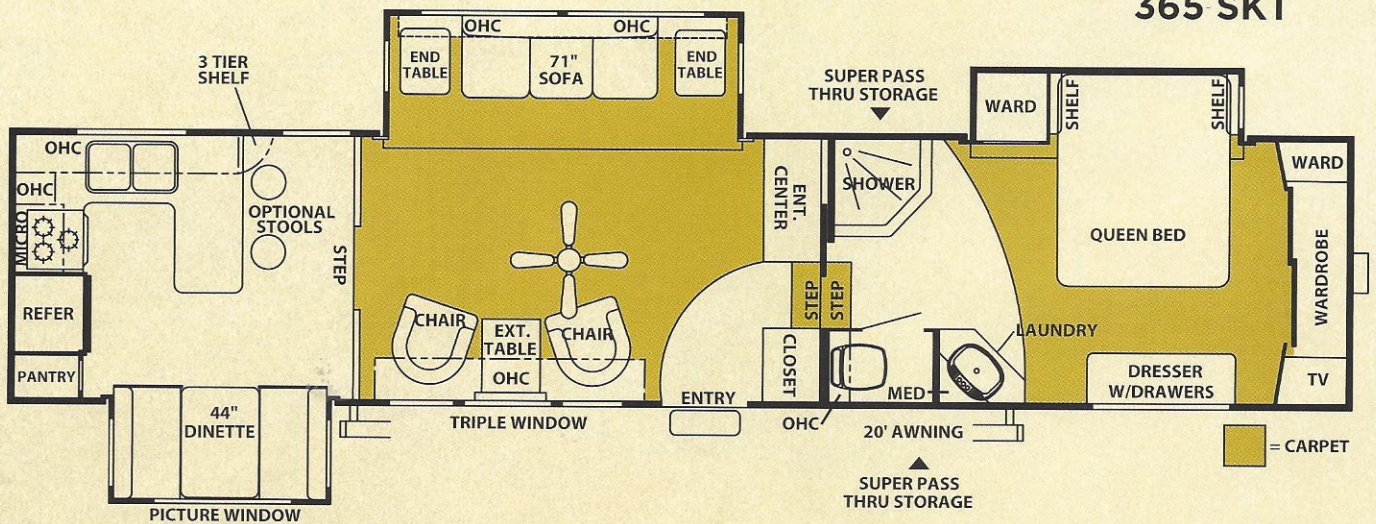
335 RLТ

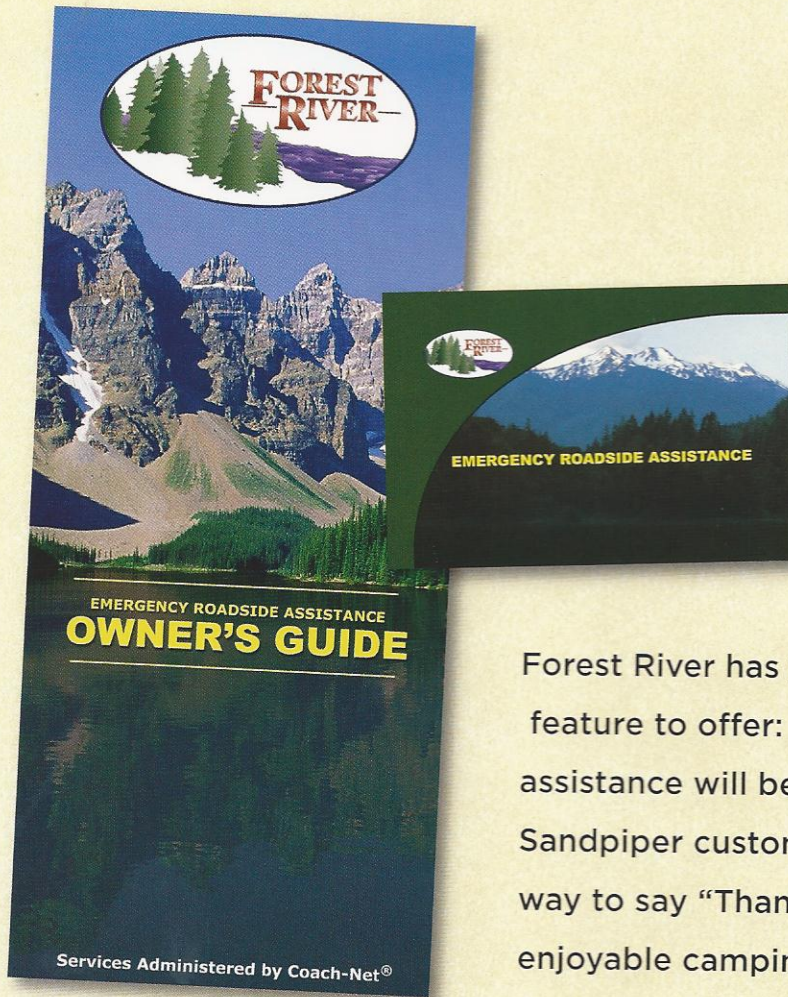


365 RLТ



365 SKТ





Forest River has yet another exclusive feature to offer: One year of free roadside assistance will be given to every 2005 Sandpiper customer. This is just one more way to say "Thank you" and to ensure an enjoyable camping experience.

## Fifth Wheel Specifications

### MID-PROFILE

Model Number	285BH	285RG	285RL
Hitch weight	1,520	1,460	1,920
Axle weight	6,900	6,390	6,370
Ship weight	8,420	7,850	8,290
GVWR	11,680	11,620	12,080
Exterior Length	32' 11"	29' 9"	32'
Exterior Height	13'	13'	13'
Awning	18'	21'	16'
Gray Water Cap.	80 Gal.	80 Gal.	50 Gal.
Black Water Cap.	50 Gal.	50 Gal.	50 Gal.
Fresh Water Cap.	48 Gal.	48 Gal.	48 Gal.

### HIGH PROFILE

Model Number	305RLW	325BHD	325RGT	335RLT	365RLT	365SKT
Hitch weight	2,230	2,010	2,080	2,320	2,150	1,970
Axle weight	6,990	8,000	8,360	8,550	9,160	9,280
Ship weight	9,220	10,010	10,440	10,870	11,310	11,250
GVWR	14,230	12,410	12,480	14,320	14,150	13,970
Exterior Length	34'	35' 10"	35' 11"	37'	39' 5"	40' 7"
Exterior Height	13'5"	13'5"	13'5"	13'5"	13'6"	13'6"
Awning	18'	20'	15'	15'	20'	20'
Gray Water Cap.	50 Gal.	30 Gal.	80 Gal.	80 Gal.	80 Gal.	80 Gal.
Black Water Cap.	50 Gal.	30 Gal.	50 Gal.	50 Gal.	50 Gal.	50 Gal.
Fresh Water Cap.	61 Gal.	48 Gal.	61 Gal.	61 Gal.	61 Gal.	61 Gal.

\* Ship weights do not include options. ~ Not available at time of printing. Model number does not necessarily reflect the overall length of a particular unit.

# My RV Checklist

Item	Sandpiper	Brand X	Brand Y
<b>Exterior Highlights</b>			
ALUMINUM - Vacuum Bonded Super Structure	yes	_____	_____
Ultra Lube Axles (Easiest Maintenance Available)	yes	_____	_____
16" Radial Tires w/ 6000# Axles (High Pro F.W.)	yes	_____	_____
15" Radial Tires w/ 5200# Axles (Mids & Trailers)	yes	_____	_____
10" I-Beam Frame with Mig Welded Outriggers	yes	_____	_____
Fully Enclosed Underbelly (with Radiant Heat)	yes	_____	_____
Lighted Entry Steps (9" Hickory Spring Steps)	yes	_____	_____
Folding Grab Handle at Entry Door	yes	_____	_____
Unobstructed, Felted, Pass-through Storage	yes	_____	_____
Aero-Dynamic, Fiberglass Front Cap	yes	_____	_____
Motorized "Class A Style" Radius Roof	yes	_____	_____
Full Walk-on Roof Decking (Front to Back)	yes	_____	_____
Tinted Windows	yes	_____	_____
Recreation Light Under Awning for Optimal Lighting	yes	_____	_____
2 - Marine Grade Exterior Speakers (optional)	yes	_____	_____
<b>Interior Highlights</b>			
100% Water Purifying System (Full System)	yes	_____	_____
100-Watt, Eight (8) Speaker Home Theater System	yes	_____	_____
Lumber-core, Glued & Screwed Cabinetry	yes	_____	_____
Raised Panel (Upper & Lower) Cabinet Doors	yes	_____	_____
Metal Drawer Glides (Throughout)	yes	_____	_____
5/8", Tongue & Groove PLYWOOD Flooring	yes	_____	_____
LAMINATED Bath Deck (Superior strength & Insulation)	yes	_____	_____
Foot Flush Toilet (For Sanitary Bathroom Use)	yes	_____	_____
100" Bedroom Slide-out with Wardrobe (per floorplan)	yes	_____	_____
Bed-slide Roller Wheels (F.W. per floorplan)	yes	_____	_____
Pillow Shams, Mirrored Headboard & Shelf	yes	_____	_____
6'4" Main Slide-out height (F.W.)	yes	_____	_____
Skylight over Tub	yes	_____	_____
Single Lever Faucet	yes	_____	_____



Forest River, Inc. 55470 CR 1 Elkhart, IN 46515-3030  
 Phone: 574.533.5934 Fax: 574.533.3224  
[www.forestriverinc.com](http://www.forestriverinc.com) [www.forestriveraccessories.com](http://www.forestriveraccessories.com)

All illustrations and specifications contained in this literature are based on the latest product information at time of publication. Forest River reserves the right to make changes in prices, colors, materials, equipment and specifications at anytime without notice and assumes no responsibility for any error in this literature. All units are shipped F.O.B. Goshen, Indiana.

CONSULT YOUR LOCAL DEALER FOR WARRANTY INFORMATION.

COMPLIMENTS OF

**Jerry's Trailers & Campers**  
 2601 South 13th St.  
 Norfolk, NE 68701  
 (402) 371-1306