

# Sandpiper

BY FOREST RIVER

*Take the road less traveled...*



LUXURY TRAVEL TRAILERS  
& FIFTH WHEELS

## *Sandpiper Travel Trailers: AFFORDABLE LUXURY*

Many "affordable" travel trailers are unappealing because they appear so confining and dark inside. The opposite is true with the Sandpiper. Careful attention is paid to color coordinating all of the components from the extra large overhead cabinets with solid oak countertop edging, abundance of drawers, stainless steel residential cabinet hardware, toe kick in galley, extra large 22" range and oven, single lever chrome metal kitchen faucet, to the plush 30 oz. carpeting and vinyl flooring.

33 FKSS SAGE DECOR



Model 27RLSS Trailer  
exterior shown with  
standard vacuum bonded  
fiberglass exterior and  
optional front cap.





27 RLSS TAN DECOR

The rich cabinetry with solid oak drawer fronts are accented by oak edged, fully laminated countertops. Contemporary appliances are built in and are eye catching to the most design-oriented homemaker. Whether it's hors d'oeuvres for guests or a full course meal, Sandpiper galleys offer the space and tools you need to satisfy the heartiest of appetites.

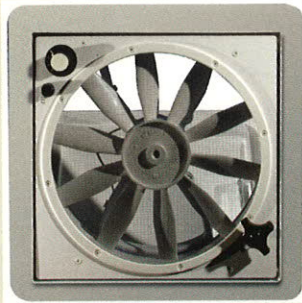


**ALUMA-STRUCTURE**  
VACUUM BONDED

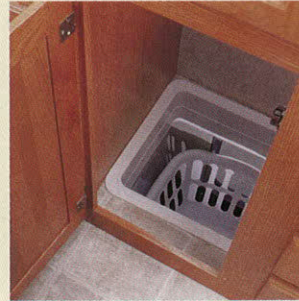
Featuring Aluma-Structure vacuum bonded sidewalls with block foam insulation and the latest state-of-the-art computer-driven lamination facility in the recreational vehicle industry!

# Sandpiper

ADVANTAGES



Our 12" 10-blade Fantastic™ Bath Fan significantly increases air circulation and the removal of condensation as compared to the industry's standard smaller power bath vent.



On selected fifth wheel models we have provided a laundry chute with basket.



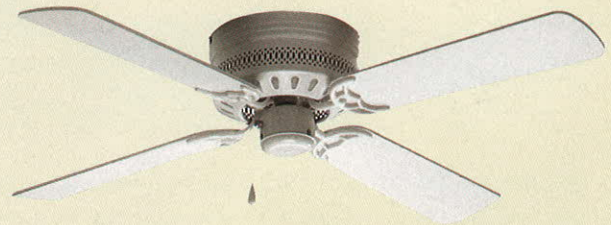
Vented side windows in the slideout let you enjoy the cool breezes providing important cross ventilation that most of our competitors do not offer.



Safety, comfort and convenience is what we are all about - every Sandpiper™ is equipped with a lighted main entry step. You will come to appreciate this feature while enjoying those late night campfires.



Why leave all the fun at home? Bring it with you! With Sandpiper's huge exterior storage compartment your packing is not limited to just the interior.



For maximum air circulation and to increase your heating and cooling efficiencies, you may want to choose this optional ceiling paddle fan. (Available on all fifth wheels and 38' travel trailers.)



Enjoy movies, sports and music with Forest River's exclusive sound system. The heart of our impressive system is an AM/FM CD cassette stereo all operated by remote control. Our speaker system boasts an impressive 100 watt sub woofer with four satellite cube speakers to enhance your listening pleasure.



Our whole house water filtration system removes the bad taste and odor as well as bacteria and other contaminants for 10,000 gallons or one year. The WaterPur™ Filtration System has been awarded the WQA Gold Seal for meeting and exceeding the industry standards for performance, capacity and integrity. This will ensure that you will have a safe and healthy camping experience. For more information go to [www.wqa.org](http://www.wqa.org).

Consider this your passport to the good life: Sandpiper style, spaciousness and quality in a fifth wheel that is a real value. Make note of the abundance of cabinetry in both the kitchen and the slideout. (Shown with some optional features.)

33RLTS DESIGNER SAGE DECOR



The slideout in the Sandpiper fifth wheel offers the camping family plenty of added space to an already roomy interior. Smartly decorated with matching window coverings, you'll find it hard to believe you ever left home.

25 RLSS DESIGNER MAUVE DECOR



# Sandpiper Fifth Wheels: WARM, ROOMY & SPACIOUS

Every room in a Sandpiper is meticulously and practically designed to make careful use of all of its space. A rich combination of woods and attractive fabrics, highlighted by professional details and domestic window treatments, give the Sandpiper a reputation of elegance and outstanding quality.



30 RLSS TAN DECOR

30RLSS shown with optional front and rear fiberglass caps, tinted windows, aluminum rims, and spare tire.





27 RKSS BLUE DECOR

Above – The warmth of deep, rich, handcrafted cabinetry fills this popular fifth wheel model. The roomy slideout, in conjunction with a spacious floorplan, produces a home-like great room effect.

The Sandpiper now has an optional slideout awning that protects the slideroom roof from debris and other elements (optional feature).



*A partnership of recreation and nature*



# Sandpiper FEATURES & OPTIONS

## COMFORT

- Five color coordinated interiors
- Color coordinated bedspreads & bunkspreads
- 44" dinette seats
- Bedroom roof vent
- In floor ducted heat
- Carpet w/padding
- 30" radius primary entrance door, 26" secondary
- Mattress upgrade
- Jalousie windows
- Fantastic vent bath
- Color coordinated drapes & valances
- 84" interior height (38BHDS, 38FKDS and all 5th wheels)
- 80" interior height (trailers only)
- Free standing swivel rocker (per floorplan)
- Dometic 13,500 BTU central air conditioner w/quick cool feature
- Sofa bolsters (n/a w/hide-a-bed)
- Vented side windows in slideouts
- Toe kicks kitchen base cabinets
- Color coordinated headboard (5th wheels)
- Wallpaper border (Kitchen and Living Room)

## CONVENIENCE

- 6 gal. gas/electric DSI water heater
- Built-in medicine cabinet & mirror in bath
- Mini-blinds throughout (n/a bunkbeds)
- Systems monitor panel
- 12-volt decor light in slide room
- Large Dometic® double door refrigerator
- TV antenna w/booster
- Surround sound TV hook-up
- Bi-fold shower door
- Lift-up beds w/gas struts (per floorplan)
- 60/40 split acrylic sink
- Single lever faucet
- Two plastic sink covers
- 30 lb. double LP tanks w/auto changeover
- LP tank cover (on trailers)
- Rear bumper w/sewer hose carrier
- Chrome bumper cover
- Hitch light
- Porch light w/interior switch
- Step light - main entrance
- TV shelf and outlet in bedroom
- Oak spice and knife rack
- Positive cabinet door catches
- Oak-edged laminated countertops
- Towel ring and finished toilet paper holders

- Interior access door under dinette
- Pots and pans drawer under dinette
- Solid oak drawer fronts w/pine sides
- Magic Chef three burner high output range w/ 22" oven
- Mortise & tenon solid oak raised panel cabinet doors
- Solid oak slideout fascia
- Neo angle shower w/glass door (where available)
- Power range hood w/light
- Extra large picture window in slide-room dinette
- Triple step w/9" riser (slides only)
- Microwave w/carousel
- Satellite prep
- Cable hook-up
- Laundry chute (most 5th wheel floorplans)
- Overhead cabinet in slideout

## CONSTRUCTION

- Aluminum-framed, vacuum-bond laminated sidewalls
- A & E 8500 series side awning
- 5/8" plywood tongue & groove floor decking
- 5" truss roof rafters
- 3/8" roof decking (entire roof)
- 2" x 3" floor joists 12" on center
- R-7 insulation in floors and ceilings
- R-9 sidewall insulation
- Radial tires
- Flush clamp ring windows w/radius corners
- Plywood constructed dinette & bed bases (2" x 2")
- Automotive-style fender skirts
- Enclosed gooseneck (5th wheels only)
- Finished interior bed bases
- Rolled side metal on all slideout models
- Powder coated frame
- Power flush floor slideout w/manual override

## SECURITY & SAFETY

- Flush door latch w/integral deadbolt lock
- Smoke detector
- Fire extinguisher
- LP leak detector
- Screen door w/safety latch
- Electric brakes
- GFI receptacle - kitchen, bath, and outside receptacles
- Safety chains (trailers)

## MAINTENANCE

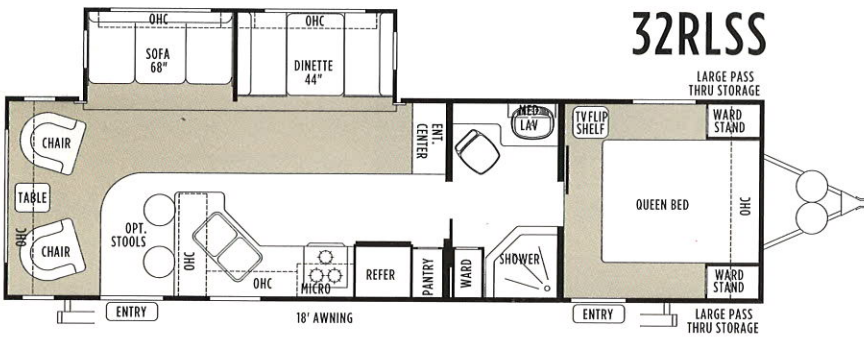
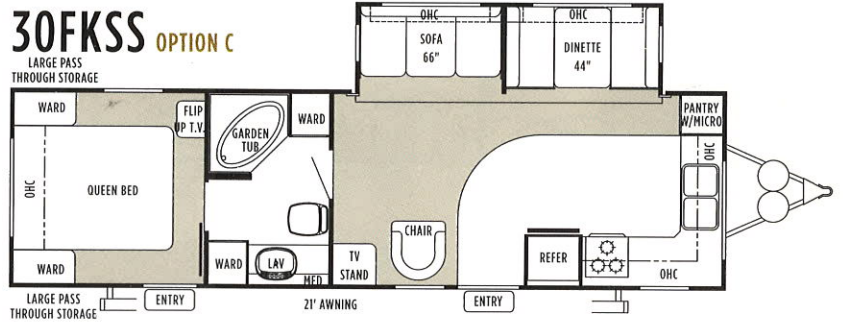
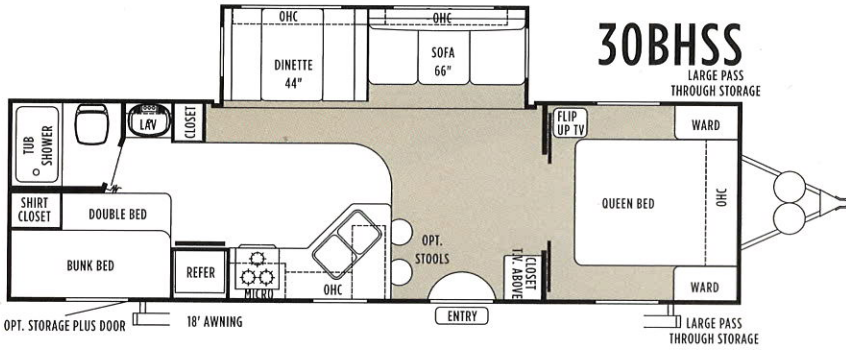
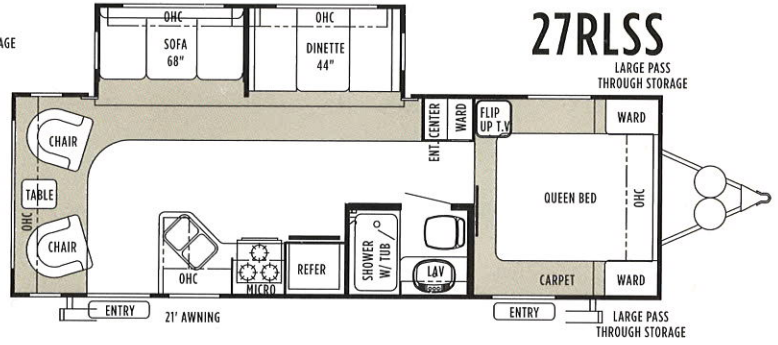
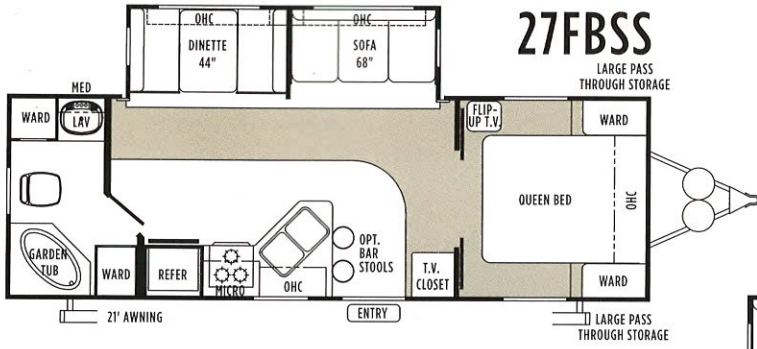
- ABS tub w/one piece surround (per floorplan)
- Awning drip rail w/downspout
- Fiberglass entry and baggage doors
- Water heater by-pass
- Seamless rubber roofing with 12-year warranty
- Full walk-on roof

## SANDPIPER ADVANTAGE

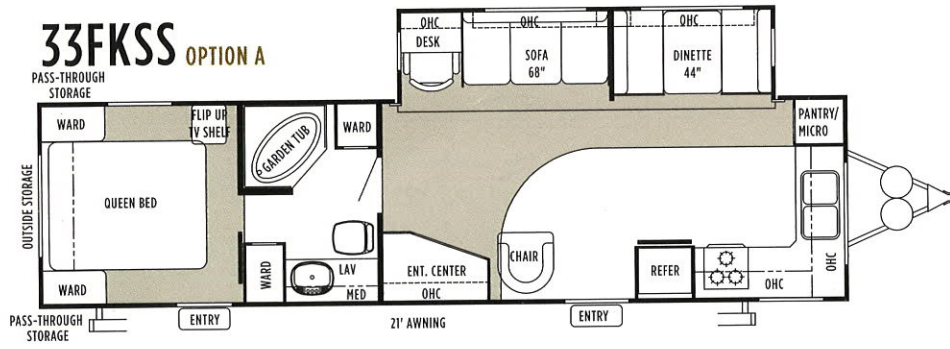
- CD/Cassette Stereo System with Remote Control
- Water Filter System (Entire Unit)
- Fantastic Fan in Bath
- 6+2 Forest River Sound System w/100 watt Subwoofer for True Surround Sound
- Lighted Entry Step (Main Entrance)

## POPULAR OPTIONS

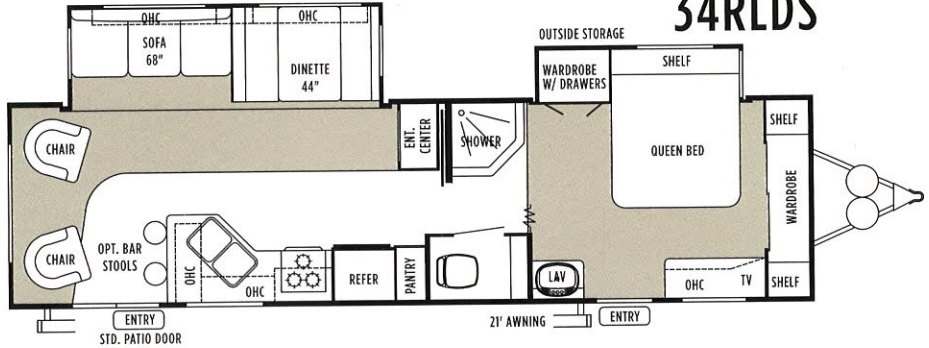
- Skylight over tub
- Sofa hide-a-bed (slideouts only)
- Stabilizer jacks
- Spare tire, carrier and cover
- Patio door w/vertical blinds (per floorplans)
- Power front jacks
- Outside shower
- Interior light package upgrade
- Range cover
- Extra large double door refrigerator
- Raised refrigerator door oak insert
- Large exterior storage sofa
- Small exterior storage dinette
- Glass garden tub/shower door (per floorplan)
- Bar stools
- Second drawer under dinette
- Phone jack
- Roof rack & ladder
- Twin beds (per floorplan)
- Living Room Ceiling paddle fan (38BHDS, 38FKDS)
- Free-standing dinette with 4 chairs
- Glider recliner IPO swivel rocker
- 15K Air conditioner IPO 13.5K
- Water heater 10 gal. gas/electric DSI
- Day/Night shades
- Front and rear caps (5th wheels only)
- Fiberglass front cap (Travel Trailer)
- Tinted black frame safety glass windows
- Slideout awning(s)
- Storage Plus door
- Platinum Package (5th wheels)
- Platinum Package (select travel trailers)
- XM Satellite Radio System
- 8+2 Forest River Sound System w/100 watt Subwoofer for True Surround Sound
- Aluminum Rims



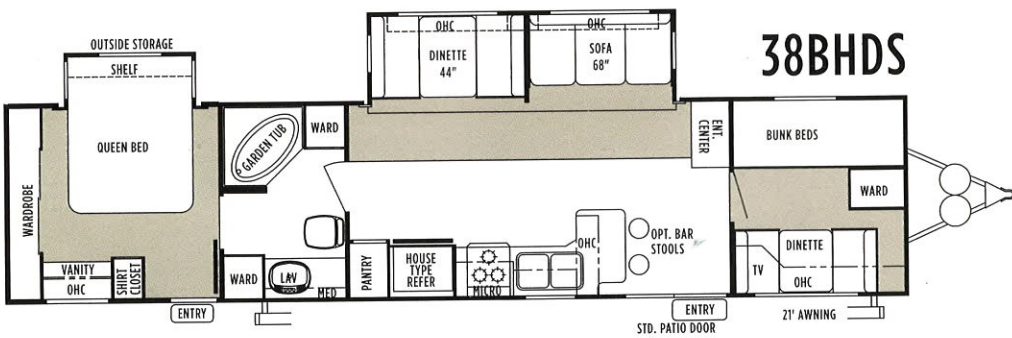
# 33FKSS OPTION A



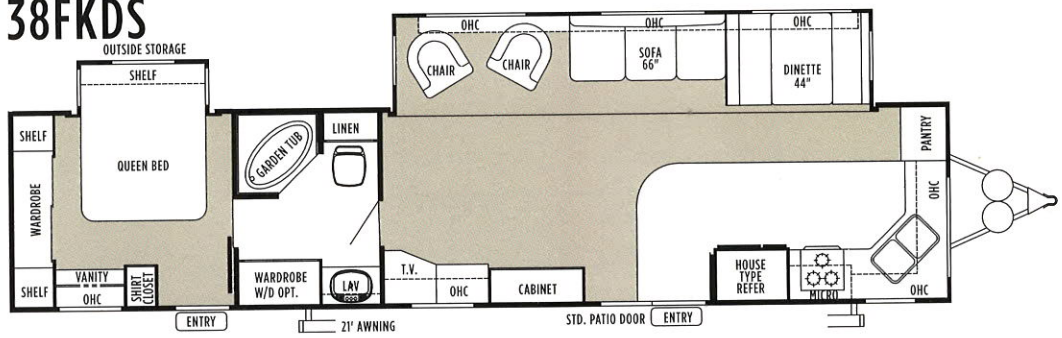
# 34RLDS

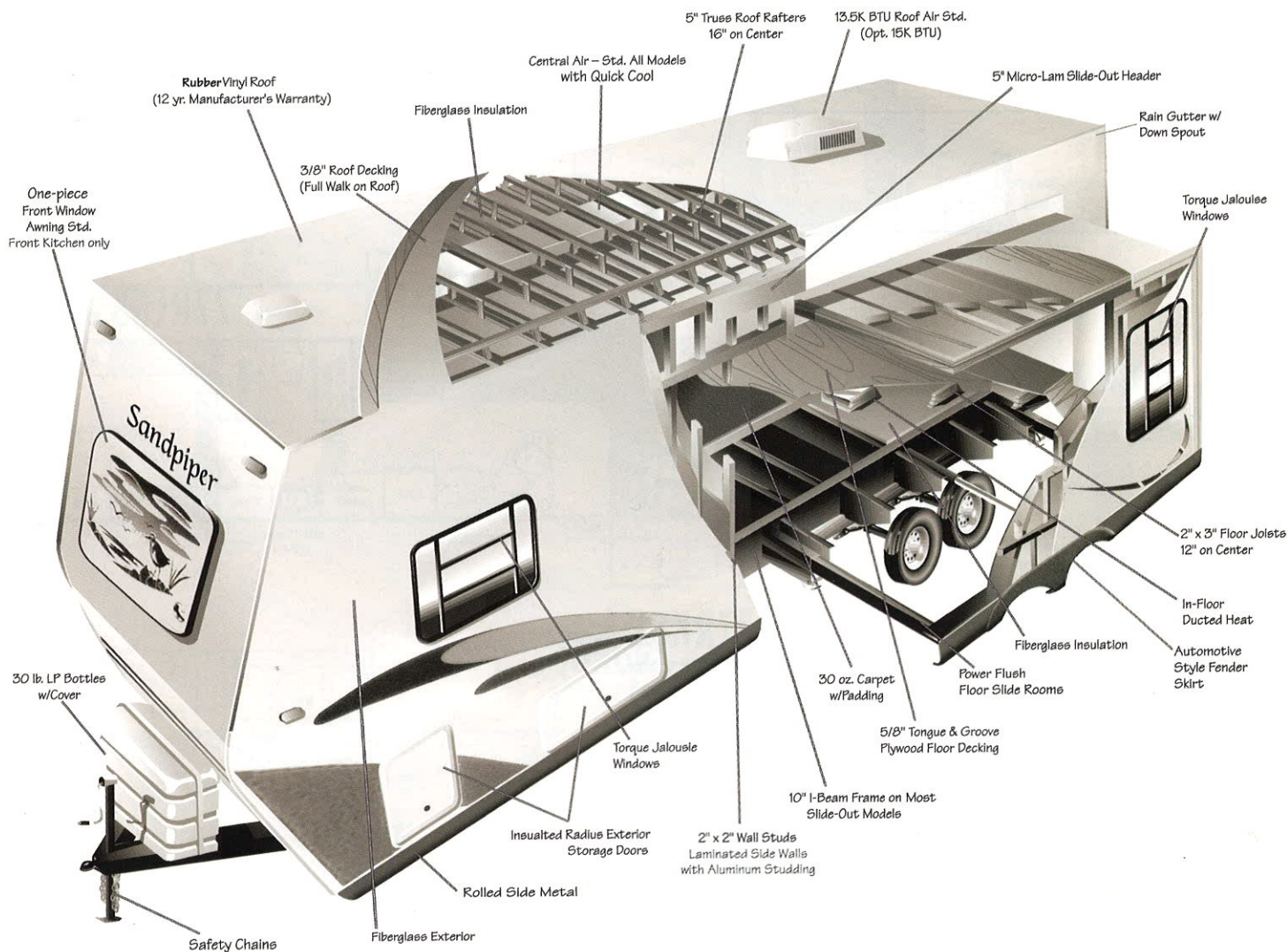


# 38BHDS



# 38FKDS

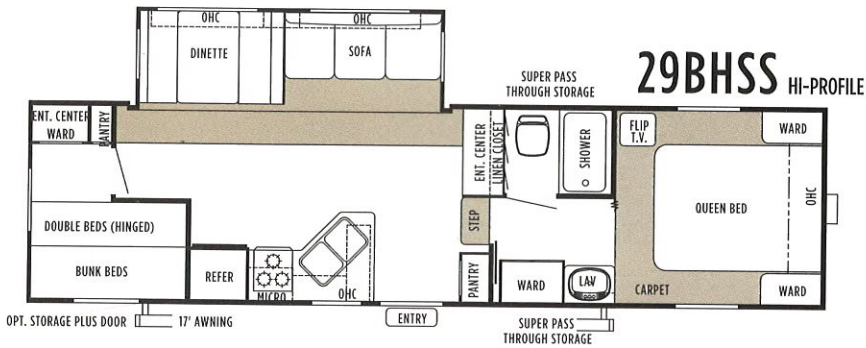
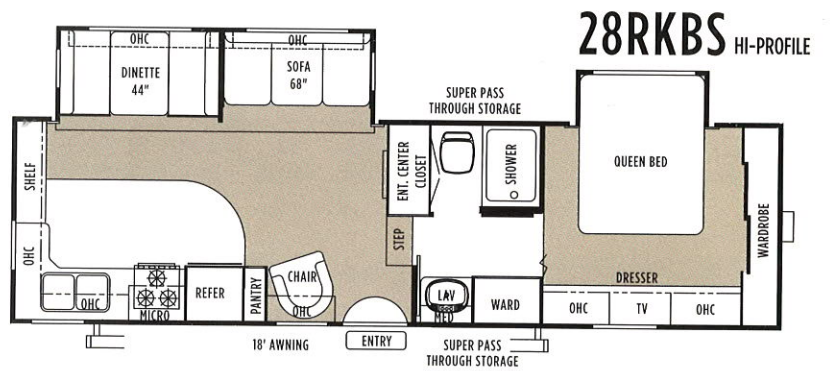
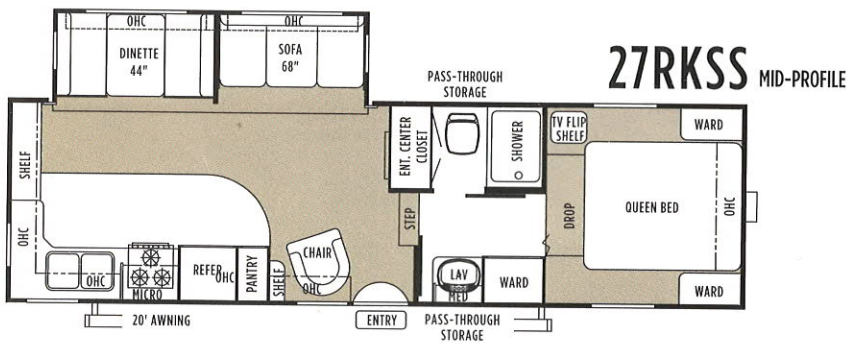
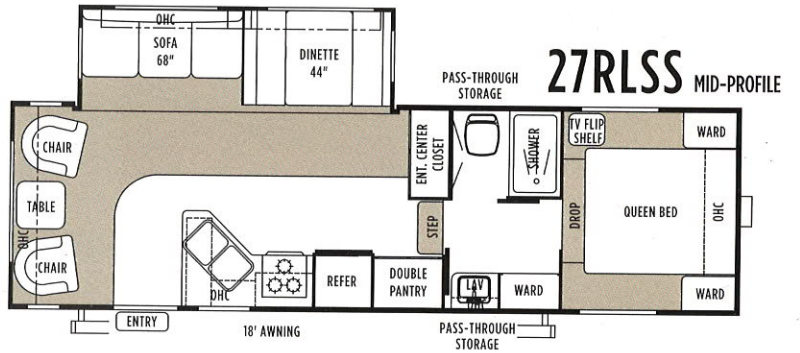
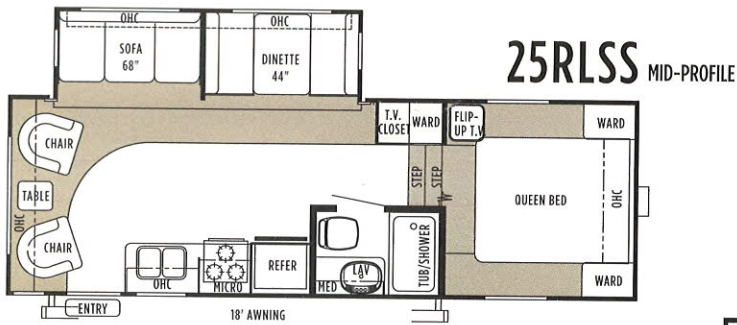


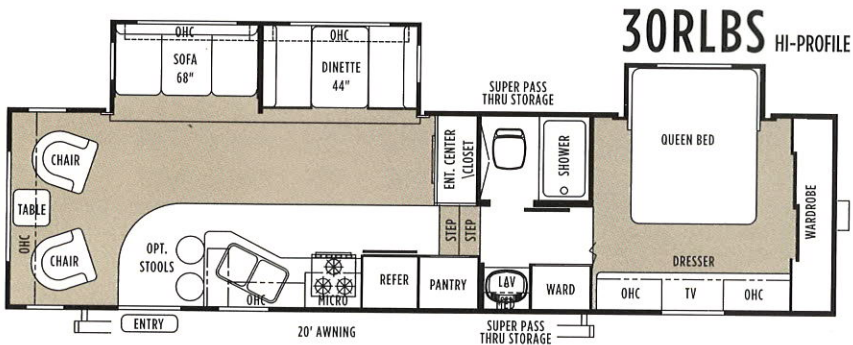
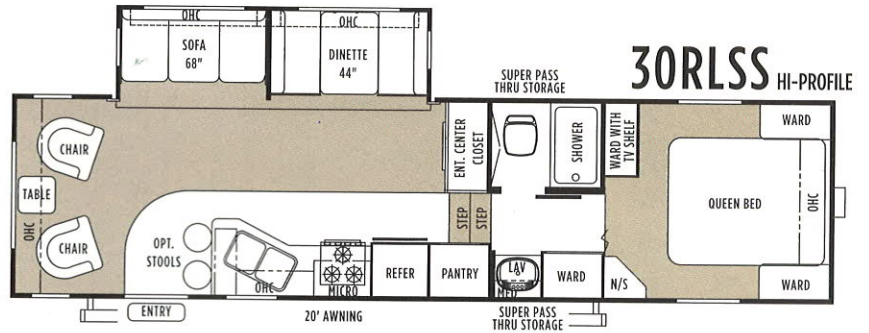
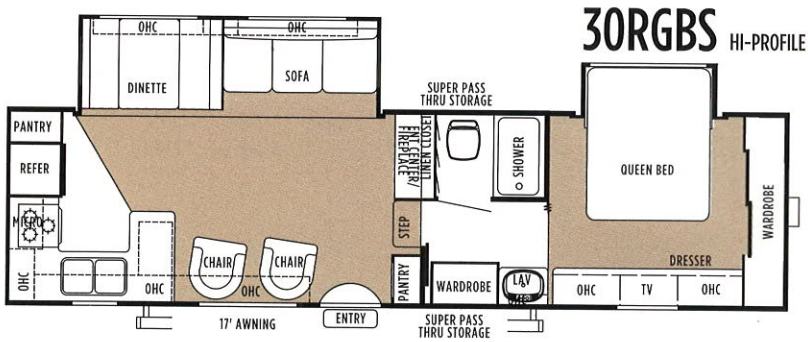
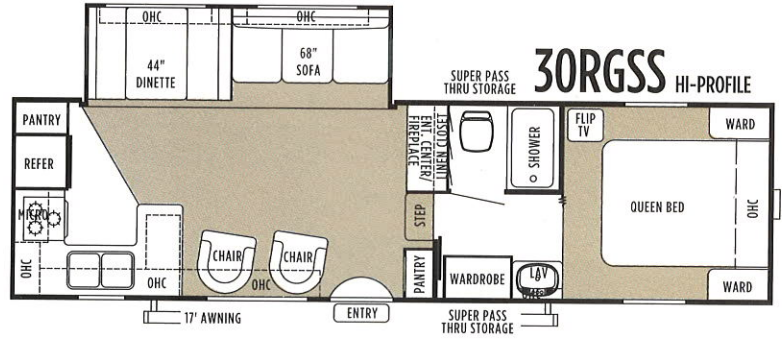
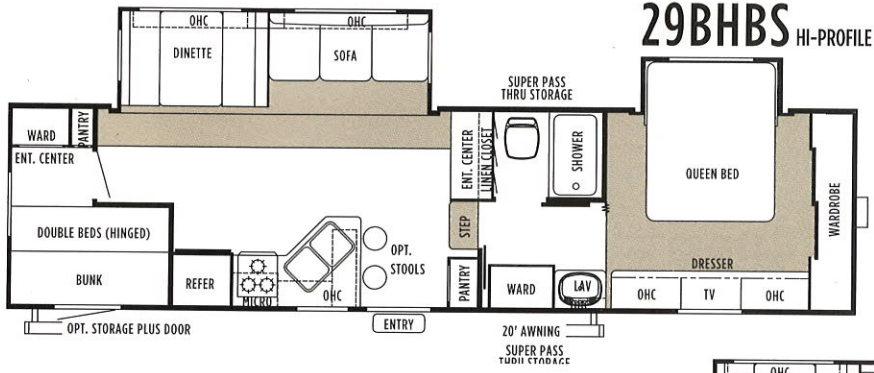


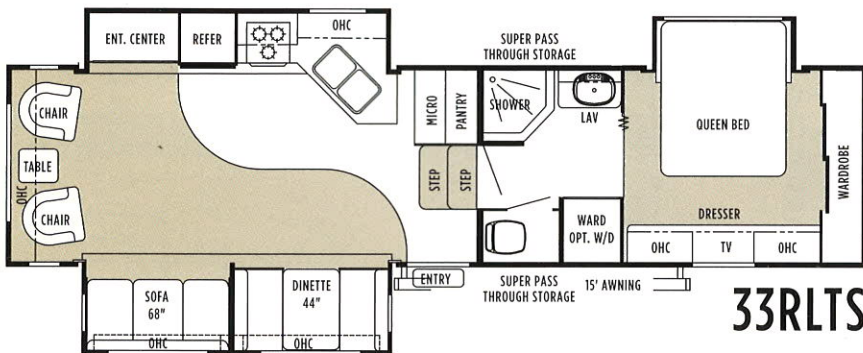
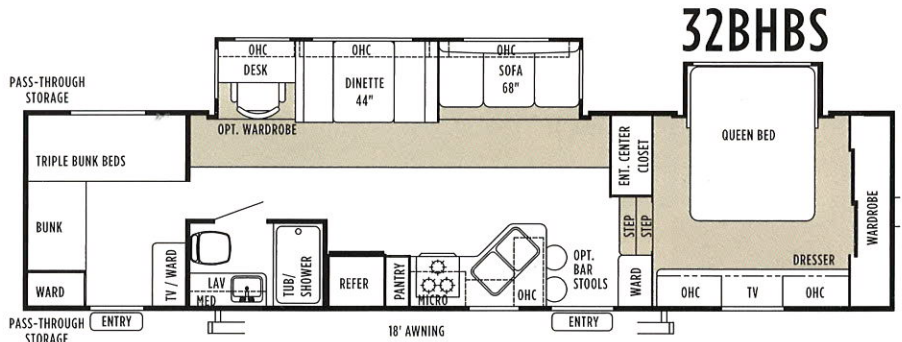
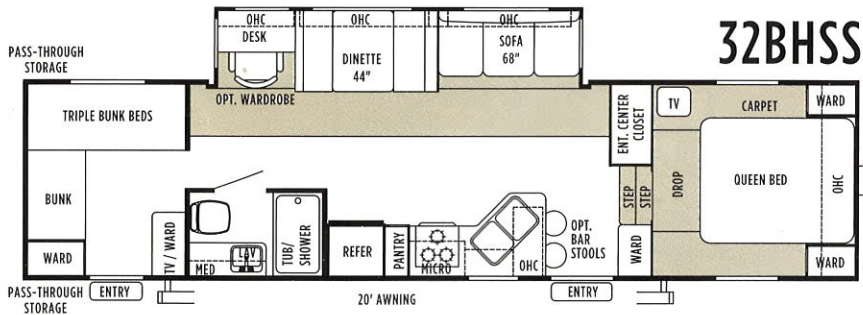
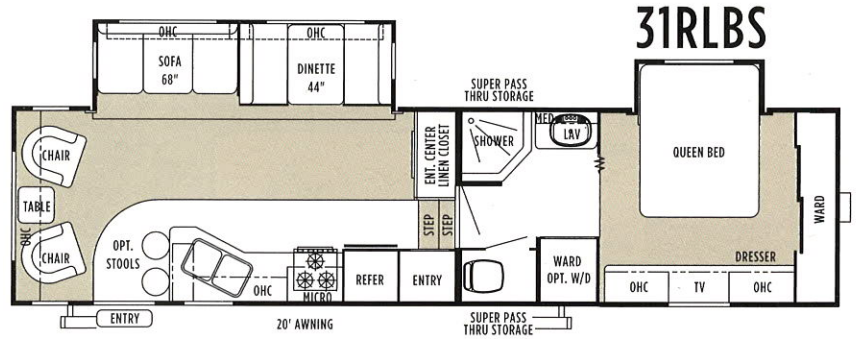
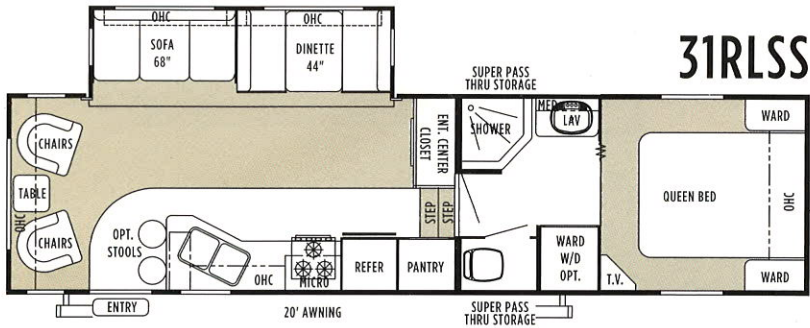
Model Number	Ship* Weight (Lbs.)	GVWR (Lbs.)	Cargo Capacity	Hitch Weight	Axle Weight	Exterior Height	Exterior Length	Sleeping Capacity	Fresh Water	Waste Water Capacity	Grey Water (Gal.)	Water Heater (Gal.)	LP Capacity (Gal.)	Furnace BTU (Lbs.)	Bedroom Height (x1000)	Awning Length
27FBSS	6720	10,770	3590	610	6110	10' 9"	28' 6"	6	40	55	30	6	60	30	80"	21'
27RLSS	6723	10,867	4144	707	6016	10' 9"	29' 1"	6	40	30	30	6	60	30	80"	21'
30BHSS	~	~	~	~	~	10' 9"	30' 10"	9	40	30	50	6	30	30	80"	18'
→ 30FKSS	6965	11,150	4185	990	5975	10' 9"	31' 11"	6	50	50	60	6	60	30	80"	21'
32RLSS	~	~	~	~	~	~	~	6	~	~	~	6	~	30	80"	18'
33FKSS	7115	11,280	4165	1120	5995	10' 9"	33' 5"	6	50	50	60	6	60	30	80"	18'
34RLDS	8810	11,200	1930	1040	7770	10' 9"	33' 9"	6	50	50	60	6	60	30	80"	21'
38FKDS	9610	11,760	1690	1600	8010	11' 1"	41' 10"	6	50	50	30	6	60	30	84"	21'
38BHDS	9305	11,190	1885	1030	8275	11' 1"	38' 10"	8	50	50	30	6	60	30	84"	21'

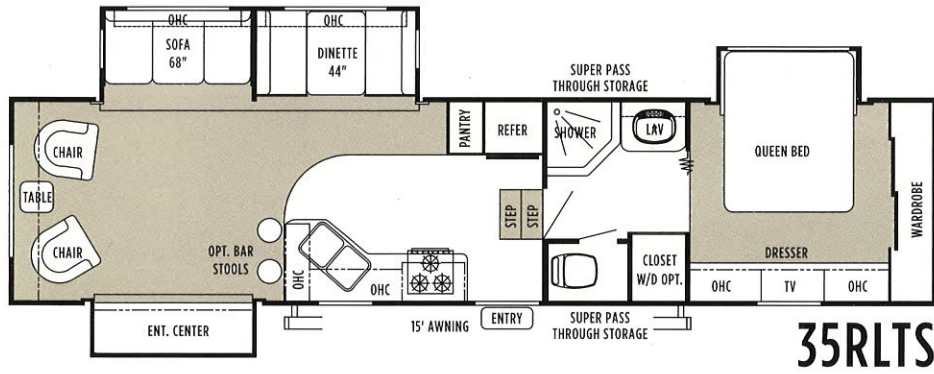
\* Ship weights do not include options. ~ Not available at time of printing.  
 Model number does not necessarily reflect the overall length of a particular unit.

## FLOORPLANS & SPECS Sandpiper Travel Trailer

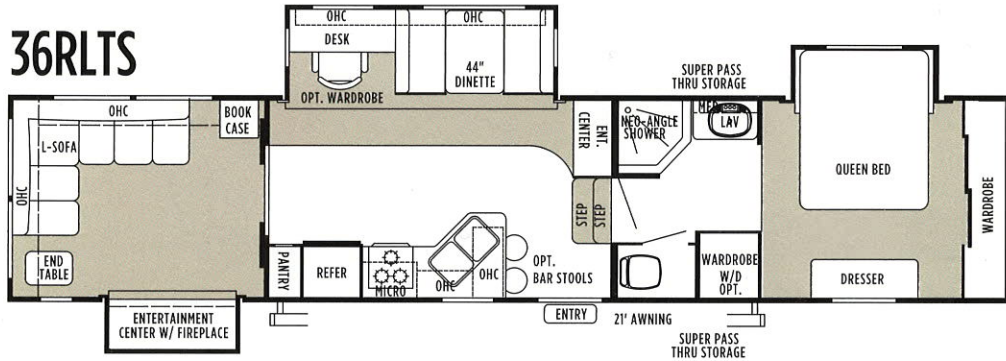








**35RLTS**



**36RLTS**

Model No.	Ship* Weight (Lbs.)	GVWR (Lbs.)	Cargo Capacity	Hitch Weight	Axle Weight	Exterior Height	Exterior Length	Sleeping Capacity	Fresh Water Cap. (Gal.)	Waste Water Cap. (Gal.)	Grey Water Cap. (Gal.)	Water Heater Cap. (Gal.)	LP Capacity (Lbs.)	Furnace BTU (x1000)	Bedroom Height (FW)	Awning Length
25RLSS	7040	8380	1340	1380	5660	11' 7"	26' 1"	6	40	30	30	6	60	30	71"	18'
27RKSS	7575	11,586	4011	1426	6149	11' 7"	29' 8"	6	50	30	60	6	60	30	71"	20'
27RLSS	N/A	N/A	N/A	N/A	N/A	11' 7"	31' 3"	6	60	50	50	6	60	30	71"	18'
28RKBS	8500	12,110	3610	1950	6550	12' 2"	31' 4"	6	50	30	60	6	60	30	69"	18'
29BHBS	9550	12,460	2450	2300	7250	12' 2"	33' 10"	8	40	30	50	6	60	30	69"	17'
29BHSS	~	~	~	~	~	12' 2"	31' 9"	8	~	30	50	6	60	30	69"	20'
29RGSS	~	~	~	~	~	12' 2"	~	6	~	~	~	6	60	30	69"	17'
30RGSS	~	~	~	~	~	12' 2"	~	6	~	~	~	6	60	30	69"	17'
30RLBS	~	~	~	~	~	12' 2"	~	6	60	50	50	6	60	30	69"	20'
30RLSS	8276	12,125	3849	1965	6311	12' 2"	32' 8"	6	60	50	50	6	60	30	69"	20'
31RLSS	9630	12,270	2180	2110	7520	12' 2"	33' 6"	6	40	30	50	6	60	30	69"	20'
31RLBS	9970	12,240	1810	2080	7890	12' 2"	34' 5"	6	40	30	50	6	60	30	69"	20'
32BHSS	8768	11,900	3132	1740	7028	12' 2"	33' 2"	8	50	30	30	6	60	30	69"	20'
32BHBS	9890	12,410	2060	2250	7640	12' 2"	35' 10"	8	50	30	30	6	60	30	69"	18'
33RLTS	10,870	14,320	2990	2320	8550	12' 2"	37'	6	50	65	50	6	60	30	69"	15'
35RLTS	10,098	13,859	3761	1859	8239	12' 2"	35' 6"	6	50	50	80	6	60	30	69"	15'
36RLTS	~	~	~	~	~	~	~	~	~	~	~	~	~	~	~	21'

\*Ship weights do not include options. ~ Not available at time of printing.  
 Model number does not necessarily reflect the overall length of a particular unit.



## Sandpiper Platinum Series EXPERIENCE THE BEST!

Sandpiper Platinum Series not only offers striking exterior beauty but also uses top of the line components and features that the experienced camper demands. When choosing the best, choose the Sandpiper Platinum Series.

### The Platinum series includes these standard upgrades:



- Full Gel-Coat Fiberglass Sidewalls
- Front Fiberglass Cap
- Rear Fiberglass Cap (Fifth Wheels Only)
- Aluminum Wheels
- 3/4" Insulated, Gel-Coat Fiberglass Baggage Doors
- Upgraded Fiberglass Entry Door(s)
- High-Intensity Safety Lights Mounted on Sides
- Platinum Painted Awning Hardware

All illustrations and specifications contained in this literature are based on the latest product information at time of publication. Forest River reserves the right to make changes in prices, colors, materials, equipment and specifications at anytime without notice and assumes no responsibility for any error in this literature. All units are shipped F.O.B. Goshen, Indiana.

CONSULT YOUR LOCAL DEALER FOR WARRANTY INFORMATION.



Forest River, Inc.  
 55470 CR 1 Elkhart, IN 46515-3030  
 Phone: 574.533.5934 Fax: 574.533.2965  
[www.forestriverinc.com](http://www.forestriverinc.com) [www.forestriveraccessories.com](http://www.forestriveraccessories.com)

COMPLIMENTS OF



**ADVENTURE RV**

5500 Merriam Drive  
 Merriam, KS 66203  
 (913) 236-8335

[www.adventureRVkcmetro.com](http://www.adventureRVkcmetro.com)