

2005 Spirit



America TRAVEL TRAILERS & FIFTH WHEELS

2005 Spirit



America TRAVEL TRAILERS & FIFTH WHEELS



Leadership the Great OutdoorsSM



Recreational Vehicles

2005 Spirit America LITE TRAVEL TRAILERS

"OLD GLORY" STANDARD FEATURES

INTERIOR AND DECOR

- Ashland Oak Cabinetry
- Linoleum Flooring
- Mini Blinds - Coach
- Mini Blinds - Bedroom (Except w/Bunks)
- Jack Knife Sofa (241FK, 249QB)

- Booth Dinette
- Techwood® Drawers
- LP Leak Alarm
- Smoke Detector
- Fire Extinguisher

GALLEY

- Microwave Ready
- 3-Burner (Hi-Output) Range Top w/Pots and Pans Drawer
- Power Range Hood
- Large Single Door Refrigerator
- Monitor Panel
- Stainless Steel Sink
- Silverware Drawer

SLEEPING

- Queen Bed (249QB)
- Double Bed (241FK, 248TB)
- Bunk Beds (248TB)
- Deluxe Innerspring Mattress - 312 Coil

Bedspread

ELECTRICAL/HEATING/ AIR CONDITIONING

- GFI Circuit
- Outside Receptacle GFI
- Patio Light
- LP Light
- TV Antenna
- Cable TV Jack
- Double 20 LB LP Bottles w/Auto Change-Over
- 25,000 BTU E.I. Furnace
- 13,500 BTU Roof Air Conditioning

BATH AND WATER

- Marine Toilet
- Power Bath Vent
- 6-Gallon Gas Water Heater

Water Heater By-Pass Valve

- Demand Water Pump
- Decorative Bath Hardware
- Medicine Cabinet

EXTERIOR/CONSTRUCTION

- White Safety Glass Radius Windows
- Pass Through Storage
- Rubber Roof
- Fiberglass Insulation
- Gutter Rail with Awning Rail
- Single Entry Step
- Dead Bolt Lock
- Radial Tires
- Rally Wheels
- Fender Skirts
- One-Piece Polyethylene Wheel Wells
- Break Away Switch
- Patio Awning
- Diamond Plate Stone Guard and Bumper Cover
- Owner's Information Guide

"LIBERTY"

OPTION PACKAGE

- Old Glory Features Plus:
- 12V AM/FM CD Stereo
- 3-Burner Range w/Oven
- Double Door Refrigerator
- Microwave Oven
- 6-Gallon Gas E.I. Water Heater
- One-Piece ABS Tub Surround
- Outside Shower
- Skylight
- Partial Carpet w/Pad (Except 241FK)
- Stow-N-Go™ Rear Garage Storage (241FK, 248TB)



STOW-N-GO™
By Coachmen

ADDITIONAL OPTIONS

- Straight Axle w/15" Wheels and Double Entry Step
- CSA Upfit

DECOR SELECTIONS

- Princeton Pine
- San Diego Sand



SPECIFICATIONS

	241FK	248TB	249QB
Base Weight	4,436	4,534	4,240
GVWR (lbs.)	6,190	6,260	6,030
Carrying Capacity	1,754	1,726	1,790
Hitch Weight	750	660	430
Axle Weight	3,686	3,874	3,810
Interior Height	76"	76"	76"
Exterior Height*	9' 4"	9' 4"	9' 4"
Exterior Length	25' 6"***	25' 3"***	25' 6"
Exterior Width	7' 10"	7' 10"	7' 10"
Hitch Pin Height	17"	17"	17"
Sleeping Capacity	6	6	6
Fresh Water Capacity (gal.)	32	27	27
Waste Water Capacity (gal.)	34	33	33
Grey Water Capacity (gal.)	32	32	32
Water Heater Capacity (gal.)	6	6	6
LP Gas Capacity (lbs.)	40	40	40
Furnace Rating (x1000) BTU	25	25	25
Tire Size	X	X	X

* Add 10" For Roof Air Conditioner

X = ST175/80R13C

† Estimated

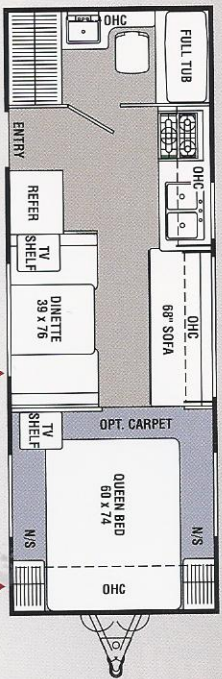
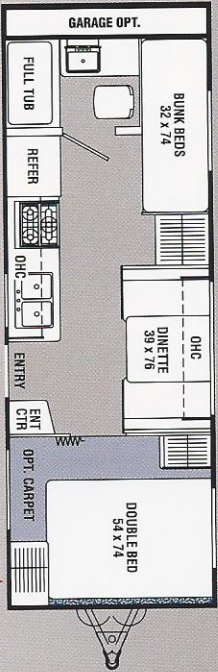
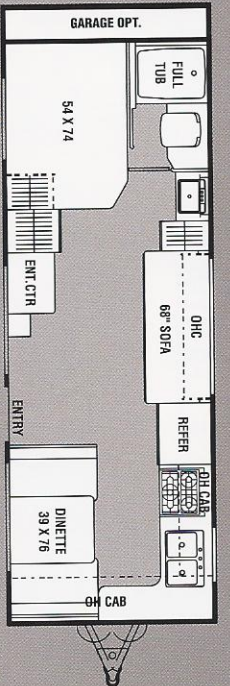
** Add 18" for Stow-n-Go® Rear Garage

Base Weight: The weight of the unit with no fluids, cargo, optional equipment or accessories.

GVWR (Gross Vehicle Weight Rating): The maximum permissible weight of the unit, including the Base Weight plus all fluids, cargo, optional equipment and accessories. For safety and product performance, do not exceed the GVWR.

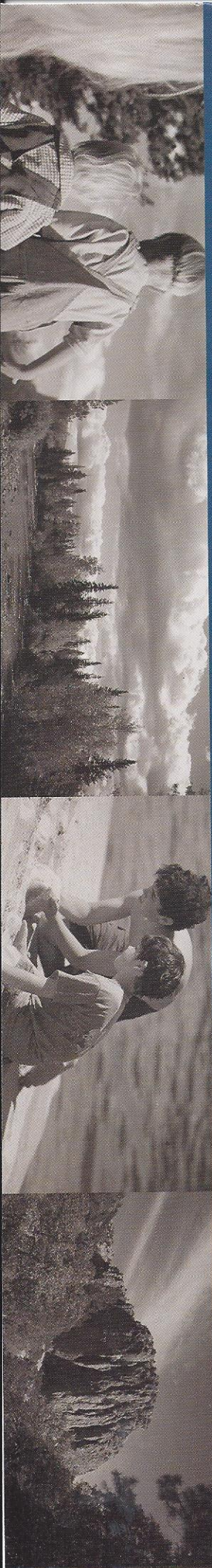
Carrying Capacity: The difference between the Base Weight and the GVWR. This is the amount of weight available for all fluids, cargo, optional equipment and accessories. The actual "loaded" weight will depend on the equipped unit and the owner's individual choice of cargo, etc.

All information contained in this brochure is believed to be accurate at the time of publication. However, during the model year, it may be necessary to make revisions and Coachmen reserves the right to make all such changes without notice, including changes in prices, colors, materials, equipment and specifications, as well as the addition of new models and the discontinuance of models shown in this brochure. Therefore, please consult with your Coachmen dealer and confirm the existence of any materials, design or specifications that are material to your purchase decision.



LEGEND

- CARPET
- VINYL
- STORAGE



2005 Spirit America MID-SIZE TRAVEL TRAILERS

STANDARD FEATURES

INTERIOR AND DECOR

- Ashland Oak Cabinetry
- Residential Metal Drawer Guides
- Hardwood Mortise and Tenon Cabinet Doors w/Flat Panels
- Main Slideroom Overheads
- Linoleum Flooring - Kitchen and Bath
- Partial Carpet and Pad - Living and Bedroom
- Mini Blinds - Coach
- Mini Blinds - Bedroom (N/A with Bunks)
- Booth Dinette
- Swivel Rocker (291FLS, 297RKS)
- Jackknife Sofa
- LP Leak Alarm
- Fire Extinguisher
- Techwood® Drawers

GALLEY

- Power/Lighted Range Hood
- 3-Burner Cooktop
- Double Door Refrigerator
- Monitor Panel
- Knife Holder
- Stainless Steel Sink

SLEEPING

- Queen Bed
- Triple Bunks (300TBS)
- Deluxe Innerspring Mattress - 312 Coil

Bedspread

- Bedlift System on Island QB

ELECTRICAL/HEATING/ AIR CONDITIONING

- 30-Amp Service
- Pre-Wired for Phone
- Outside Receptacle GFI
- Patio Light
- LP Light
- Double 30 lb. LP Bottles w/Auto Change over
- 30,000 BTU E.I. Furnace (297RKS, 300TBS)
- 34,000 BTU E.I. Furnace (291FLS)
- In-Floor Ducted Heat

BATH AND WATER

- Marine Toilet
- Power Bath Vent
- Water Heater By-Pass Valve

Demand Water Pump

- One-Piece ABS Tub Surround
- 6-Gallon Water Heater
- Decorative Bath Hardware
- Medicine Cabinet
- Power Roof Vent

Below Floor Low Point Drains

- Rubber Roof
- Fiberglass Insulation
- Gutter Rail
- Radius Entrance Door
- Radius Baggage Doors
- Rear Hose Storage Steel Bumper
- Triple Entry Steps - Primary Door
- Dead Bolt Lock(s)
- Secondary Entrance Door (291FLS)
- Rack and Pinion Slide-Out Room
- Flush Floor Slide-Out Room
- Retractable Stabilizer Jacks
- Straight Axles
- Rally Wheels
- Clear Safety Glass Radius White Windows
- Metal Siding w/Colored Lower
- I-Beam Chassis Construction

EXTERIOR/CONSTRUCTION

- Diamond Plate Front Stoneguard
- Diamond Plate Bumper Cover
- Cable TV Jack
- Patio Awning

OPTION PACKAGES

OLD GLORY EDITION (Included Features)

- TV Antenna and Rotor Package
- TV Shelf - Bedroom
- 13,500 BTU Ducted Roof Air Conditioner

LIBERTY EDITION (Included Features)

"Old Glory Edition"

Features Plus:

- LP Bottle Cover
- Spare Tire Kit
- Outside Shower
- Roof Ladder
- Slideout Room Awning
- 3-Burner High-Output Range with Oven
- Deluxe Hide-A-Bed Sofa
- AM/FM Stereo w/CD Player
- Microwave Oven
- Phone Jack
- 6-Gallon Gas/Electric E.I. Water Heater

- Owner's Information Package (Consists of: Owner's Manual, Maintenance Troubleshooting Guide and Product Warranty Summary)

DECOR SELECTIONS

- Princeton Pine
- San Diego Sand



2005 Spirit America FIFTH WHEELS



STANDARD FEATURES

INTERIOR AND DECOR

- Ashland Oak Cabinetry
- Residential Metal Drawer Guides
- Partial Carpet with Pad
- Linoleum Flooring - Kitchen and Bath

- Mini Blinds - Coach
- Mini Blinds - Bedroom (N/A with Bunks)

- Booth Dinette
- Jack Knife Sofa

- One Swivel Rocker (528RKS)
- Two Swivel Rockers (526RLS)

- Hardwood Mortise and Tenon Cabinet Doors w/Flat Panels

- Slideroom Overhead Cabinets
- LP Leak Alarm

- Fire Extinguisher
- Smoke Alarm

GALLEY

- 3-Burner Cooktop
- Power/Lighted Range Hood
- Double Door Refrigerator

- Stainless Steel Sink
- Knife Holder

- Monitor Panel

SLEEPING

- Queen Bed
- Triple Bunk Beds (525TBS)
- Deluxe Innerspring Mattress (QB) - 312 Coil

- Bedspread

- Bedlift System on Island QB
- Laundry Chute (528RKS)

ELECTRICAL/HEATING/ AIR CONDITIONING

- 30-Amp Service

- Outside Receptacle GFI

- Patio Light

- LP Light

- Double 30 lb. LP Bottles w/Auto Change over

- 25,000 BTU E.I. Furnace (525TBS, 526RLS)
- 30,000 BTU E.I. Furnace (528RKS)

- In-Floor Ducted Heat
- Prewired for Phone

BATH AND WATER

- Marine Toilet

- Power Bath Vent

- One-Piece ABS Tub Surround

- 6-Gallon Water Heater

- Water Heater By-Pass Valve

- Demand Water Pump

- Decorative Bath Hardware

- Medicine Cabinet

- Below Floor Low Point Drains

EXTERIOR/CONSTRUCTION

- Rubber Roof

- Fiberglass Insulation

- Gutter Rail

- Rear Hose Storage Steel Bumper

- Triple Entry Steps - Primary Door

- Dead Bolt Lock(s)

- Electric Rack and Pinion Slide-Out Room

- Flush Floor Main Slide-Out Room

- Retractable Stabilizer Jacks

- Straight Axles

- Rally Wheels

- Clear Safety Glass Radius White Windows

- Wrapped Lower Sidewalls

- Radius Entrance Door

- Radius Baggage Doors

- Metal Siding

- I-Beam Chassis Construction

OPTION PACKAGES

OLD GLORY EDITION (Included Features)

- 13,500 BTU Ducted Roof Air Conditioner

- Patio Awning

- TV Antenna and Rotor Package

- Cable TV Jack

- Bedroom TV Shelf

- Diamond Plate Bumper Cover

LIBERTY EDITION (Included Features)

- "Old Glory Edition" Features

Plus:

- Microwave Oven

- AM/FM Stereo w/CD Player

- Phone Jack

- Deluxe Hide-A-Bed Sofa

- Roof Ladder

- Slideout Room Awning

- Spare Tire

- 6-Gallon Gas/Electric E.I. Water Heater

- Outside Shower

- 3 Burner High-Output Range with Oven

- Owner's Information Package (Consists of: Owner's Manual, Maintenance Troubleshooting Guide and Product Warranty Summary)

ADDITIONAL OPTIONS

- Double Bunk w/Side Garage Storage (525TBS)

- Power Electric Jacks

- Shock Absorbers

DECOR SELECTIONS

- Princeton Pine

- San Diego Sand

SPECIFICATIONS

	525TBS	526RLS	528RKS
Base Weight	6,704	6,664	7,300†
GVWR	8,600	8,600	10,000†
Carrying Capacity	1,896	1,936	2,700†
Hitch Weight	1,420	1,350	1,450†
Axle Weight	4,284	5,314	5,850†
Interior Height (Bedroom)	5' 4"	5' 4"	6' 2"
Exterior Height*	11' 2"	11' 2"	11' 6"
Exterior Length	27' 11"	27' 5"	31' 3"
Exterior Width	8' 2"	8' 2"	8' 2"
Hitch Pin Height	45"	45"	45"
Sleeping Capacity	8	6	6
Fresh Water Capacity (gal.)	42	42	42
Waste Water Capacity (gal.)	37	37	37
Grey Water Capacity (gal.)	37	37	37
Water Heater Capacity	6	6	6
LP Gas Capacity (lb.)	60	60	60
Furnace Rating (x1,000)	25	25	30
Tire Size	X	X	X

*Add 8" for Roof Air Conditioner

X = ST225/75D15C

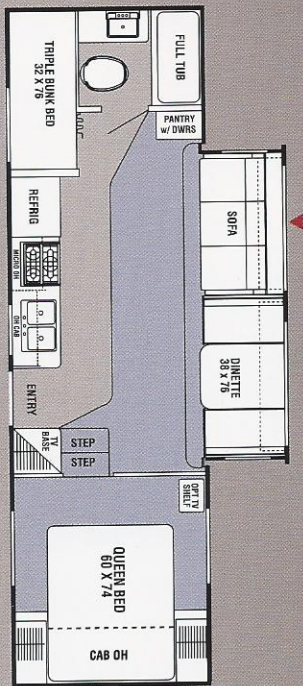
† Estimated

Base Weight: The weight of the unit with no fluids, cargo, optional equipment or accessories.

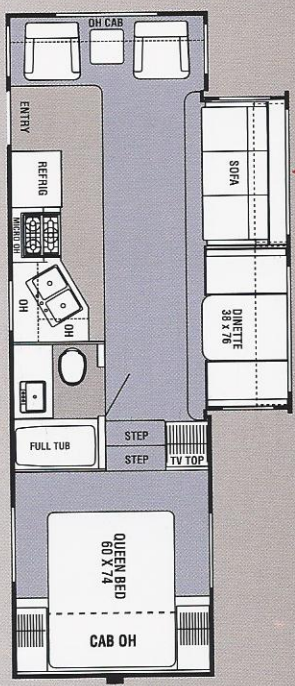
GVWR (Gross Vehicle Weight Rating): The maximum permissible weight of the unit, including the Base Weight plus all fluids, cargo, optional equipment and accessories. For safety and product performance, do not exceed the GVWR.

Carrying Capacity: The difference between the Base Weight and the GVWR. This is the amount of weight available for all fluids, cargo, optional equipment and accessories. The actual "loaded" weight will depend on the equipped unit and the owner's individual choice of cargo, etc.

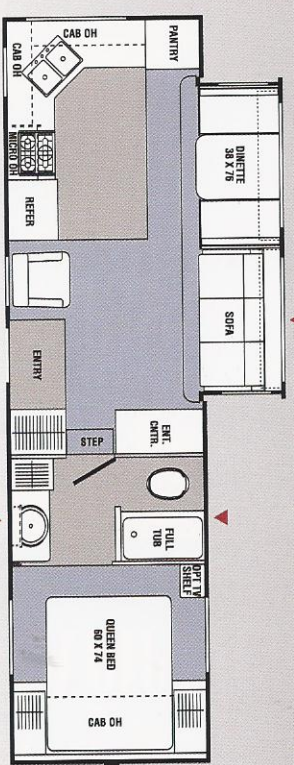
All information contained in this brochure is believed to be accurate at the time of publication. However, during the model year, it may be necessary to make revisions and Coachmen reserves the right to make all such changes without notice, including changes in prices, colors, materials, equipment and specifications, as well as the addition of new models and the discontinuance of models shown in this brochure. Therefore, please consult with your Coachmen dealer and confirm the existence of any materials, design or specifications that are material to your purchase decision.



525TBS



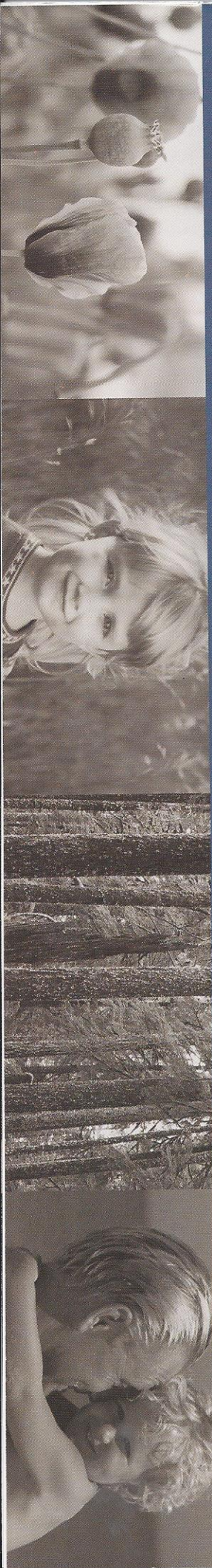
526RLS



528RKS

LEGEND

- CARPET
- VINYL
- STORAGE



2005 Spirit America TRAVEL TRAILERS & FIFTH WHEELS

DISCOVER THE COACHMEN ADVANTAGES

Service After the Sale

Industry Leading Buckstopper™ Warranty

Coachmen's exclusive Buckstopper™ Limited Warranty provides coverage on most parts, components and appliances. Coachmen stands behind their product and is supported by a network of over 300 service centers.

Two Year Structural & Major Components Manufacturer's Warranty

Coachmen provides a two-year structural and major components manufacturer's warranty, along with a complete written Warranty Summary Guide, for your peace of mind.

Comprehensive Owner's Information

For your convenience we offer published materials on key equipment and options, as well as information pertaining to the function of important components. We also offer a true Trouble Shooting and Maintenance Guide for the simple answers to frequently asked questions.

Toll Free Service Numbers

These toll free phone numbers provide you with direct access to a Coachmen RV Service Representative.

Dealer Support Tools

Coachmen makes sure that their dealers are well equipped and trained to service your needs with: Systems Manuals, PDI Manuals, Electronic Parts Catalogs, Coach-link® "On-Line" Electronic Dealer Communication System, and continual service training.



Coachmen®

Recreational Vehicles

COACHMEN RECREATIONAL VEHICLE COMPANY, LLC

P.O. Box 30, Middlebury, IN 46540

P.O. Box 948, Fitzgerald, GA 31750



Visit our website at: www.coachmenrv.com

©2004 Coachmen Recreational Vehicle Company, LLC ■ All Rights Reserved ■ Litho in USA 6/04

Service Support Center Web Site

Coachmen provides you access to key information 24-hours a day through the Internet. On-line you can find a Service Dealer Locator, Maintenance Information, Trouble Shooting Information, Product Warranty Information, Customer "E-Assistance", Frequently Asked Questions (FAQs), and Publications ordering dating back to 1972 models.

Priority Parts Ordering

Coachmen provides a program for overnight parts shipment in critical repair situations.

Coachmen Caravan Camping Club™

Coachmen Caravan Camping Club is your ticket to making friends for life. Share old stories and make new, in the company of fellow Coachmen Caravan members. With the purchase of a Coachmen RV, you are invited to join the nation's largest manufacturer sponsored RV club with a **FREE 1st year basic membership or discounted Platinum membership**. As part of the Coachmen Caravan family, you will receive incredible membership benefits that will help to ensure your safety and enjoyment throughout your RV experiences. Enjoy your Coachmen RV more with the Coachmen Caravan Camping Club.

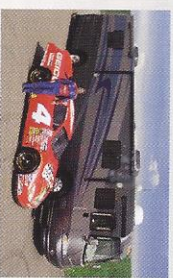


Leader to the Great Outdoors®

Coachmen RV Company is a proven leader in the RV Industry with 40 years of experience. We are dedicated to providing a high quality, reliable, and innovative product backed by high quality service support. Our mission is simple...to meet and exceed your expectations and to make your total RV experiences memorable and enjoyable!

Life in the Fast Lane

NASCAR driver Mike Wallace makes a Coachmen RV motorhome his home on the road. The middle brother of auto racing's famed Wallace family, Mike is a veteran of NASCAR's racing circuit.



Jerry's Trailers & Campers
2601 South 13 St.
Norfolk, NE 68701
(402) 371-1306