

SOMERSET™ FIFTH WHEELS BY COACHMEN

Somerset™



ALUMICAGE
CONSTRUCTION
By Coachmen



Leader to the Great Outdoors®

Somerset™

FIFTH WHEELS

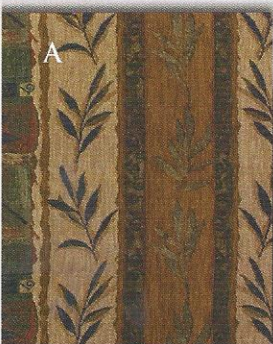
The Somerset™ by Coachmen sets the standard for today's travel lifestyle with an impressive living space that's a pleasure to own for those seeking adventure, flexibility, security and fun.



Capture your dreams in the Somerset. Step inside and discover the many luxurious features like the designer sofa, Euro chair recliners, designer window treatments, residential style lighting package, and there is even a standard coffee table.

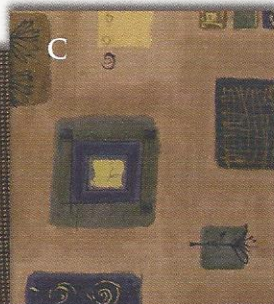
DECOR SELECTIONS

FABRIC KEY: A. Main • B. Accent • C. Bedspread



**RIVER
WHEAT**

B



C



**SERENE
SILVER**

B

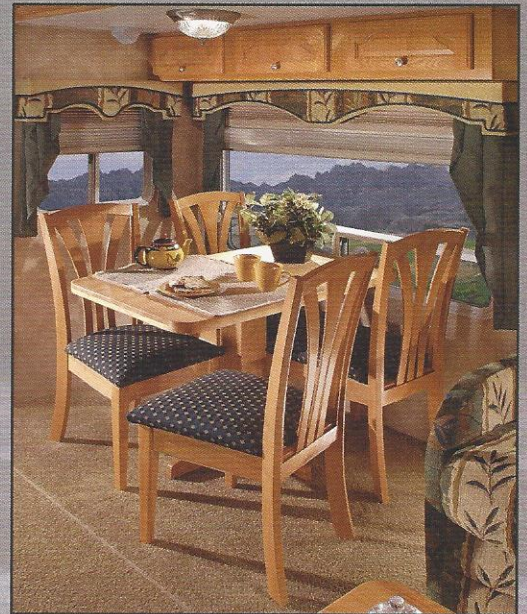
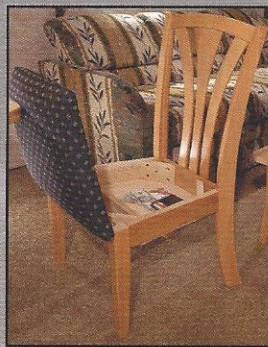


C

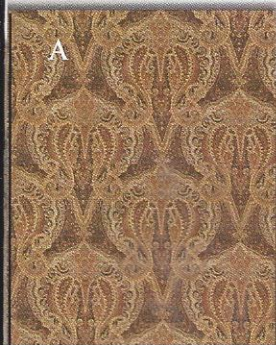
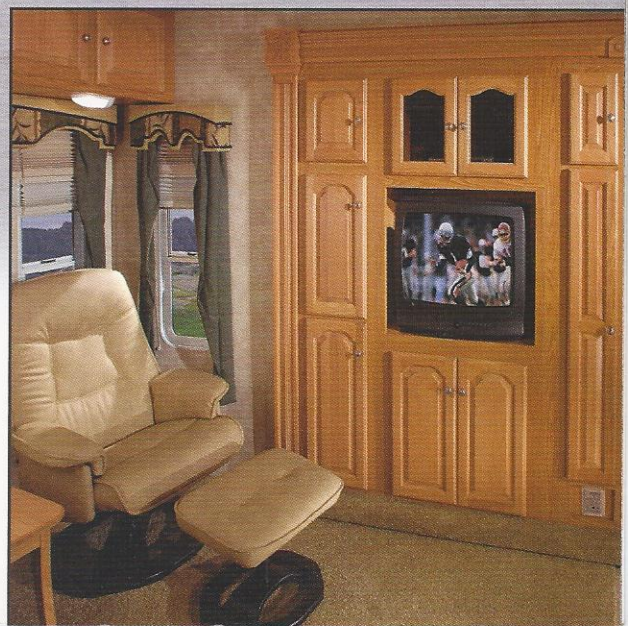


Somerset's full service kitchen will make you feel like a gourmet chef! This creative cooking space is one that you can appreciate using time and time again. Residential features abound like the solid surface countertops with integrated sink, deluxe faucet with pullout sprayer, hardwood cabinet doors, and plenty of cabinet storage.

Enjoy your freshly prepared meals at the available residential dinette. Four freestanding chairs even have a flip-up cushion that is a perfect storage place for some of your smaller items.

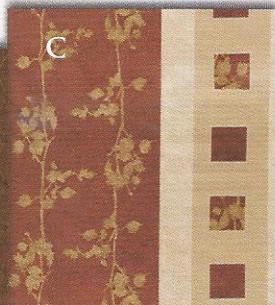


A standard Dolby Digital 5.1 surround sound system creates "Cinema" style sound, while you watch your favorite movies or shows in front of the well equipped entertainment center with optional 27" television. An optional fireplace is also a great way to relax at the end of an action packed day.



CINNABAR SAND

B



Somerset™

FIFTH WHEELS

Every Somerset offers full width wardrobe storage across the front combined with generous drawer storage. Pack a little or pack a lot, there is room for your wardrobe no matter how long your stay.



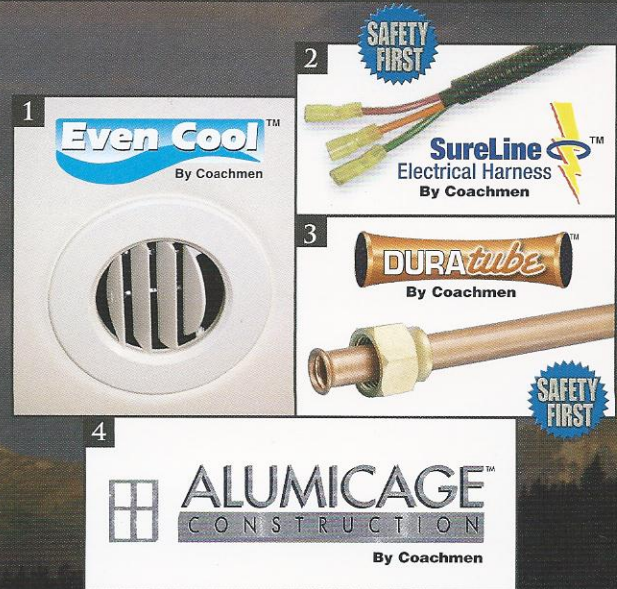
Get the day started right with a spacious bath and shower area. The large radius shower gives you the elbow room you need, and the sink area provides ample countertop space with a convenient medicine cabinet above and additional storage below.

The space expanding bed slideout and residential 80" long queen bed give you plenty of room to rest and refresh in the Somerset's bedroom suite. The upscale appeal of the Somerset bedroom is seen throughout with the designer headboard, upscale quilted bedspread, and designer window treatments.




ASK YOUR DEALER ABOUT THESE COACHMEN EXCLUSIVE FEATURES

1. Coachmen's *Even Cool™* air conditioning system is ducted through the crowned roof, and utilizes AMOCO® insulated ductwork with radiused corners to provide for maximum cooling efficiency.
2. Coachmen's *SureLine™* Electrical Harness provides color coded wiring and specific wiring schematics for easy serviceability. High quality automotive electrical connectors and autoloom protective covering make for a reliable and durable harness. The wires are grouped together and neatly tucked into the framework under the coach, safe from road debris.
3. All Somerset fifth wheels utilize *Duratube™* full length copper LP lines with double flared ends to ensure a tight seal and years of corrosion free use. Quality built for the long haul...Coachmen.
4. All Somerset fifth wheels feature *Alumicage™* construction. This lightweight, corrosion resistant, aircraft grade aluminum material is utilized throughout the walls for superior strength and light weight.



TAKE A CLOSER LOOK AT COACHMEN QUALITY & CONSTRUCTION

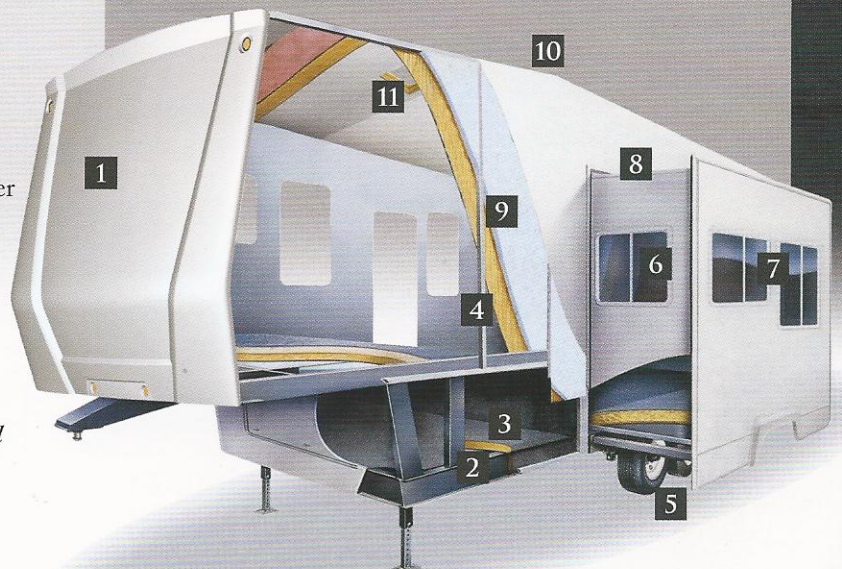
1. The eye catching and aerodynamic fiberglass front and rear caps are a standard feature on all Somersets™.
2. I-Beam chassis framing with full width steel outriggers and cross members provides a long lasting and durable foundation for the coach to be built on.
3. A large pass through storage bay provides plenty of storage for all of your goods.
4. All Somerset Fifth Wheels feature Alumicage™  construction. This lightweight, corrosion resistant, aircraft grade aluminum material is utilized throughout the walls for superior strength and light weight.
5. Adjustable leaf spring suspension and brakes are on all wheels along with automotive studded hubs and lug nuts. Standard E-Z Lube axles make it simple to keep your unit running smoothly.
6. Functional windows on the slideroom ends provide increased air circulation while the Jalousie bedroom windows tilt out design lets the window be open for ventilation even when it is raining outside.
7. We use only radius clamp ring windows, which have no exterior fasteners or screw covers. We then seal our windows with butyl-encapsulated foam for years of trouble free use.
8. We taper the slideroom roof to assure a controlled water run-off.
9. The sidewalls are vacuum bond laminated for outstanding strength.
10. Seamless rubber roofs are crowned to allow controlled water run-off, which helps prevent leaks.
11. All roof openings are double sealed with butyl tape and a self-leveling adhesive for a superior watertight seal.

Additional Value Added Construction Features:

- We insulate around the refrigerator to improve operating efficiency and prolong the trouble free life of the refrigerator.
- Convenience lights are strategically located for maximum exterior visibility.
- Wood cabinets are screwed together, and then screwed into backers laminated in the sidewalls. They stay secure for the long haul.
- Water tanks are heated and enclosed for year round use.
- We believe in our products and back them with a two-year structural and major components manufacturer's warranty.



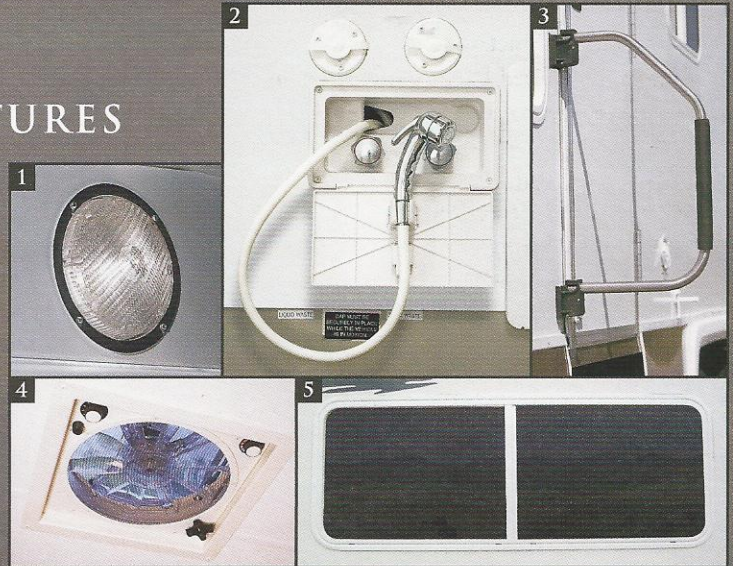
Somerset features multiple exterior locking storage compartments with radiused baggage doors. Door latches secure the doors while you stow your gear.



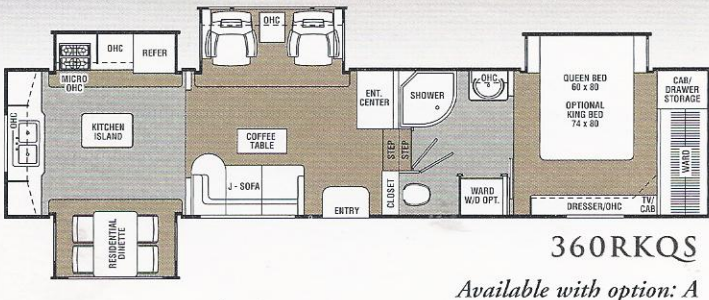
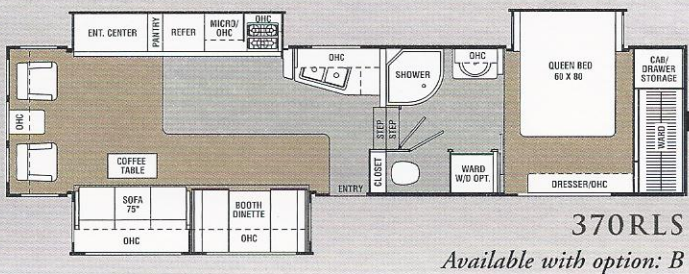
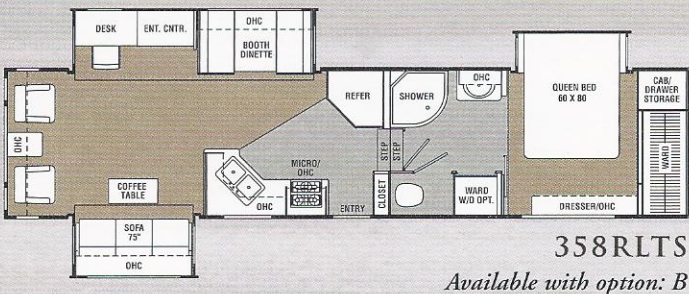
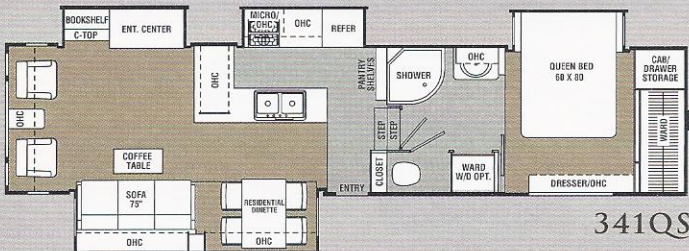
SOMERSET™

FIFTH WHEELS COACHMEN VALUE ADDED FEATURES

1. The security lights are mounted up high on both sides of the coach to provide superb exterior illumination at night.
2. The optional outside shower features an ergonomically designed sprayer and can be conveniently tucked away in its own storage bay.
3. The large exterior grab handle folds flat against the unit for safe travel and opens to provide a sturdy hand hold when entering and exiting the unit.
4. The optional Fantastic Fan™ features a rain sensor, variable speed control and a wall mount control panel for easy reach.
5. By trapping air between two sheets of tinted GL-20 type glass, the optional tinted thermopane windows maximize heating and cooling efficiency and help to reduce harmful UV rays.



SOMERSET™ FLOORPLANS



SPECIFICATIONS	341QS	358RLTS	370RLS	360RKQS
Base Weight	10,812	10,217	10,150	11,200†
GVWR	13,170	13,050	12,730	13,600†
Carrying Capacity	2,358	2,833	2,580	2,400†
Hitch Weight	2,370	2,250	2,330	2,400†
Axle Weight	8,442	7,967	7,820	8,800†
Interior Height	7'5"	7'5"	7'5"	7'5"
Exterior Height*	12'9"	12'7"	12'7"	12'9"
Exterior Length	37'2"	37'2"	37'2"	38'5"
Exterior Width	8'3"	8'3"	8'3"	8'3"
Hitch Pin Height	49"	47"	47"	49"
Sleeping Capacity	4/6	4/6	4/6	2/4
Fresh Water Capacity (gal.)	47	47	47	47
Waste Water Capacity (gal.)	30	30	30	30
Grey Water Capacity (gal.)	60	60	60	60
Water Heater Capacity (gal.)	10	10	10	10
LP Gas Capacity (lb.)	60	60	60	60
Furnace Rating (x 1,000)	40	40	40	40
Tire Size	■	■	■	■

* Add 4" for second A/C ■ = ST235/80R16D † = Estimated

Base Weight: The weight of the unit with no fluids, cargo, optional equipment or accessories.

GVWR (Gross Vehicle Weight Rating): The maximum permissible weight of the unit, including the Base Weight plus all fluids, cargo, optional equipment and accessories. For safety and product performance, do not exceed the GVWR.

Wider Widths: Numerous Coachmen floorplans feature the "wide body" design concept, which gives you significantly enhanced interior living space and innovative floorplans.

In making your purchase decision, you should be aware that a few states restrict access on some or all roads within the state to vehicle with a maximum 96" width, although special road usage permits may be available. Vehicles up to 102" in width are permitted in the vast majority of states. You should confirm the road usage laws in the states of interest to you before making your purchase decision. If width is of concern to you, we invite you to consider the broad array of other Coachmen models offered in the standard 96" width.

Carrying Capacity: The difference between the Base Weight and the GVWR. This is the amount of weight available for all fluids, cargo, optional equipment and accessories. The actual "loaded" weight will depend on the equipped unit and the owner's individual choice of cargo, etc.

All information contained in this brochure is believed to be accurate at the time of publication. However, during the model year, it may be necessary to make revisions and Coachmen reserves the right to make all such changes without notice, including changes in prices, colors, materials, equipment and specifications, as well as the addition of new models and the discontinuance of models shown in this brochure. Therefore, please consult with your Coachmen dealer and confirm the existence of any materials, design or specifications that are material to your purchase decision.

STANDARD FEATURES AND OPTIONS

INTERIOR AND DÉCOR

- Spicy Oak Cabinetry
- Hardwood Raised Panel Cabinet Doors
- Residential Metal Drawer Guides
- Techwood Drawer Sides
- Carpet with Pad (Living Room & Bedroom)
- Linoleum Flooring (Kitchen & Bath)
- Designer Window Treatments
- Oxford Innerspring Booth Dinette (Except 358RLTS, 370RLS)
- Residential Dinette w/4 Chairs (341QS, 360RKQS)
- Overhead Cabinets in Slide-Outs
- Jack Knife Sofa (J-Sofa on 360RKQS)
- (2) Euro Chairs w/Ottoman
- 5.1 Surround Sound System with DVD and CD player
- Freestanding End Table & Coffee Table
- Decorator Clock
- LP Leak Alarm
- CO Detector
- Fire Extinguisher
- Smoke Detector
- Flush Floor Transition From Bath To Bedroom

GALLEY

- 3-Burner (High Output) Range with 21" Oven
- Power/Lighted Range Hood
- Fluorescent Light Over Sink
- Large Double Door Refrigerator
- Solid Surface Kitchen Countertop w/Integrated Sink
- Kitchen Faucet w/Pull-Out Sprayer
- Island w/Butcherblock Countertop (360RKQS)
- Silverware/Utensil Drawer
- Trash Can
- Spice Rack
- Key Hooks

SLEEPING

- Residential 80" Long Queen Bed
- Deluxe Innerspring Mattress
- Bedlift Storage System
- Designer Bedspread
- Residential Style Headboard

ELECTRICAL

- 50-Amp Service
- GFI Circuit
- Outside Receptacle GFI
- Patio Light
- Off Door Side Utility Light

- 55 Amp Electronic Converter
- Hitch Light
- Upgraded Interior Lighting Package
- Detachable Power Cord
- Double 30 LB LP Bottles w/Auto Change-Over
- 40,000 BTU E.I. Furnace
- In-floor Ducted Heat
- Wire and Frame for 2nd A/C
- Monitor Panel
- Pre-wired for Satellite Dish
- Pre-wired for Phone
- Cable TV Jack
- TV Antenna w/Booster and Rotor Package

BATH AND WATER

- Porcelain Toilet w/Foot Pedal
- Power Bath Vent
- One-Piece ABS Shower Surround
- Towel and Tissue Holder in Bath
- Water Heater By-Pass Valve
- Demand Water Pump
- Medicine Cabinet
- Enclosed Heated Tanks
- Below Floor Low Point Drains
- Gravity and City Water Hookups
- Waste Tank Flush

EXTERIOR/CONSTRUCTION

- Rubber Roof
- Gutter Rail
- 30" Wide Radius Entrance Door
- Hose Storage Compartment
- Triple Entry Steps w/Light
- Dead Bolt Lock
- Rack and Pinion Slide-Out
- Flush Floor Main Slide-Out Room
- Retractable Stabilizer Jacks on Rear
- Dexter EZ-Lube Axles
- 16" Radial Tires
- Rally Wheels
- Adjustable Spring Hangers
- Clear Safety Glass Windows
- I-beam Chassis Construction
- Extended Hitch Pin
- Stone Guard Wrapped Lower Sidewalls
- Radius Baggage Doors
- Fold-Away Exterior Grab Handle
- Aluminum Framed/Laminated Sidewalls
- Enclosed Underbelly
- Front and Rear Fiberglass Caps
- Large Pass-Thru Storage
- Break Away Switch

OPTIONAL FEATURES

- Somerset Package Includes:**
 - Deluxe Innerspring Quilted Mattress
 - Day/Night Shades - Coach
 - Night Shades - Bedroom
 - Sink Covers
 - Six Panel Refrigerator Door Insert
 - 15,000 BTU A/C w/Quick Cool (Coach)
 - Range Cover
 - Residential Size Microwave
 - 10-Gallon Gas/Electric E.I. Water Heater
 - Radius Glass Shower Door
 - Outside Shower
 - Bathroom Skylight
 - Washer/Dryer Ready
 - Tinted Safety Glass Windows
 - Electric Front Jacks
 - Spare Tire Kit
 - Roof Ladder
 - Shock Absorbers
 - Security Lights (Both Sides)
 - Patio Awning
 - Slide-Out Room Awnings

ADDITIONAL OPTIONS:

- Residential Dinette w/4 Chairs (Std 341QS, 360RKQS)
- Round Dinette Table w/4Chairs (360RKQS)
- King Bed (360RKQS)
- Deluxe Sofa w/ Hide-A-Bed
- Chrome Wheel Covers
- Combo: Washer and Dryer
- Two Swivel Recliner Chairs
- 27" Television
- 10 cu. ft. Double Door Refrigerator
- Fireplace
- Fantastic Power Vent w/Remote Switch & Rain Sensor
- Ceiling Fan w/Light Kit (Except 360RKQS)
- Thermopane Tinted Safety Glass Windows
- 2nd 13,500 BTU Ducted Roof A/C
- 5.5 Gas Generator (Installed by Onan)
- Automotive High Gloss Exterior
- Electric Rear Stabilizer Jacks
- Owners Information Package

Somerset™ FIFTH WHEELS BY COACHMEN RV



DISCOVER THE COACHMEN ADVANTAGES

SERVICE AFTER THE SALE

INDUSTRY LEADING BUCKSTOPPER™ WARRANTY –

Coachmen's exclusive Buckstopper™ Limited Warranty provides one-year coverage on most parts, components and appliances. Coachmen stands behind their product and is supported by a network of over 300 service centers.

TWO YEAR STRUCTURAL & MAJOR COMPONENTS MANUFACTURER'S WARRANTY –

Coachmen provides a two-year structural and major components manufacturer's warranty, along with a complete written Warranty Summary Guide, for your peace of mind.

COMPREHENSIVE OWNER'S INFORMATION –

For your convenience we offer published materials on key equipment and options, as well as information pertaining to the function of important components. We also offer a true Trouble Shooting and Maintenance Guide for the simple answers to frequently asked questions.



TOLL FREE SERVICE NUMBERS –

Our toll free phone numbers provide you with direct access to a Coachmen RV Service Representative.

DEALER SUPPORT TOOLS –

Coachmen makes sure that their dealers are well equipped and trained to service your needs with: Systems Manuals, PDI Manuals, Electronic Parts Catalogs, Coach-Link® "On-Line" Electronic Dealer Communication System and continual service training.

SERVICE SUPPORT CENTER WEB SITE –

Coachmen provides you access to key information 24-hours a day through the Internet. On-line you can find a Service Dealer Locator, Maintenance Information, Trouble Shooting Information, Product Warranty Information, Customer "E-Assistance", Frequently Asked Questions (FAQ's) and Publications ordering, dating back to 1972 models.

PRIORITY PARTS ORDERING –

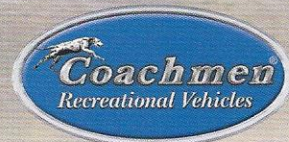
Coachmen provides a program for overnight parts shipment in critical repair situations.

COACHMEN CARAVAN CAMPING CLUB™

Coachmen Caravan Camping Club is your ticket to making friends for life. Share old stories and make new, in the company of fellow Coachmen Caravan members. With the purchase of a Coachmen RV, you are invited to join one of the nation's largest manufacturer sponsored RV clubs.



As part of the Coachmen Caravan family, you will receive incredible membership benefits that will help to ensure your safety and enjoyment throughout your RV experiences. Enjoy your Coachmen RV more with the Coachmen Caravan Camping Club.



Leader to the Great Outdoors®

Coachmen Recreational Vehicle Company, LLC ■ P.O. Box 30, Middlebury, IN 46540 ■ P.O. Box 948, Fitzgerald, GA 31750
Visit our website at: www.coachmenrv.com

©2005 Coachmen Recreational Vehicle Company, LLC - All rights reserved. Litho in USA 11/05

