

2005 CATALINA TRAVEL TRAILERS & FIFTH WHEELS



Fiberglass Sidewalls are standard on all Catalina® Travel Trailers and Fifth Wheels.

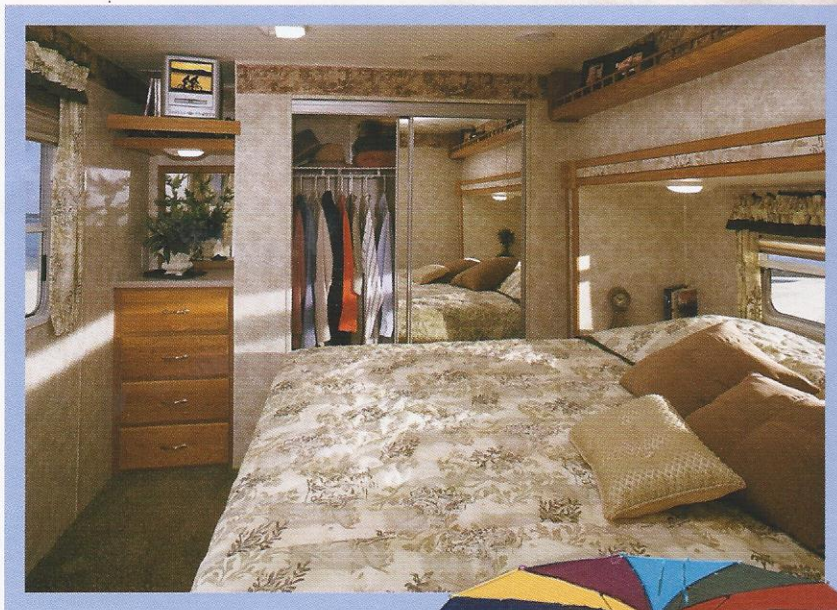
One of Life's Affordable Treasures

Leader in the Great Outdoors®

2005 CATALINA® . . .

. . . EXACTLY WHAT YOU WANT IT TO BE!

Each individual may have a different idea of what to do with their leisure time, but most people agree there simply isn't enough of it. That's why it's important to make every minute count. You can, with the affordable and value packed Catalina® Travel Trailers and Fifth Wheels. Catalina® is exactly what you want it to be...a second home at the lake; a weekend getaway; or an easy way to travel across the country. Whether you explore new territories or return to the solace of familiar ones, the Catalina® can take you there with the confidence and peace of mind that only Coachmen can deliver.



The bedroom of the Catalina® 734FKS features a spacious slideroom with a standard king size bed and designer bedspread. There is also plenty of wardrobe storage, a pull out TV shelf, and a dresser/vanity with mirror.



Decor Selections

Dazzling interiors feature skillfully coordinated upholstery and window treatments. Coachmen RV chooses only top-grade fabrics wear-dated as heavy-duty. These fabrics have been tested for durability beyond 15,000 double rubs (in and out action) to simulate heavy usage. An average chair in an American home is subjected to only 3,000 double rubs per year.





The spacious interior of the Catalina® features a flush floor slideroom, raised panel hardwood cabinet doors throughout, slideroom overhead cabinets, designer box valances, coat rack, designer lighting package and plenty of interior storage.

Fabric Key—A. Main B. Accent C. Bedspread



Tarragon Moss



Elegant Cabernet



Almond Truffle

FEATURES GALORE...

Discover **Catalina**® travel trailers and fifth wheels by Coachmen, and see the outstanding safety and value that is designed into every coach. These value packed coaches have features galore to enhance your RV'ing experience. It is sometimes the things you can't see like our **SureLine**™ Electrical Harness and **Duratube**™ LP lines that set us apart from the crowd, while other times it is the items that are easily visible. Take a minute to see just a few of the benefits that set us apart from the rest.

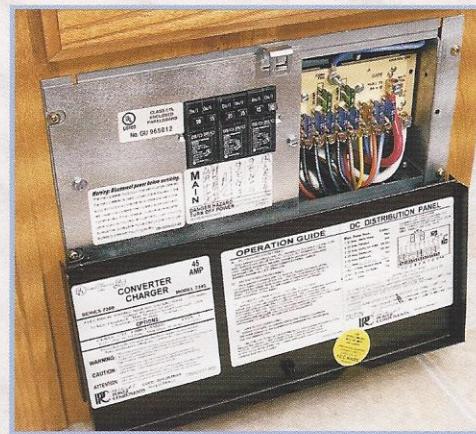


SAFETY FIRST

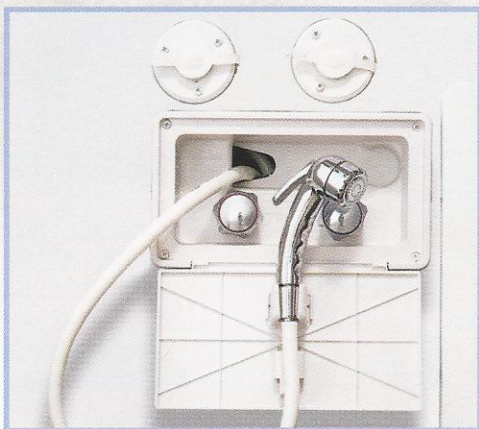
All Coachmen RV products come standard with an LP leak detector, fire extinguisher and smoke detector for your safety.



Exterior lighted storage has been utilized to its fullest with multiple locking storage door locations. All baggage doors are radiused to eliminate snags and scratches as you walk by. Convenient door latches are also provided to hold the storage doors open while you grab your gear. (Available most models)



The electronic converter is whisper quiet for a good nights sleep. It also provides a more consistent power.

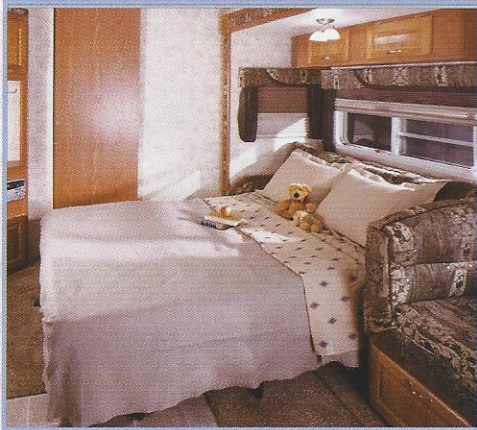


The outside shower features an ergonomically designed sprayer and can be conveniently tucked away in its own storage bay.

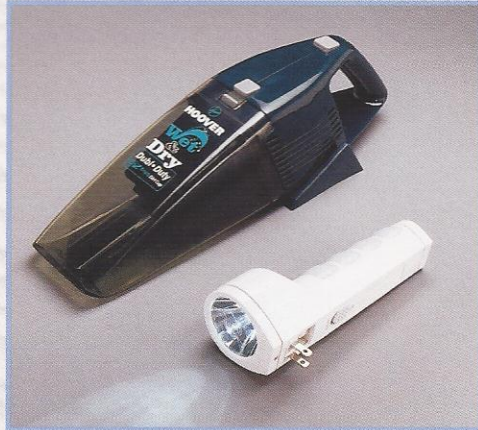


The double door refrigerator is designed for maximum storage capacity with door storage and a handy freezer shelf. A convenient refrigerator light is also standard for those midnight cravings.





The standard Hide-A-Bed sofa provides comfortable seating during the day and easily folds out into a large bed for your guests at night.



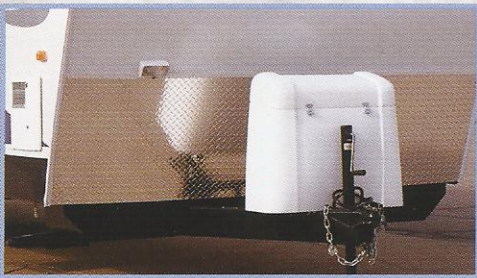
A rechargeable flashlight and rechargeable wet/dry vacuum make up the optional convenience package. With customized space for the items designed right into the coach, they are out of the way yet still within short reach when necessary.



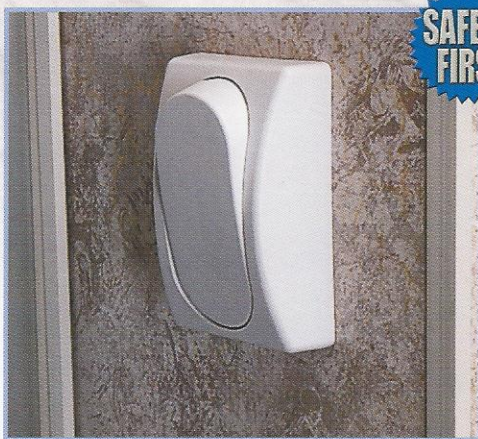
Standard metal drawer guides with glide wheels provide a friction free sliding drawer that is extremely durable. The drawer guides also act as a catch so that the drawer will not slide open during travel. Simply lift up and pull to open the drawers.



The standard slideroom awning expands and contracts with the slideroom to keep the exterior elements off of the slideout roof. This eliminates the need to climb up and brush off the dust and debris buildup that can occur over time. (Select Models)

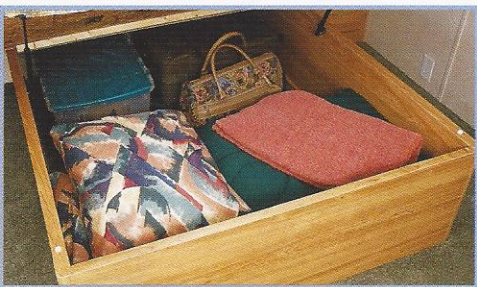


The diamond plate stone guard and bumper cover provides a durable layering that is extremely resistant to stone chips and other road debris that you may come across in your travels.



SAFETY FIRST

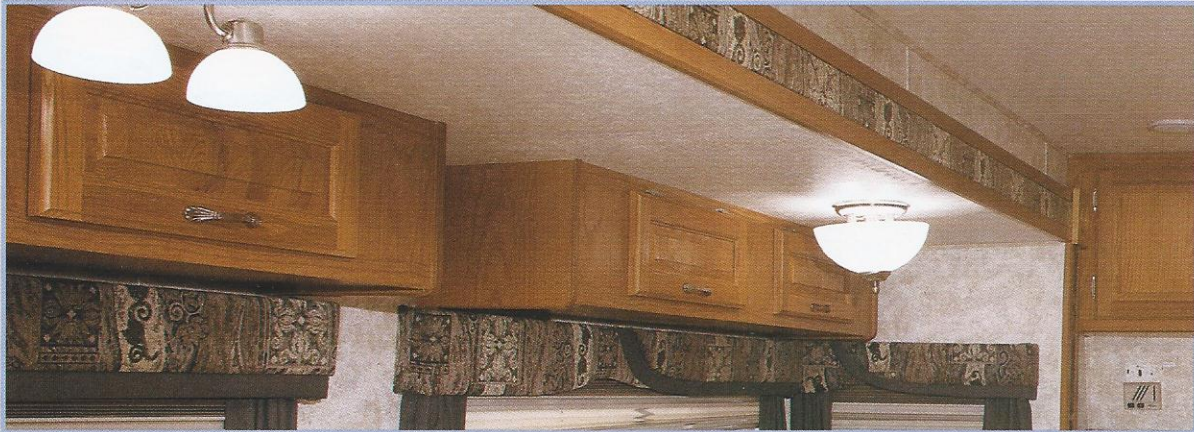
Don't fumble around late at night looking for a tiny light switch. The extra large toggle wall switches are conveniently located and can be flipped on/off with the palm of your hand.



All island queen beds have a large storage bay underneath that is easily accessible with the help of two gas struts.

FEATURES GALORE

Continued...



Standard **slideroom overhead cabinets** provide valuable additional interior storage space for your books, cd's and other traveling necessities.



Gutter rails funnel water to the drip caps which act as a small downspout to channel water out away from the sidewalls of the unit.



The optional **patio door** is a great way to open up your RV with more light and a residential feel. (Select Models)



The optional **Grill-2-Go™** offers you the ultimate grilling machine. Lightweight, durable and extremely functional, this grill was designed to give you the opportunity for a grilling extravaganza. (Select Models)



The standard **E-Z Lube axles** make for simple maintenance of your rig.



Ask Your Dealer About These Coachmen Exclusive Design Features.

**STOW
-N-
GO™**
By Coachmen

The enormous rear garage storage easily opens with the assistance of 2 gas struts. There is plenty of storage space with several shelves and a standard hose rack (select models).



**SAFETY
FIRST**

Coachmen's **SureLine™ Electrical Harness** provides color coded wiring and specific wiring schematics for easy serviceability. High quality electrical automotive connectors and autoloom protective covering make for a reliable and durable harness. The wires are grouped together and neatly tucked into the framework under the coach, safe from road debris.



**SAFETY
FIRST**

All Coachmen travel trailers utilize **Duratube™** full length copper LP lines with double flared ends to ensure a tight seal and years of corrosion free use. Coachmen builds quality for the long haul.



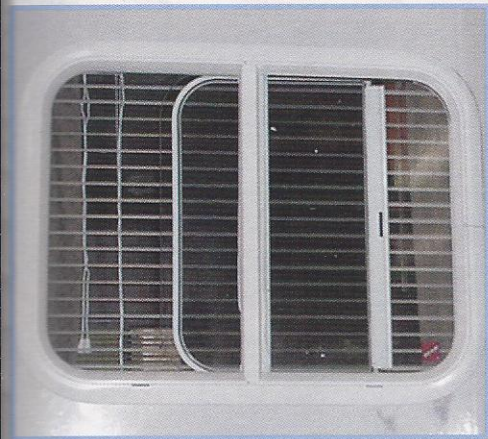
DURAtube™
By Coachmen

The Coachmen **Even Cool™** air conditioning system is ducted through the crowned roof and utilizes AMOCO insulated ductwork with radiused corners to provide for maximum cooling efficiency. (Most Models)



Even Cool™
By Coachmen

Functional windows in the ends of our sliderooms allow for increased air flow throughout the slideroom and the coach area.



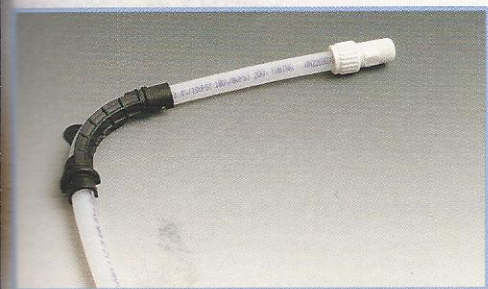
Jalousie bedroom windows tilt out design allows them to be opened for ventilation even when the weather outside is less than favorable. Just because the rain keeps you inside, doesn't mean that you can't enjoy fresh air outside.



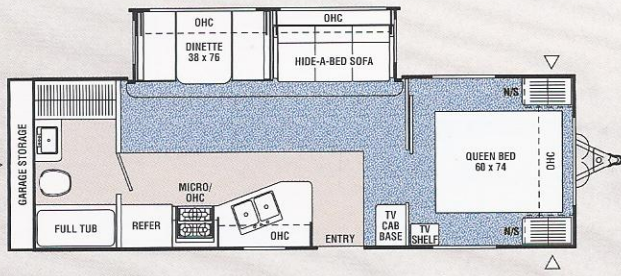
Skillfully designed sink and plumbing placement have allowed us to utilize the under sink space as a convenient silverware/utensil drawer that maximizes your interior storage space. (Select models)



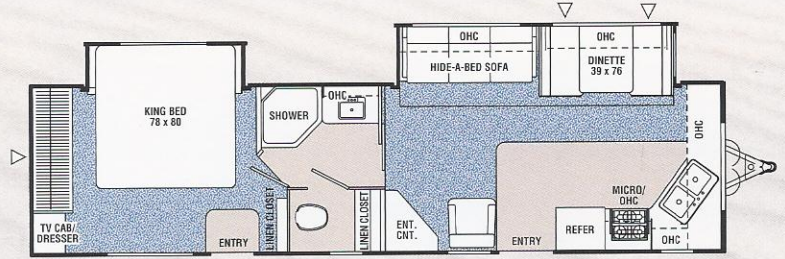
The **Flair-It™** compression fitting water line system uses radius bends to reduce the number of fittings used by over 50%. Where connectors are needed, a compression fitting ensures a long term, tight seal.



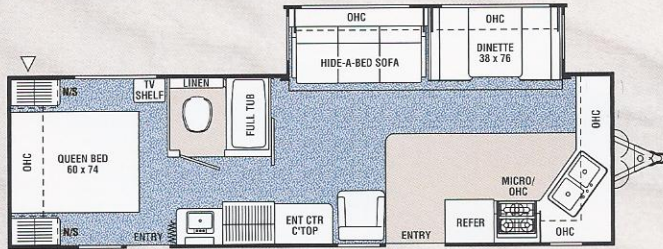
TRAVEL TRAILER FLOORPLANS & SPECIFICATIONS



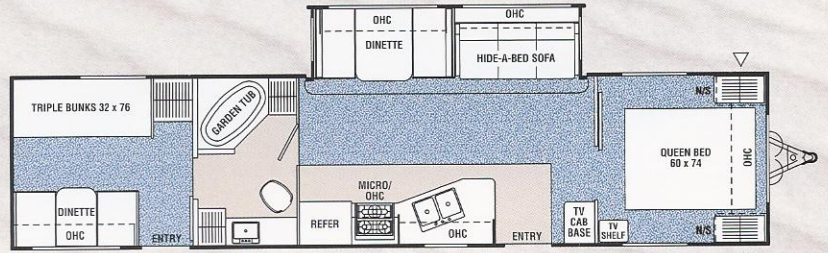
726RBS Available with option: A



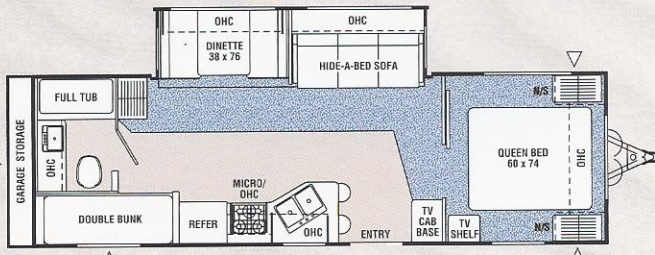
734FKS Available with option: A



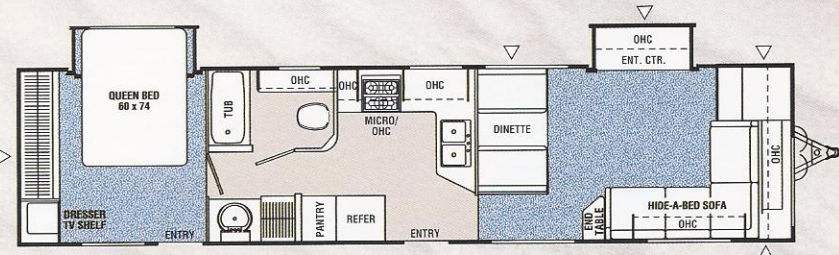
729FKCS Available with option: A



738TBS Available with options: A,B

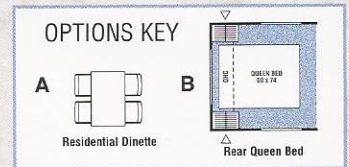


730TBS



739FLS Available with options: A

Carpeting Outside Storage Location



Catalina™ TT	726RBS	729FKCS	730TBS	734FKS	738TBS	739FLS
Base Weight (lbs.)	7,247	7,250†	7,500†	8,908	8,786	9,138
GVWR (lbs.)	8,960	9,000†	8,800†	11,100	11,100	11,150
Carrying Capacity (lbs.)	1,713	1,700†	1,300†	2,192	2,314	2,012
Hitch Weight (lbs.)	960	1,050†	800†	1,220	1,130	1,150
Axle Weight (lbs.)	6287	6,200†	6,700†	7,688	7,656	7,998
Interior Height	6'9"	6'9"	6'9"	6'9"	6'9"	6'9"
Exterior Height*	10'2"	10'2"	10'2"	10'3"	10'3"	10'3"
Exterior Length	30'7"	31'3"	32'1"	35'4"	38'3"	40'8"
Exterior Width	8'0"	8'0"	8'0"	8'0"	8'0"	8'0"
Hitch Pin Height	19"	19"	19"	19"	19"	19"
Sleeping Capacity	6/4	6/4	8/7	6/4	10/9/7	6
Fresh Water Capacity	42	42	42	42	42	42
Waste Water Capacity	37	40	40	40	37	40
Grey Water Capacity	37	42	40	40	37	42
Water Heater Capacity	6	6	6	6	6	6
LP Gas Capacity (lbs.)	60	60	60	60	60	60
"Furnace Rating (x1,000) BTU"	25	30	30	35	34	34
Tire Size	(1)	(1)	(1)	(2)	(2)	(2)
*Includes clearance for roof AC	† Estimated	Tire Size (1) ST225/75D15C	Tire Size (2) ST225/75D15D			

Base Weight: The weight of the unit with no fluids, cargo, optional equipment or accessories.

GVWR (Gross Vehicle Weight Rating): The maximum permissible weight of the unit, including the Base Weight plus all fluids, cargo, optional equipment and accessories. For safety and product performance, do not exceed the GVWR.

Carrying Capacity: The difference between the Base Weight and the GVWR. This is the amount of weight available for all fluids, cargo, optional equipment and accessories. The actual "loaded" weight will depend on the equipped unit and the owner's individual choice of cargo, etc.

Wider Widths: Numerous Coachmen floorplans feature the "wide body" design concept, which gives you significantly enhanced interior living space and innovative floorplans.

In making your purchase decision, you should be aware that a few states restrict access on some or all roads within the state to vehicles with a maximum 96" width, although special road usage permits may be available. Vehicles up to 102" in width are permitted in the vast majority of states. You should confirm the road usage laws in the states of interest to you before making your purchase decision. If width is of concern to you, we invite you to consider the broad array of other Coachmen models offered in the standard 96" width.

All information contained in this brochure is believed to be accurate at the time of publication. However, during the model year, it may be necessary to make revisions and Coachmen reserves the right to make all such changes without notice, including changes in prices, colors, materials, equipment and specifications, as well as the addition of new models and the discontinuance of models shown in this brochure. Therefore, please consult with your Coachmen dealer and confirm the existence of any materials, design or specifications that are material to your purchase decision.

TRAVEL TRAILER STANDARDS & OPTIONS

INTERIOR AND DÉCOR

- Ashland Oak Cabinetry
- Residential Metal Drawer Guides
- Partial Carpet w/ Pad (Living & Bedroom)
- Linoleum Flooring (Kitchen & Bath)
- Day/Night Shades (Coach)
- Wall Paper Border - Kitchen & Bedroom
- One Swivel Rocker (729FKCS, 734FKS)
- Main Slideroom Overheads
- Two Bar Stools (730TBS)
- Coat Rack
- LP Leak Alarm
- Fire Extinguisher
- Smoke Alarm
- Deluxe Sofa w/ Hide-A-Bed
- Magazine Rack
- Booth Dinette w/ Storage Access Door
- Hardwood Raised Panel Cabinet Doors
- Owner's Information Package

GALLEY

- 3-Burner (High Output) Range with Oven
- Power/Lighted Range Hood
- Double Door Refrigerator
- Monitor Panel
- Microwave Oven
- Large Composite Sink
- Sink Covers
- Water Purifier w/Dedicated Drinking Spout
- Knife Holder

SLEEPING

- Queen Bed (Except 734TBS)
- King bed (734FKS)
- Double Bunk w/Side Garage Storage (730 TBS)
- Triple Bunk Beds (738TBS)

- Deluxe Innerspring Mattress (QB) - 312 Coil
- Bedspread
- Bedlift System on Island QB
- Bedroom TV Shelf

ELECTRICAL/HEATING/AC

- 30-Amp Service
- Outside GFI Receptacle
- Patio Light
- LP Hitch Light
- Double 30 LB LP Bottles w/Auto Change-Over
- 25,000 BTU E.I. Furnace (726RBS)
- 30,000 BTU E.I. Furnace (729FKCS, 730TBS)
- 34,000 BTU E.I. Furnace (734FKS, 738TBS, 739FLS)
- In-Floor Ducted Heat
- 13,500 BTU Ducted Roof Air Conditioner
- TV Antenna and Rotor Package
- Cable TV Jack
- AM/FM Stereo w/ CD Player
- Phone Jack
- 3 Additional 12V Outlets

BATH AND WATER

- Marine Toilet
- Power Bath Vent
- One-Piece ABS Tub Surround
- Water Heater By-Pass Valve
- Demand Water Pump
- Decorative Bath Hardware
- 6-Gallon Gas/Electric E.I. Water Heater
- Outside Shower
- Skylight
- Shower Door
- Upgraded Medicine Cabinet
- Residential Style Lav Base

EXTERIOR/CONSTRUCTION

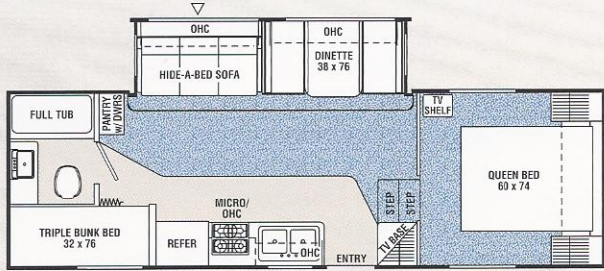
- Filon Fiberglass Sidewalls
- Rubber Roof
- Gutter Rail
- Rear Hose Storage Steel Bumper
- Triple Entry Steps
- Dead Bolt Lock(s)
- Secondary Entrance Door (729FKCS, 734 FKS, 738TBS, 739FLS)
- Electric Rack and Pinion Slide-Out Room
- Flush Floor Main Slide-Out Room
- Retractable Stabilizer Jacks
- EZ-Lube Straight Axles
- Clear Safety Glass Radius Windows
- Radius Entrance Door
- Radius Baggage Doors
- I-beam Chassis Construction
- Stow-N-Go™ Rear Garage Storage (726RBS, 730TBS)
- Patio Awning
- Slideout Room Awning - Bedroom (734 FKS)
- Slideout Room Awning - Coach
- Diamond Plate Front Stoneguard & Bumper Cover
- Front Window w/ Stoneguard Awning
- Spare Tire
- LP Bottle Cover
- Double Insulation (Floor & Ceiling)
- Roof Ladder (N/A 726RBS, 730TBS)
- Chrome Wheel Inserts
- Large Folding Grab Handle
- Slide Out Storage Tray



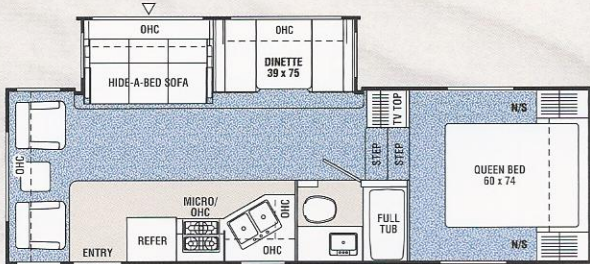
OPTIONAL FEATURES

- Triple Bunk (730TBS)
- Rear Queen Bed (738TBS)
- Double Bunk w/Dual Side Bunk Storage (738 TBS)
- Sliding Patio Door w/ Grab Handle (738TBS, 739FLS)
- Residential Dinette (Except 730TBS)
- Residential Refrigerator (738 TBS, 739 FLS)
- Grill-2-Go™ (726RBS, 730TBS)
- Tinted Safety Glass - Radius Windows
- 15,000 BTU Ducted Roof Air Conditioner
- CSA Upfit

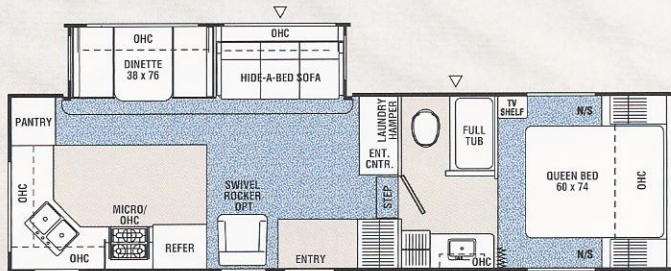
FIFTH WHEEL FLOORPLANS & SPECIFICATIONS



725TBS Available with option: A




726RLS Available with option: A



728RKS Available with option: A



 Carpeting

 Outside Storage Location

OPTIONS KEY



Catalina™ FW	725TBS	726RLS	728RKS
Base Weight (lbs.)	7,484	7,494	7,400†
GVWR (lbs.)	8,600	8,600	10,000†
Carrying Capacity (lbs.)	1,116	1,106	2,600†
Hitch Weight (lbs.)	1,510	1,390	1,600†
Axle Weight (lbs.)	5,974	6,106	5,800†
Interior Height (Bedroom)	5'4"	5'4"	6'0"
Exterior Height*	11'2"	11'2"	11'4"
Exterior Length	27'11"	27'4"	31'2"
Exterior Width	8'3"	8'3"	8'3"
Hitch Pin Height	45"	45"	45"
Sleeping Capacity	8/6	6	6
Fresh Water Capacity (gal.)	42	42	42
Waste Water Capacity (gal.)	37	37	32
Grey Water Capacity (gal.)	37	37	40
Water Heater Capacity (gal.)	6	6	6
LP Gas Capacity (lbs.)	60	60	60
Furnace Rating (x1,000) BTU	25	25	25
Tire Size	ST225/75D15C	ST225/75D15C	ST225/75R15D

*Includes clearance for roof AC † Estimated

Base Weight: The weight of the unit with no fluids, cargo, optional equipment or accessories.

GVWR (Gross Vehicle Weight Rating): The maximum permissible weight of the unit, including the Base Weight plus all fluids, cargo, optional equipment and accessories. For safety and product performance, do not exceed the GVWR.

Carrying Capacity: The difference between the Base Weight and the GVWR. This is the amount of weight available for all fluids, cargo, optional equipment and accessories. The actual "loaded" weight will depend on the equipped unit and the owner's individual choice of cargo, etc.

Wider Widths: Numerous Coachmen floorplans feature the "wide body" design concept, which gives you significantly enhanced interior living space and innovative floorplans.

In making your purchase decision, you should be aware that a few states restrict access on some or all roads within the state to vehicles with a maximum 96" width, although special road usage permits may be available. Vehicles up to 102" in width are permitted in the vast majority of states. You should confirm the road usage laws in the states of interest to you before making your purchase decision. If width is of concern to you, we invite you to consider the broad array of other Coachmen models offered in the standard 96" width.

All information contained in this brochure is believed to be accurate at the time of publication. However, during the model year, it may be necessary to make revisions and Coachmen reserves the right to make all such changes without notice, including changes in prices, colors, materials, equipment and specifications, as well as the addition of new models and the discontinuance of models shown in this brochure. Therefore, please consult with your Coachmen dealer and confirm the existence of any materials, design or specifications that are material to your purchase decision.

FIFTH WHEEL STANDARDS & OPTIONS

INTERIOR AND DÉCOR

- Ashland Oak Cabinetry
- Residential Metal Drawer Guides
- Partial Carpet w/ Pad (Living & Bedroom)
- Linoleum Flooring (Kitchen & Bath)
- Day/Night Shades (Coach)
- Wall Paper Border - Kitchen & Bedroom
- Two Swivel Rockers (726 RLS)
- Main Slideroom Overheads
- Coat Rack
- LP Leak Alarm
- Fire Extinguisher
- Smoke Alarm
- Deluxe Sofa w/ Hide-A-Bed
- Magazine Rack
- Booth Dinette w/ Storage Access Door
- Hardwood Raised Panel Cabinet Doors
- Owner's Information Package

GALLEY

- 3-Burner (High Output) Range with Oven
- Power/Lighted Range Hood
- Double Door Refrigerator
- Monitor Panel
- Microwave Oven
- Large Composite Sink
- Sink Covers
- Water Purifier w/Dedicated Drinking Spout
- Knife Holder

SLEEPING

- Queen Bed
- Triple Bunk Beds (725TBS)
- Deluxe Innerspring Mattress (QB) - 312 Coil
- Bedspread
- Bedlift System on Island QB
- Bedroom TV Shelf

ELECTRICAL/HEATING/AC

- 30-Amp Service (Except 728 RKS)
- 50-Amp Service (728 RKS)
- Outside GFI Receptacle
- Patio Light
- LP Hitch Light
- Double 30 LB LP Bottles w/Auto Change-Over
- 25,000 BTU E.I. Furnace (725TBS, 726RLS)
- 30,000 BTU E.I. Furnace (728 RKS)
- In-Floor Ducted Heat
- 13,500 BTU Ducted Roof Air Conditioner
- TV Antenna and Rotor Package
- Cable TV Jack
- AM/FM Stereo w/ CD Player
- Phone Jack
- 3 Additional 12V Outlets

BATH AND WATER

- Marine Toilet
- Power Bath Vent
- One-Piece ABS Tub Surround
- Water Heater By-Pass Valve
- Demand Water Pump

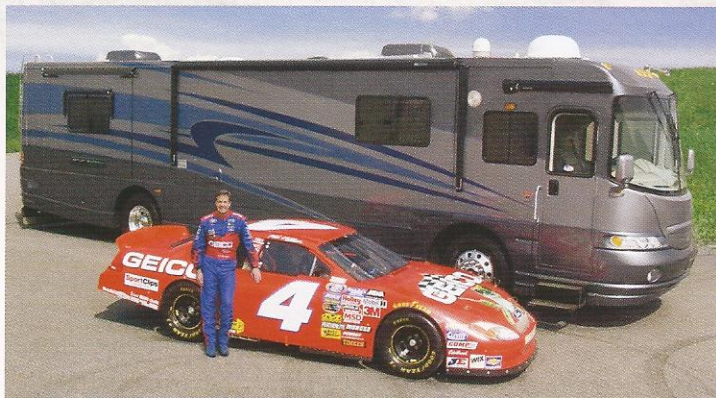
- Decorative Bath Hardware
- 6-Gallon Gas/Electric E.I. Water Heater
- Outside Shower
- Skylight
- Shower Door
- Upgraded Medicine Cabinet
- Residential Style Lav Base

EXTERIOR/CONSTRUCTION

- Filon Fiberglass Sidewalls
- Rubber Roof
- Gutter Rail
- Rear Hose Storage Steel Bumper
- Triple Entry Steps
- Dead Bolt Lock(s)
- Electric Rack and Pinion Slide-Out Room
- Flush Floor Main Slide-Out Room
- Retractable Stabilizer Jacks
- EZ-Lube Straight Axles
- Clear Safety Glass Radius Windows
- Radius Entrance Door
- Radius Baggage Doors
- I-beam Chassis Construction
- Patio Awning
- Slideout Room Awning - Coach
- Spare Tire
- Double Insulation (Floor & Ceiling)
- Roof Ladder
- Chrome Wheel Inserts
- Large Folding Grab Handle



LIFE IN THE FAST LANE



NASCAR driver Mike Wallace makes a Coachmen RV motorhome his home on the road. The middle brother of auto racing's famed Wallace family, Mike is a veteran of NASCAR's racing circuit.

OPTIONAL FEATURES

- Residential Dinette (Except 726RLS)
- Ceiling Fan (728RKS)
- Tinted Safety Glass - Radius Windows
- 15,000 BTU Ducted Roof Air Conditioner
- 2nd 13,500 BTU Air Conditioner (728RKS)
- Shock Absorbers
- Power Electric Jacks
- CSA Upfit

Discover the Coachmen Advantages

Service After the Sale

Industry Leading Buckstopper™ Warranty – Coachmen's exclusive Buckstopper™ Limited Warranty provides one-year coverage on most parts, components and appliances. Coachmen stands behind their product and is supported by a network of over 300 service centers.

Two Year Structural & Major Components Manufacturer's Warranty –

Coachmen provides a two-year structural and major components manufacturer's warranty, along with a complete written Warranty Summary Guide, for your peace of mind.



Comprehensive Owner's Information – For your convenience we offer published materials on key equipment and options, as well as information pertaining to the function of important components. We also offer a true **Trouble Shooting and Maintenance Guide** for the simple answers to frequently asked questions.

Toll Free Service Numbers – Our toll free phone numbers provide you with direct access to a Coachmen RV Service Representative.

Dealer Support Tools – Coachmen makes sure that their dealers are well equipped and trained to service your needs with: Systems Manuals, PDI Manuals, Electronic Parts Catalogs, Coach-Link® "On-Line" Electronic Dealer Communication System and continual service training.

Priority Parts Ordering – Coachmen provides a program for overnight parts shipment in critical repair situations.

Coachmen Caravan Camping Club™

Coachmen Caravan Camping Club is your ticket to making friends for life. Share old stories and make new, in the company of fellow Coachmen Caravan members. With the purchase of a Coachmen RV, you are invited to join the nation's largest manufacturer sponsored RV club with a **FREE 1st year basic membership or discounted Platinum membership**. As part of the Coachmen Caravan family, you will receive incredible membership benefits that will help to ensure your safety and enjoyment throughout your RV experiences. Enjoy your Coachmen RV more with the Coachmen Caravan Camping Club.



Leader to the Great Outdoors®

Coachmen RV Company is a proven leader in the RV Industry with 40 years of experience. We are dedicated to providing a high quality, reliable and innovative product, backed by high quality service support. Our mission is simple...to meet and exceed your expectations and to make your total RV experiences memorable and enjoyable!



*Coachmen RV Company... A Great Product,
A Great Company, A Great Name!
Coachmen RV Company... Leader to the
Great Outdoors*

Jerry's Trailers & Campers
2601 South 13th St.
Norfolk, NE 68701
(402) 371-1306



Coachmen Recreational Vehicle Company, LLC
P.O. Box 30, Middlebury, IN 46540
P.O. Box 948, Fitzgerald, GA 31750

Visit our website at: www.coachmenrv.com

©2004 Coachmen Recreational Vehicle Company, LLC -
All rights reserved. Litho in USA 7/04