

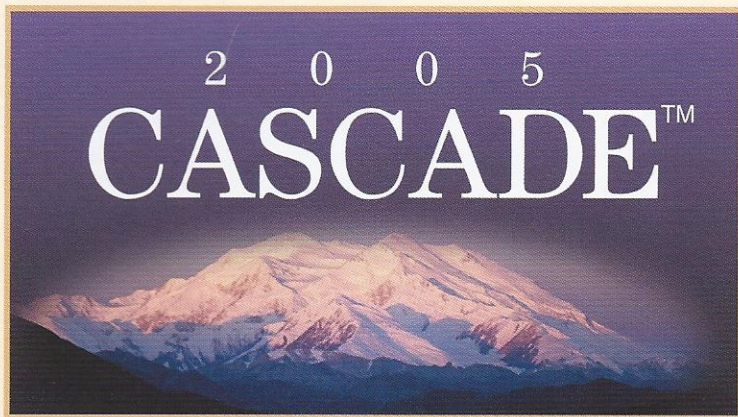
2 0 0 5

Cascade™

T R A V E L T R A I L E R S



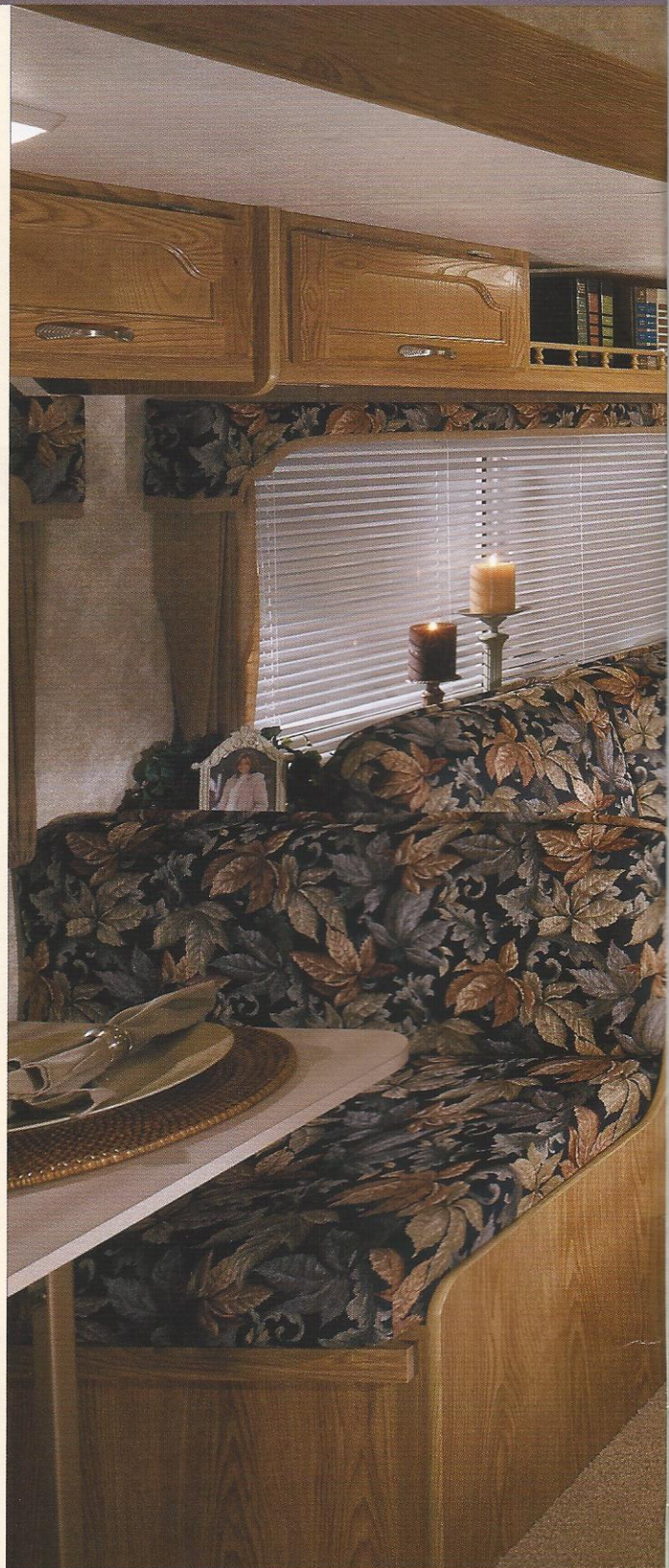
Leader *to* the Great Outdoors®



Cascade™ Travel Trailers by Coachmen RV have something for everyone. The Cascade™ blends together “old fashioned” quality and value. Whether you are a first time buyer or an experienced veteran you are sure to appreciate the spacious floorplans, solid construction and quality appointments that are built into each Cascade.™

Exceptional value doesn't mean sacrificing the finer things.

You'll be surrounded by deluxe appointments such as mortise and tenon cabinetry and plush residential style furnishings from the moment you step into the Cascade.™ Cascade's diverse floorplans, fabric selections and available option packages afford the opportunity to create a Cascade™ that is perfect for you.



Decor Selections

Dazzling interiors feature skillfully coordinated upholstery and window treatments. Coachmen RV chooses only top-grade fabrics wear-rated as heavy-duty. These fabrics have been tested for durability beyond 15,000 double rubs (in and out action) to simulate heavy usage. An average chair in an American home is subjected to only 3,000 double rubs per year.



The Cascade is well appointed with many upgraded and residential style features, such as designer box valences, slideroom overhead storage cabinets, high spout faucet, laminated and self edged countertops, mortise and tenon cabinet construction, flush floor slideroom and brushed nickel hardware throughout.



Spice Berry

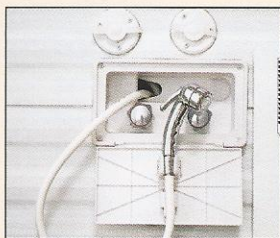


Woodland Indigo

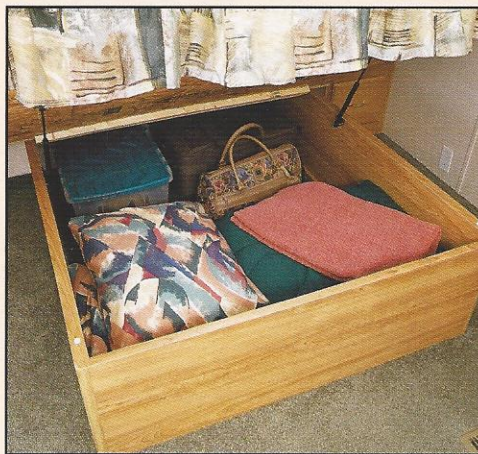
Fabric Key—
A. Main
B. Accent
C. Bedspread

2 0 0 5 CASCADE™

Step into the Cascade™ Travel Trailer and see the outstanding value and safety that is designed into every coach. It's sometimes the things you can't see, like our SureLine™ electrical harness or the Flair-It™ water lines that set us apart from the crowd, while other times it's the items that are easily visible. Take a minute to see just a few of the benefits that set us apart from the rest.



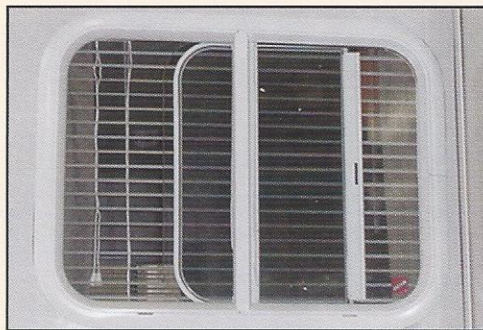
The deluxe outside shower option features an ergonomically designed sprayer and can be conveniently tucked away in its own storage bay. (Premier Package)



All island queen beds have a large storage bay underneath that is easily accessible with the help of two gas struts.



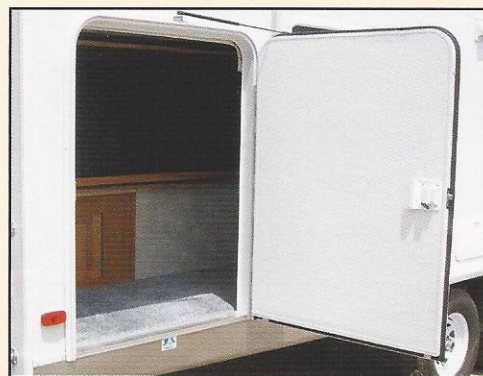
Standard metal drawer guides with glide wheels provide a friction-free sliding drawer that is extremely durable. The drawer guides also act as a catch so that the drawer will not slide open during travel. Simply lift up and pull to open the drawers.



Working slider windows are used on the slideroom ends to maximize airflow and circulation. Coachmen goes the extra mile for your comfort.



Slideroom overhead cabinets and shelves add valuable additional interior storage for your belongings.



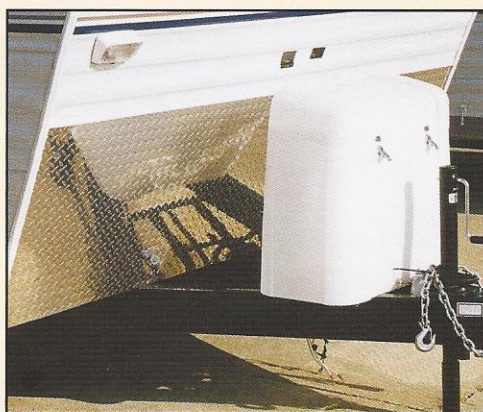
A large entrance style door provides access to an innovative bunk area storage. The lower bunk easily folds up and out of the way to create a large storage location for all your toys. (Option-Select Models)



The Flair-It™ water line system uses radius bends to reduce the number of fittings used by over 50%. Where connectors are needed, a compression fitting ensures a long term, tight seal.

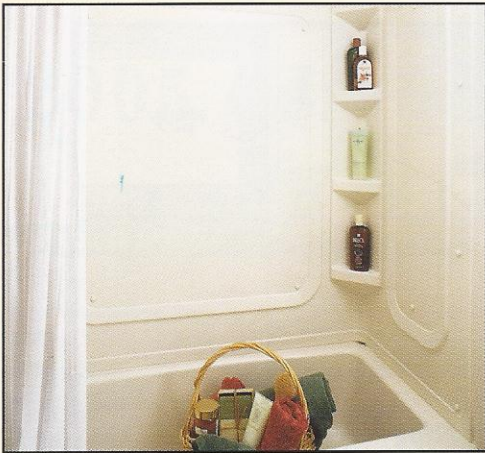


SAFETY FIRST *All Coachmen RV products come standard with an LP leak detector, fire extinguisher, and smoke detector for your safety.*

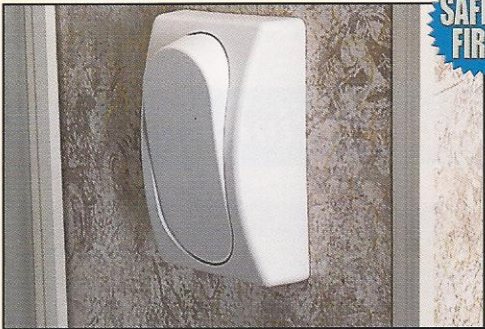


The optional diamond plate stone guard and rear bumper cover provide an attractive, durable layering that is extremely resistant to stone chips and other road debris that you may come across in your travels.

Features Galore



A one-piece ABS tub surround provides a protective wall barrier and is a seamless easy to clean surface with custom built in shelving for your shower supplies.



SAFETY FIRST

Don't fumble around late at night looking for a tiny light switch. The extra large toggle wall switches are conveniently located and can be flipped on/off with the palm of your hand.



Exterior storage has been utilized to its fullest with large locking storage doors. All baggage doors are radiused to eliminate snags and scratches as you walk by, and have a door catch that conveniently holds it open while you search for your gear.



The optional Grill-2-Go™ offers you the ultimate grilling machine. Lightweight, durable and extremely functional, this grill was designed to let you grill anytime and anywhere. (Select Models)

ASK YOUR DEALER ABOUT THESE COACHMEN EXCLUSIVE DESIGN FEATURES

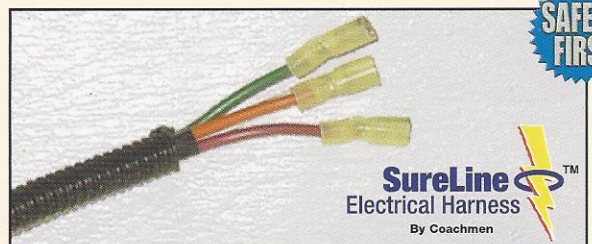


The enormous Stow-N-Go™ rear garage storage door easily opens with the assistance of 2 gas struts. Inside there are plenty of storage spaces with several shelves and a standard hose rack. (Standard on select models).



SAFETY FIRST

All Coachmen units utilize DURATUBE™ full length copper LP lines with double flared ends to ensure a tight seal and years of corrosion free use. We also run our copper lines, protected by a sleeve, through the frame, where they are protected from road damage.



SAFETY FIRST

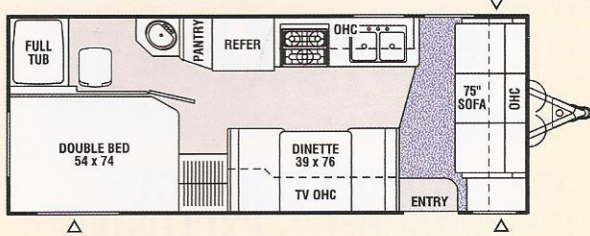
Coachmen's SureLine™ Electrical Harness provides color coded wiring and a specific wiring schematic for easy serviceability. High quality automotive electrical connectors and autoloom protective covering make for a reliable and durable harness. The wires are grouped together and neatly tucked into the framework under the coach, safe from road debris.

The Coachmen EVEN COOL™ air conditioning system is ducted through the crowned roof, and utilizes AMOCO insulated ductwork with radiused corners to provide for maximum cooling efficiency.

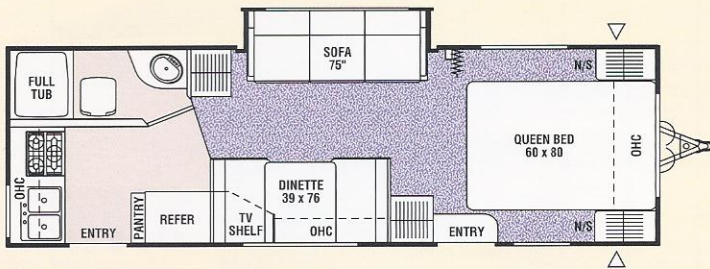


Even Cool
By Coachmen

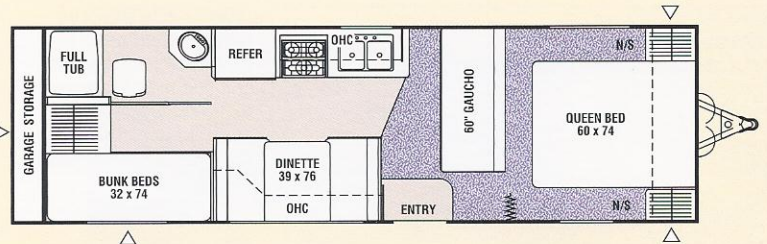
2005 Cascade Lite Floorplans



218FL



266RKS




270BH

 Indicates Carpeting

 Indicates Outside Storage Location

2005 Cascade Lite Travel Trailer Specifications

	218FL	266RKS	270BH
Base Weight	3,850†	4,774†	4,951†
GVWR	6,050†	7,670†	7,150†
Carrying Capacity	2,192†	2,896†	2,199†
Hitch Weight	610†	670†	750†
Axle Weight	3,248†	4,104†	4,201†
Interior Height	76"	76"	76"
Exterior Height*	9' 4"	9' 4"	9' 4"
Exterior Length	23' 2"	26' 8"	29' 10"
Exterior Width	7' 10"	7' 10"	7' 10"
Hitch Pin Height	17"	17"	17"
Sleeping Capacity	6	6	7
Fresh Water Capacity (gal.)	30	30	30
Waste Water Capacity (gal.)	32	32	32
Grey Water Capacity (gal.)	32	32	32
Water Heater Capacity (gal.)	6	6	6
LP Gas Capacity (lb.)	40/60	40/60	40/60
Furnace Rating (x 1,000)	25	25	25
Tire Size	ST175/80R13C	ST205/75R15B	ST205/75R15C

* Add 10" for Roof Air Conditioner † = Estimated  Add 3" for Straight Axle

Base Weight: The weight of the unit with no fluids, cargo, optional equipment or accessories.

GVWR (Gross Vehicle Weight Rating): The maximum permissible weight of the unit, including the Base Weight plus all fluids, cargo, optional equipment and accessories. For safety and product performance, do not exceed the GVWR.

Carrying Capacity: The difference between the Base Weight and the GVWR. This is the amount of weight available for all fluids, cargo, optional equipment and accessories. The actual "loaded" weight will depend on the equipped unit and the owner's individual choice of cargo, etc.

Wider Widths: Numerous Coachmen floorplans feature the "wide body" design concept, which gives you significantly enhanced interior living space and innovative floorplans.

In making your purchase decision, you should be aware that a few states restrict access on some or all roads within the state to vehicles with a maximum 96" width, although special road usage permits may be available. Vehicles up to 102" in width are permitted in the vast majority of states. You should

confirm the road usage laws in the states of interest to you before making your purchase decision. If width is of concern to you, we invite you to consider the broad array of other Coachmen models offered in the standard 96" width.

All information contained in this brochure is believed to be accurate at the time of publication. However, during the model year, it may be necessary to make revisions and Coachmen reserves the right to make all such changes without notice, including changes in prices, colors, materials, equipment and specifications, as well as the addition of new models and the discontinuance of models shown in this brochure. Therefore, please consult with your Coachmen dealer and confirm the existence of any materials, design or specifications that are material to your purchase decision.

2005 CASCADETM LITE

2005 Cascade Lite Standards & Options

Standard Features

INTERIOR AND DECOR

- Ashland Oak Cabinetry
- Linoleum Flooring
- Mini Blinds – Coach
- Mini Blinds – Bedroom (N/A w/Bunk Beds)
- Safty Glass Radius Windows
- Jack Knife Sofa (266RKS)
- Gaucho (270BH)
- Booth Dinette
- TV Antenna Ready
- LP Leak Alarm
- Techwood Drawers
- Fire Extinguisher
- Smoke Alarm

GALLEY

- Microwave Ready
- 3-Burner (High Output) Range w/ Oven
- Power Range Hood
- Stainless Steel Sink
- Large Single Door Refrigerator
- Monitor Panel

SLEEPING

- Queen Bed (266RKS, 270BH)
- Bunk Beds (270BH)
- Deluxe Innerspring Mattress – 312 Coil
- Bedspreads

BATH AND WATER

- Marine Toilet
- Power Bath Vent
- 6-Gallon Gas Water Heater
- Water Heater By-Pass Valve
- Demand Water Pump
- Decorative Bath Hardware
- Medicine Cabinet

ELECTRICAL/HEATING/AIR CONDITIONING

- GFI Circuit
- Outside Receptacle GFI
- Patio Light
- LP Hitch Light
- Double 20 LB LP Bottles w/Auto Change-Over
- 25,000 BTU E.I. Furnace

EXTERIOR/CONSTRUCTION

- White Framed Windows
- Fiberglass Insulation
- Gutter Rail w/Awning Rail
- Single Entry Step
- Dead Bolt Lock
- Radial Tires
- Rally Wheels
- Pass Through Storage
- One-Piece Polyethylene Wheel Wells
- Break Away Switch
- Retractable Stabilizer Jacks (Std. on Slide Out Units)
- Manual Crank Out Slide Mechanism (266RKS)
- Fender Skirts
- Rubber Roof
- Straight Axle w/ 15" Wheels & Double Entry Step (Opt. 218FL)

Select from the **Optional Equipment** listed below to build your Cascade Lite Travel Trailer your way.

Deluxe Package Includes:

- DLX Decal
- Partial Carpet w/Pad - Living & Bedroom
- TV Antenna and Rotor Package
- Patio Awning
- Cable TV Jack
- 13,500 BTU Ducted Air Conditioning (Non-Ducted 218FL)
- 12V AM/FM CD Stereo
- Double Door Refrigerator
- Microwave Oven
- 6-Gallon Gas/Electric E.I. Water Heater
- Owner's Information Package

Premier Package Includes:

- Deluxe Package Items Plus:
- Premier Decal

- One-Piece ABS Tub Surround
- Outside Shower
- Skylight - 14"
- Diamond Plate Stone Guard & Bumper Cover
- Front Window w/Stone Guard Awning
- Double 30# LP Bottles w/Auto Changeover
- LP Bottle Cover
- Spare Tire Kit

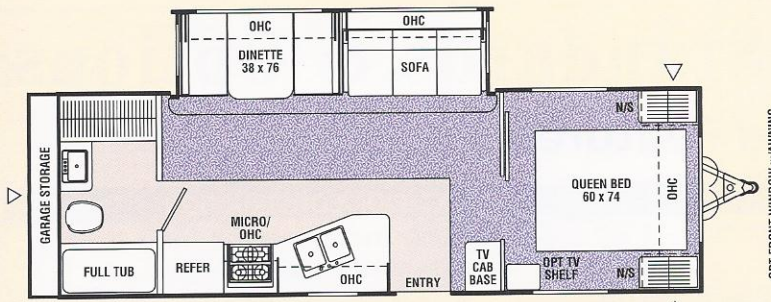
Additional Options

- Convenience Package (Rechargeable Flashlight, and Hand Held Wet/Dry Vacuum)
- Double Bed Down w/Bunk Up (218 FL, 270BH)
- Jack Knife Sofa (270BH)
- Grill-2-Go™ (270BH)
- Tinted Safety Glass - Radius Windows
- Electric Slide - Out Mechanism (266 RKS)

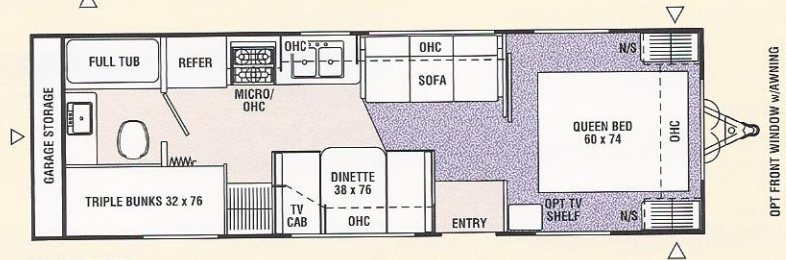
- Roof Ladder (218 FL, 266 RKS)
- Retractable Stabilizer Jacks (Std. 266RKS)
- Straight Axle w/15" Wheels & Double Entry Step (218FL)
- Pacific Edition Package (Consists of Three Additional 12V Outlets, Battery Rack for Three Group 27 Batteries, Increased Fresh Water Capacity, Additional Insulation, and Pacific Edition Decal)
- Filon Fiberglass Sidewalls
- CSA Upfit



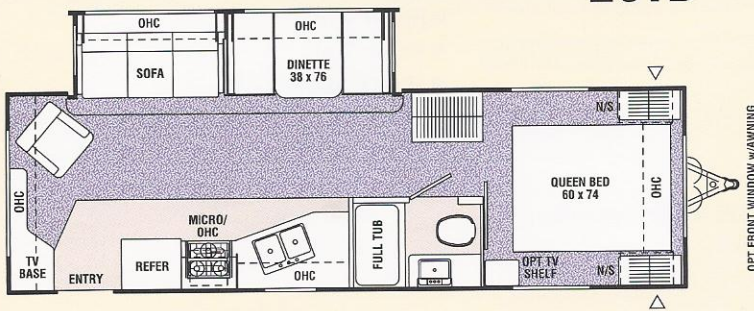
2005 CASCADE™



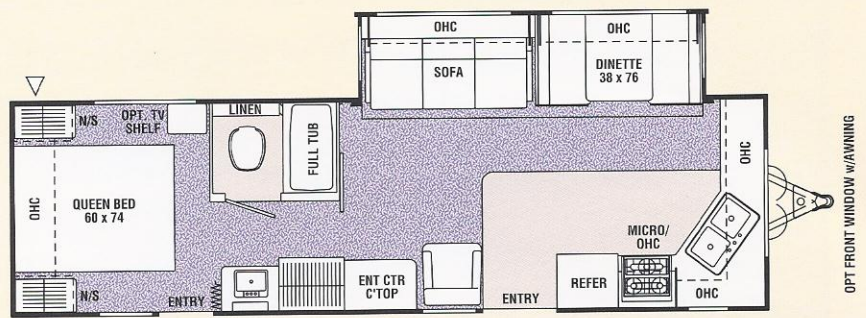
26RBS



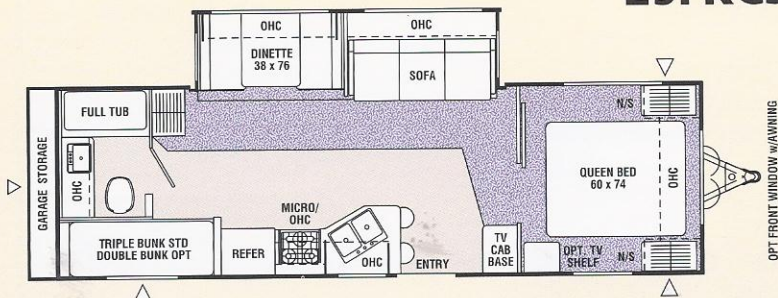
26TB



27RLS



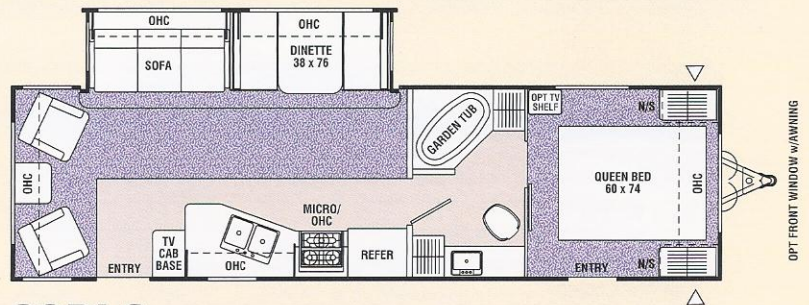
29FKCS



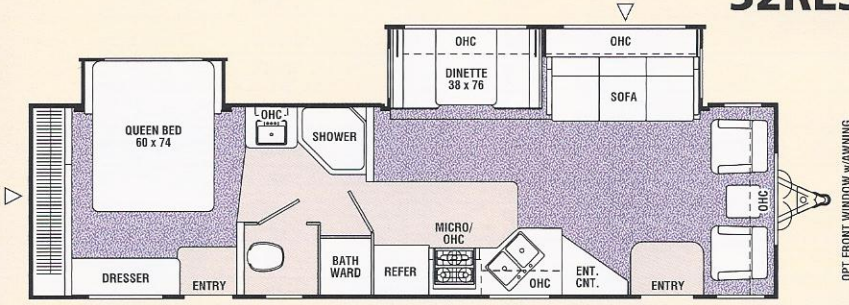
30TBS



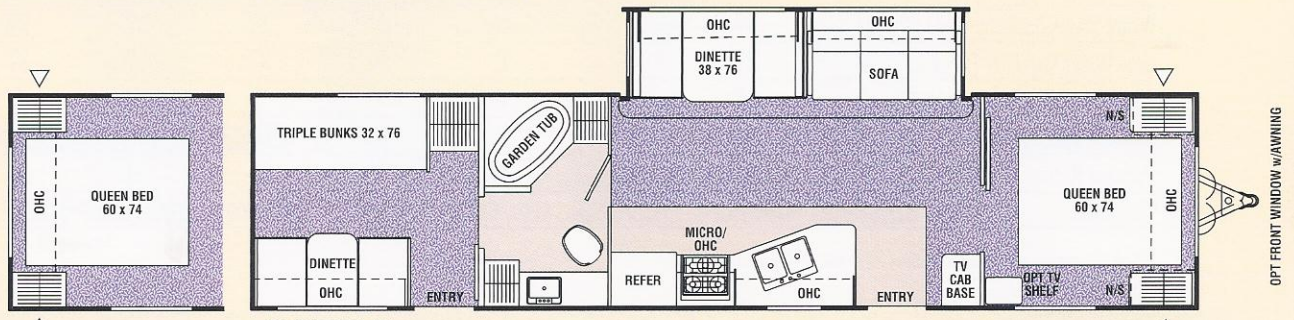
2005 Cascade Travel Trailer Floorplans



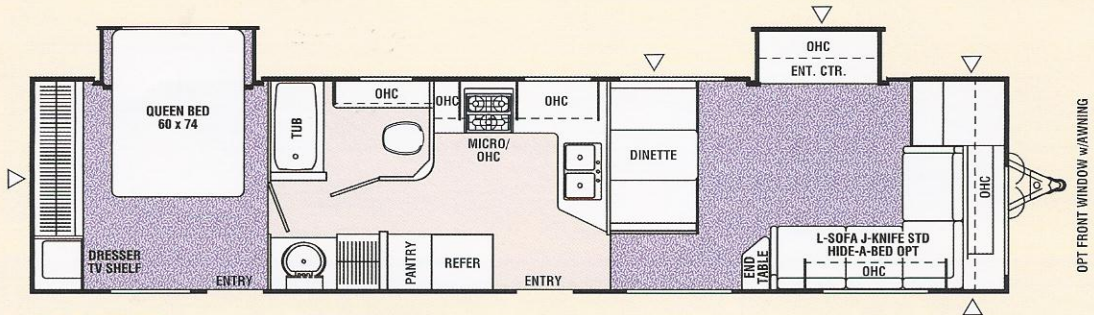
32RLS



33FLS



38TBS



39FLS



Life in the fast lane.
 NASCAR driver Mike Wallace makes a Coachmen RV motorhome his home on the road. The middle brother of auto racing's famed Wallace family, Mike is a veteran of NASCAR's racing circuit.

2005 CASCADE

2005 Cascade Travel Trailer Specifications

	26RBS	26TB	27RLS	29FKCS	30TBS	32RLS	33FLS	38TBS	39FLS
Base Weight	6,275	5,297	6,196	6,728	6,759	6,727	7,308	7,056	8,020
GVWR	8,850	7,600	8,780	8,990	8,880	8,900	11,120	11,100	10,950
Carrying Capacity	2,575	2,353	2,584	2,262	2,121	2,173	3,812	4,044	2,930
Hitch Weight	850	620	780	990	880	1,900	1,120	1,100	950
Axle Weight	5,425	4,647	5,416	5,738	5,879	5,827	6,188	5,956	7,070
Interior Height	6' 9"	6' 9"	6' 9"	6' 9"	6' 9"	6' 9"	6' 9"	6' 9"	6' 9"
Exterior Height*	10' 2"	9' 9"△	10' 2"	10' 2"	10' 2"	10' 2"	10' 2"	10' 3"	10' 3"
Exterior Length	30' 7"	30' 8"	29' 7"	31' 3"	32' 1"	32' 3"	34'	38' 3"	40' 3"
Exterior Width	8'	8'	8'	8'	8'	8'	8'	8'	8'
Hitch Pin Height	19"	16"/19"	19"	19"	19"	19"	19"	19"	19"
Sleeping Capacity	6	8	6	6	8	6	6	10	6
Fresh Water Capacity (gal.)	42	42	42	42	42	42	42	42	42
Waste Water Capacity (gal.)	37	37	37	40	40	37	37	37	40
Grey Water Capacity (gal.)	37	37	37	42	40	37	37	37	42
Water Heater Capacity (gal.)	6	6/5	6	6	6/5	6	6	6	6
LP Gas Capacity (lb.)	60	60	60	60	60	60	60	60	60
Furnace Rating (x 1,000)	25	25	30	30	30	34	34	34	34
Tire Size	ST225/75D15C	ST205/75D15C	ST225/75D15C	ST225/75D15C	ST225/75D15C	ST225/75D15C	ST225/75D15D	ST225/75D15D	ST225/75D15D

* Add 10" for Roof Air Conditioner △ Add 3" for Straight Axle

Base Weight: The weight of the unit with no fluids, cargo, optional equipment or accessories.

GVWR (Gross Vehicle Weight Rating): The maximum permissible weight of the unit, including the Base Weight plus all fluids, cargo, optional equipment and accessories. For safety and product performance, do not exceed the GVWR.

Carrying Capacity: The difference between the Base Weight and the GVWR. This is the amount of weight available for all fluids, cargo, optional equipment and accessories. The actual "loaded" weight will depend on the equipped unit and the owner's individual choice of cargo, etc.

Wider Widths: Numerous Coachmen floorplans feature the "wide body" design concept, which gives you significantly enhanced interior living space and innovative floorplans.

In making your purchase decision, you should be aware that a few states restrict access on some or all roads within the state to vehicles with a maximum 96" width, although special road usage permits may be available. Vehicles up to 102" in width are permitted in the vast majority of states. You should

confirm the road usage laws in the states of interest to you before making your purchase decision. If width is of concern to you, we invite you to consider the broad array of other Coachmen models offered in the standard 96" width.

All information contained in this brochure is believed to be accurate at the time of publication. However, during the model year, it may be necessary to make revisions and Coachmen reserves the right to make all such changes without notice, including changes in prices, colors, materials, equipment and specifications, as well as the addition of new models and the discontinuance of models shown in this brochure. Therefore, please consult with your Coachmen dealer and confirm the existence of any materials, design or specifications that are material to your purchase decision.



Quality By Design

Coachmen RV is committed to providing a high quality, reliable, and innovative product. We know that quality extends far beyond the "glitz" of a recreational vehicle and often, the most important aspects of quality are hidden in the design and construction of the coach. That's why Coachmen designs quality into our products up-front, through computer aided design and analysis software. This helps to assure appropriate weight distributions, structural integrity, alignment of the various parts and components and overall reliability of the design.

Our attention to quality does not stop on the computer screen, as all of our major product designs undergo rigorous road tests, rain booth testing, complete compliance audits for all codes, standards and safety related items, and comprehensive product audits.

Coachmen designs, builds and markets a superior product, for reasons that may not always be easy to see, however are very easy to appreciate down the road. Our hidden quality equates to high value, which can be critical to your long-term satisfaction.

2005 Cascade Standards & Options

Standard Features

INTERIOR AND DECOR

- Ashland Oak Cabinetry
- Hardwood Mortise & Tenon Cabinet Doors
- Linoleum Flooring - Kitchen & Bath
- Partial Carpet with Pad
- Mini Blinds - Coach
- Mini Blinds - Bedroom (Except w/Bunks)
- Designer Box Valences in Coach Area
- Residential Metal Drawer Glides
- Slideroom Overhead Cabinets (Slide Models- Except 39FLS)
- Booth Dinette
- Jack Knife Sofa (NA 39FLS)
- L-Sofa w/Jack Knife (39FLS)
- One Bar Stool (39FLS)
- Two Bar Stools (30TBS)
- One Swivel Rocker (27RLS, 29FKCS)
- Two Swivel Rockers (32RLS, 33FLS)
- Coat Rack
- Soap Dish
- Knife Holder
- Fire Extinguisher
- Smoke Alarm
- LP Leak Alarm

GALLEY

- 3-Burner (High Output) Range with Oven
- Power/Lighted Range Hood

- Double Door Refrigerator
- Monitor Panel
- Double Bowl Stainless Steel Sink

SLEEPING

- Queen Bed
- Queen Bed Slideout (33FLS, 39FLS)
- Triple Bunks (26TB, 30TBS, 38TBS)
- Deluxe Innerspring Mattress (QB) - 312 Coil
- Bedspread
- Bedlift System on Island QB

BATH AND WATER

- Marine Toilet
- Power Bath Vent
- 6-Gallon Water Heater
- Water Heater By-Pass Valve
- Demand Water Pump
- Decorative Bath Hardware
- Medicine Cabinet
- One-Piece ABS Tub Surround

ELECTRICAL/HEATING/AIR CONDITIONING

- 30-Amp. Service
- Outside Receptacle GFI
- Patio Light
- LP Hitch Light
- Double 30 LB LP Bottles w/Auto Change-Over

- 25,000 BTU E.I. Furnace (26TB, 26RBS)
- 30,000 BTU E.I. Furnace (27RLS, 29FKCS, 30TBS)
- 34,000 BTU E.I. Furnace (32RLS, 33FLS, 38TBS, 39FLS)
- In-Floor Ducted Heat

EXTERIOR/CONSTRUCTION

- Safety Glass Radius Windows
- Rear Hose Storage Steel Bumper
- Electric Flush Floor, Slide Room (Slide Models)
- Retractable Stabilizer Jacks (Slide Models)
- Rubber Roof
- Fiberglass Insulation
- Gutter Rail
- Single Entry Step (Non-Slide Models)
- Triple Entry Steps (Slide Models)
- Secondary Entrance Door (29FKCS, 32RLS, 33FLS, 38TBS, 39FLS)
- Dead Bolt Lock(s)
- Straight Axles (Slide Models)
- I-Beam Chassis Construction
- Radius Entrance Doors
- Radius Baggage Door
- Stow-N-Go™ Rear Garage Storage (26TB, 26RBS, 30TBS)
- Front Window w/StoneGuard Awning (Std. 39FLS)

Select from the **Optional Equipment** listed below to build your Cascade Travel Trailer your way.

Deluxe Package Includes:

- DLX Decal
- 13,500 BTU Ducted Roof Air Conditioner
- Patio Awning
- 6-Gallon Gas/Electric E.I. Water Heater
- TV Antenna and Rotor Package
- Cable TV Jack
- Microwave Oven
- AM/FM Stereo w/ CD Player
- Bedroom TV Shelf (Std. 33FLS, 39FLS)
- Phone Jack
- Owner's Information Package

Premier Package Includes:

- Deluxe Package Items Plus:
- Premier Decal
- Diamond Plate Front Stoneguard & Bumper Cover
- Deluxe Sofa w/Hide-A-Bed (Slide Models)
- Deluxe L-Sofa w/Hide-A-Bed (39FLS)
- Front Window w/ Stoneguard Awning (Standard on 39FLS)
- Outside Shower
- Spare Tire Kit
- LP Bottle Cover
- Double Insulation (Floor and Ceiling)
- 3 Additional 12V Outlets
- Slideout Room Awning- Bedroom (33FLS, 39FLS)
- Slideout Room Awning- Coach (Slide Models)

Additional Options

- Sliding Patio Door w/Grab Handle (32RLS, 38TBS, 39FLS)
- Grill-2-Go (26TB, 26RBS, 30TBS)
- Straight Axles (Non-Slide Models)
- Filon Fiberglass Sidewalls
- Roof Ladder (Except 26TB, 26RBS, 30TBS)
- Spare Tire Kit
- Diamond Plate Stoneguard
- Tinted Safety Glass Windows
- Rear Queen Bed (38TBS)
- Double Bunk w/Side Bunk Storage (26TB, 30TBS)
- Quad Bunk w/Dual Side Bunk Storage (38TBS)
- Residential Refrigerator (38TBS, 39FLS)
- 15,000 BTU Ducted Roof Air Conditioner (Upgrade)
- CSA Upfit (Mandatory For All Canadian Provinces)



Discover the Coachmen Advantages

Service After the Sale

Industry Leading Buckstopper™ Warranty – Coachmen's exclusive Buckstopper™ Limited Warranty provides one-year coverage on most parts, components and appliances. Coachmen stands behind their product and is supported by a network of over 300 service centers.

Two Year Structural & Major Components Manufacturer's Warranty – Coachmen provides a two-year structural and major components manufacturer's warranty, along with a complete written Warranty Summary Guide, for your peace of mind.

Comprehensive Owner's Information – For your convenience we offer published materials on key equipment and options, as well as information pertaining to the function of important components. We also offer a true **Trouble Shooting & Maintenance Guide** for the simple answers to frequently asked questions.



Toll Free Service Numbers – Our toll free phone numbers provide you with direct access to a Coachmen RV Service Representative.

Dealer Support Tools – Coachmen makes sure that their dealers are well equipped and trained to service your needs with: Systems Manuals, PDI Manuals, Electronic Parts Catalogs, Coach-Link® "On-Line" Electronic Dealer Communication System, and continual service training.

Service Support Center Web Site – Coachmen provides you access to key information 24-hours a day through the Internet. On-line you can find a Service Dealer Locator, Maintenance Information, Trouble Shooting Information, Product Warranty Information, Customer "E-Assistance", Frequently Asked Questions (FAQ's), and Publications ordering dating back to 1972 models.

Priority Parts Ordering – Coachmen provides a program for overnight parts shipment in critical repair situations.



Coachmen Caravan Camping Club™

Coachmen Caravan Camping Club™ is your ticket to making friends for life. Share old stories and make new, in the company of fellow Coachmen Caravan members. With the purchase of a Coachmen RV, you are invited to join the nation's largest manufacturer sponsored RV club with a **FREE 1st year basic membership or discounted Platinum membership**. As part of the Coachmen Caravan family, you will receive incredible membership benefits that will help to ensure your safety and enjoyment throughout your RV experiences. Enjoy your Coachmen RV more with the Coachmen Caravan Camping Club.

Leader to the Great Outdoors®

Coachmen RV Company is a proven leader in the RV Industry with 40 years of experience. We are dedicated to providing a high quality, reliable, and innovative product backed by high quality service support. Our mission is simple ... to meet and exceed your expectations and to make your total RV experiences memorable and enjoyable!



**Coachmen RV Company ... A Great Product,
A Great Company, A Great Name!
Coachmen RV Company ... Leader to the
Great Outdoors®**

JERRY'S TRAILERS & CAMPERS
2601 S. 13th St.
Norfolk, NE 68701
(402) 371-1306



Visit our website at: www.coachmenrv.com

Coachmen Recreational Vehicle Company, LLC
P.O. Box 30, Middlebury, IN 46540 • P.O. Box 948, Fitzgerald, GA 31750

