

SPRINTER

by Keystone

TRAVEL TRAILERS AND FIFTH WHEELS

2004



You don't have to settle...



GREETINGS,

By utilizing our customer's wants, needs and desires as the foundation of our design, Sprinter has quickly become one of the top selling brands in America.

Customers have returned time and time again to Sprinter, because of Sprinter's higher value, innovative floorplans, and an array of features and amenities that were previously offered exclusively in high-line products.

Simply put, Sprinter offers more value for your dollar than any other brand in the recreational vehicle industry. As styles change and technology advances, we work to continuously make Sprinter the most comfortable and convenient RV on the road. We invite you to join the tens of thousands of satisfied Sprinter owners.

See you in the Great Outdoors,

Group V.P.,
General Manager



Above, Sprinter's 299 RLS floor plan in the popular Cranberry color scheme shows its comfortable, extra-large slideout room. For 2004, all Sprinter interiors feature "Satin Nickel," silver-colored door handles, hinges, and trim on lighting fixtures and clock. Notice the hardwood raised panel, cathedral-style overhead cabinets, the soft lines of the residential quality upholstery, the designer window treatments, and the attention to detail in the entertainment center cabinetry. Another feature of all Sprinter slideouts—both 12-volt and 110-volt lighting—allows you to camp wherever you want to go, and not be left in the dark.



The 292 Sprinter fifth wheel interior has been redesigned for 2004, shown here in beautiful Coastal Mist, accented with silvery Satin Nickel door handles with matching Satin Nickel trims on lighting fixtures and the wall clock. With this floor plan, you'll relax in swivel rockers while you gaze through the panoramic rear window to enjoy unobstructed, breathtaking views of your travels. The warm, rich, oak-finished cabinetry includes overheads at the rear and in the double slideout area, an example of how the easy-access storage (throughout your Sprinter) provides convenience while permitting an uncluttered, spacious environment. The look of today is further enhanced by upgraded carpeting and floor covering for 2004.

Specifications



Apliances/Equipment

- Dometic Flush Mount Refrig.
- 3 Burner Range Top
- Microwave Ready
- Power Range Hood w/Light
- Six Gallon Water Heater DSI
- Furnace 30,000 BTU
- Air Conditioner Ready
- Water Heater Bypass Kit
- Demand Water Pump
- Laminated Galley Top w/Double Stainless Sink and Euro Style Faucet
- Copper LP Gas Lines
- P.E.X. Water Lines
- Monitor Panel

Bath

- ABS Tub
- Shower Curtain w/Valance
- Thetford Toilet
- Medicine Cabinet w/Mirror
- Towel Bar, Toothbrush Holder and Tissue Holder
- Power Roof Vent
- Light w/Wall Switch

Electrical

- Patio Light w/Amber Lens
- Ceiling Lights w/Wall Switches
- 120 Volt GFI Protected Circuits
- 120 Volt Fuse Panel
- Outside 120 Volt Recept
- 30 Amp, 28' Power Cord (Detachable)
- 55 Amp, Whisper Quiet Converter w/Charger
- Battery Box w/Positive Ventilation
- Pre-Wired for Air Conditioner
- Pre-Wired for Microwave

Exterior

- 2 Year Structural Warranty*
- Rubber Roof w/12 Year Warranty*
- Fiberglass Skin w/2 Year Warranty*
- Powder Coated Steel Chassis
- Tinted Jalousie Windows
- Aerodynamic Front Profile
- Flush Mount Front Window/Awning
- 26" Entry Door(s) w/Radius Corners, Window, Screen Door, and Flush Mount Latch
- Locking Baggage Doors
- Self-Storing Step(s) (Powder Coated)
- Laminated Large Front Storage Compartment
- Enclosed 30# LP Tanks
- 2-5/16" Coupler
- Break-away Switch
- Enclosed, Heated Underbelly
- Sewer Hose Compartment (Behind License Plate Bracket)

Interior

- Panoramic Galley Window
- Reversible Dinette Cushions
- Valance, Tiebacks, Sheers, Designer Drapes
- Mini Blind at Galley
- No-wax Vinyl Flooring
- "Euro Look" Overhead Cabinets w/Under Cabinet Shelves
- Maple Mortise and Tenon Cabinet Doors w/Struts
- Hidden Plumbing and Wiring
- High Pressure, Laminated Countertops
- Bedspread (w/Double or Queen Bed) Quilted Pillow Top
- Light/Air Roof Vent(s)
- Fire Extinguisher, Smoke Detector, LP Detector

Running Gear

- 14" Radial Trailer Tires
- White Spoke Wheels w/10" Electric Brakes
- Independent Torsion E-Z Lube Hubs Suspension System, Rubber Ride
- Seamless "Roto-Cast" Wheel Wells
- Welded, Box Channel, Tubular Steel Frame

Super Lite Weight

- Enclosed Chassis/Undercarriage
- Aerodynamic Front Profile
- Laminated Aluminum Frame Construction
- Thick Wall Construction (2")
- Fiberglass Exterior Skin
- LAMINATED Enclosed LP Bottle Area
- Extra Low Center of Gravity
- Works in the Basement
- Rubber Roof
- Box Channel, Steel Chassis
- TINTED Jalousie Windows
- Ducted Air Conditioning (24' and larger)

General Warranty Information*

| | |
|------------------------------|----------|
| • Rubber Roof | 12 Years |
| • Fiberglass Skin | 2 Years |
| • Clean Bond Painted Chassis | 1 Year |
| • Structure | 2 Years |
| • Dometic Appliances | 3 Years |
| • Atwood Appliances | 2 Years |
| • Liftco Slideout Mechanism | 5 Years |
| • Suspension System | 5 Years |
| • General Camper Coverage | 1 Year |

*Refer to specific written warranty statement

Towing Guide

Listed below are tow ratings that are the highest available for the respective 2002 models. Certain optional equipment may be required and other restrictions may apply. Check with your automotive dealer for exact specifications.

| VEHICLE | MAX ENGINE | TOW LIMIT (LBS.) | | | | | | | |
|----------------------------|--------------|------------------|-------------------------|--------------|------|----------------------------|---------|------|----------------------------------|
| Acura | | | Dakota (4WD) Club Cab. | 4.7 V-8 | 6150 | Land Rover | | | |
| MDX | 3.5 V-6 | 4500 | Durango (4WD) | 4.7 V-8 | 5700 | Discovery | All | 5500 | Subaru |
| RL | 3.5 V-6 | 2000 | Durango (4WD) | 5.9 V-8 | 7300 | Range Rover | All | 6500 | Legacy/Outback/Forester |
| AM General | | | Ram (2WD) 1500 All Cab. | 4.7 V-8 | 7400 | Lexus | | | 2.5 SOHC I-4 |
| Hummer (2-passenger) | Diesel | 8510 | Ram (2WD) 1500 All Cab. | 5.9 V-8 | 8350 | RX300 | 3.0 V-6 | 3500 | 2000 |
| Hummer (2-passenger) | Turbodiesel | 8440 | Ram Wagon B1500 | 3.9 V-6 | 4050 | LX470 | 4.7 V-8 | 6500 | Toyota |
| Buick | | | Ram Wagon B2500 | 5.2 V-8 | 7700 | Lincoln | | | 4 Runner |
| Rendezvous | 3.4 V-6 | 3500 | Ford | | | Blackwood | 5.4 V-8 | 8700 | Land Cruiser |
| BMW | | | Econoline Van | 4.2 V-6 | 5000 | Navigator | 5.4 V-8 | 8800 | Sienna |
| X5 | 4.6 V-8 | 6000 | Econoline Van | 4.6 V-8 | 6400 | Mazda | | | Tacoma |
| X5 | 3.0 I-6 | 6000 | Econoline Van | 5.4 V-8 | 6800 | B3000 | 3.0 V-6 | 4000 | Tundra |
| Cadillac | | | Expedition (4WD) | 4.6 V-8 | 6000 | B3000 (4WD) | 3.0 V-6 | 4360 | |
| Escalade AWD | 6.0 V-8 | 8200 | Expedition (2WD) | 5.4 V-8 | 8200 | B4000 | 4.0 V-6 | 5900 | |
| Chevrolet/GMC | | | Expedition (4WD) | 5.4 V-8 | 7900 | B4000 (4WD) | 4.0 V-6 | 5700 | |
| Astro/Safari (AWD) | 4.3 V-6 | 5100 | Explorer (2WD) | 4.0 V-6 | 5940 | Tribute | 3.0 V-6 | 3500 | |
| Astro/Safari (RWD) | 4.3 V-6 | 5800 | Explorer (4WD) | 4.0 V-6 | 5500 | Mercedes-Benz | | | |
| Blazer/Jimmy (2WD) | 4.3 V-6 | 5500 | F-150 Reg. Cab. (2WD) | 4.2 V-6 | 6500 | G-500 | 5.0 V-8 | 7000 | OPTIONS |
| Express/Savana/G1500 | 4.3 V-6 | 5200 | F-150 Reg. Cab. (2WD) | 4.6 V-8 | 6500 | ML 320 | 3.2 V-6 | 5000 | Air Conditioning, 13,000 BTU |
| Express/Savana/G1500 | 5.0 V-8 | 5600 | Ranger Reg. Cab. (2WD) | 2.3 I-4 | 2240 | ML 430 | 4.3 V-8 | 5000 | AM/FM CD Player |
| Express/Savana/G1500 | 5.7 V-8 | 6100 | Ranger Reg. Cab. (4WD) | 3.0 V-6 | 2360 | MLSAMG | 5.5 V-8 | 5000 | Awning, A & E |
| Express/Savana/G2500 | 5.0 V-8 | 5400 | Ranger Reg. Cab. (2WD) | 4.0 V-6 | 3560 | Mercury | | | Swivel Rocker Chair |
| Express/Savana/G2500/3500 | 5.7 V-8 | 7900 | Windstar | 3.8 V-6 | 3500 | Mountaineer | 4.0 V-6 | 5460 | Microwave |
| K1500 Reg./Ext. Cab. (4WD) | 4.8 V-6 | 8000 | Honda | | | Mountaineer | 4.6 V-8 | 7300 | Oven |
| S Series/Sonoma | 4.3 V-6 | 6000 | Passport | 3.2 V-6 | 4500 | Villager | 3.3 V-6 | 3500 | Spare Tire & Wheel |
| Silverado/Sierra/C/K 1500 | 4.3 V-6 | 5200 | Odyssey | 3.5 V-6 | 3500 | Mitsubishi | | | Stabilizer Jacks (Four) |
| Chrysler | | | Hyundai | | | Montero Limited, XLS | 3.5 V-6 | 5000 | TV Antenna/Cable/Satellite Ready |
| Town & Country | 3.3, 3.8 V-6 | 3800 | Santa Fe (2WD) | 2.7 V-6 | 2700 | Montero Sport ES, LS | 3.0 V-6 | 5000 | Roof Ladder |
| Dodge | | | Santa Fe (4WD) | 2.7 V-6 | 2200 | Montero Sport XLS, Limited | 3.5 V-6 | 5000 | Outside Grill |
| Caravan | 3.3, 3.8 V-6 | 3800 | Isuzu | | | Nissan | | | Outside Shower |
| Caravan | 3.8 V-6 | 3500 | Rodeo/Rodeo Sport | 2.2, 2.6 I-4 | 2500 | Pathfinder | 3.5 V-6 | 5000 | Outside Sliding Drawer |
| Dakota (2WD) Reg. Cab. | 2.5 I-4 | 2200 | Rodeo | 3.2 V-6 | 4500 | Frontier | 2.4 I-4 | 3500 | Sink Cover |
| Dakota (2WD) Reg. Cab. | 3.9 V-6 | 5400 | Trooper | 3.5 V-6 | 5000 | Xterra | 3.3 V-6 | 5000 | Stove Cover |
| Dakota (2WD) Reg. Cab. | 4.7 V-8 | 6650 | Axiom | 3.5 V-6 | 4500 | Quest | 3.3 V-6 | 3500 | Tube Surround |
| Dakota (2WD) Club Cab. | 3.9 V-6 | 5150 | Jeep | | | Oldsmobile | | | Double Entry Step |
| Dakota (2WD) Club Cab. | 4.7 V-8 | 6450 | Grand Cherokee | 4.0 I-6 | 5000 | Bravada | 4.2 I-6 | 6300 | Chrome Trim Rings w/Cap |
| Dakota (4WD) Reg. Cab. | 3.9 V-6 | 5100 | Grand Cherokee | 4.7 V-8 | 6500 | Silhouette | 3.4 V-6 | 3500 | Raised Panel Overhead Door |
| Dakota (4WD) Reg. Cab. | 4.7 V-8 | 6400 | Liberty | 2.4 I-4 | 2000 | Pontiac | | | Raised Panel Refer Door |
| Dakota (4WD) Club Cab. | 3.9 V-6 | 4900 | Liberty | 3.7 V-6 | 5000 | Aztec | 3.4 V-6 | 3500 | Fan-Tastic Fan |
| | | | Wrangler | 4.0 I-6 | 2000 | Montana | 3.4 V-6 | 3500 | 2 Bar Stools |
| | | | Kia | | | | | | |
| | | | Sportage | 2.0 I-4 | 2000 | | | | |

R-Vision, Inc.

2666 S. Country Club Drive
Warsaw, IN 46580
www.trail-lite.com

As R-Vision constantly strives to improve our product, all specifications listed in this informative brochure are subject to change without notice or obligation. Photos may show optional equipment which is not included in the purchase price of the unit. Test drive and review a current model on your dealer's lot today.

R-100-050

©2003 R-Vision, Inc.

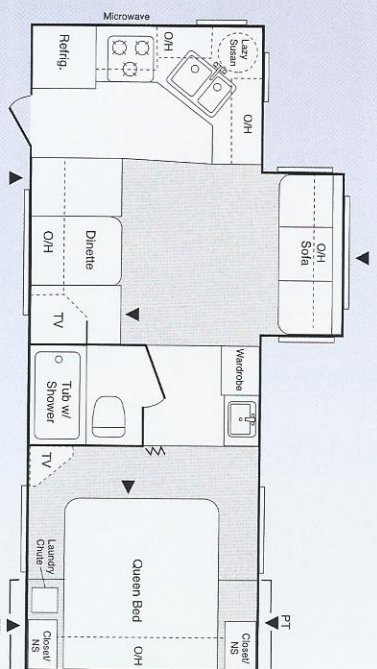
JERRY'S TRAILERS & CAMPERS

2601 S. 13th St.
Your Dealer

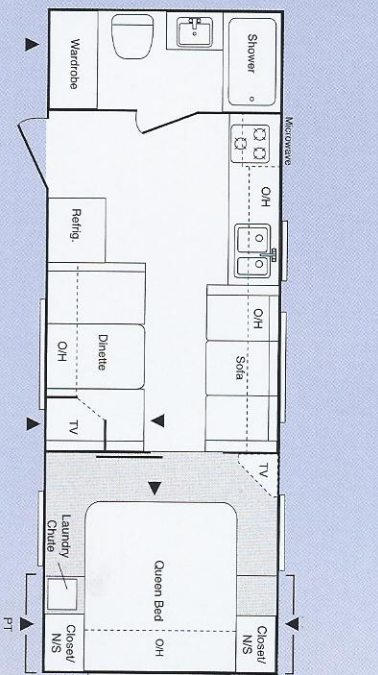
Norfolk, NE 68701
(402) 371-1306

THE E-Z TOW *SPRINTER*

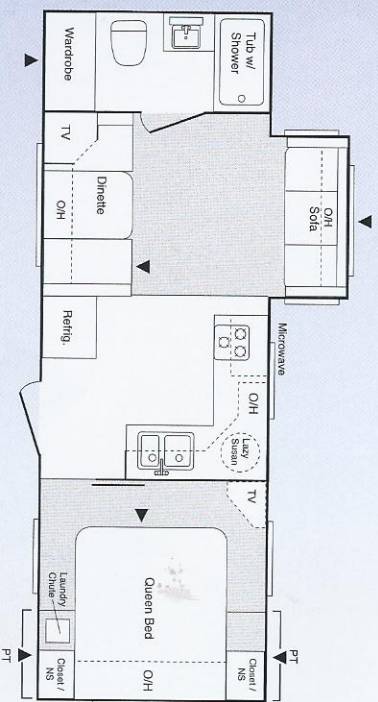
SMALLER, LIGHTER, WITH ALL THE QUALITY OF OUR LARGER MODELS



249 RKS



248 RB



259 RBS

Travel Trailers E-Z TOW

For those who prefer a smaller, lighter unit, we offer the 2004 Sprinter E-Z Tow in lengths under 28 feet. The E-Z tow offers you all the quality, interior styling and convenience of our longer Sprinters, but it is lighter and also includes a sloped front-end profile to improve aerodynamics. The results—great space and style with E-Z towability. The name says it all.

| E-Z TOW | Gross Weight* | Carrying Cap. | Dry Axle Weight | Ext. Length | Ext. Width (Top of A/C) | Ext. Height | Fresh Water | Waste Water | Grey Water | LPG Cap. | Tire Size |
|----------------|---------------|---------------|-----------------|-------------|-------------------------|-------------|-------------|-------------|------------|----------|-----------|
| 248 RB | 4825 | 2675 | 4440 | 26' 6" | 8' | 10' 2" | 45 gal | 38 gal | 61 gal | 60 | 205/75R15 |
| 249 RKS | 5900 | 1720 | 5380 | 26' 6" | 8' | 10' 10" | 45 gal | 38 gal | 61 gal | 60 | 205/75R15 |
| 259 RBS | 7640 | 5650 | 1990 | 27' 6" | 8' | 10' 10" | 45 gal | 38 gal | 61 gal | 60 | 205/75R15 |

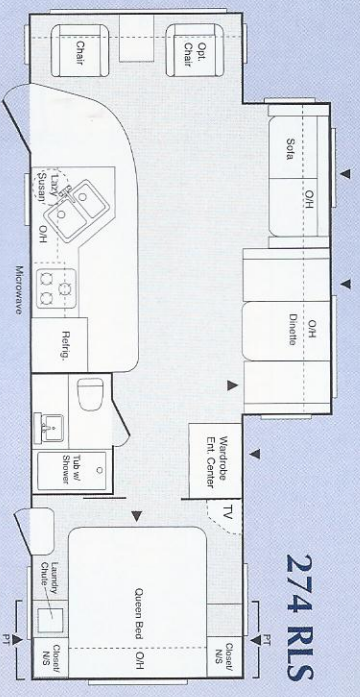
*Gross Dry Weight does not include options or fluids.



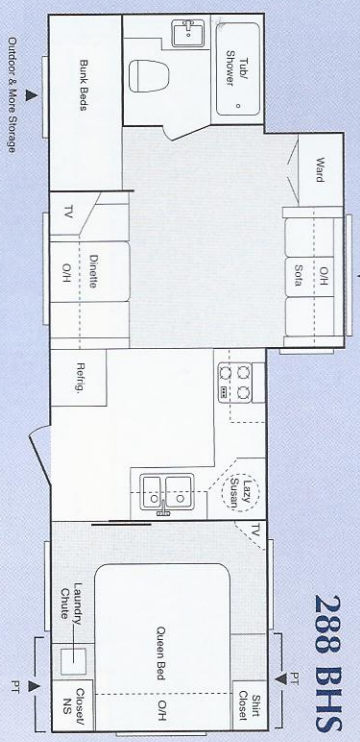
SPRINTER

by Keystone

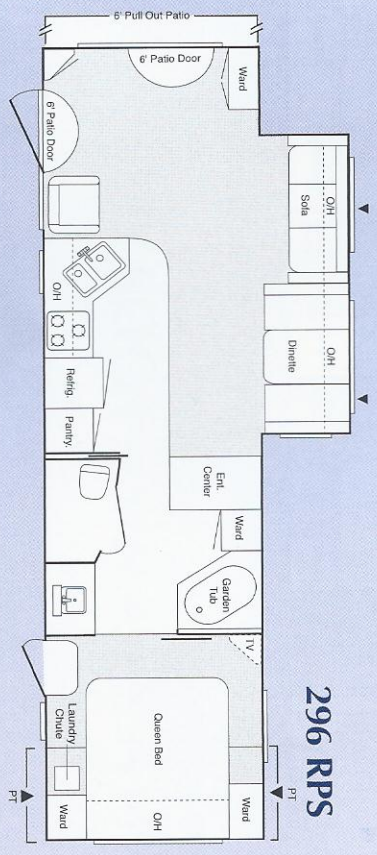
You don't have to settle...



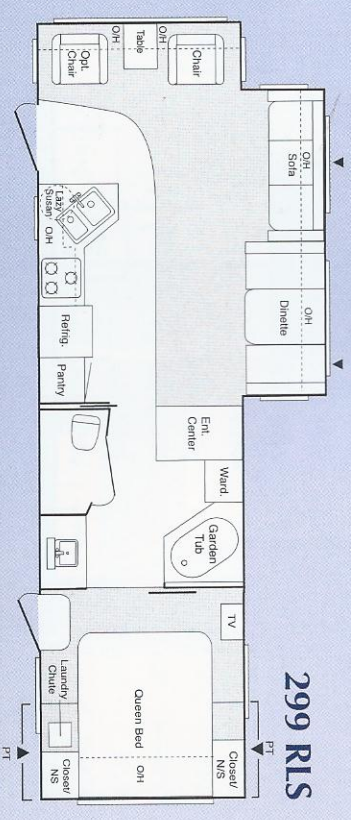
274 RLS



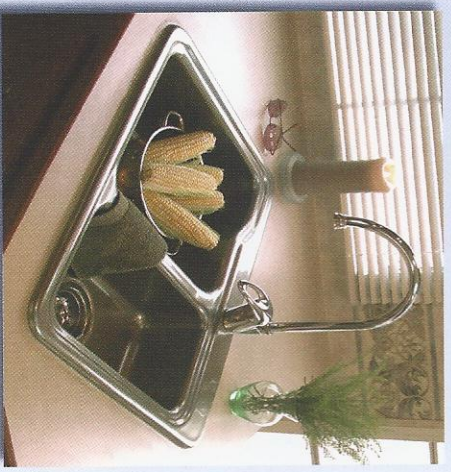
288 BHS



296 RPS



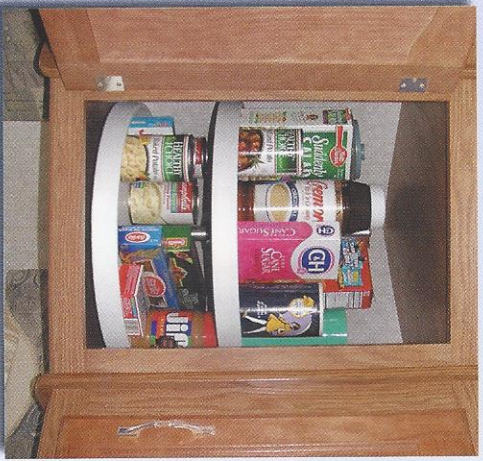
299 RLS



Our residential 60/40 Silver Nickel sink with matching high-spout faucet, so convenient for easy meal preparation and clean-up.



The residential look of Sprinter's stylish camel-back sofa is in keeping with the latest home furnishing trends. Optionally, the sofa is available as a Hide-a-Bed.*



Lazy Susan maximizes interior cabinet storage and provides easier access to all your supplies. Saves you time, too.



Every Sprinter includes a coat rack conveniently located near the entrance door. Touches like these in every corner of your Sprinter show you that we care about your comfort and convenience.

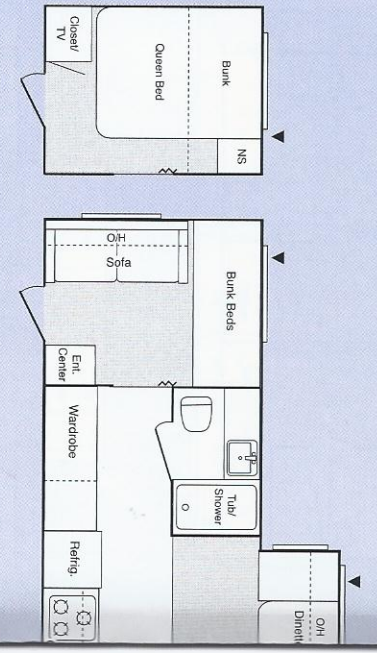
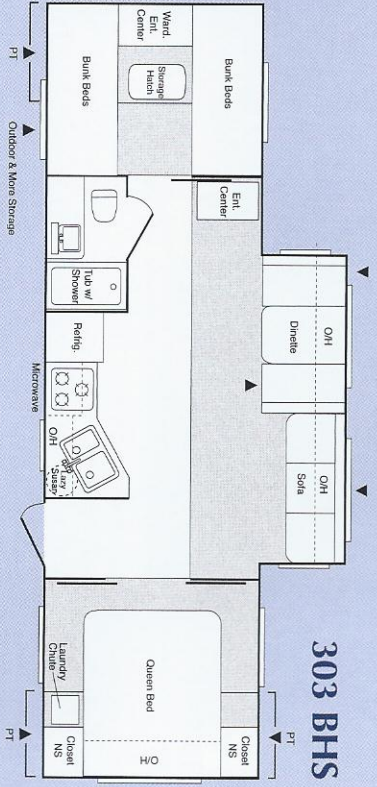
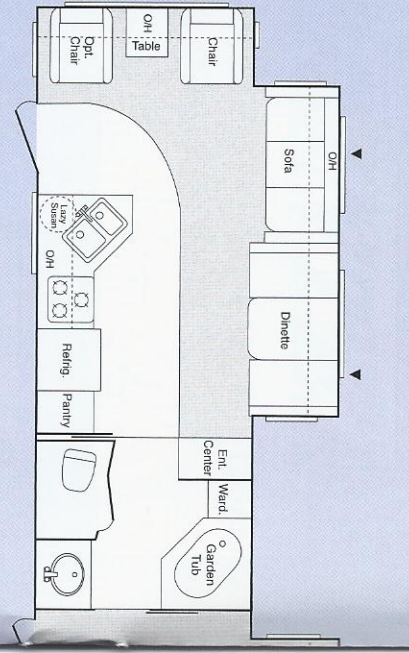
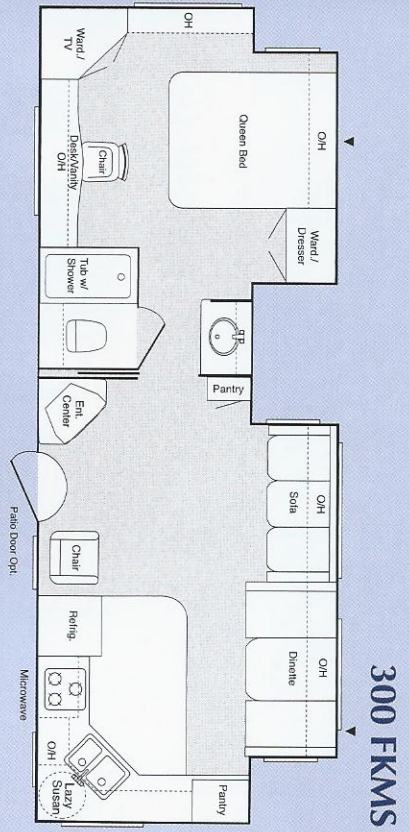
*Available on most models.

Travel Trailers

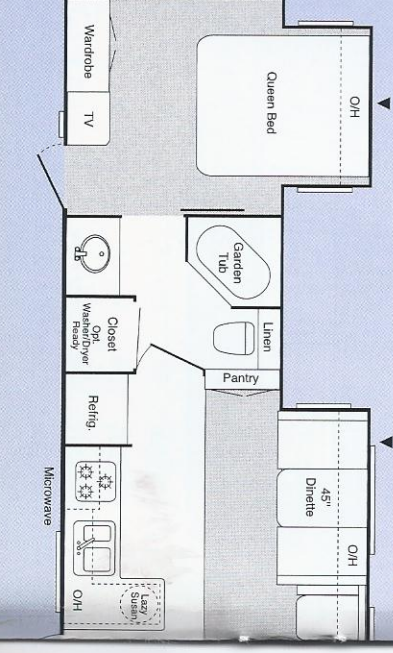
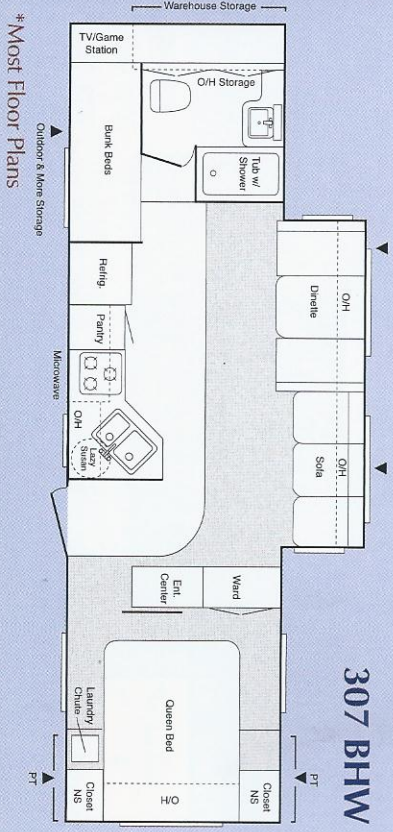
FEATURES

IN EVERY SPRINTER

- All Ceilings Increased to 80"
- Enlarged Overhead Cabinets
- Upgraded Carpeting and Wallboard with Border
- Unique Laundry Chute or Clothes Hamper; Clothes Empty Into Outside Access Storage Area*
- Satin Nickel Coat Rack at Entry Door
- Residential Kitchen Sink with Deep 60/40 Basins with High-Arch Faucet
- Lazy Susan Maximizes Cabinet Space
- Swing-Out Fifth Wheel Entry Handle
- Exterior Security Lights on All Fifth Wheels
- TV Antenna
- Cable Hook-up, Satellite Prep
- Pass-Through Exterior Storage*
- Designer Interiors with Hardwood Raised-Cathedral Cabinet Doors and Drawer Fronts
- Tip-out Under sink Silverware Storage
- 45" Dinette in Most Slideouts for Extra Sleeping Room and More Comfortable Dining
- F-Z Slide Storage Tray with Booth Dinettes
- Full-Function Monitor Panel in All Kitchens
- Residential-Style Door Latches & Six-Panel Doors
- Large Skylight over Every Shower and Tub
- Deluxe Mastercraft® Residential-Quality Furniture
- Awning
- Ducted Air Conditioning
- Large Microwave
- Mini-Blinds
- Upgraded Innerspring Mattress

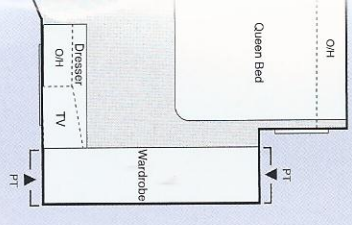


JOIN THE SPRINTER FAMILY TODAY!



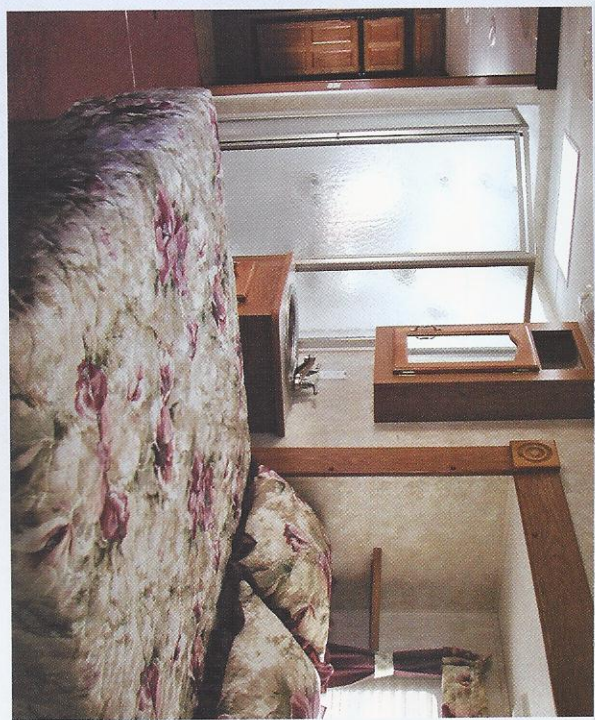
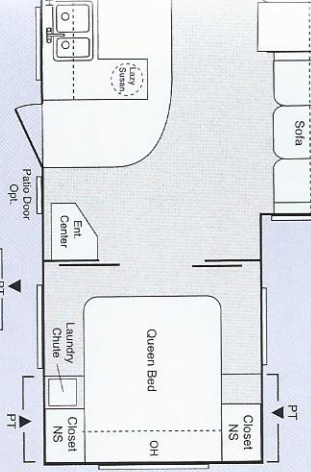
* Most Floor Plans

320 RLS



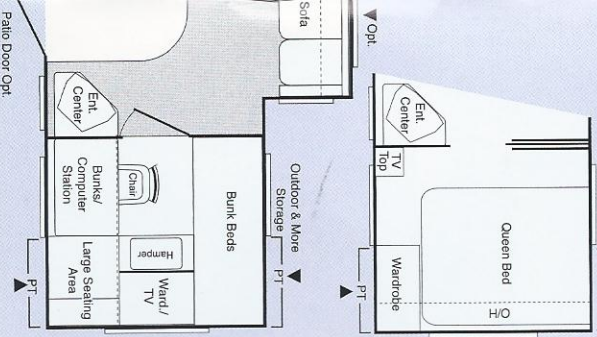
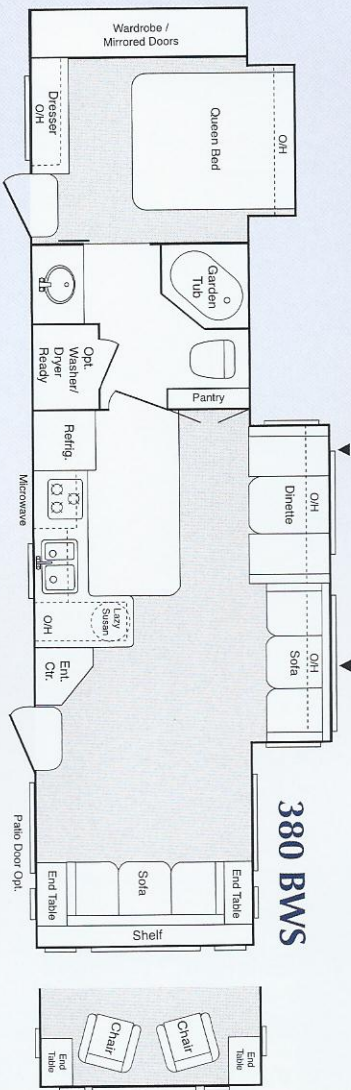
SPRINTER OFFERS TRAVEL TRAILERS OR HIGH-OR MID-PROFILE FIFTH WHEELS WITH A VARIETY OF CONSTRUCTION CHOICES. THERE'S A SPRINTER FOR EVERY BUDGET, EVERY LIFE STYLE.

365 BHS



The Sprinter 293 FWSLS Fifth Wheel features a bedroom slideout with the bathroom on the upper level, creating a spacious Master Suite. The Silver Nickel fixtures and sink, the garden shower and the private compartment for the commode all add to the luxury of this double-slideout floor plan. A generously deep closet with mirrored doors and a deep-drawer chest are among the many other features of the Master Suite.

380 BWS



| TRAVEL TRAILER | GWWR | Gross Dry Weight ** | Carrying Cap. | Hitch | Dry Axle Weight | Ext. Length | Ext. Width | Ext. Height (Top of A/C) | Fresh Water | Waste Water | Grey Water | LPG Cap. | Tire Size |
|----------------|-------|---------------------|---------------|-------|-----------------|-------------|------------|--------------------------|-------------|-------------|------------|----------|-----------|
| 274 RLS | 9400 | 6410 | 2990 | 600 | 6220 | 29' 1" | 8' | 10' 10" | 45 gal | 43 gal | 38 gal | 60 | 225/75R15 |
| 288 BHS | 9580 | 6470 | 3110 | 780 | 5980 | 30' 6" | 8' | 10' 10" | 45 gal | 43 gal | 56 gal | 60 | 225/75R15 |
| 296 RPS | 9620 | 7700 | 1920 | 700 | 7200 | 32' 1" | 8' | 10' 10" | 45 gal | 32 gal | 48 gal | 60 | 225/75R15 |
| 299 RLS | 9680 | 6780 | 2900 | 880 | 6200 | 32' 1" | 8' | 10' 10" | 45 gal | 43 gal | 56 gal | 60 | 225/75R15 |
| 300 FKMS | 11240 | 7870 | 3370 | 1080 | 7100 | 32' 1" | 8' | 11' 1" | 45 gal | 43 gal | 61 gal | 40 | 225/75R15 |
| 303 BHS | 9620 | 6830 | 2790 | 820 | 6340 | 33' 2" | 8' | 10' 10" | 45 gal | 43 gal | 38 gal | 60 | 225/75R15 |
| 307 BHW | 9520 | 7140 | 2380 | 720 | 6720 | 32' 1" | 8' | 10' 10" | 45 gal | 43 gal | 38 gal | 60 | 225/75R15 |
| 320 RLS | 11000 | 8010 | 2990 | 840 | 7460 | 34' 1" | 8' | 11' 1" | 45 gal | 43 gal | 56 gal | 60 | 225/75R15 |
| 365 BHS | 11140 | 8205 | 2935 | 980 | 7320 | 38' 1" | 8' | 10' 11" | 45 gal | 43 gal | 56 gal | 60 | 225/75R15 |
| 377 BHS | 11220 | 8560 | 2660 | 1060 | 7800 | 38' 7" | 8' | 10' 11" | 45 gal | 43 gal | 56 gal | 60 | 225/75R15 |
| 380 BWS | 11400 | 8170 | 3230 | 1240 | 7300 | 38' 7" | 8' | 10' 11" | 45 gal | 43 gal | 56 gal | 60 | 225/75R15 |

**Gross Dry Weight does not include optional equipment or fluids.



LA



SPRINTER "LA" LAMINATED, ALUMINUM-FRAMED SIDEWALLS

Teamed with Sprinter's stylish, aerodynamic exterior design—strength, light weight, maximum towability, and unprecedented style—all at a price you can afford.

Now standard on all high-profile fifth wheels, and optional on all mid-profile Fifth wheels*

* Mid-Profile Sprinters also available with conventional construction.

LA DELIVERS ...

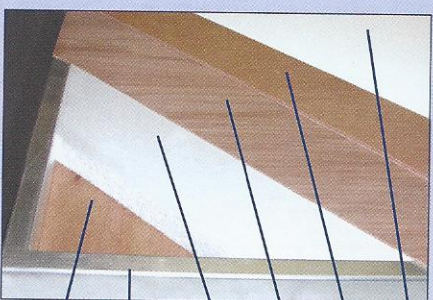
Construction previously found only in much higher priced fifth wheels.

Exterior design utilizing the latest technology in wind resistance, engineered for maximum ease of handling.

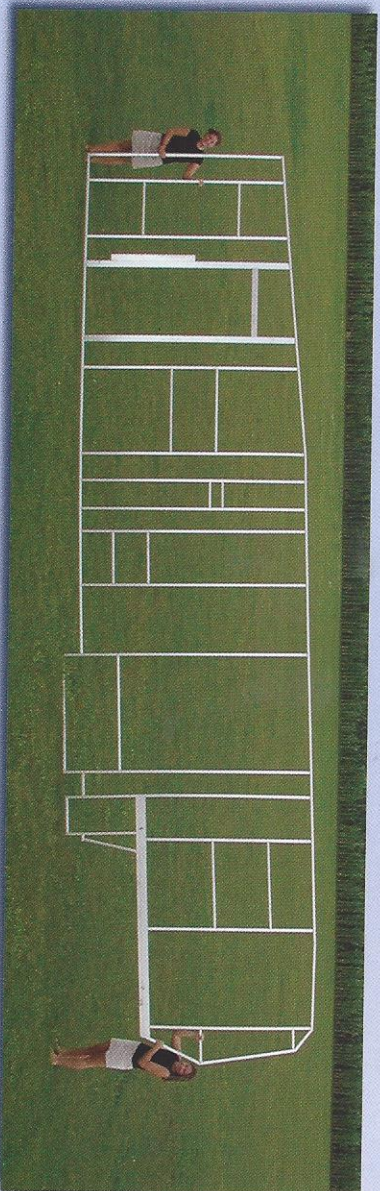
Advanced Sprinter 6-layer sidewalls for a well-insulated, yet lightweight fifth wheel with uncompromised structural integrity.

LA DELIVERS ...

6-LAYER LAMINATED CONSTRUCTION

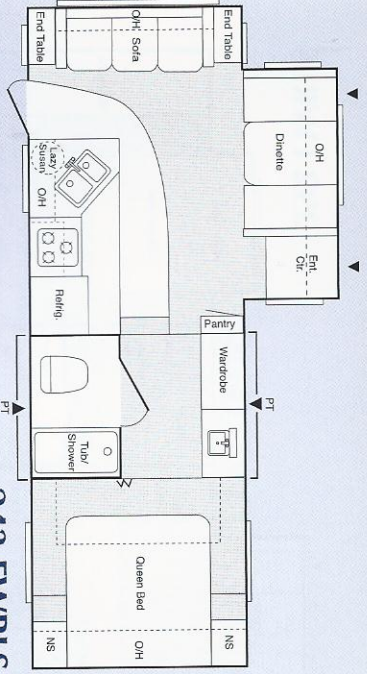


1. Fiberglass Exterior
2. Outer Luan Panel
3. Inner Luan Panel
4. Dense Block Foam Insulation
5. Tubular Aluminum Frame
6. Interior Paneling

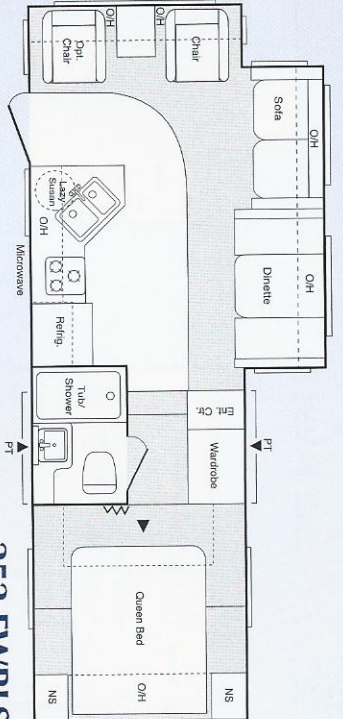


LA DELIVERS ...

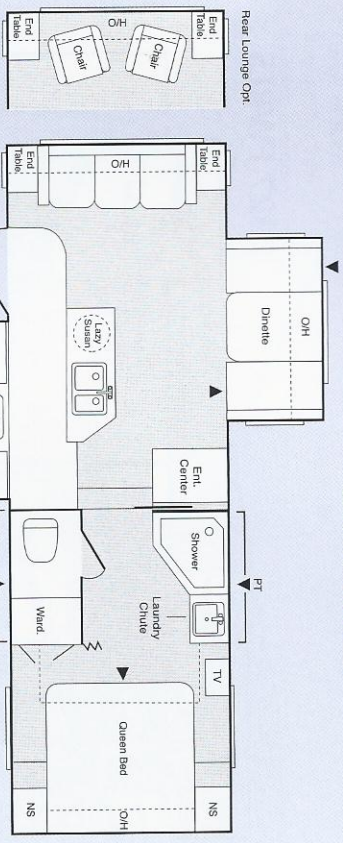
Fully welded aluminum sidewalls, light, yet rugged, strong and stable.



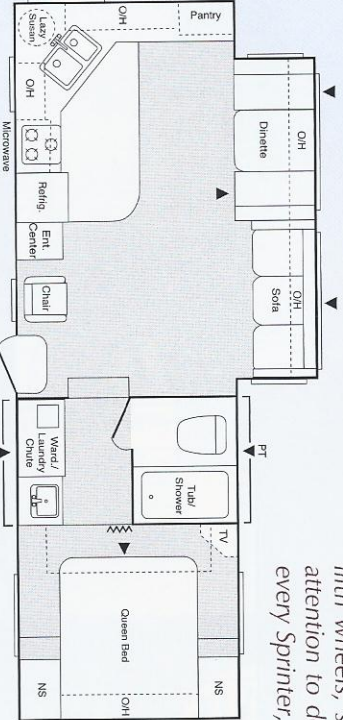
243 FWRLS



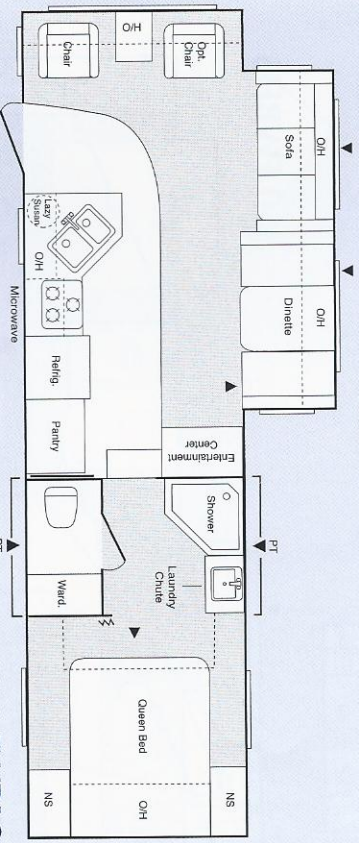
252 FWRLS



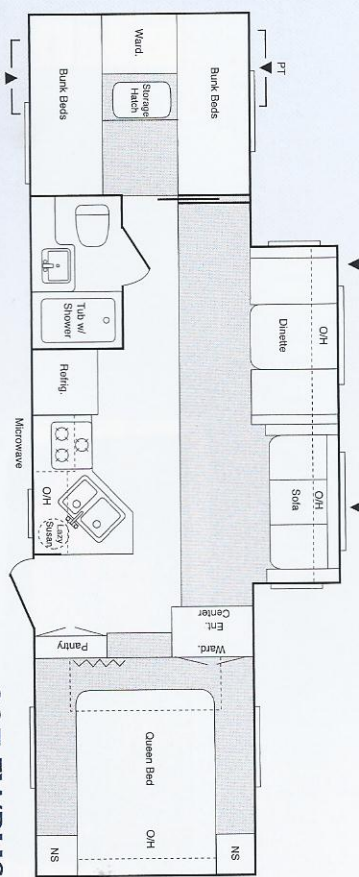
262 FWRLS



274 FWRKS



276 FWRLS



297 FWBHS



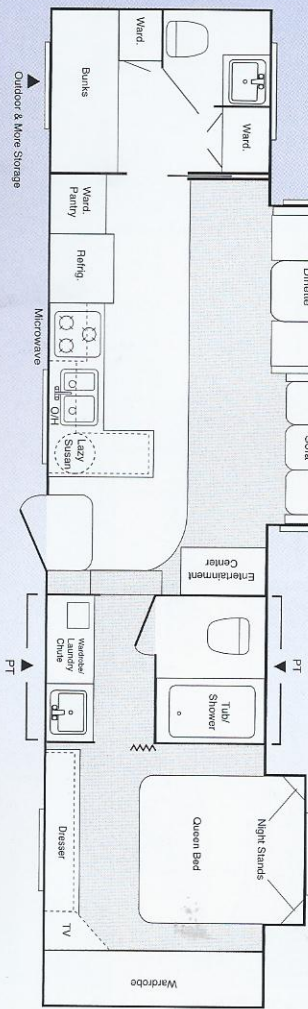
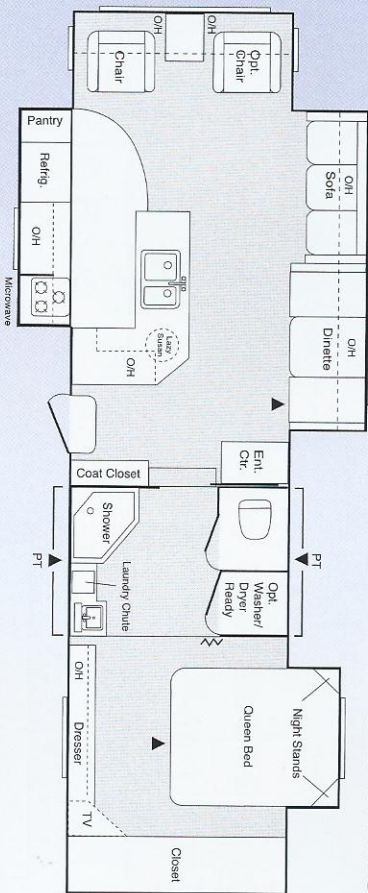
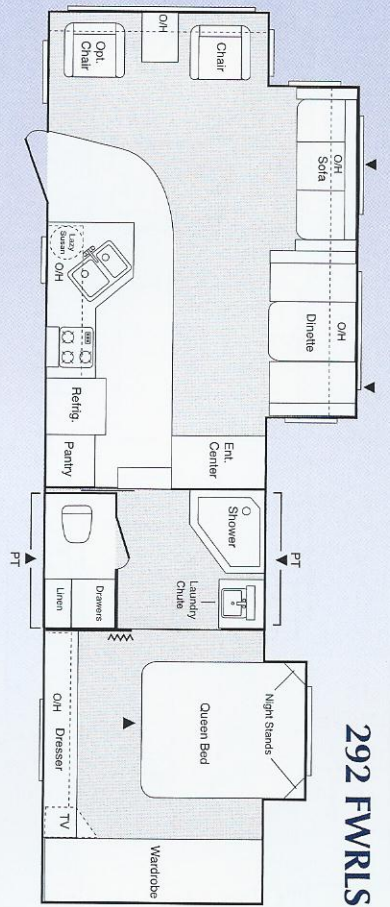
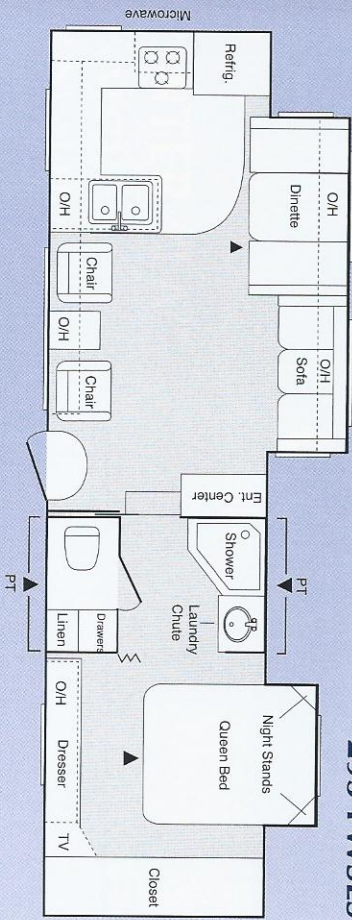
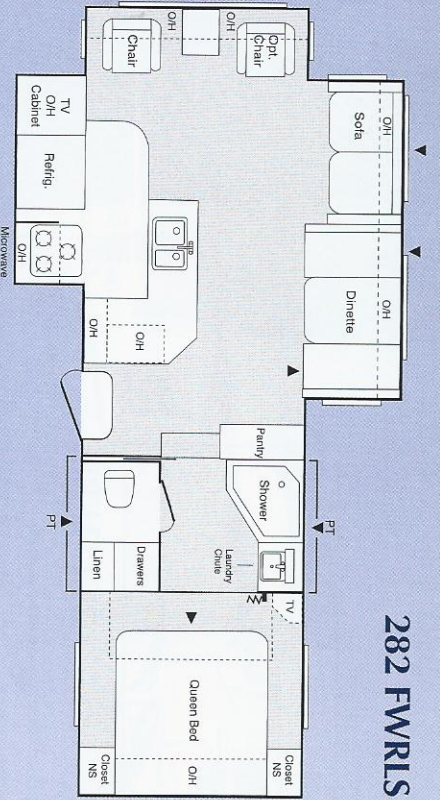
Features like this folding grab handle, available on all Sprinter fifth wheels, show the careful attention to detail you find on every Sprinter, inside and out.



Sprinter's nicely concealed laundry chute sends clothes to the convenient laundry basket below.

| FIFTH WHEEL | GVWR | Gross Dry Weight * | Carrying Cap. | Hitch | Dry Axle Weight | Ext. Length | Ext. Width | Ext. Height (Top of A/C) | Fresh Water | Waste Water | Grey Water | LPG Cap. | Tire Size |
|------------------|-------|--------------------|---------------|-------|-----------------|-------------|------------|--------------------------|-------------|-------------|------------|----------|-----------|
| 243 FWRLS | 8180 | 6330 | 1850 | 1180 | 5420 | 26' 6" | 8' | 11' 10" | 45 gal | 43 gal | 38 gal | 60 | 205/75R15 |
| 252 FWRLS | 8200 | 6930 | 1270 | 1200 | 5860 | 26' 5" | 8' | 11' 10" | 45 gal | 43 gal | 38 gal | 60 | 205/75R15 |
| 262 FWRLS | 9960 | 7105 | 2855 | 1160 | 6420 | 27' 6" | 8' | 11' 10" | 45 gal | 43 gal | 38 gal | 60 | 225/75R15 |
| 274 FWRKS | 10150 | 7305 | 2845 | 1350 | 6105 | 28' 4" | 8' | 11' 10" | 45 gal | 43 gal | 56 gal | 60 | 225/75R15 |
| 276 FWRLS | 10100 | 7200 | 2900 | 1300 | 6040 | 29' 7" | 8' | 11' 10" | 45 gal | 43 gal | 56 gal | 60 | 225/75R15 |
| 297 FWBHS | 11500 | 7740 | 3760 | 1340 | 6700 | 31' 6" | 8' | 11' 10" | 45 gal | 43 gal | 56 gal | 60 | 225/75R15 |

*Gross Dry Weight does not include optional equipment or fluids.



SPRINTER HIGH-PROFILE FIFTH WHEELS GIVE YOU MORE STORAGE SPACE!

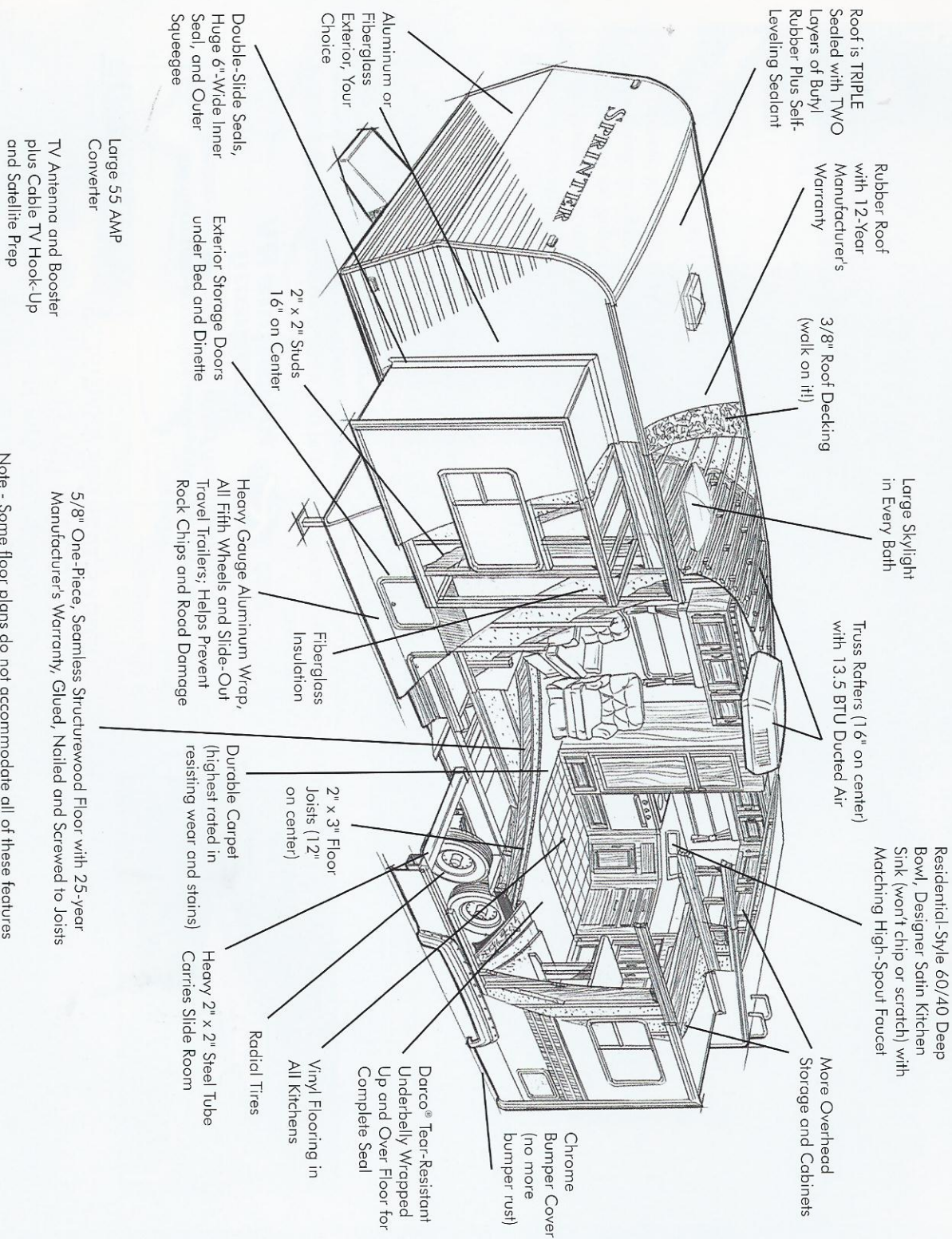
Sprinter high-profile fifth wheels give you plenty of storage space. An amazing 55 cu. ft. of easy-access, pass-through storage lets you take along all your favorite sporting equipment.



| FIFTH WHEEL | GVWR | Gross Dry Weight* | Carrying Cap. | Hitch Weight | Dry Axle Weight | Ext. Length | Ext. Width | Ext. Height (Top of AC) | Fresh Water | Waste Water | Grey Water | LPG Cap. | Tire Size |
|------------------|-------|-------------------|---------------|--------------|-----------------|-------------|------------|-------------------------|-------------|-------------|------------|----------|-----------|
| 282 FWRLS | 11640 | 8310 | 3330 | 1480 | 6960 | 29'6" | 8' | 12'10" | 45 gal | 43 gal | 56 gal | 60 | 225/75R15 |
| 292 FWRLS | 11900 | 9100 | 2800 | 1740 | 7660 | 31'11" | 8' | 12'10" | 45 gal | 43 gal | 56 gal | 60 | 225/75R15 |
| 293 FWSLS | 12360 | 9520 | 2840 | 2200 | 7620 | 31'11" | 8' | 12'10" | 45 gal | 43 gal | 56 gal | 60 | 225/75R15 |
| 327 FWRLS | 14280 | 9810 | 4470 | 2280 | 8060 | 34'3" | 8' | 12'10" | 45 gal | 43 gal | 56 gal | 60 | 235/85R16 |
| 350 FWBHS | 12540 | 9460 | 3080 | 2380 | 7320 | 36'9" | 8' | 12'10" | 45 gal | 86 gal | 61 gal | 60 | 225/75R15 |

*Gross Dry Weight does not include optional equipment or fluids.

"QUALITY CONSTRUCTION GETS UNDER OUR SKIN"



Note - Some floor plans do not accommodate all of these features
High-Profile Fifth Wheels Feature LA Construction (Laminated, Aluminum-Framed Sidewalls)

INNER FEATURES

TRAVEL TRAILERS AND FIFTH WHEELS



Sprinter's conventional Travel Trailers and Fifth Wheels utilize Alumi-Guard™, our exclusive building technique. Alumi-Guard™ places aluminum in the critical areas of construction — around doors and exterior storage compartments, providing the protection that only aluminum can offer. Alumi-Guard™ extends the life of your Sprinter by protecting these areas from the damaging effects of moisture. Alumi-Guard™ is offered on all Sprinter products at the same price point our competition offers for wood alone!



Look for the Space Maker™ Seal on every Sprinter product. It is your assurance that your Sprinter is equipped with our exclusive under-floor fresh water storage system. Saves space, resists freezing, enhances towability, and provides extra fresh-water capacity.

OPTIONS

- FIBERGLASS EXTERIOR
- STABILIZER JACKS
- OUTSIDE SHOWER
- 10-GAL. HOT WATER HEATER
- PATIO DOOR
- FREE-STANDING TABLE WITH FOUR CHAIRS
- WASHER/DRYER HOOK-UP
- EXTRA LARGE REFRIGERATOR
- HIDE-A-BED SOFAS
- 15,000 BTU AIR CONDITIONER
- SOLID WOOD REFRIGERATOR FRONT
- SPARE TIRE AND CARRIER
- RESIDENTIAL REFRIGERATOR



Sprinter bunk models offer you unprecedented ease of access and storage capacities. Look how our Outdoor & More™ storage, * shown here, has ample room for both parent's and kid's bikes. Or, take along a tent, barbecue grill or other oversize equipment. Outdoor & More offers 60 cu.ft. of space. *available on most bunk models

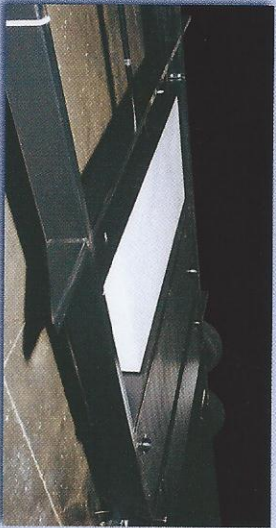
CONSTRUCTION

BUILT WITH INTEGRITY... from the inside out

- Cambered steel frame with extra supporting outriggers under every Sprinter RV.
- One-piece, seamless, 5/8" floor deck with a 25-yr. mfr.'s warranty.
- Rubber roof (12-yr. mfr.'s warranty) rolled over side and rear walls to eliminate seams and prevent potential leaks.



Welded aluminum supports in all raised-bath fifth wheel decks provide strength and rigidity in all critical high-stress areas.



With Space-Maker™ useable storage space is greatly expanded by removing the fresh water tank from the interior of the unit. The Space Maker's location also lowers the center of gravity, improving towability. The heated compartment gives you added protection when cold-climate camping.

from the inside out

- Fully-decked roof on trussed rafters, a full 5" thick, providing an R-11 insulation rating.
- Easy-opening entry steps with extra-low first step.
- Taller, wider entry door, radius corners.
- Outside storage doors.

SPRINTER VALUE

Sprinter value happens because we focus on the manufacturing process. We put the dollars that many companies spend on large advertising campaigns, executive benefits, and costly office complexes into improving our products. We also strive to increase our manufacturing efficiencies while maintaining high quality. We achieve this high level of quality by employing a workforce from a community which still values craftsmanship. Finally, we listen to our Sprinter customers across the country. We learned a long time ago that great ideas come from the people who use our products daily. We appreciate and value this input and have implemented many of these ideas into our products.

The result of these efforts has been dramatic. Sprinter recreational vehicles are now seen everywhere—on the Interstates, on the Trans-Canadian Highway, from the Rockies to the Everglades, in just about any camping resort or national park you enter in the U.S. or Canada. We welcome you to join the Sprinter family of travel trailers and fifth wheels, where quality, comfort, and function meet.



**Keystone RV
Company**

17400 Hackberry Drive Goshen, Indiana 46526
(574) 535-2100 www.keystone-sprinter.com

Your Sprinter Dealer:

JERRY'S TRAILERS & CAMPER'S

2601 S. 13th St.
Norfolk, NE 68701
(402) 371-1306



RVMA
RECREATIONAL VEHICLE
MANUFACTURERS ASSOCIATION



"Warehouse storage," a new feature for 2004, is available in the 307 BHW. If you're looking for convenience and easy access to tools and toys, this is your floor plan.