

K-Z, Inc.

2004 MODELS

# Sportsmen<sup>®</sup>

FOLLOW YOUR DREAM...



- FIFTH WHEELS
- TRAVEL TRAILERS
- SPORTSMEN-LITES
- TRUCK CAMPERS

BUILDING QUALITY AND FUN FOR OVER 32 YEARS



## **SPORTSMEN-LITE 2004**

Not your typical lightweight! We packed in everything you need to get you and your gear on the road with convenience in a well-built, easy-to-pull package. Generous storage space. Light enough for most family vehicles. Enough options and floorplans so you can select exactly the right unit for your camping style with room to grow.

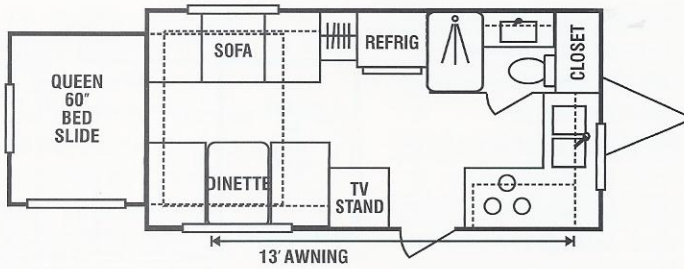


# SPORTSMEN-LITE TRAVEL TRAILERS

SLTS

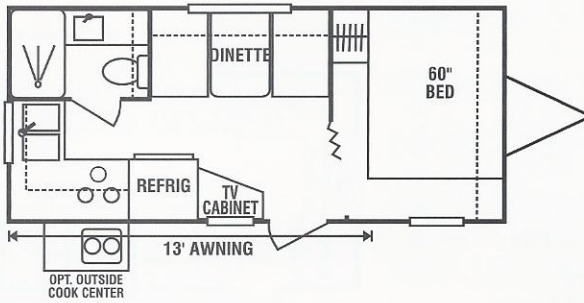
## 1702QS

UVW (Unloaded Vehicle Wt.)	3881	Refrigerator (cu. feet)	6
Dry Hitch Wt.	500	Water Heater Cap. (gal.)	6 G/E*
Dry Axle Wt.	3381	Water Cap. (gal.)	40
NCC (Net Carrier Capacity)	1631	Waste Water Cap. (gal.)	32
GVWR	5512	Gray Water Cap. (gal.)	32
Interior Height	78"	LP Gas Cap. (lbs.)	60
Exterior Height	102"	Furnace BTU's (1,000's)	20
Exterior Length	19'11"	Tire Size	14"
Exterior Width	96"		*DSI waterheater



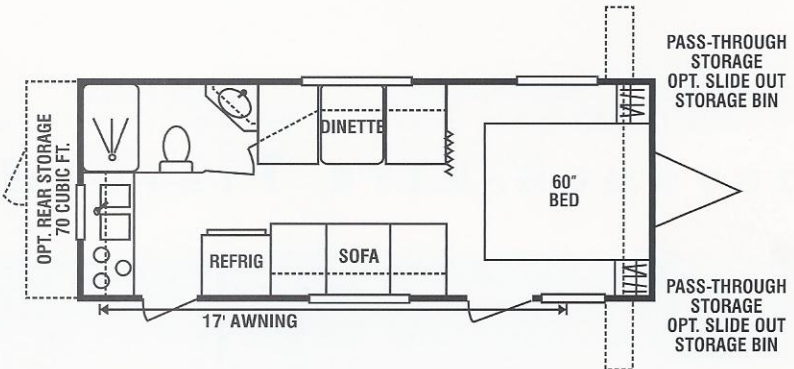
## 2002

UVW (Unloaded Vehicle Wt.)	3523	Refrigerator (cu. feet)	6
Dry Hitch Wt.	380	Water Heater Cap. (gal.)	6 G/E*
Dry Axle Wt.	3143	Water Cap. (gal.)	40
NCC (Net Carrier Capacity)	1985	Waste Water Cap. (gal.)	32
GVWR	5512	Gray Water Cap. (gal.)	32
Interior Height	78"	LP Gas Cap. (lbs.)	60
Exterior Height	102"	Furnace BTU's (1,000's)	16
Exterior Length	21'6"	Tire Size	14"
Exterior Width	96"		*DSI waterheater



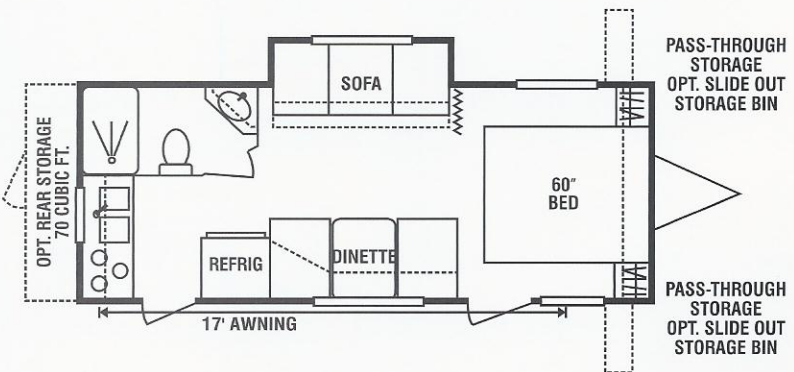
## 2303 - optional Rear Storage

UVW (Unloaded Vehicle Wt.)	3583	Refrigerator (cu. feet)	6
Dry Hitch Wt.	340	Water Heater Cap. (gal.)	6 G/E*
Dry Axle Wt.	3243	Water Cap. (gal.)	40
NCC (Net Carrier Capacity)	1929	Waste Water Cap. (gal.)	32
GVWR	5512	Gray Water Cap. (gal.)	32
Interior Height	78"	LP Gas Cap. (lbs.)	60
Exterior Height	102"	Furnace BTU's (1,000's)	20
Exterior Length	24'4"	Tire Size	14"
Exterior Width	96"		*DSI waterheater



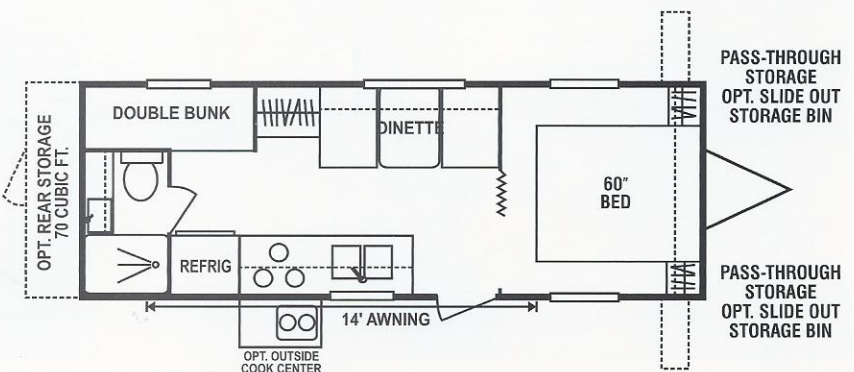
## 2303P - optional Rear Storage

UVW (Unloaded Vehicle Wt.)	3883	Refrigerator (cu. feet)	6
Dry Hitch Wt.	340	Water Heater Cap. (gal.)	6 G/E*
Dry Axle Wt.	3543	Water Cap. (gal.)	40
NCC (Net Carrier Capacity)	1629	Waste Water Cap. (gal.)	32
GVWR	5512	Gray Water Cap. (gal.)	32
Interior Height	78"	LP Gas Cap. (lbs.)	60
Exterior Height	102"	Furnace BTU's (1,000's)	20
Exterior Length	24'4"	Tire Size	14"
Exterior Width	96"		*DSI waterheater



## 2404 - optional Rear Storage

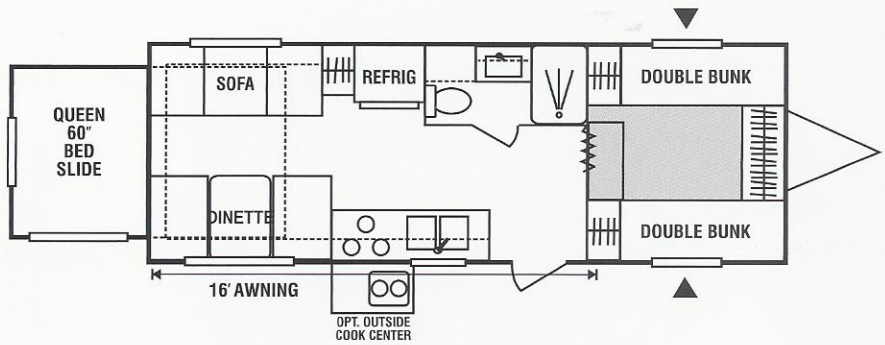
UVW (Unloaded Vehicle Wt.)	4310	Refrigerator (cu. feet)	6
Dry Hitch Wt.	330	Water Heater Cap. (gal.)	6 G/E*
Dry Axle Wt.	3980	Water Cap. (gal.)	40
NCC (Net Carrier Capacity)	1202	Waste Water Cap. (gal.)	32
GVWR	5512	Gray Water Cap. (gal.)	32
Interior Height	78"	LP Gas Cap. (lbs.)	60
Exterior Height	102"	Furnace BTU's (1,000's)	20
Exterior Length	26'	Tire Size	14"
Exterior Width	96"		*DSI waterheater



# SPORTSMEN-LITE TRAVEL TRAILERS

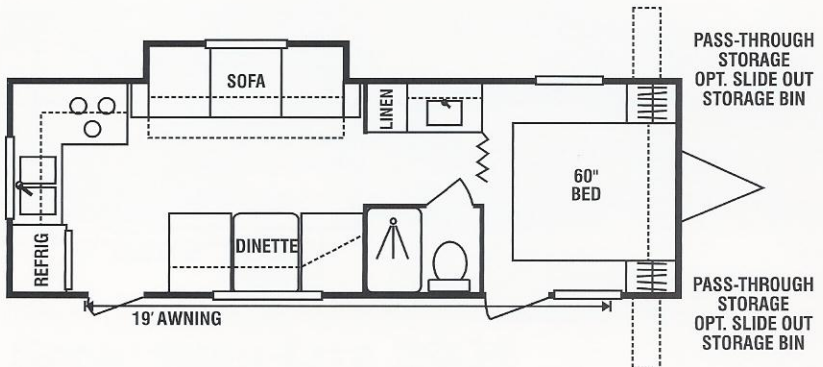
## 2505QSS

UVW (Unloaded Vehicle Wt.)	4951	Refrigerator (cu. feet)	6
Dry Hitch Wt.	620	Water Heater Cap. (gal.)	6 G/E*
Dry Axle Wt.	4331	Water Cap. (gal.)	40
NCC (Net Carrier Capacity)	1917	Waste Water Cap. (gal.)	32
GVWR	6868	Gray Water Cap. (gal.)	32
Interior Height	78"	LP Gas Cap. (lbs.)	60
Exterior Height	102"	Furnace BTU's (1,000's)	20
Exterior Length	2610"	Tire Size	14"
Exterior Width	96"		*DSI waterheater



## 2605P

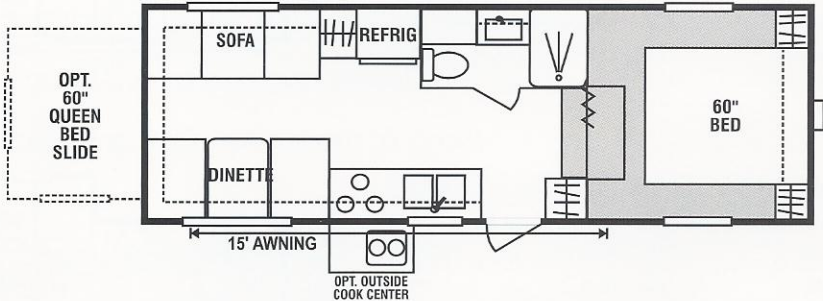
UVW (Unloaded Vehicle Wt.)	5133	Refrigerator (cu. feet)	6
Dry Hitch Wt.	400	Water Heater Cap. (gal.)	6 G/E*
Dry Axle Wt.	4733	Water Cap. (gal.)	40
NCC (Net Carrier Capacity)	1735	Waste Water Cap. (gal.)	32
GVWR	6868	Gray Water Cap. (gal.)	32
Interior Height	78"	LP Gas Cap. (lbs.)	60
Exterior Height	102"	Furnace BTU's (1,000's)	20
Exterior Length	279"	Tire Size	14"
Exterior Width	96"		*DSI waterheater



# SPORTSMEN-LITE FIFTH WHEELS

## 2253 - opt. Queen Slide - Med Profile

UVW (Unloaded Vehicle Wt.)	4483	Refrigerator (cu. feet)	6
Dry Hitch Wt.	940	Water Heater Cap. (gal.)	6 G/E*
Dry Axle Wt.	3543	Water Cap. (gal.)	40
NCC (Net Carrier Capacity)	1785	Waste Water Cap. (gal.)	32
GVWR	6268	Gray Water Cap. (gal.)	32
Interior Height	78"	LP Gas Cap. (lbs.)	60
Exterior Height	134"	Furnace BTU's (1,000's)	20
Exterior Length	245"	Tire Size	14"
Exterior Width	96"		*DSI waterheater



## 2352P - Medium Profile

UVW (Unloaded Vehicle Wt.)	4851	Refrigerator (cu. feet)	6
Dry Hitch Wt.	800	Water Heater Cap. (gal.)	6 G/E*
Dry Axle Wt.	4051	Water Cap. (gal.)	55
NCC (Net Carrier Capacity)	1417	Waste Water Cap. (gal.)	32
GVWR	6268	Gray Water Cap. (gal.)	32
Interior Height	78"	LP Gas Cap. (lbs.)	60
Exterior Height	134"	Furnace BTU's (1,000's)	20
Exterior Length	244"	Tire Size	14"
Exterior Width	96"		*DSI waterheater



## TRAVEL TRAILERS & FIFTH WHEEL STANDARD FEATURES

- 13,500 BTU A/C
- Awning
- OTR Microwave\*
- 6 CU Refrigerator
- Oven
- Stove Cover
- AM-FM Stereo w/ CD Player
- Acrylic White Sink w/ High Rise Faucet
- Outside Cooktop or RVQ Grill\*
- Double Step
- TV Antenna W/ Booster
- Cable Hook Up
- TV Shelf in Bedroom
- Night Shades\*
- 2 Sink Covers
- Deluxe Roller Drawer Guides
- Wood Edge Countertop
- 2 Lights by Sofa\*
- 30# Gas Bottles
- Exterior Shower
- Pillows for Sofa
- Skylight over Tub
- Bathroom Accessories
- Gold & Silver Faucets & Cabinet Hardware
- Fluorescent Light over Kitchen Sink
- Porch Light on ODS & Hitch Light
- Smoke Detector & LP Detector
- Chrome Rings & Caps
- Raised Oak Mortise & Tenon Overhead Cabinet Doors
- 6 Gallon Gas/Electric DSI Water Heater with Winter Bypass Kit
- 40 Gallon Fresh Water Tank\*
- Tub Surround

\*Where applicable and codes allow. Note: Some standard features may be cancelled or altered at dealer's request. Features available on early 2004 models may vary.

## STANDARD CONSTRUCTION FEATURES

### FLOOR

- Puncture, Tear & Weather Resistant Underbelly
- 2x3 Floor Joist 16" O.C.
- 5/8" Tongue & Groove Plywood
- Box Tubular Steel Frame or I-Beam
- Fiberglass Insulation R7

### ROOF CONSTRUCTION

- Fiberglass Insulation R7
- Luan Paneling
- 2x3 Tapered Rafters
- 3/8" Decking
- One Piece Royal Tuff-Ply Roof (12 Year Warranty)

### SIDEWALL CONSTRUCTION

- 2x2 Studs 16" O.C.
- .024 MESA Metal
- Fiberglass Insulation (R7)
- Luan Paneling

## POPULAR OPTIONAL EQUIPMENT

- Ducted A/C (23' models and up)
- Fantastic Vent
- Shower Door
- Foot Flush Toilet
- Assist Grab Handle
- Battery and Box
- Straight Axles
- Spare Tire
- Spare Tire Carrier
- Spare Tire Cover
- 15" Tires
- Chrome Bumper Cover (N/A on QS)
- Tinted/Safety Windows
- Power Jack
- Stabilizer Jacks (2 or 4)



# Sportsmen



## **SPORTSMEN 2004**

Treat yourself to the finest in design and quality construction for your comfort and lifestyle.

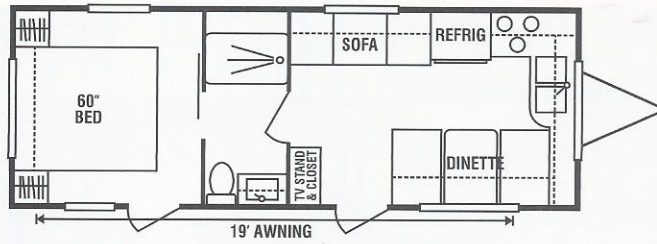
K-Z, Inc. always strives to give you the BEST VALUE for your dollar.

# SPORTSMEN TRAVEL TRAILERS

SP

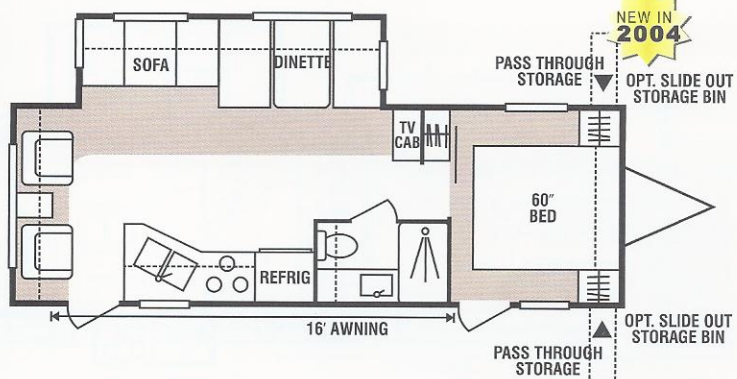
## 2503

UVW (Unloaded Vehicle Wt.)	4500	Refrigerator (cu. feet)	6
Dry Hitch Wt.	600	Water Heater Cap. (gal.)	6 G/E*
Dry Axle Wt.	3900	Fresh Water Cap. (gal.)	40
NCC (Net Carrier Capacity)	2368	Waste Water Cap. (gal.)	32
GVWR	6868	Gray Water Cap. (gal.)	32
Interior Height	82"	LP Gas Cap. (lbs.)	60
Exterior Height	119"	Furnace BTU's (1,000's)	20
Exterior Length	26'3"	Tire Size	15"
Exterior Width	96"		*DSI waterheater



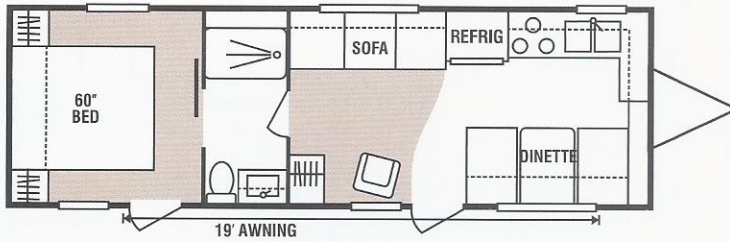
## 2604P - options 4 & 5

UVW (Unloaded Vehicle Wt.)	5960	Refrigerator (cu. feet)	6
Dry Hitch Wt.	780	Water Heater Cap. (gal.)	6 G/E*
Dry Axle Wt.	5180	Fresh Water Cap. (gal.)	40
NCC (Net Carrier Capacity)	4040	Waste Water Cap. (gal.)	32
GVWR	10000	Gray Water Cap. (gal.)	32
Interior Height	82"	LP Gas Cap. (lbs.)	60
Exterior Height	129"	Furnace BTU's (1,000's)	25
Exterior Length	28'9"	Tire Size	15"
Exterior Width	96"		*DSI waterheater



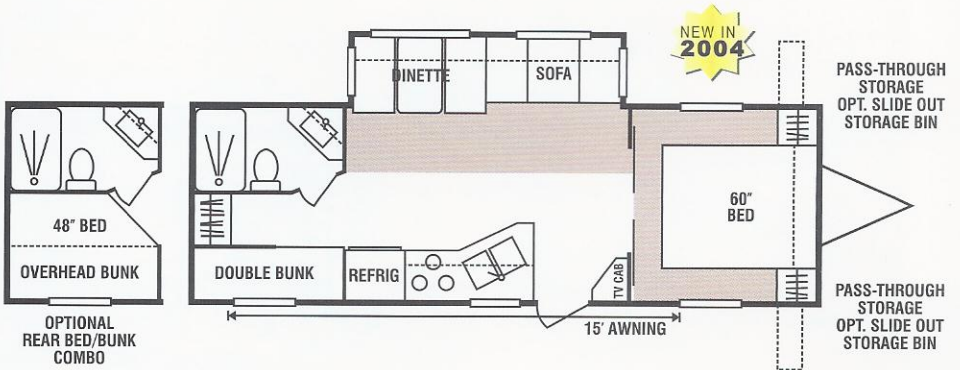
## 2803

UVW (Unloaded Vehicle Wt.)	4900	Refrigerator (cu. feet)	6
Dry Hitch Wt.	760	Water Heater Cap. (gal.)	6 G/E*
Dry Axle Wt.	4140	Fresh Water Cap. (gal.)	40
NCC (Net Carrier Capacity)	2860	Waste Water Cap. (gal.)	32
GVWR	7760	Gray Water Cap. (gal.)	32
Interior Height	82"	LP Gas Cap. (lbs.)	60
Exterior Height	119"	Furnace BTU's (1,000's)	25
Exterior Length	29'6"	Tire Size	15"
Exterior Width	96"		*DSI waterheater



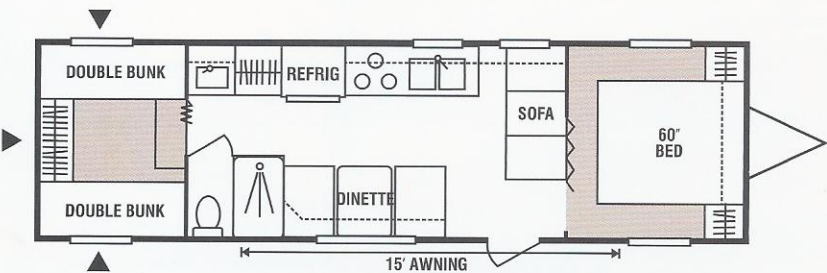
## 2903P - options Rear Bed/Bunk, 4 & 5

UVW (Unloaded Vehicle Wt.)	6080	Refrigerator (cu. feet)	6
Dry Hitch Wt.	580	Water Heater Cap. (gal.)	6 G/E*
Dry Axle Wt.	5500	Water Cap. (gal.)	40
NCC (Net Carrier Capacity)	3920	Waste Water Cap. (gal.)	32
GVWR	10000	Gray Water Cap. (gal.)	32
Interior Height	82"	LP Gas Cap. (lbs.)	60
Exterior Height	129"	Furnace BTU's (1,000's)	25
Exterior Length	29'11"	Tire Size	15"
Exterior Width	96"		*DSI waterheater



## 3004SS

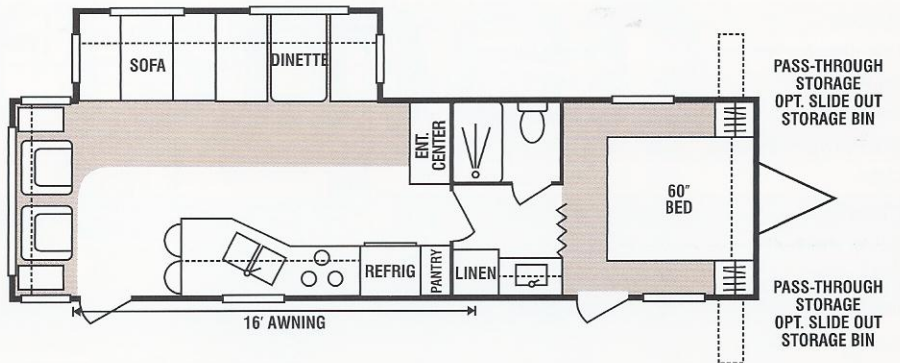
UVW (Unloaded Vehicle Wt.)	5060	Refrigerator (cu. feet)	6
Dry Hitch Wt.	720	Water Heater Cap. (gal.)	6 G/E*
Dry Axle Wt.	4340	Water Cap. (gal.)	40
NCC (Net Carrier Capacity)	2660	Waste Water Cap. (gal.)	32
GVWR	7720	Gray Water Cap. (gal.)	32
Interior Height	82"	LP Gas Cap. (lbs.)	60
Exterior Height	119"	Furnace BTU's (1,000's)	25
Exterior Length	31'11"	Tire Size	15"
Exterior Width	96"		*DSI waterheater



# SPORTSMEN TRAVEL TRAILERS

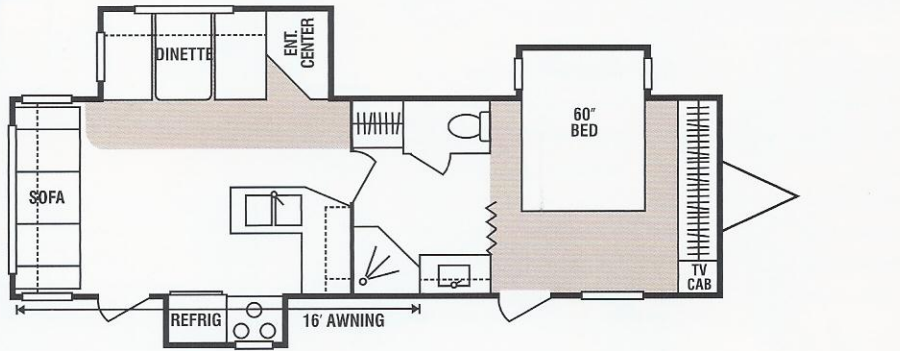
## 3103P - options 4 & 5

UVW (Unloaded Vehicle Wt.)	6850	Refrigerator (cu. feet)	6
Dry Hitch Wt.	860	Water Heater Cap. (gal.)	6 G/E*
Dry Axle Wt.	5990	Water Cap. (gal.)	40
NCC (Net Carrier Capacity)	3150	Waste Water Cap. (gal.)	32
GVWR	10000	Gray Water Cap. (gal.)	32
Interior Height	82"	LP Gas Cap. (lbs.)	60
Exterior Height	299"	Furnace BTU's (1,000's)	30
Exterior Length	324"	Tire Size	15"
Exterior Width	96"		*DSI waterheater



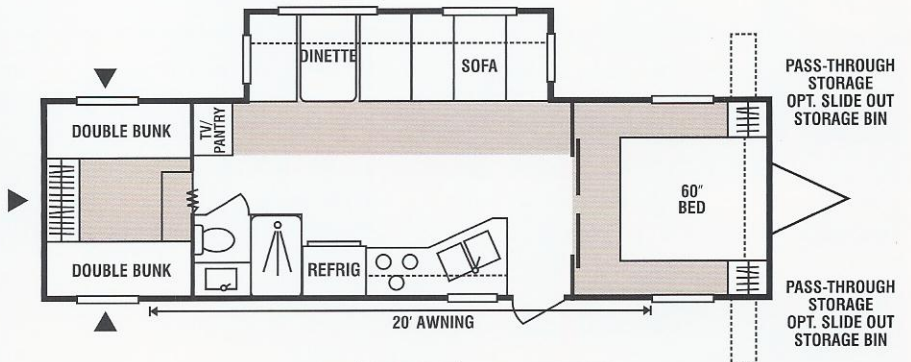
## 3105Px3 - option 4

UVW (Unloaded Vehicle Wt.)	7490	Refrigerator (cu. feet)	6
Dry Hitch Wt.	1220	Water Heater Cap. (gal.)	6 G/E*
Dry Axle Wt.	6270	Water Cap. (gal.)	40
NCC (Net Carrier Capacity)	3510	Waste Water Cap. (gal.)	32
GVWR	11000	Gray Water Cap. (gal.)	32
Interior Height	82"	LP Gas Cap. (lbs.)	60
Exterior Height	129"	Furnace BTU's (1,000's)	30
Exterior Length	321"	Tire Size	15"
Exterior Width	96"		*DSI waterheater



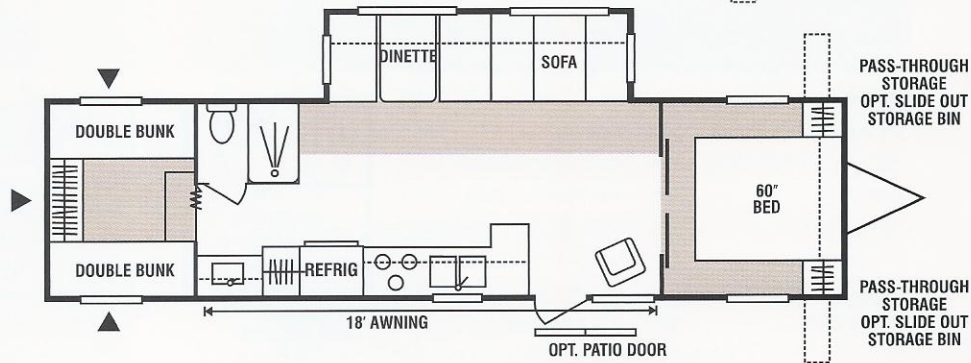
## 3204PSS - options 4 & 5

UVW (Unloaded Vehicle Wt.)	6880	Refrigerator (cu. feet)	6
Dry Hitch Wt.	660	Water Heater Cap. (gal.)	6 G/E*
Dry Axle Wt.	6220	Water Cap. (gal.)	40
NCC (Net Carrier Capacity)	3120	Waste Water Cap. (gal.)	32
GVWR	10000	Gray Water Cap. (gal.)	32
Interior Height	82"	LP Gas Cap. (lbs.)	60
Exterior Height	129"	Furnace BTU's (1,000's)	30
Exterior Length	327"	Tire Size	15"
Exterior Width	96"		*DSI waterheater



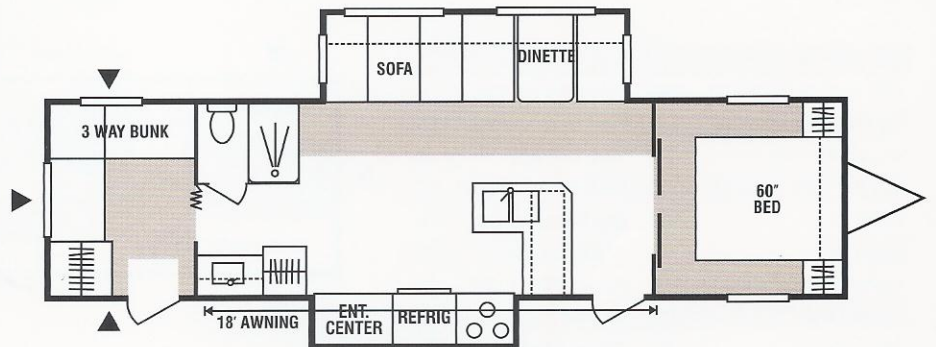
## 3501PSS - options 4, 5 & 8

UVW (Unloaded Vehicle Wt.)	7240	Refrigerator (cu. feet)	6
Dry Hitch Wt.	840	Water Heater Cap. (gal.)	6 G/E*
Dry Axle Wt.	6400	Water Cap. (gal.)	40
NCC (Net Carrier Capacity)	2760	Waste Water Cap. (gal.)	32
GVWR	10000	Gray Water Cap. (gal.)	32
Interior Height	82"	LP Gas Cap. (lbs.)	60
Exterior Height	129"	Furnace BTU's (1,000's)	30
Exterior Length	35'6"	Tire Size	15"
Exterior Width	96"		*DSI waterheater



## 3501Px2 - options 4 & 5

UVW (Unloaded Vehicle Wt.)	7740	Refrigerator (cu. feet)	6
Dry Hitch Wt.	840	Water Heater Cap. (gal.)	6 G/E*
Dry Axle Wt.	6900	Water Cap. (gal.)	40
NCC (Net Carrier Capacity)	2260	Waste Water Cap. (gal.)	32
GVWR	10000	Gray Water Cap. (gal.)	32
Interior Height	82"	LP Gas Cap. (lbs.)	60
Exterior Height	129"	Furnace BTU's (1,000's)	30
Exterior Length	35'6"	Tire Size	15"
Exterior Width	96"		*DSI waterheater

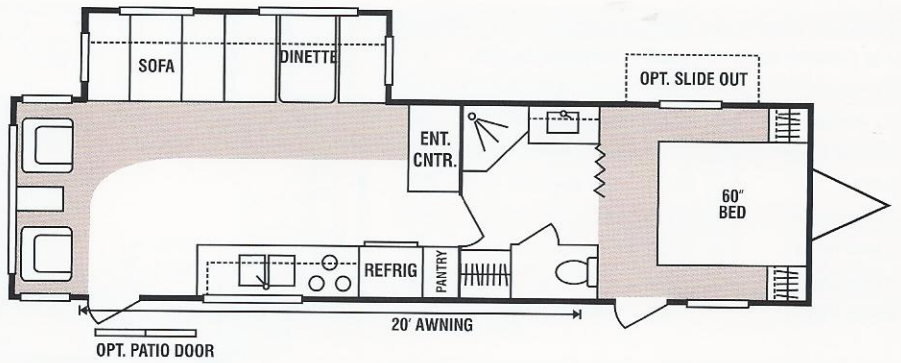


# SPORTSMEN TRAVEL TRAILERS

SP

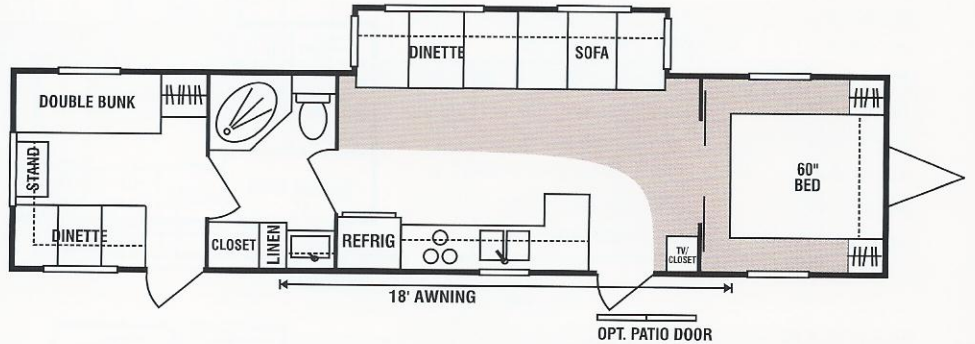
## 3513P - options 4 & 5

UVW (Unloaded Vehicle Wt.)	7500	Refrigerator (cu. feet)	6
Dry Hitch Wt.	540	Water Heater Cap. (gal.)	6 G/E*
Dry Axle Wt.	6960	Water Cap. (gal.)	40
NCC (Net Carrier Capacity)	2500	Waste Water Cap. (gal.)	32
GVWR	10000	Gray Water Cap. (gal.)	32
Interior Height	82"	LP Gas Cap. (lbs.)	60
Exterior Height	129"	Furnace BTU's (1,000's)	30
Exterior Length	35'6"	Tire Size	15"
Exterior Width	96"		*DSI waterheater



## 3803P - options 4, 5 & 8

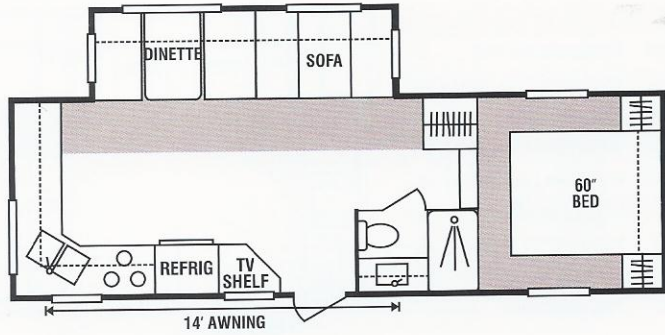
UVW (Unloaded Vehicle Wt.)	7780	Refrigerator (cu. feet)	6
Dry Hitch Wt.	1100	Water Heater Cap. (gal.)	6 G/E*
Dry Axle Wt.	6680	Water Cap. (gal.)	40
NCC (Net Carrier Capacity)	2220	Waste Water Cap. (gal.)	32
GVWR	10000	Gray Water Cap. (gal.)	32
Interior Height	82"	LP Gas Cap. (lbs.)	60
Exterior Height	129"	Furnace BTU's (1,000's)	30
Exterior Length	38'8"	Tire Size	15"
Exterior Width	96"		*DSI waterheater



# SPORTSMEN FIFTH WHEELS®

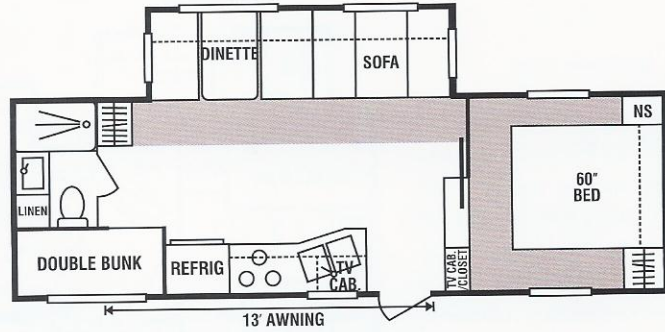
## 2452P - option 4 Medium Profile

UVW (Unloaded Vehicle Wt.)	6500	Refrigerator (cu. feet)	6
Dry Hitch Wt.	1380	Water Heater Cap. (gal.)	6 G/E*
Dry Axle Wt.	5120	Water Cap. (gal.)	55
NCC (Net Carrier Capacity)	3500	Waste Water Cap. (gal.)	32
GVWR	10000	Gray Water Cap. (gal.)	32
Interior Height	82"	LP Gas Cap. (lbs.)	60
Exterior Height	136"	Furnace BTU's (1,000's)	25
Exterior Length	26'5"	Tire Size	15"
Exterior Width	96"	*DSI waterheater	



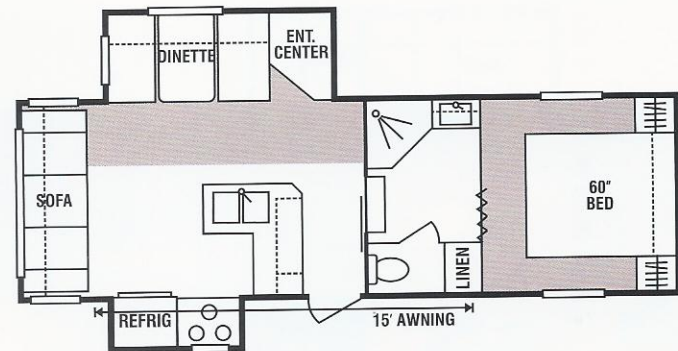
## 2454P - option 4 & 5 Medium Profile

UVW (Unloaded Vehicle Wt.)	6460	Refrigerator (cu. feet)	6
Dry Hitch Wt.	1260	Water Heater Cap. (gal.)	6 G/E*
Dry Axle Wt.	5200	Water Cap. (gal.)	55
NCC (Net Carrier Capacity)	3540	Waste Water Cap. (gal.)	32
GVWR	10000	Gray Water Cap. (gal.)	32
Interior Height	82"	LP Gas Cap. (lbs.)	60
Exterior Height	136"	Furnace BTU's (1,000's)	25
Exterior Length	26'6"	Tire Size	15"
Exterior Width	96"	*DSI waterheater	



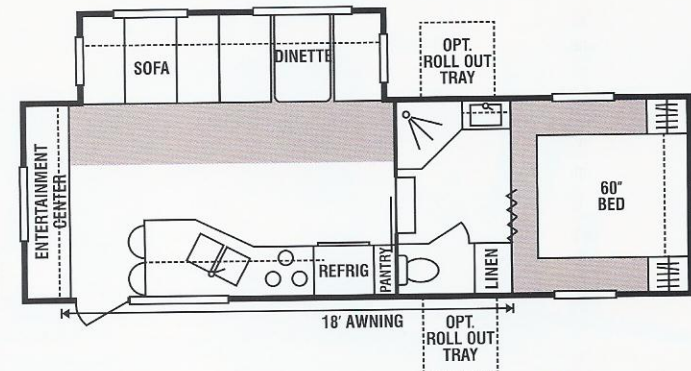
## 2457Px2 - option 4 Medium Profile

UVW (Unloaded Vehicle Wt.)	7220	Refrigerator (cu. feet)	6
Dry Hitch Wt.	1380	Water Heater Cap. (gal.)	6 G/E*
Dry Axle Wt.	5840	Water Cap. (gal.)	55
NCC (Net Carrier Capacity)	2730	Waste Water Cap. (gal.)	32
GVWR	10000	Gray Water Cap. (gal.)	50
Interior Height	82"	LP Gas Cap. (lbs.)	60
Exterior Height	136"	Furnace BTU's (1,000's)	25
Exterior Length	26'8"	Tire Size	15"
Exterior Width	96"	*DSI waterheater	



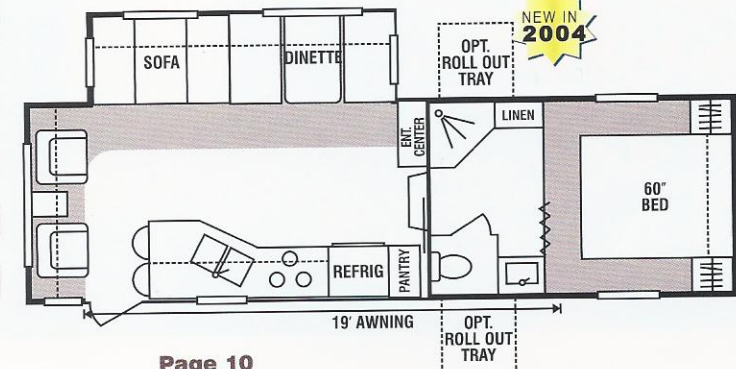
## 2653P - options 4 & 5 Medium Profile

UVW (Unloaded Vehicle Wt.)	6740	Refrigerator (cu. feet)	6
Dry Hitch Wt.	1480	Water Heater Cap. (gal.)	6 G/E*
Dry Axle Wt.	5260	Water Cap. (gal.)	55
NCC (Net Carrier Capacity)	3260	Waste Water Cap. (gal.)	32
GVWR	10000	Gray Water Cap. (gal.)	50
Interior Height	82"	LP Gas Cap. (lbs.)	60
Exterior Height	136"	Furnace BTU's (1,000's)	25
Exterior Length	27'	Tire Size	15"
Exterior Width	96"	*DSI waterheater	



## 2852P - options 4, 5 & 6 S.U. or Med. Profile

UVW (Unloaded Vehicle Wt.)	7490	Refrigerator (cu. feet)	6
Dry Hitch Wt.	1100	Water Heater Cap. (gal.)	6 G/E*
Dry Axle Wt.	6390	Water Cap. (gal.)	55
NCC (Net Carrier Capacity)	4410	Waste Water Cap. (gal.)	32
GVWR	11900	Gray Water Cap. (gal.)	50
Interior Height	82"	LP Gas Cap. (lbs.)	60
Exterior Height	146"	Furnace BTU's (1,000's)	25
Exterior Length	30'1"	Tire Size	15"
Exterior Width	96"	*DSI waterheater	

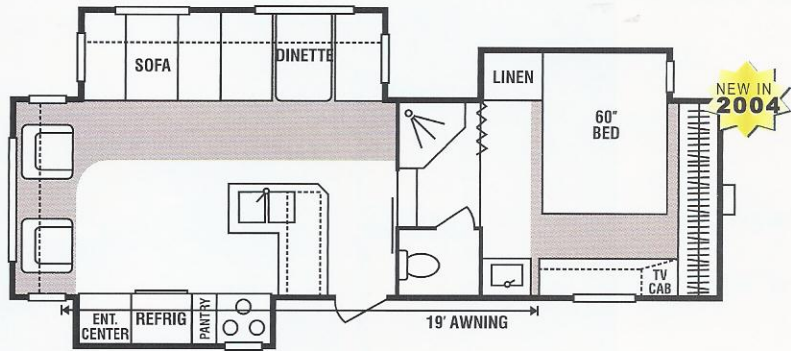


# SPORTSMEN FIFTH WHEELS

SP

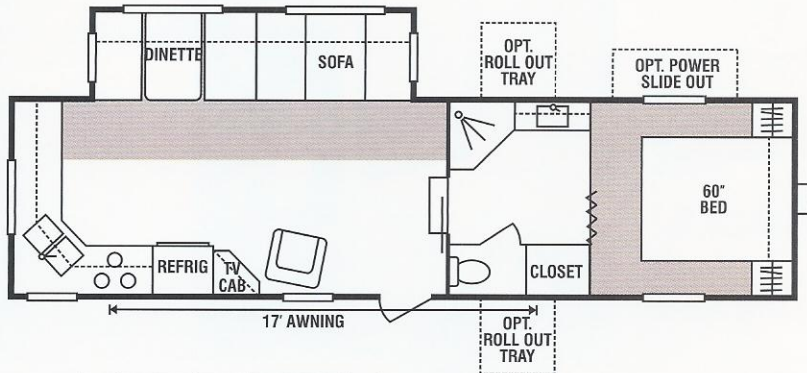
## 2857Px3 options 4 & 5 S.U. Profile

UVW (Unloaded Vehicle Wt.)	8240	Refrigerator (cu. feet)	6
Dry Hitch Wt.	1620	Water Heater Cap. (gal.)	6 G/E*
Dry Axle Wt.	6620	Water Cap. (gal.)	55
NCC (Net Carrier Capacity)	3660	Waste Water Cap. (gal.)	32
GVWR	11900	Gray Water Cap. (gal.)	50
Interior Height	82"	LP Gas Cap. (lbs.)	60
Exterior Height	146"	Furnace BTU's (1,000's)	25
Exterior Length	28'8"	Tire Size	15"
Exterior Width	96"	*DSI waterheater	



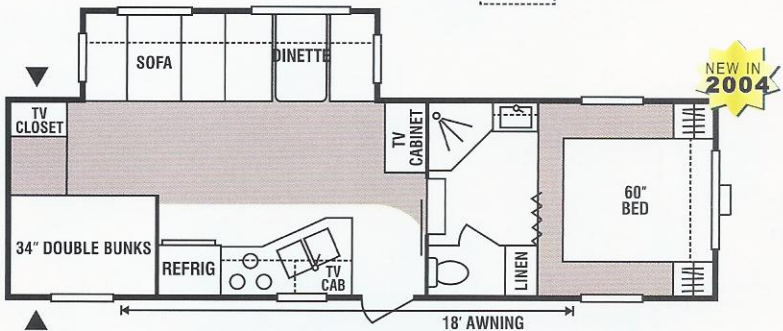
## 3051P options 4, 5 & 6 S.U. Profile

UVW (Unloaded Vehicle Wt.)	7920	Refrigerator (cu. feet)	6
Dry Hitch Wt.	1420	Water Heater Cap. (gal.)	6 G/E*
Dry Axle Wt.	6500	Water Cap. (gal.)	55
NCC (Net Carrier Capacity)	3820	Waste Water Cap. (gal.)	32
GVWR	11740	Gray Water Cap. (gal.)	50
Interior Height	82"	LP Gas Cap. (lbs.)	60
Exterior Height	146"	Furnace BTU's (1,000's)	25
Exterior Length	31'3"	Tire Size	15"
Exterior Width	96"	*DSI waterheater	



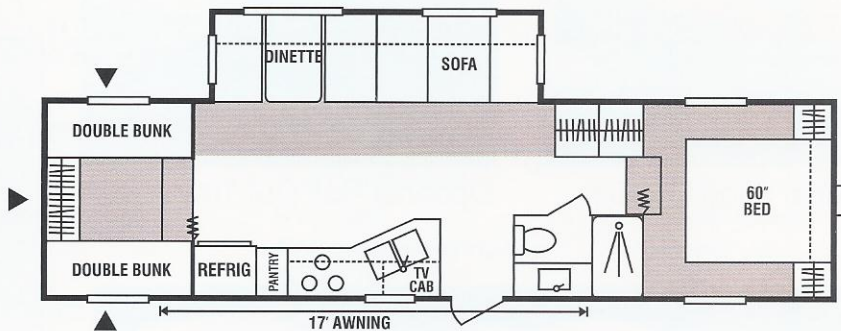
## 3059P options 4, 5 & 6 S.U. Profile

UVW (Unloaded Vehicle Wt.)	7840	Refrigerator (cu. feet)	6
Dry Hitch Wt.	1900	Water Heater Cap. (gal.)	6 G/E*
Dry Axle Wt.	5720	Water Cap. (gal.)	55
NCC (Net Carrier Capacity)	4060	Waste Water Cap. (gal.)	32
GVWR	11900	Gray Water Cap. (gal.)	50
Interior Height	78"+	LP Gas Cap. (lbs.)	60
Exterior Height	142"	Furnace BTU's (1,000's)	25
Exterior Length	28'8"	Tire Size	15"
Exterior Width	96"	*DSI waterheater	



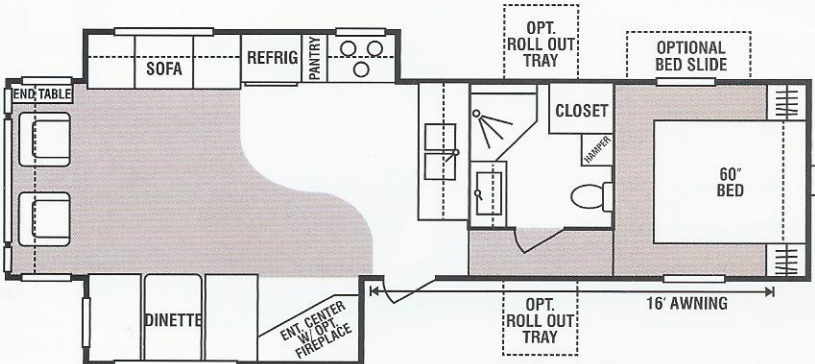
## 3156PSS option 4 Medium Profile

UVW (Unloaded Vehicle Wt.)	6800	Refrigerator (cu. feet)	6
Dry Hitch Wt.	1200	Water Heater Cap. (gal.)	6 G/E*
Dry Axle Wt.	5600	Water Cap. (gal.)	55
NCC (Net Carrier Capacity)	3200	Waste Water Cap. (gal.)	32
GVWR	10000	Gray Water Cap. (gal.)	50
Interior Height	82"	LP Gas Cap. (lbs.)	60
Exterior Height	136"	Furnace BTU's (1,000's)	25
Exterior Length	32'10"	Tire Size	15"
Exterior Width	96"	*DSI waterheater	



## 3354Px2 options 4, 5 & 6 S.U. Profile

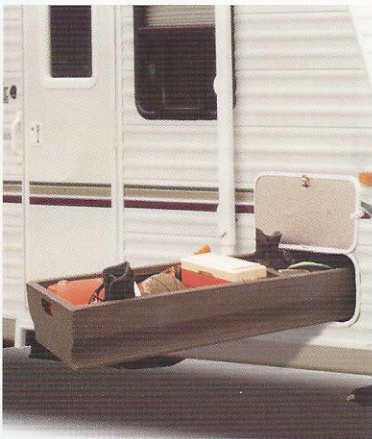
UVW (Unloaded Vehicle Wt.)	9040	Refrigerator (cu. feet)	6
Dry Hitch Wt.	1880	Water Heater Cap. (gal.)	6 G/E*
Dry Axle Wt.	7160	Water Cap. (gal.)	55
NCC (Net Carrier Capacity)	2960	Waste Water Cap. (gal.)	32
GVWR	12000	Gray Water Cap. (gal.)	50
Interior Height	82"	LP Gas Cap. (lbs.)	60
Exterior Height	146"	Furnace BTU's (1,000's)	25
Exterior Length	33'9"	Tire Size	15"
Exterior Width	96"	*DSI waterheater	





## ROOM TO BREATHE

When looking for maximum storage and easy-access storage options, look no further. We take the stress out of RVing - so relax and enjoy the way RVing is meant to be.



Optional Slide Out Bin



Optional Roll Out Tray



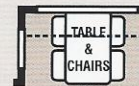
Standard Metal Sided Exterior

## Floorplan Options

Custom tailor your Sportsmen Travel Trailer or Fifth Wheel by selecting from these options.



OPTION 8 - REAR TRIPLE BUNK BEDROOM



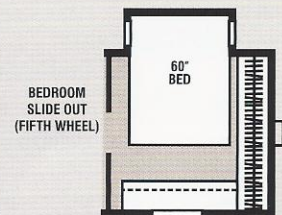
OPTION 4



OPTION 5



OPTION 6

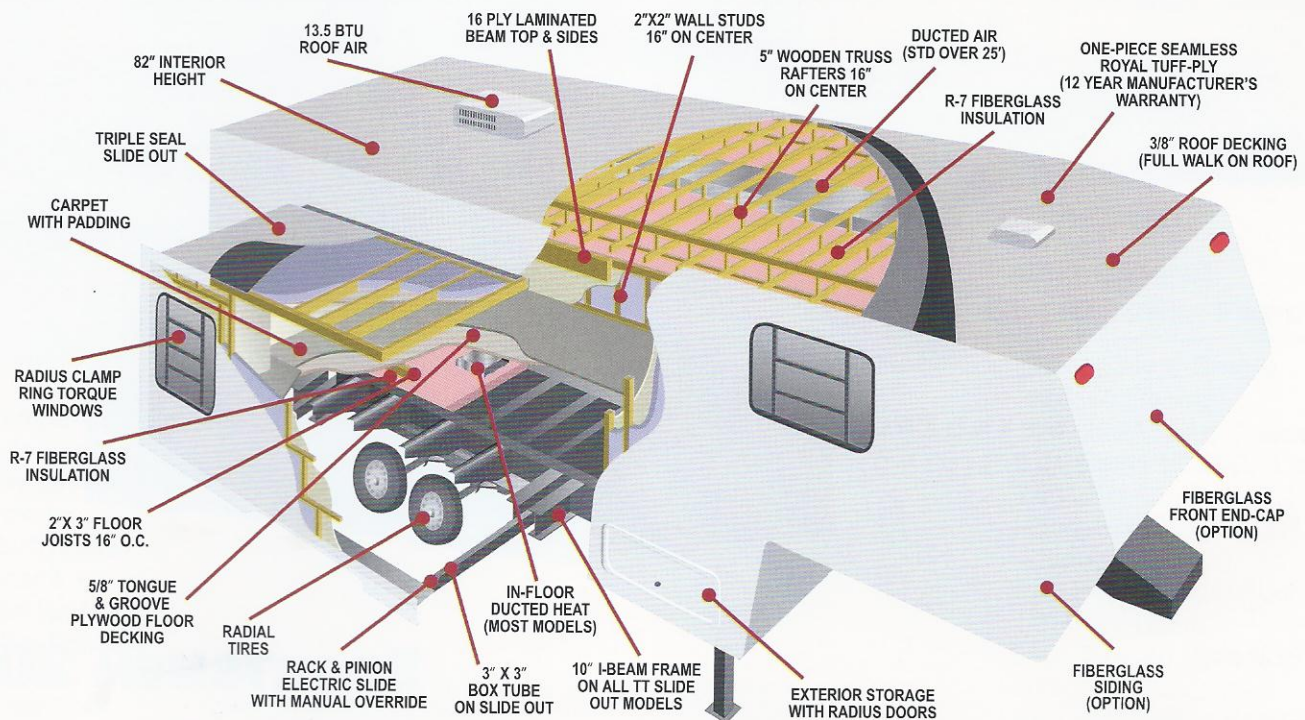


BEDROOM SLIDE OUT (FIFTH WHEEL)

## TRAVEL TRAILERS & FIFTH WHEEL STANDARD FEATURES

- AM/FM CD Player w/ 4 Speakers
- 13,500 BTU A/C (Ducted standard in 26' Models and up)
- Awning
- OTR Microwave\*
- Pillows for Sofa\*
- Oven
- 6 CU Refrigerator
- TV Shelf in Bedroom
- Cable Hook Up
- Tub Surround
- Night Shades\*
- Mirrored Doors in Slideouts\*
- Acrylic White Sink w/ High Rise Faucet
- Raised Oak Mortise & Tenon Overhead Cabinet Doors
- Deluxe Roller Drawer Guides
- 2 Lights by Sofa
- Deluxe Globe Dinette Light
- Fluorescent Light over Kitchen Sink
- Wood Edge Countertop
- 1 Sink Cover
- Skylight over Tub
- Gold & Silver Faucets & Cabinet Hardware
- Porch Light on ODS
- Hitch Light
- Smoke Detector
- LP Detector
- Chrome Rings & Caps
- 6 Gallon Gas/Electric Water Heater
- Exterior Shower
- 40+ Gallon Fresh Water Tank\*

## STANDARD CONSTRUCTION FEATURES



## TRAVEL TRAILERS & FIFTH WHEEL OPTIONAL EQUIPMENT

- Fiberglass Exterior w/ Front End Caps (adds approximately 10% to overall unit weight)
- Black Water Tank Flush
- 15,000 BTU Air Conditioner
- Hide-A-Bed\*
- Recliner\*
- Table & 4 Chairs
- Pull Out Pantry\*
- RVQ Grill
- Tinted/Safety Windows
- Spare Tire
- Spare Tire Carrier
- Spare Tire Cover
- Stove Cover
- Power Jack

## OPTION PACKAGE A - OUR MOST POPULAR OPTIONS COMBINED INTO ONE SPECIAL PACKAGE

- 8 CU Refrigerator w/ Solid Refrigerator Panels
- Sink Covers
- Stove Cover
- Posterest Mattress
- Shower Door
- Foot Flush Toilet
- Assist Grab Handle
- R14 Roof Insulation
- 40" Trunk Door in PSO\*
- Slider Windows in PSO\*
- Fantastic Vent
- Bathroom Accessories
- Stabilizer Jacks
- Ladder
- Shocks
- Security Lights
- Chrome Bumper Cover

\* Where applicable and codes allow. Features available on early 2004 models may vary. Some Standard Features may be cancelled or altered at dealer's request.

# Sportsmen



STANDARD  
METAL SIDING

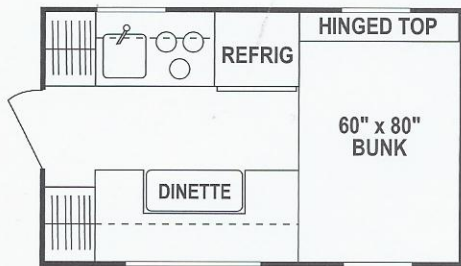
## SPORTSMEN 2004 TRUCK CAMPERS



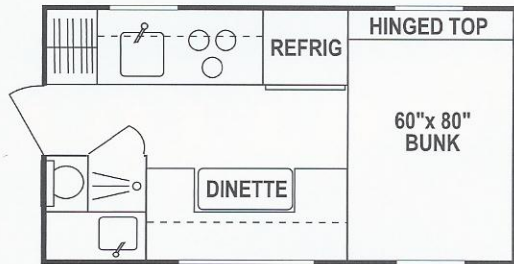
OPTIONAL  
FIBERGLASS SIDING

# SPORTSMEN TRUCK CAMPERS

TTC



801			
UVW (Unloaded Vehicle Wt.)	1600	Water Heater Cap. (gal.)	N/A
Interior Height	78"	Water Cap. (gal)	20
Exterior Width	94"	Waste Water Cap. (gal.)	N/A
Exterior Length	8'	Gray Water Cap. (gal.)	N/A
Exterior Height**	85"	LP Gas Cap. (lbs.)	40
Refrigerator (cubic feet)	2.7		



951			
UVW (Unloaded Vehicle Wt.)	1960	Water Heater Cap. (gal.)	6
Interior Height	78"	Water Cap. (gal)	20
Exterior Width	94"	Waste Water Cap. (gal.)	6
Exterior Length	9' 5"	Gray Water Cap. (gal.)	6
Exterior Height**	85"	LP Gas Cap. (lbs.)	40
Refrigerator (cubic feet)	3.5		

\* Limited Models (all fiberglass) adds approximately 10% to total weight. Some Standard Features may be cancelled or altered at dealer's request. Features available on early 2004 models may vary.

\*\* Exterior Height does NOT include air conditioner.

## TRUCK CAMPER STANDARD FEATURES

- 3 Camper Jacks
- Single Door Refrigerator
- 12,000 BTU Heater
- Converter
- Slider Window
- Ladder & Rack
- Wired for AC
- Radius Window
- Double 20 lb. Gas Bottles
- Rubber Roof

## TRUCK CAMPER POPULAR OPTIONS

- 4 Corner Screw Jacks
- 7,000 BTU Air Conditioner
- Oven
- Cabinet Bunk
- Toilet (801 Model)

## TRUCK CAMPER CONSTRUCTION FEATURES

- 5/8" Tongue & Groove Plywood Floors
- .024 MESA Metal Sidewalls
- 2 x 2 Studs 16" O.C. & closer
- 3.6 LUAN Paneling
- Fiberglass Insulation R7 (Sidewalls & Roof)
- One Piece Rubber Roof w/ 3/8" Deck Board
- 2 x 3 Tapered Rafters 16" O.C.
- 3.6 LUAN Ceiling Board

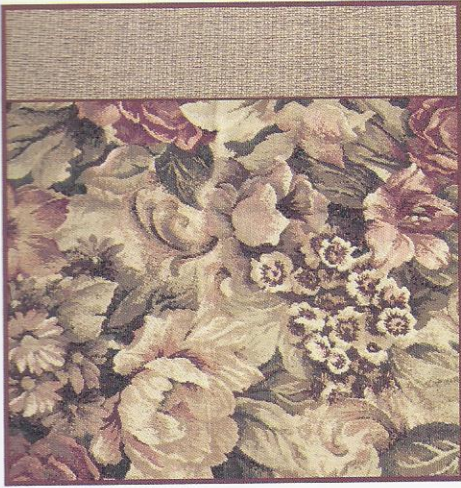


## HERE FOR THE LONG HAUL . . .

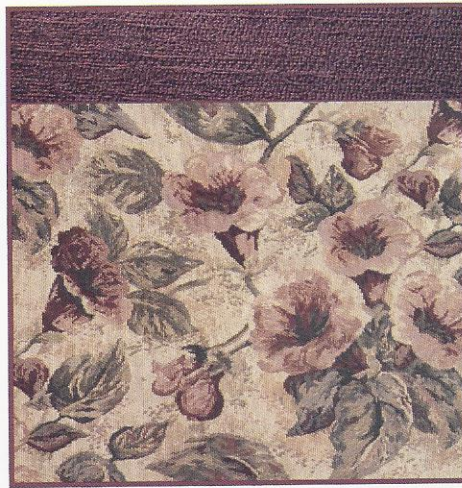
For over 32 years we've been earning our reputation as an outstanding recreational vehicle manufacturer - largely through our commitment to quality and our attention to meeting unique needs of customers like you.

## . . . AND GOING STRONG

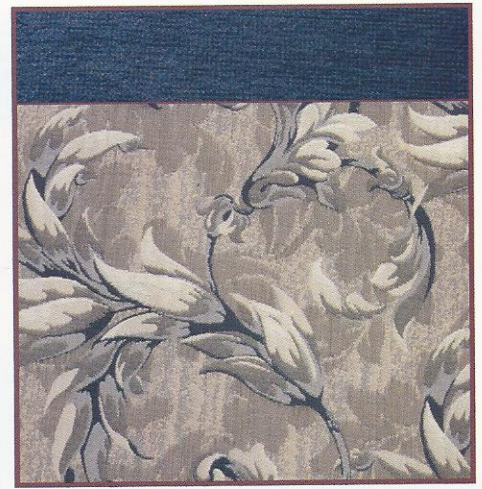
Every manufacturer should be proud of their product. We are. As a matter of fact, we believe in our construction techniques strongly enough to offer you our 2 year structural warranty. We want to earn your business.



**GREEN**



**WINE**



**NAVY**

**2x2 Warranty** – The K-Z 2x2 Warranty is a manufacturer's warranty. Each K-Z product is warranted to the original purchaser for twenty-four (24) months from the original date of purchase. Coverage includes appliances, components, construction and FULL structure.

Our warranty is also transferable within the first two (2) years for a small processing fee. For a copy of the warranty with full terms and conditions, ask your local K-Z Dealer or visit our web site at <http://www.kz-rv.com>.

**Vehicle Loading** – Every effort has been made to provide the greatest number of options for the recreational owner. Each owner is responsible to select loads allowing the recreational vehicle to remain within the manufacturer's specified chassis weight limits. Do not overload the recreational vehicle.

**Dry Weights** are based on standard features only and do not include optional equipment. Carrying capacity is determined by subtracting UVW from GVWR and includes fluids, options and cargo. Liquid capacities and weights are approximations only.

**NOTE:** This information is intended as a guide only. Weights of individual vehicles are approximate. Consult your Owner's Manual for complete loading, weighing & towing instructions.



# Sportsmen

Dealer:

**K-Z Incorporated**  
9270 West U.S. 20  
Shipshewana, IN 46565  
E-Mail [kz@kz-rv.com](mailto:kz@kz-rv.com)  
[www.kz-rv.com](http://www.kz-rv.com)

**Jerry's Trailers & Campers**  
2601 South 13th St.  
Norfolk, NE 68701  
(402) 371-1306

*Plant Location: 1 Mile West of S.R. 5 on U.S. 20*

*Due to continued research and advances, manufacturer reserves the right to change specifications, design, price and equipment without notice, and assumes no responsibility for any error in this literature.*