

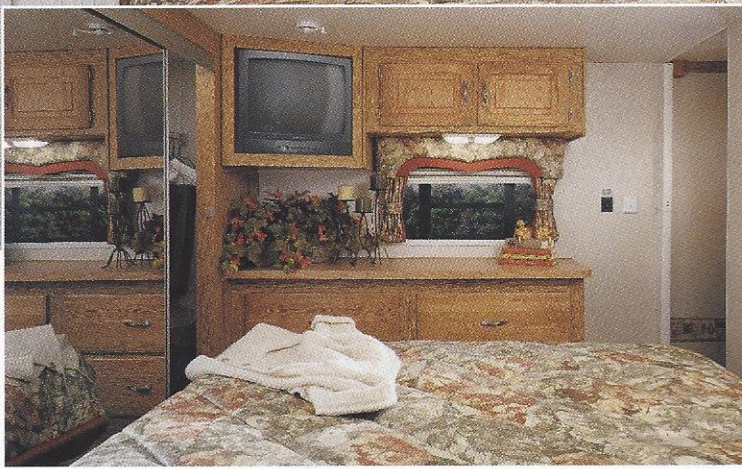
New Vision

by K-Z





Travel is made easy when the comforts of home are conveniently within reach.

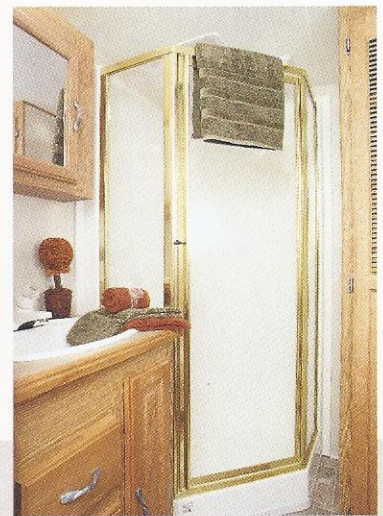


Vanity cabinets offer counter space as well as overhead storage with television shelf.

A Peaceful Retreat

You'll discover plenty of wardrobe and storage space concealed behind mirrored gliding doors and beautiful oak-finished bedroom vanity cabinets.

Beautiful oak-finish cabinetry is featured in our efficiently designed baths.



Standard Equipment

- Flush Floors
- 6 gal. DSI Water Heater
- Armstrong Residential Linoleum (10 yr warranty)
- Straight Roof Line
- Wood Frame Construction
- Deluxe Swivel Rocker
- Solid Oak Refrigerator Panel
- Residential Innerspring Mattress
- Acrylic Sink Cover
- Raised Oak Cabinet Doors w/Mortise and Tenon Joints
- One Piece "Royal Tuff-ply" Roof
- Gas Props on Bed Base
- Water Heater By-Pass Kit
- Double Door Refrigerator
- Glass Shower Door
- Stereo – CD w/Power Amp and Speakers
- 13,500 BTU Ducted Air Conditioner
- TV Antenna w/Booster & Two Jacks
- Awning
- Microwave
- Monitor Panel
- Tinted Windows
- Large 22" Oven
- 30 LB LP Bottles
- Cable Hook Up
- Deluxe Range Hood
- Overhead Cabinets Above Sofa and Dinette in PSO

Optional Equipment

- Roll Out Tray
- Ottoman
- Satellite Dish
- Trash Bin
- TV Slider Swivel Shelf
- Plumb for Washer / Dryer
- Gel Coat Fiberglass
- Pull Out Pantry
- 50 Amp Services
- Aluminum Frame
- Recliner / Glider
- Exterior Shower
- Large Double Door Refrigerator
- Side by Side Refrigerator
- Sun Deck & Ladder
- Free-Standing Oak Table & Four Chairs (as shown in photos)
- Table with Leaf
- 15,000 BTU Air Conditioner
- DVD Home Entertainment Center w/Surround Sound
- Water Filter
- Ice Maker
- Spare Tire
- Hide-A-Bed
- Fantastic Fan
- FlexFoil™ Reflective Insulation
- Skylight Over Shower*
- Laundry hamper*
- Six Gallon Gas / Electric Water Heater*
- R14 Roof Insulation*
- Pleated Day-Night Shades*
- Black Water Tank Flush System*
- Shock Absorbers*
- Heated Holding Tanks*
- Enclosed Underbelly*
- Ceiling Fan*
- Security Lights*
- Stove Cover*
- Power Jacks*
- Stabilizer Jacks*
- Telephone Jack*
- Hi-Rise Faucet*



Optional Ceiling Fan

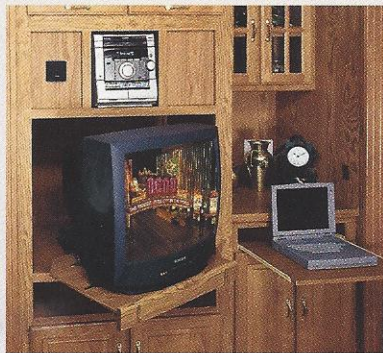
Surround Sound Option



Trash Bin Option



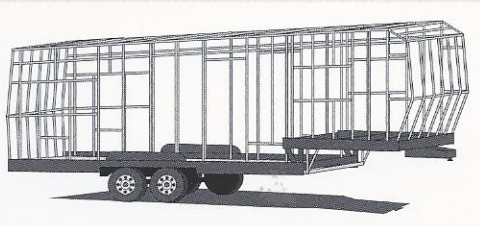
Side by Side Refrigerator Option



Home Entertainment Center with Slider Swivel Shelf



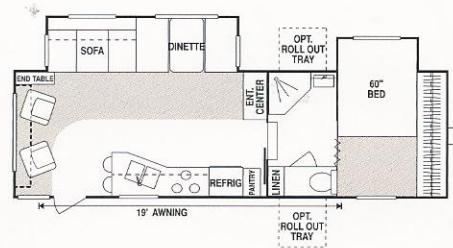
Two Way Roll Out Storage Tray Option



Optional ALL Aluminum Welded Structure

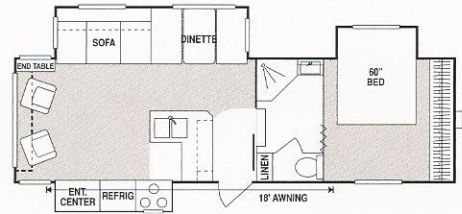
* - Included in a package

2852Px2



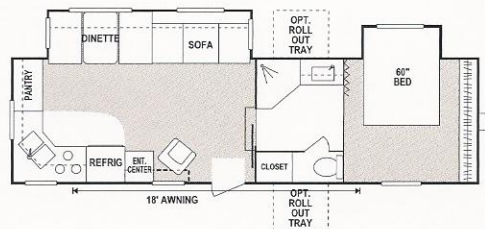
UVW (Unloaded Vehicle Wt.)*	9585	Interior Height	90"	Water Cap. (gal.)	55
Dry Hitch Wt.	1765	Exterior Width	96"	Waste Water Cap. (gal.)	32
Dry Axle Wt.	7820	Exterior Length	317"	Gray Water Cap. (gal.)	50
NCC (Net Carrier Capacity)	4015	Exterior Height	148"	LP Gas Cap. (lbs.)	60
GVWR	136000	Refrigerator	DD	Furnace BTU's (1,000's)	25
		Water Heater Cap. (gal.)	6	Tire Size	15"

2857Px3



UVW (Unloaded Vehicle Wt.)*	9620	Interior Height	90"	Water Cap. (gal.)	55
Dry Hitch Wt.	1900	Exterior Width	96"	Waste Water Cap. (gal.)	32
Dry Axle Wt.	7720	Exterior Length	317"	Gray Water Cap. (gal.)	50
NCC (Net Carrier Capacity)	2280	Exterior Height	148"	LP Gas Cap. (lbs.)	60
GVWR	11900	Refrigerator	DD	Furnace BTU's (1,000's)	25
		Water Heater Cap. (gal.)	6	Tire Size	15"

3051Px2

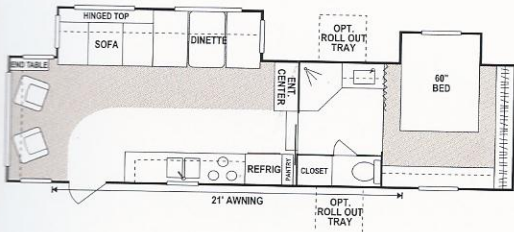


UVW (Unloaded Vehicle Wt.)*	9680	Interior Height	90"	Water Cap. (gal.)	55
Dry Hitch Wt.	2080	Exterior Width	96"	Waste Water Cap. (gal.)	32
Dry Axle Wt.	7258	Exterior Length	32'	Gray Water Cap. (gal.)	50
NCC (Net Carrier Capacity)	2842	Exterior Height	148"	LP Gas Cap. (lbs.)	60
GVWR	11980	Refrigerator	6	Furnace BTU's (1,000's)	30
		Water Heater Cap. (gal.)	6	Tire Size	15"

3158Px3

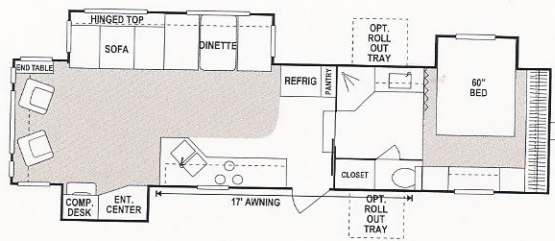


UVW (Unloaded Vehicle Wt.)*	11120	Interior Height	90"	Water Cap. (gal.)	55
Dry Hitch Wt.	2220	Exterior Width	96"	Waste Water Cap. (gal.)	32
Dry Axle Wt.	8900	Exterior Length	32'10"	Gray Water Cap. (gal.)	50
NCC (Net Carrier Capacity)	2760	Exterior Height	148"	LP Gas Cap. (lbs.)	60
GVWR	13880	Refrigerator	6	Furnace BTU's (1,000's)	30
		Water Heater Cap. (gal.)	6	Tire Size	16"

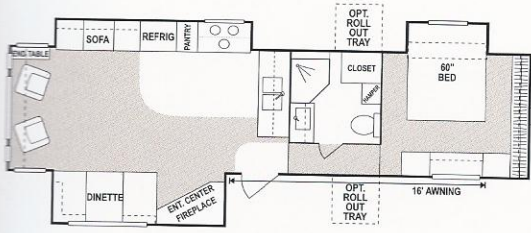


3452Px3

Unloaded Vehicle Wt.)*	9500	Interior Height	90"	Water Cap. (gal)	55
Dry Hitch Wt.	1750	Exterior Width	96"	Waste Water Cap. (gal.)	32
Dry Axle Wt.	7750	Exterior Length	33'	Gray Water Cap. (gal.)	50
Net Carrier Capacity)	3000	Exterior Height	148"	LP Gas Cap. (lbs.)	60
	12500	Refrigerator	6	Furnace BTU's (1,000's)	30
		Water Heater Cap. (gal.)	6	Tire Size	16"

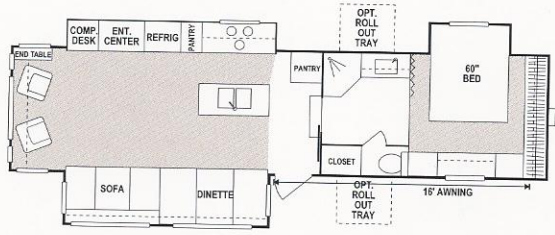


UVW (Unloaded Vehicle Wt.)*	11320	Interior Height	90"	Water Cap. (gal)	55
Dry Hitch Wt.	1920	Exterior Width	96"	Waste Water Cap. (gal.)	32
Dry Axle Wt.	9400	Exterior Length	35'10"	Gray Water Cap. (gal.)	50
NCC (Net Carrier Capacity)	2560	Exterior Height	148"	LP Gas Cap. (lbs.)	60
GVWR	13880	Refrigerator	6	Furnace BTU's (1,000's)	30
		Water Heater Cap. (gal.)	6	Tire Size	16"

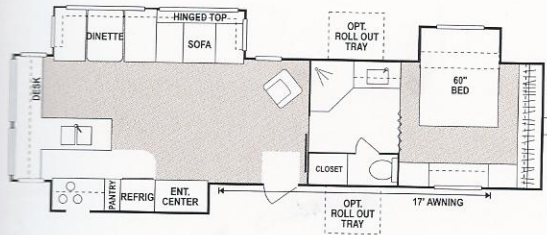


3453Px3

Unloaded Vehicle Wt.)*	11320	Interior Height	90"	Water Cap. (gal)	55
Dry Hitch Wt.	1920	Exterior Width	96"	Waste Water Cap. (gal.)	32
Dry Axle Wt.	9400	Exterior Length	34'7"	Gray Water Cap. (gal.)	50
Net Carrier Capacity)	2560	Exterior Height	148"	LP Gas Cap. (lbs.)	60
	13880	Refrigerator	6	Furnace BTU's (1,000's)	30
		Water Heater Cap. (gal.)	6	Tire Size	16"

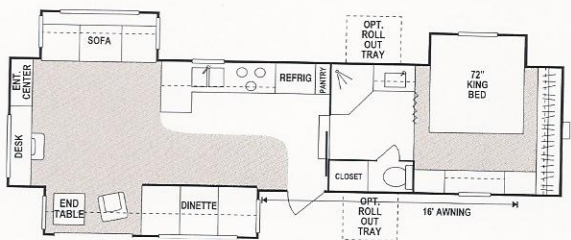


UVW (Unloaded Vehicle Wt.)*	11640	Interior Height	90"	Water Cap. (gal)	55
Dry Hitch Wt.	1880	Exterior Width	96"	Waste Water Cap. (gal.)	32
Dry Axle Wt.	9760	Exterior Length	35'10"	Gray Water Cap. (gal.)	50
NCC (Net Carrier Capacity)	2240	Exterior Height	148"	LP Gas Cap. (lbs.)	60
GVWR	13880	Refrigerator	6	Furnace BTU's (1,000's)	30
		Water Heater Cap. (gal.)	6	Tire Size	16"

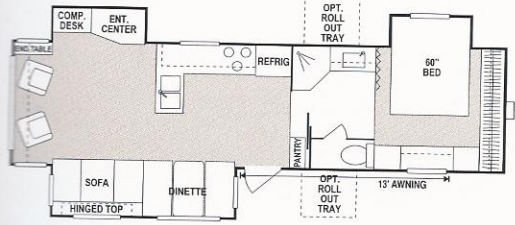


3557Px3

Unloaded Vehicle Wt.)*	10780	Interior Height	90"	Water Cap. (gal)	55
Dry Hitch Wt.	2280	Exterior Width	96"	Waste Water Cap. (gal.)	32
Dry Axle Wt.	8500	Exterior Length	33'	Gray Water Cap. (gal.)	50
Net Carrier Capacity)	3200	Exterior Height	148"	LP Gas Cap. (lbs.)	60
	14000	Refrigerator	6	Furnace BTU's (1,000's)	30
		Water Heater Cap. (gal.)	6	Tire Size	16"

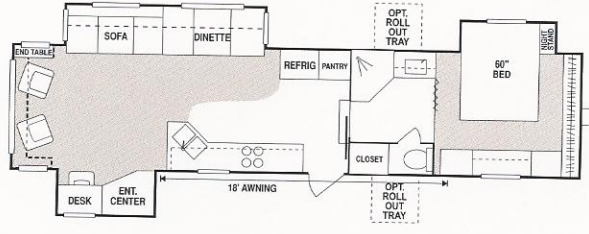


UVW (Unloaded Vehicle Wt.)*	11600	Interior Height	90"	Water Cap. (gal)	55
Dry Hitch Wt.	2200	Exterior Width	96"	Waste Water Cap. (gal.)	32
Dry Axle Wt.	9400	Exterior Length	36'10"	Gray Water Cap. (gal.)	50
NCC (Net Carrier Capacity)	2600	Exterior Height	148"	LP Gas Cap. (lbs.)	60
GVWR	14200	Refrigerator	6	Furnace BTU's (1,000's)	35
		Water Heater Cap. (gal.)	6	Tire Size	16"



3756Px3

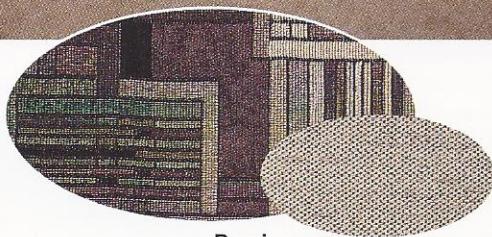
Unloaded Vehicle Wt.)*	10460	Interior Height	90"	Water Cap. (gal)	55
Dry Hitch Wt.	2320	Exterior Width	96"	Waste Water Cap. (gal.)	32
Dry Axle Wt.	8140	Exterior Length	34'	Gray Water Cap. (gal.)	50
Net Carrier Capacity)	3640	Exterior Height	148"	LP Gas Cap. (lbs.)	60
	14100	Refrigerator	6	Furnace BTU's (1,000's)	30
		Water Heater Cap. (gal.)	6	Tire Size	16"



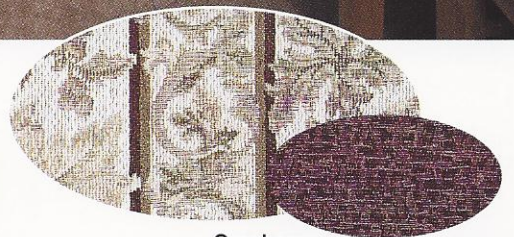
UVW (Unloaded Vehicle Wt.)*	12605	Interior Height	90"	Water Cap. (gal)	55
Dry Hitch Wt.	1710	Exterior Width	96"	Waste Water Cap. (gal.)	32
Dry Axle Wt.	10895	Exterior Length	38'10"	Gray Water Cap. (gal.)	50
NCC (Net Carrier Capacity)	5350	Exterior Height	152"	LP Gas Cap. (lbs.)	60
GVWR	18000	Refrigerator	DD	Furnace BTU's (1,000's)	35
		Water Heater Cap. (gal.)	6	Tire Size	16"



Spice



Domino



Cranberry

Maximize Your Leisure Time

Living and dining area slide-outs generously add to the spacious color coordinated interiors. Designed with your comfort, convenience and satisfaction in mind, K-Z starts by building in quality from the frame on up, then finishing with features of beauty and comfort that you'll appreciate for years to come.

New Vision

by K-Z

2x2 Warranty

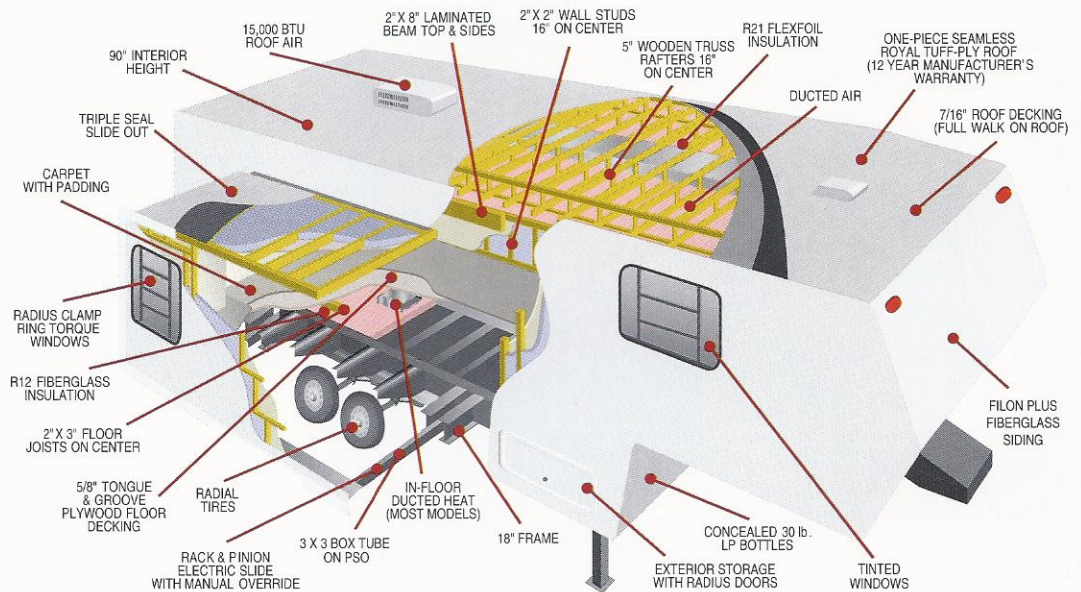
The K-Z 2x2 Warranty is a manufacturer's warranty. Each K-Z product is warranted to the original purchaser for twenty-four (24) months from the original date of purchase. Coverage includes appliances, components, construction and FULL structure.

Our warranty is also transferable within the first two (2) years for a small processing fee. For a copy of the warranty with full terms and conditions, ask your local K-Z dealer or visit our web site at www.kz-rv.com.

Vehicle Loading – Every effort has been made to provide the greatest number of options for the recreational owner. Each owner is responsible to select loads allowing the recreational vehicle to remain within the manufacturer's specified chassis weight limits. Do not overload the recreational vehicle.

Dry Weights are based on standard features only and do not include optional equipment. Carrying capacity is determined by subtracting UVW from GVWR and includes fluids, options and cargo. Liquid capacities and weights are approximations only.

NOTE: This information is intended as a guide only. Weights of individual vehicles are approximate. Consult your Owner's Manual for complete loading, weighing & towing instructions.



K-Z Incorporated

9270 West U.S. 20 • Shipshewana, IN 46565
e-mail kz@kz-rv.com • www.kz-rv.com

Plant Location: 1 Mile West of S.R. 5 on U.S. 20



Dealer: