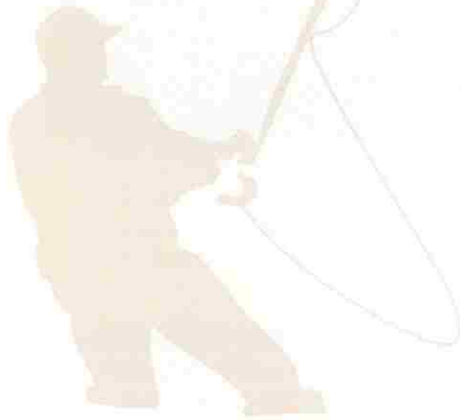




Sportsmen



**FIFTH WHEELS
& TRAVEL TRAILERS**



ULTRA LITES



Building Quality and Fun for over 30 years



ULTRA-LITE 2003

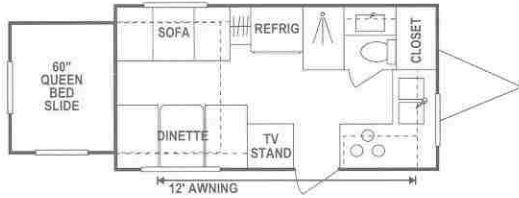
What's so great about the Ultra Lite 2003 anyway? Mom likes the generous storage spaces and what she calls "room to relax." Dad likes that it pulls easily, even with our family vehicle. The kids like it because they can have their own bunks, with plenty of room to bring along all the fun stuff for when they get there.

Ultra-Lite



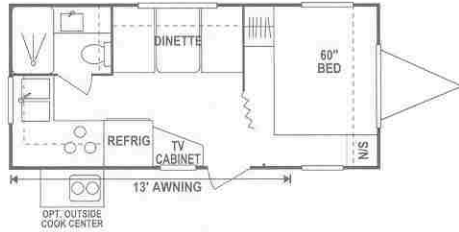
MODEL 2505QSS BUNKHOUSE

SPORTSMEN ULTRA LITE TRAVEL TRAILERS



1702QS

UVW (Unloaded Vehicle Wt.)*	3568	Interior Height	76"	Water Cap. (gal.)	31
Dry Hitch Wt.	500	Exterior Width	94"	Waste Water Cap. (gal.)	32
Dry Axle Wt.	3068	Exterior Length	19'11"	Gray Water Cap. (gal.)	32
NCC (Net Carrier Capacity)	1944	Exterior Height	100"	LP Gas Cap. (lbs.)	40
GVWR	5512	Refrigerator	SD	Furnace BTU's (1,000's)	16
		Water Heater Cap. (gal.)	6	Tire Size	14"



2002

UVW (Unloaded Vehicle Wt.)*	3210	Interior Height	76"	Water Cap. (gal.)	30
Dry Hitch Wt.	380	Exterior Width	94"	Waste Water Cap. (gal.)	32
Dry Axle Wt.	2830	Exterior Length	21'6"	Gray Water Cap. (gal.)	32
NCC (Net Carrier Capacity)	2802	Exterior Height	100"	LP Gas Cap. (lbs.)	40
GVWR	5512	Refrigerator	SD	Furnace BTU's (1,000's)	16
		Water Heater Cap. (gal.)	6	Tire Size	14"



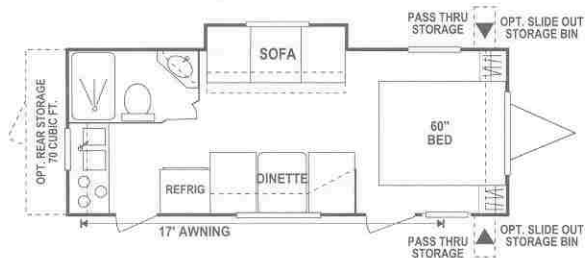
2101QS

UVW (Unloaded Vehicle Wt.)*	4088	Interior Height	76"	Water Cap. (gal.)	31
Dry Hitch Wt.	380	Exterior Width	94"	Waste Water Cap. (gal.)	32
Dry Axle Wt.	3708	Exterior Length	22'4"	Gray Water Cap. (gal.)	32
NCC (Net Carrier Capacity)	1424	Exterior Height	100"	LP Gas Cap. (lbs.)	40
GVWR	5512	Refrigerator	SD	Furnace BTU's (1,000's)	16
		Water Heater Cap. (gal.)	6	Tire Size	14"



2205QSS

UVW (Unloaded Vehicle Wt.)*	4190	Interior Height	76"	Water Cap. (gal.)	28
Dry Hitch Wt.	360	Exterior Width	94"	Waste Water Cap. (gal.)	32
Dry Axle Wt.	3830	Exterior Length	23'	Gray Water Cap. (gal.)	32
NCC (Net Carrier Capacity)	1322	Exterior Height	100"	LP Gas Cap. (lbs.)	40
GVWR	5512	Refrigerator	SD	Furnace BTU's (1,000's)	20
		Water Heater Cap. (gal.)	6	Tire Size	14"

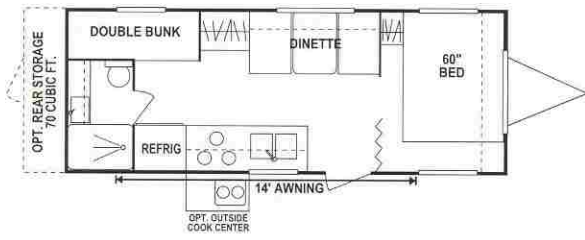


2303 - optional Rear Storage & 2303MS option

UVW (Unloaded Vehicle Wt.)*	3570	Interior Height	76"	Water Cap. (gal.)	30
Dry Hitch Wt.	340	Exterior Width	94"	Waste Water Cap. (gal.)	32
Dry Axle Wt.	3230	Exterior Length	24'4"	Gray Water Cap. (gal.)	32
NCC (Net Carrier Capacity)	2242	Exterior Height	100"	LP Gas Cap. (lbs.)	40
GVWR	5512	Refrigerator	SD	Furnace BTU's (1,000's)	20
		Water Heater Cap. (gal.)	6	Tire Size	14"

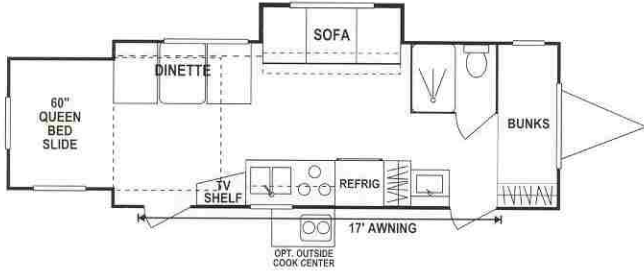


2303MS
Manual Slide Option



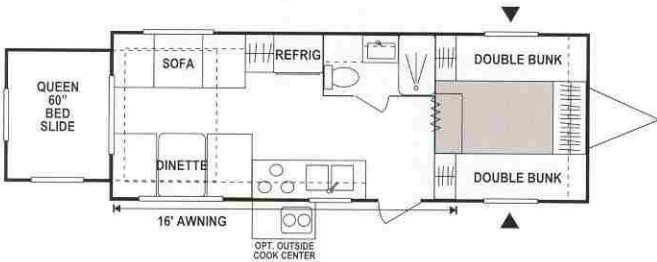
2404 - optional Rear Storage

UVW (Unloaded Vehicle Wt.)*	3930	Interior Height	76"	Water Cap. (gal.)	30
Dry Hitch Wt.	300	Exterior Width	94"	Waste Water Cap. (gal.)	32
Dry Axle Wt.	3630	Exterior Length	25'5"	Gray Water Cap. (gal.)	32
NCC (Net Carrier Capacity)	1582	Exterior Height	100"	LP Gas Cap. (lbs.)	40
GVWR	5512	Refrigerator	SD	Furnace BTU's (1,000's)	20
		Water Heater Cap. (gal.)	6	Tire Size	14"



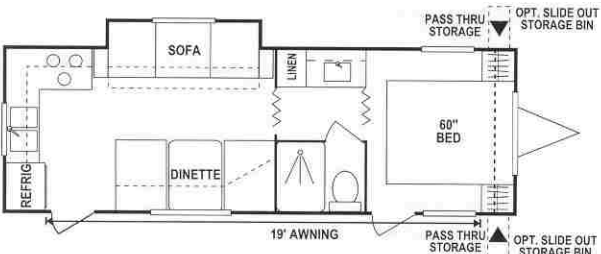
2405MS/QS

UVW (Unloaded Vehicle Wt.)*	4844	Interior Height	76"	Water Cap. (gal.)	30
Dry Hitch Wt.	380	Exterior Width	94"	Waste Water Cap. (gal.)	32
Dry Axle Wt.	4464	Exterior Length	25'5"	Gray Water Cap. (gal.)	32
NCC (Net Carrier Capacity)	2156	Exterior Height	100"	LP Gas Cap. (lbs.)	40
GVWR	7000	Refrigerator	SD	Furnace BTU's (1,000's)	20
		Water Heater Cap. (gal.)	6	Tire Size	15"



2505QSS

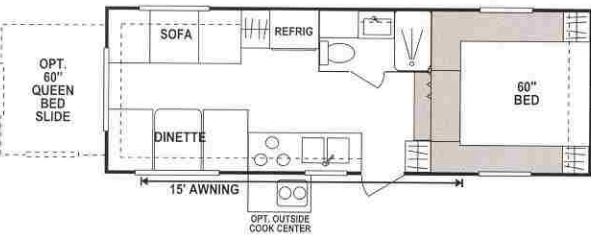
UVW (Unloaded Vehicle Wt.)*	4638	Interior Height	76"	Water Cap. (gal.)	37
Dry Hitch Wt.	620	Exterior Width	94"	Waste Water Cap. (gal.)	32
Dry Axle Wt.	4018	Exterior Length	26'10"	Gray Water Cap. (gal.)	32
NCC (Net Carrier Capacity)	2230	Exterior Height	100"	LP Gas Cap. (lbs.)	40
GVWR	6868	Refrigerator	SD	Furnace BTU's (1,000's)	20
		Water Heater Cap. (gal.)	6	Tire Size	15"



2605MS

UVW (Unloaded Vehicle Wt.)*	4820	Interior Height	76"	Water Cap. (gal.)	37
Dry Hitch Wt.	400	Exterior Width	94"	Waste Water Cap. (gal.)	32
Dry Axle Wt.	4420	Exterior Length	27'9"	Gray Water Cap. (gal.)	32
NCC (Net Carrier Capacity)	2048	Exterior Height	100"	LP Gas Cap. (lbs.)	40
GVWR	6868	Refrigerator	SD	Furnace BTU's (1,000's)	20
		Water Heater Cap. (gal.)	6	Tire Size	15"

SPORTSMEN ULTRA LITE FIFTH WHEELS



2253 - optional Queen Slide (QS)

UVW (Unloaded Vehicle Wt.)*	4170	Interior Height	76"	Water Cap. (gal.)	31
Dry Hitch Wt.	940	Exterior Width	94"	Waste Water Cap. (gal.)	32
Dry Axle Wt.	3230	Exterior Length	24'5"	Gray Water Cap. (gal.)	32
NCC (Net Carrier Capacity)	2098	Exterior Height	104"	LP Gas Cap. (lbs.)	40
GVWR	6268	Refrigerator	SD	Furnace BTU's (1,000's)	20
		Water Heater Cap. (gal.)	6	Tire Size	15"



2352MS

UVW (Unloaded Vehicle Wt.)*	4538	Interior Height	76"	Water Cap. (gal.)	31
Dry Hitch Wt.	800	Exterior Width	94"	Waste Water Cap. (gal.)	32
Dry Axle Wt.	3738	Exterior Length	24'4"	Gray Water Cap. (gal.)	32
NCC (Net Carrier Capacity)	2330	Exterior Height	104"	LP Gas Cap. (lbs.)	40
GVWR	6268	Refrigerator	SD	Furnace BTU's (1,000's)	20
		Water Heater Cap. (gal.)	6	Tire Size	15"

TRAVEL TRAILERS & FIFTH WHEEL STANDARD FEATURES

- Radius Compression Windows
- Solid Oak Drawer Fronts
- Cabinet Doors: Solid Oak Mortise & Tendon Jointed Frames
- Radial Tires
- 1 Sink Cover
- One Piece Royal™ Tuff-Ply™ Roof (12-Year Warranty)
- 3 Burner Hot Plate
- Regular 60" Mattress **
- White Acrylic Deep Bowl Sink
- Deluxe Fabrics
- Steel Framed Sofas
- Storage Drawers on end of Dinette Bases**
- Water Heater By-Pass Kit
- Single Piece Tub Wall Surround
- Power Range Hood w/ Light
- Mini Blinds (all windows)
- 6 Gallon DSI Water Heater
- Light Switch at Entrance Door
- Light Switch for Bathroom
- Tub Faucet on all Floor Plans
- Single Door Refrigerator (SD)
- Skylight over Tub
- Northern Breeze Fan

**Where applicable and codes allow. Note: Some standard features may be cancelled or altered at dealer's request. Features available on early 2003 models may vary.

TRAVEL TRAILERS & FIFTH WHEEL OPTIONAL EQUIPMENT & WEIGHTS

- | | | | | | |
|--|---------|----------------------------|---------|---------------------------|---------|
| • Awning* | 60 lb. | • Outside Cooktop | 24 lbs. | • Spare Tire Carrier | ---- |
| • Bedroom TV Shelf* | 5 lb. | • Oven | 50 lb. | • Spare Tire Cover | ---- |
| • Cable* | 1 lb. | • Convection Oven | 45 lb. | • Stabilizer Jacks | ---- |
| • Microwave* | 36 lb. | • Double Door Refrigerator | 32 lb. | • Exterior Shower | ---- |
| • TV Antenna* | 6 lb. | • Double Step | ---- | • Slide Out Storage Bin | 33 lbs. |
| • 13,500 BTU A/C*
(adds 12" to unit height) | 105 lb. | • Rear Cap (QS only) | 50 lbs. | (Models 2303 & 2605 only) | |
| • Stereo / CD | 7 lbs. | • Rear Skirt (QS only) | 50 lbs. | | |
| | | • Spare Tire | 40 lbs. | | |

*All included in a package

STANDARD CONSTRUCTION FEATURES

FLOOR

- Puncture, Tear & Weather Resistant Underbelly
- 2x3 Floor Joist 16" O.C.
- 5/8" Tongue & Groove Plywood
- Box Tubular Steel Frame
- Fiberglass Insulation R7

ROOF CONSTRUCTION

- Fiberglass Insulation R7
- Luan Paneling
- 2x3 Tapered Rafters
- Thermo-Ply Board
- One Piece Royal Tuff-Ply Roof (12 Year Warranty)

SIDEWALL CONSTRUCTION

- 2x2 Studs 16" O.C.
- .024 MESA Metal
- Fiberglass Insulation (R7)
- Luan Paneling



Sportsmen



MODEL 2452P



SPORTSMEN 2003

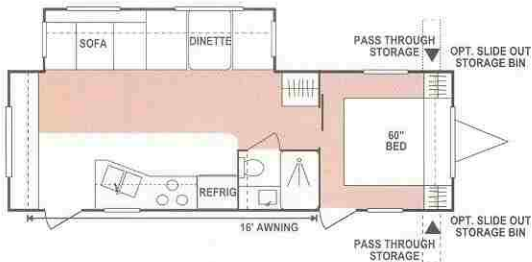
Sportsmen Travel Trailers and Fifth Wheels guarantee the most comfortable Jiffy sofa in the RV industry. We use "Residential Hollow Fill" for long lasting comfort - not RV foam which breaks down easily. Just because the furniture is in an RV doesn't mean you have to compromise the comforts of home . . .

SPORTSMEN TRAVEL TRAILERS



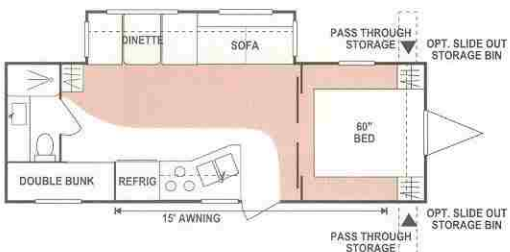
2503

UVW (Unloaded Vehicle Wt.)*	4500	Interior Height	78"	Water Cap. (gal)	30
Dry Hitch Wt.	600	Exterior Width	96"	Waste Water Cap. (gal.)	32
Dry Axle Wt.	3900	Exterior Length	26'3"	Gray Water Cap. (gal.)	32
NCC (Net Carrier Capacity)	2368	Exterior Height	115"	LP Gas Cap. (lbs.)	60
GVWR	6868	Refrigerator	DD	Furnace BTU's (1,000's)	20
		Water Heater Cap. (gal.)	6	Tire Size	15"



2604P - options 4 & 5

UVW (Unloaded Vehicle Wt.)*	5960	Interior Height	78"	Water Cap. (gal)	55
Dry Hitch Wt.	780	Exterior Width	96"	Waste Water Cap. (gal.)	32
Dry Axle Wt.	5180	Exterior Length	28'3"	Gray Water Cap. (gal.)	32
NCC (Net Carrier Capacity)	4040	Exterior Height	125"	LP Gas Cap. (lbs.)	60
GVWR	10000	Refrigerator	DD	Furnace BTU's (1,000's)	25
		Water Heater Cap. (gal.)	6	Tire Size	15"



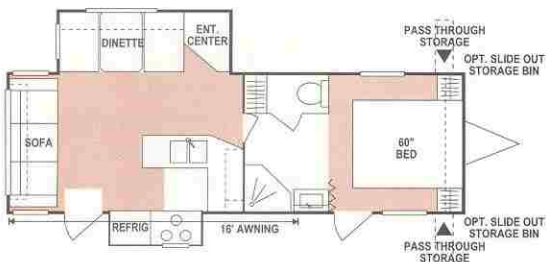
2703P - options 4 & 5

UVW (Unloaded Vehicle Wt.)*	6420	Interior Height	78"	Water Cap. (gal)	30
Dry Hitch Wt.	820	Exterior Width	96"	Waste Water Cap. (gal.)	32
Dry Axle Wt.	5600	Exterior Length	28'4"	Gray Water Cap. (gal.)	32
NCC (Net Carrier Capacity)	3580	Exterior Height	125"	LP Gas Cap. (lbs.)	60
GVWR	10000	Refrigerator	DD	Furnace BTU's (1,000's)	25
		Water Heater Cap. (gal.)	6	Tire Size	15"



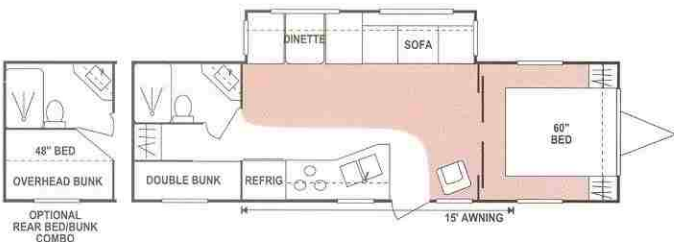
2803

UVW (Unloaded Vehicle Wt.)*	4900	Interior Height	78"	Water Cap. (gal)	30
Dry Hitch Wt.	760	Exterior Width	96"	Waste Water Cap. (gal.)	32
Dry Axle Wt.	4140	Exterior Length	29'6"	Gray Water Cap. (gal.)	32
NCC (Net Carrier Capacity)	2860	Exterior Height	115"	LP Gas Cap. (lbs.)	60
GVWR	7760	Refrigerator	DD	Furnace BTU's (1,000's)	25
		Water Heater Cap. (gal.)	6	Tire Size	15"



2805Px2 - option 4

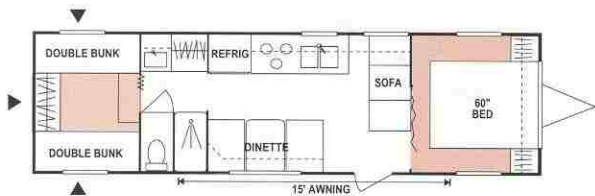
UVW (Unloaded Vehicle Wt.)*	6740	Interior Height	78"	Water Cap. (gal)	28
Dry Hitch Wt.	600	Exterior Width	96"	Waste Water Cap. (gal.)	32
Dry Axle Wt.	6140	Exterior Length	30'3"	Gray Water Cap. (gal.)	32
NCC (Net Carrier Capacity)	3260	Exterior Height	125"	LP Gas Cap. (lbs.)	60
GVWR	10000	Refrigerator	DD	Furnace BTU's (1,000's)	25
		Water Heater Cap. (gal.)	6	Tire Size	15"



3003P - options 4 & 5

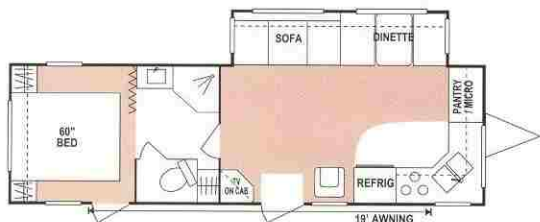
UVW (Unloaded Vehicle Wt.)*	6080	Interior Height	78"	Water Cap. (gal)	30
Dry Hitch Wt.	580	Exterior Width	96"	Waste Water Cap. (gal.)	32
Dry Axle Wt.	5500	Exterior Length	30'8"	Gray Water Cap. (gal.)	32
NCC (Net Carrier Capacity)	3920	Exterior Height	125"	LP Gas Cap. (lbs.)	60
GVWR	10000	Refrigerator	DD	Furnace BTU's (1,000's)	25
		Water Heater Cap. (gal.)	6	Tire Size	15"

SPORTSMEN TRAVEL TRAILERS



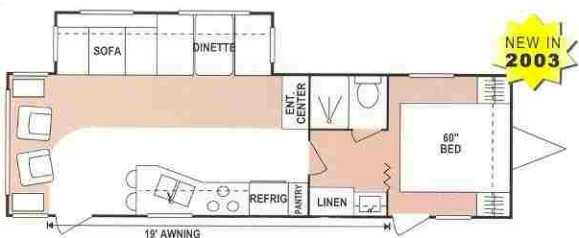
3004SS

UVW (Unloaded Vehicle Wt.)*	5060	Interior Height	78"	Water Cap. (gal)	30
Dry Hitch Wt.	720	Exterior Width	96"	Waste Water Cap. (gal.)	32
Dry Axle Wt.	4340	Exterior Length	31'11"	Gray Water Cap. (gal.)	32
NCC (Net Carrier Capacity)	2660	Exterior Height	115"	LP Gas Cap. (lbs.)	60
GVWR	7720	Refrigerator	DD	Furnace BTU's (1,000's)	25
		Water Heater Cap. (gal.)	6	Tire Size	15"



3102P - options 4 & 5

UVW (Unloaded Vehicle Wt.)*	7040	Interior Height	78"	Water Cap. (gal)	30
Dry Hitch Wt.	1420	Exterior Width	96"	Waste Water Cap. (gal.)	32
Dry Axle Wt.	5620	Exterior Length	31'8"	Gray Water Cap. (gal.)	32
NCC (Net Carrier Capacity)	2960	Exterior Height	125"	LP Gas Cap. (lbs.)	60
GVWR	10000	Refrigerator	DD	Furnace BTU's (1,000's)	25
		Water Heater Cap. (gal.)	6	Tire Size	15"



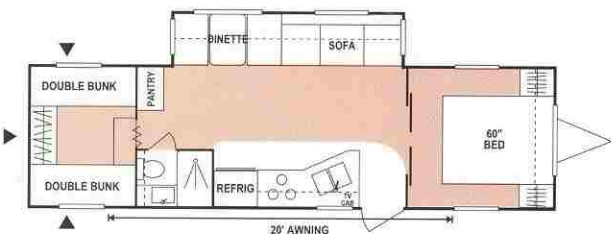
3103P - options 4 & 5

UVW (Unloaded Vehicle Wt.)*	N/A	Interior Height	78"	Water Cap. (gal)	28
Dry Hitch Wt.	N/A	Exterior Width	96"	Waste Water Cap. (gal.)	32
Dry Axle Wt.	N/A	Exterior Length	N/A	Gray Water Cap. (gal.)	32
NCC (Net Carrier Capacity)	N/A	Exterior Height	125"	LP Gas Cap. (lbs.)	60
GVWR	10000	Refrigerator	DD	Furnace BTU's (1,000's)	25
		Water Heater Cap. (gal.)	6	Tire Size	15"



3105Px3 - option 4

UVW (Unloaded Vehicle Wt.)*	N/A	Interior Height	78"	Water Cap. (gal)	30
Dry Hitch Wt.	N/A	Exterior Width	96"	Waste Water Cap. (gal.)	32
Dry Axle Wt.	N/A	Exterior Length	N/A	Gray Water Cap. (gal.)	32
NCC (Net Carrier Capacity)	N/A	Exterior Height	125"	LP Gas Cap. (lbs.)	60
GVWR	10000	Refrigerator	DD	Furnace BTU's (1,000's)	25
		Water Heater Cap. (gal.)	6	Tire Size	15"



3204PSS - options 4 & 5

UVW (Unloaded Vehicle Wt.)*	6880	Interior Height	78"	Water Cap. (gal)	30
Dry Hitch Wt.	660	Exterior Width	96"	Waste Water Cap. (gal.)	32
Dry Axle Wt.	6220	Exterior Length	32'7"	Gray Water Cap. (gal.)	32
NCC (Net Carrier Capacity)	3120	Exterior Height	125"	LP Gas Cap. (lbs.)	60
GVWR	10000	Refrigerator	DD	Furnace BTU's (1,000's)	30
		Water Heater Cap. (gal.)	6	Tire Size	15"



3305P - options 4 & 5

UVW (Unloaded Vehicle Wt.)*	N/A	Interior Height	78"	Water Cap. (gal)	30
Dry Hitch Wt.	N/A	Exterior Width	96"	Waste Water Cap. (gal.)	32
Dry Axle Wt.	N/A	Exterior Length	N/A	Gray Water Cap. (gal.)	32
NCC (Net Carrier Capacity)	N/A	Exterior Height	125"	LP Gas Cap. (lbs.)	60
GVWR	10000	Refrigerator	DD	Furnace BTU's (1,000's)	30
		Water Heater Cap. (gal.)	6	Tire Size	15"

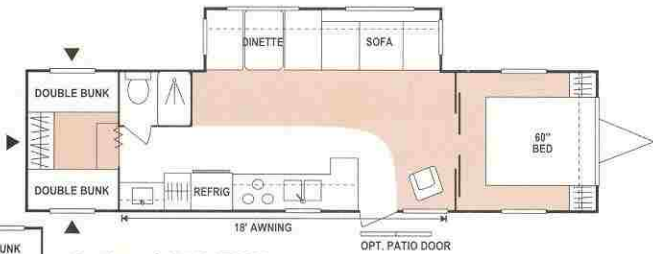
SPORTSMEN TRAVEL TRAILERS



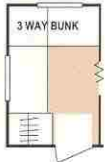
NEW IN 2003

3404P - options 4 & 5

UVW (Unloaded Vehicle Wt.)*	N/A	Interior Height	78"	Water Cap. (gal)	30
Dry Hitch Wt.	N/A	Exterior Width	96"	Waste Water Cap. (gal.)	32
Dry Axle Wt.	N/A	Exterior Length	N/A	Gray Water Cap. (gal.)	32
NCC (Net Carrier Capacity)	N/A	Exterior Height	125"	LP Gas Cap. (lbs.)	60
GVWR	10000	Refrigerator	DD	Furnace BTU's (1,000's)	30
		Water Heater Cap. (gal.)	6	Tire Size	15"



Optional 3501PSS
Rear Triple Bunk Bedroom



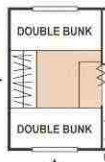
3501PSS - options 4 & 8

UVW (Unloaded Vehicle Wt.)*	7240	Interior Height	78"	Water Cap. (gal)	30
Dry Hitch Wt.	840	Exterior Width	96"	Waste Water Cap. (gal.)	32
Dry Axle Wt.	6400	Exterior Length	35'6"	Gray Water Cap. (gal.)	32
NCC (Net Carrier Capacity)	2760	Exterior Height	125"	LP Gas Cap. (lbs.)	60
GVWR	10000	Refrigerator	DD	Furnace BTU's (1,000's)	30
		Water Heater Cap. (gal.)	6	Tire Size	15"



NEW IN 2003

Optional 3501Px2
Rear Double Bunk with Super Storage



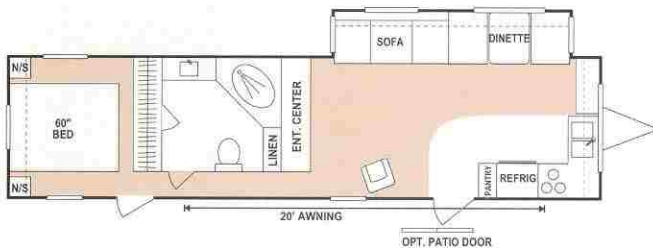
3501Px2 - options 4, 5 & 8

UVW (Unloaded Vehicle Wt.)*	N/A	Interior Height	78"	Water Cap. (gal)	30
Dry Hitch Wt.	N/A	Exterior Width	96"	Waste Water Cap. (gal.)	32
Dry Axle Wt.	N/A	Exterior Length	N/A	Gray Water Cap. (gal.)	32
NCC (Net Carrier Capacity)	N/A	Exterior Height	125"	LP Gas Cap. (lbs.)	60
GVWR	10000	Refrigerator	DD	Furnace BTU's (1,000's)	30
		Water Heater Cap. (gal.)	6	Tire Size	15"



3513P - options 4 & 5

UVW (Unloaded Vehicle Wt.)*	7500	Interior Height	78"	Water Cap. (gal)	30
Dry Hitch Wt.	540	Exterior Width	96"	Waste Water Cap. (gal.)	32
Dry Axle Wt.	6960	Exterior Length	35'6"	Gray Water Cap. (gal.)	32
NCC (Net Carrier Capacity)	2500	Exterior Height	125"	LP Gas Cap. (lbs.)	60
GVWR	10000	Refrigerator	DD	Furnace BTU's (1,000's)	30
		Water Heater Cap. (gal.)	6	Tire Size	15"



3708P - options 4 & 5

UVW (Unloaded Vehicle Wt.)*	7340	Interior Height	78"	Water Cap. (gal)	30
Dry Hitch Wt.	1540	Exterior Width	96"	Waste Water Cap. (gal.)	32
Dry Axle Wt.	5800	Exterior Length	37'9"	Gray Water Cap. (gal.)	32
NCC (Net Carrier Capacity)	2660	Exterior Height	125"	LP Gas Cap. (lbs.)	60
GVWR	10000	Refrigerator	DD	Furnace BTU's (1,000's)	30
		Water Heater Cap. (gal.)	6	Tire Size	15"

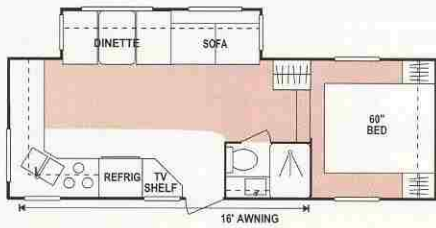


3803P - options 4 & 5

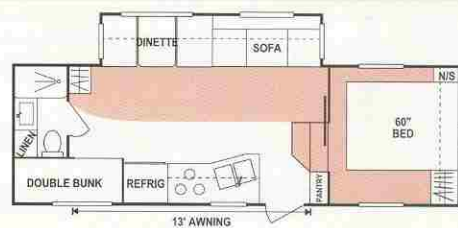
UVW (Unloaded Vehicle Wt.)*	7780	Interior Height	78"	Water Cap. (gal)	30
Dry Hitch Wt.	1100	Exterior Width	96"	Waste Water Cap. (gal.)	32
Dry Axle Wt.	6680	Exterior Length	38'8"	Gray Water Cap. (gal.)	32
NCC (Net Carrier Capacity)	2220	Exterior Height	125"	LP Gas Cap. (lbs.)	60
GVWR	10000	Refrigerator	DD	Furnace BTU's (1,000's)	30
		Water Heater Cap. (gal.)	6	Tire Size	15"

SPORTSMEN FIFTH WHEELS

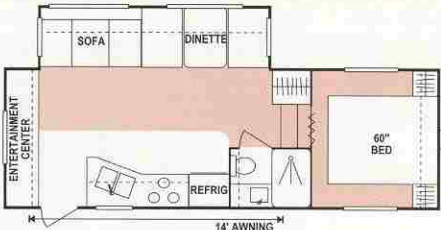
2452P - option 4 Medium Profile



2454P - options 4 & 5 Medium Profile



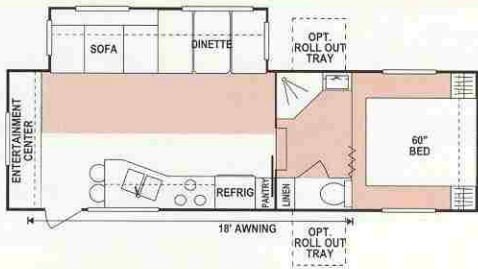
2456P - options 4 & 5 Low Profile



2457Px2 - option 4 Medium Profile



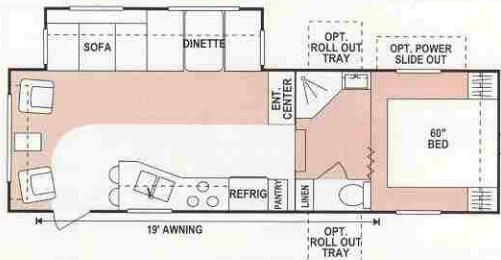
2653P - options 4 & 5 Medium Profile



2851P - options 4, 5 & 6 Stand Up or Med. Profile



2852P - options 4, 5 & 6 Stand Up or Medium Profile



2857Px2 - options 4, 5 & 6 Stand Up or Med. Profile

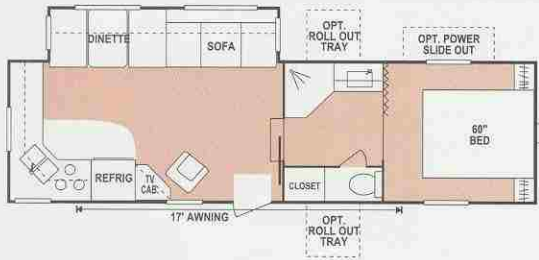


SPECIFICATIONS

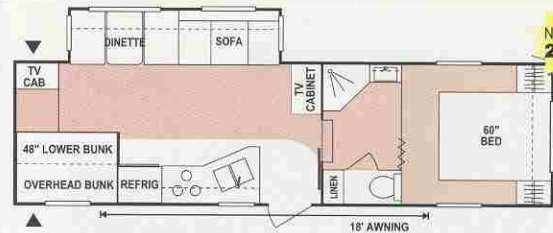
	2452P	2454P	2456P	2457Px2	2653P	2851P	2852P	2857Px2
UVW (Unloaded Vehicle Wt.)*	6500	6460	6290	7220	6740	7300	7490	7840
Dry Hitch Wt.	1380	1260	1180	1380	1480	1440	1100	1900
Dry Axle Wt.	5120	5200	5110	5840	5260	5860	6340	5720
NCC (Net Carrier Capacity)	3500	3540	3710	2730	3260	4140	4410	4060
GVWR	10000	10000	10000	10000	10000	11440	11900	11900
Interior Height	78"	78"	78"	78"	78"+	78"+	78"+	78"+
Exterior Width	96"	96"	96"	96"	96"	96"	96"	96"
Exterior Length	26'5"	26'6"	25'	26'8"	27'	28'8"	30'1"	28'8"
Exterior Height	132"	132"	126"	132"	132"	142"	142"	142"
Refrigerator	DD	DD	DD	DD	DD	DD	DD	DD
Water Heater Cap. (gal.)	6	6	6	6	6	6	6	6
Water Cap. (gal.)	55	55	55	55	55	55	55	55
Waste Water Cap. (gal.)	32	32	32	32	32	32	32	32
Gray Water Cap. (gal.)	32	32	32	50	50	50	50	50
LP Gas Cap. (lbs.)	60	60	60	60	60	60	60	60
Furnace BTU's (1,000's)	25	25	25	25	25	25	25	25
Tire Size	15"	15"	15"	15"	15"	15"	15"	15"

SPORTSMEN FIFTH WHEELS

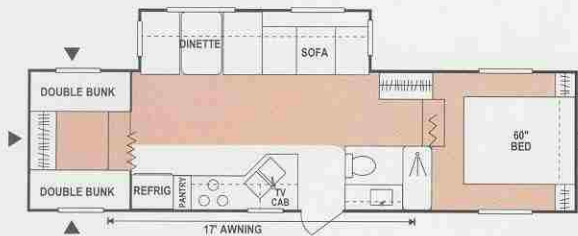
3051P options 4, 5 & 6 Stand Up Profile



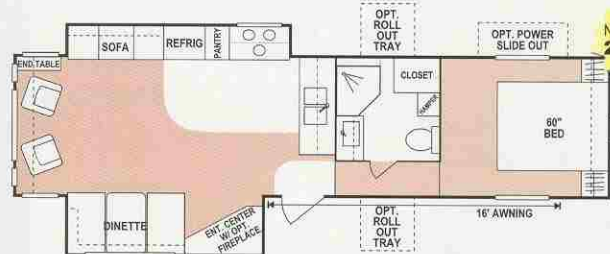
3059P Stand Up or Medium Profile



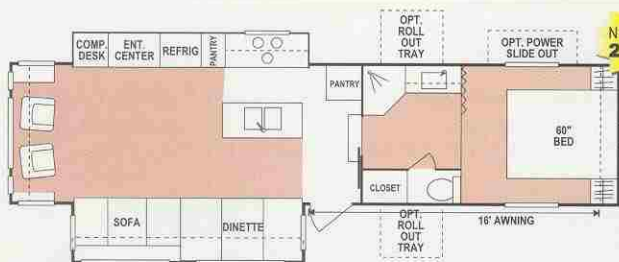
3156PSS Medium Profile



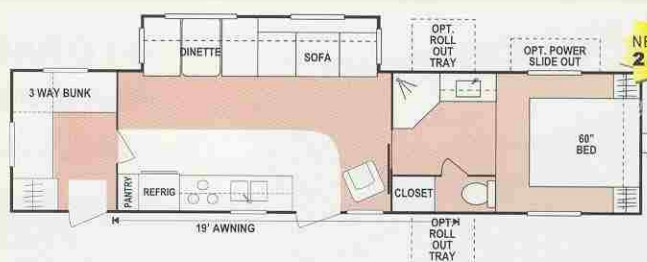
3354Px2 Stand Up or Medium Profile



3453Px2 Stand Up or Medium Profile



3554P Stand Up or Medium Profile



SPECIFICATIONS

	3051P	3059P	3156PSS	3354Px2	3453Px2	3554P
UVW (Unloaded Vehicle Wt.)*	7920	7840	6800	7840	7840	7840
Dry Hitch Wt.	1420	1900	1200	1900	1900	1900
Dry Axle Wt.	6500	5720	5600	5720	5720	5720
NCC (Net Carrier Capacity)	3820	4060	3200	4060	4060	4060
GVWR	11740	11900	10000	11900	11900	11900
Interior Height	78"+	78"+	78"+	78"+	78"+	78"+
Exterior Width	96"	96"	96"	96"	96"	96"
Exterior Length	31'3"	28'8"	32'10"	28'8"	28'8"	28'8"
Exterior Height	142"	142"	132"	142"	142"	142"
Refrigerator	DD	DD	DD	DD	DD	DD
Water Heater Cap. (gal.)	6	6	6	6	6	6
Water Cap. (gal)	55	55	55	55	55	55
Waste Water Cap. (gal.)	32	32	32	32	32	32
Gray Water Cap. (gal.)	50	50	64	50	50	50
LP Gas Cap. (lbs.)	60	60	60	60	60	60
Furnace BTU's (1,000's)	30	25	30	25	25	25
Tire Size	15"	15"	15"	15"	15"	15"



Opt. Roll Out Tray

Accessible
inside and out



Opt. Slide Out Bin

STORAGE GALORE

When looking for maximum storage and easy-access storage options, look no further. We take the stress out of RVing - so relax and enjoy the way RVing is meant to be.



Standard Metal Sided Exterior

Floorplan Options

Custom tailor your Sportsmen Travel Trailer or Fifth Wheel by selecting from these options.



OPTION 4



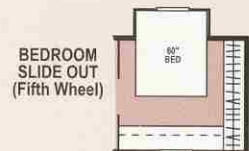
OPTION 5



OPTION 6



OPTION 8



BEDROOM
SLIDE OUT
(Fifth Wheel)

TRAVEL TRAILERS & FIFTH WHEEL STANDARD FEATURES

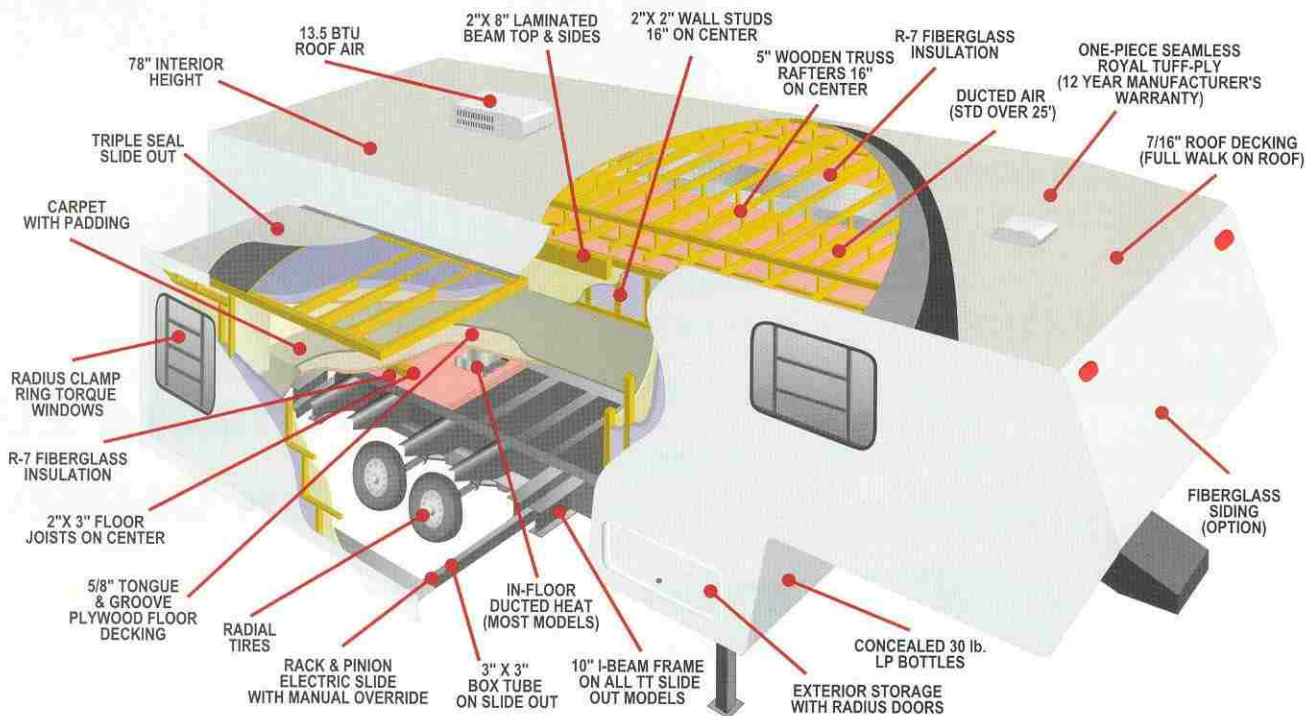
- Flush Floors
- Radius Compression Windows
- Solid Oak Drawer Fronts
- Cabinet Doors: Solid Oak, Mortise & Tendon Jointed Frames
- Radial Tires
- Cable Hook Up
- 1 Sink Cover
- One Piece Royal™ Tuff-Ply™ Roof
- Gas Props on Bed Base*
- Deluxe Fabrics
- Oven - W/ Black Porcelain Front (Large 22") with 3 Burner High Output Range & Piezo Ignitor
- Steel Framed Sofas
- Storage Drawers on end of Dinette Bases*
- Chair (as indicated on floor plan)
- Water Heater By-Pass Kit
- Single Piece Tub Wall Surround
- Wall Border (living room & bedroom)
- Power Range Hood w/ Light
- Mini Blinds (all windows except bunk windows for child safety)
- Stereo / CD
- TV Antenna w/ Booster & 2 Jacks*
- 6 Gallon DSI Water Heater
- Overhead Cabinets above sofa & dinette in Livingroom Slide Outs
- 30# LP Bottles
- Light Switch at Entrance Door
- Light Switch for Bathroom
- Tub Faucet on all Floor Plans
- Double Door Refrigerator (DD)
- 13,500 BTU Air Conditioner
- Ducted Air (2600 Series & larger Travel Trailers and 2550 Series & larger Fifth Wheels)
- Awning (Recommended Size)
- Microwave
- Monitor Panel
- Gas Bottle Cover (on Travel Trailers)
- White Acrylic Deep Bowl Sink
- Triple Step on Power Slide Out models at main entry door
- Double Step on non-slide models at main entry door
- Hi-Rise Kitchen Faucet
- NorthernBreeze™ Fan
- Skylight over Tub

* Where applicable and codes allow.

Some Standard Features may be cancelled or altered at dealer's request.

Features available on early 2003 models may vary.

STANDARD CONSTRUCTION FEATURES



TRAVEL TRAILERS & FIFTH WHEEL OPTIONAL EQUIPMENT

- Exterior Shower
- Stabilizer Jacks
- Water Filter
- Stove Cover
- Spare Tire
- Spare Tire Carrier
- Spare Tire Cover
- Chrome Bumper Cover
- Deluxe Package I
- Gas/Electric DSI 6 Gal. Water Heater
- RVQ Grill
- Flexfoil™ Reflective Insulation
- Sundeck and Ladder
- Shocks
- Roll Out Storage Tray (Fifth Wheel models only)
- Power Jack
- Ottoman
- Assist Grab Handle
- Large Double Door Refrigerator
- 15,000 Air Conditioner
- Slide Out Storage Bin (Models 2604P, 2703P & 2805Px2 only)
- Fiberglass Exterior w/ End Caps (adds 10% to overall unit weight)

Sportsmen



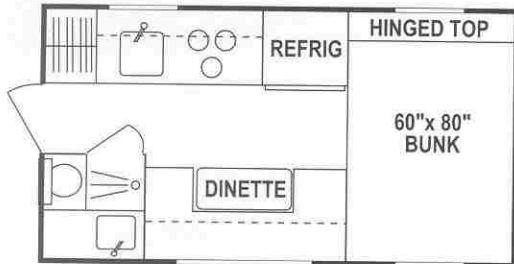
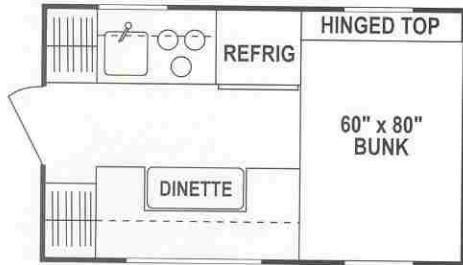
STANDARD
METAL SIDING

SPORTSMEN 2003 TRUCK CAMPERS



OPTIONAL
FIBERGLASS SIDING

SPORTSMEN TRUCK CAMPERS



801

UVW (Unloaded Vehicle Wt.)*	1600	Water Heater Cap. (gal.)	N/A
Interior Height	78"	Water Cap. (gal.)	20
Exterior Width	94"	Waste Water Cap. (gal.)	N/A
Exterior Length	8'	Gray Water Cap. (gal.)	N/A
Exterior Height**	85"	LP Gas Cap. (lbs.)	40
Refrigerator (cubic feet)	2.7		

951

UVW (Unloaded Vehicle Wt.)*	1960	Water Heater Cap. (gal.)	6
Interior Height	78"	Water Cap. (gal.)	20
Exterior Width	94"	Waste Water Cap. (gal.)	6
Exterior Length	9' 5"	Gray Water Cap. (gal.)	6
Exterior Height**	85"	LP Gas Cap. (lbs.)	40
Refrigerator (cubic feet)	3.5		

* Limited Models (all fiberglass) adds approximately 10% to total weight. Some Standard Features may be cancelled or altered at dealer's request. Features available on early 2003 models may vary.

** Exterior Height does NOT include air conditioner.

TRUCK CAMPER STANDARD FEATURES

- 3 Camper Jacks
- Single Door Refrigerator
- 12,000 BTU Heater
- Converter
- Slider Window
- Ladder & Rack
- Wired for AC
- Radius Window
- Double 20 lb. Gas Bottles
- Rubber Roof

TRUCK CAMPER POPULAR OPTIONS

- 4 Corner Screw Jacks
- 7,000 BTU Air Conditioner
- Oven
- Cabinet Bunk
- Toilet (801 Model)

TRUCK CAMPER CONSTRUCTION FEATURES

- 5/8" Tongue & Groove Plywood Floors
- .024 MESA Metal Sidewalls
- 2 x 2 Studs 16" O.C. & closer
- 3.6 LUAN Paneling
- Fiberglass Insulation R7 (Sidewalls & Roof)
- One Piece Rubber Roof w/ 3/8" Deck Board
- 2 x 3 Tapered Rafters 16" O.C.
- 3.6 LUAN Ceiling Board

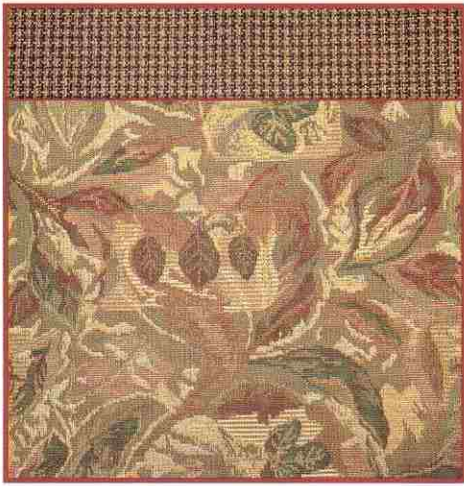


HERE FOR THE LONG HAUL . . .

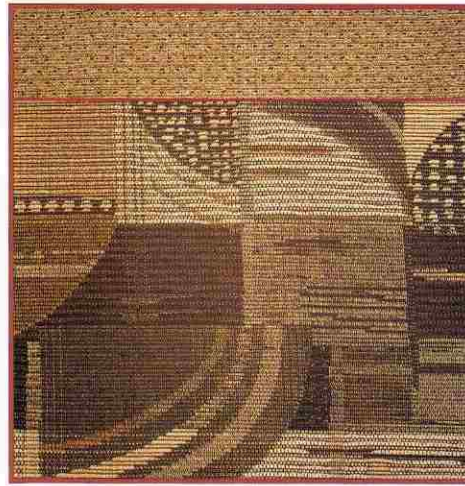
For over 31 years we've been earning our reputation as an outstanding recreational vehicle manufacturer - largely through our commitment to quality and our attention to meeting unique needs of customers like you.

. . . AND GOING STRONG

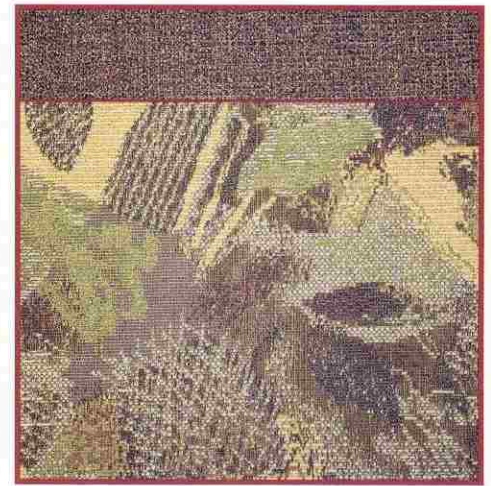
Every manufacturer should be proud of their product. We are. As a matter of fact, we believe in our construction techniques strongly enough to offer you our 2 year structural warranty. We want to earn your business.



SWEETBRIAR



MOCHA



PRISM

2x2 Warranty – The K-Z 2x2 Warranty is a manufacturer’s warranty. Each K-Z product is warranted to the original purchaser for twenty-four (24) months from the original date of purchase. Coverage includes appliances, components, construction and FULL structure.

Our warranty is also transferable within the first two (2) years for a small processing fee. For a copy of the warranty with full terms and conditions, ask your local K-Z Dealer or visit our web site at <http://www.kz-rv.com>.

Vehicle Loading – Every effort has been made to provide the greatest number of options for the recreational owner. Each owner is responsible to select loads allowing the recreational vehicle to remain within the manufacturer’s specified chassis weight limits. Do not overload the recreational vehicle.

Dry Weights are based on standard features only and do not include optional equipment. Carrying capacity is determined by subtracting UVW from GVWR and includes fluids, options and cargo. Liquid capacities and weights are approximations only.

NOTE: *This information is intended as a guide only. Weights of individual vehicles are approximate. Consult your Owner’s Manual for complete loading, weighing & towing instructions.*



Sportsmen

Dealer:

K-Z Incorporated
9270 West U.S. 20
Shipshewana, IN 46565
E-Mail kz@kz-rv.com
www.kz-rv.com

Plant Location: 1 Mile West of S.R. 5 on U.S. 20

Due to continued research and advances, manufacturer reserves the right to change specifications, design, price and equipment without notice, and assumes no responsibility for any error in this literature.