

SandpiperTM

by Forest River



*We build the memories
for your circle of life*



Fifth Wheels & Travel Trailers



Experience the best with Forest River

At Forest River, your need is our primary focus! Quality and durability combined with luxury at an affordable price is the goal. Sandpiper™ is our commitment to you of achieving that goal. We have built the Sandpiper™ to provide you and your family with many years of trouble free service by utilizing only tried and true construction techniques combined with the best available components that have provided thousands of families with the best camping experience possible. So start planning your next vacation and count on doing it in outstanding style and comfort because you can always depend on Sandpiper™!



Oversized 44" dinettes on our slide rooms provide the extra room to enjoy a meal or conversation. Heavy duty fabrics with 5" high density foam seat cushions guard against premature breakdown while adding lasting beauty.

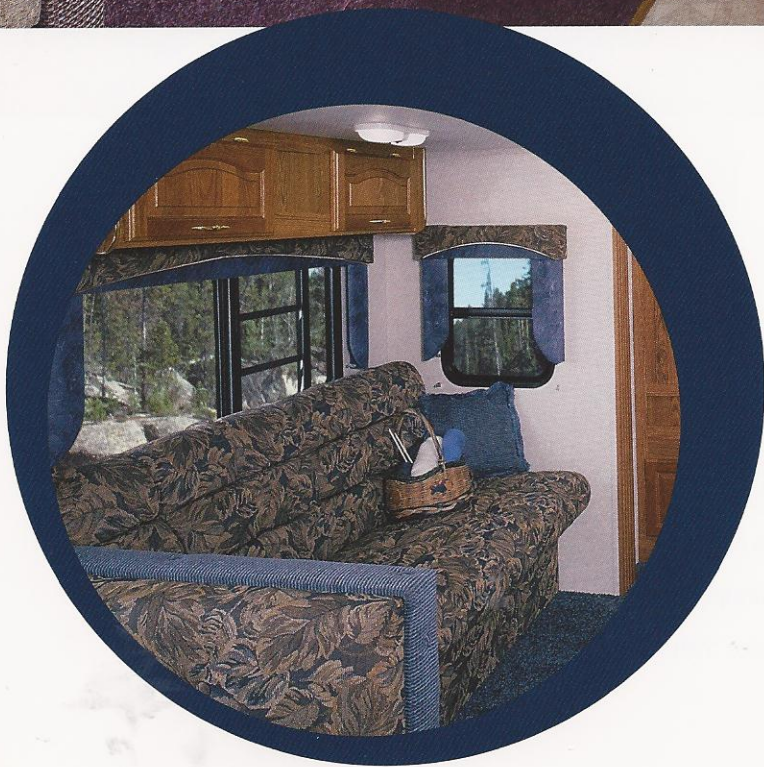
Mauve decor.



Full size entertainment centers that help organize a busy area with an attractive design are at the heart of all Sandpiper™ fifth wheels. Our solid oak, mortise and tenon doors provide not only a warm “homelike” interior, but offer you years of long lasting beauty. Sandpiper™ incorporates the most useable storage space and drawers per floor plan in the industry. See why experienced campers choose Sandpiper™. *Model 30RLSS shown in Mauve decor.*



Hard lambrequin side valances are a nice touch on every Sandpiper™. Providing more privacy and sun blocking capabilities than loose fitting drapes. *Mauve decor.*



All the comforts of home for your life of adventure on the road are everyday features in each Sandpiper™. From the 24" overhead cabinets with sculptured cathedral arch tops to our famous "homestyle" kitchen that features solid oak counter top edging, 80/20 acrylic sink with single lever faucet and plastic sink covers. Each Sandpiper™ is designed and built to be your home away from home.

Model 27FBSS shown in Mauve decor.

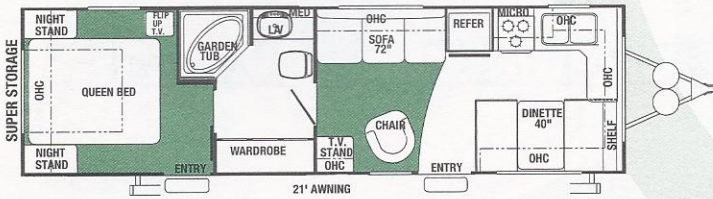
With Sandpiper's hot new decors you will be itching to have friends over. You'll have plenty of space to entertain them with slide-out rooms that feature soft, comfortable tufted sofas, opening windows at the end of our slide rooms and extra tall overhead cabinets. *Blue decor.*

Travel Trailer Floor Plans

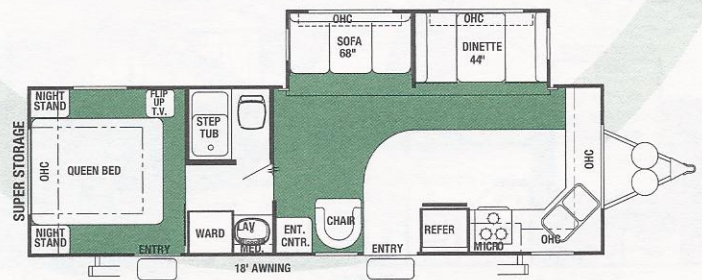
Sandpiper™

by Forest River

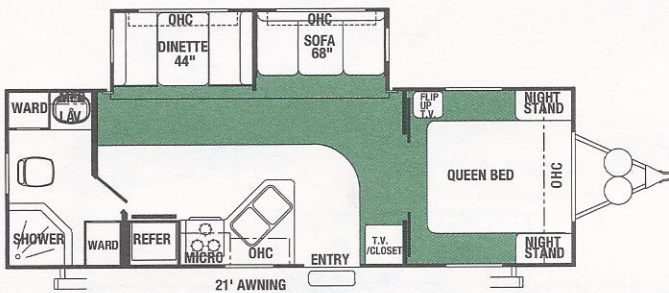
30GT Options 1, 2, A, C



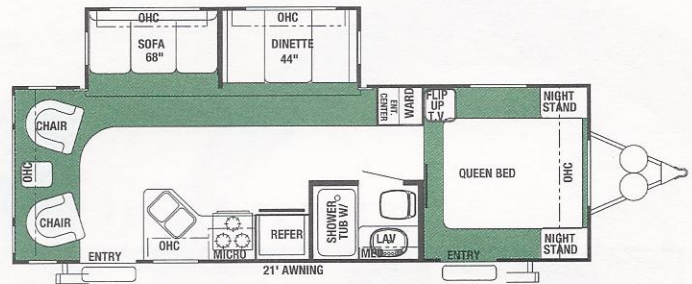
27FKSS Options 1, 2, A, C



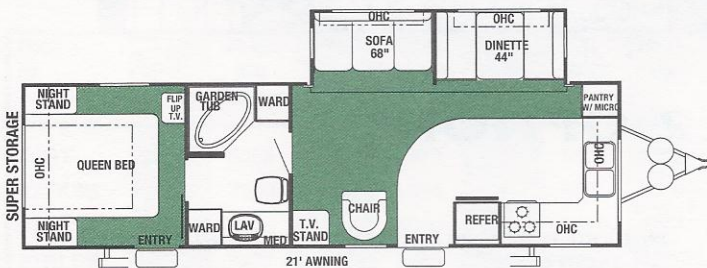
27FBSS Options 1, 2, A



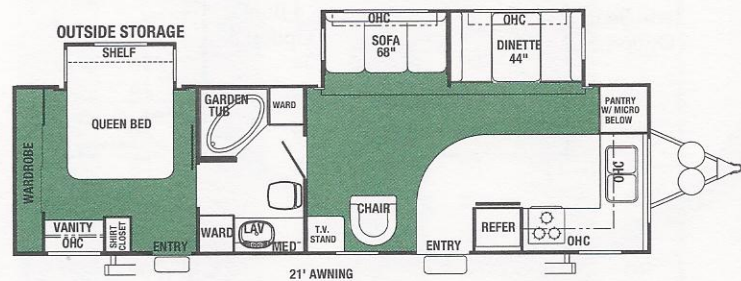
27RLSS Options 1, 2, A



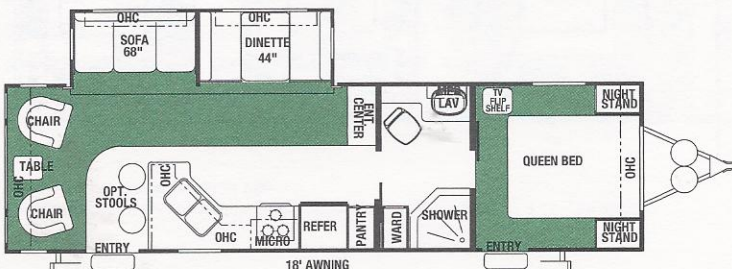
30FKSS Options 1, 2, A, C



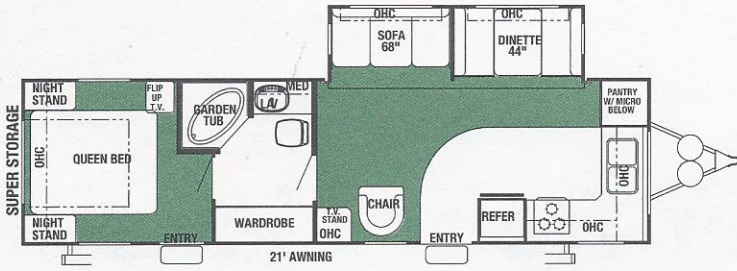
32FKDS Option C



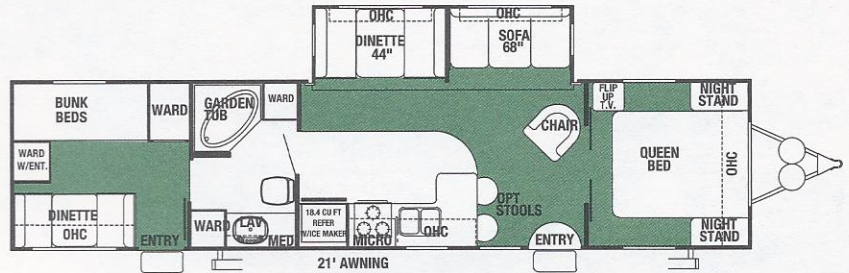
32RLSS Options 1, 2, A, C



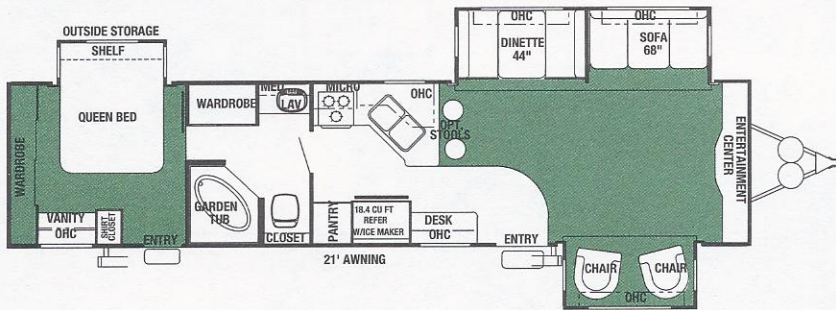
33FKSS Options 1, 2, A, C



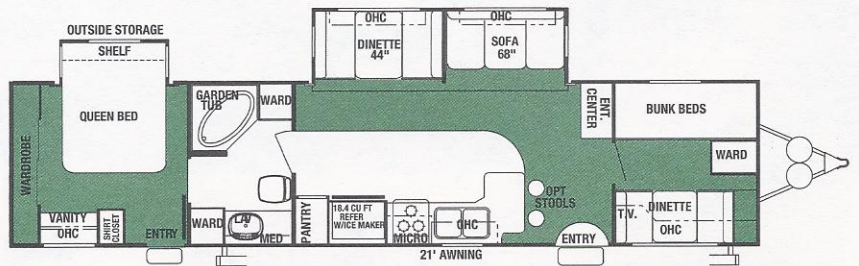
37BHSS Options 1, 2, A, B, C



38FLTS Option C

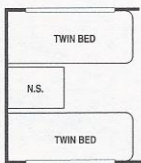


38BHDS Options A, B, C

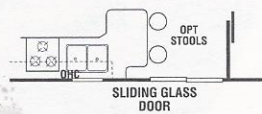
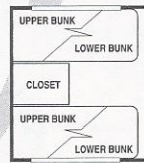


TRAVEL TRAILER OPTIONS

Twin Beds
Option A



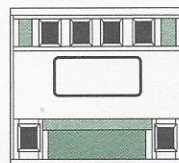
4 Bunks
Option B



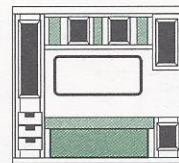
Patio Door
Option C

Bedroom wardrobe options except 32FKDS, 38BHDS, and 38FLTS

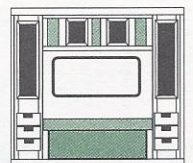
Standard

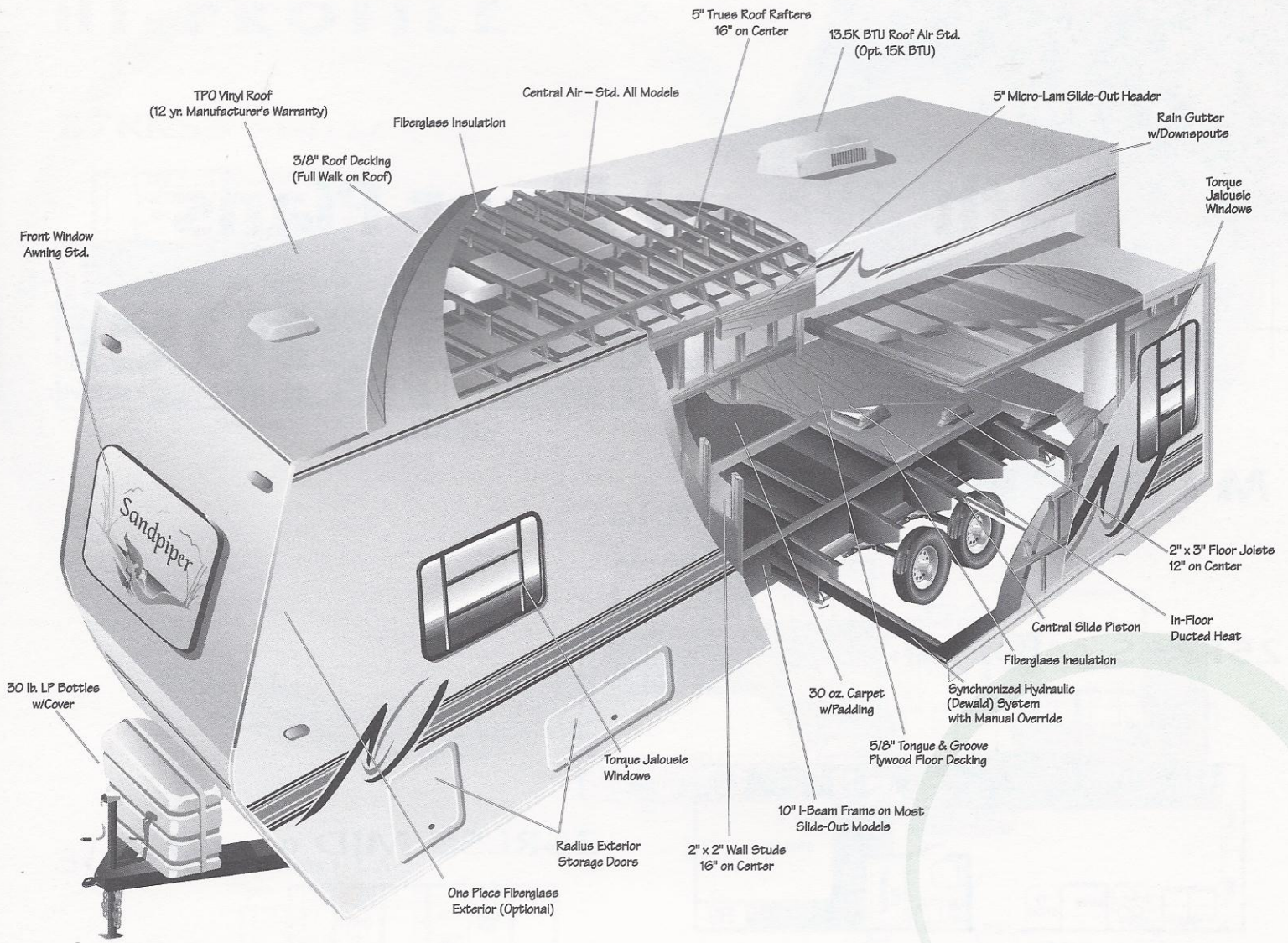


Option 1



Option 2





TRAVEL TRAILER SPECIFICATIONS

Model No.	Ship* Weight	Weight With Fiberglass	GVWR	Cargo Capacity	Hitch Weight	Axle Weight	Exterior Height	Exterior Length	Sleeping Capacity	Fresh Water Capacity	Waste Water (Gal.)	Grey Water (Gal.)	Water Heater Cap. (Gal.)	LP Capacity (Lbs.)	Furnace BTU (x1000)	Bedroom Height
30GT	5805	6252	7680	1875	680	5125	10' 1"	32' 0"	6	40	45	30	6	60	30	80"
27FKSS	6895	7300	8290	1395	1290	5605	10' 9"	30' 1"	6	50	30	60	6	60	30	80"
27FBSS	6720	7119	10770	3590	610	6110	10' 9"	28' 6"	6	40	55	30	6	60	30	80"
27RLSS	7070	7477	10920	3449	760	6310	10' 9"	29' 1"	6	40	30	30	6	60	30	80"
30FKSS	6965	7393	11,150	4185	990	5975	10' 9"	31' 11"	6	50	50	60	6	60	30	80"
32FKDS	7665	8140	11,055	3390	895	6770	10' 9"	32' 10"	6	50	50	60	6	60	30	80"
32RLSS	7860	8320	11,090	3230	930	6930	10' 9"	33' 0"	6	50	30	60	6	60	30	80"
33FKSS	7115	7590	11,280	4165	1120	5995	10' 9"	33' 5"	6	50	50	30	6	60	30	80"
37BHSS	7950	8490	11,030	3080	870	7080	11' 1"	38' 3"	8	50	50	30	6	60	30	84"
38FLTS	9310	9850	11,660	2350	1500	7810	11' 1"	38' 10"	6	50	50	30	6	60	30	84"
38BHDS	9305	9845	11,190	1885	1030	8275	11' 1"	38' 10"	8	50	50	30	6	60	30	84"

* Ship weights do not include options.
 Model number does not necessarily reflect the overall length of a particular unit.

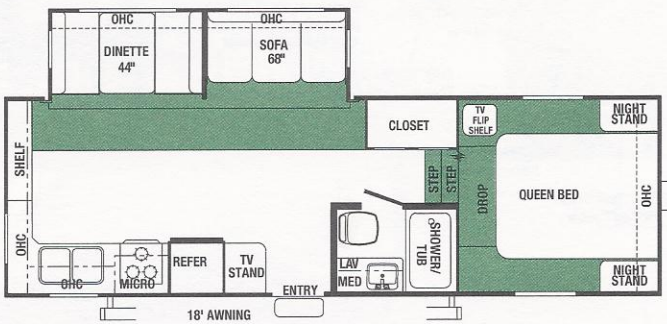
Fifth Wheel Floor Plans

Sandpiper™

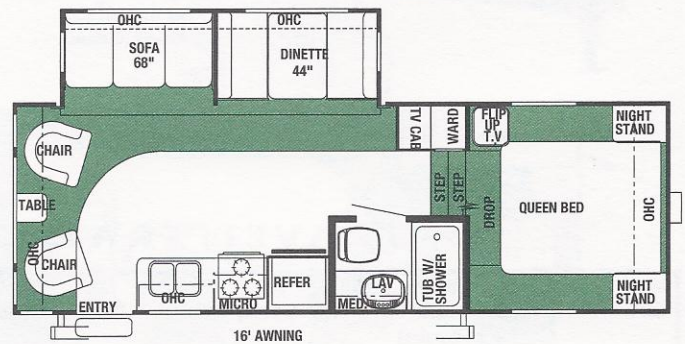
by Forest River

MID-PROFILE

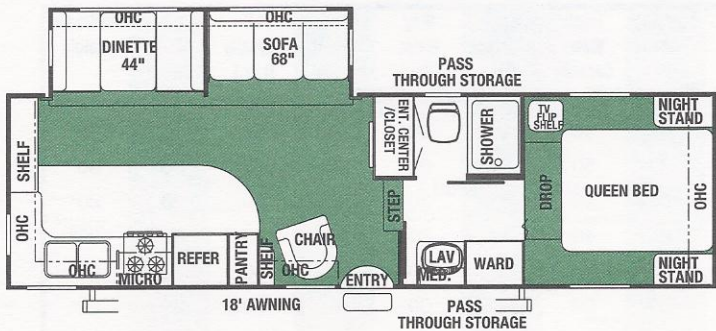
25RKSS MID Options 1, 2, A



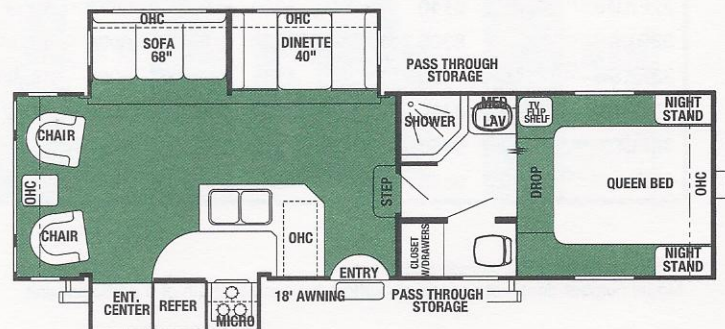
25RLSS MID Options 1, 2, A



27RKSS MID Options 1, 2, A

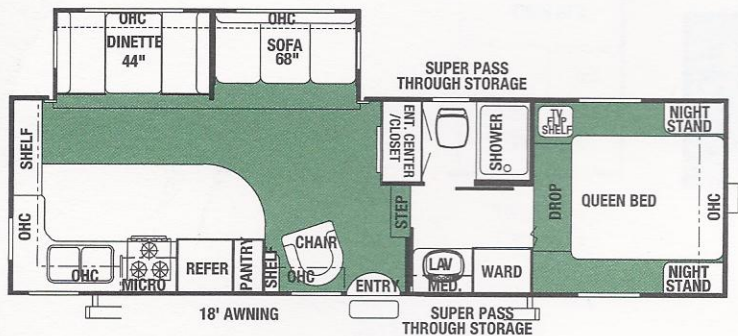


28RLDS MID Options 1, 2, A

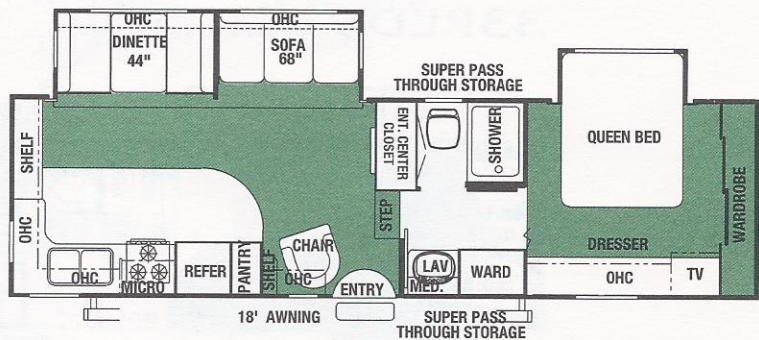


HI-PROFILE

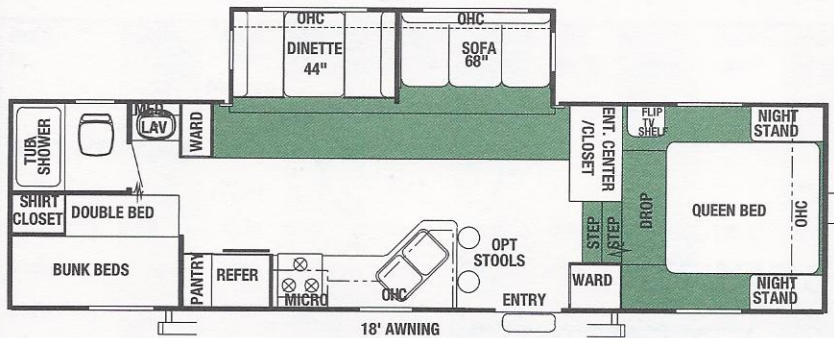
27RKSS Options 1, 2, A



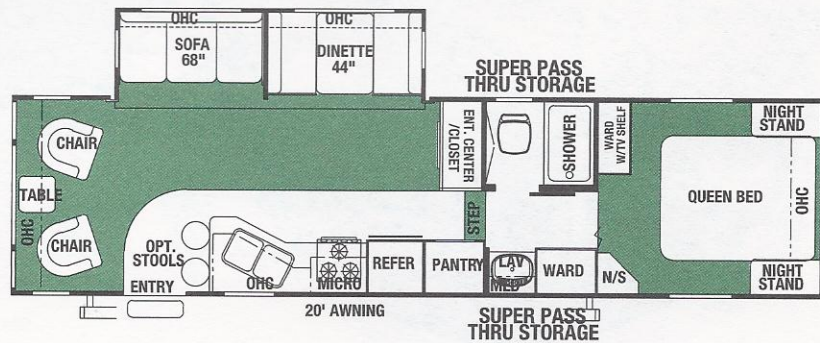
28RKBS



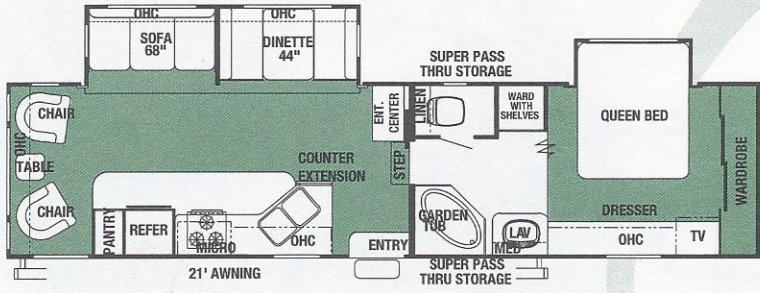
30BHSS Options 1, 2, A



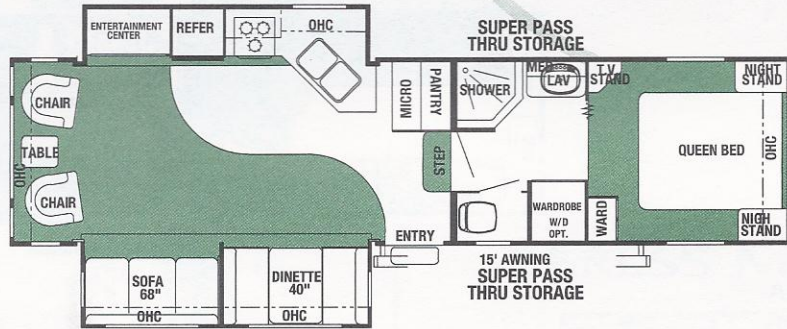
30RLSS Options 1, 2, A, B



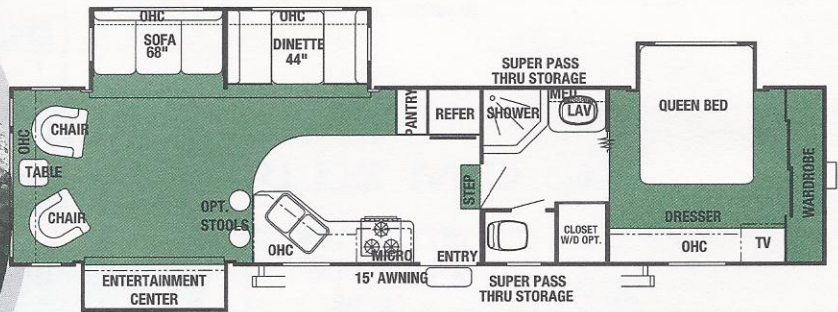
32RLBS



33RLDS Options 1, 2, A, B

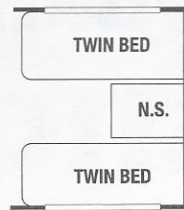


35RLTS

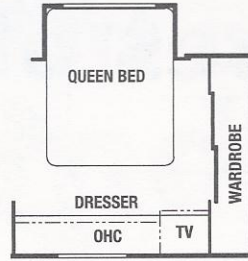


FIFTH WHEEL OPTIONS

Bedroom and wardrobe options for all fifth wheels.

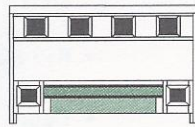


Twin Beds
Option A

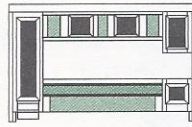


Slide Out
Option B

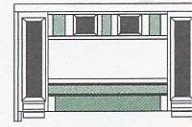
Mid-Profile



Standard

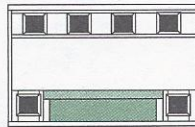


Option 1

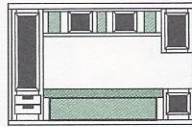


Option 2

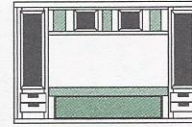
Hi-Profile



Standard



Option 1



Option 2

FIFTH WHEEL SPECIFICATIONS

Model No.	Ship* Weight	Weight With Fiberglass	GVWR	Cargo Capacity	Hitch Weight	Axle Weight	Exterior Height	Exterior Length	Sleeping Capacity	Fresh Water (Cap.)	Waste Water (Gal.)	Grey Water (Gal.)	Water Heater Cap. (Gal.)	LP Capacity (Lbs.)	Furnace BTU (x1000)	Bedroom Height (FW)
Mid-Profile																
25RKSS†	7270	7270	8560	1290	1560	5710	11' 7"	27' 9"	6	40	30	60	6	60	30	71"
25RLSS†	7040	7040	8380	1340	1380	5660	11' 7"	26' 1"	6	40	30	30	6	60	30	71"
27RKSS†	7672	7672	11,586	3914	1426	6149	11' 7"	29' 0"	6	50	30	60	6	60	30	71"
28RLDS†	9407	9407	11,730	2323	1570	7440	11' 7"	30' 1"	6	50	30	60	6	60	30	71"
Hi-Profile																
27RKSS	7275	7672	11,400	4125	1240	6035	12' 2"	29' 0"	6	50	30	60	6	60	30	77"
28RKBS	8500	8917	12,110	3610	1950	6550	12' 2"	29' 9"	6	50	30	60	6	60	30	69"
30BHSS	8100	8517	11,490	3390	1330	6770	12' 2"	31' 3"	8	40	30	30	6	60	30	77"
30RLSS	8276	8714	12,125	3849	1965	6311	12' 2"	32' 8"	6	60	50	50	6	60	30	69"
32RLBS	9065	9539	12,295	3230	2135	6930	12' 2"	33' 10"	6	60	50	50	6	60	30	69"
33RLDS	10,310	10,762	14,180	3870	2180	8130	12' 2"	33' 4"	6	50	50	60	6	60	30	69"
35RLTS	10,098	10,562	13,859	3761	1859	8239	12' 2"	35' 6"	6	50	50	80	6	60	30	69"

* Ship weights do not include options.

† Models standard w/fiberglass exteriors and front fiberglass cap.

Model number does not necessarily reflect the overall length of a particular unit.

Features of Quality Living Sandpiper™ by Forest River

COMFORT

- Four color coordinated interiors
- Color coordinated bedspreads & bunkspreads
- 44" dinette seats (Slide-outs only)
- Bedroom roof vent
- In floor ducted heat
- 30 oz. carpet w/padding
- 30" radius primary entrance door, 26" secondary
- Mattress upgrade
- Jalousie windows
- Fantastic vent bath
- Color coordinated drapes & valances
- 84" interior height (37BHSS, 38BHDS, 38FLTS and all fifth wheels)
- 80" interior height (trailers only)
- Free standing swivel rocker (per floor plan)
- Dometic® 13,500 BTU central air conditioner w/quick cool feature
- Sofa pillows
- Vented side windows in slide-outs
- Toe kicks kitchen base cabinets

CONVENIENCE

- 6 gal. gas/electric DSI water heater
- Built in medicine cabinet & mirror in bath
- Mini-blinds throughout
- Systems monitor panel
- 12 volt decor light in slide-room
- Large Dometic® double door refrigerator
- TV antenna w/booster
- Surround sound TV hook-up
- Bi-fold shower door
- Lift-up beds w/gas struts (per floor plan)
- 60/40 split acrylic sink
- Single lever faucet
- Two plastic sink covers
- 30lb. double LP tanks w/auto changeover
- LP tank cover (on trailers)
- Rear bumper w/sewer hose carrier
- Chrome bumper cover
- Hitch light
- Porch light w/interior switch
- Step light - Main entrance
- TV shelf and outlet in bedroom
- Oak spice and knife rack
- Positive cabinet door catches
- Oak edged fully laminated countertops
- Towel ring and brass finished toilet paper holder
- Interior access door under dinette
- Pots and pans drawer under dinette
- Oak magazine rack
- Wainscoting

- Solid oak drawer fronts w/pine sides
- Magic Chef® three burner high output range w/22" oven
- Mortise & tenon solid oak raised panel cabinet doors
- Neo angle shower w/glass door (28RLDS, 33RLDS, 35RLTS and 27FBSS)
- Power range hood w/light
- Extra-large picture window in slide-room dinette
- Triple step w/9" riser (slides only)
- Microwave w/carousel
- Satellite Prep
- Cable hook-up
- Laundry chute (per 5th wheel floor plan)

CONSTRUCTION

- A&E 8500 side awning
- 5/8" plywood tongue & groove floor decking
- 5" truss roof rafters
- 3/8" roof decking (entire roof)
- 2" x 3" floor joists 12" on center
- R-7 insulation throughout (floors, walls & ceilings)
- Radial tires
- Flush clamp ring windows w/Radius corners
- Plywood constructed dinette & bed bases (2" x 2")
- 2" x 2" wall studs 16" on center
- Automotive style fender skirts
- Dewald hydraulic slide system w/manual override
FLUSH FLOOR
- Enclosed gooseneck (5th wheels only)
- Finished interior bed bases
- Rolled side metal on all slide-out models
- Powder coated frame

SECURITY & SAFETY

- Flush door latch w/integral dead bolt lock
- Smoke detector
- Fire extinguisher
- LP leak detector
- Screen door w/safety latch
- Electric brakes
- GFI receptacle kitchen & bath
- Safety chains (trailers)

MAINTENANCE

- ABS tub w/one piece surround (per floor plan)
- Baked-on enamel graphics exterior (std. units)
- TPO vinyl roof (12 yr. warranty)
- One-piece rock guard awning (on models w/front windows)
- Awning drip rail w/downspout
- Fiberglass entry and baggage doors
- Water heater by-pass

FOREST RIVER ADVANTAGE

- CD/cassette stereo system with remote control
- Water filter system (entire unit)
- Overhead cabinets in slide-out
- Fantastic fan in bath
- 6+2 Forest River sound system w/100 watt subwoofer for true surround sound
- Decor light dinette (slide-outs only)
- Upgraded Mattress
- Lighted entry step (main entrance)

POPULAR OPTIONS

- Skylight over tub
- Bedroom wardrobe option(s)
- Sofa hide-a-bed (slide-outs only)
- Stabilizer jacks
- Spare tire, carrier and cover
- Patio door w/vertical blinds (per floor plan)
- Power front jacks
- Outside shower
- Solid oak facing around slide-out(s)
- Bedroom slide-outs (per floor plan 5th wheels only)
- Interior light package upgrade
- Range cover
- Extra large double door refrigerator
- Raised refrigerator door oak insert
- Large exterior storage sofa
- Small exterior storage dinette
- Glass garden tub/shower door
- Bar stools
- Second drawer under dinette
- Phone jack
- Roof rack & ladder
- Twin beds
- Ceiling paddle fan (FW's only)
- Free standing dinette with 4 chairs
- Glider recliner IPO swivel rocker
- 15K A/C IPO 13.5K
- Water heater 10 gal. gas/electric DSI
- Day/Night shades
- Front and rear caps (fifth wheels only)
- Heated holding tanks
- Fiberglass exterior

Every Comfort of Home Sandpiper™

by Forest River



With Sandpiper™, storage is not limited to just the interior.



Vented side windows in the slide-out let you enjoy the cool breezes providing important cross ventilation that most of our competitors do not offer.



For maximum air circulation and to increase your heating and cooling efficiencies, you may want to choose this optional ceiling paddle fan. (Available on all Fifth Wheels)



Wonder where to put your dirty clothes? On selected fifth wheel models we have provided a laundry chute and basket.



Safety, comfort and convenience is what we are all about – every Sandpiper™ is equipped with a lighted main entry step. You will come to appreciate this feature while enjoying those late night campfires.



Fantastic fan - Our 12" 10-blade Fantastic™ Bath Fan significantly increases air circulation and the removal of condensation as compared to the industry's standard power bath vent.



Our whole house water filtration system removes the bad taste and odor as well as bacteria and other contaminants for 10,000 gallons or one year. The WaterPur™ Filtration System has been awarded the WQA Gold Seal for meeting and exceeding the industry standards for performance, capacity and integrity. This will ensure that you will have a safe and healthy camping experience. For more information go to www.wqa.org.



Enjoy movies, sports and music with Forest River's exclusive sound system. The heart of our impressive system is an AM/FM CD cassette stereo all operated by remote control.

Our speaker system boasts an impressive 100 watt sub woofer with four satellite cube speakers to enhance your listening pleasure. Easy no-fuss hook-up to your system completes your camping experience.



Model 33FKSS shown in Sage decor.

Now is the time to make lifelong memories

with the comforts of Sandpiper™



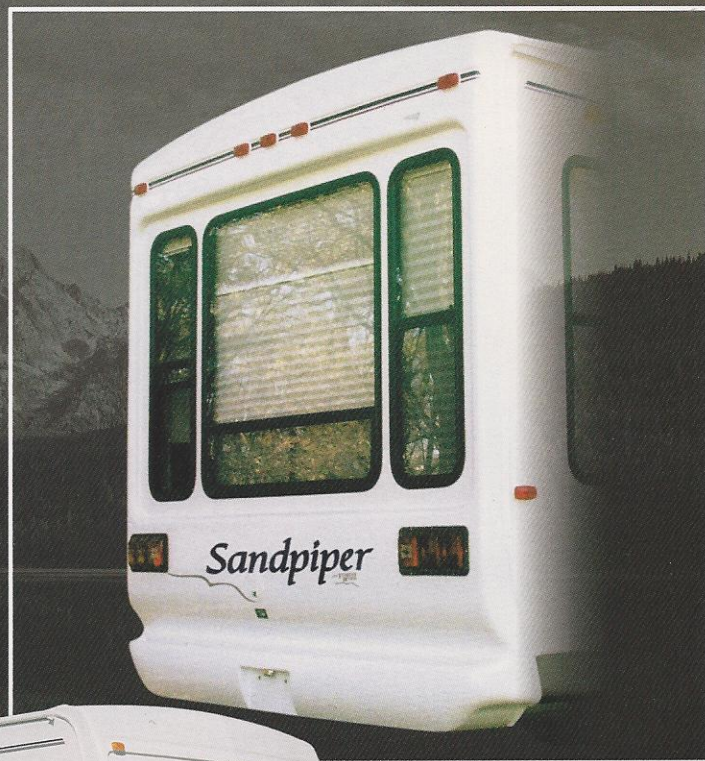


This open, airy interior is enhanced by the full-sized panoramic bay window seating area at the rear of the unit. Notice the solid oak counter top edging and abundant storage that has helped make Sandpiper™ one of America's leading choices for seasoned campers. So go ahead, hitch it up and live out your adventures in a Sandpiper™. After all, you deserve it!

Model 35RLTS shown with Tan decor.



A partnership of recreation and nature – Forest River.



Long recognized by consumers and our competition alike for quality, innovative floor plans, and price sensitivity, the Sandpiper™ by Forest River makes its move to satisfy today's educated buyer. Sandpiper™ not only has obvious luxury amenities, but also retains the hidden values that go into every Forest River model and makes the difference when it comes to making the right choice.

The Two Forests of Forest River... Forming Relationships with Nature

Forest River, Inc. is helping to preserve America's wilderness areas for the use and enjoyment of our customers and future generations. With every Forest River recreational vehicle purchased, a tree will be planted in the buyer's name in one of America's national forests.



3010 College Ave. • P. O. Box 124 • Goshen, IN 46527
Phone: 574-533-5934 • Fax: 574-533-6085
www.forestriverinc.com

JERRY'S TRAILERS & CAMPERS
2601 S. 13th St.
Norfolk, NE 68701
(402) 371-1306

All illustrations and specifications contained in this literature are based on the latest product information at time of publication. Forest River reserves the right to make changes in prices, colors, materials, equipment and specifications at anytime without notice and assumes no responsibility for any error in this literature. All units are shipped F.O.B. Goshen, Indiana. CONSULT YOUR LOCAL DEALER FOR WARRANTY INFORMATION.

