

Hawkeye Fifth Wheels by R-Vision



*Fully Aluminum
Framed with
Standard
Bedroom Slide*

AFFORDABLE

Gathering with family or entertaining friends is a pleasure in the spacious Hawkeye 5th wheel. Optional Raised-panel oak cabinetry in warm, golden tones highlights the Hawkeye's interior layout. The large flush-floor slide-out room features a roomy dinette and sofa that can each easily convert into extra beds, as well as a full compliment of overhead cabinet storage. The oversized rear bay window allows for a great view of the surroundings, while optional dual captains chairs provide a comfortable place to relax in the evening.



Spacious 5531RLBS Interior

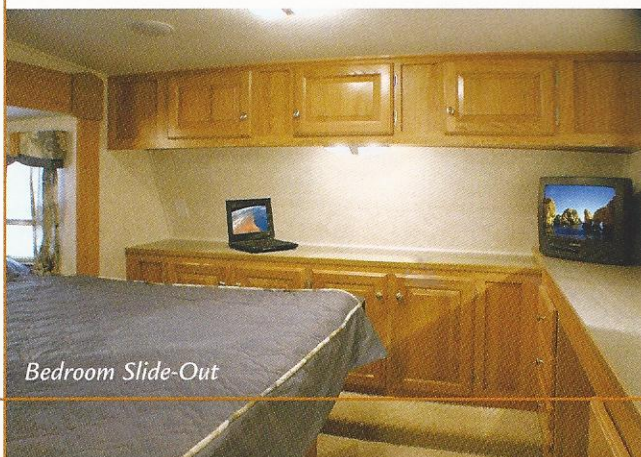
WARM, INVITING INTERIORS

You'll appreciate Hawkeye's large, open kitchen layout featuring brushed metal appliances and all the conveniences of home including a large refrigerator/freezer, microwave oven, gas range/oven, deep double bowl sink and more. There's loads of overhead and base cabinet storage, including a spacious pantry for all your meal preparation needs. A conveniently located entertainment center offers room for a 25" color television allowing occupants to view programs easily from any location in the living area.

Beyond the kitchen, a large double-door mirrored wardrobe with six drawers maximizes storage space in the hallway.



5531RLBS Interior

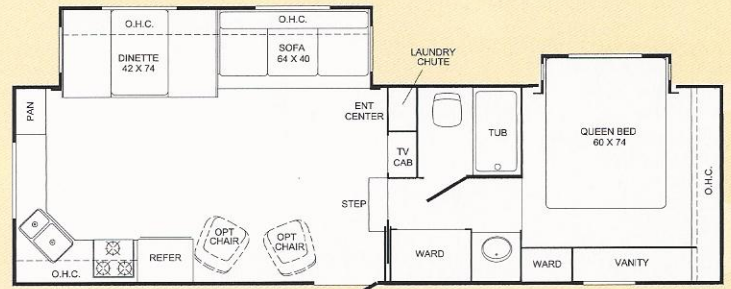


Bedroom Slide-Out

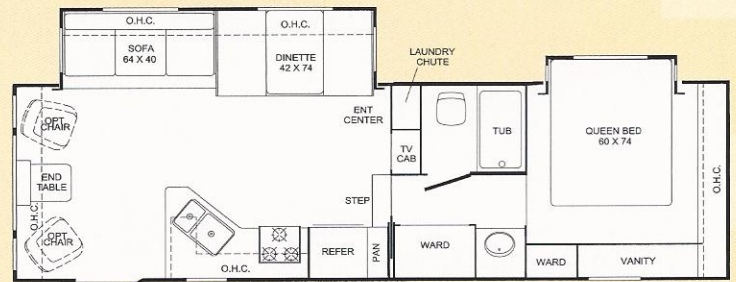
The Hawkeye features the first full aluminum framed mid profile 5th wheel with a bedroom slide-out as standard. Increased living space allows for the luxury of a walk-around queen-size bed, extra wardrobe, and a generous vanity area.



The exterior of the Hawkeye features front and rear caps, and is constructed using fully welded aluminum/laminated sidewalls, aluminum roof trusses and aluminum floor joists – making it one of the lightest, yet strongest 5th wheels on the market. Hawkeye's laminated sidewalls feature R-7 block foam insulation, aluminum framing and fiberglass skin, to provide a well-insulated, easy to maintain coach for years of carefree enjoyment.



5531RKBS



5531RLBS



5531DKBS



5533BHBS



SPECIFICATIONS



Appliances/Equipment

- Dometic Refrigerator, Flush Mount
- 3 Burner Range Top, High Output
- Microwave Ready
- Power Range Hood w/Light
- RVQ Grill Ready
- Monitor Panel
- Six Gallon Gas/Elec Water Heater w/Autoreignite
- Furnace w/In Floor Ducted Heat
- Air Conditioner Ready
- Duct for A/C
- Water Heater Bypass Kit
- Demand Water Pump
- Double Bowl, Acrylic Kitchen Sink
- Copper Lp Gas Lines
- (2) 30# LP Tanks
- Heated & Enclosed Fresh Water Tank

Bath

- ABS Bath Tub
- ABS Surround
- Shower Curtain w/Tieback
- Marine Type Stool
- Medicine Cabinet w/Mirror
- Towel Rack On Door
- Power Roof Vent
- Laminated Plywood Counter Top

Electrical

- 120 Volt GFI Protected Circuit(s)
- 120 Volt Breaker Panel
- 30 Amp, 28' Power Cord
- 55 Amp, Whisper Quiet Converter w/Charger
- Pre-Wired For Air Conditioner
- Pre-Wired For Microwave
- 12 Volt Ceiling Lights
- Outside, 120 Volt Receptacle
- Battery Rack & Box

Exterior

- Rubber Roof w/12 Year Warranty
- Rain Gutter w/Corner Down Spouts
- Entrance Door w/Screen And Deadbolt Lock
- Radius Corner Storage Door(s)
- Triple Step at Entrance Door
- Sewer Hose Storage In Bumper
- Patio Light
- Hitch Light
- Vinyl Exterior Graphics
- Darco Underbelly
- Over 57 Cubic Feet Pass Thru Storage

Interior

- Professional Grade Vinyl Flooring
- Upholstered Window Bays In Living Area
- Coordinated Drapes, Bedroom Area
- Mini Blinds Throughout
- Innerspring Mattress w/Fixed Bed
- Queen Bed w/Reinforced Bed Base
- Bedspread (w/Fixed Bed)
- Laminated Counter And Table Tops - Plywood
- Wood Drawer Sides
- Radius Cabinet Stiles
- Hinged Dinette Seat Lids
- Reversible Dinette Cushions
- Mirrored Cabinet Doors In Bedroom
- Decorative Border
- Composite Floor Registers
- Silverware Tray
- Knife Holder Behind Range
- Spice Rack
- Oak Framed Cabinet Doors
- Cable Ready TV Hook Up w/Booster
- Bedroom TV Hook-Up
- Light/Air Roof Vents
- Bar Stools (Where Applicable)
- RCA Jacks for TV Hook-Up to Stereo (w/Stereo Option)

Construction

- 3/8" Wood Decking, Roof, Full Length of Coach
- 5" Aluminum Truss Roof Rafters
- 5/8" Tongue & Groove Plywood Flooring
- 2" X 3" Aluminum Floor Joists
- I-Beam Steel Frame
- Large, Welded Frame Outriggers
- Fully Welded Aluminum Framing
- Aluminum Framed, Laminated Walls With Polystyrene Block Room Insulation (R-7)
- Laminated Fiberglass Exterior Skin
- Butyl-Tape Exterior Sealants
- Galvanized Steel Wheel Wells
- Framed, Braced And Wired for A/C
- Under Floor Heat Ducts
- Air Conditioning Duct
- One-Piece, 1" Plywood Slide-Out Floor

Running Gear

- Radial Trailer Tires
- White Spiked Wheels - w/Hub Caps
- Electric Brakes, All Wheels
- Tandem Axles w/Equalizer
- EZ Lube Hubs

Safety

- Emergency Egress Window (Where Required)
- Fire Extinguisher
- Smoke Detector
- LP Detector
- Break Away Switch
- Clearance Lights

Options

	Approx. Wt. (lbs.)
Free Standing Dinette w/Chairs	*
Heated Water Tanks	2
RVQ Grill	15
Scare Lights	2
Air Conditioner	104
TV Antenna w/Cable	5
Awning	40-60
AM/FM/CD Stereo	5
Microwave	30
Oven w/3 Burner Range	30
Outside Shower	2
Stove Cover	1
Sink Cover	1
Spare Tire/Carrier/ Cover	35
Rear Ladder	5
Safety Glass	*
B-Fold Shower Door	5
Raised Panel Solid Oak Cabinet Doors	5
Raised Panel Refer Front	3
Skylight Over Tub	5
Stab Jacks (2)	15
Hide-A-Bed (most models)	35
Power Jacks	7
Extra Storage Door (Sofa)	2
Extra Storage Door (Dinette)	2
Chair	35
Dinette Storage Drawer	5
DSI Water Heater	1
Safety Grab Handle	5
Rear ABS Trim Ring	5
Gravel Shield	3
Clock	1
3D Sound-SRS	2
Chrome Trim Ring	3
Day/Night Shades	5
Fan-Tastic Fan	15

	5531RKBS	5531RLBS	5531DKBS	5533BHBS
Length	31'4"	31'4"	31'4"	33'4"
Width (w/o Awning)	96"	96"	96"	96"
*Hitch Dry Wt. (Appr.)	1911	2046	1997	1950
*Axle Dry Wt. (Appr.)	5900	5904	6506	6360
Total Dry Wt.	7811	7950	8503	8310
Load Cap.	4260	4256	3654	3800
GVWR	12071	12206	12157	12110
Tire Size	225/75R15 C	225/75R15 D	225/75R15 D	225/75R15 D
Fresh Water Tank Cap.	40	40	40	40
Grey Water Cap.	80	80	80	80
Black Water Cap.	40	40	40	40

*Weights are approximate and based on standard features, optional equipment not included



R-Vision, Inc.

2666 S. Country Club Drive ■ Warsaw, IN 46580

www.trail-lite.com

As R-Vision constantly strives to improve our product, all specifications listed in this informative brochure are subject to change without notice or obligation. Photos may show optional equipment which is not included in the purchase price of the unit. Test drive and review a current model on your dealer's lot today. 25M CDS 12/02

Your Dealer

JERRY'S TRAILERS & CAMPER'S
 2601 S. 13th St.
 Norfolk, NE 68701
 (402) 371-1306

© 2003 R-Vision, Inc.