

# EVEREST

2003



Adventure Awaits You...

# EVEREST

## ALL-ALUMINUM CONSTRUCTED FIFTH WHEEL

Travel to any of your favorite destinations in total luxury and unsurpassed comfort. You will relax as you enjoy all the convenient amenities of home as well as the tasteful array of interior colors. Comfort awaits you in the spacious, residentially styled Everest.



This thoughtfully designed Everest entertainment center is angled for optimum viewing. The desk is computer friendly with an optional telephone/modem connection for your convenience. Enjoy listening to music from surround-style speakers while you absorb the cozy warmth from your optional fireplace (343L).



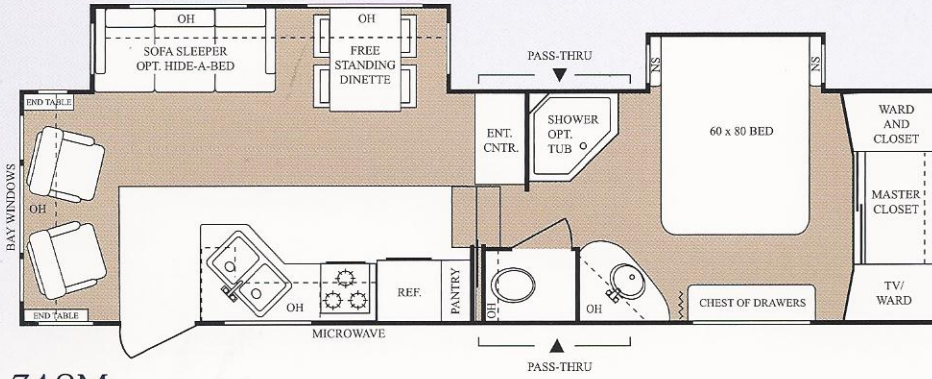


## No Details Have Been Missed

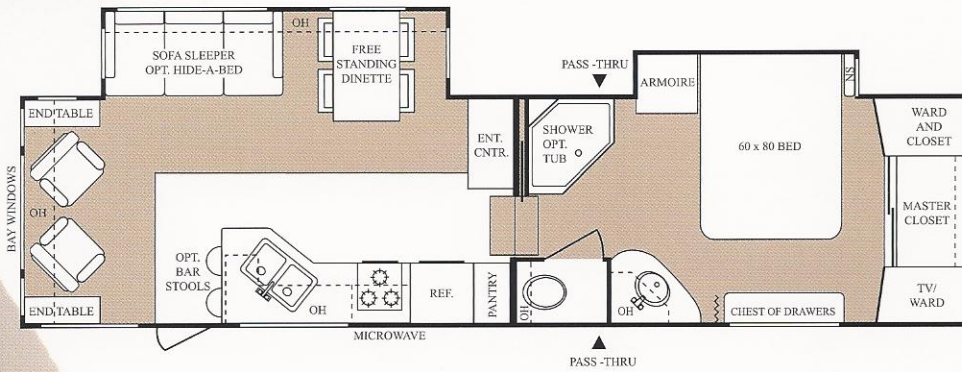
When you sit back in this lavish coach, you will notice the fine attention to detail, from the generous counter top space to the huge bay windows and sculpted carpet. Everest completes this living space with the highest quality, all wood cabinetry; it is actually screwed together, not stapled. Notice the mood-enhancing elegance added by the rich detail on the slide fascia. Restyled for 2003, the real oak fascia frames ample overhead storage and designer lighting in the 6'4" slideout, completing a full residential look.

Certain floorplans will not accommodate these features.

291L

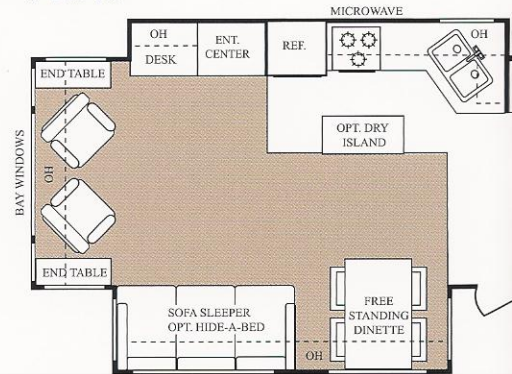


312M



# EVEREST

323K



## STRENGTH

- 2" Thick, 5-Layer, Laminated Aluminum Stud Sidewalls
- All Aluminum Trussed Roof Rafters
- 2" x 3" Residentially Constructed Aluminum Floor Joists, 12"/16" on Center • 5/8" Seamless Floor Decking
- 10" Steel I-Beam Powder Coated Frame

## STRUCTURE

- Fully Enclosed Underbelly with Heated and Double Insulated Holding Tanks
- One-Piece, Radius-Wrapped EPDM Rubber Roof
- Easy-To-Lube Axles • Shock Absorbers
- Hydraulic Slide System

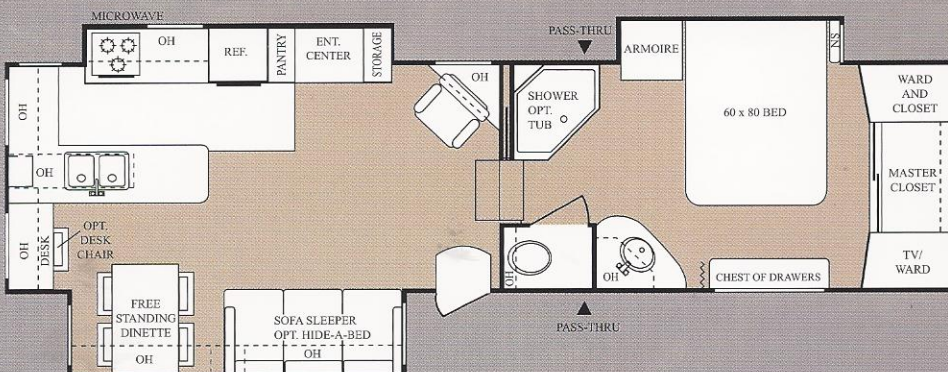
### EVEREST FIFTH WHEELS

Models	291L	293P	312M
GVWR	12700	12700	12500
UVW(Unloaded Vehicle Weight)	9560	9800	9525
CCC(Cargo Carrying Capacity)	3140	2900	2975
Hitch Weight	2300	2300	2120
Exterior Length	32'0"	32'10"	33'8"
Exterior Width	8'	8'	8'
Height with A/C	12'8"	12'8"	12'8"
Fresh Water (gal.)	64	64	64
Waste Water (gal.)	39	39	39
Grey Water (gal.)	77	77	77
Tire Size	ST235 80R16D	ST235 80R16D	ST235 80R16D

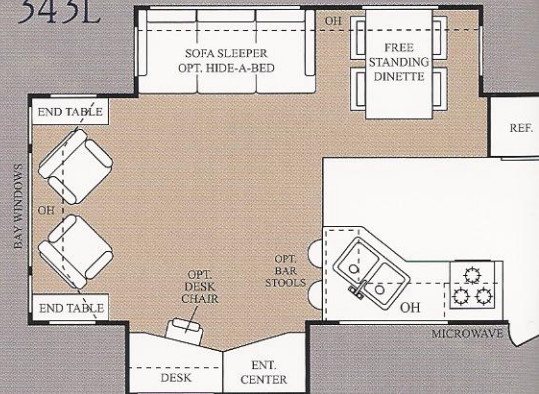
Extended hitch pin adds 9" to all models.

### Single Level Bedroom And Bathro

323P



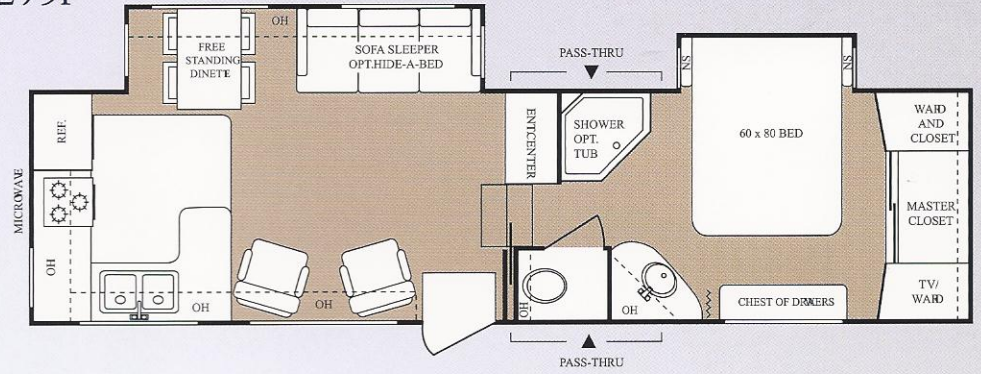
343L



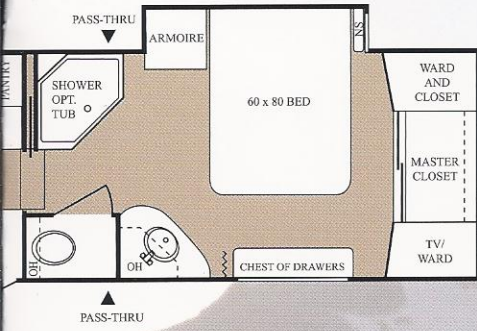
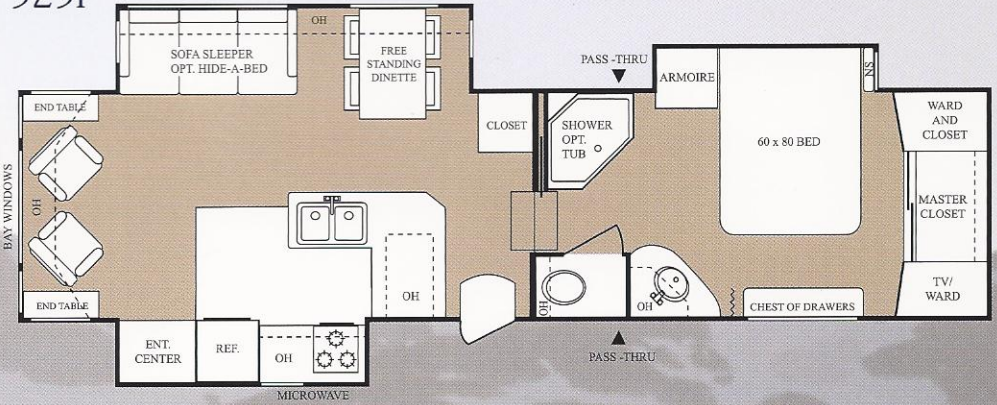
Features, floorplans, and specification



293P



323I



323K	323I	323P	343L	363K
14000	14200	13900	14000	14100
10690	10615	10880	11020	11220
3310	3585	3020	2980	2880
2040	2270	1960	2020	2100
34'11"	34'11"	34'11"	36'11"	37'1"
8'	8'	8'	8'	8'
12'8"	12'8"	12'8"	12'8"	12'8"
64	64	64	64	64
39	39	39	39	39
39	77	77	77	39
ST235	ST235	ST235	ST235	ST235
80R16D	80R16D	80R16D	80R16D	80R16D

## INSULATION FACTORS

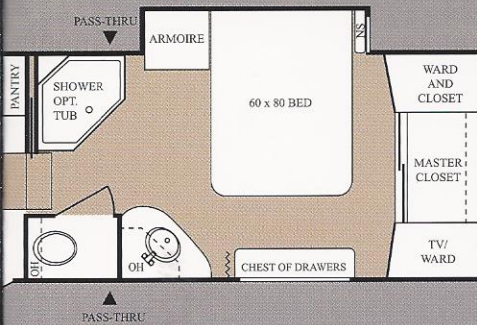
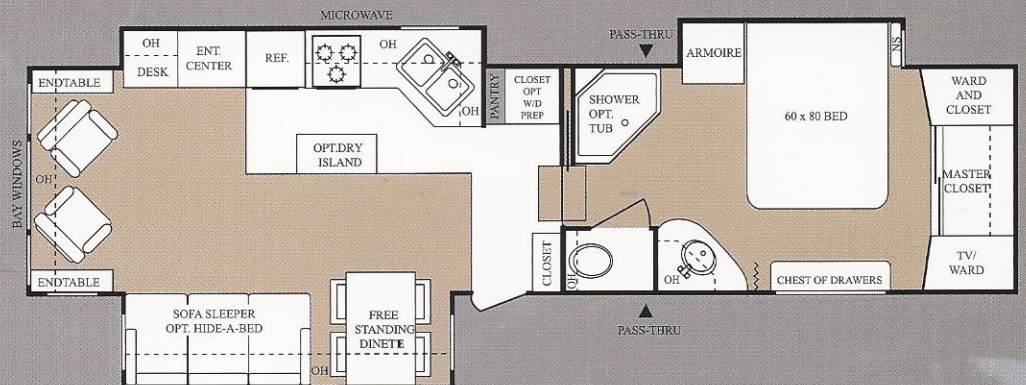
Everest's insulation makes it great for both hot and cold weather camping.

- WALLS - R-9
- ROOF - R-15\*
- FLOOR - R-29\*

\*Insulation values are calculated utilizing the Optional Double Insulation Package

From Suite Standard on Every Floorplan!

363K



are subject to change without notice.

## LIVINGROOM STANDARDS

- Designer Clock
- Sculpted Residential Carpet
- Flush Floor Slide-Outs with 6'4" Headroom
- Floor Ducted Heat
- Mini-Blinds
- Ceiling Paddle Fan with Light
- White Clamp-Ring Windows
- TV Antenna
- Bookshelf AM/FM Stereo with CD Player and Surround-Style Speakers
- Cable TV Hook-Up / Satellite Dish Ready
- Ratchet Style (Flip Sofa)
- Swing-Arm Light in Slide-Out

### LIVINGROOM OPTIONS

(N/A on all models)

- Electronics Package (TV/VCR)
- Fireplace (343L)
- Phone Jack\*
- Day/ Night Shades
- Coffee Table (323K, 323P, 343L, 363K)
- Desk Chair (343L & 312M)
- Hide-a-Bed Sofa
- Cloth Recliner/Glider\*
- Leather Recliner/Glider\*
- Fluorescent Lights (Lower Level Only)(3)
- Create-a-Breeze Roof Vent (Lower Level Only)

## KITCHEN STANDARDS

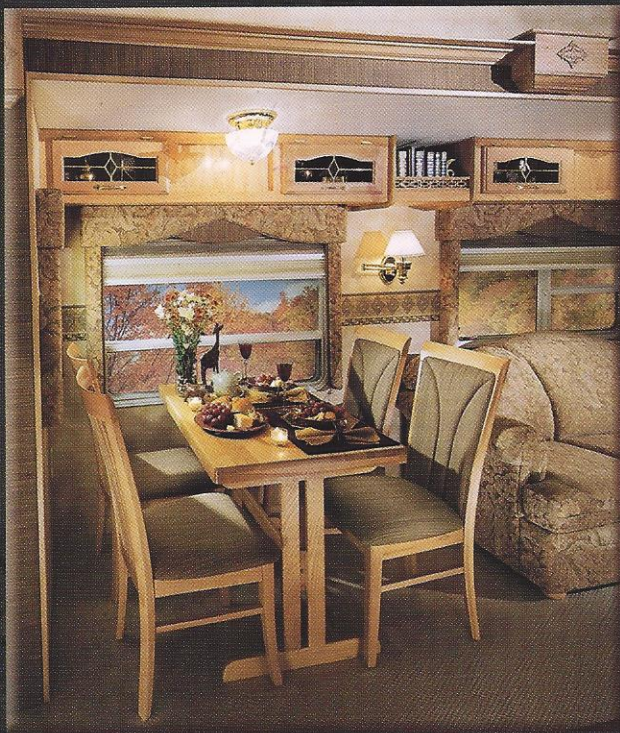
- Hardwood Raised-Panel Cabinet Doors
- Wood Floor in Kitchen
- Double-Door Refrigerator
- Solid Oak Wood Edge Countertop in Kitchen
- Space-Maker Microwave Oven
- 3-Burner Range with Oven
- Folding Range Cover
- Lighted Power Range hood
- Fluorescent Light in Kitchen
- Single-Lever Kitchen Faucet with Pull-Out Sprayer
- Double Bowl Kitchen Sink
- Free-Standing Dinette Table with Pull-Out Extension and 4 High-Back Chairs
- Spice Rack with Knife Holder

### KITCHEN OPTIONS

(N/A on all models)

- Booth Dinette (Most Models)
- Extra Sink Cover
- Pull-Out Pantry
- Large Double-Door Refrigerator
- Water Purifier
- Island Kitchen Base (models 323K & 363K only)
- Bar Stools (2) (models 343L & 312M)
- Solid Oak Refrigerator Door Front

\*Mandatory Options

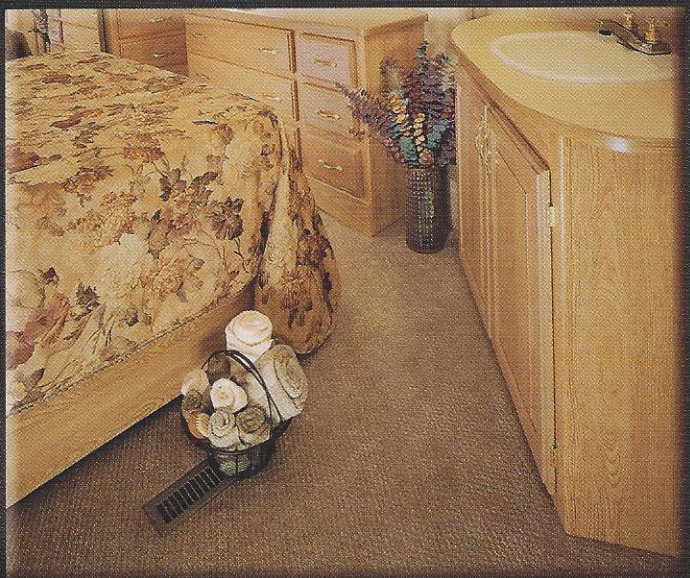


Everest's slide-out dinette allows you to enjoy a campsite view. You'll dine in the uncrowded comfort of residentially styled high-back, upholstered chairs, coupled with ample table space provided by the (Standard) pull-out extension.



(323K, 363K; Optional Island Kitchen)

Everest offers you ultimate convenience with many kitchen plans to choose from. All kitchens have a 22" oven, an easy-to-reach Space-Maker microwave, single-lever sink faucet with pull-out sprayer, built-in spice rack/knife holder, and wood-style flooring.



**UNIQUE FEATURE!**  
The Unified Master  
Bedroom and Bathroom Suite!  
(No Step)



Everest's impressive bathroom has an easy step-in garden shower, and a residential six-panel lavatory door as well as ample storage space. The perfect accommodations for an extended trip!

## BATH and BEDROOM STANDARDS

- Create-a-Breeze Roof Vent
- Garden Shower with Glass Shower Door
- Skylight in Bathroom
- Power Vent in Bath
- Foot Flush Toilet
- 6 Panel Bath Door
- Residential Queen Size Bed (60" x 80")
- Innerspring Mattress
- Bedspread and Shams
- Single Level Floor in Bathroom and Bedroom Master Suite (No Step)

### BATH and BEDROOM OPTIONS (N/A on all models)

- 13,500 BTU A/C in Bedroom (Non-Ducted)
- Wire and Brace for 2nd A/C in Bedroom (A/C not included)
- Pillow Top Innerspring Mattress (Residential Queen 60" x 80")
- Washer-Dryer Prep
- Porcelain Toilet
- Garden Tub I.P.O. Shower

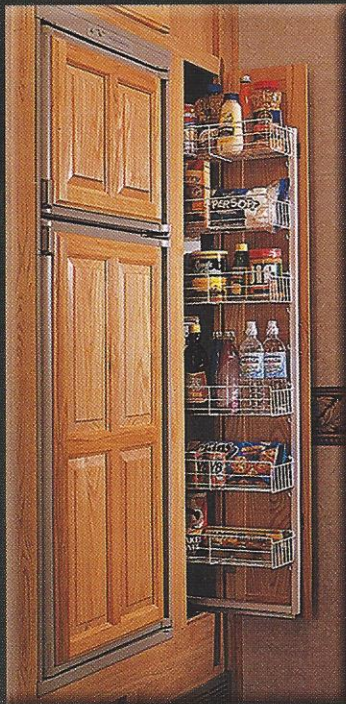


You'll love the comfort and beauty of Everest's spacious Master suite bedroom. Residential touches include the full 60" x 80" queen-size bed, the four-drawer dresser with shoe-box storage, neo-angled front closet with pull-out TV shelf, extra-large armoire, and much more.

Certain floorplans will not accommodate features shown.

# Full Aluminum Super Structure for Strength and Ease of Towing

Aluminum—Walls·Roof·Floor



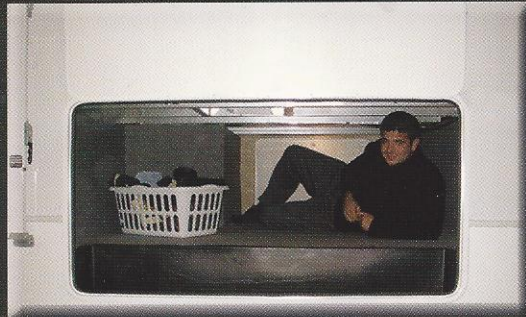
Another expertly planned Everest detail allows you plentiful storage in the optional easy-access slide-out pantry.



Every Everest fifth wheel features a front utility storage compartment complete with racks, bins and hanging hooks.



Everest's hidden laundry chute helps keep your bed and bath area neat and clean. You can quickly send dirty clothes and linens into the hamper basket waiting below.



"Stow-Away" Storage! While you might not choose to carry a passenger in Everest's 130-plus cubic feet of exterior storage, we think you'll find the space very convenient.

## MORE OPTIONS

(N/A on all models)

- Under-Carriage Spare Tire Kit
- Selector Valves For Slide-Outs
- Aluminum Wheels
- High-Gloss Fiberglass Side-Walls
- Generator Prep
- Heat Strips for Holding Tanks (Extra Protection- Heated Holding Tanks Std.)
- Security Lights
- 15,000 BTU A/C IPO 13,500
- 50-AMP Service with Detachable Cord
- Double Insulation- Roof and Floor
- Slide-Out Awnings
- Folding Assist Handle
- Tinted Safety Glass Windows
- Exterior Shower
- 10-Gallon Gas/Electric Water Heater with DSI\*

Everest is a product of:



17400 Hackberry Drive, Goshen, IN 46526  
(574) 535-2100  
www.keystone-everest.com



Go RVing  
Life's A Trip

# ALUMI-CORE

## SUPER STRUCTURE

WALLS FLOOR ROOF

## EXTERIOR STANDARDS

- Gel-coat, Fiberglass Front Cap, and Rear Cap
- Alumi-Core (Full Aluminum Super-Structure)
- Stunning Exterior Graphics and Luxurious Interior Decors
- Stow-Away Storage – Multi-Functional Exterior Storage System (130+ Cubic Feet)
- Patio Awning
- Rear Ladder
- Gutters with Rain Spouts
- Electric Front Jacks
- Shock Absorbers
- Stabilizer Jacks
- Easy-To-Lube Axles
- 16" Tires and Wheels
- Hydraulic Pump Override
- Monitor Panel
- LP Leak Detector
- Enclosed and Heated Underbelly with Double Insulated Tanks
- No-Fuss Flush System for Waste Tank
- Water Heater Bypass Kit
- Two 30 lb. LP bottles with Auto Switch-Over
- 13,500 BTU A/C-Ducted

\*Mandatory Options

Certain floorplans will not accommodate these features.

For More Information,  
Contact Your Everest Dealer.

Product information is as accurate as possible at the time of publication. Features, floorplans, and specifications are subject to change without notice. Some features listed and shown are optional.